

A collection of
alchemical and hermetic emblems
coloured by Adam McLean

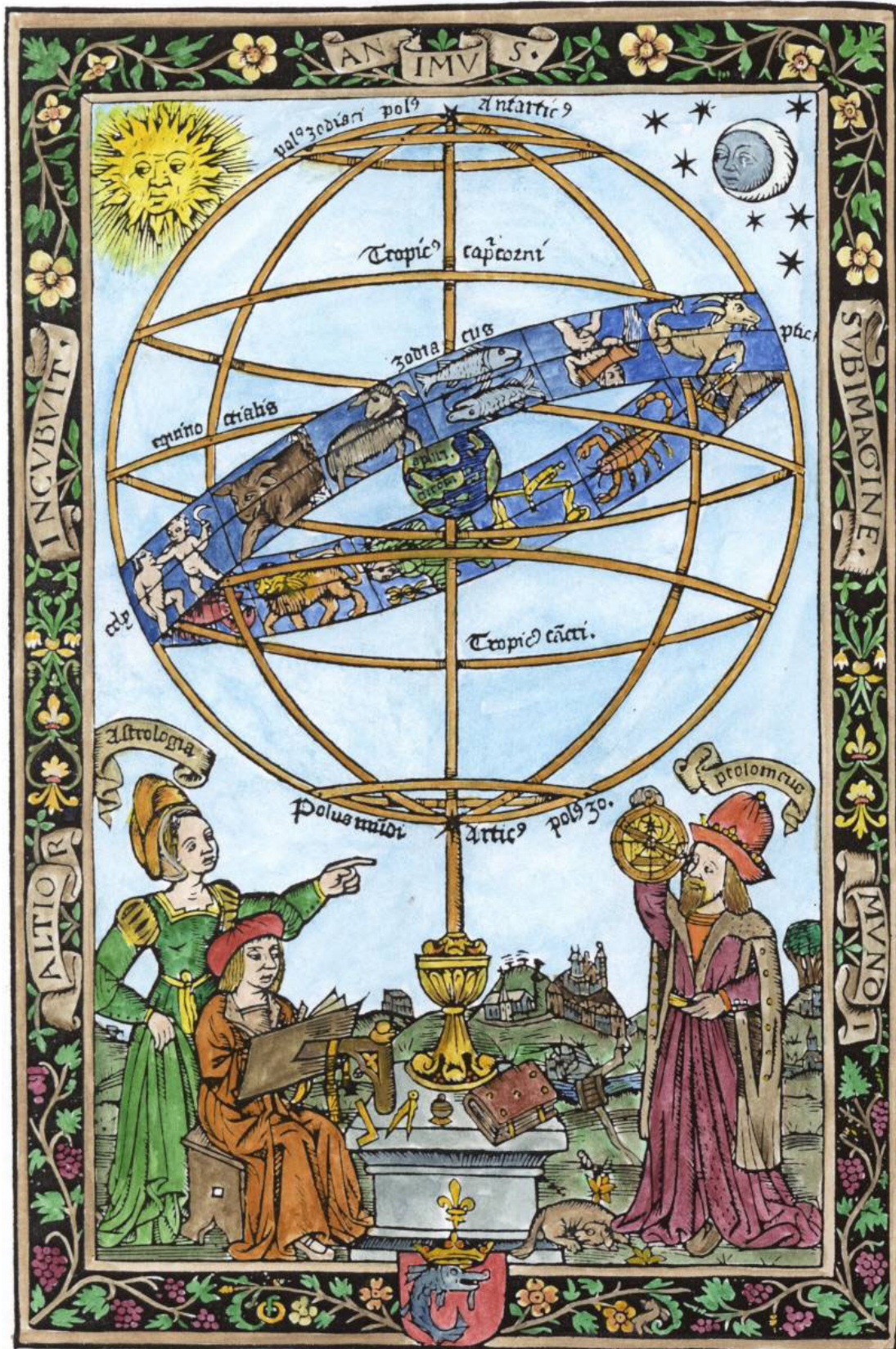
Gallery of astrological, astronomical
and general emblems related to alchemy

These images are copyright © Adam McLean 2004
The images on this CD-Rom are for use only for private study and must not be used in any publication, or distributed in electronic form on web sites or other media, without permission from the copyright holder Adam McLean <alchemy@dial.pipex.com>. This applies both to entire images or parts of images. This file has been set up so that both printing and the cutting and pasting of the images is disabled. The images are distributed in this form for study and contemplation on a computer screen. If you require high quality colour prints of some of these images then see the details of how to purchase at:

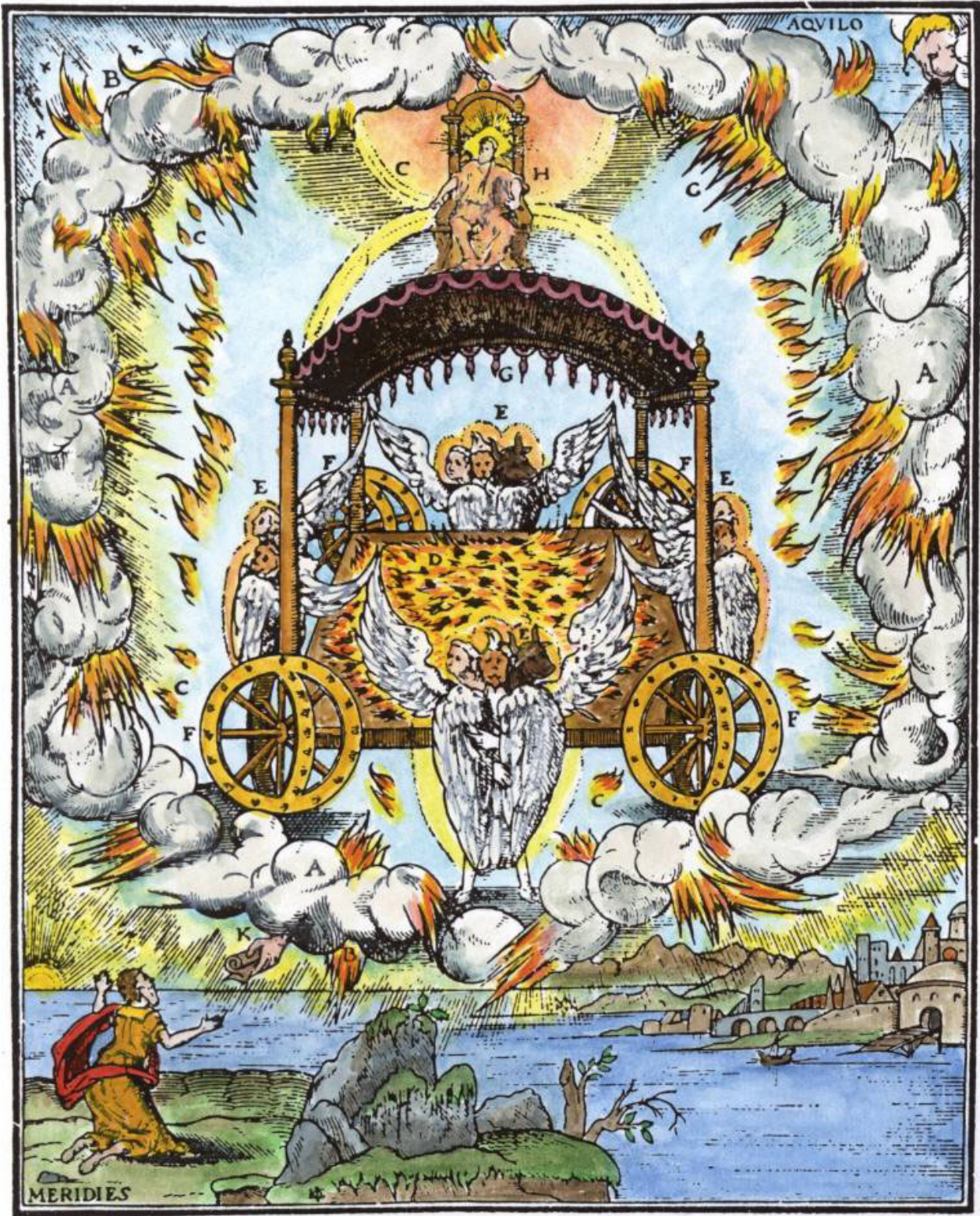
<http://www.alchemywebsite.com/bookshop>

Astronomical and astrological
material related to alchemical
and hermetic emblems

AST01. Woodcut of the celestial sphere by Erhard Schön, 1515.



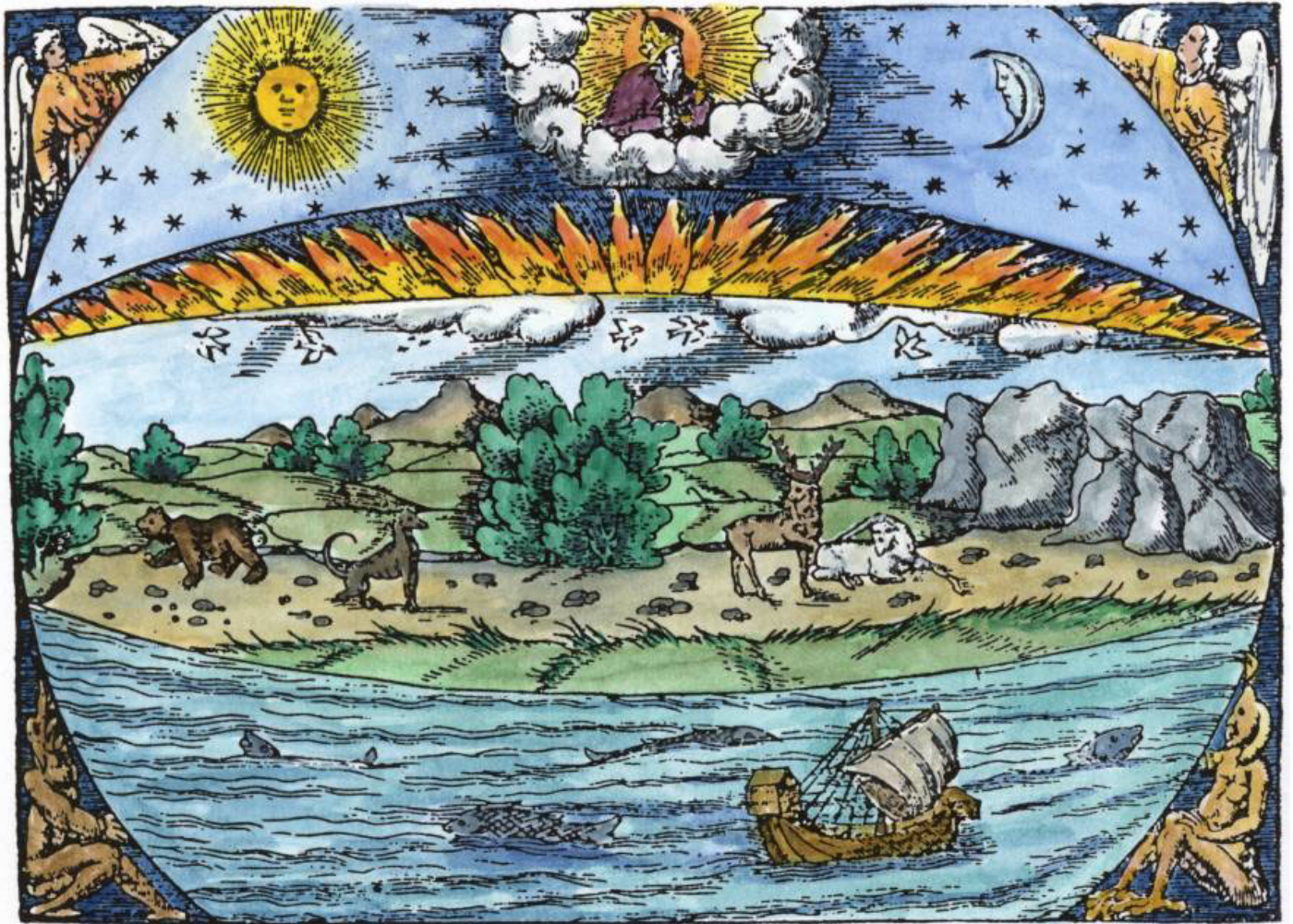
AST02. Woodcut of Ezekiel's vision from the Bear Bible, 16th Century.



AST03. Woodcut from William Cuninghame The cosmographical glasse, 1559



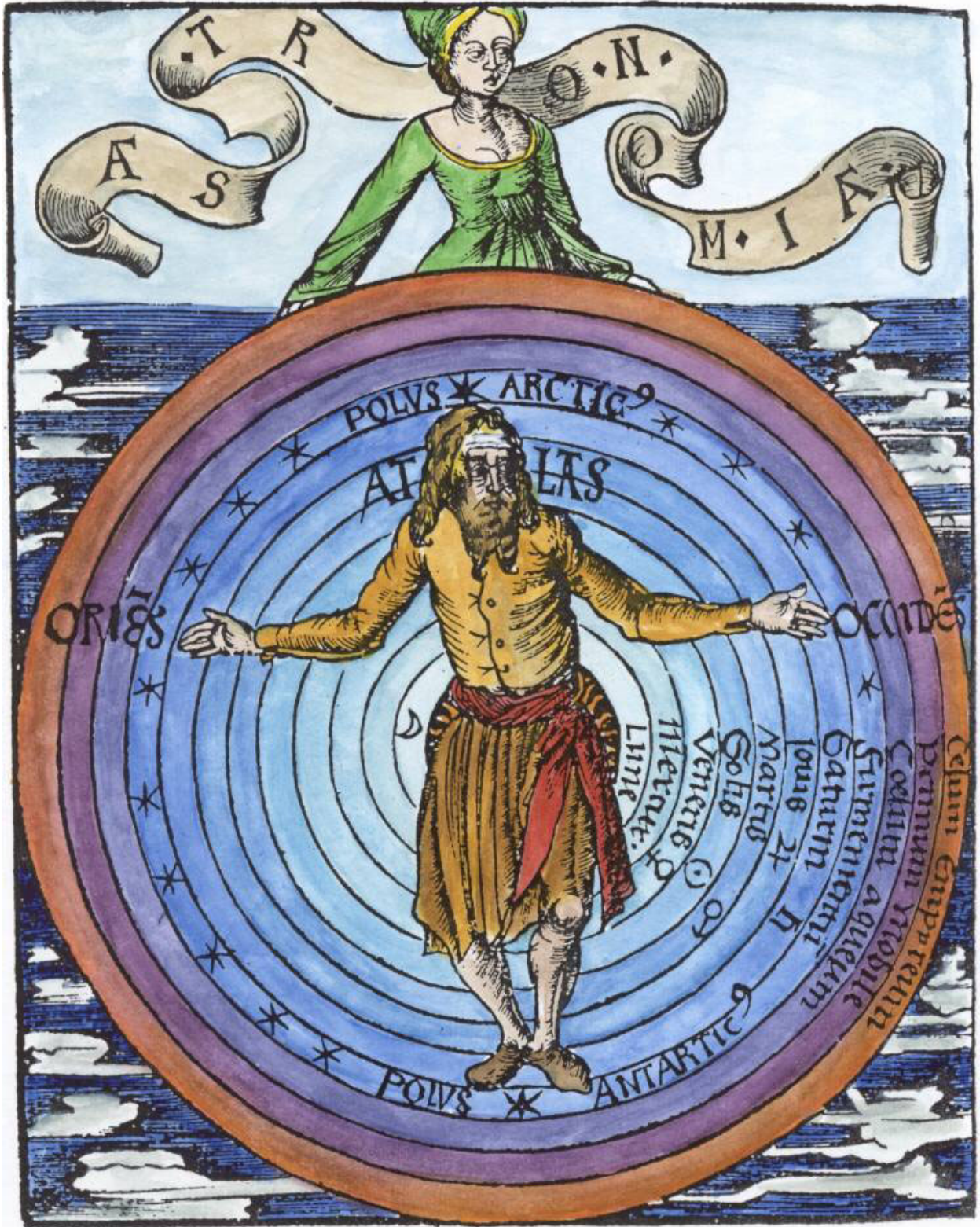
AST04. Woodcut from Sebastian Münster Cosmographia, 1544.



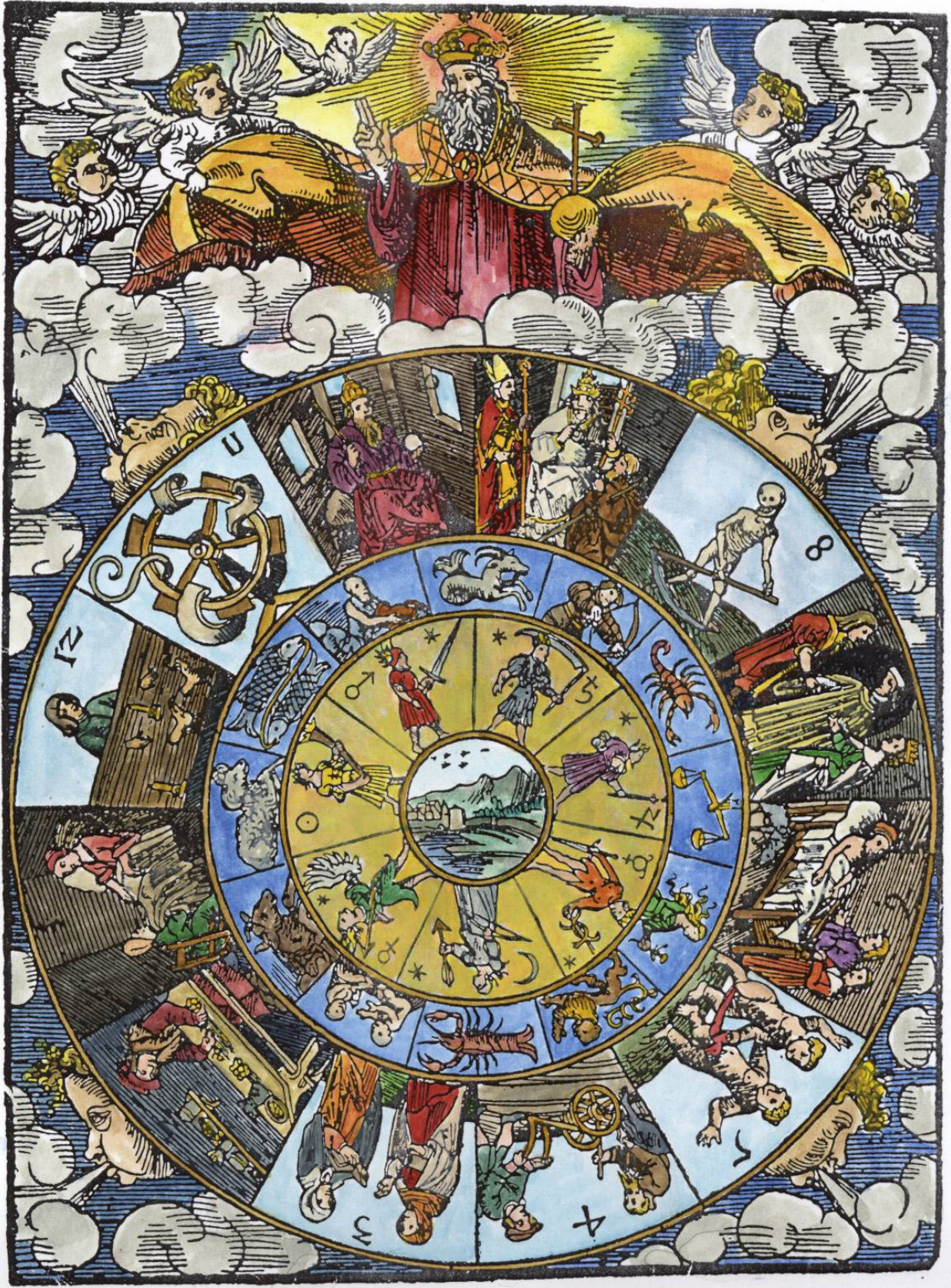
AST05. Title page from George Hartgill *Generall calendars*, 1594.



AST06. Woodcut from Gregor Reisch, *Margarita philosophia*, 1503.



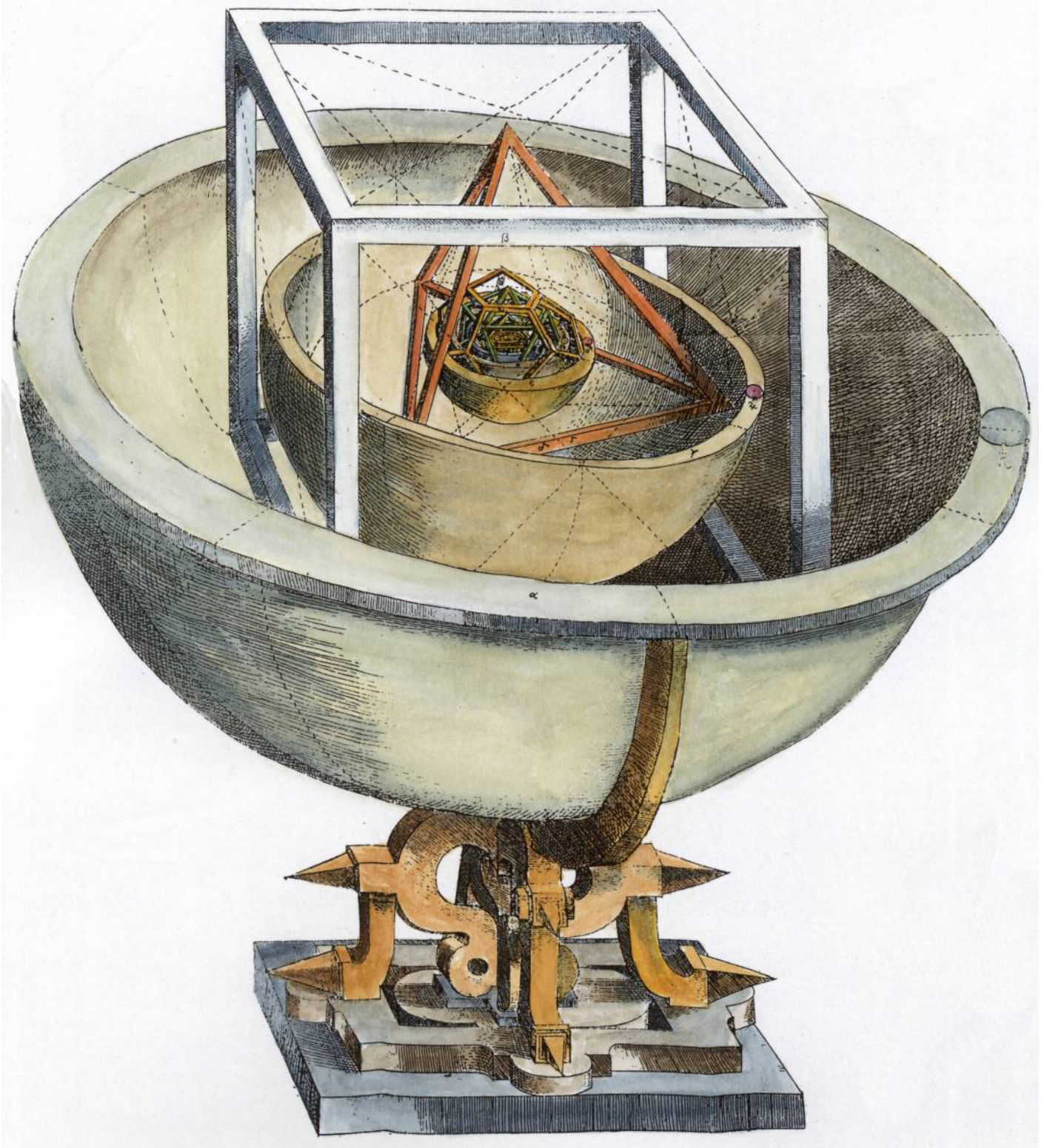
AST07. Woodcut from Nativity Calendar of Leonhard Reymann, 1515



AST08. Woodcut wheel of the planets



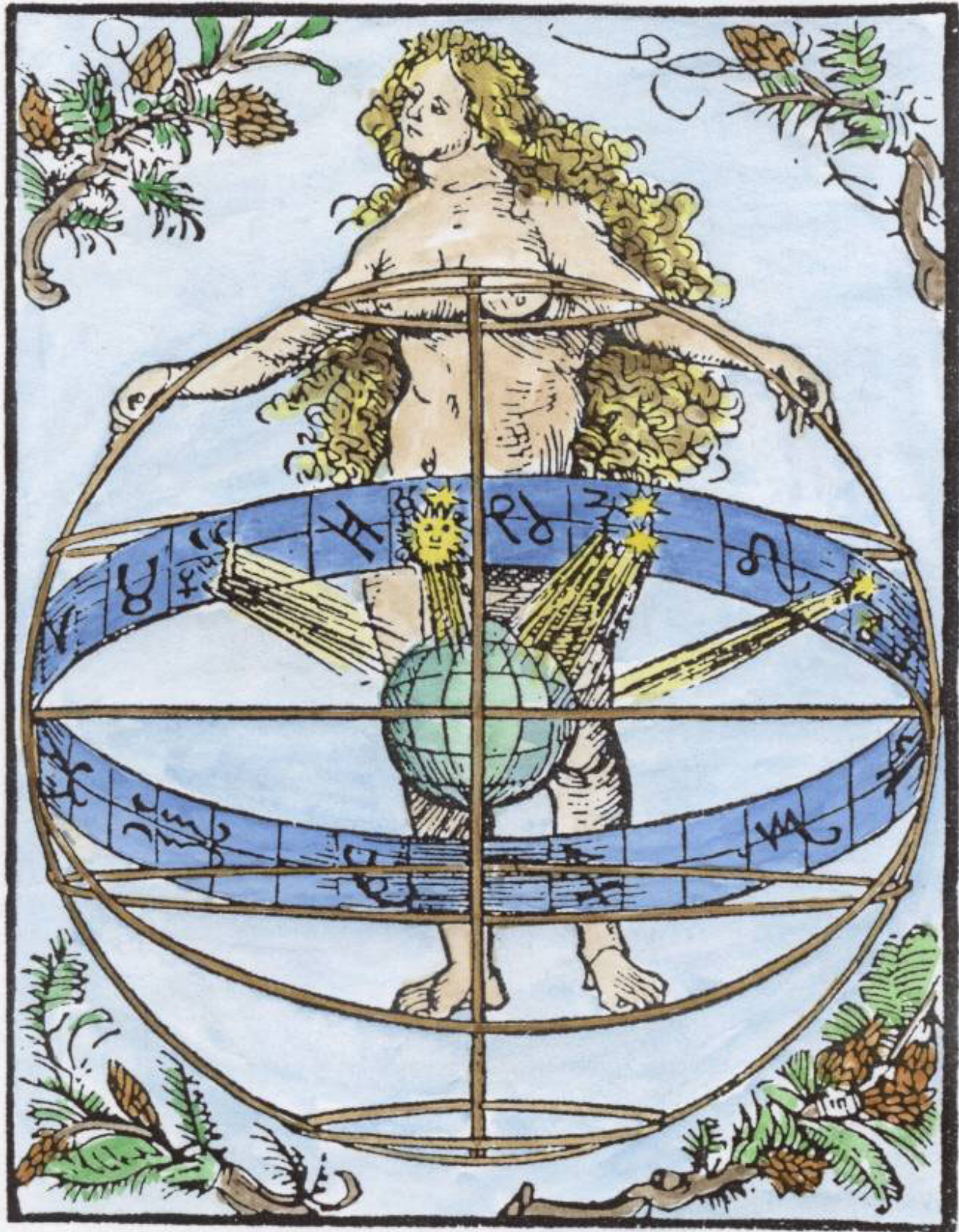
AST09. Engraving of Kepler's Platonic Universe from *Mysterium Cosmographicum*, Tübingen, 1596.



AST10. Woodcut on title page of *Messahalah de scientia motus orbis* Nuremberg, 1504.



AST11. Woodcut from *Urania che sostiene l'Universo* Nuremberg, 1503.



BE07. Woodcut of Saturn from Hans Sebald Beham's series on the seven planets 1530-40.



BE05. Woodcut of Mars from Hans Sebald Beham's series on the seven planets 1530-40.

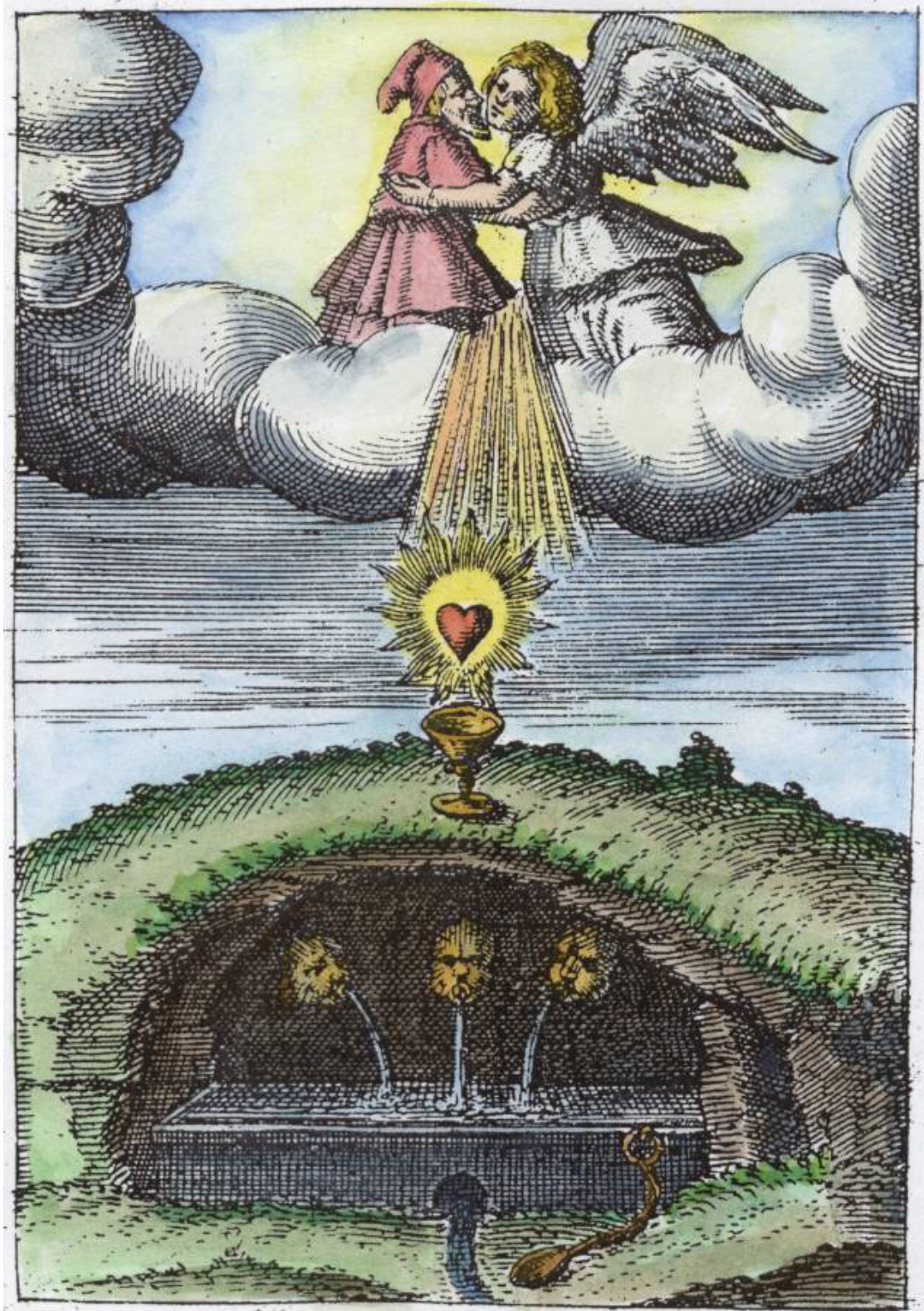


Religious, mystical and other material
with some relationship to alchemy.

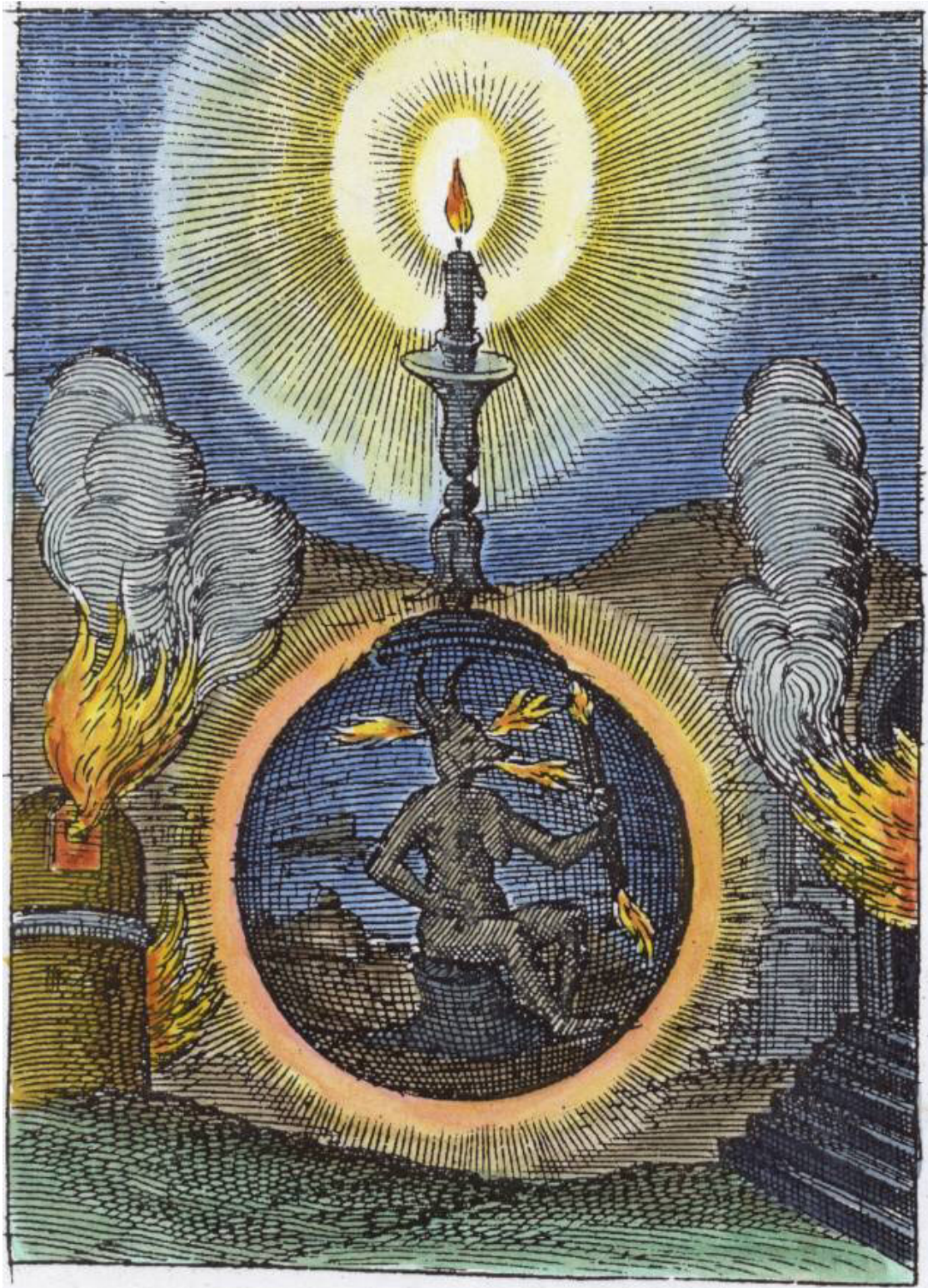
DA09. Woodcut 9 from Durer's Apocalypse series of fifteen, 1511.



EMB01. Emblem from Andreas Friedrich *Emblemes nouvelles*, Frankfurt, 1617.



EMB02. Emblem from Andreas Friedrich *Emblemes nouvelles*, Frankfurt, 1617.



EMB03. Emblem of Microcosm/Macrocosm from Jan Moerman *De cleyne-werelt* Amsterdam, 1608.



EMB04. Woodcut from Agricola *De re metallica* Basle, 1556.



EMB05. Woodcut in Vincenzo Cartari *Le imagini de gli dei Padua*, 1608

