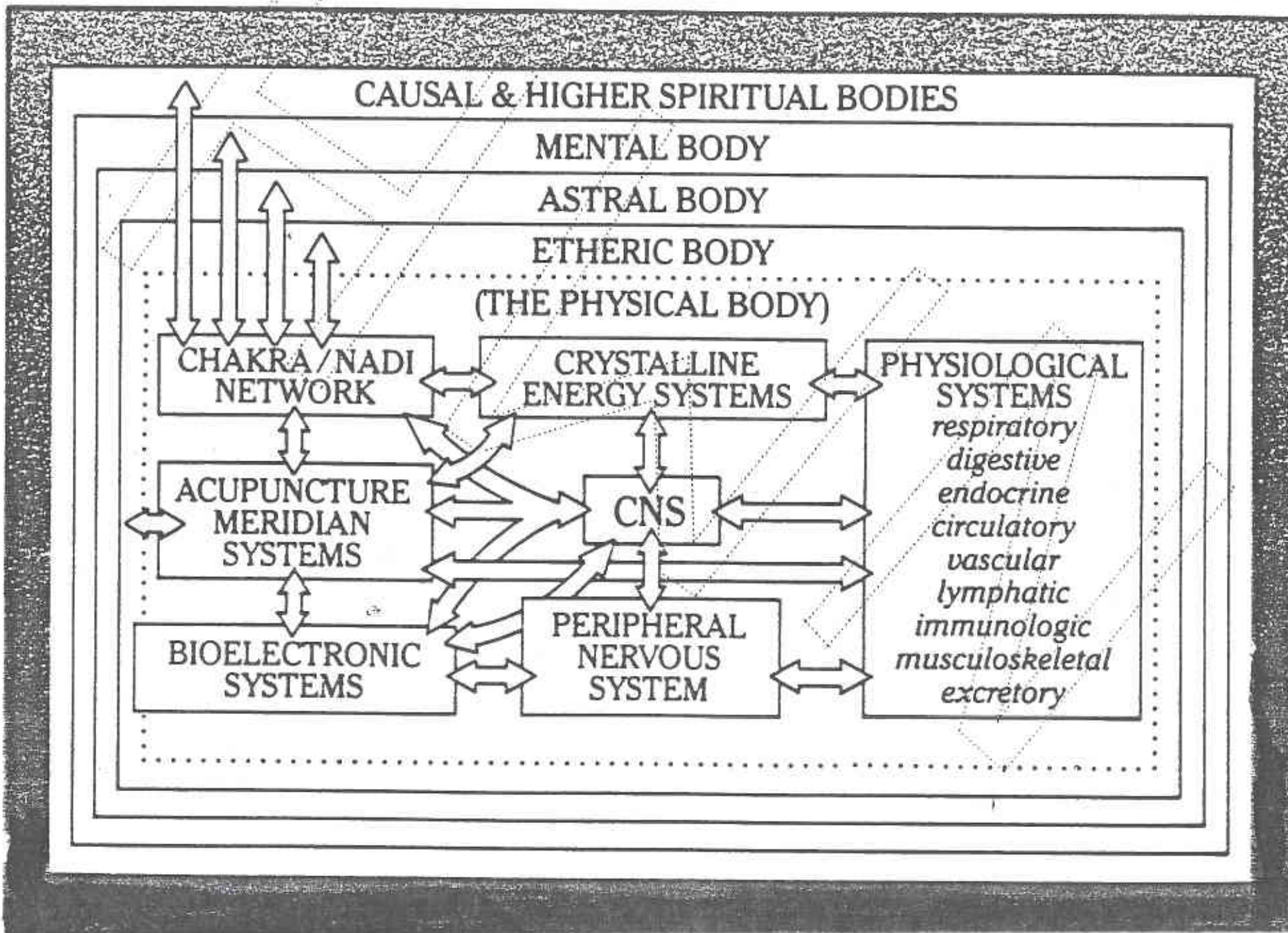


THE HUMAN BIOENERGETIC SYSTEM



This data is the property of H. W. Ninzel and therefore is subject to a Restricted Disclosure. Notice: Use or disclosure of data contained on this sheet is subject to the restriction on the title page of this document.

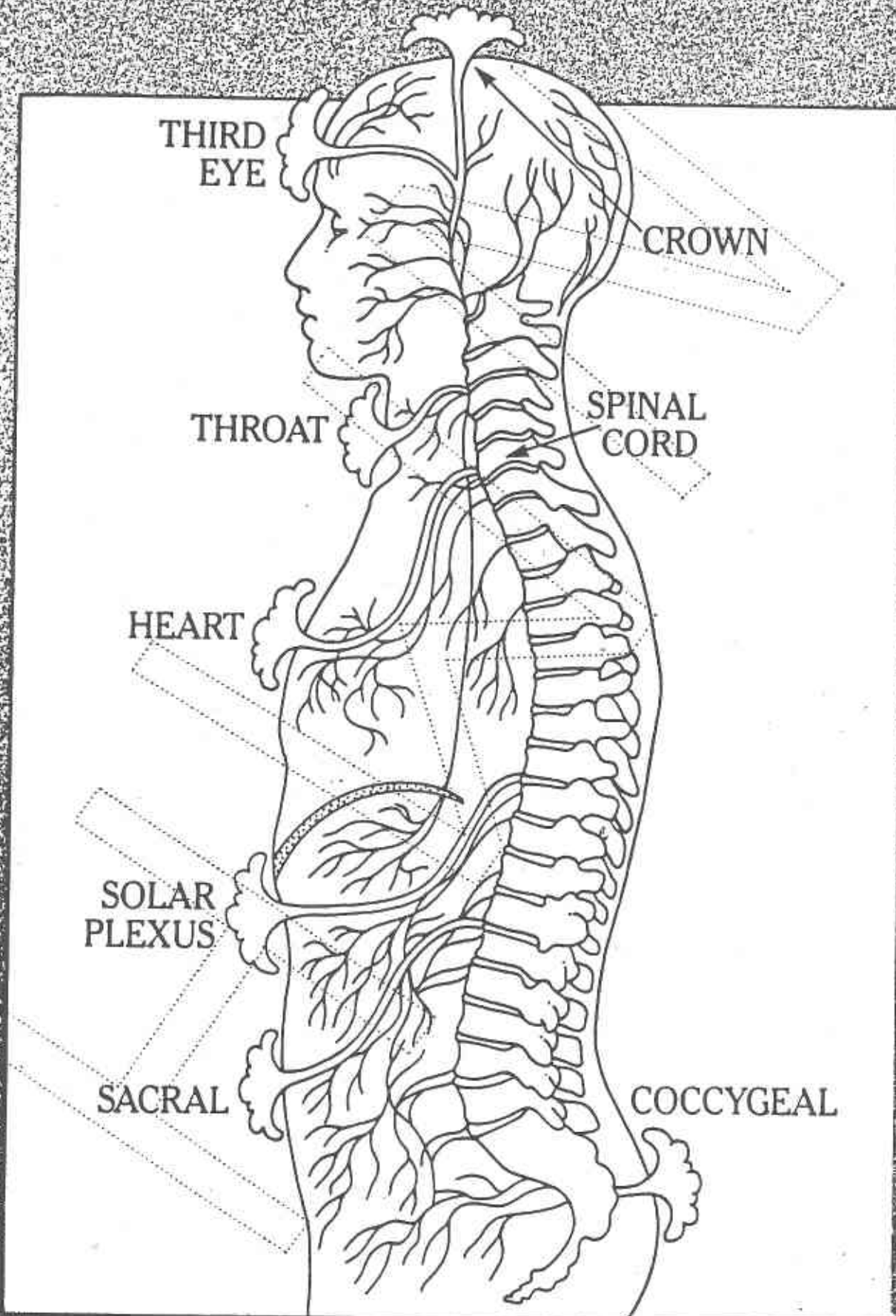
SUBTLE ENERGIES OF THE SEVEN CRYSTAL SYSTEMS

CRYSTAL SYSTEM	RAY	ENERGETIC NATURE	CHAKRA AFFECTED
TRICLINIC	Yellow	Completion	Crown
MONOCLINIC	Blue Violet	Pulsation Movement	Third Eye
ORTHORHOMBIC	Orange	Protection Encompassing	Throat
TETRAGONAL	Pink	Balancing	Heart
HEXAGONAL	Green	Growth Vitality	Solar Plexus
CUBIC	Cobalt Blue	Fundamental Earth-Nature	Sacral
TRIGONAL	Red	Energizing	Coccygeal

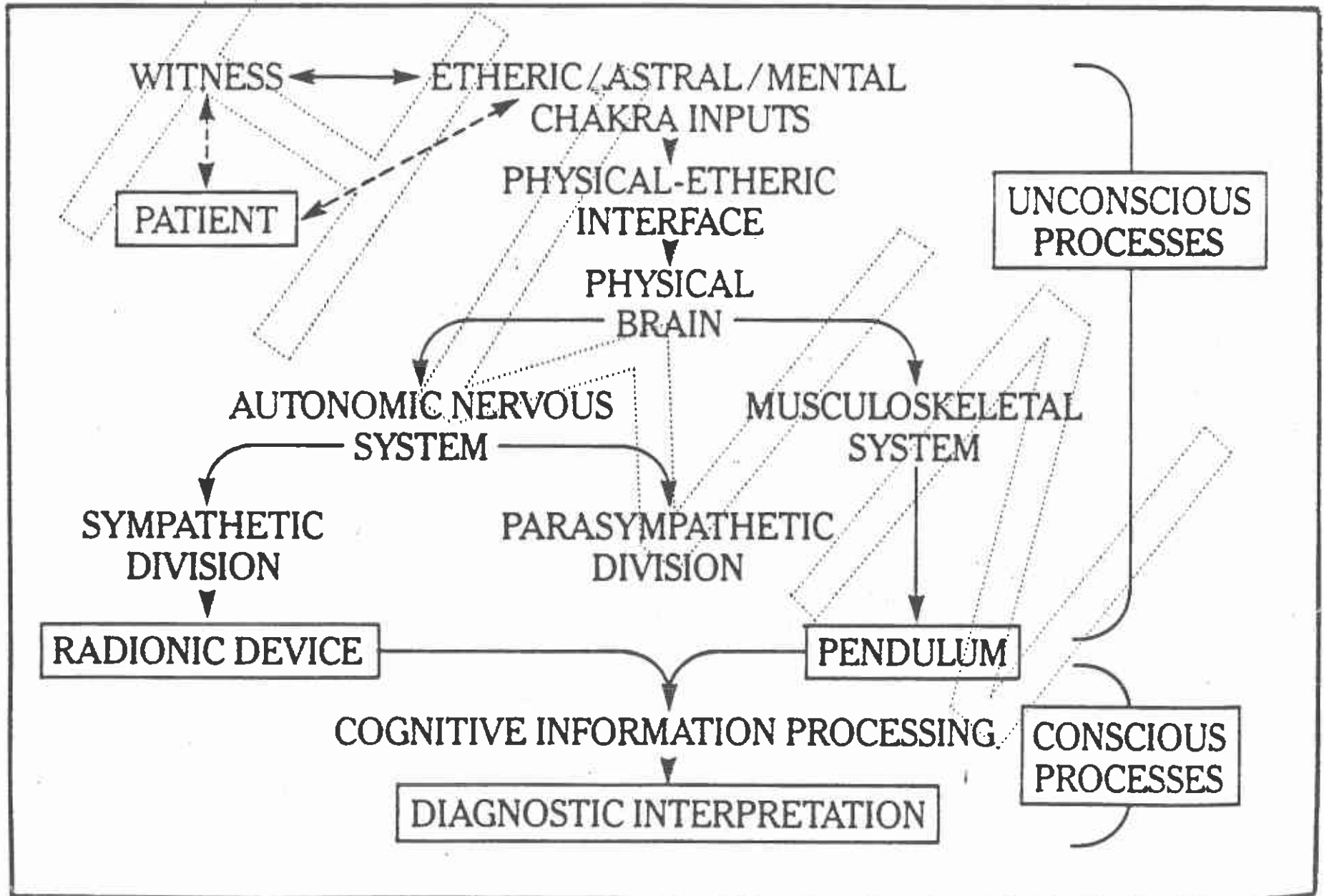
NEUROPHYSIOLOGICAL & ENDOCRINE ASSOCIATIONS OF THE CHAKRAS

CHAKRA	NERVE PLEXUS	PHYSIOLOGICAL SYSTEM	ENDOCRINE SYSTEM
COCCYGEAL	Sacral-Coccygeal	Reproductive	Gonads
SACRAL	Sacral	Genitourinary	Leydig
SOLAR PLEXUS	Solar	Digestive	Adrenals
HEART	Heart Plexus	Circulatory	Thymus
THROAT	Cervical Ganglia Medulla	Respiratory	Thyroid
THIRD EYE	Hypothalamus Pituitary	Autonomic Nervous System	Pituitary
HEAD	Cerebral Cortex Pineal	CNS Central Control	Pineal

THE SEVEN CHAKRAS & AUTONOMIC NERVE PLEXUSES



DIAGNOSTIC APPLICATIONS OF RADIESTHESIA: PATHWAYS OF INFORMATION FLOW IN RADIONIC SYSTEMS



This data is the property of H. W. Birzard and therefore is subject to a restricted Disclosure.
Notice: Use or disclosure of data contained on this sheet is subject to the restriction on the title page of this document.

ENERGETIC DYNAMICS OF THE CHAKRAS

CHAKRA		POSITION	INNER ASPECTS	FORCES	NATURE
I	ROOT	Base of Spine	Grounding	Kundalini	PHYSIOLOGIC
II	SACRAL	Below Umbilicus	Emotion Sexuality	Prana	
III	SOLAR PLEXUS	Upper Abdomen	Personal Power	Lower Astral	PERSONAL
IV	HEART	Mid Chest	Love	Higher Astral	
V	THROAT	Neck	Communication Will	Lower Mental	
VI	BROW	Forehead	Intuition Inner Vision	Higher Spiritual Forces	SPIRITUAL
VII	CROWN	Top of Head	Spiritual Seeking		