

The New World Order

Washington D.C. and Masonic/Luciferic Symbolism

By theforbiddenknowledge.com

As you can see on the back of the U.S. one dollar bill there is a pyramid with the All-Seeing-Eye of God, with the message, "New Order of The Ages" or "New World Order."



You are about to learn that the U.S. Government is linked to Satanism. You have already learned that the U.S. Government is linked to several other governments and the church. And that it is all run by the secret society Brotherhood.

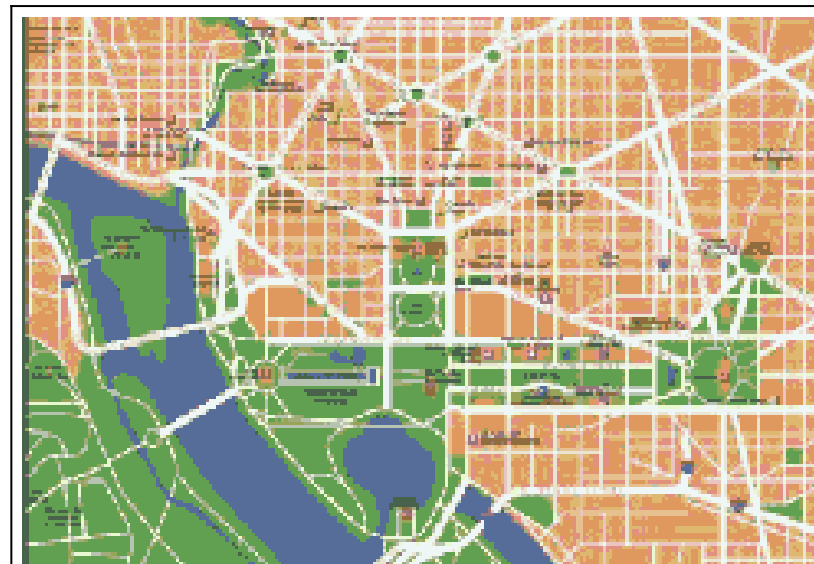
The street design in Washington, D.C., has been laid out in such a manner that certain Luciferic symbols are depicted by the streets, cul-de-sacs and rotaries. This design was created in 1791, a few years after Freemasonry assumed the leadership of the New World Order, in 1782.

In Europe, occult leaders were told by their Familiar Spirits as early as the 1740's that the new American continent was to be established as the new "Atlantis", and its destiny was to assume the global leadership of the drive to the New World Order.

The United States of America was chosen to lead the world into this kingdom of Antichrist from the beginning. The capital is Washington, D.C.



In 1791, Pierre Charles L'Enfante (the designer, who was a Freemason), laid out Governmental Center of Washington, D.C., he planned more than just streets, roads, and buildings. He hid certain occultic magical symbols in the layout of U.S. Governmental Center. When these symbols are united they become one large Luciferic, or occultic, symbol.





Washington D.C. An untrained eye might not see the Luciferic connection in this map.

The upper four points of the Goathead represent the four elements of the world, Fire, Water, Earth, and Air. The bottom fifth point represents the spirit of Lucifer. All of which are represented in Washington D.C. (The United States Capital)

Many people have natural tendencies to want to disbelieve unpleasant or frightening truths. Occultists take advantage of this. "Audacity, always Audacity", is a saying the Masters of the Illuminati have always had. Something shocking and so far out and considered to be impossible,..... is Audacity.

People naturally feel that their leaders generally have their best interest at heart whether they be in a democracy or a government of royalty. Leaders may commit errors and may be incompetent. Some people may take solace in their belief that most leaders have their country's best interests at heart, most of the time.

The average citizen in any given country could not conceive that their leaders may consistently have evil in their hearts. And this evil would be towards the very people they are leading.

Since 1776, our leadership (U.S. Government) has been consistently moving us toward the Luciferic New World Order. This leadership has always been working through **Secret Societies, misleading us as to their true intentions.**

This is why our study today is so CRITICAL!!!; it demonstrates, beyond a shadow of a doubt, that our leadership has knowingly and consistently been pursuing a hidden agenda which, when fully carried out, will mean the destruction of our nation(the U.S.) as we know it today and the beginning of the Biblical Great Tribulation. Our leaders are currently calling this system the New World Order!



The U.S. Capital Building

Once they are hidden, these occultic symbols are thought to possess great power. The Snake Basilisk is "**said to have the power to destroy all upon whom it looks**". To a person who is not an occultist, they will have no concept of the true hidden meaning contained within the symbol. And that hidden purpose is to communicate certain meanings to other occultists while hiding this meaning from all non-occultists.

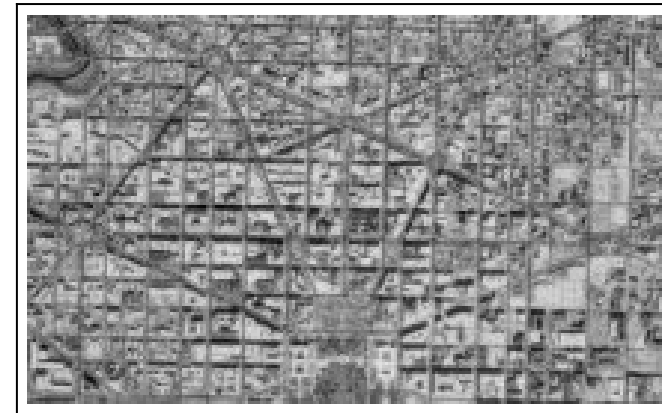
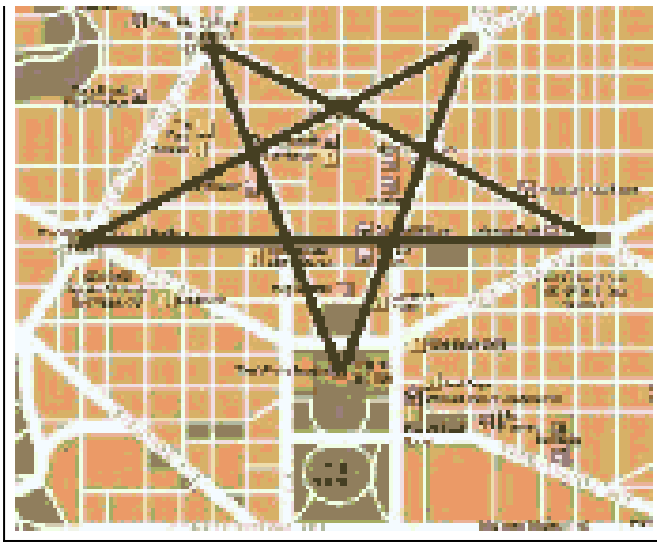
The symbols that were interwoven into the design of Governmental Center, communicate tremendous power to the occultist while at the same time they hide the true meaning from non-occultist. These symbols take on a life of their own, in the mind of the occultist, possessing great inherent power to accomplish the plans of the occultist.



According to occultic/Satanic doctrine, the upper four points of the Goathead(left) represent the four elements of the world, Fire, Water, Earth, and Air. The bottom fifth point represents the spirit of Lucifer. In the above photocopy of the Goathead Pentagram, the fifth point extends down into the mind of the goat, who represents Lucifer. With all that as background, let us now begin our study of Governmental Center, Washington, D.C.

The Satanic symbol & the Masonic layout of Washington D.C.

In the street layout of Washington D.C., the fifth point is the White House, a symbol placement which represents the intention that the spirit and the mind of Lucifer will be permanently residing in the White House. The map I found isn't all that accurate as far as the streets are concerned, but it will have to do.



Lansat satellite image of the White House (below center) and surrounding northern area.

The White House makes up the southern most tip of the Goathead.

In the map above, beginning from top left to top middle:

1. Dupont Circle, Logan Circle, and Scott Circle in the middle, form the top three points of the Devil's Goathead of Mendes, one of the most important types of the Five-pointed Devil's Pentagram.
2. Washington Circle forms the extreme left-hand point of the Goathead.
3. Mt. Vernon Square forms the extreme right-hand point of the Goathead.
4. The White House forms the fifth and bottom point of the Goathead.

There is a **666** evident in the most important top three circles of the Goathead, Dupont Circle, Scott Circle, and Logan Circle. Each of these streets has six major streets coming into them from all angles of the circle. This type of encoding is so typical of the occultist.

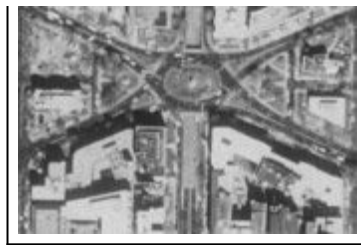
Everything was deliberately planned to stamp the power of Freemasonry and the symbols of its plans for America indelibly upon Government Center in Washington D.C.

The combination of the the Goathead of Mendes, Devil's Pentagram, and the practical existence of the number **666** within the three upper points of the Pentagram, unmistakably shows that Lucifer is planned to be the ultimate master of Governmental Center.





Dupont Circle



Scott Circle

Satellite photos came from Microsoft's Terraserver.

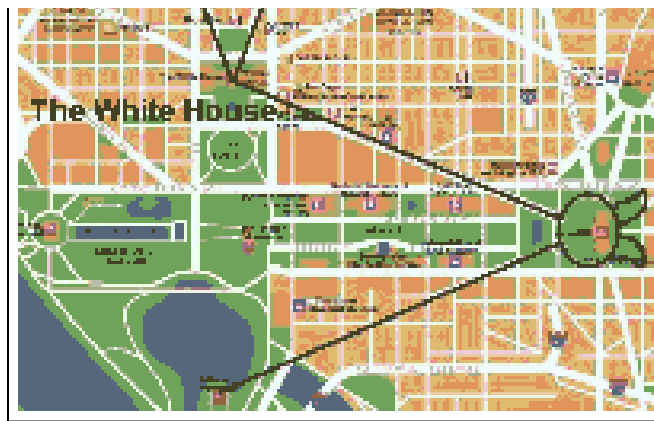
Now look for a moment at the circles which comprise the points of the Pentagon. Washington Circle, Dupont Circle, Scott Circle, and Logan Circle comprise four of the six points of the Pentagon. The only point which is not a circle or a form of a circle is Mt. Vernon Square. We shall return to the discussion of the importance of the square to the occultist, but let us now concentrate upon the circle.



Logan Circle

It is no secret as to why the Masonic architect chose to use circles as four of the points of the Pentagon. As Goodman states in his book, *Magic Symbols*, "**without doubt, the circle is the most important of all units in magic symbolism, and in almost every case where it is used, the circle is intended to denote spirit, or spiritual forces**". Therefore, we can know with certainty that these circles of this Pentagon were used to denote powerful spiritual forces. And, of course, these spiritual forces are from Lucifer.





Map of Washington D.C. with outlined Luciferic design.

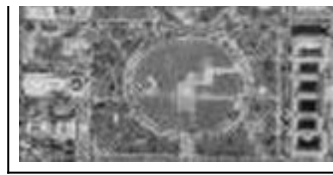
But, there is much more symbolism expressed by the circle in occultic thought. The circle has also been used as a halo above a person's head, denoting that "he or she is in direct communication with the spiritual world".

The circle has also been utilized to represent the Sun, especially in spiritual terms, denoting spiritual light. But, the circle also is utilized as a symbol of the All-Seeing Eye. Remember the All-Seeing Eye atop the pyramid on the American One-Dollar bill? This eye is within a triangle, but the important factor to realize is that the eye is atop a pyramid. Of course, a pyramid is nothing more than a triangle. Look again at the triangles formed by the Goathead Pentagram.

Four out of five triangles of the Goathead has a circle, representing the All-Seeing Eye atop each triangle. However, the architect had a problem with the triangle at the far right, because he chose the square as the anchor point; the solution is to place Thomas Circle at one of the points, thus giving that triangle an All-Seeing Eye. In fact, I believe this is the reason why Thomas Circle was placed in the odd position it was; it is the only circle which was not placed as an anchor of the Pentagram. Even the Southern Point of the Goathead Pentagram, the one which ends at the White House, has a circle at its top. Notice the Ellipse located just to the south of the White House lawn. (below)

North





Lansat image of the White House

Thus, the **FreeMason architect** who drew this pattern intended to show that Governmental Center was planned to be ruled by Satan. Further, the Goathead Pentagram was placed so the Southernmost point, the spiritual point, is precisely centered on the White House. Notice that I did not arbitrarily draw these lines to center on the White House; rather, the White House is the precise point where the two lines formed by Connecticut Avenue flowing from Dupont Circle, and by Vermont Avenue flowing from Logan Circle, intersect. The meaning is all too clear. Occultists planned for the White House to be controlled by Lucifer in accordance with his occultic power and doctrine.



The Goathead.(for your reference)

But, there is still more meaning expressed by this Goathead Pentagram. Quickly look again at the photocopy of the Devil's Pentagram, as copied from Goodman's Magic Symbol book. Protruding from the middle top of the Pentagram is a lighted candle, which is producing light. This physical light represents spiritual illumination. If this representation were made on a map, this illuminating candle would be thought of as being North. North is a very important direction, because it is the place of Governmental control. In I Ching, for example, North is the "place one reports to the master on accomplishments". (New Age Dictionary). This is again a fulfillment of Scripture.

Lucifer

Remember in Isaiah 14:12-14, where God recalls Lucifer's original sin of pride and rebellion? Lucifer had every intention of taking God's throne by force and establishing his own reign. In verses 13 and 14, Lucifer vowed, "I will ascend to Heaven; I will exalt my throne above the stars of God; I will sit upon the mount of assembly in the uttermost north..." Did you see that North is apparently the direction in which God's throne is situated, and Lucifer planned to take it over. North is the place, occultists believe, where Governmental authority dwells.

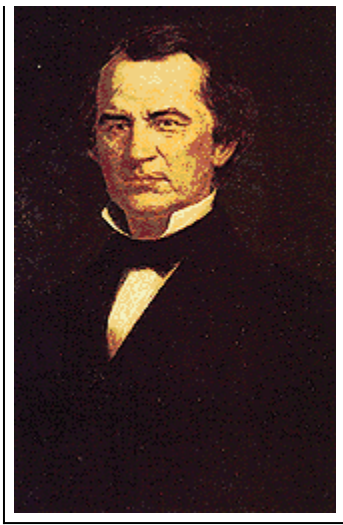
Now look at the Goathead Pentagram again. Scott Circle is precisely located at the middle of the Goathead, and 16th Street proceeds directly north. As you look directly north on 16th Street, you will immediately see the House Of The Temple, which is the North American Headquarters of Freemasonry. Even the number 16 is significant to the occultist; it is 4x4 (Remember that the four upper points of the Goathead Pentagram represent the Four Elements of which the earth is constructed). Number 16 literally means "felicity", which, according to my Webster's Dictionary, means blissful happiness or anything which will produce such a state. Certainly, blissful happiness is the stated goal of any Satanic system. A corollary meaning of 16 is love.

The number 16 also pops up in an encoded manner. Both Dupont Circle and Logan Circle, which form the top two most important points of the Goathead Pentagram, are located on "P" Street. "P" is the 16th letter of the English alphabet.

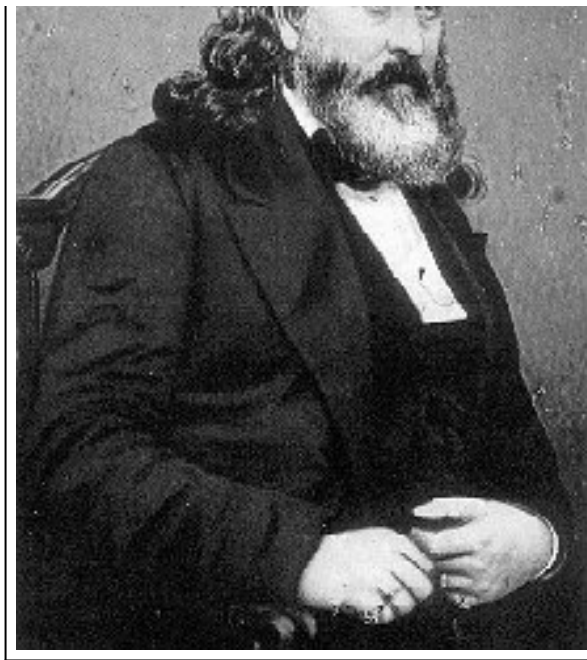
Sixteenth Street emanates north from Scott Circle, which is itself the precise middle of the Goathead Pentagram. This street represents the candle of the photocopy. The illuminating light of the candle is represented by the House Of The Temple, which begins on "R" Street. The architect is literally saying that Freemasonry is the spiritual light of this Goathead Pentagram; of course, this Goathead Pentagram is rooted at the White House. One quick word on "R" Street. The letter "R" is the 18th letter of the English alphabet, and 18 is critically important to the occultist because it is **6+6+6**.

The House Of The Temple is also located 13 city blocks north of the White House. Count them yourself, beginning with the first city block north of Lafayette Square. Of course, the number 13 represents rebellion against God's authority, and is generally thought of as Satan's number. It is no accident the House Of The Temple is located 13 blocks north of the White House. The meaning occultically transmitted is that the control of the White House would be spiritual and would emanate from the House Of The Temple. Certainly, many American Presidents have been Freemasons. The most famous is George Washington, but the most influential was Franklin D. Roosevelt, who did more to advance the cause of the New World Order than anyone else in American history.

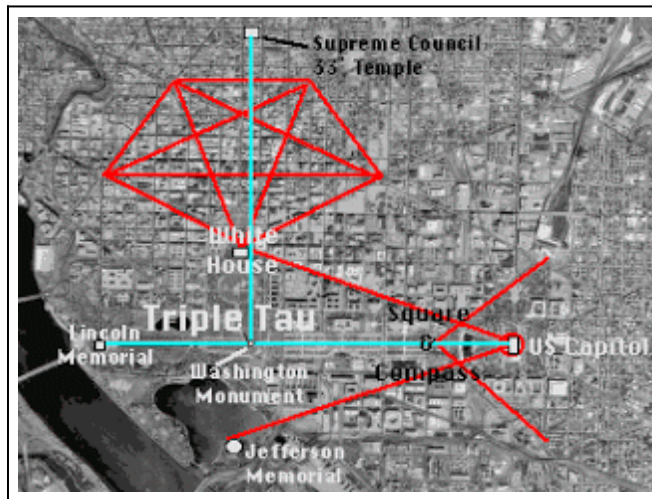




Seventeenth President Andrew Johnson
1865-1869



Brig General Albert Pike
(1809-1891) Confederate



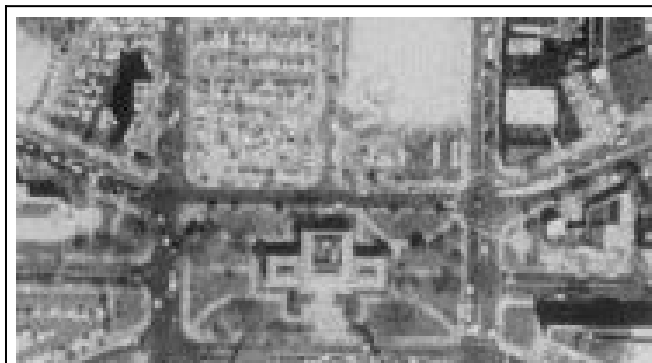
The critical importance of this symbolism pointed out above, namely, that the Presidency of the United States is to be controlled by Freemasonry, is thoroughly documented by Christian author, Ralph Epperson, in his book, "The New World Order".

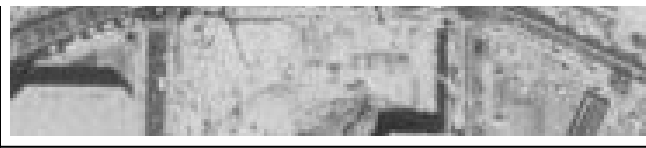
On page 171, Epperson quotes testimony given in March, 1867, before the House Judiciary Committee, by General Gordon Granger. General Granger related a meeting between himself, President Andrew Johnson, who was a Mason, and Albert Pike, the most famous of all Masons. General Granger reported his surprise that President Johnson considered himself to be subordinate to Albert Pike. This subordination is detailed in the oath the initiate takes during the Third Degree, called the Master Mason's degree, inside the Blue Lodge. This oath states, "I do promise...that I will obey all...summonses..given..to me from the hand of a Brother Master Mason ..." Presidents who are Masons are obligated to take orders from their Master Masons. But why should we be surprised? This is the meaning of the symbolization contained by the House Of The Temple being precisely 13 city blocks north of the White House.



The Pentagon

Now, let us quickly examine the importance of the square to the occultist. We need to understand this because the Eastern point of this Goathead Pentagram is a square, not a circle. The square is comprised of two (2) vertical lines and two (2) horizontal. According to Goodman in his book, "Magical Symbols," the vertical line symbolizes spirit. This spiritual force may move either from Heaven to Earth or from Earth to Heaven, or even from Heaven to Hell. The horizontal line symbolizes matter and movement from west to east. It also describes movement in time, as a direction in which one is traveling. This point is very critical, because the Freemason is committed to taking America in the direction of the New World Order. Since the square combines the vertical and the horizontal, it becomes a symbol of the material, physical realm which is enmeshed with spirit and time. The passage of time within an occultic spiritual context is what is in view here. In this instance, the United States of America is the physical realm which is moving in time toward the desired direction of the New World Order.





Mason Headquarters (Mt. Vernon Square)

This square also contains one more piece of occultic meaning. In this Goathead Pentagram, Mt. Vernon Square is the Eastern point. In occultic doctrine, East is the direction from which a person receives spiritual knowledge and guidance. This belief originated in the Pagan worship of the Sun, and it is very much alive in **Freemasonry today.**

Now, let us look at the symbol contained in the lower right hand portion of your Washington , D.C., city street map. This combination of symbols runs South and East from the White House to the United States Capitol. These are the symbols which clearly stamp Freemasonry upon this city, and which unmistakably reveal that the brand of Luciferic worship which we see in the Goathead Pentagram is the brand practiced by Freemasonry. Let us look at these Freemasonry symbols.



The three most sacred symbols of Freemasonry are the Compass, the Square, and the Rule or straight-edge. Look at the United States capitol, and you will see that it is laid out in the form of a circle. This represents the top of a professional compass of that era, which was circular. Pennsylvania Avenue, running from the Capitol to the White House, represents one leg of the compass. Maryland Avenue, running from the Capitol to Thomas Jefferson Memorial (left), represents the second leg of the compass. In this instance, you will have to lay out a ruler and draw a solid line from the Capitol to the Jefferson Memorial to get the full effect, because Maryland does not run straight through. It runs for a while and then disappears only to reappear again further toward the Memorial. However, you can easily see that the general direction runs precisely toward the Jefferson Memorial.

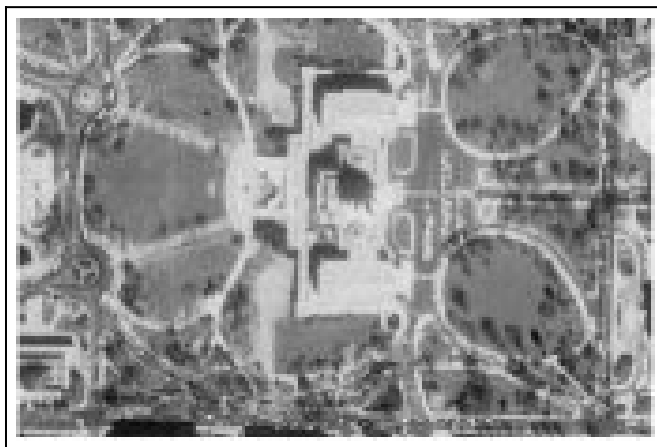
This is the compass of Freemasonry.

The Freemason's Square begins at Union Square, with Louisiana Avenue forming one arm and Washington Avenue the other. Again, you will have to draw a line down Louisiana Avenue and Washington to see the fully-formed square, because Louisiana ends at Pennsylvania and Washington ends at Maryland. The critical 900 angle of the square is pictorially missing; however, once you draw the natural continuation of Louisiana and Washington beyond their termination points you will see the

900 square perfectly formed.

The Freemason's Rule, or straightedge, is clearly seen if you draw a straight line south from the White House center to the base of the Washington Monument and then straight East to the Capitol.

Thus, all three of the sacred instruments of Freemasonry are depicted in the layout of these streets. As I stated earlier, the deliberate planning of these Governmental Buildings so that they would be laid out so as to represent these three sacred tools of Freemasonry, coupled with the Luciferic Goathead Pentagram, clearly tell us that the brand of Luciferic control and worship planned for this capitol city was Freemasonry. This clearly shows that the New World Order for which FreeMasonry has labored for so many years is Luciferic, their vigorous protestations to the contrary notwithstanding.



But there is more. Look again at the United States Capitol (above). At the extreme Eastern side of the Capitol, you can see two cul-de-sacs which are irregularly shaped. In fact, when you draw a bold black line carefully around these cul-de-sacs, and continue the black line around the Capitol, you get the appearance of a horned owl, with the cul-de-sacs as its ears. This is not accidental, either. This is another way of representing Satan. Freemasonry designed the layout of Washington D.C. they placed the owl there and on the **American One Dollar Bill**.

The Southern point of the Goathead Pentagram represented the spirit of Satan reaching into the mind of the goathead, the owl represents the same meaning. In other words, both the Executive and the Legislative Branches of Government are to be controlled by Satan (II Corinthians 4).

In commemoration of the 190th anniversary of the birth of George Washington, 48 American flags representing the then 48 states of the Union, encircling the monument, were raised on February 22, 1922. The current configuration of the more durable

aluminum flagpoles date to 1959, following the inclusion of Alaska and Hawaii into the Union as the 49th and 50th states.



Let us now quickly look at the Washington Monument, which lies directly West of the Capitol. In fact, the Washington Monument lies on a straight line, precisely 900 West of the Capitol. The Washington Monument(left) is the most important Presidential monument to the occultist, because it is an obelisk set inside a circle. What, you are probably saying, is an obelisk? An obelisk is a tall, four-sided stone pillar tapering toward a pyramidal top.

The obelisk is critically important to the occultist because they believe that the spirit of the ancient Egyptian sun god, Ra, resided in the obelisk.

Thus, the obelisk represents the very presence of the sun god, whom the Bible calls Satan!!

There are only three major obelisks in the world today, and two of them are in the United States. According to Epperson in his book, "The New World Order", the first major obelisk was constructed in St. Peter's square in Rome, and is so placed that every Pope who addresses any crowd in the square, must face the obelisk. A New Age author, Peter Tomkins, reports the same facts in his book, "The Magic Of Obelisks", Harper and Row, New York, 1982, ISBN 0-06-014899-3.

There is an obelisk in St. Peter's Basilica as well. You'll be shocked to know that the Church of God promotes Celibacy while displaying a sex act right outside of St Peter's Basilica.

The second obelisk was brought to America in 1881 from Alexandria, Egypt, and was placed in Central Park in New York City.

The third obelisk is the Washington Monument, built to commemorate our First President, George Washington (who was a Freemason). In light of the symbols which we have just studied, which have been built into the layout of Government Center, I believe the Washington Monument was constructed by Masons, according to Masonic tradition, as a symbol that this country

was controlled by Freemasonry from the very beginning. And the Washington Monument has Freemasonry stamped all over it:

- * It is built from 36,000 separate blocks of granite. The number 36 is derived from multiplying 3×12 and is an important number.

- * Its capstone weighs exactly 3,300 pounds.

- * The monument contains 188 specially donated Memorial stones, most of them donated by individuals, societies, cities, and nations throughout the world. But, Masonic lodges throughout the world contributed 35 of these Memorial stones. These 35 blocks were intermingled with the other Memorial stones, but the last several of them were placed at the 330 foot level.

- * The total cost of the Washington Monument was reported to be \$1,300,000, showing again a most important Masonic number, 13.

- * The Monument has 8 windows, and together they total 39 square feet in size. The number 39 is very sacred because it is formed by multiplying 3×13 AND 39 divided by two is 19.5 which is another significant masonic number. And, also remember the importance of the Number 8 in Occultic Numerology, for it carries the meaning of "New Beginnings". Combined with the meaning of Number 13, as "Extreme Rebellion", you get the total message that this "New Beginning" {New World Order} is to be carried out in "Extreme Rebellion." I believe this to also be connected to the UPC/EAN 13 BarCode specification(Mark of the Beast).

There are several other, more complicated Masonic numbers concealed within the construction of the Washington Monument, but you get the point:

This monument, constructed to honor the first Masonic President, was designed so that both the White House and the Capitol face toward it so that the leaders of both branches have to face the spirit of Lucifer thought to be residing in it. This is typical occultism.

One final interesting note. We reported earlier in this article that the Washington Monument obelisk was placed directly on a straight line, precisely 900 West of the Capitol. Thus, the inhabitants of the Capitol could face the obelisk daily. However, note that the Washington, D.C., obelisk does not lie in a straight line 900 South the White House. Why? Because it was lined so that it lies in a straight line 900 from the House of Understanding, the headquarters of FreeMasonry!! In the mind of the occultist, the true political Administrative power resides in this Freemasonry headquarters, not in the White House. This is why President Andrew Johnson considered himself to be the subordinate to Albert Pike, the leader of North American FreeMasonry!

Clearly, the power of leadership to drive this country toward the New World Order, leading the rest of the world, lies in FreeMasonry, not in the White House or the Congress. These symbols, built into the physical layout of Government Center in Washington, D.C., represent the extent of that power. Think of the many years these symbols have remained hidden from most people's knowledge; think of the millions of tourists which have walked on these streets during this time, without having any idea as to the existence of these symbols, not to mention their meaning! And, if you have ever driven a car in Washington D.C.

area, you will now understand why these streets seem to be laid out so weird! Driving in Washington D.C. can be a nightmare. Now you know why.

I will challenge any one to try and disprove this information. The odds against this happening accidentally are so astronomical and ridiculous! Do you see irrefutable evidences of a conspiracy here?

And, now the end is apparently in sight. The Third World War, envisioned by Albert Pike in 1870 between Israel and her Arab neighbors, is apparently at hand. Out of this war is to come Antichrist. Are you spiritually ready? Is your family? Are you adequately protecting your loved ones?

From the rest of my website, you should make the connection that the Churches and Governments are all controlled by this Brotherhood as well.

Statue of Liberty



The Statue of Liberty is another brotherhood symbol highlighting the lighted torch, Statue of Liberty is actually the Statue of Liberties - the liberties perpetrated on the American people by the brotherhood. It was given by French freemasons, a mirror image stands on an island in the river seine in Paris.

Initiates into the rites of Mithra were called lions and were marked on their foreheads with the Egyptian cross. The first degree initiates had a golden crown placed on their heads, representing their spiritual self, and this crown, symbolizing the rays of the sun, can be found on the Statue of Liberty in NY harbor. All these rituals went back thousands of years to Babylon and the stories of Nimrod, Queen Semiramis, and Tammuz, their version of Jesus Mathra was said to be the son (Sun) of god who died to save humanity and give them eternal life. One classic symbol of Mithra was a lion with a snake curled around his body, while he holds the keys to heaven.





Better Business Bureau, Notice the Torch?

The individuals who are in control of this world are not who they might seem. They are evil spirits set out to enslave other spiritual beings,.... us! Christ was trying to teach us the truth about spirituality but they had Him killed for trying.

I do respect all those who died defending our 'freedom', but it is time to wake up and realize who the REAL enemy is!

The American flag is a symbol of the Brotherhood and the Brotherhood is linked to Satanism. The Flag has 50 pentagrams on it with thirteen stripes. But again, as mentioned in an earlier page, the number 13 is not evil. They have programmed us to think that it is evil because they do not want us to go near the knowledge that is behind it.

1777: June 14 -- Continental Congress adopts the following: Resolved: that the flag of the United States be **13** stripes, alternate red and white; that the union be thirteen stars, white in a blue field, representing a new constellation. (stars represent Delaware, Pennsylvania, New Jersey, Georgia, Connecticut, Massachusetts, Maryland, South Carolina, New Hampshire, Virginia, New York, North Carolina, and Rhode Island)

Delaware: - December 07, 1787

Connecticut: - January 09, 1788

Georgia: - January 02, 1788

Maryland: - April 28, 1788

Massachusetts: - February 06, 1788

New Hampshire: - June 21, 1788

New Jersey: - December 18, 1787

New York: - July 26, 1788

North Carolina: - November 21, 1789

Pennsylvania: - December 12, 1787

South Carolina: - May 23, 1788

Rhode Island: - May 29, 1790

Virginia: - June 25, 1788

New World Order

Social Media - Share Or Like This Blog - Link To This Site, Inform Others, Let Others Know

[Share](#) 5 [Share](#) 0 [Tweet](#) 0 [Share](#) 0 [Pin](#) 0 [Email](#) 0 [Like](#) 0

Search This Site (Lots Of Articles)

[AdChoices](#)

[View Map](#)

[Map Washington DC](#)

[Illuminati](#)

[Street View](#)

Articles On The New World Order, Conspiracy, Bible Prophecy, And Secret Societies - (html pages) - [List 1](#) [List 2](#) [List 3](#) or in a PDF file

"God so loved the world that He gave His only Son, so that whoever believes in Him should not perish, but have everlasting life." John 3:16. "For whosoever shall call upon the name of the Lord shall be saved." Romans 10:13

[AdChoices](#)

[View Map](#)

[Map Washington DC](#)

[Illuminati](#)

[Street View](#)

Fair Use Notice

Select Language

Powered by [Google Translate](#)

**Free Prophecy Ebook, Nobody Died At Sandy Hook - Free Ebook, NWO Blog For Your Smart Phone - - An
Android App, New World Order - Blog, New World Order - PDF**

Powered by Blogger.