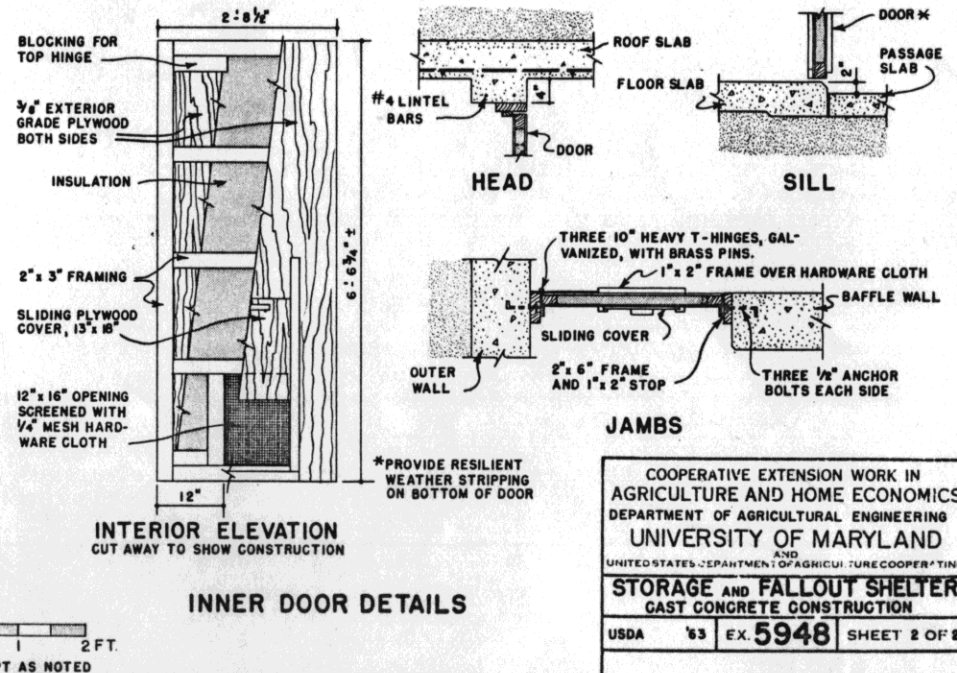
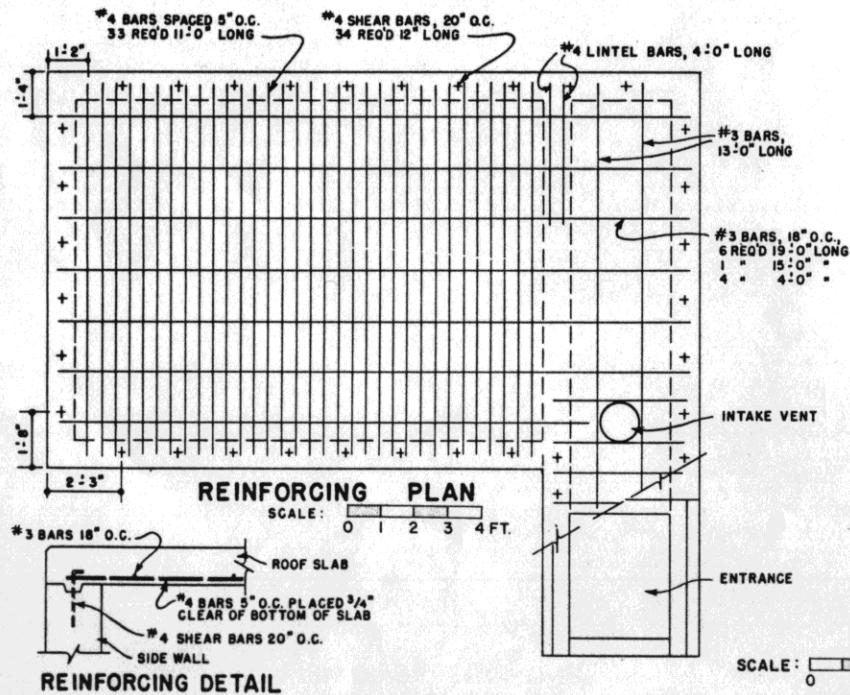
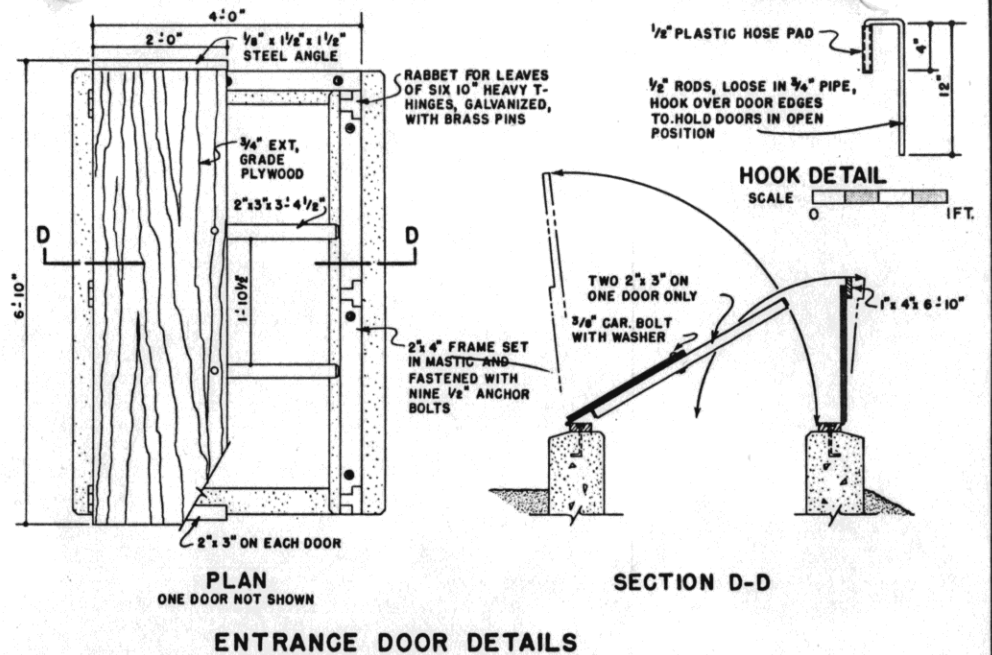
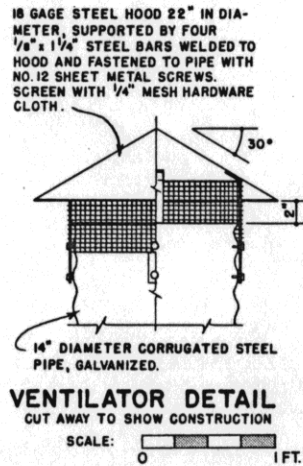
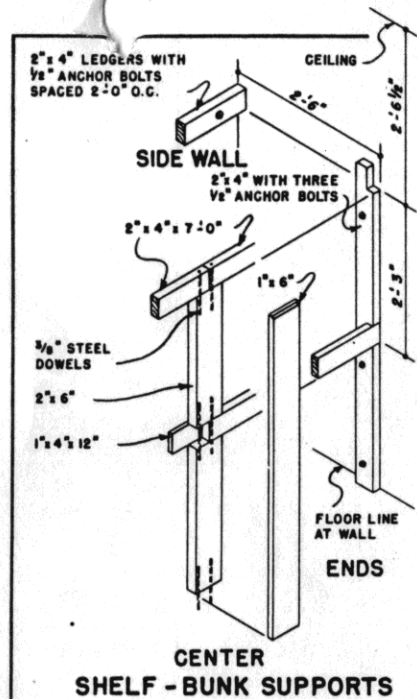


ELECTRIC SERVICE ENTRANCE CABLE, TYPE UF, IS BURIED AT LEAST TWO FEET, LOOPED AND BROUGHT THROUGH WALL IN CONDUIT. PLUG CONDUIT TO MAKE WATERTIGHT.

SERVICE PANEL IS FUSED SAFETY SWITCH FOR ONE 20 AMPERE 120 VOLT CIRCUIT.

OUTLETS AND SWITCHES ARE WEATHER-PROOF GROUNDING TYPE. CIRCUIT WIRING IS No. 12 UF WITH BOND WIRE.



COOPERATIVE EXTENSION WORK IN AGRICULTURE AND HOME ECONOMICS
DEPARTMENT OF AGRICULTURAL ENGINEERING
UNIVERSITY OF MARYLAND
UNITED STATES DEPARTMENT OF AGRICULTURE COOPERATING

STORAGE AND FALLOUT SHELTER
CAST CONCRETE CONSTRUCTION

USDA '63 EX. 5948 SHEET 2 OF 2