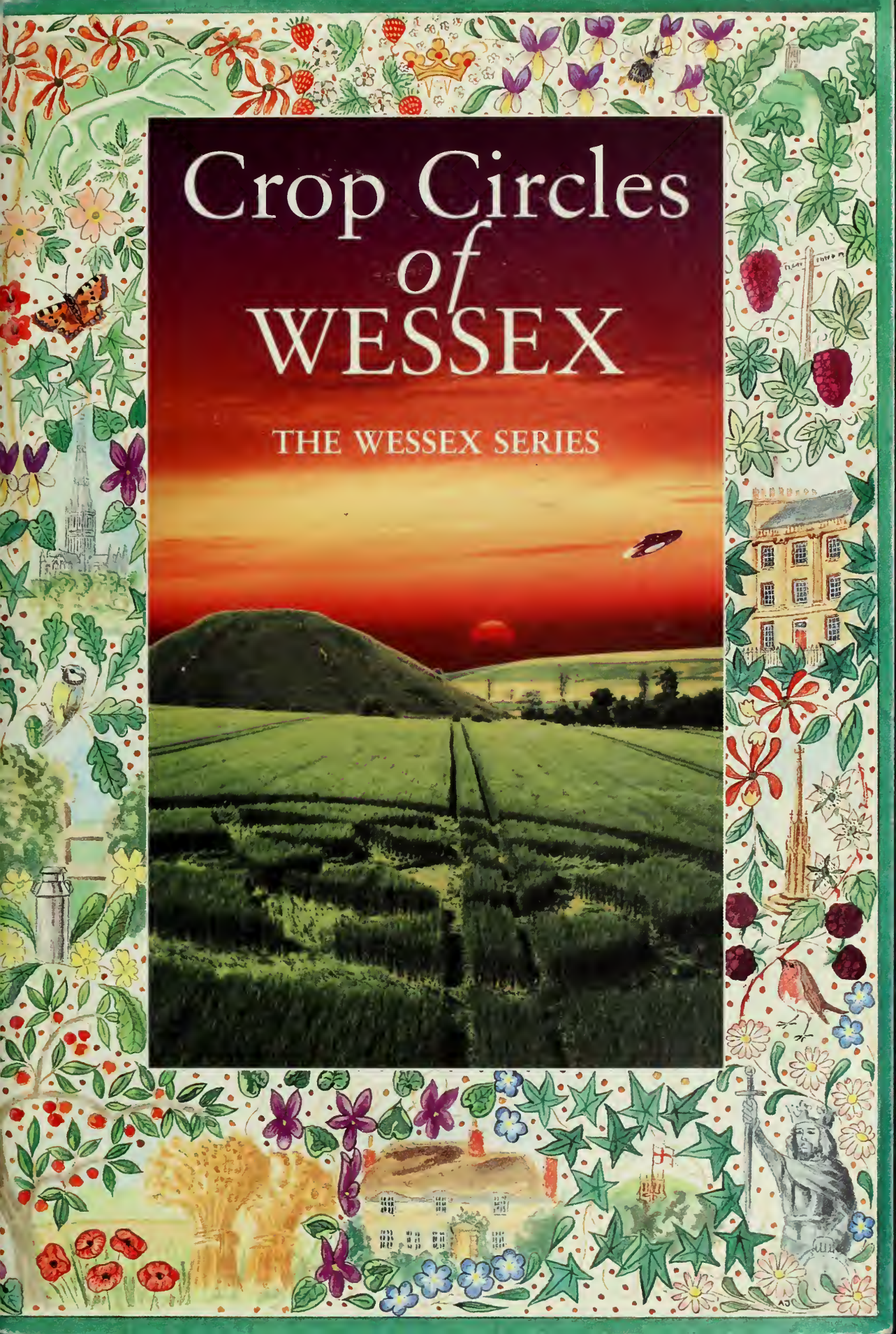
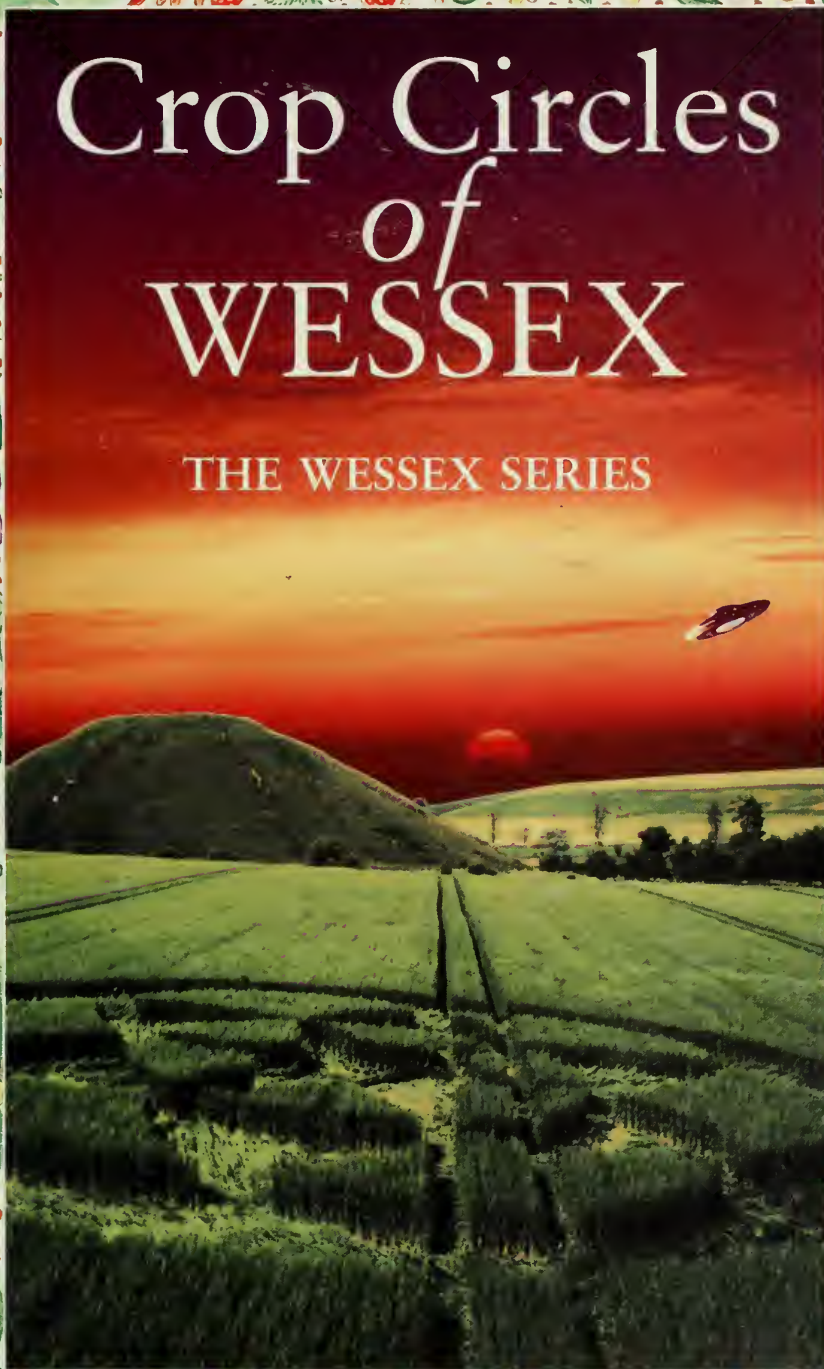


Crop Circles *of* WESSEX

THE WESSEX SERIES



Contents



Above:
One of the most well known formations was the DNA pictogram at Alton Barnes. For more information see page 22.

Foreword	1
Mysterious and magical	2
A Brief History of Crop Circles	4
Natural conditions connected with crop circles	4
The Wessex Triangle	4
What to look for in Crop Circles	6
Crop circles of the last twenty-five years	6
Stonehenge Julia Set	7
Floor patterns	8
The Question of Hoaxing	9
The Barbury Triangle	10
The Modern Development of Crop Circles	11
The Ickfield Mandelbrot	13
Map for Wessex Crop Circlers	14
Theories and Beliefs	16
The Windmill Hill Triple Julia Set	18
Biological causes of crop circles	19
UFOs	20
Alton Barnes Double Helix	22
Earth Energies	22
Some Important Crop Circles	24
More Theories and Beliefs	26
Ancient symbols	26
Neo-pagans	26
The Earth itself	26
The Military	26
Epilogue	28
Glossary	28
Brief bibliography	29
Acknowledgements	29

Foreword

Crop circles are a phenomenon to conjure with. Their appearance is always unexpected, unpredictable and unexplained. Many have appeared in the ancient and mysterious land of Wessex, along with UFO sightings. There was a huge spate of UFO activity in the 1970s, especially in the area of Warminster which has since been dubbed The UFO Capital of Europe!

Deer, disease and the devil have been used as scapegoats in the past, but now we look to other explanations for the mystery of Crop Circles. All of them are considered in this excellent introduction to the subject.

Below:

The enigmatic Silbury Hill, the largest man-made earthwork in ancient Europe, stands as silent witness to a forgotten age and has been the focus of repeated crop circle activity.

Reg Presley



Crop Circles *of* WESSEX

by
Kent Goodman

**Mysterious and
magical**

There is a certain unmistakable air of mystery that clings to the ancient kingdom of Wessex. Whether because of psychic impressions left by thousands of years of habitation, currents of 'earth energy' coarsing through the landscape, or purely natural causes, one thing is certain: Wessex in general, and the Wessex Triangle in particular, is home to the unusual and



unexplained. Once the literal stomping grounds of King Arthur himself, the Wessex landscape features the Stonehenge and Avebury circles, enigmatic Silbury Hill, hundreds of ancient burial mounds, scores of UFOs, mysterious black cats and dogs, ghosts, witches and most famously, crop circles.

Crop circles, or agriglyphs, as they are increasingly called because of their design, were first brought to public attention in the 1980s (although this book will show that there is evidence of them as far back as about 1650). Since that time, these pictograms, appearing during the summer in cereal crops (predominantly), have grown in sheer numbers and complexity. To make some sense of it all, a number of theories have been put forward, encompassing everything from plasma vortexes to ley lines, although most lay people still think that they are made either by aliens or hoaxers.

This book will attempt to give a brief view of the entire crop circle phenomenon – the history, the patterns and the theories. While it is not intended as an exhaustive study of any of the areas covered (many of the excellent books available for the serious researcher are listed in the Bibliography on p.28), it will very likely whet the reader's appetite for further study.



Above:
Standing stones pepper the Wessex landscape, including this one at Avebury.

Crop circles are often hard to see from the road, like the one shown here near Yatesbury, Wiltshire. They are usually best viewed from the air.

A Brief History of Crop Circles

Below:

There have been many explanations for the cause of crop circles including damage by such creatures as illustrated in Thomas Bewick woodcuts.

However there is still no definitive answer.

Natural conditions connected with crop circles

The Wessex Triangle

Crop circles are not a new phenomenon. Farmers have noticed the unusual flattened circles in their fields for some time. As a matter of fact, some researchers suggest that the circles have been part of the landscape since pre-Celtic times. However, in the old days, country folk thought these enigmatic formations were the result of natural causes, with rutting deer or hedgehogs being the most likely suspects. Birds such as crows and rooks are also a common sight in fields of mature cereal crops, where they gather in a circle to feed on the ripened seed heads, trampling the crop underneath in a ring.

Other causes of circular damage were thought to be strange diseases, which the owner would certainly not want to talk about for fear of losing a buyer. Before the 1900s, circle damage was often attributed to fairies, or even the devil. In any case, the circles were often not reported, for economic reasons, fear of ostracism from the community and also because they weren't thought of as unusual.

With very few exceptions, crop circles are created at night. Although they may in fact appear most of the year, conditions are only right for viewing them between early May and late September in Wessex. All other attempts to pin them down are fruitless. They may or may not depend on local weather conditions, although they do appear rain, shine or fog. They might form in close proximity to hills – or they might not. They have been found on all types of soil worldwide but perhaps the chalk soil of Wessex is especially suitable. The force that often accompanies them can have a buzzing electronic sound, or a loud roar – or it can be completely silent. It might come from the sky, emanate from the earth, or both. Or neither.

A large proportion of the crop circles appear in the Wessex Triangle: its cardinal points are the areas around Silbury Hill, Warminster/Westbury and Winchester. Besides crop circles, the Triangle also boasts a large number of UFO reports, as well as the largest and oldest stone circles – Avebury and Stonehenge. It is



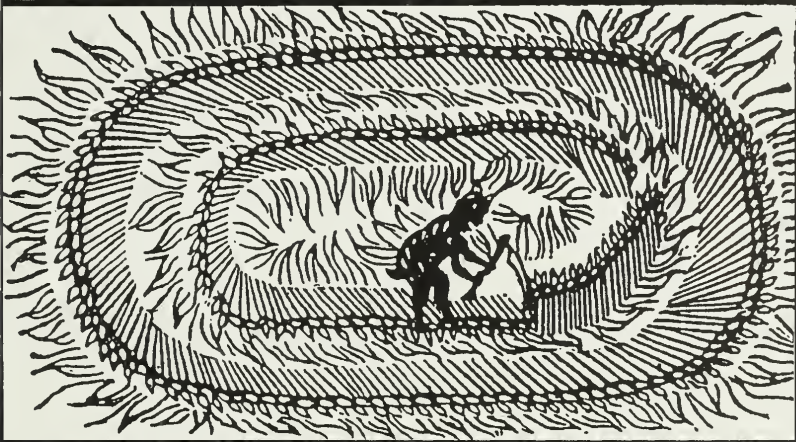
The Mowing - Devil :

Or, Strange NEWS out of

Hartford - shire.

Being a True Relation of a Farmer, who Bargain'd with a Poor Mower, about the Cutting down Three Half Acres of Oats; upon the Mower's asking too much, the Farmer swore, That the Devil should Mow it, rather than He. And so it fell out, that that very Night, the Crop of Oats drew'd as if it had been all of a Flame; but next Morning appear'd so neatly Mow'd by the Devil, or some Infernal Spirit, that no Mortal Man was able to do the like.

Also, How the said Oats ly now in the Field, and the Owner has not Power to fetch them away.



Licensed, August 23th, 1708.

Left:

This Strange NEWS goes on to give a very serious reason for the existence of Crop Circles: Men may dally with Heaven, and criticize on Hell, as Wittily as they please, but that there are really such places, the wise Dispensations of Almighty Providence does not cease continually to evince. For if by those accumulated circumstances which generally induce us to the belief of anything beyond our senses, we may reasonably gather that there are certainly such things as DEVILS, we must necessarily conclude that these Devils have a Hell; and as there is a Hell, there must be a Heaven, and consequently a GOD; and so all the Duties of Christians Religion as indispensable subsequents necessarily follow.

littered with burial mounds, many also circular. Silbury Hill is the largest man-made earthwork in Neolithic Europe. Considering the grandeur and sheer number of these ancient circular constructions, the question has to be asked: did the Neolithic farmers see crop circles being formed 5000 years ago, and build the temples to reflect the power that they held in awe? Many of the large single circles are close in size to Stonehenge.

What To Look for in Crop Circles

Crop circles of the last twenty-five years



Above:
The first crop circle to gain national attention appeared at Cheesefoot Head, Hampshire 1981.

The first crop circles to attract the attention of the media were the three circles found in The Punch Bowl, Cheesefoot Head, Hampshire, during late July, 1981. The centre circle measured 17 metres across, with the smaller ones measuring 8 metres each. Researchers had been studying singletons as early as the late 1970s, but with little interest from the press. Even after the Cheesefoot Head circles were found, there were still few reports up until the mid-1980s. These early circles were still mainly singletons, although it didn't take long for doubles, triples and quintuplets to show up in fairly rapid succession. In 1988, a little over 100 circles were reported. In 1989 300 were seen. And the numbers continued to grow every year.

The lack of physical evidence has always been frustrating for researchers studying the Loch Ness monster, Bigfoot and UFOs. Quite the opposite occurs when investigating crop circles. The evidence is there, in stunning and beautiful form, for all to see.

Crop circles are known for their crisp, sharp edges, unusual design and flattened plants. Often an agriglyph will be found in the middle of a field, with no visible trails leading into it. They are almost always within the selected field, rather than found across field boundaries.

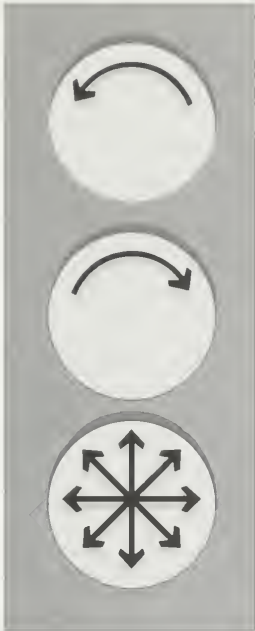
Entering a circle – for even the most intricate new glyphs retain some circular features – is like opening a wonderful present. The circle wall will be clearly demarked from the rest of the crop, with little overspray of flattened stems into the surrounding area. The plant stems will be flattened very hard to the ground, which is itself often almost cement-like. Although the plants in the circle are now lying horizontal, they will still be growing without any apparent harm. Sometimes a swirled centre, rising like a little tepee, can also be seen. Often, it is hard to see what form the glyph has taken, since they are best viewed from the air. All that can be seen are circles and lines of various sizes running off in every direction.

People entering crop circles experience a variety of physical and mental effects. Depending on the formation and on the individual, these can range from feelings of elation, psychic ability and peacefulness to nausea, disorientation and panic. A number of causes have been put forward to account for these effects, including earth magnetism, energy lines, pesticides and orgone energy amplified by a radioactive field. So, a word of warning (especially if you neglect to ask the farmer's permission before entering the field): Enter at your own risk!



Stonehenge Julia Set
First reported on 7 July 1996, this impressive formation apparently appeared within the space of half-an-hour or so, in broad daylight, right next to one of the most visited sites in the world – Stonehenge. Measuring 900 by 500 feet, with 151 circles, the glyph was visited by thousands of people. The farmer wisely chose to charge an admission into the field, and recouped the cost of his damaged field many times over. This intricate glyph was one of two Julia Sets to appear in the summer of 1996, and was linked to fractals, and possibly chaos theory (or even the new vogue of chaos magic). Stonehenge is one of a number of places that attract crop circles over and over again through the years, along with Silbury Hill, the Punch Bowl at Cheesefoot Head and East Field at Allon Barnes, to name a few. However, Stonehenge appears to be one of the pivotal points in the world of crop circles, with a majority of the formations occurring within a forty-mile radius of the World Heritage site.

Floor Patterns



Above:

The direction of the flow of the stems – counter clockwise, clockwise and radiating from the centre.

Below:

Summer 1983 Cheesefoot Head, Hants.



An important facet of circles is their floor pattern. There, the flattened plants are usually swirled, clockwise or anti-clockwise, in an S-shape, and sometimes spread out from the centre radially. Although the pattern is swirled, the actual stems are straight. The very centre of a circle is usually the only place where the stems will actually be bent or curved.

To further complicate matters, the circle floors often feature whorls, where the plants are twisted together like loose rope. These whorls always follow the direction of the swirl, so if the 'lay' (the floor pattern) of the circle is clockwise, the twisting will also be clockwise. Upon careful examination, some floors show multiple layers, with the separate layers swirled in different directions. At other times, a floor, with one swirl type, will even exhibit a channel of stems running through it in a different direction.

However, these attempts to classify the basic components of crop circles are not written in stone. In the past, every attempt to pin down aspects of circle-making invariably met with a contradiction. For instance, it was once held that the outer ring of a circle would flow opposite to the lay of the circle itself, so that a clockwise-swirled circle would exhibit an anti-clockwise ring. Within a very short time, a ringed circle appeared where both components swirled in the same direction.



The Question of Hoaxing

Many circles have undoubtedly been hoaxed from the very beginning. Early attempts at circle-making resulted in broken stems and dead plants, mud and debris in the circle, a certain 'dead' feel and curiously enough, perfect circles. As reports of circles grew over the years, along with examples of what made circles genuine (see above), the hoaxers became much more expert themselves, and succeeded in pulling the wool over the eyes of the experts on a number of occasions.

The earliest hoaxers (at least the best known) were a pair of elderly gentlemen, both artists. They achieved a certain amount of fame (or notoriety) when they were able to 'prove' that they created the first set of glyphs that were clearly different from the original circles. Beginning in 1991, their (claimed) insectograms were hailed as a profound example of alien intelligence or cosmic consciousness, definitely genuine, by many. The pair admitted much later that the whole thing started out as a joke that got out of hand. Hoping to get caught, they allegedly even incorporated their initials, DD, into many of the insect-like shapes. The crops were flattened using a plank held with a piece of rope, and later on a garden roller.

Obviously, these two men could not have created many of the agriglyphs that now reach into the thousands. Others have taken up where they left off. They may include witchcraft groups, the military on a dis-information campaign, ordinary people who get hooked on creating land-art and certain groups sincerely seeking to bring about a change in our consciousness. A good percentage (as many as 40-50%, according to one researcher) of glyphs each year are hoaxes, or are claimed to be. Many experts maintain that anyone can claim to have created any formation *after* the event, but no-one has succeeded in providing undeniable proof. And yet, even the hoaxers admit that when they are about their business in the dead of night, they are often witness to unexplainable glowing lights, strange buzzing or humming sounds and other anomalous events. Someone or something is watching.

Left:

This close-up shows the distinctive swirled pattern of the floor of a crop circle. Notice the sharp edge between the floor and the wall of the formation.



Above:

22 July 1996 Avebury, Wiltshire – possible hoax.

Below:

Summer of 1991, Insectogram, Stonehenge, Wiltshire – possible hoax.



Left:

A competition was held to see if people could create convincing crop circles. Here, a member of Adrian Dexter's winning team puts the final touches on their formation.

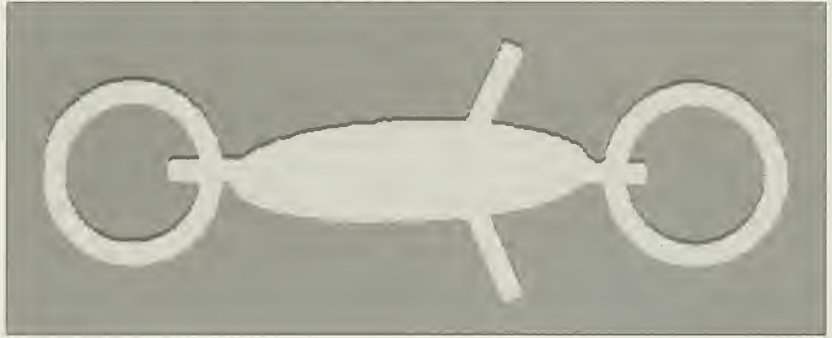


The Barbury Triangle: The glyph at Barbury Castle featured a triangle (or possibly a representation of a pyramid) with sides measuring about 60 yards, on top of which was a massive double-ringed circle. Situated at the points of the triangle were three circles, almost 30 yards across, and each with a different design. This formation was quite obviously meant to be viewed as a symbol. Precisely because of its intelligent design, and a few broken stems, some felt this was a hoax. Its three circles within a triangle evoke echoes of the power of three, the Triune, held in much respect by religion and especially practitioners of the arts of alchemy and sacred geometry. Indeed, it is strikingly similar to an illustration in a seventeenth century book on the Qabala (an ancient mystical belief), where it represents the Tree of Life, or the cosmic egg, in the process of creation. The glyph was situated in a place of power, and certain events that occurred close to the time of its creation, like a loud roaring noise and strange lights in the sky, lent it an air of majesty.

The Modern Development of Crop Circles



Above:
26 July 1994 Roundway,
near Devizes, Wiltshire.



Above:
30 July 1991 Lockeridge,
Wiltshire. Porpoise or
dolphin.

Right:
23 July 1995,
Winterbourne Bassett,
Hampshire.

Looking back over the last ten years or so, it is interesting to see how the crop circles have changed and evolved. In the early to mid-1980s, the crop circles were just that – circles, with or without other smaller circles, in the crops. Towards the middle to the late 1980s, the circles began to form outside rings, and, with the smaller circles, formed patterns, such as the Celtic cross.

The years 1991 and 1992 were golden times, with over 300 formations a year. In addition, a big change was to occur in the way we would view the circles, for now they were unmistakable designs, in the form of outerspace-type insects that incorporated circles, arcs and straight lines. Other designs that appeared included a number of fish or porpoises, then representations of astronomical events. The Asteroid Belt (see page 16) and the Earth Missing formations are examples of these. These agriglyphs were unquestionably made by some type of intelligence – whether human or non-human has yet to be conclusively proven.

In 1991, the glyphs became obvious symbols. On 17 July 1991, one of the most spectacular pictograms ever seen appeared in a field of wheat below the ancient hillfort of Barbury Castle near Swindon, supposed by some to be the site of King Arthur's greatest victory (Mount Badon).

Could the Barbury Triangle have been an attempt to revive mystery and religion, or did it have something to do with numbers and ratios – a trait in common with the second important pictogram of 1991, the Ickfield Mandlebrot?



Page 12:
The engraving from the book *Cabala, Speculum Altis et Naturae* in *Alchymia* published in 1654, bears an uncanny resemblance to the Barbury glyph.

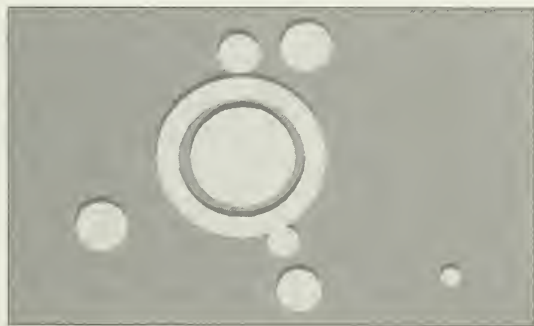
The Barbury Triangle



The Mandelbrot, an important crop formation, was found on 12 August 1991, in the village of Ickleton, near Cambridge, suspiciously close to a certain hallowed hall of learning. A Mandelbrot Set is perhaps the most complex mathematical object, creating infinite dimensions. The Ickleton formation was a very close, but not perfect, representation, because it didn't have the 'solar flares' associated with the real thing. In addition, to be a true Mandelbrot, each of the small outer circles should have looked like a copy of the original – baby Mandelbrots. It did have the cardioid shape, and its slightly unequal sides gave it a feeling of authenticity (genuine agriglyphs are almost always slightly lopsided, as if the template used to scribe the formations is forced to perform the feat from the air, but at a slight angle).

As the Mandelbrot Set is involved with chaos theory, could the makers of this formation be asking us to consider the fine line between chaos and order, the 'just about right' spot we as humans, inhabit? Perhaps it is a warning that if we continue our destructive ways, we could cross the line into chaos again.

Circles of all types were still found, along with the usual bugs, dolphins and arcane symbols. A brief look at the patterns through the years shows an unmistakable cycle. The shapes begin as simple circles, then multiply to doubles, triples and more. Next, rings start to surround the circles. Around 1990, space bugs begin to appear on the land, as well as lengthy hieroglyphics. Since then, each year has brought a new design element into the picture, while the circles, in their many variations, continue. The apparent themes in more recent years include planets and the solar system (a possible warning of things to come, such as the Hale-Bopp comet?) and mathematical models, from the Mandelbrot to the 1996 triple Julia Set on Windmill Hill, the most impressive formation to date.



Left:
1 June 1996, Devizes.
First formation sighted in
Wiltshire that year.

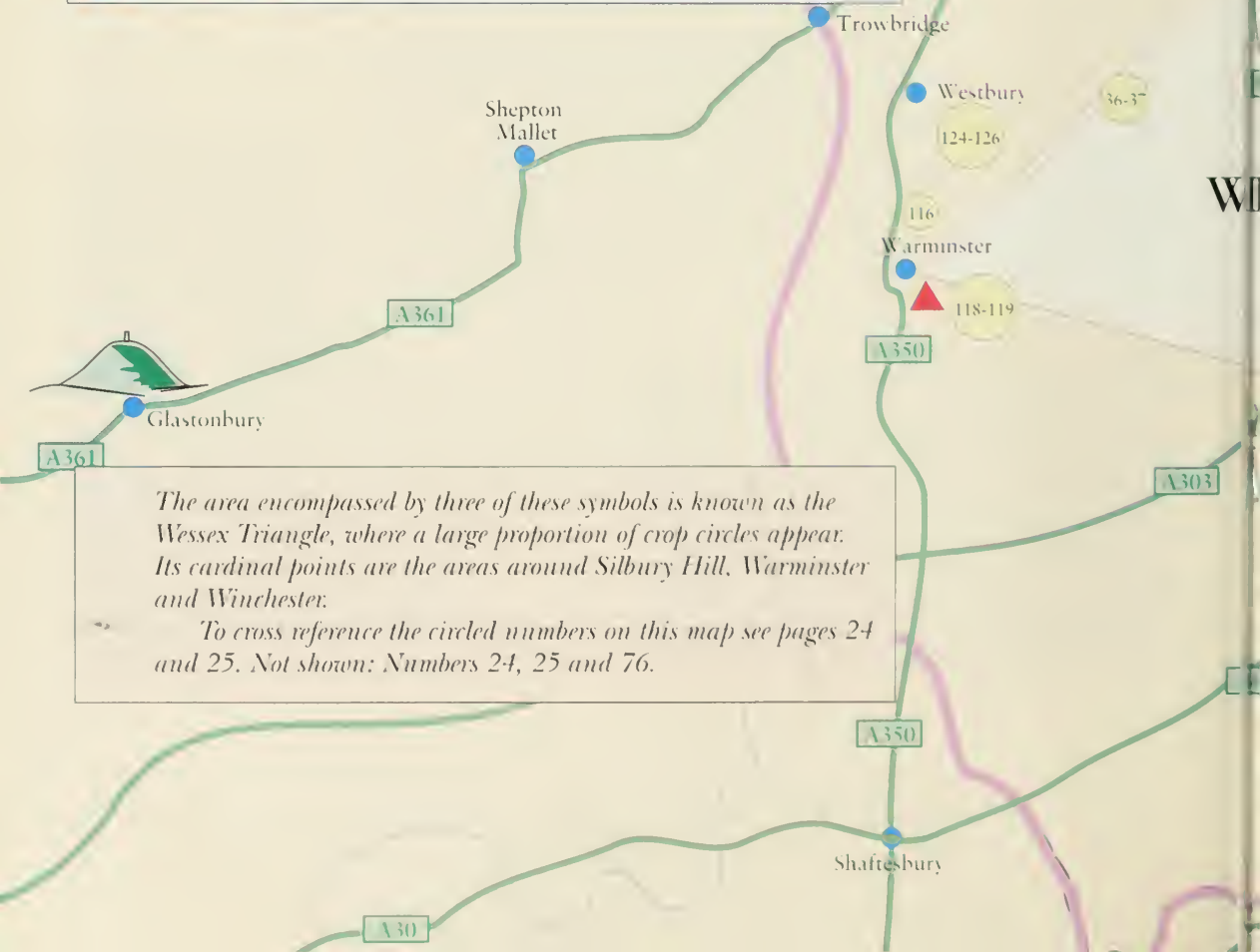
The Ickfield Mandelbrot



Above:
12 August 1991,
Ickfield, Cambridgeshire.
The Ickfield Mandelbrot.

Below:
14 June 1991, Avebury,
Wiltshire.





The area encompassed by three of these symbols is known as the Wessex Triangle, where a large proportion of crop circles appear. Its cardinal points are the areas around Silbury Hill, Warminster and Winchester.

To cross reference the circled numbers on this map see pages 24 and 25. Not shown: Numbers 24, 25 and 76.

BERKSHIRE

WILTSHIRE

HAMPSHIRE



Swindon

A419

A4361

A345

Avebury

Silbury Hill

A345

Froxfield

Hungerford

Newbury

A4

A361

A346

17-23

133

Devizes

121

360

WILTSHIRE



Stonehenge

A342

A345

A338

A342

Andover

A303

1-4

131

80-83

72

27-28

HAMPSHIRE

Wilton

A345

A338

A30

111

A272

Salisbury

101

Winchester



Cheesefoot Head

132

50-52

55-57

87

88

115

38-46

**The Windmill
Hill Triple Julia
Set**

This pictogram, one of the last of 1996, was unanimously felt to be the absolute pinnacle of the crop circle pantheon. First reported on 29 July on Windmill Hill, near Yatesbury in Wiltshire. In keeping with the glyph's apparent love of ancient sites, this area is known to have been one of the first to be inhabited by the remote ancestors of today's Britons. The Windmill Hill culture was in place before the Celts and their priests, the Druids, ever set foot on these shores. Is it just a coincidence that the most modern and impressive formation was found on the oldest site?

This formation, a three-armed spiral of 194 circles, was truly awe-inspiring. It almost appears to have been frozen in mid-turn.



This design, at about 1000 feet, was also one of the largest ever recorded, and is obviously a progression of the fractal-based Stonehenge Julia set. In keeping with its grand design, the centres of the circles utilize every type of centre yet encountered – nests, fans, standing crop, and so on.

Biological causes have also been suggested as the cause of crop circles. Many point to the well-known fairy rings as examples. However, there are no known fungi that can create the intricate patterns seen in recent pictograms. Lightning strikes and whirlwinds are other contenders, but both cause great destruction, hardly the case in pictograms with their well-defined edges.

Biological causes of crop circles





UFOs

Above:

An artist's impression of Unidentified Flying Objects. The Wessex area seems to act as a magnet for UFO activity. There have also been many reports of strange aerial phenomenon near crop circle sites, which has led many to believe that there is a connection between the two.

In many eye-witness accounts, unidentified flying objects have been seen either before, during or after a crop circle has been formed. These UFOs can appear in many shapes, including small lights, cylinders, large balls and even Ferris wheels. Sounds, such as crackling, hissing, trilling or electronic noise may or may not accompany sightings. Often the UFOs have been seen to touch the ground softly, rise and float away, to reveal a crop circle the next day. Others have seen glowing balls or coloured cylinders emit an arced beam from their position in the sky to the ground, near to where crop circles have later been found.

Certainly, UFOs have favoured the Wessex Triangle in the recent past. A major UFO flap occurred around the Warminster area during the 1970s, attracting international attention. As a matter of fact, the town has recently named itself UFO Capital of Europe! Curiously, the phenomenon died down in the late 1970s and crop circles began appearing in the surrounding fields a few

Strange lights in the sky have been known in England for centuries.

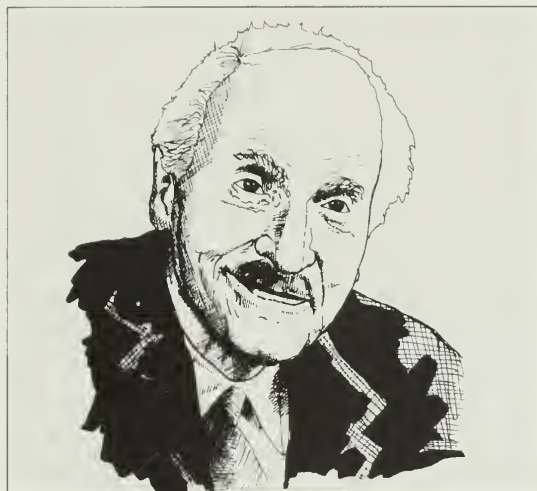
On 8 December 1733, a certain Mr Cracker of Fleet, Dorset saw *Something in the sky which appeared in the north, but vanished from my sight, as it was intercepted by trees ...*

On a sudden it re-appeared, darting in and out of my sight with an amazing coruscation.

The colour of this phenomenon was like burnished, or new washed silver. It shot with speed like a star falling in the night. But it had a body much larger and a train longer than any shooting star I have seen.

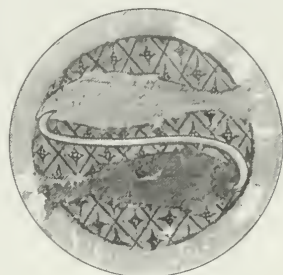
Right:

The eminent psychologist Carl Jung believed that sightings of UFOs would increase as we approached the new millennium.



Above:

Aquarius – independent, original and creative.



Above:

Pisces – intuitive, but vague and prone to worry.

years later. The eminent psychologist Carl Jung (a contemporary of Sigmund Freud) wrote that these anomalous lights in the sky were harbingers of great changes in the collective psyche, due to occur with the passing of the Age of Pisces into the Age of Aquarius. For many years, Earth has been under the sign of Pisces, with its emphasis on worry, and a tendency to avoid conflict and effort. Now we are entering Aquarius with its characteristics of compassion and love of beauty. He further explained that the UFOs were actively involved in bringing about the changes. If this is true, the UFOs are probably using a previously unknown weather condition along with electromagnetic or microwave energy to scribe the pictograms. Perhaps the increasing intricacy of the glyphs are an attempt by unidentified foreign life-forms at communication with us.

The crop circles (or their makers) have been shown to be responsive to thought patterns. Certain researchers, who have wished (silently) to see a particular type of formation, have had it appear the next time they were looking. The circles can link into our subconscious impulses and thoughts. Indeed, those who study crop circles run the same risk as paranormal researchers do – that whatever is controlling them is also able to enter the subconscious mind of the researcher, changing his or her view of the world, of reality itself. This has profoundly affected some, even to the point of madness. In addition, the incredible power associated with UFOs sometimes dogs the researcher, causing a number of strange events to occur in his or her presence.



Alton Barnes Double Helix

Above:

17 June 1996. Alton Barnes, Wiltshire. Also known as the DNA formation.

Earth Energies

This design, first reported 17 June 1996, in the much-visited East Field, seems to represent the double helix of a strand of DNA. Nearly 650 feet long, and consisting of 89 circles, it also encompasses the spiritual energy of the area with its ends pointing to the ancient sites of Adam's Grave and Woodborough Hill.

This pictogram could have something to do with the theory that humankind need to raise their vibrations by making subtle changes in their DNA structure, in order to survive the coming new age. In addition, some studies have shown that the DNA structure in plants found inside crop circles was radically altered. It has also been shown that on some farms, at least, fields containing crop circles resulted in a higher yield than those without.

However, there is also the chance that this formation could be a fractal or resonance pattern.

There is beginning to be a greater acceptance of the theory that a giant grid of energy encloses the earth. This energy is unseen, but detectable by dowsing, with bent rods or pendulums.

Dowsing is an ancient art, and its results can vary from person to person. The dowser holds a pair of rods, made of branches, bent wire, crystal pendulums or even pieces of the crop itself, and walking slowly, waits for the rods to start turning, indicating that a field of energy has been crossed. Some say that a force acts upon

the rods, others insist that the energy affects the dowser, causing minute muscular twitches that can be felt and interpreted. This energy runs everywhere throughout the earth. Some types of energy, however, run in more or less straight courses.

These energy lines, or leys, as they are known, can be most easily seen by looking at maps, and drawing a line through the tumuli, burial mounds, churches and other features of the landscape in a connect-the-dots fashion. Along these lines there are certain points, or nodes, of exceptional power or energy. These were revered by our ancestors, who built the great temples of Stonehenge, Avebury and Silbury on them, along with countless burial mounds and other tumuli. The leys seem to act as a magnet or beacon for UFOs, as many have been observed near ley lines. The same can be said for crop circles, which seem to form close to these bands of energy. One belief holds that crop circles are imprints of an energy beam as it strikes the earth, looking like a slice taken from the main beam, which is perceived by us as a formation on the ground.

Below:

Lines of energy that run close to the surface of the earth are said to be detectable by dowsing with bent rods. Tom Goodman attempts to dowse the energy pattern of the Windmill Hill formation.



Some Important Crop Circles

1. August 1991, Andover, Hants. A number of circles.
2. 1 September 1994. Andover, Hants. The Andover Grid.
3. 15 June 1996. Andover, Hants. The Rose.
4. 18 June, 1995. Andover, Hants. Double-ringer w' sound symbol.
5. 1990. Alton Barnes, Wilts. Long pictogram w' fork.
6. 2 July 1991. Alton Barnes, Wilts. Circles connected by path.
7. 18 July 1991. Alton Barnes, Wilts. Pictogram w' fork.
8. July 1992. Alton Barnes, Wilts. The Snail.
9. August 1992. Alton Barnes, Wilts. Crescent.
10. 17 June 1996. Alton Barnes, Wilts. DNA formation.
11. 18 July 1996. Alton Barnes, Wilts. Dumbbell w. forks.
12. 22 August 1991. Alton Priors, Wilts. Whale.
13. 1991. Alton Priors, Wilts. Long pictogram w' fork.
14. July 1992. Alton Priors, Wilts. Circles w/pathways.
15. July 1992. Alton Priors, Wilts. Forked circles.
16. Summer 1996. Ashbury, Wilts. Vesica Pisces.
17. 14 June 1991. Avebury, Wilts. Humanoid figure.
18. 30 July 1991. Avebury, Wilts. Whale.
19. 1 August 1991. Avebury, Wilts. Whale.
20. July 1992. Avebury, Wilts. Two designs.
21. August 1992. Avebury, Wilts. Ringed circle w' grapeshot.
22. 10 August 1994. Avebury, Wilts. The Spiderweb.
23. 22 July 1996. Avebury, Wilts. Alien face.
24. 20 May 1995. Avon. Dumbbell with ring.
25. 25 July, 1996. Banbury, Oxon. Simple circle.
26. 16 July 1991. Barbury Castle, near Swindon, Wilts.
27. 2 June 1996. Basingstoke, Hants. Ring and crescent.
28. 7 July 1996. Basingstoke, Hants. Glyph of Polynesian design.
29. August 1987. Beckhampton, Wilts. Ten circles within a month.
30. 1 August 1991. Beckhampton, Wilts. Whale.
31. July 1992. Beckhampton, Wilts. Circle and fork.
32. July 1992. Beckhampton, Wilts. Three circles.
33. 1990. Bishop's Canning, Wilts. Celtic cross with rings.
34. 15 July 1994. Bishop's Canning, Wilts. The Scorpion.
35. June 1995. Bishop's Sutton, Hants. The Asteroid Belt.
36. 8 August 1987. Bratton, Wilts. First double-ringed circle.
37. 22 August 1987. Bratton, Wilts. Thirteen circles.
38. Summer, 1983. Cheesefoot Head, Hants. Five circles.
39. 14 August 1986. Cheesefoot Head, Hants. Ringed circle.
40. 9 July, 1987. Cheesefoot Head, Hants. Ringed circle.
41. 25 July 1987. Cheesefoot Head, Hants. Five circles.
42. 4 June 1988. Cheesefoot Head, Hants. Three circles in triangle.
43. 25 June 1988. Cheesefoot Head, Hants. Double-ringed circle.
44. August 1991. Cheesefoot Head, Hants. Flower petal.
45. 1991. Cheesefoot Head, Hants. Insectogram.
46. 1991. Cheesefoot Head, Hants. Snail.
47. 21 June 1996. Cherhill, Wilts. Simple circle.
48. July 1992. Chilbolton, Hants. Sound symbol.
49. June 1992. Chilbolton, Hants. Circle and arrow.
50. 7 June 1991. Chilcomb Down, Hants. Insectogram.
51. August 1991. Chilcomb Down, Hants. Curly insectogram.
52. 1991. Chilcomb Down, Hants. Flower petal.
53. July 1992 Chute Causeway, Wilts. Circle w' curly tails.
54. 1991. Clatford, Wilts. Humanoid figure.
55. Summer 1984. Corhampton, Hants. Two circles.
56. 1 June 1987. Corhampton, Hants. Circle near Roman settlement.
57. 8 June 1988. Corhampton, Hants. Three circles in triangle.
58. June 1995. Danebury Hillfort, Hants. The Cog-Wheel.
59. 11 August 1996. Devizes, Wilts. The Snowflake.
60. 1990. East Kennett, Wilts. Long pictogram w' fork.
61. 29 June 1991. East Kennett, Wilts. Dumbbell w' one halo.
62. 30 July 1996. Etchilhampton, Wilts. 13 circles over three-quarters of a mile.
63. August 1991. Froxfield, Wilts. Whale.
64. August 1991. Froxfield, Wilts. The Brain, or The Serpent.
65. 1991. Froxfield, Wilts. Dumbbell w' halos.
66. July 1992. Froxfield, Wilts. Human stick figure.
67. August 1992. Froxfield, Wilts. Forked design.
68. 8 August 1991. Froxfield, Wilts. The Froxfield Galaxy.
69. Summer 1985. Gander Down, Hants. Celtic cross.
70. 3 August 1985. Goodworth Clatford, Hants. Celtic cross.
71. 9 July 1991. Hackpen Hill, Wilts. Dumbbell w' halos.

-
72. August 1991. Hampshire. Curly glyph.
73. Summer 1978. Headbourne Worthy, Hants. Large circle.
74. 1 August 1986. Headbourne Worthy, Hants. Single circle.
75. 1991. Hungerford, Berks. Whale.
76. 12 August 1991. Ickleton, Cambs. The Mandlebrot.
77. 13 June 1987. Kimpton, Hants. Single ring.
78. July 1995. Kingsclere, Hants. Star, or petal.
80. Summer, 1981. Litchfield, Hants. Single circle near tumuli.
81. Summer, 1982. Litchfield, Hants. Two circles.
82. June 1991. Litchfield, Hants. Insectogram.
83. 6 July 1995. Litchfield, Hants. Many-ringed circles.
84. Summer 1996. Liddington Castle, Wiltshire. Integration Vesica Pisces.
85. 30 July 1991. Lockeridge, Wilts. Porpoise or whale.
86. June 1992. Lockeridge, Wilts. Two circles w/tail and ribbon.
87. 22 August 1986. Longwood Estate, Hants. Celtic cross.
88. 1990. Longwood Estate, Hants. Sound symbol.
89. August 1991. Marlborough, Wilts. Humanoid figure.
90. 1990. Milk Hill, Wilts. Long pictogram w/fork.
91. 23 July 1991. Milk Hill, Wilts. Circle w/line and grapeshot.
92. July 1992. Milk Hill, Wilts. Ringed crescent.
93. 7 May 1994. Morgan's Hill, Wilts. Ring w/crescents.
94. 4 July 1996. Newbury, Berks. Celtic cross.
95. 10 July 1996. Newbury, Berks. Simple circle.
96. July 1992. Oliver's Castle, Devizes, Wilts. Triangle.
97. July 1995. Pickled Hill, Wilts. Circles with arrows.
98. July 1992 Roundway, Wilts. Triangle
99. 26 July 1994. Roundway, Wilts. Circle inside four rings.
100. 20 July 1996. Roundway, Wilts. Three circles w/tumuli.
101. 1991. Salisbury, Wilts.
102. June 1992. Savernake Forest, Wilts. Dumbbell.
103. July 1992. Stanton St. Bernard, Wilts. Snail.
104. July 1988. Silbury Hill, Wilts. 15 circles in two days.
105. 27 July 1991. Silbury Hill, Wilts. Circles and pathways.
106. 3 August 1991. Silbury Hill, Wilts. Whale.
107. June 1992. Silbury Hill, Wilts. Ringed circle w/arrow.
108. August 1992. Silbury Hill, Wilts. The Charm Bracelet.
109. June 1995. Silbury Hill, Wilts. Yin-yang symbol.
110. 1 June 1996. Silbury Hill, Wilts. Flower petal.
111. July 1995. Stockbridge, Hants. Circle w/ratchet.
112. July 1991. Stonehenge, Wilts. Insectogram.
113. July 1991. Stonehenge, Wilts. The Curly Man.
114. 7 July 1996. Stonehenge, Wilts. Julia Set.
115. 1991. Upham, Hants. Insectogram.
116. 21 July 1991. Upton Scudamore, Wilts. Pitchfork.
117. May 1992 Urchfont, Wilts. Four circles.
118. July 1992 Warminster, Wilts. Circle w/series of lines.
119. July 1992 Warminster, Wilts. Fork.
120. 13 July 1996. West Kennett, Wilts. Ringed crescent w/rays.
121. July 1995. West Lavington, Wilts. Intersecting rings.
122. 8 May 1995. West Overton Hill, Wilts. Two circles w/spiral design.
123. 22 July 1994. West Stowell, Wilts. The Galaxy.
124. 4 August 1987. Westbury, Wilts. Two circles.
125. 6 August 1987. Westbury, Wilts. 15 circles in 24 hours.
126. 15 August 1987. Westbury, Wilts. Circle formed on top of previous one.
127. August 1992 Winchester, Hants. Ringed crescent.
128. 19 June 1995. Winchester, Hants. 'Om' symbol.
129. 2 July, 1995. Winchester, Hants. Double-ringer.
130. 26 July 1996. Winchester, Hants. Three intersecting circles.
131. July 1992 Whitchurch, Hants. Circle and satellite.
132. 1 June 1987. Whiteparish, Wilts. Ringed circle.
133. 29 July 1996. Windmill Hill, Wilts. Triple Julia Set. 194 circles.
134. 21 August 1987. Winterbourne Stoke, Wilts. Ringed circle and satellites.
135. July 1992 Woodborough Hill, Wilts. A circle and a ring.
136. July 1992 Woodborough Hill, Wilts. Circle w/grapeshot.
137. June 1992. Wroughton, Wilts. Three circles and ribbon.

The above list is of some of the important crop circles to appear in Wessex from 1983 until 1996, arranged alphabetically by location. See Map on centre pages for geographical position.

More Theories and Beliefs

Ancient symbols

Another idea is that many of the circles are ancient symbols that are peculiar to humans. Perhaps they have been dormant, unseen, until our time of need – like King Arthur. In fact, some Native Americans and other tribal groups have announced that because of the coming new millennium, and the great changes it will bring, mankind will be re-awakened to ancient symbols in order to raise our vibrations, even change our DNA. Crop circles and pictograms, as symbols, strike a resonance in us, as can be seen in the many circular mandalas, and even the cup and ring marks on ancient Celtic artwork. Circles are also highly revered by native groups, who view crop circles as medicine wheels.

Neo-pagans

Neo-pagans could also be involved, carrying out age-old fertility rites in the corn fields. Some of the people who claim to be making crop circles feel that they are part of something bigger than themselves, and believe that they are under the influence of extraterrestrials or even nature spirits, such as devas.

Or practitioners of magic, whether for good or evil, could be scribing the pictograms to force a dramatic change in the way our complacent modern society views the world. This would help to explain why so many occur in the Wessex area, favourite haunt of covens for hundreds of years.

The Earth itself

The Earth itself may be causing the circles. The Gaia theory holds that the earth is a living, breathing organism. The crop circles are the outward signs of where healing energy is being intelligently sent. The crop formations could also be a by-product of energy being given off as the earth tries to heal itself. They might also be likened to sore spots, or welts, that can occur on a diseased organism. In any case, they are an attempt by Gaia to warn us that our destructive, polluting ways cannot be tolerated much longer before something drastic has to be done.

The Military

The Military is often blamed for crop circles, because they seem to take such a great interest in it, and yet maintain an official silence on the subject. Conspiracy buffs suggest that the military is using an advanced laser or microwave beam from a satellite to draw these designs, both to test out the new weapon, and to monitor the public's reaction to extra-ordinary stimuli (with the hopes that if we accept crop circles, then before long the government will be able to tell us of their long-standing dealings with extraterrestrials). In any case, UFOs do seem to occur close to military bases, and military helicopters are sometimes seen soon after the arrival of a new crop circle. They have even harassed and chased researchers.

Opposite:

Crop circles are frequently seen near ancient monuments. Here the hill carving of a white horse is seen towering over a formation in Cherhill, Wiltshire, seen in 1992.

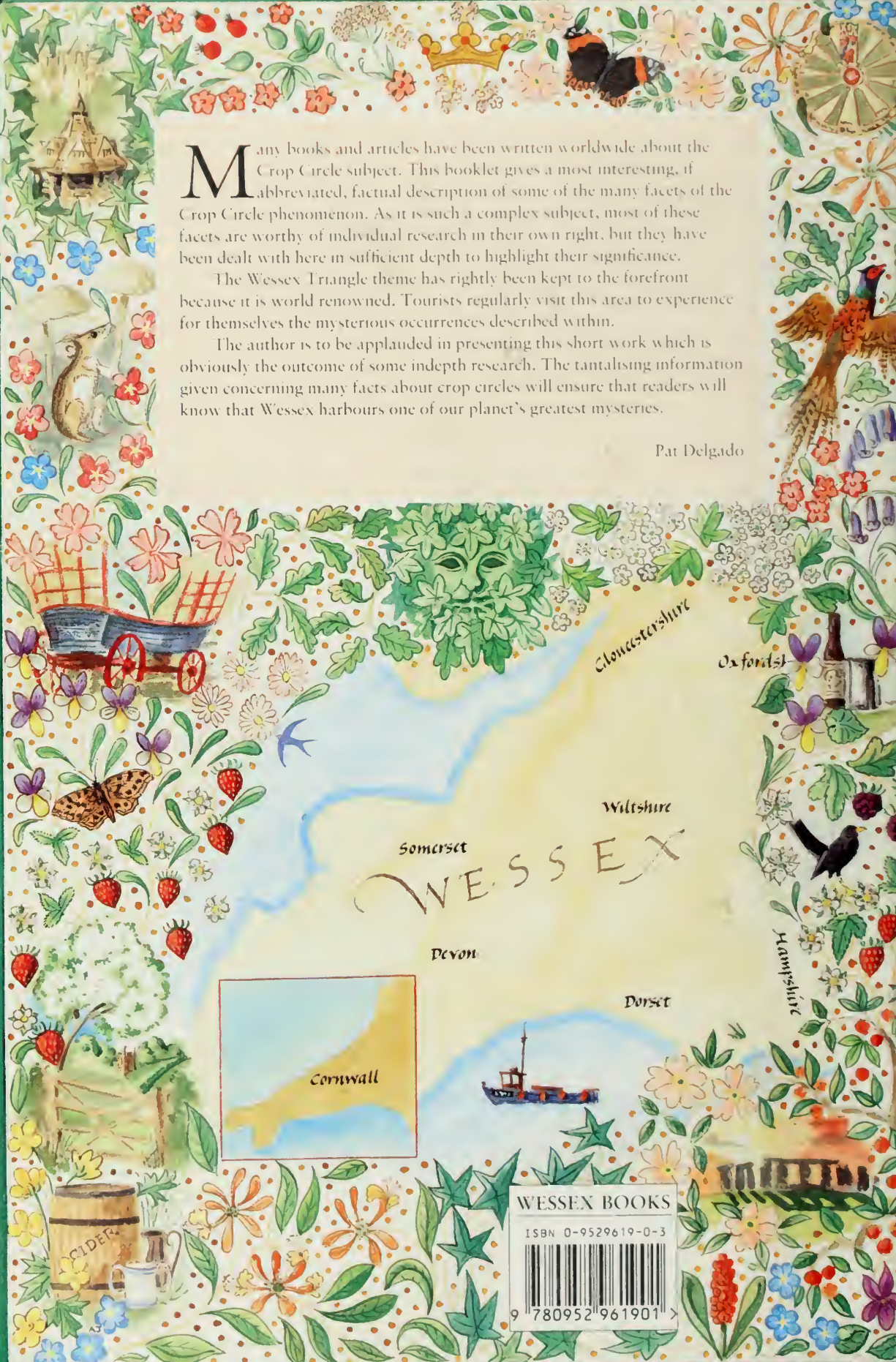


Many books and articles have been written worldwide about the Crop Circle subject. This booklet gives a most interesting, if abbreviated, factual description of some of the many facets of the Crop Circle phenomenon. As it is such a complex subject, most of these facets are worthy of individual research in their own right, but they have been dealt with here in sufficient depth to highlight their significance.

The Wessex Triangle theme has rightly been kept to the forefront because it is world renowned. Tourists regularly visit this area to experience for themselves the mysterious occurrences described within.

The author is to be applauded in presenting this short work which is obviously the outcome of some indepth research. The tantalising information given concerning many facts about crop circles will ensure that readers will know that Wessex harbours one of our planet's greatest mysteries.

Pat Delgado



WESSEX BOOKS
ISBN 0-9529619-0-3
9 780952 961901