

# The National Geographic Magazine

AN ILLUSTRATED MONTHLY

Honorary Editor: JOHN HYDE

Honorary Associate Editors

A. W. GREELY

W. J. MCGEE

ELIZA RUHAMAH SCIDMORE

## CONTENTS

	PAGE
THE WITWATERSRAND AND THE REVOLT OF THE UPTLANDERS. With Illustrations.	349
THE ECONOMIC ASPECTS OF SOIL EROSION. II.	368
A CRITICAL PERIOD IN SOUTH AFRICAN HISTORY.	378
PROCEEDINGS OF THE NATIONAL GEOGRAPHIC SOCIETY.	379
MISCELLANEA.	380

WASHINGTON

PUBLISHED BY THE NATIONAL GEOGRAPHIC SOCIETY

AGENTS IN THE UNITED STATES AND CANADA

THE AMERICAN NEWS COMPANY, 20 AND 41 COLUMBIA STREET, NEW YORK  
 (Also Representatives in Various Other Cities)

Price 25 Cents

\$2.50 a Year

THE  
National Geographic Society

ORGANIZED, JANUARY, 1888

---

PRESIDENT

GARDINER G. HUBBARD

VICE-PRESIDENTS

MARCUS BAKER

WILLIAM H. DALL

G. E. GILBERT

A. W. GREELY

C. HART MERRIAM

HERBERT G. OGDEN

TREASURER

CHARLES J. BELL

RECORDING SECRETARY

EVERETT HAYDEN

CORRESPONDING SECRETARY

HENRY GANNETT

MANAGERS

H. F. BLOUNT

C. W. DABNEY, Jr.

DAVID T. DAY

JOHN HYDE

W. J. MCGEE

F. H. SEWELL

W. R. POWELL

J. B. WIGHT

---

THE NATIONAL GEOGRAPHIC MAGAZINE

Back Numbers wanted by the Society.

For the purpose of making up complete sets of the Magazine, the National Geographic Society is prepared to purchase at reasonable prices the following back numbers:

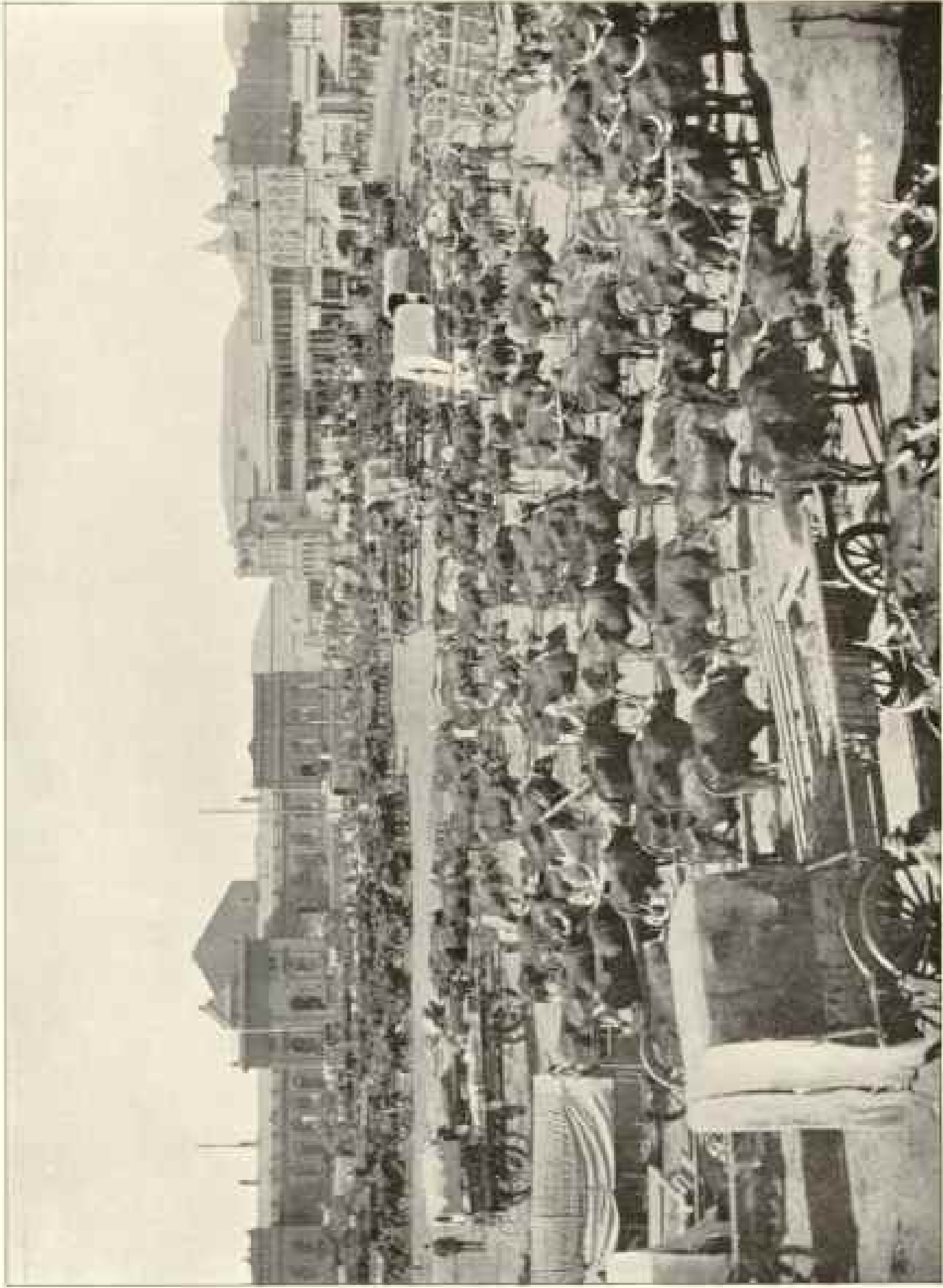
Of Vol. I, 1889, numbers 2 and 4; of Vol. II, 1890, numbers 2 and 3; of Vol. IV, 1892, numbers 1, 3, 4, 5, and 6.

Members of the Society or other persons having spare copies of any of these numbers are invited to sell or present them to the Society, as they may prefer.

Address: EVERETT HAYDEN, *Secretary*,

1517 H STREET, WASHINGTON.





MARKET SQUARE, JOHANNESBURG, SOUTH AFRICA.

THE  
National Geographic Magazine

VOL. VII

NOVEMBER, 1896

No. 11

THE WITWATERSRAND AND THE REVOLT OF THE  
UITLANDERS \*

By GEORGE F. BECKER,

*United States Geological Survey*

The South African Republic, or, as it is more often called, The Transvaal, lies in southeastern Africa, between the Limpopo or Crocodila river on the north and the Vaal river on the south. Portuguese and British possessions shut it off from the Indian ocean on the east, and the country to the north and west of the republic is also British. The Vaal river is tributary to the Orange, which flows into the Atlantic, while the Limpopo empties into the Indian ocean. The watershed between these rivers is the Witwatersrand, or white-water-range, which trends nearly east and west about south latitude 26°, and is therefore only 150 geographical miles from the tropic of Capricorn.

The Transvaal may be roughly described as an elevated plateau, most of which lies between 4,000 and 6,000 feet above sea level. To the north of the Witwatersrand the general level is not much over 4,000 feet. Immediately to the south of this watershed, near Johannesburg, the elevation is about 6,000 feet, gradually diminishing toward the Vaal. The general aspect of the country reminds one of the Laramie plains, but the rainfall averages about 30 inches, and the climate is mild and equable. The soil is only moderately fertile, and 15 years ago the country was considered fit for nothing but pastoral occupation.

The Witwatersrand, in the neighborhood of Johannesburg, consists of upturned edges of a thick mass of quartzites, shales, and conglomerates, known as the Lower Cape formation. These

\* Paper read before the National Geographic Society, October 16, 1896.

rocks are of Paleozoic age, but carry no fossils. The conglomerates of this group almost all contain more or less gold. The most famous mines of the Transvaal are opened upon a certain set of these conglomerate beds known as the Main Reef series. Resting unconformably on the Lower Cape is another group known as the Upper Cape and containing one bed of conglomerate, the Black Reef, which has been profitably worked for gold at some points. An extensive sheet of dolomite forms one member of the Upper Cape. Unconformably on the Upper Cape lies the Triassic, carrying very extensive beds of coal, one of the treasures of the Transvaal of which little is heard outside of South Africa. As the country is also rich in iron ores, one may expect to hear more in the future than in the past of these coal fields. Meantime they supply the gold-mining industry with good and cheap fuel. The Lower Cape formation, with the Main Reef series, is exposed only to a limited extent. Within less than 20 miles of Johannesburg, both to the east and west, the Upper Cape and the Triassic beds flood the country, and for a long distance only an occasional glimpse is to be had of the Lower Cape with its auriferous conglomerate. It is said by various engineers to reappear occasionally for hundreds of miles from Johannesburg—as, for instance, in Zululand—and to be more or less auriferous wherever found. It need hardly be remarked that the search for the Main Reef beneath the Trias is most arduous. That it will eventually be traced far beyond the surface exposures of the district is quite certain.

In this paper the Witwatersrand district alone is of especial interest, but in conveying a general notion of the Transvaal it must be remarked that this is by no means the only auriferous district in the republic. There are four other districts, containing in all ten mines, which yield at the rate of over \$100,000 each annually. Of these the Klerksdorp district carries gold in conglomerates. In the three other districts the gold is found in ordinary veins. The Sheba mine, in the De Kaap district, has yielded over \$5,000,000. Four of the important mines lie in the Lydenburg district, and one, the Sutherland, in the Zoutpansburg district. The total gold product of the Transvaal for 1895, outside of the Witwatersrand, was \$3,581,000, while the Rand alone yielded \$38,110,000.\* Statistics show that the yield of the outside mines is increasing about as rapidly as that of the Rand.

\*For comparison it may be noted that the United States produced in 1895 \$46,610,000 worth of gold, or about \$4,000,000 more than the Transvaal.

The great gold deposits of the Rand are beds of conglomerate, known in South Africa as "banket" or "reef." They crop out for some 27 miles at a distance of from one to two miles from the crest of the Witwatersrand, and usually dip near the surface at an angle of  $45^{\circ}$  or more. When followed downward the dip diminishes somewhat rapidly to  $25^{\circ}$  or less. None of the mines are yet very deep; none in fact reach 2,000 feet, but the reefs have been found by the diamond drill to a depth of 2,500 feet. The structure of the country seems to show that below the 2,000-foot level the reefs will continue for a long distance at a moderate angle. How deep mining can be carried on may be more or less questionable, but the mining engineers on the Rand confidently believe that they can get down 5,000 feet, and I agree with them. The ore of the Rand is phenomenally uniform for an auriferous deposit. While it is locally patchy, considerable areas show only moderate fluctuations from a general average. The quantity of gold can be computed with something like the same confidence that the amount of coal in a coal seam can be calculated. Such a computation is in the nature of things only a first approximation, but within certain limits it has a value. Estimates of this kind for the whole area or portions of it have been made by various experts, among whom may be mentioned Mr Hamilton Smith, Bergrath Schmeisser, of the Prussian mining service, Mr John Hays Hammond, Messrs Hatch and Chalmers, and Professor De Launay, of the Paris School of Mines. These estimates accord fairly well. The latest is Professor De Launay's, who, after a review of the other estimates, calculates by a method of his own that to a depth of 1,000 meters (2,381 feet) and for a length of outcrop of 25 miles the amount of gold accessible is 13 or 14 milliards of francs, or from 2,600 to 2,800 million dollars. This would give down to the 5,000-foot level from 3,962 to 4,267 million dollars. Other of the estimates, similarly treated, would give still larger values. Hatch and Chalmers, on the other hand, estimate that the Rand proper, together with outlying portions of the district (all within about 20 miles of Johannesburg), will yield down to the 5,000-foot level about 3,500 million dollars. I have not been able to find any grounds for regarding this as an overestimate, and I know of no one familiar with the deposits who thinks it exaggerated.

The sketch of the character and resources of the Transvaal just given contains nothing new. It has been outlined in order to indicate how it happens that a community has suddenly sprung



up at Johannesburg, composed of enterprising, highly intelligent, and perhaps somewhat impatient men, hailing from many different lands—men as different as possible from the pastoral pioneers who compose the South African Republic. The Boers and the foreigners, or "Uitlanders," as they are called in Dutch, were not congenial and the great mining camp has all along constituted a menace to the peace of the Republic. As every one now knows, the threatened danger was not averted.

The dramatic incidents which have taken place in the Transvaal during the past ten months have drawn the attention of the whole world to that country. The interest in these events felt in the United States has been little less intense than that in Great Britain. This is entirely natural, for many of the leading men in Johannesburg are Americans; indeed, the mining industry is chiefly under the guidance of American engineers, and the United States was represented on the reform committee by seven members. It really behooves the American public therefore to know how prominent American representatives of an important profession have behaved themselves under trying circumstances. While there is a natural sympathy in the United States for Anglo-Saxons taking up arms for their rights, we, as Republicans, also sympathize with the South African Republic in the endeavor to maintain its independence. This fellow-feeling makes it all the more interesting and important to examine carefully and, if haply such a thing is possible, impartially as well as carefully, into the causes and conduct of the revolt.

I wish this inquiry had fallen into other hands than mine, but I happened to visit the country in April for a stay of some months; several of the condemned men are old friends of mine as well as colleagues, it naturally fell to my part to make such efforts in their behalf as I could, and still in spite of these personal relations it is clear to me that there is much to be said on the Boer side of the questions at issue. So far as opportunities go, therefore, I am perhaps in as good a position as any one can be to review the circumstances without prejudice. The great difficulty in this, as in any inquiry of an historical nature, is to ascertain the facts, for these are differently represented by different though seemingly well-informed persons. I trust it will be found that I have measurably succeeded.

It would be impossible to understand the conditions which led to the grievances of the Uitlanders without considering some



of the influences which have made the Dutch colonists or Boers what they are. The Boers are most closely related to us ethnologically, but their political and industrial history has been so different that jealousies and antagonisms have arisen which, though highly regrettable, are by no means without excuse.

The Boers, like the English, are in the main of Teutonic blood, with a relatively small infusion of French stock. Like the English, they are stubborn, self-reliant, fond of the chase, and admirably adapted to cope with the difficulties incident to colonization in a country occupied by savage beasts and still more savage men. The Boer ideal seems to be life on a large estate, with plenty of sport and the occupation of not too exigent stockbreeding and farming. So far their tastes do not differ greatly from those of many Englishmen, but they are for the most part ignorant of the refinements of life so dear to advanced Anglo-Saxons, and perhaps on this account they are almost devoid of the commercial instincts through which such tastes might be gratified. They are, it is said, usually able to read print, but for the most part their reading is confined to the Bible. They are highly religious, and the Bible appeals to them as to few other peoples, because the scenery and material conditions of the Book are so similar to those by which they are surrounded. The very animals are the same. Their religion is somber and puritanical; it is that of the Old Testament, with little sweetness or mercy in it. Under normal conditions the Boers are generously hospitable and they are brave. It is true that Englishmen have sometimes reviled them as cowardly, but their whole history, and particularly the battles of Boomplaats and Majuba Hill, shows the contrary. The accusation seems to be due in part to the fact that like all continental Europeans they are greatly averse to fisticuffs, and partly to the fact that in fighting with rifles they avail themselves of cover whenever they can. Taking advantage of cover I understand to be a well-established principle of all modern tactics.

Many of them are said to be untruthful, at least in matters of business. This is not strange, for it was long ago observed that financial responsibilities do more than the most stringent religion or than amiability and bravery to foster a high standard of truthfulness. The Boers are sometimes spoken of as a degenerate race, but this is certainly a slander. They usually possess an excellent physique, and it is perfectly well known that one or two generations of education put the Dutch colonist

on a par with men of any nationality. The struggle for existence and for freedom has saved them from mental stagnation. That they are backward as a race, according to our standards, is true. Much of the seventeenth century still clings to them, but they have lost none of the capacity for advance.\* The most important of all the characteristics of the Transvaal Boer is his passion for freedom or, what in his case is tantamount to the same thing, his horror of British domination. In 1880 the women of the Transvaal urged their sons and husbands to arms, bidding them die like patriots, if need were. This passionate horror of English rule is an historical development. The Boers have had little opportunity to observe how mild and beneficent English rule can be under certain circumstances.

Cape Colony passed into the possession of the British Crown by force of arms in 1806, and was formally ceded by the Prince of Orange in 1814. The white population of the Cape at that time consisted of the descendants of Dutch colonists and French Huguenots. The latter had found their way to Africa through Holland after the revocation of the Edict of Nantes in 1685. At no time did the Huguenots exceed one-sixth of the colonists, or, if the Dutch East-India Company's servants are counted, one-eighth of the total European population. The colonists had little intercourse with Europe during the 18th century. Like other colonists of the time, they owned slaves, their lives were pastoral and agricultural, and, except for the Bible, their studies were confined to woodcraft. The petty impositions of the Dutch East India Company had made them unscrupulous so far as transactions with the government were concerned; the incorrigible carelessness of Hottentot servants had weakened the habits of cleanliness which they had brought from Holland, and the possession of slaves had produced its usual deleterious effects.

\* Mr John Nixon, in his *Story of the Transvaal*, 1888, which certainly cannot be accused of partiality to the Dutch colonists, says: "I have the pleasure of numbering many intelligent and educated Boers among my acquaintance, and I desire to put on record my opinion that a 'good' Boer is quite equal to a good Englishman. Nay, in one respect he is better, for he adds to the virtues of an Englishman an unbounded and generous hospitality. . . . The educated Boer is a splendid stock. . . . No one can deny that on that day [Majuba] the Boers fought bravely and well."

The Uitlanders commonly form an extremely unfavorable opinion of the Boer. They do not desire Boer hospitality and they see nothing of his qualities as a pioneer, while in business they find him suspicious, untrustworthy, and behind the age; but it would not be fair to judge of a people like the Boers entirely from a commercial standpoint. The Boer, on the other hand, is not without justification for suspecting English designs on his independence, and he can point to many promises of the British government which have not been fulfilled; but it is not fair to judge a people like the English entirely from a political standpoint.

Thus, except in the resources appropriate to pioneers, they had been left behind in the march of civilization.

The British colonial policy in the early decades of this century had not yet developed into its modern phase of mildness in any part of the world. In 1815 took place a little disturbance which has been designated by the exaggerated name of the "rebellion" of Slachter's Nek.\* Two of the insurgent Boers and one Hottentot British soldier only were killed, yet the British punished the revolt by hanging five men, none of whom had shed a drop of blood, while thirty-two others were condemned to banishment, imprisonment, or fines. This cruel sentence, followed by no commutation, has never been forgotten by the Boers, and small is the wonder. The use of the Dutch language was forbidden in the courts of Cape Colony in 1827, and for a short time those who did not understand English were even disqualified from jury duty. In 1834 the slaves were emancipated suddenly by act of Parliament. The compensation proposed was only one-third of the appraised value, and the conditions of obtaining this fraction were so onerous that the colonists in many cases realized only a fifth or a sixth of the actual value, and sometimes nothing at all. Many families were reduced to want, and great misery was caused by the injudicious execution of a measure the principle of which was laudable. The emancipated negroes were placed on a political equality with their recent masters, and the government refused to pass vagrant laws to control the blacks. This was a period when philanthropists were very enthusiastic on the subject of the universal brotherhood of man, and it was supposed by many well-meaning people that Kaffir tribes were intrinsically on a par with white communities. The Boers knew better. Their refusal to acknowledge the equality of white and black drew down on them the wrath of the missionaries, who were extremely influential both in London and Cape Town. There seems to be no doubt that the Dutch were represented as far more cruel to the natives than they really were, while the blacks were painted as far less barbarous than they are known to have been.† Thus the mutual antagonism of the Boers and the English was fomented by the apostles of peace.

\*The origin of this affair was the refusal of a Boer named Beaulieu to comply with a summons to answer a charge of having ill-treated a colored servant. There seems to have been no politics in it.

†That some terrible cruelties have been perpetrated by the Boers on the blacks during periods of hostility is not to be doubted. It must be remembered that white prisoners taken by the blacks were and are tortured with indignities sickening to hear of and quite indescribable to print.

The various grievances briefly indicated above led to the first great "Trek," or emigration of the Boers, from Cape Colony in 1836-'37. Taking only their herds and such movables as they could load on their wagons, thousands left the country. The emigrants themselves maintained that they left the colony not to avoid law, but lawlessness, and they made it evident that their chief motive was to escape the severe yet inefficient English domination. In a manifesto by one of their principal men, Peter Retief, written in 1837 it is asserted, "We quit this colony under the full assurance that the English government has nothing more to require of us and will allow us to govern ourselves without its interference in the future." Vain hope!

In migrating into the wilderness, the Boers naturally came into contact with the natives, not the negroes of the United States, who came from the West Coast of Africa, nor the Hottentots of the Cape, but the great Bantu or Kaffir race, which includes the Zulus, Matabili, Basutos, etc. These people are of a dark bronze hue, and have good athletic figures. They possess some excellent traits, but are horribly cruel when once they have smelled blood. The Bantus appear to have reached the cape about the same time as the Europeans, killing out Hottentots and Bushmen as they advanced, and waging furious inter-tribal wars. Again and again a Bantu tribe, effectively organized under some able chief, has swept a great region clear of human beings. When their witch-finding ceremonies are considered as supplementing the unsparing slaughter of war, it is remarkable that any considerable number of Bantu remained. Nothing but the phenomenal fecundity of the race has kept up its numbers.

The trekking Boers thus met tribes who held their territories only by the right of recent and bloody conquest and to whom battle was the object of life. If the Boers had small compunction in taking land from them, it is perhaps not to be wondered at. The Boers paid for it, like the Bantus, with blood. The history of the conflicts between the Boers and Zulus is wildly romantic. It has been written and cannot be repeated here.

The greater part of the territory occupied by the South African Republic and by the Orange Free State was absolutely depopulated by the Matabili (or rebel Zulus) under Moselekatse in 1817. Twenty years later this chief and his followers fled to the north of the Limpopo river, as the result of independent defeats by the Zulu subjects of Dingaan and by the Boers.

When they left Cape Colony a portion of the Boers settled in



ZULU BRIDE AND BRIDEGROOM



Natal, after the loss of a great part of their number, treacherously slaughtered by the Zulu chief, Dingaan. The English had repeatedly refused to annex Natal, but after the Boers had been settled there for five years and had set up a republic, the British took possession, and to escape them most of the Boers trekked again to the north of the Orange river, where many of their kinsfolk had preceded them in 1836-'37. Repeated official declarations had been made that the British dominion would not be extended to the northward of this river. Nevertheless, in 1848 British sovereignty was proclaimed over the region between the Orange river on the south and the Vaal on the north, practically the area now occupied by the Orange Free State. The Boers resisted the annexation; two of their number were hanged and the property of other recalcitrants was confiscated. As early as 1842 many Boers had entered the Transvaal. After the annexation of the country to the south, many more crossed the Vaal. In 1852 the population amounted to about 5,000 white families, and the independence of the Transvaal was acknowledged by England in the Sand River Convention.

In 1877 the Transvaal was annexed by England on the plea that the weakness of the state was a menace to English interests.<sup>2</sup> But the unwillingness of the Boers to be British subjects had not diminished, nor were they without grave reasons for dissatisfaction. It is acknowledged by men of all parties that the promises made by the English at the time of the annexation were not kept.<sup>†</sup> Late in 1880 the republican flag was again hoisted; war and the battle of Majuba hill followed, and in 1881 the Transvaal was again acknowledged independent,<sup>‡</sup> though with the reservation of British suzerainty. In 1884 the relation of the two countries was further modified by a convention, which is still in force. In this document the only substantial right reserved to Great Britain is that of ratifying treaties between the republic and foreign powers.

An attempt has been made in the foregoing paragraphs to show the origin of the hostility and distrust with which the Boers regard the English, but it is not to be inferred that the

<sup>2</sup> Proclamation of annexation and address of Sir T. Shepstone. The annexation was nominally provisional. In 1878 Sir Garnet Wlesley announced that it should continue "forever."

<sup>†</sup> Mr Nixon writes: "Nor were any of the other promises which were expressed or implied at the time of the annexation carried out."

<sup>‡</sup> The greater part of the above historical notes are taken from Mr G. McC. Theal's *History of South Africa*, 4 vols. Mr Theal is generally acknowledged to be a trustworthy and impartial historian.



British policy in South Africa has been one of consistent and deliberate oppression. Vacillating it has been, through changes in party government, through ignorance in the colonial office of conditions in South Africa, and through the idiosyncrasies of arbitrary or doctrinaire commissioners. Many of the British governors have lost reputation and have been recalled in consequence of their mistakes, but South Africa has gained little by the penalties meted out to her rulers. In public affairs enlightened wisdom is more useful than virtue; for wrongs, though unintentionally committed, can seldom be righted or even fully atoned for.\*

Gold had been discovered in the Transvaal in the Lydenburg district as early as 1857, and prior to 1881 it had been found at other points as well, but none of these discoveries were of a very sensational character. The marvelous deposits of the Witwatersrand were detected in 1885.

The Witwatersrand as a gold-producing district has no parallel in history. It is now producing from an area no larger than the District of Columbia at the rate of more than \$40,000,000 worth of gold annually, and, as has been mentioned, there are good reasons for believing that the ultimate total production will be approximately \$3,500,000,000, or about ten times the total value of the product of the Comstock lode.† Production did not begin till 1887. Of course, Johannesburg, the chief town of the district, grew with the utmost rapidity.

A census of the district within three miles of Market square was taken in July last. It showed 51,225 whites and 51,849 colored people. Doubtless the enumerators missed some residents, but probably no large proportion of them.

The sudden development of this vast industry naturally produced a profound effect upon the financial circumstances of the Transvaal, although the Burgbers did not take part in the exploitation of gold. The Boers sold land at enormous valuations, furnished transportation at high rates, sold produce at famine prices, and levied most profitable taxes. How greatly they bene-

\*The loyalty of many Englishmen is so extreme that they esteem it a blessing for any people to come under English domination, whether willingly or otherwise. They cannot understand how people can prefer independence to the British rule. This fact explains many instances of aggression which to an American seem without excuse.

†As estimated by the Mint Bureau of the United States, the Comstock produced up to January 1, 1896, about \$140,000,000 worth of gold. If silver is reckoned at the coinage value, or \$1.2929 per fine ounce, the total product of the lode is estimated at \$107,472,628.56. The gold is about 42 per cent of the total value. Last year the production of this great lode fell below a million dollars.

fited by the mining industry from a pecuniary point of view is illustrated by the fact that the public revenue in 1894 was six times that in 1883. The Boers did not foster the foreign community on the Rand, in spite of its beneficial influence upon their finances. On the contrary, they held aloof, and actually threw many obstacles in the way of the progress of the industry. They evidently regarded the immigration as a new and insidious form of British invasion. The independence which they had achieved by remarkable efforts and sacrifices was jeopardized by a peaceful inroad, and they were in danger of losing their freedom by a process of absorption into a larger community growing in their own midst.

That they should resist this new form of conquest by every means available to them was inevitable. Indeed, any other course would have belied their entire history. The most evident means of retaining control of their own destiny was to render the acquirement of the franchise difficult if not impossible, and this perhaps indispensable measure was promptly taken.

So far as I can learn, both the liberal or progressive party and the conservative or Dopper party of the republic are in accord as to the policy of practically denying the franchise to foreigners. On other points they differ. The conservatives, who are represented by the present administration, do not include among their members a sufficient number of educated and professional men to fill the offices rendered needful by the new order of things. They cannot draw largely on the opposition to fill these places, and few of the Cape Boers, being British subjects, are available for the execution of the anti-English policy.\* Hence it is to Holland that President Kruger is almost forced to turn for educated men of Dutch speech to carry out the Dopper program. The railway, too, from Delagoa bay to Johannesburg and other points in the Transvaal is in the hands of the Netherlands Railway Company,† a fact which tends greatly to increase the influence of the Dutch in the Transvaal. It would also seem to be a deliberate plan with the conservative party to offset and minimize English influence as far as possible by that of the Netherlands, from which the republic has nothing to fear.

\* According to Mr. Wassels, in a lecture delivered in 1894, the fear of betrayal to England is frankly stated as a sufficient reason for not appointing Cape Boers to office in the Transvaal.

† The concession for this road was originally conferred under President Burgers in 1873, but the road was only completed so as to connect with the Cape system in 1894. It is said to be the most profitable railway in the world. The republic has the right to take possession of it.

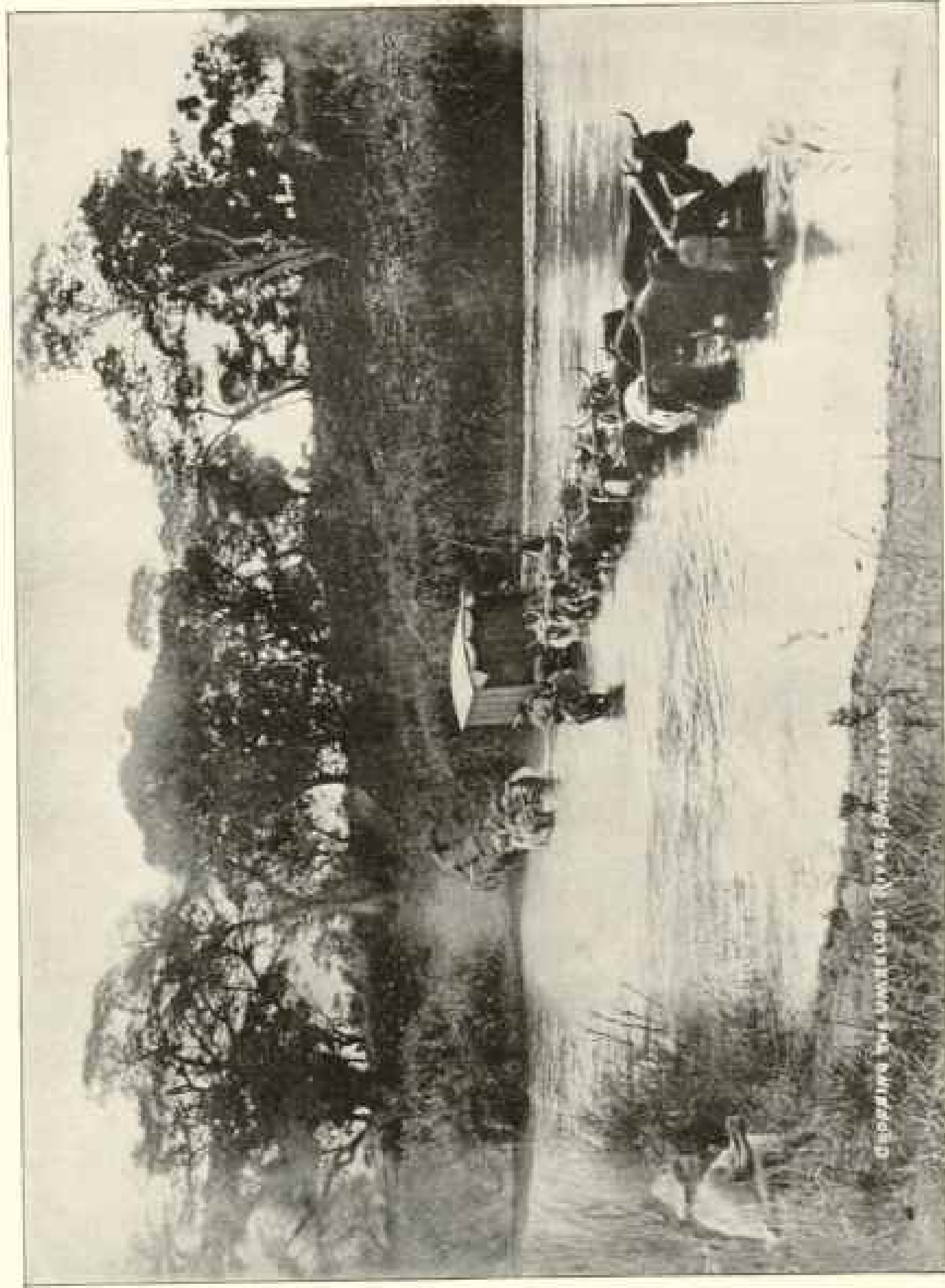
The Dutch, or, as they are called in South Africa, the "Hollanders," are not popular with the progressive party, which could fill many of the offices with its own members. Neither is it the policy of this party to foster the influence of the Netherlands in the republic. The liberal party, as I gather, holds that so long as the control of the country is retained to the Burghers by limiting the franchise, any undue influence of the English can be obviated with little aid from Europe.\* The mining community detests the Hollanders, for it is through them that nearly all the obstructive policy of the government is carried out. It is charged that the Hollander officials are very corrupt, and that some of them are so is certain. It is not, however, to be supposed that all of these members of an honorable nation are bad,† and that many of them are able is beyond question. Dr Leyds has shown himself a statesman of a very high order. Among the assistants he has chosen there must be many intelligent enough to appreciate the expediency of honesty. That bribery exists, however, and that mining companies bribe on a large scale is certain. Bribes are said to be indispensable.

It may be suspected that a large part of the Hollanders are in Africa to make their fortunes, with the intention of returning to Europe when this end is accomplished. If so, they are most undesirable officials or even burghers. No man of ordinary virtue who does not identify himself with the country in which he lives, to whom that country is not "home," will use official power or the franchise consistently for the best interests of a community from which he longs to be gone.

The Uitlanders of the Rand were, and are, extremely discontented under the Dopper policy of exclusion, obstruction, and repression. They considered themselves superior to the Burghers and a benefit to the country, and they were indignant at the favor shown to the Hollanders. They desired to manage local affairs in their own way, and above all to be unobstructed in the accumulation of wealth and in the development of the mining industry. The way to attain these desires which most naturally suggested itself to the Anglo-Saxon mind was to obtain the franchise on terms similar to those exacted in English colonies and in the United States. It is not clear that any large portion of

\* At the last presidential election, in 1893, Mr Kruger was elected by a majority of only 843 over General Joubert, the progressive candidate and now Vice-President, in a total vote of 14,044.

† Mr Wessels says that among the Hollanders you will find "worthy descendants of a race that can boast of Egmont and Horn, of Hugo de Groot and Oudeen Burnerold."



Departure for Umbelosi River Swaziland

CROSSING THE UMBELOSI RIVER, SWAZILAND



the English and American residents were attached to the Transvaal in the sense of regarding it as a permanent home. Most of them meant or hoped to return to Europe or America, and it is probable that even had the full franchise been obtainable after five years' residence, few Anglo-Saxons would have abjured allegiance to England or the United States.\* It was for business purposes that they desired a voice in public affairs, and few of them realized that, to the Boers, granting the franchise seemed equivalent to self-destruction.

So far as I can learn, the great mistake of the Boers was in giving the Uitlanders grave cause for desiring to control the legislation affecting them and the industry they had built up. The Uitlanders could have been quieted by judicious consideration for their convenience, without the franchise and without danger to the independence or the national character of the republic. A prosperous community like that of the Rand would bear extremely heavy taxation with little murmuring; but a prosperous and energetic community is the very last to submit patiently to discomfort, favoritism, and maladministration beyond its own control.

The grievances of the Uitlanders have been very real indeed, and the foreigner on the Rand has not been allowed to forget for an hour at a time that he was a member of an ill-governed community. A few facts will illustrate this condition. The town of Johannesburg, though containing over 50,000 white inhabitants, has no perfected system of lighting, no system of drainage, and no general water supply. There is abundance of water in the neighborhood, but the law of riparian rights, being framed for a purely agricultural population, is such that no water rights can be acquired if a single affected landowner objects. The town has no general municipal government, though there is a board of health. The state has refused until lately to aid education, except when conducted in Dutch. Public meetings of more than six persons may be dispersed at the discretion of the police. The charges of the Netherlands Railway Company are entirely uncontrolled by law, and on a portion of its line its tariff reaches the utterly exorbitant rate of six cents per ton per mile on coal. The company makes profits of 100 per cent, and yet it is not taken over by the state, which has the legal right to assume its ownership. No dynamite is made in the Transvaal, yet a mo-

\* It is probable that a considerable number of Afrianders would naturalise if the conditions were not too onerous. The Burghers, however, dread the influence of the "English-minded" Afriander.

nopoly of its sale has been granted to a company which pays the government something over five shillings per case and charges the miners 85 shillings, of which about 36 shillings is profit. Other concessions of a like character have been threatened, though not carried out as yet. Until August, 1896, the government insisted upon allowing grog-shops accessible to the blacks to be kept open in the immediate neighborhood of the mines and mills, with lamentable results. There is no commission or any body of officials charged with the general administration of the district to whom appeals can be addressed or from whom assistance can be obtained. Taxation is so arranged as to fall almost exclusively on the Uitlanders, and it has not been reduced, although the treasury has a large surplus and although there are no industries to be protected. Many of the officials with whom the Uitlanders come in contact are open to bribery and, it is alleged, will not act except when paid to do so.

It is easy to imagine how very seriously business was and is hampered by these abuses. No fair-minded person can avoid sympathizing with the exasperation of capitalists or mine managers at the needless difficulties thrown in their way and the unjust exactions laid upon them. Enterprising and determined men could not be expected to submit tamely to such conditions, and it is not wonderful that resentment should have carried them beyond the limits of prudence or moderation. In considering the grievances, however, it will be apparent that they bear as a whole much more heavily on capitalists and business men than on employés. White miners, machinists, and mining engineers have almost without exception received higher pay and also made more money on the Rand during the last few years than ever before or in any other region. The direct personal discomforts to which they have been subjected have not been greater than they would have undergone in the mining camps of the United States or of Australia, all of which are much smaller than this. Thus it cannot be denied that the direct and tangible grievances are mainly capitalists' grievances and that the revolt is a capitalist revolt. The employés in joining the movement were influenced by a sense of irritation due to needless deprivation and discomfort and the knowledge that the source of their prosperity was endangered by oppressive exactions.

It is quite obvious that these causes of complaint could be removed by the exercise of a little of the good judgment with which the executive is abundantly supplied. The problem is



vastly less difficult than those with which President Kruger and Dr Leyds have successfully grappled during the past few months. This district might be governed by commissioners and a judiciary appointed by the president of the republic, almost precisely as the District of Columbia is administered. The efficiency of such an administration would depend only on securing able and honest men, and it is absurd to doubt that the Transvaal can secure the services of such. The present tyrannical oppression of the Rand disgraces a people to whom no sacrifices were too great for the attainment of their own freedom. They should be the first to appreciate the hardships under which the Uitlanders are suffering, and to show the value they themselves put on liberty by imposing no unjust restraints upon others.

The Uitlanders made repeated efforts, by passing resolutions and presenting petitions, to obtain the franchise and the redress of grievances. These efforts extended over several years, but they met with no success. During the closing months of 1895 the agitation for reform was accentuated. The discontent of the Uitlanders was at this stage fomented under the guise of sympathy by residents of other portions of South Africa with a view to creating disturbances in the republic for ulterior ends. The idea was broached of making an armed demonstration, which it was hoped might impress the Boers sufficiently to bring about the desired changes. This seemed possible, because the Uitlanders are supposed to number about 50,000 men and the Boers only about 25,000\* adult males.

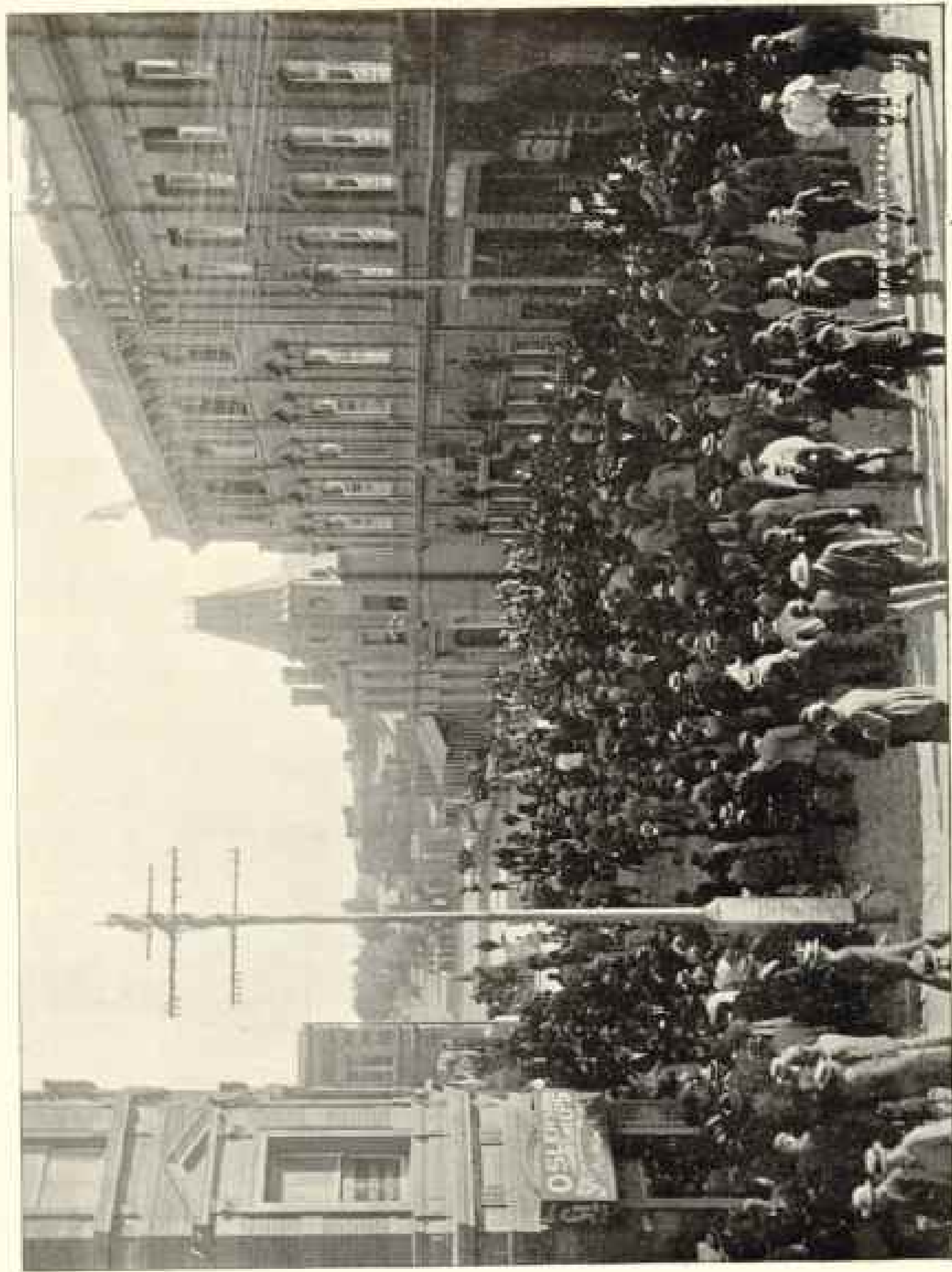
The plan of threatening the government with force of arms was unfortunate from its very inception. Many of the Uitlanders felt that while the grievances were sore, they were not great enough to justify armed revolt, and these men withdrew from the movement. The seceders were chiefly those least susceptible to the influence of the purely English element in South Africa, viz., the Germans and a few Frenchmen. The bad feeling and even alienation arising from this defection is not yet allayed. The split in the Chamber of Mines, which is now unfavorably affecting business, was one of its results. While the Boers were fully equipped, the foreigners were almost unarmed, and the importation of arms is under legal restrictions, originating in the necessity of limiting or suppressing the sale of guns to the blacks. To procure arms in any quantity, therefore, it was necessary to

\* This is Mr Charles Leonard's estimate. The Boers on that basis must count a total population of something like 125,000. The Uitlanders in the republic are very largely bachelors and probably number something like 75,000 men, women, and children.

smuggle them. A few thousand were brought in secreted under coke. A portion of these arms was forwarded by members of the British South Africa Company, better known as the Chartered Company. An arrangement was also made with Dr Jameson, and it has been alleged at his suggestion, that if matters were to go wrong at Johannesburg and the Boers should attack it the Chartered Company's administrator should come to the rescue with a body of men who as a matter of fact were chiefly policemen of the company.

The National Union had formed no plot against the independence of the republic, their idea being either to frighten the administration into granting redress of grievances or at most to substitute forcibly a more liberal administration for the present one. Such an administration would treat commerce more generously and stimulate trade with Cape Colony. This, in the opinion of the Uitlanders, would sufficiently repay Dr Jameson, if, indeed, he required reward for coming to the rescue of his countrymen and countrywomen in case of need.

The union issued a manifesto, defining its demands, on December 26, 1895. On the 30th news was received that Dr Jameson had crossed the border, contrary to agreement and in spite of requests on the part of the leaders of the union to remain beyond the boundary. The same day the reform committee was formed expressly because, as the notice to members states, Jameson's crossing the border "renders it necessary to take active steps for the defense of Johannesburg and the preservation of order." Before dawn on the morning of the 31st the leaders received information that on Jameson's arrival the British flag would be hoisted. This was portentous news for all parties. Without any consent on their own part, the reformers were made partners in an attempt at conquest instead of reformation. For the Americans the situation was particularly grave. For an American to assist in overthrowing a republic in order to aggrandize a monarchy would be to forfeit all respect from his countrymen. There is not the slightest evidence that any one of the seven Americans on the committee either contemplated such a crime or welcomed the situation thrust upon them. Mr John Hays Hammond, the only American among the leaders, took the appropriate step as soon as possible after daylight. He hoisted the Transvaal flag and he both demanded and obtained an oath of allegiance to it from the members of the reform committee, some eighty in all; but for this fortunate action the trial of the reformers in April



FLYING THE TRANSVAAL FLAG ON THE OFFICES OF THE REFORM COMMITTEE, JOHANNESBURG, DECEMBER 31, 1905



would have had more serious consequences. I am not aware that any member, either American or English, demurred to the oath.

The reform committee was a direct and inevitable consequence of the arming of the Uitlanders, coupled with Jameson's invasion. The Boers could not be expected to understand on the spur of the moment that Jameson had invaded the country in contravention of a distinct agreement. The Uitlanders were therefore from the Boer point of view engaged in an attempt to conquer the country; they were public enemies and subject to attack. Knowing this, and not knowing whether the Boers would exercise any forbearance, it seemed needful to the Uitlanders to organize themselves for self-defense.

In the rank and file of the reform committee there were six Americans. Messrs T. Mein, Joseph Story Curtis, and Victor Clement are well known, both in the United States and in Africa, as mining experts and managers; Mr Charles Butters is a metallurgist who has had remarkable success in improving the chemical treatment of gold ores; Mr H. J. King is a partner in the mine-owning firm of S. Neumann & Co., London, and Mr F. R. Lingham is a timber merchant. These men joined the committee very rashly, it is true. They did not know to what extent the Uitlander party had become implicated in treasonable procedures, nor did they stop to inquire. They assumed that nothing further was involved than organization for self-defense, and signed their names without adopting any of the precautions which they would have exercised in putting their signatures to any business documents of relatively trifling import. Of carelessness they certainly cannot be acquitted, but I have not been able to ascertain, either from Uitlanders or Burghers, that there is the slightest shadow of implication in real treason resting on any one of these Americans. Many of the Englishmen associated with them were equally guiltless. It is now easy for the dullest to see that the Americans would have been wiser to take no part in the Uitlanders' revolt. In those December days, on the other hand, it was very difficult to steer an even course over the boiling tide of events, avoiding the headland of Rashness and the maelstrom of Pusillanimity. If some of our men went ashore, they have taken their mishap like men; there has been no attempt to shift the blame and no whining over the issue. Their conduct, at any rate, has been such as we expect, and have a right to expect of Americans.

Every one knows that the revolt ended in a dismal fiasco. The

Transvaal government was evidently prepared for the invasion. Jameson and his troopers were captured with all their documents and even the key to their cipher dispatches. The Johannesburgers laid down their arms, and most of the reform committee were arrested. At their trial, in April, four of the leaders,\* including Mr Hammond, pleaded guilty, on advice of counsel, to high treason, and the remainder pleaded guilty to *lese majesté*,† excepting Mr Curtis, who was detained by illness in Cape Town. His trial was postponed. The leaders were condemned to death on April 28, but the next day their sentence was reduced to fifteen years' imprisonment. The rank and file of the reform committee were given terms of imprisonment ranging from a few months to a couple of years. For some weeks no further mitigation of sentence was announced, and during this interval the government took occasion to publish telegrams and maps captured from Jameson's party, showing how deliberate had been the plot to deprive the republic of its independence. Such of the mass of the reformers as signed a petition for mercy were then discharged, on payment of a fine of £2,000 each. Two of them only, both Englishmen, refused to sign any appeal for clemency, and these gentlemen, whose attitude seems to most people a mistaken one, still remain in jail, so far as I am informed. Early in June the leaders also were released, on payment of the heavy fine of £25,000 each. They were given permission to remain in the Transvaal on condition of signing a pledge not to meddle in the affairs of the republic. This Colonel Frank Rhodes refused to do, and he was promptly escorted to the border. Mr Curtis, when sufficiently recovered from a very dangerous illness, presented himself in July for trial, but refused to plead guilty. The government, however, declined to proceed against him under plea of not guilty, evidently because it was loath to reopen the whole disagreeable question. I understand that Mr Curtis has contributed £2,000, the amount his comrades were fined, to the charities of the Transvaal, not caring to take pecuniary advantage of his exceptional position.

The surrender of Dr Jameson and his officers to the British

\* Mr Charles Leonard, one of the five leaders, left the country before the arrest of the reform committee. The other leaders were Messrs George Farrar, Lionel Phillips, and Frank Rhodes.

† The prisoners understood that there was an understanding between their counsel and the prosecution that the plea of guilty would be followed by a mild sentence. This arrangement is wholly denied by the prosecution and, according to Reuter, by counsel for the defense. I have not been able to ascertain the origin of the misunderstanding. A trial would have resulted in much ill-feeling, and it is as well that it was avoided.

authorities by the government of the Transvaal and their subsequent trial in London need not be dwelt upon. The leader was condemned to fifteen months in prison, without special privileges, but he was shortly afterward granted the status of a first-class misdemeanant as an act of clemency. So far as I could learn, the sentences passed on the raiders were regarded in the Transvaal as adequate but not excessive. The share of Mr Cecil Rhodes and of the Chartered Company in responsibility for the raid is still to be investigated.

Quiet once more reigns in the Transvaal. The Uitlanders are again pressing for reforms, but there is no thought of revolt. The Burghers are now alive to the need of reforms, and as they seem anything but vindictive, I believe they will gradually concede what a sense of justice demands.

The Reformers, though very able men in their own professions, have been mere puppets in the hands of men whose designs were much larger and more dubious than the correction of the Uitlanders' grievances. The honest soreness of the foreigners over their wrongs was taken advantage of to excite them to a rebellion not justified by the provocation. The Transvaal government showed little business ability in giving or tolerating even a shadow of excuse for rebellion, but in the active contest which followed it displayed an astuteness for which the ability of its enemies was no match. The union of South Africa under British hegemony, for which Mr Rhodes has labored so persistently, seems further off than ever. The Transvaal burghers are substantially Dutch; so are the citizens of the Free State; so, too, are four-fifths of the Cape Colonists. The bond of sympathy between the Boers throughout South Africa has been drawn much closer during the past few months. The *Africander League* in Cape Colony, which aims at "Africa for the *Africanders*", *i. e.*, practically for the Boers, is much stronger than it was, and the whole race now sees in the Transvaal, which is arming to the teeth, an intellectual ability to cope with the larger questions of politics which has not hitherto been available. It seems today as if the position of the South African Republic in this region were very much like that of Prussia in the divided Germany of forty-one years ago. The whole country is in a state of tension, and a blundering policy on the part of the Paramount Power might have unusually serious consequences. Thus South Africa will probably command a larger measure of interest and attention from the world henceforth than hitherto.



## THE ECONOMIC ASPECTS OF SOIL EROSION

By DR. N. S. SHALER,

*Professor of Geology in Harvard University and Dean of the Lawrence  
Scientific School*

### II

As the scattered drops of a shower gather into streams the water begins to act in an erosive way. If this gathering takes place at the height of five thousand feet above the sea, each pound of the fluid has a store of energy of position, which we term five thousand foot-pounds, which it is to expend on its path to the sea. When the rain comes down on highlands, the first stage of its journey to the sea is commonly made at high speed in torrents. In the torrential division of a river system we always find the surface cast into steep-sloped valleys. Generally the whole surface is composed of inclines ranging in declivity from five to thirty degrees or more, on which surfaces the soil, if it be present, is always moving down the incline at a variable rate. At times (especially when softened by the frosts of winter and filled with water) the earth on these steep hillsides slips in the manner of a landslide down to the bed of the stream. There it for a short time blocks the way of the torrent, but it is swiftly carried down to the river channels. Commonly the movements of these earth masses is in the manner of a glacier, slow, but steadfast, amounting to a few lines or a few inches a year; rarely to a foot or two in that length of time. So general is this movement that although not readily noted without precise observations it may by accurate observations be determined on nearly all steep slopes which are covered with a thick layer of soil. During the movement the expansion of the earth water in times of frost, the enlargement of the roots which penetrate the soil, and in a measure the process of wetting and drying the detritus operate to thrust the mass, the movement being in all cases in the direction in which gravity inclines it to go. Arriving at the margin of the torrent, the procession of the detritus is cut away by the swiftly moving waters and sent on its way to the sea.

As above indicated, this process of erosion by the slipping of the soil toward the torrent beds is characteristic of all steeply

turned fields. So long as the earth is covered by the normal forest growth the strong roots are likely to pass through the soil and fix themselves in the crevices of the underlying rocks and clamp, so to speak, the loose materials in their place. In this way it comes about that one of the effects of deforesting a country, even where the lesser vegetation is allowed to develop, is to increase the rate at which the soil goes away to the streams. As yet this country has not been long enough exposed to the destructive effects of tillage to afford striking instances of the effect of the reckless war which is waged upon the woods by the savages who play that they are the agents of civilization. In Europe examples of the irreparable damage which may thus be wrought abound. Perhaps the most striking are to be found in the Apennines, near Florence, where it is possible to walk for miles on mountain slopes without setting foot on anything but bare rock fields, which a century or so ago bore heavy forests nurtured in a fertile, if not deep, soil. The last of the Medicis who held these woods as crown lands cut the timber without any provision for the replacement of the trees, with the result that the fine soil, before it had time to obtain protection from plants, was swept away. In this manner a great area has been doomed to age-long sterility and a region made desolate which might with proper management have continued to be helpful to man for an unlimited period.

The mountainous countries of the Old World, with their vast reaches of bare rock slopes, which down to recent centuries were forest-clad, show the destructive effects of man's heedless assault on the earth. In this country there has not been time for this process of destruction by the axman to manifest itself in a very serious way, yet in the Appalachians we can see the evil in rapid progress. South of Pennsylvania there is, according to my reckoning, based on observations in every state in that upland country, an aggregate area of not less than three thousand square miles where the soil has been destroyed by the complete removal of the woods and the consequent passage of the earthy matter to the lowlands and to the sea. At the rate at which this process is now going on, the loss in arable or forestable land may safely be reckoned at not less than one hundred square miles per annum; in other words, we are each year losing to the uses of man, through unnecessary destruction, a productive capacity which may be estimated as sufficient to sustain a population of a thousand people.

In considering the destruction which the elemental conditions bring upon a country which is subjected to the tax of civilization, the most important fields to be noted are those of the highland districts, for the reason that there the slopes are, on the average, steepest, the rainfall is greatest, and the action of frost is most considerable. There the process of erosion is the most rapid and the results are the most irremediable. There are, however, no lands in this country or in any other where the waste due to tillage is not noteworthy. Even in the prairies, where the average declivity of the surface is not more than one or two degrees, the effect of that baring of the earth which is the necessary first step of tillage is to send a share of the earthy matter from the fields to the streams and thence to the seas. The close observer who will walk for a day during a time of protracted rain along the banks of a main stream is likely to find that some of the tributaries carry water which is nearly clear while others discharge a very muddy flow. Examining the cause of the difference he will note that the relatively clear brooks come from fields that are not tilled, being either in forest or grass, while those which are very muddy have a large proportion of their area under plow culture. While the destruction of a plowed field in a given time is greater in proportion to the steepness of its slope, there are practically no fields, however slight their declivity, which are not exposed in the same considerable measure to this kind of wasting. In a degree it is the inevitable accompaniment of tillage, which rests on the plan of expelling the natural growth of a soil that place may be made for artificially imposed vegetation. However carefully the work may be done and whatever the nature of the crop, the earth is for the time bared to the assaults of rain and wind.

The question may well be asked whether, if this loss by erosion is a necessary element of tillage, it is not certain that in time all the soils will go on their way to the sea, and the earth thus be made unfit for the uses of man. The answer to this is that the natural regimen of the soil provides a way by which a certain amount of waste in its mass may be in almost all cases made good through the decay of the underlying rocks. This is accomplished by the action of that part of the rain-water which does not flow over the surface but finds its way into the soil and is slowly yielded to the streams in the form of distinct springs, or more commonly in the broad sheet of water which flows down along the bed-rock or the hard-pan until it enters the drain-

age channel of the area. This underground water, except in the rare places where caverns abound, moves very slowly and has no erosive effect. What material it takes away—a relatively small amount—is removed in solution. Penetrating to the bed-rock, this water, charged with carbonic dioxide and other compounds which add to its decay-bringing effects, attacks the bed-rocks, breaks them up, and with the assistance of the roots of the sturdier plants brings the hard stones into the state of soil. In this way the natural waste derived from the solutions effected by the underground water, the cutting along the streams, and the slight wearing of the general surface by water action is compensated for by the steadfast reproduction of the soil at its base.

In the state of nature the rate of degradation of the earth's surface over a region such as the Mississippi valley appears by the studies of Humphries and Abbot to be not far from one foot in five thousand years. At this rate of erosion, we may from the field evidence presume that the underground decay will keep somewhat ahead of the wearing actions, and so the soil rather gain than lose in depth. Under complete tillage, such as is now applied, the rate of downwearing will probably become as great as that which exists in the valley of the Po, where the surface descends at the rate of about one foot in a thousand years. Under these conditions we may be sure that the underground replacement of the soil cannot compensate for the wearing, and that consequently the fertile layer will gradually disappear, as it has done over large areas in the Old World and is now doing in other fields of this country.

Before proceeding to questions of a distinctly economic nature—those which concern the steps which should be taken to arrest the wasting of our soils—it will be well for us to consider the processes and rates of erosion on two of the many varieties of soils which plentifully exist in this country, namely, those of our glaciated districts and those found in the alluvial plains beside the true rivers. The first of these classes constitute about one-third of the possible agricultural and forest lands of this country; the second is of much smaller aggregate area, but on account of its exceeding fertility is of almost equal tillage value.

In glaciated districts experience shows that the risks of destructive erosion are relatively small. This is owing to the fact that the drift covering, which in its superficial modification constitutes the soil of those regions, is almost always composed of debris so deep and so loosely aggregated that the greater part

of the rain-water enters into the earth and thus is preserved from doing erosive work. The result is that even in times of flood the streams draining from these fields covered by glacial debris are never very muddy; they have no important alluvial plains and characteristically lack the deltas or detrital cones which are such a prominent feature of the streams which flow from non-glaciated regions. In such fields soil erosion is so slight that it may give us no concern, except on the steeper mountain slopes, where the slipping of the deposited soils into the torrents may occasionally expose the bare rocks.

On the alluvial plains—at least so long as the down-cutting of the stream bed does not leave them above the level of the floods—the annual inundations constantly bring down layers of fertilizing sediment, and this at a rate which is pretty sure to compensate for any waste which the most reckless agriculture can bring about. Such soils, unlike those of our ordinary fields, grow by accessions on the surface and not by the decay of the bed-rocks. It is to this constant superficial gain in fertile materials that they owe their peculiar value to man. Alluvial lands are, however, subjected to a peculiar kind of erosion—that brought about by the lateral swinging of the river channels to and fro in their flood-plains. These peculiar, pendulum-like movements of the great rivers through their delta accumulations are important for the reason that they are not easily controlled and are often disastrous to the interests of men who dwell upon their banks. The movements are often made in a very rapid manner; moreover, where the streams change their courses in one portion of the alluvial plains the regimen of the currents is so altered that the curves thence downward to the mouth are subject to rapid modifications. In this manner the Mississippi has been endlessly wandering over the flood-plains between Cairo and the sea.

The natural check to the divagations of a river is found in the protective action due to the growth of trees upon its banks. There are many species which have habits of growth that permit them to flourish in places where their roots and stems are bathed by the floods for a considerable part of the year. These forms have fine roots which entangle the sediments deposited at high water, and they have a habit of growing in close order, so that their thick-set stems arrest the current and cause a plentiful deposition of sediment on the gravel which they occupy. If such a forest develops on one side of a river while the banks on the opposite border are not thus protected, the result usually is

that the wooded shore advances while that which is defenseless is worn away. Many of the stream-swingings are readily explained by alternations in the development of the water-loving trees. Thus, while the oscillations of rivers cannot be altogether controlled by the planting of these trees, these changes can be considerably reduced by the proper use of such defenses.

From a large economic point of view, it will readily be seen that the changes in the courses of the great rivers are not very serious, and this for the reason that the area removed on the one side of the channel is in a manner compensated for by a growth on the other side. It is otherwise with the smaller streams which have slight alluvial plains, and which often have their channels pressed in against either bank. In these cases the water cuts away the base of the declivity and brings about the rapid movement of the soil down the slope. The loss of tillage area due to this action is considerable; from certain studies which I have made in the country in the basin of the Ohio river, especially in that part of it which lies to the south of the main stream, it may be reckoned that since the general removal of the forests an area of not less than 150 square miles, outside of the torrent section of this river system, has partly or completely lost its soil through this action.

We have now glanced at the several modes in which the solar energy, operating through the instrumentality of the winds, the waves, and the rain, tends to remove the detrital covering of the earth on which the substance of all land life depends. We may note in summing-up the matter that the attack of the waves is practically irresistible, but that its effect is gradually to diminish the area of the lands, the process going on so slowly that the immediate effect on human interests is very small. Moreover, as one part of the lands is worn away, compensation is generally made by the uplifting of other areas above the ocean level. The work of the winds in blowing away the friable earth coating is slight, and that for the reason that the surface is well protected by the coating of vegetation. It is when we come to consider the action of the rain that we find ourselves face to face with the really important economic problems of erosion. We have seen that in the state of nature the lands are provided against the destruction of the soil which the rainfall would otherwise cause by the admirably contrived protection afforded by the vegetal coating. If man occupied the earth under the same conditions as the other creatures of the land, he would not disturb the an-



cient and beautiful relations of the earth and its living mantle. In this case the wasting of the soil would go on, but at a rate no greater than it would be replaced by the decay of the upper part of the bed-rocks. The continents would gradually be lowered by the leaching out of the mineral matters in their superficial debris, and in some measure by the direct wearing action of the streams, but the life-giving covering would descend from stage to stage, affording at each step such fertility as the rocks on which it lay might determine.

The primitive man disturbed the conditions of the soil no more than did the lower animals. He made avail of the natural products of forest, field, and stream, never stirring the earth except, it might be, to bury his dead; but in the first step upward he began his manly career as a devastator. He became a soil-tiller, and with the invention of this art began the greatest revolution in the economies of the earth that has ever been instituted by a living being. Each extension of civilization has widened the field of destruction, until nearly one-half of all the land is subject to its ravages. It is now a question whether human culture, which rests upon the use of the soil, can devise and enforce ways of dealing with the earth which will preserve this source of life so that it may support the men of the ages to come. If this cannot be done, we must look forward to the time—remote it may be, yet clearly discernible—when our kind, having wasted its great inheritance, will fade from the earth because of the ruin it has accomplished. It should be the province of science to point the way to the remedy for this ill.

It seems to me to be the point of first importance to make clear to the people the conditions under which the earth can be made to yield its fruits without destructive tax upon its resources. To attain this end they need, in the first place, to know that the rainfall which flows over the surface is that which does the work of soil destruction; so far as this surface water acts on the soil its influence is evil. The share of the rain which enters the earth does not, until it emerges in the temporary springs, do any erosion work whatever. In a variable measure it removes the soil materials in the state of complete solution, to appear as the mineral matter of the springs; but this very limited destructive effect is on all naturally protected soils more than compensated for by the action of the ground water in promoting the decay of the bed-rocks, a process by which the soil is deepened and enriched. In the state of nature all the rainfall is indirectly led



underground and made to do its appropriate work. In the condition of our ill-organized tillage so large a share of the precipitation is sent in its destructive superficial way that the lower soil often lacks the share of moisture which is necessary for the work of decay in the underlying rock, and which would be most useful to the crops in time of drought.

Although it is very difficult to make a newly overturned soil safe from the assaults of the rain, I believe that with a careful and in a large way economical system of tillage it can be done, at least provided the inventors can help us over certain mechanical difficulties. In the first place it should be noted that the plow, which has been much vaunted as a noble contrivance, is as ordinarily used an instrument which most effectively serves to compact the earth, so that when the few inches of ground filled become soaked with water the fluid cannot penetrate into the deeper part of the earth. The reason for this injurious action can readily be understood. The pressure of the foot of the plow, due to the counter-thrust of the force used in dragging it forward through the earth as well as to the weight of the instrument, serves in a very effective way to compact and smear the surface over which it passes. When the frost penetrates deeply, the heaving action which it effects operates in a measure to overcome this effect of the plow, but in almost all fields, especially those of the southern part of this country, the artificial hard-pan is to the skilled eye most evident. It needs but a comparison of a bit of land which has been long under the plow with a like area still in virgin forest to show the true measure of this action. The one is for a few inches in depth moderately open, but at a lower level is so hard that water can penetrate it only in a slow way; the other is open-textured to so great a depth that the rain and roots can penetrate in most cases to the rock which has not yet been broken up.

There is needed an instrument which will turn the soil in the manner of the spade, a tool which does not pack the under earth, but leaves it in a position very favorable to the downward movement of the water. As my friends who know the nature of mechanics tell me that it will be difficult to make such a contrivance, we may have to content ourselves for a considerable time to come with the ancient, but to my mind by no means venerable, utensil which has already sent the substance of millions of men to the sea. There are ways of using the plow by which its evils may be minimized. In the first place, the tilth

should be made as deep as it well can be. The void spaces in the ground which is overturned to the depth of ten inches will if the earth be ordinarily dry take in a rainfall of an inch or perhaps an inch and one-half in depth falling in, say, two hours, without any surface flow; while if the depth of the tillage be but five inches half the water would have to pass over the surface. The well-known, but unhappily little used, process of subsoil plowing if discreetly used is also a valuable means of effecting the penetration and storage of water; underdraining also tends to the same end. In certain parts of the southern states of this country, where the evil effects of the surface flow have forced themselves upon the attention of the people, the farmers have begun to guard against the destructive action of this agent by forming temporary benches in the sloping fields. In the Old World the system of benching the hillsides is carried much farther than it is in any part of this country. In Germany, France, and Italy the greater part of the land that lies on steep declivities which have not been brought to ruin in the earlier and less conservative agriculture is now protected from destruction. Although we may expect a constant gain in the application of this conservative treatment of our fields, we cannot look to it alone for their safeguarding. Another class of precaution demanded by the elemental conditions of this country must be taken, and that we will now note.

Owing to the fact that in North America generally the rainfall is apt to have a torrential character (the precipitation taking place at a rate which is not common in Europe) and to the fact that these downpourings are likely to occur on ground which has been loosened by the frost, our soils are exposed to a measure of danger much greater than that which menaces the fields of the Old World. There appears to be but one way by which we may meet this danger—this is by limiting the work of the plow to those fields which have a degree of slope so slight that with proper tillage they may not be exposed to scouring action. Although this classification has to be made for each district and species of soil, it may in general be said that no field which has a greater slope than five feet vertical in one hundred feet of length should in any country be exposed to the danger which ordinary cropping inflicts. Areas from this measure of inclination upward to thrice this rate of slope, or to a maximum of fifteen feet in the hundred, may reasonably be plowed in order to bring them into the state of grass lands, but should not be

tilled more than is necessary to retain them in this state. All areas having a slope of more than fifteen feet in one hundred should, by the rules which the conservator of the soils is disposed to lay down, be devoted to forests, which afford the only crop that can be harvested from such ground without a swift and irremediable loss of fertility.

It may be asked how these rules can be enforced. After much consideration of the matter, I am satisfied that our only reliance is on an education which will bear in upon our people the duty they owe to the soil and the ways in which they may discharge this great obligation. Our folk are dutiful; at every step in their advance they have striven, not for the moment's profit, but for the good of generations to come. If this admirable motive be impressed by knowledge, we can trust to it for the remedy. The scarred and unfertile fields of this country, which, to the extent of millions of acres, mark the results of a few generations' life upon areas which nature fitted for the unending support of man, are not evidences of lack of care on the part of the people who brought this ruin. They were of the breed which willingly lays down life for an idea, for a belief in creed or state. Teach them what the soil means to their kind, instruct them in the arts by which it may be cared for, and we may trust, as we needs must, to the fruit of this knowledge.

It is much to be deplored that there is not in our schools a single book to tell the youth what every one should know concerning the foundations of life in the soil or the conditions under which the generation to which he belongs may pass on the precious heritage to those who are to come after. Such instruction can alone be enforced through the exertions of those who have been brought to see the truth and who are willing to labor for its diffusion.

---

## A CRITICAL PERIOD IN SOUTH AFRICAN HISTORY

The years 1876-77, of which it was beside the purpose of Mr George F. Becker to treat in his long and interesting article on the Witwatersrand and the Revolt of the Uitlanders, constituted one of the most critical periods in South African history. The story of the successive crushing defeats inflicted upon the Boers by the Kaffirs, of the bankruptcy of the Boer national treasury, of the demoralization of the Boers themselves, of the state of

anarchy into which the republic drifted, of the danger of a general uprising of the natives throughout the whole of South Africa, of the appeal made to the British government by a portion of the Boer nation, and of the strenuous efforts of the president of the republic to arouse the nation at large to a sense of its "impending dissolution" and to induce it to enter a confederation with the British colonies on the model of the Dominion of Canada is all impartially related in the volumes of Appletons' Annual Cyclopaedia covering the period in question.\*

All writers are agreed that at this time the Boers were utterly unable to defend themselves against the natives; their forces in the field had been overwhelmingly defeated and protection for their families and property could be secured only by the payment of blackmail to the native chiefs. To add to the demoralization created by the success of the Kaffirs in the north the Zulu king threatened invasion from the south, and the Boers were declared by their own president to be without any proper conception of their obligations as a civilized government. Emboldened by their success against the republic the natives everywhere assumed a menacing attitude, and a conflagration that would have overspread the whole of South Africa seemed on the verge of breaking out. Whether the Boers had at that time any idea of reasserting their independence after the subjugation of their enemies by the British there is no evidence to show, but it is an indisputable fact that they exchanged their independent sovereignty, such as it was, for British protection, if not with an enthusiasm at variance with their stolid character, at least with undisguised satisfaction and a manifest sense of relief.

Two years or a little more after the annexation of the Transvaal the British, after sustaining several serious reverses, completely broke the Zulu power and captured its warlike king, Cetewayo. Three months later Secocoeni, the Kaffir chieftain to whose military skill the complete overthrow of the Boers had been largely due, surrendered to British authority. This subjugation of the natives paved the way to that reestablishment of the Boer republic which took place the following year.

While the two cases are not in every respect analogous, the encroachments of the British on the dominions of the Boers are not unlike those of our own frontiersmen on the treaty reserva-

\*See Appletons' Annual Cyclopaedia, New Series, Vols. I-II, 1876-77, Articles, "Africa," "Cape Colony," and "Transvaal Republic." See also the Book of Facts, Harper Brothers, New York, 1885, p. 871.

tions of the Indians. It is not the national government that is primarily at fault in either case, but the miner, the trader, the stock-grower, the land-grabber. In both cases those occupying the country are either too ignorant or too shiftless to develop its resources for themselves, and the temptation to take possession is too great to be resisted by those restless, dauntless, and oftentimes ungovernable spirits who have been impelled by some mysterious centrifugal force to the periphery of civilization. J. H.

## PROCEEDINGS OF THE NATIONAL GEOGRAPHIC SOCIETY, SESSION 1896-'97

*Special Meeting, October 9, 1896.*—President Hubbard in the chair. Vice-President Girdley delivered an address on Recent Geographic Progress, with Special Reference to Explorations in the Arctic Regions and Africa.

*Special Meeting, October 16, 1896.*—President Hubbard in the chair. Mr Geo. F. Becker read a paper, with lantern-slide illustrations, on The Witwatersrand and the Uitlanders' Revolt.

*Special Meeting, October 23, 1896.*—President Hubbard in the chair. Rev. John N. MacGonigle, of St. Augustine, Fla., addressed the Society on The Geography of the Southern Peninsula of the United States, illustrating his address with lantern slides.

**ELECTIONS.**—New members have been elected as follows:

*October 2.*—W. H. Beal, Hon. John B. Cotton, Wm. H. Darlington, Miss E. B. Eakle, Geo. K. French, Maj. Clément de Grandprey (French Embassy), Mrs M. B. Hitz, Chas. W. Little, Mrs Rosa McCabe, James A. Mitchell, C. H. Shales, Prof. J. F. Sims, W. G. Steele, Mrs P. M. Stocking, Chas. W. Thompson, W. M. Van Dyke, Fred. C. Warman, Fletcher White, Rev. Earl M. Wilbur, Dr James Woodrow, W. Redin Woodward, Miss M. Zimmerman.

**OBITUARY.**—The Society has to deplore the deaths of the following members: Mr Edward Kübel, an old and much respected citizen of the District of Columbia, for many years connected with the U. S. Geological Survey; Mr Philip S. Abbot, a man of remarkable abilities and one of the most skillful and intrepid of mountain climbers, who lost his life by falling down the great precipice of Mt. Lefroy, Alberta, when engaged in the exploration of that almost inaccessible mountain, in company with other well-known members of the Appalachian Mountain Club; and the Hon. Edwin Willits, Ph. D., successively Member of Congress, President of the Michigan State Agricultural College, Assistant Secretary of Agriculture, and President of the U. S. Commission for the World's Columbian Exposition; also a member from 1892 to 1895 of the Board of Managers

of the National Geographic Society; an able and conscientious executive officer, a wise counsellor, and a faithful friend. J. H.

---

## GEOGRAPHIC NOTES

### ASIA

**INDIA.** The total length of the railways of India on March 31, 1896, was 19,677 miles, an increase of 822 miles during the year. In addition, there were 6,789 miles the construction of which was sanctioned, but which were not yet in operation. The proportion of passengers killed was one in nineteen millions, and the total number either killed or injured from railway accidents of all kinds was only 1 in 518,951.

**TIBET.** An important addition to geographic knowledge is expected to result from the journey across Tibet recently undertaken by Captain H. H. P. Deasy, an officer of the British Army. Captain Deasy will throw into the different streams he may encounter water-tight cans containing the request, in English and French, that an accurate statement as to where they are found may be forwarded without delay to the Royal Geographical Society, London. It is hoped that some of them may be found in the Brahmaputra, Salween, and Mekong, and thus help to solve the problem of the origin and connections of these rivers.

**CHINA.** Of the two ports to be opened to foreign commerce under the treaty with Japan, that of Hangchow is the more important. A city of 800,000 inhabitants, and the richest and perhaps the finest in the empire, it is the capital of Chékiang, a province containing the most extensive silk and tea district in the world. It is believed that the opening of this port will revolutionize the tea trade of middle China, and divert considerable commerce from Shanghai to Ningpo, the natural seaport of Hangchow. Chékiang, a state of 35,000,000 inhabitants, produces two-thirds of all the silk exported from China, and is also the largest cotton-producing province. Other exports of special importance are straw goods, wine, alum, hemp, indigo, fans, and vegetable tallow from the tallow tree.

---

The thanks of all interested in geography are due to Messrs J. Scott Keltie and Hugh Robert Mill for the painstaking care with which they have edited the Report of the Sixth International Geographical Congress, held in London, 1895. This handsome volume of 1,116 pages is a worthy supplemental outcome of those personal labors, marked by tact, courtesy, and ability, by which its editors, in their capacity as secretaries, contributed so greatly to the success of the Congress. Among the more important papers of professional interest may be mentioned those of Buchanan on Oceanography, Chapman on the Mapping of Africa, Levassour on the Teaching of Geography in Schools and Universities, Neumayer on South Polar Explorations, and Walker on the Geodetic Survey of India. Ravenstein's appended Catalogue of the Exhibition is of permanent value.

A. W. G.



## AN IMPROVED METHOD OF KEEPING THE SCORE IN

# DUPLICATE WHIST, COMPASS WHIST, STRAIGHT WHIST AND EUCHRE.

Since Duplicate and Compass Whist have come into fashion there has been an unprecedented revival of interest in the game, due to the fact that mere luck is to a large extent eliminated by a comparison of the scores made in the play of the same hands by different players.

The one thing needed to perfect the new method has been a convenient device by means of which the score made on the first round can be concealed until after the replay of the hands, as a knowledge of the first score often enables a good player to make a decisive gain, and matches are lost and won on just such little chances.

A Washington player has at length invented and put upon the market at a very low price a little device which admirably answers the purpose, and at the same time serves as a pretty and useful table ornament, marker and pencil rest. It is called the "Cosmos Counter," and consists of a little polished wood tablet with a metal keyboard that can be clamped down on the score in such a way as to bring 24 little metal plates over the 24 spaces in the "score" column of the card, for use in concealing each first score as soon as recorded and until the hand is replayed (in duplicate whist) or the entire series finished (in compass whist).

Whist players will at once see the advantage of this new method of keeping the score, as it effectually prevents their opponents at the same or another table from taking advantage, either by accident or design, of a knowledge of what the hand is capable. The trouble with duplicate whist, especially, is that the replay is liable to be influenced by memory of the cards and score, and anything that helps to confuse such recollection is a great gain to fair play.

The "Cosmos Score Card," prepared for use with the counter, shows several new features, such as a heading for both Duplicate and Compass Whist and (on the reverse) for Straight Whist, Euchre, &c., thus enabling the same counter and score to be used for any game of cards.

Cosmos Counters, with tablet of quartered oak, maple, or birch, and metal in either gold or silver finish, 50 cts. apiece; 6 for \$2.75; 12 for \$5; by mail, 4 cts. apiece extra. Cosmos Score Cards, 25 cts. per package of 50; 25 packages for \$2.50; by mail free of postage.

Ask to see samples at any stationer's, or order direct from the General Agents.

<b>Cosmos Duplicate Whist Score</b>						
<b>N</b>			<b>E</b>			
<b>S</b>			<b>W</b>			
HAND	COMPASS WHIST					HAND
	SCORE	TOTALS	TRUMP	OPPONENTS		
	DUPLICATE WHIST					
SCORE	GAIN	TRUMP	GAIN	SCORE		
1						1
2						2
3						3
4						4
5						5
6						6
7						7
8						8
9						9
10						10
11						11
12						12
13						13
14						14
15						15
16						16
17						17
18						18
19						19
20						20
21						21
22						22
23						23
24						24
<b>TOTALS</b>						<b>TOTALS</b>
.....						.....
.....						.....

Copyright, 1911, by Everett Horton, Washington, D. C. For use with the Cosmos Duplicate Whist Counter, patented July 1, 1910.





CHESAPEAKE  
AND  
OHIO ROUTE.

"The Rhine, the Alps and the Battlefield Line."

THE  
FAMOUS **F.F.V.** LIMITED  
FAST FLYING VIRGINIAN

IS THE ONLY SOLID VESTIBULED TRAIN, ELECTRIC-LIGHTED, STEAM-HEATED,  
WITH THROUGH DINING CAR,

BETWEEN

NEW YORK, PHILADELPHIA, BALTIMORE, WASHINGTON

— AND —

CINCINNATI, LOUISVILLE, ST. LOUIS, CHICAGO, AND THE WEST.

OBSERVATION CAR ATTACHED.

H. W. FULLER, General Passenger Agent, WASHINGTON, D. C.

**The Mutual Life Insurance Company**  
OF NEW YORK,

RICHARD A. McCURDY, President.

— IS —

• The Largest and Best Life Insurance Company in the World. •

Assets over \$220,000,000.

The Mutual Life has Paid since Organization . . . . .  
. . . . . Over \$388,440,897 to Policy-holders.

The New Instalment Policy issued by this Company  
is admirably adapted to the wants of the Insuring Public.

EVERY DESIRABLE FORM OF POLICY IS ISSUED BY

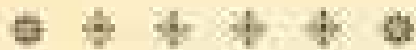
THE MUTUAL LIFE INSURANCE COMPANY OF NEW YORK.



# SOUTHERN RAILWAY

GREATEST

## SOUTHERN SYSTEM.



Penetrates with its main line or branches eight States South of the Ohio and Mississippi Rivers, and in conjunction with its friendly allied connections reaches all the commercial centers of the South and Southwest . . .

### DOUBLE DAILY VESTIBULED LIMITED TRAINS

. . . BETWEEN . . .

Washington and Chattanooga via Salisbury, Asheville and Knoxville.  
Washington and Tampa via Columbia, Savannah and Jacksonville.  
Washington and Memphis via Atlanta, Birmingham and K. C. M. & B.  
Washington and Galveston via Atlanta, Montgomery and New Orleans.  
Washington and Birmingham via Lynchburg, Charlotte and Atlanta.  
Norfolk and Chattanooga via Salisbury, Asheville and Knoxville.

Pullman Sleepers—Dining Cars—Day Coaches.  
Additional Trains for local travelers . . . . .

The direct line to the { FLORIDA, GULF COAST and TEXAS,  
Winter Resorts of { . . . . . MEXICO and CALIFORNIA.

—AND THE BEST—

Through Car Line to and from Asheville and Hot Springs—"The Land of the Sky."

Write for Map Folders.

R. D. CARPENTER, General Agent, 271 Broadway, New York City.  
L. S. BROWN, General Agent Passenger Department, Washington, D. C.  
WM. HENRY TAYLOR, District Passenger Agent, Norfolk, Va.

S. H. HARDWICK, Assistant General Passenger Agent, Atlanta, Ga.

C. A. BENSOTER, Assistant General Passenger Agent, Chattanooga, Tenn.

J. M. CULP, Traffic Manager.

W. A. TURK, General Passenger Agent.

## WHENEVER YOU VISIT WASHINGTON . . .

YOU ARE INVITED TO INSPECT THE

\* MAMMOTH DRY GOODS ESTABLISHMENT \*

OF

# WOODWARD & LOTHROP

Where the LATEST PARIS NOVELTIES are always on Exhibition.  
The attention of those who anticipate purchasing . . . . .

## BRIDAL TROUSSEAUX

Is invited especially to extreme PARIS NOVELTIES in matched sets of French Hand-made Lingerie, including Gowns, Skirts, Chemises, Drawers, Corset Covers, &c. These can be furnished in any number of pieces desired.

HAND-MADE BRIDAL TROUSSEAUX, personally selected in Paris and exclusive in style and design: Three or more pieces . . . . .

# \$10 to \$250.

CORRESPONDENCE SOLICITED. MAIL ORDERS RECEIVE PROMPT AND CAREFUL ATTENTION.

TENTH, ELEVENTH, AND F STREETS N. W. . . . . WASHINGTON, D. C.

## National Geographic Monographs

ON THE PHYSICAL FEATURES OF THE EARTH'S SURFACE, designed especially to supply to teachers and students of geography fresh and interesting material with which to supplement the regular text-book.

LIST OF MONOGRAPHS COMPRISING VOLUME I:

GENERAL PHYSIOGRAPHIC PROCESSES . . . . .	} J. W. Powell
GENERAL PHYSIOGRAPHIC FEATURES . . . . .	
PHYSIOGRAPHIC REGIONS OF THE UNITED STATES . . . . .	} Prof. N. S. Shaler
BEACHES AND TIDAL MARSHES OF THE ATLANTIC COAST . . . . .	
PRESENT AND EXTINCT LAKES OF NEVADA . . . . .	Prof. I. C. Russell
APPALACHIAN MOUNTAINS—NORTHERN SECTION . . . . .	Bailey Willis
APPALACHIAN MOUNTAINS—SOUTHERN SECTION . . . . .	C. Willard Hayes
MT. SHASTA—A TYPICAL EXTINCT VOLCANO . . . . .	J. S. Diller
THE NEW ENGLAND PLATEAU . . . . .	Prof. W. M. Davis
NIAGARA FALLS AND ITS HISTORY . . . . .	G. K. Gilbert

Price for one set of ten monographs, \$1.50. Five sets to our address, \$6.00. Single monographs, 30c.

Remit with order to **AMERICAN BOOK COMPANY,**  
New York . . Cincinnati . . Chicago

The RATES FOR ADVERTISING in THE NATIONAL GEOGRAPHIC MAGAZINE will be furnished on Application to the MANAGER, No. 1458 EUCLID PLACE, WASHINGTON.

Ripans Tabules assist digestion.

## THE AMERICAN ANTHROPOLOGIST.

The only American magazine devoted to the science of Anthropology in all of its branches is THE AMERICAN ANTHROPOLOGIST, published at the National Capital. This journal has just begun its *ninth* year of increasing usefulness. Instead of being issued quarterly at Three Dollars a year, as formerly, it will hereafter be published *monthly* at *Two Dollars* per annum, but the number of pages comprising the volume will not be diminished.

No magazine ever published on the Western continent is such a storehouse of authentic information concerning ARCHEOLOGY, ETHNOLOGY, FOLK-LORE, TECHNOLOGY, SOCIOLOGY, HISTORY, SOMATOLOGY, PSYCHOLOGY, PHILOSOPHY, and PHILOLOGY. Its contributions to our knowledge of these subjects, especially in so far as they relate to the **American Indians**, past and present, are of world-wide authority. Its contributors are America's foremost scholars.

Is *your* name on the subscription list of the ANTHROPOLOGIST? If not, it should be. No one interested in anthropology in any of its branches can afford to be without it. *Subscribe today*; the new volume begins with the January number.

A bibliography of the anthropologic literature of the world is one of its futures.

Handsomely Printed—Abundantly Illustrated.

Published Monthly—Two Dollars a Year.

Volume IX Begins with January, 1896.

ADDRESS: **THE AMERICAN ANTHROPOLOGIST,**  
1804 Columbia Road, Washington, D. C.

## THE REASON WHY

the tourist, traveler, or invalid returns to California is because its attractions are greater than those of Europe. Its climate is equable, its hotels unsurpassed in magnificence. The ease and comfort with which its resorts, as famous as those of the Old World, are reached by that great system of rail and steamship lines, the Southern Pacific, extending from the Gulf to the Pacific, make it readily accessible. Why travel half around the world, to Switzerland, for instance, when the scenery in the Yosemite and other portions of the State is so much grander, and when its valleys are likened to a vast bed of roses, varied with every hue and color? There is no portion of the Alps that surpasses the magnificent and awe-inspiring Sierras. There can be no extravagant description of these beauties of nature. The Bay of Naples, in all its loveliness, is not a whit more beautiful than many resorts on the Pacific Coast. See the wonders of your own land first, and be able to know whereof you speak. If you desire information about its health and pleasure resorts, its scenery, routes, or ticket rates, apply to any representative of the Southern Pacific for free illustrated pamphlets, maps, and time tables. For additional information call or write to S. F. B. Mousk, G. P. A., Southern Pacific Company, New Orleans, La.



TO

**ST PAUL**

**BEST LINE  
CHICAGO OR ST. LOUIS**

**MINNEAPOLIS**



**THE BEST ROUTE**

TO CALIFORNIA,  
PACIFIC COAST,  
PUGET SOUND,  
OR 

✦ POINTS IN THE GREAT NORTHWEST ✦

IS VIA THE

**UNION PACIFIC**

"THE OVERLAND ROUTE,"

From either KANSAS CITY, LEAVENWORTH, ST. JOSEPH, COUNCIL BLUFFS,  
OMAHA, or SIOUX CITY.

The Great Merits of this line are Pullman Palace Sleeping Cars, Buffet Library and Smoking Cars, Pullman Dining Cars, Pullman Tourist Sleepers, Elegant Day Coaches, Union Depots, Fast Time. . . . .

**PULLMAN DINING CARS** are run daily between Council Bluffs and Denver, Council Bluffs and Portland, and San Francisco, Kansas City and Denver.

**PULLMAN TOURIST SLEEPERS** run on the Union Pacific and are almost equal for comfort and convenience to the First-Class Pullman Sleeper.

For more complete information relative to this line, time of travel, pamphlets descriptive of the country traversed, etc., call on your nearest ticket agent, any agent of this system, or address

**R. TENHROECK**, General Eastern Agent, 387 Broadway, New York City.

**E. DICKINSON**, Gen'l Manager,      **E. L. LOMAX**, Gen'l Pass. and Ticket Agent,  
Omaha, Nebraska.



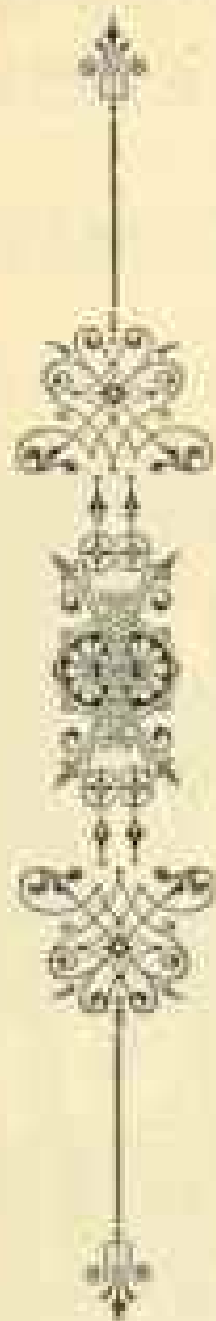
A GREAT RAILWAY



The Chicago, Milwaukee and . . .  
St. Paul Railway Co.



OWNS AND OPERATES 6,169 MILES OF ROAD.



IT operates its own Sleeping Cars and Dining Cars.

It traverses the best portions of the States of Illinois, Wisconsin, Northern Michigan, Iowa, Missouri, Minnesota, South and North Dakota.

Its Sleeping and Dining Car service is first-class in every respect.

It runs vestibuled, steam-heated and electric-lighted trains.

It has the absolute block system.

It uses all modern appliances for the comfort and safety of its patrons.

Its train employes are civil and obliging.

It tries to give each passenger "value received" for his money, and

Its General Passenger Agent asks every man, woman and child to buy tickets over the Chicago, Milwaukee and St. Paul Railway—for it is A Great Railway.

For Maps and Time Tables and any desired information, free of cost.

Address—

GEO. H. HEAFFORD,

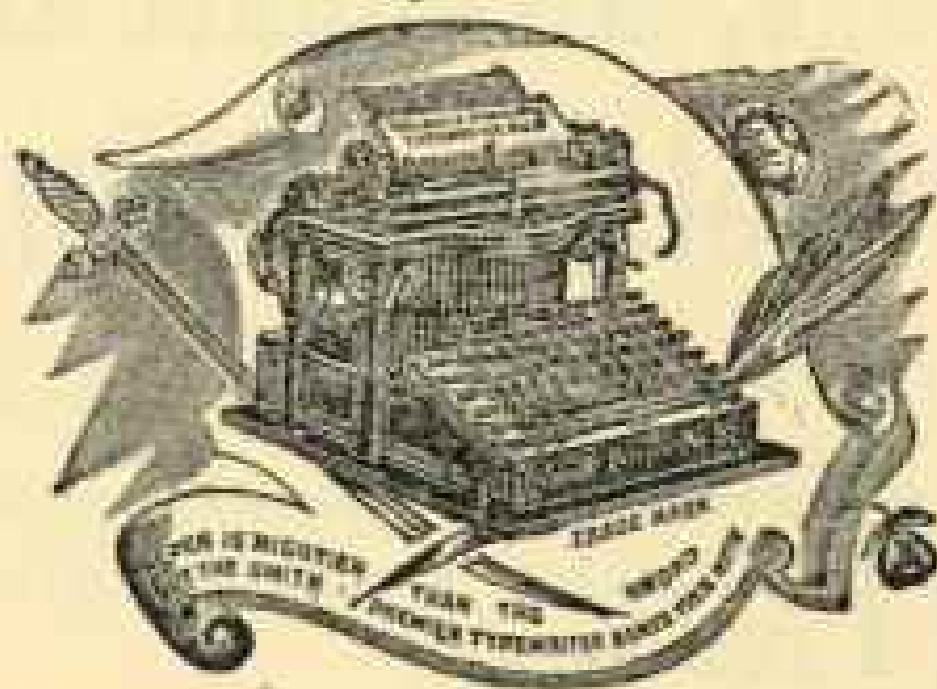
General Passenger Agent, Chicago, Ill.



"IMPROVEMENT THE ORDER OF THE AGE."

# THREE NEW MODEL SMITH PREMIER TYPEWRITERS Nos. 2, 3 AND 4.

Great  
Progress in  
Mechanical  
Art.



Many  
Improvements  
Heretofore  
Overlooked by  
Other  
Manufacturers

**DURABILITY** THE FIRST CONSIDERATION.

Send for Catalogue. Machines sent you for trial.

**THE SMITH PREMIER TYPEWRITER COMPANY,**  
MAIN OFFICE: SYRACUSE, N. Y.

BRANCHES: 1416 F STREET, WASHINGTON, D. C., AND 28 OTHER LEADING CITIES.

**CHICAGO  
GREAT  
WESTERN  
RAILWAY**

PROVIDES ITS PATRONS  
PULLMAN PRIVATE COMPARTMENT SLEEPERS  
A LA CARTE DINING CARS  
FREE CHAIR CARS

MAPLE LEAF ROUTE

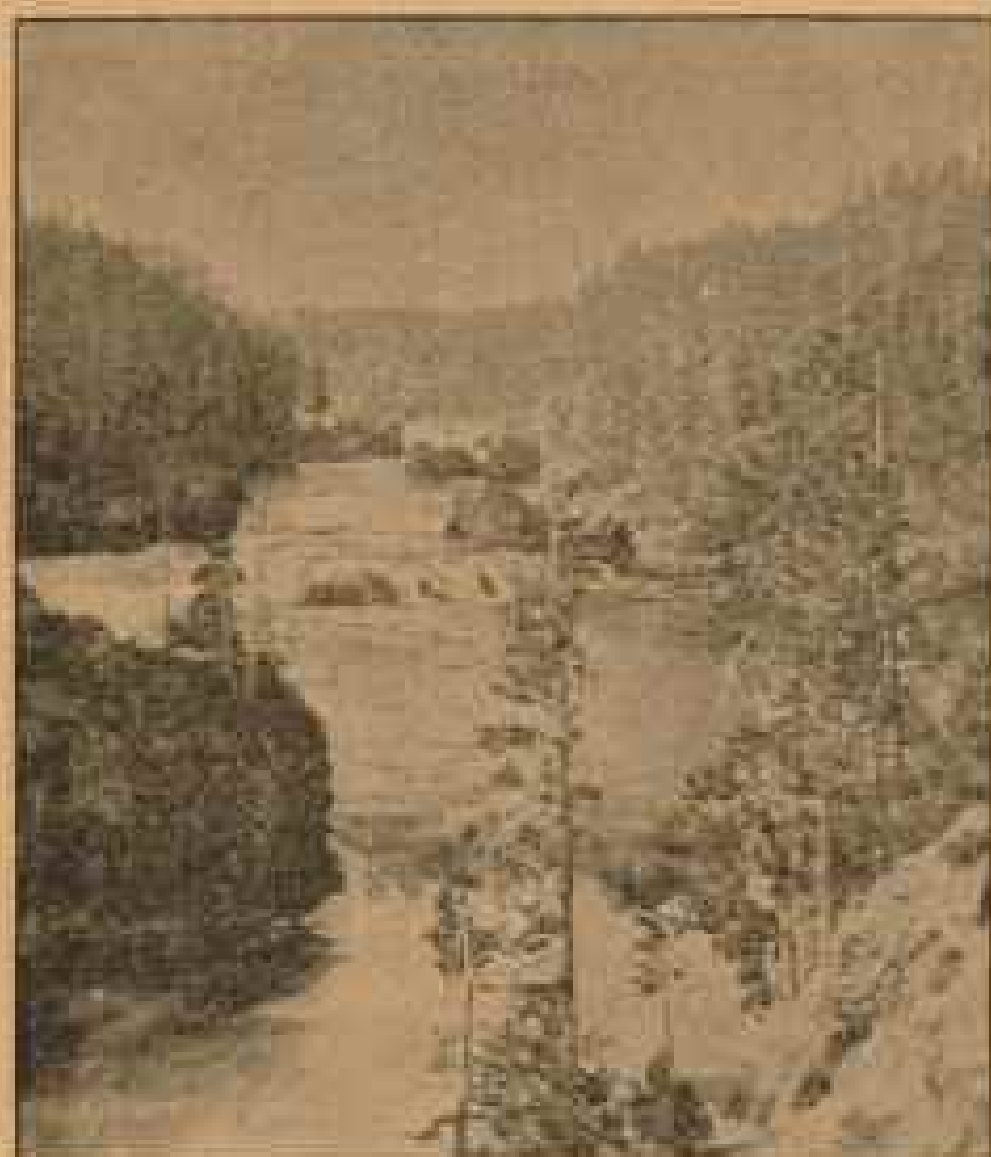
Between  
CHICAGO, DUBUQUE,  
ST. PAUL, MINNEAPOLIS  
DES MOINES, ST. JOSEPH  
AND KANSAS CITY

F. H. LORD - GEN'L. PASSR. & TICKET AGENT - CHICAGO.



**SPEND THE WINTER**  
— IN —  
**CALIFORNIA**

... AS USUAL ...



RAPIDS NEAR UPPER FALL.

But vary the monotony of  
travel by returning  
via the

**SHASTA  
ROUTE**

— AND —

**NORTHERN PACIFIC R. R.**

By so doing you can  
see the

**ORIGINAL OF THIS SCENE.**

It is in the **YELLOWSTONE PARK**, and can be reached on your return from **CALIFORNIA** if you will see that your ticket reads as above. In addition you will see

**MT. SHASTA, MT. HOOD, and MT. TACOMA,**

the Giant Peaks of the Pacific Coast, and pass through Portland, Tacoma, Seattle, Spokane, Helena or Butte, Missoula, Bismarck, Fargo, Minneapolis, and St. Paul.

Send me 6 cents for

**SKETCHES OF WONDERLAND.**

CHAS. S. FEE, Gen. Pass. Agent.

Northern Pacific Railroad.

St. Paul, Minnesota.

Among the Contents of Forthcoming  
Numbers of

# THE NATIONAL GEOGRAPHIC MAGAZINE

WILL BE THE FOLLOWING:

A Winter Voyage through the Straits of Magellan,

BY ADMIRAL R. W. MEADE, U. S. N.;

Egypt and the Recent Expedition to Dongola,

BY COLONEL CHARLES CHAILLÉ-LONG,

LATE OF THE GENERAL STAFF OF THE EGYPTIAN ARMY;

The Negro Republic of Africa and its Homes,

FROM PERSONAL OBSERVATION.

BY MR GEORGE K. FRENCH;

The Physical Features of Lake Superior,

BY DR MARK W. HARRINGTON,

PRESIDENT OF THE UNIVERSITY OF THE STATE OF WASHINGTON;

— AND —

The Utilization of the Vacant Public Lands,

BY JUDGE EMORY F. BEST,

ASSISTANT COMMISSIONER OF THE GENERAL LAND OFFICE.