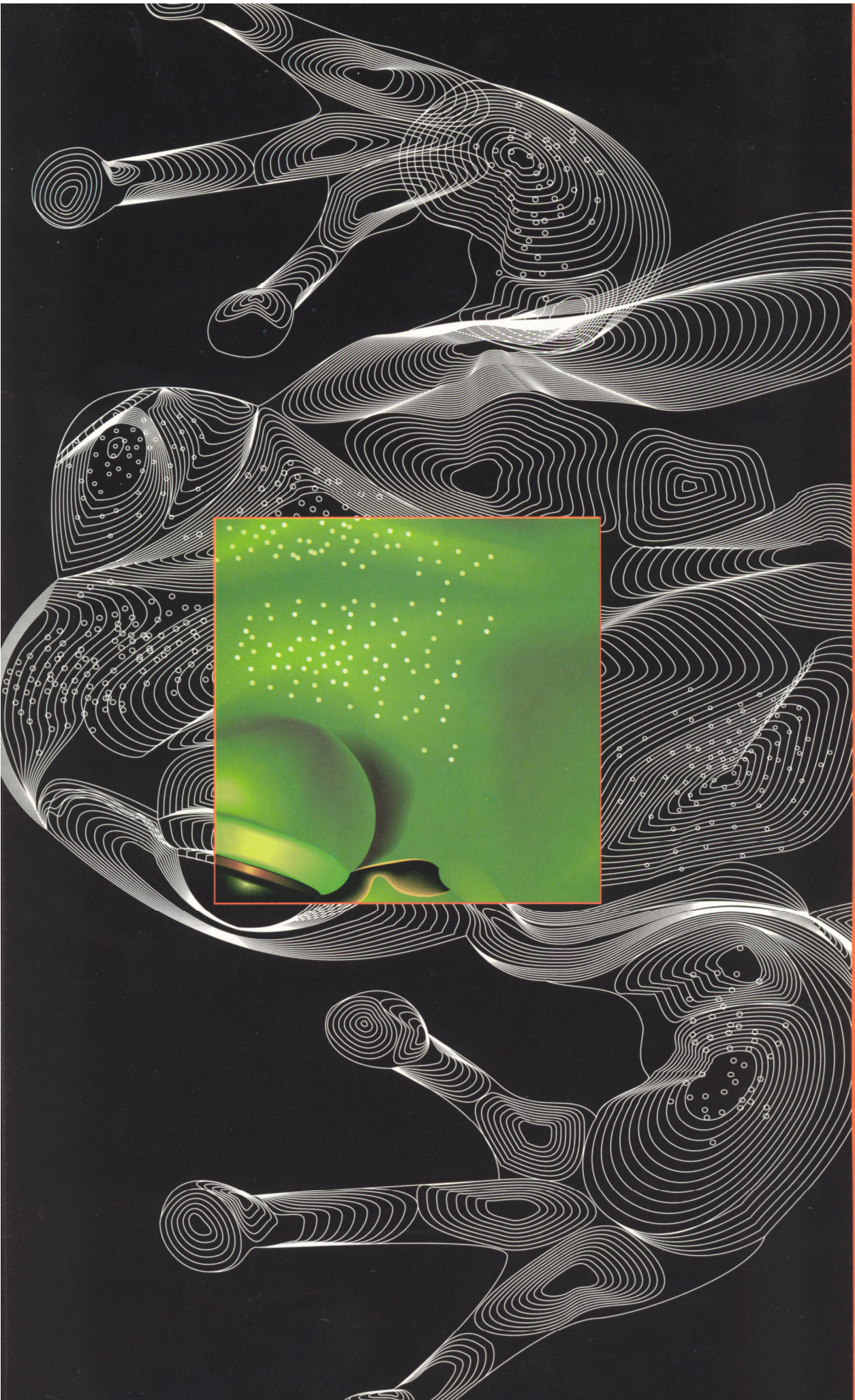


# ANIMAL KINGDOM



**CONTENTS**

INSECTS AND SPIDER .....77

BUTTERFLY .....78

HONEYBEE .....80

GASTROPOD .....83

AMPHIBIANS .....84

FISH .....86

CRUSTACEAN .....90

MOLLUSK .....92

UNIVALVE SHELL .....94

BIVALVE SHELL .....95

REPTILE .....96

TYPES OF JAWS .....98

MAJOR TYPES OF HORNS.....99

MAJOR TYPES OF TUSKS .....99

TYPES OF HOOFS .....99

HORSE .....100

DEER FAMILY.....105

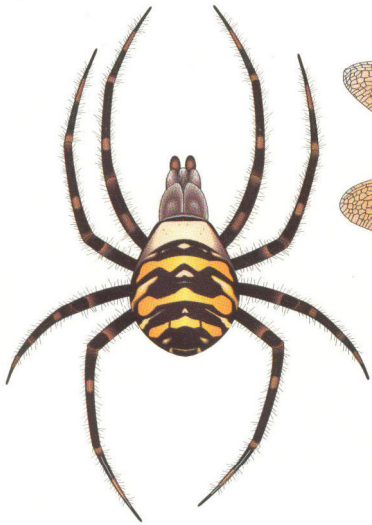
DOG .....106

CAT.....107

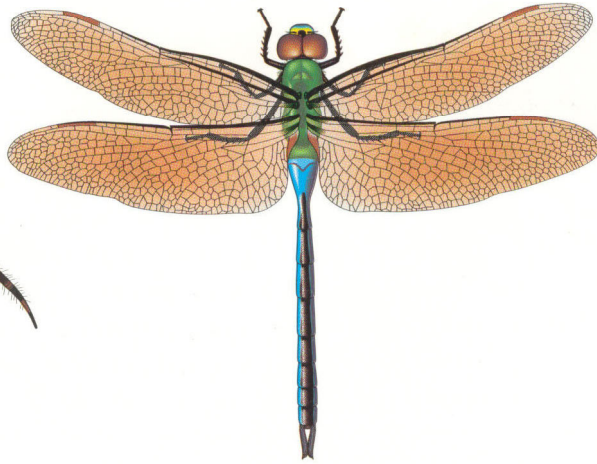
BIRD.....108

BAT .....112

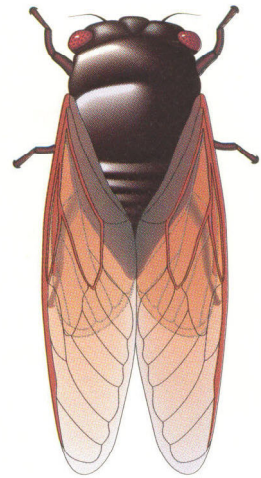
INSECTS AND SPIDER



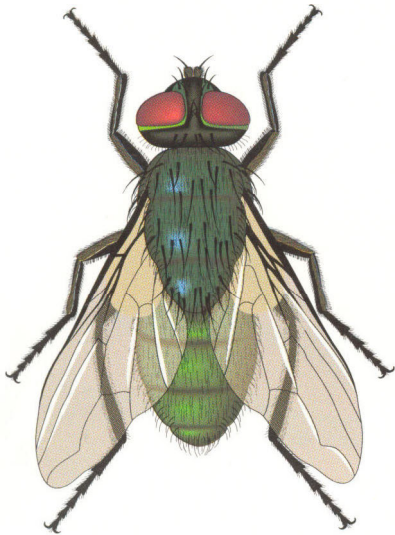
spider



dragonfly



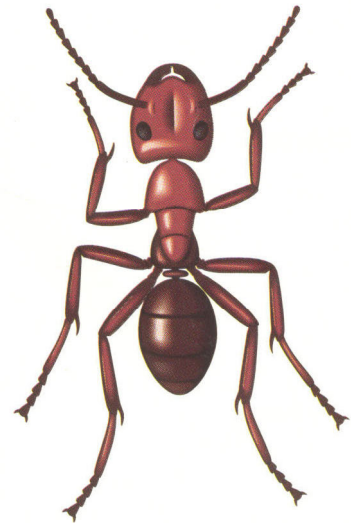
cicada



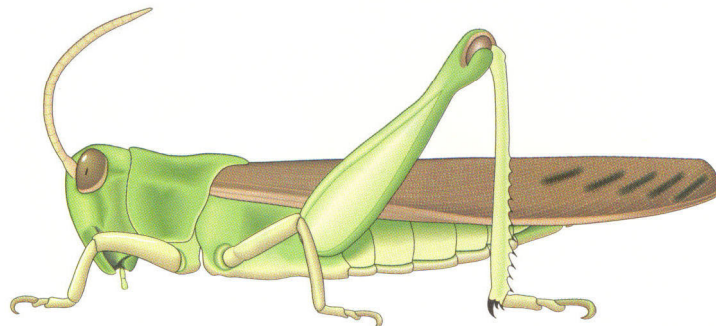
fly



ladybug



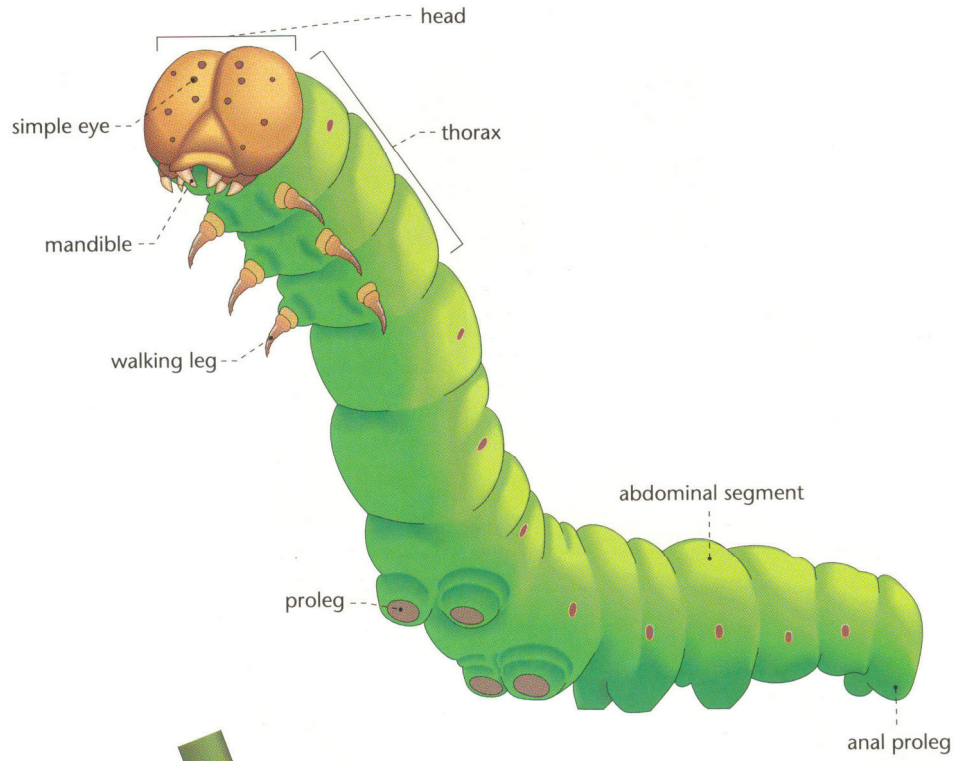
ant



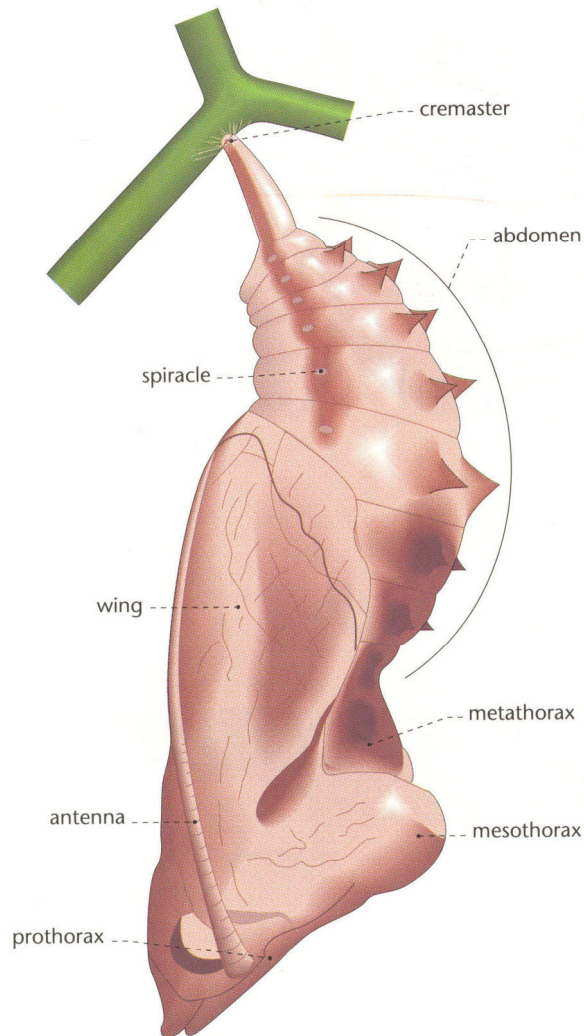
grasshopper

# BUTTERFLY

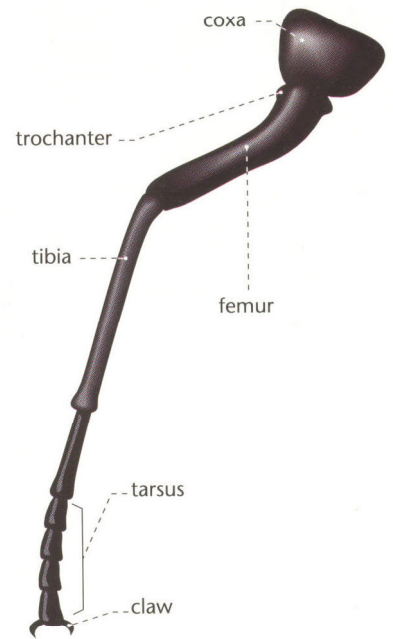
## CATERPILLAR

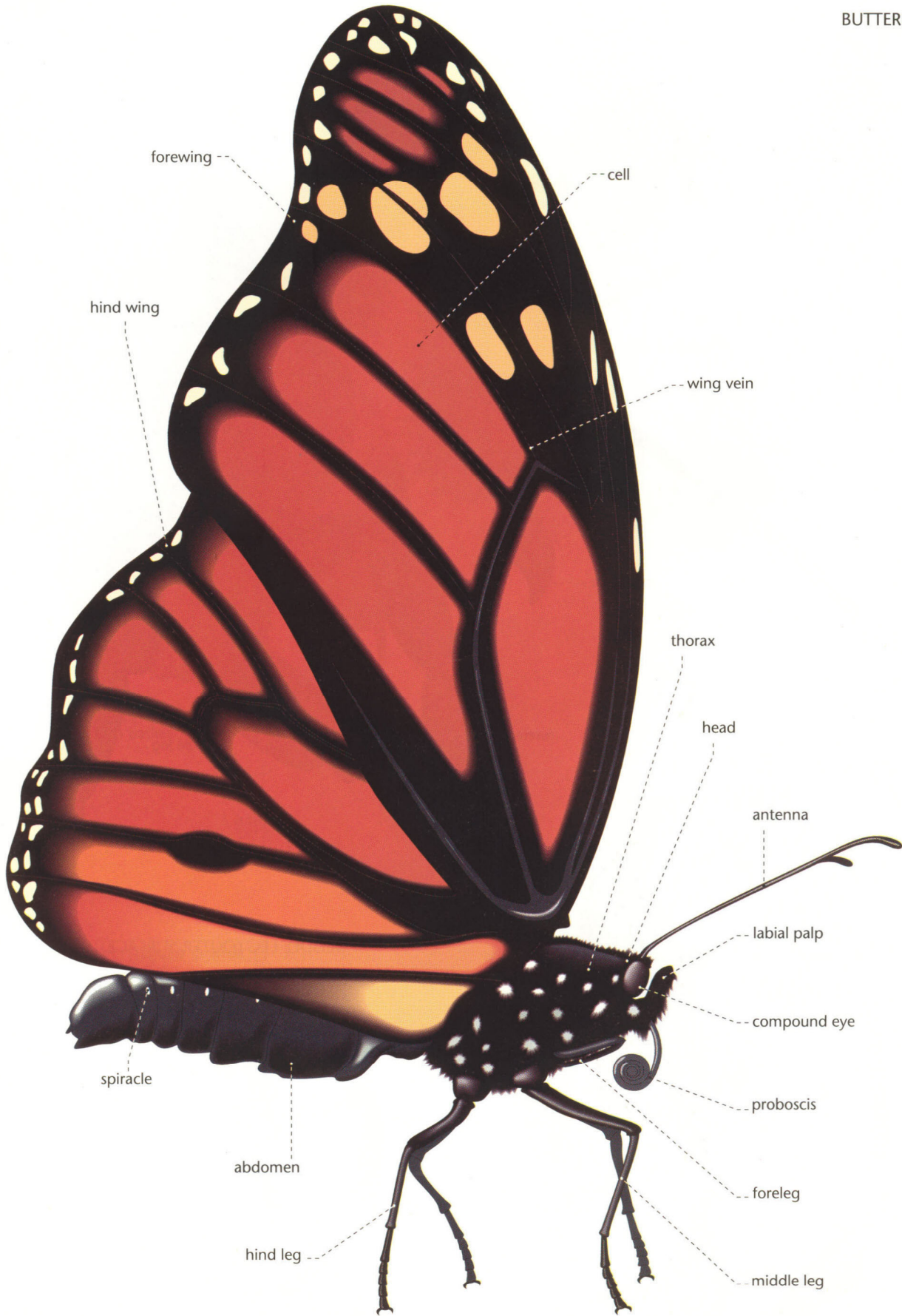


## CHRYSALIS



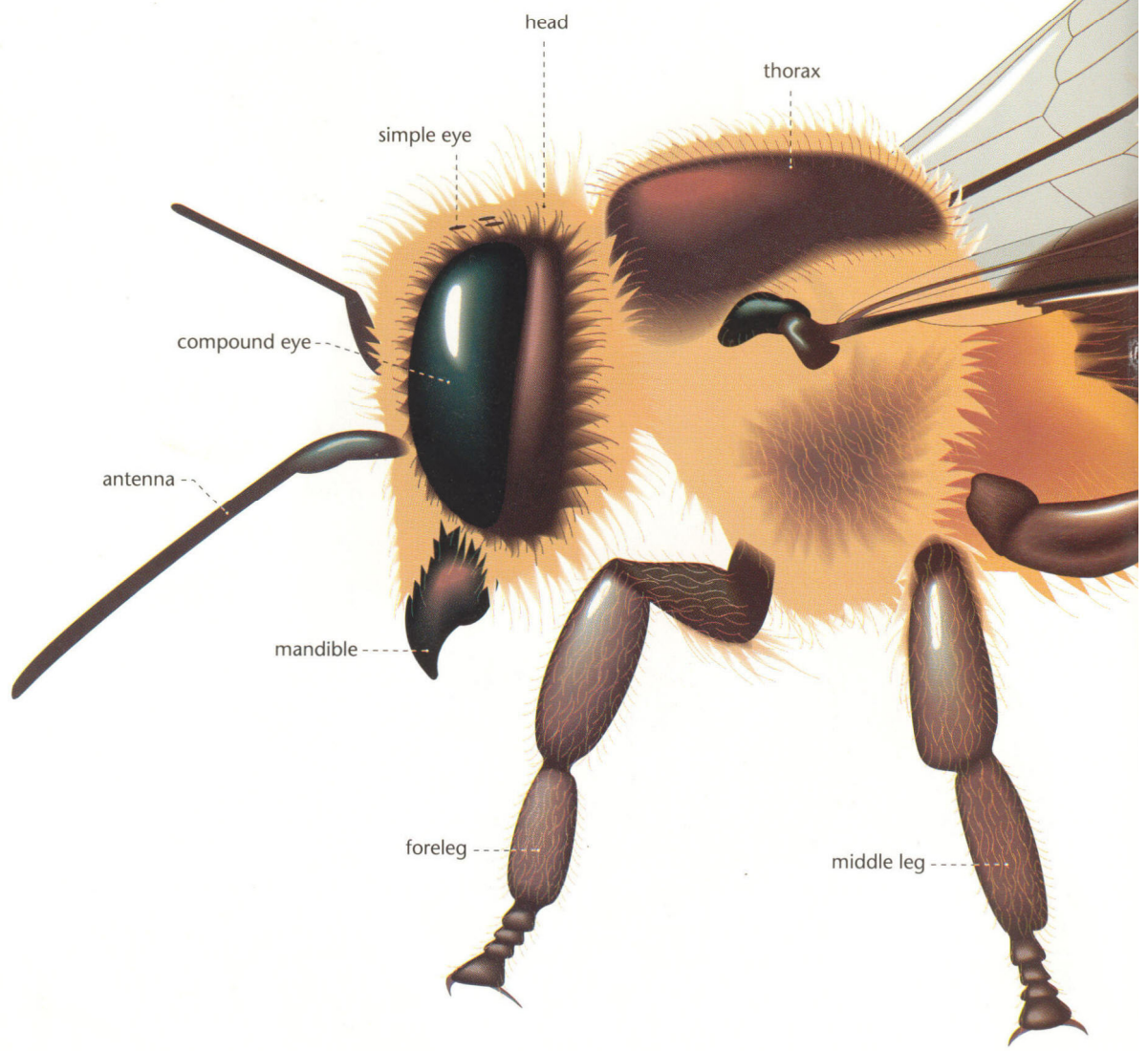
## HIND LEG



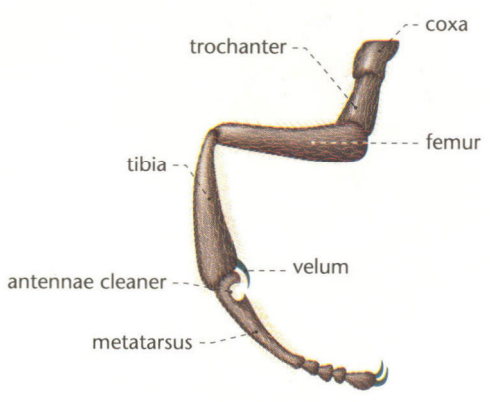


# HONEYBEE

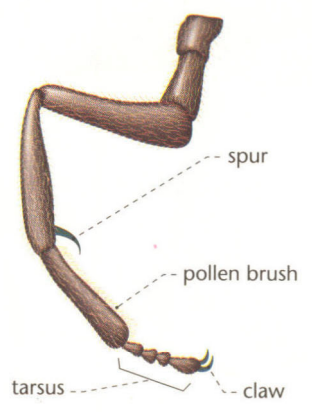
WORKER

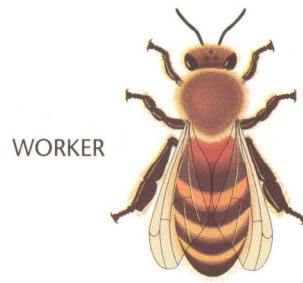
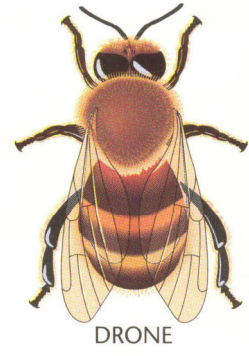
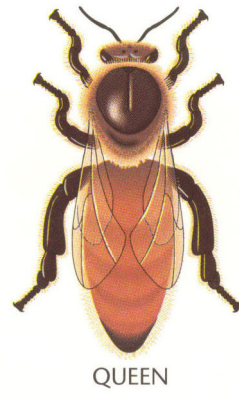
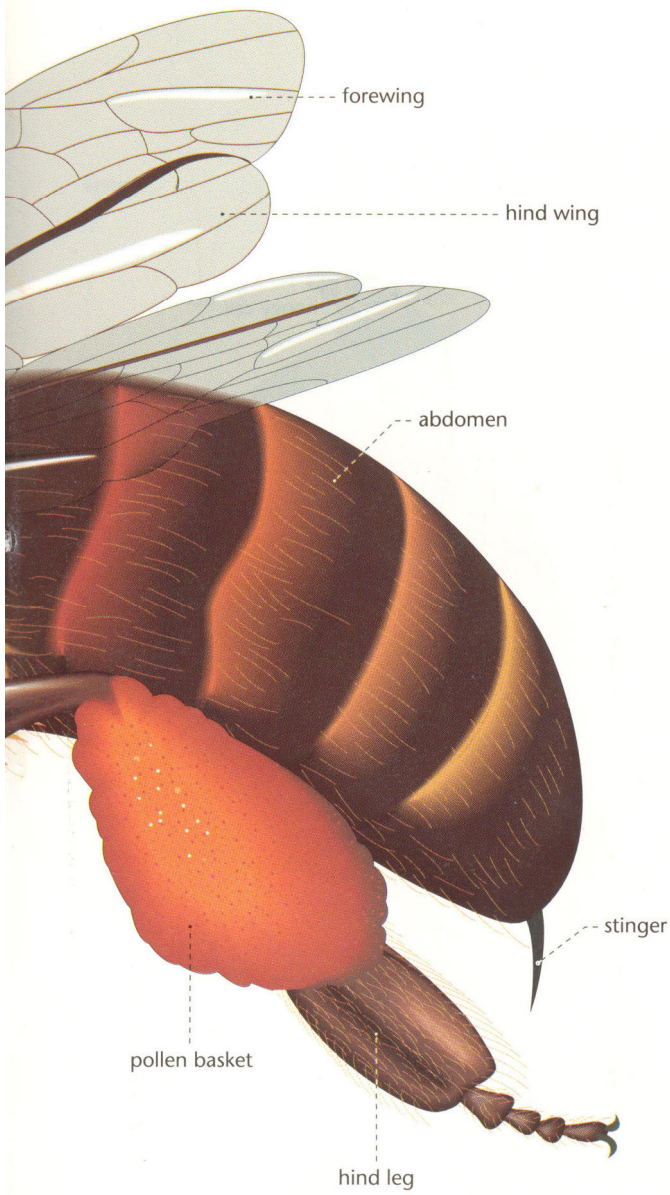


FORELEG (OUTER SURFACE)



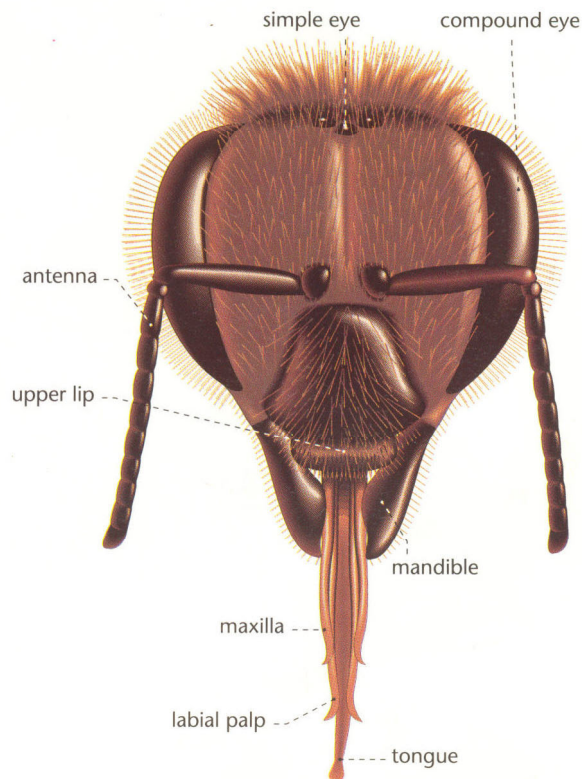
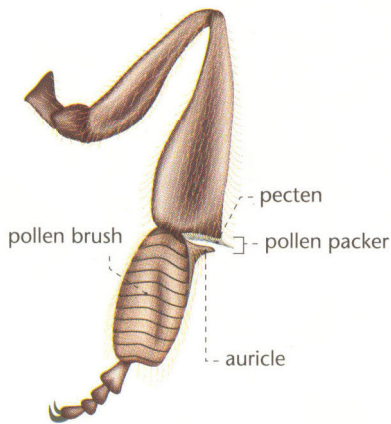
MIDDLE LEG (OUTER SURFACE)





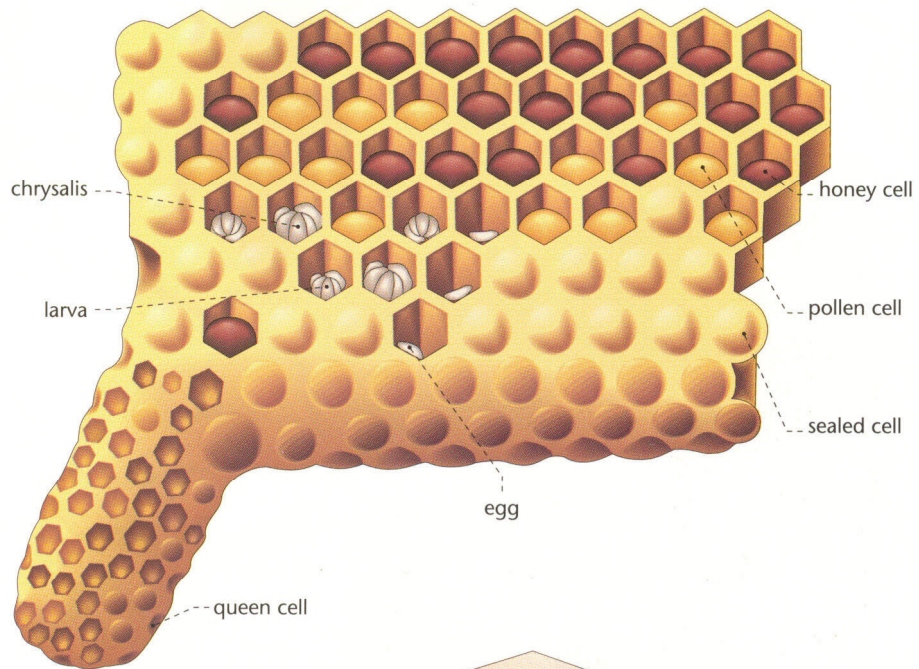
MOUTHPARTS

HIND LEG (INNER SURFACE)

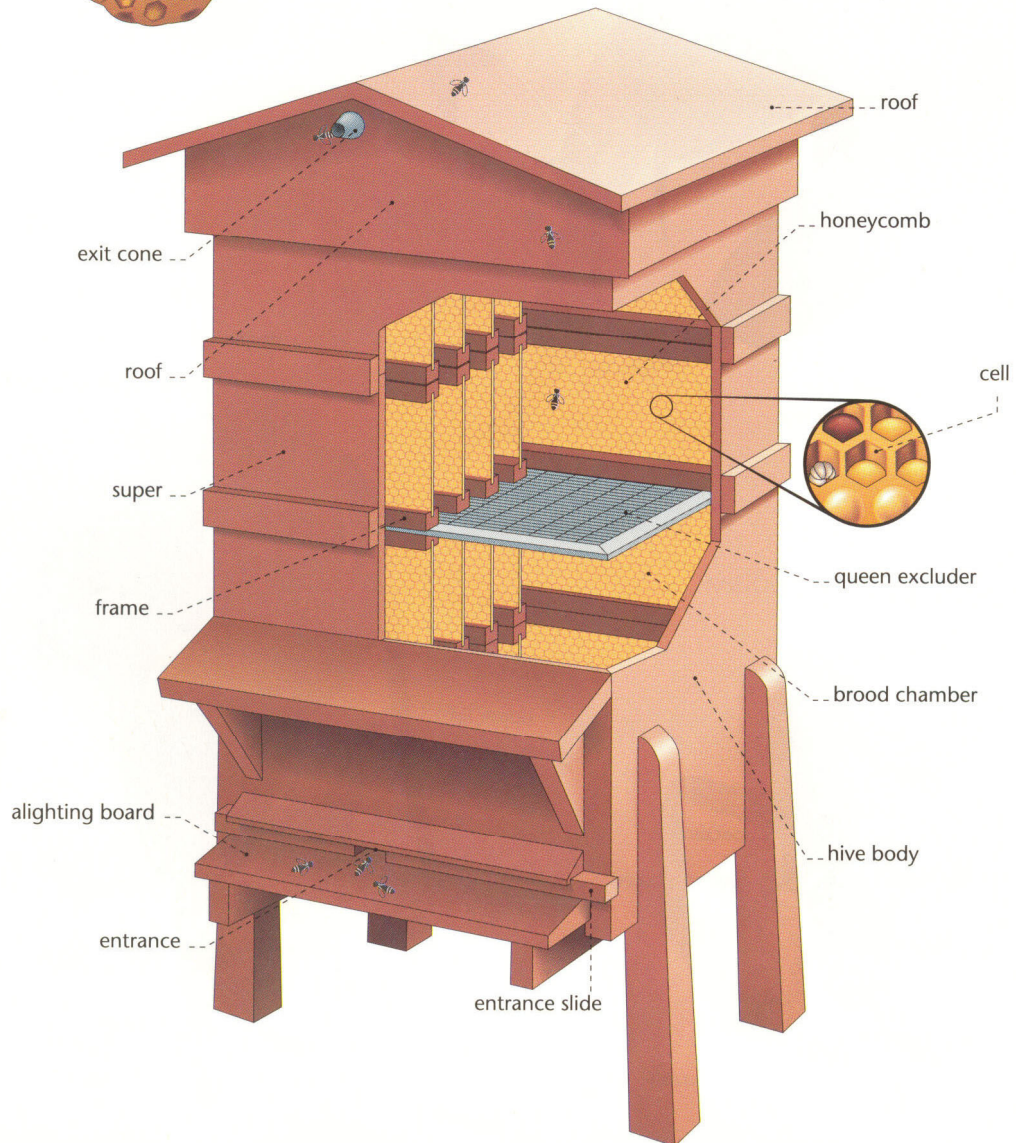


# HONEYBEE

## HONEYCOMB SECTION



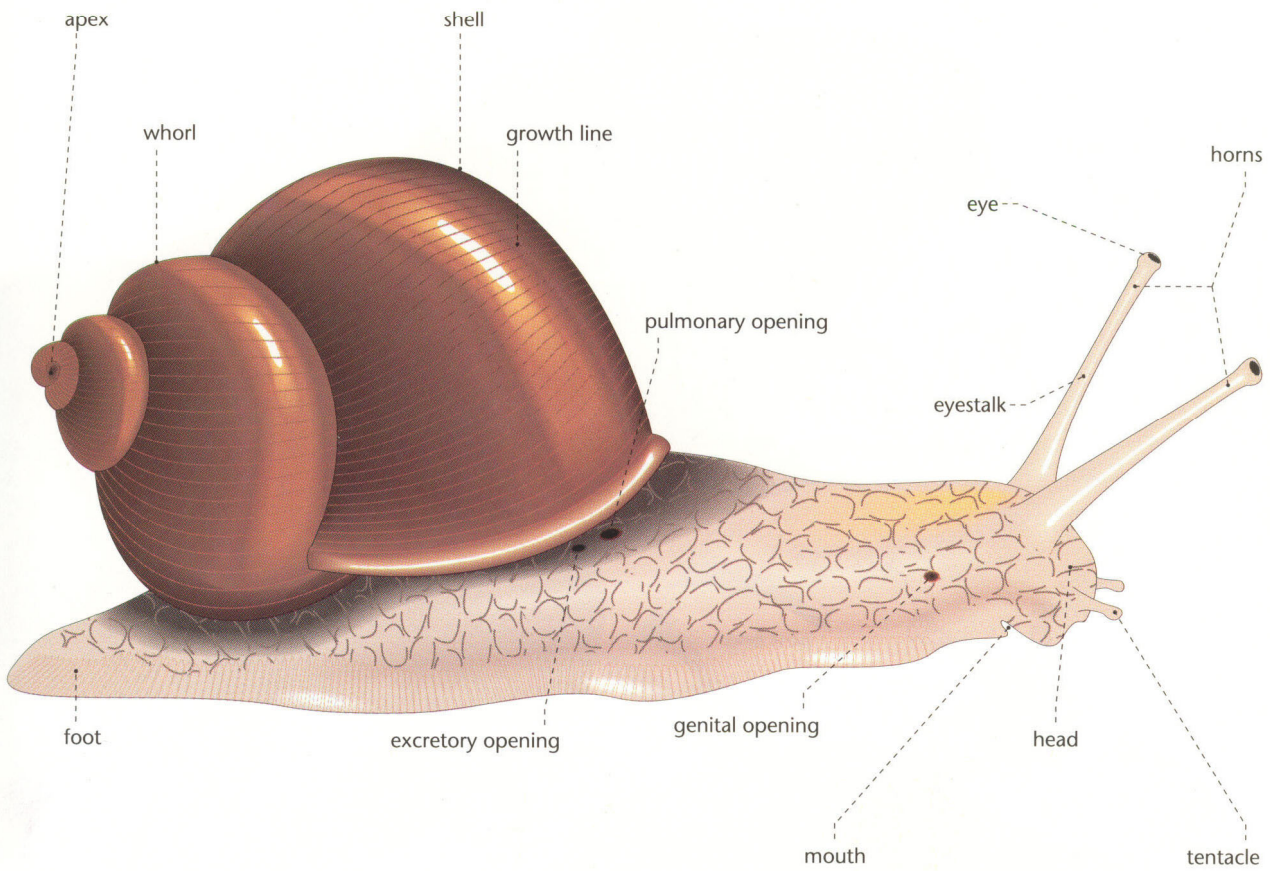
## HIVE





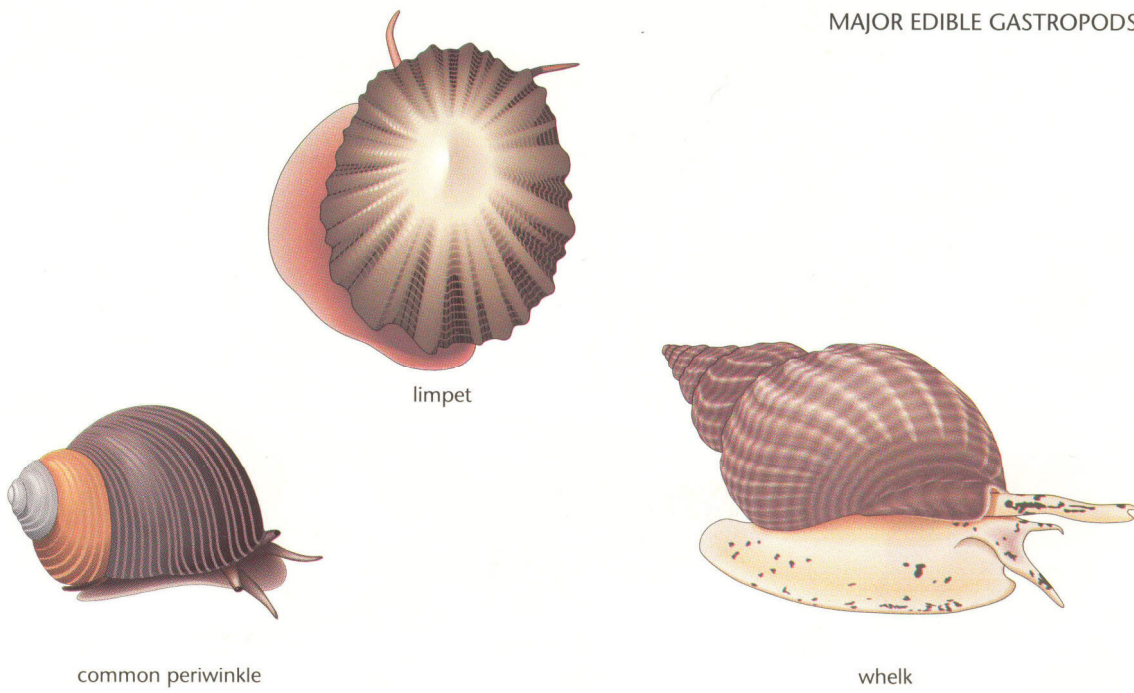
# GASTROPOD

SNAIL



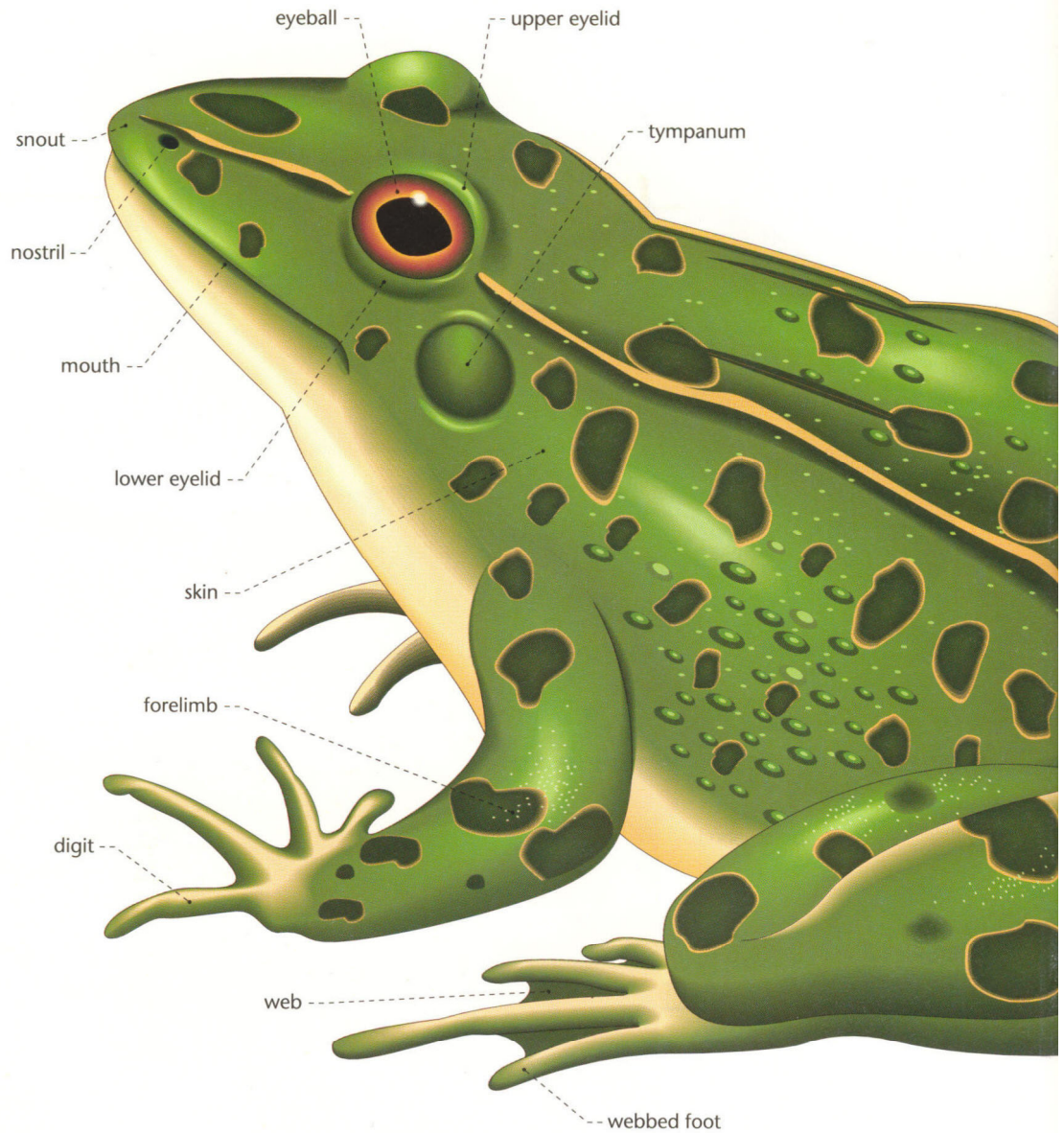
ANIMAL KINGDOM

## MAJOR EDIBLE GASTROPODS



# AMPHIBIANS

## FROG



## LIFE CYCLE OF THE FROG

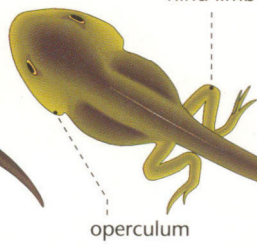
eggs



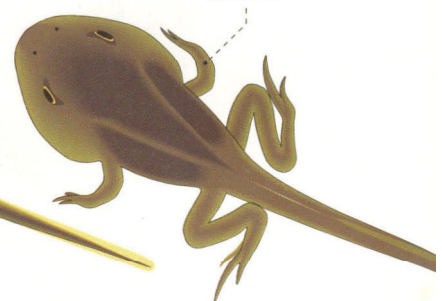
tadpole



hind limb



forelimb



toad

warty skin



tree frog

adhesive disk



hind limb

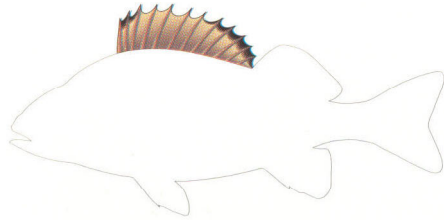


salamander

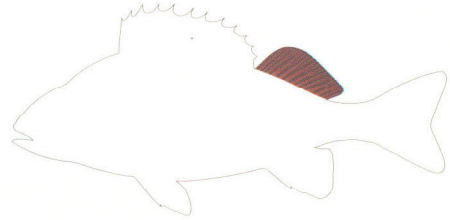


# FISH

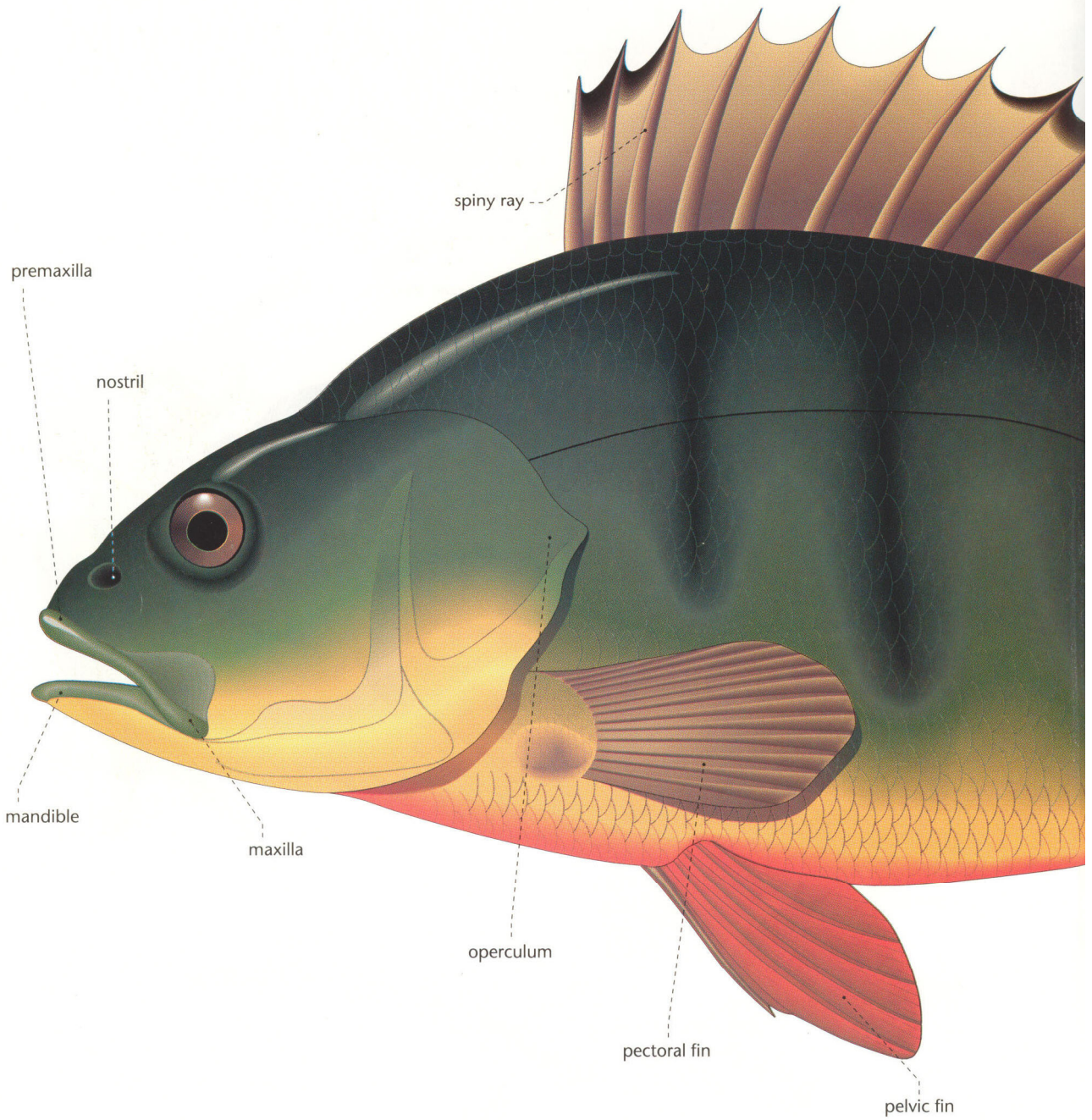
## MORPHOLOGY

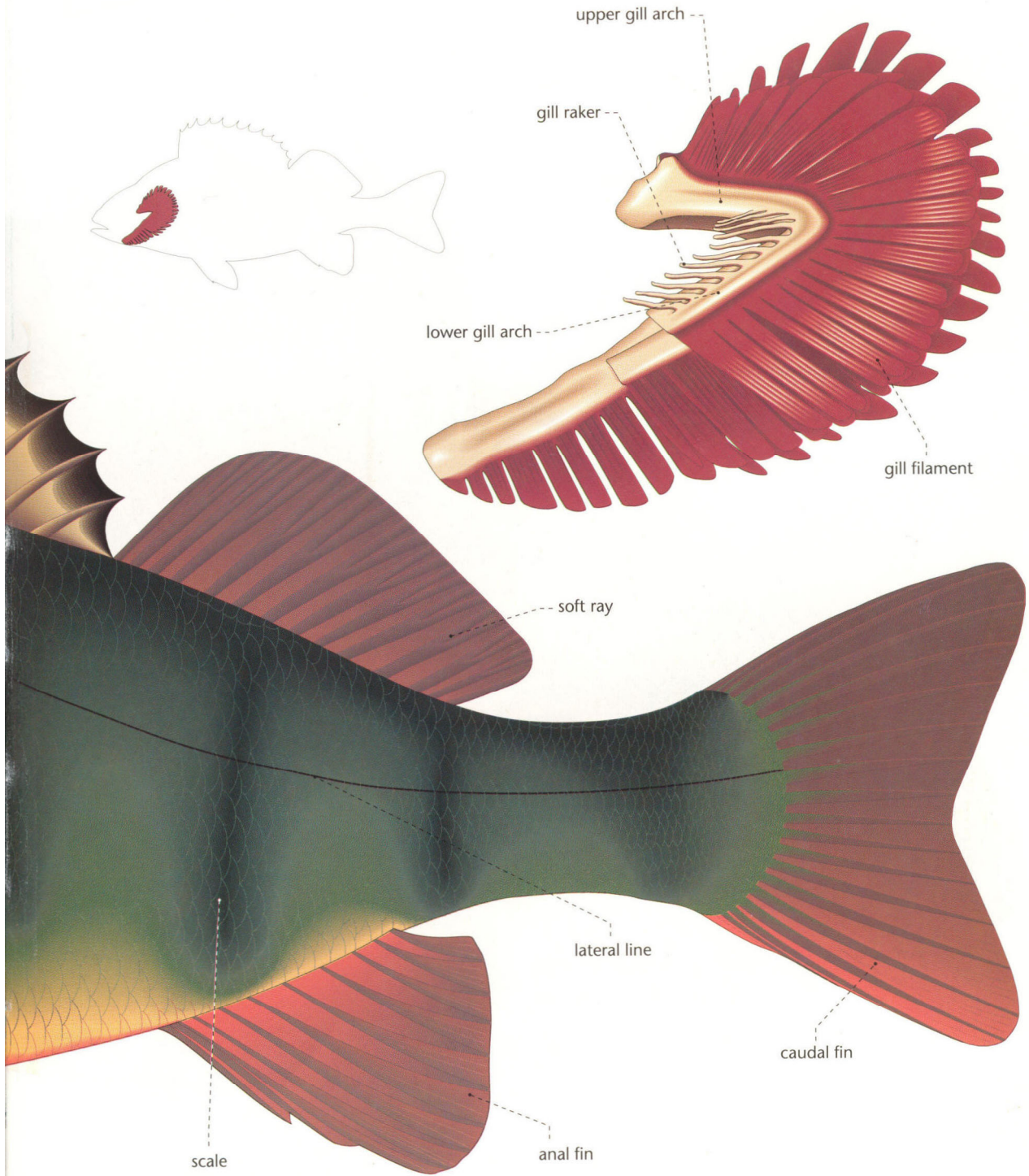


first dorsal fin

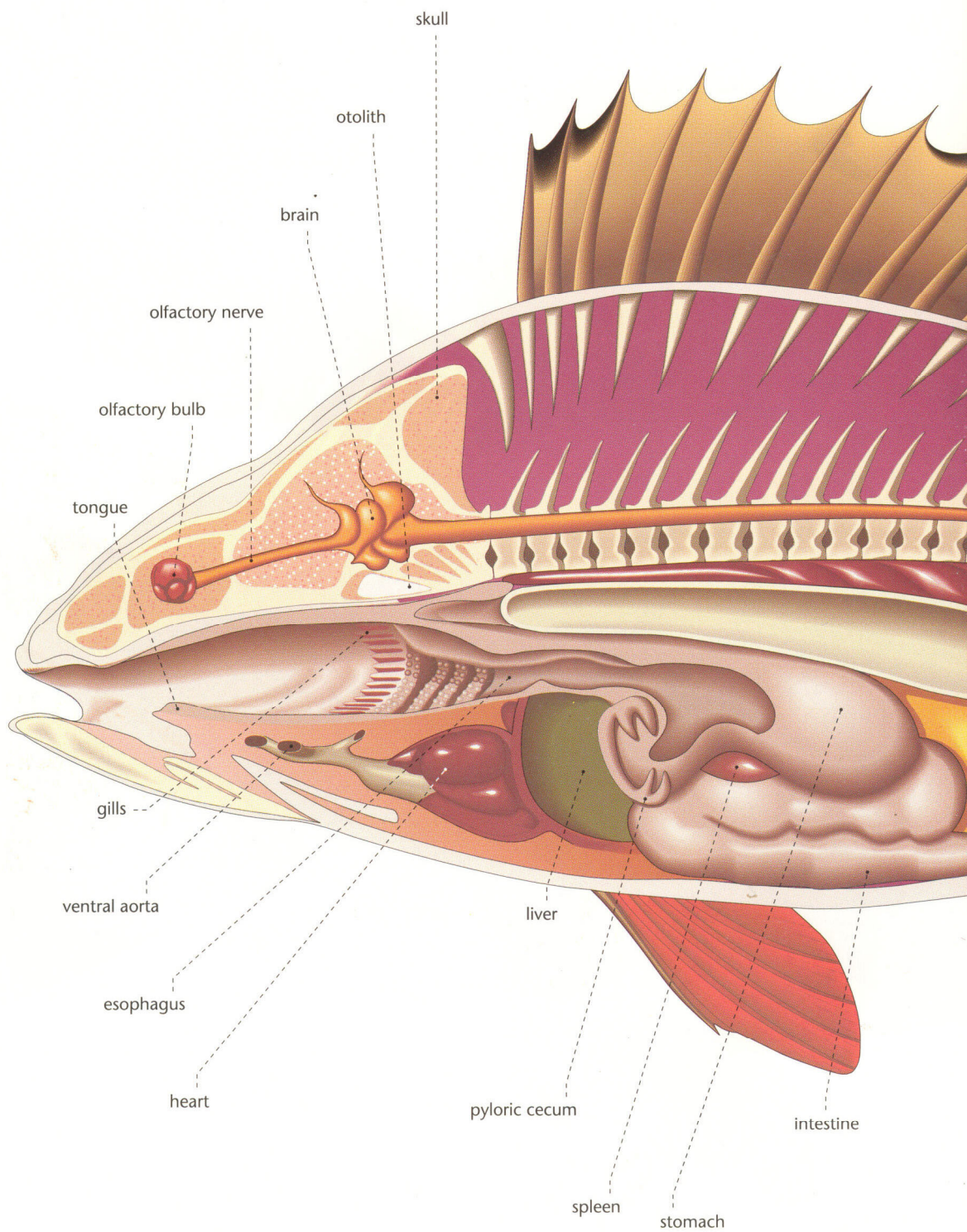


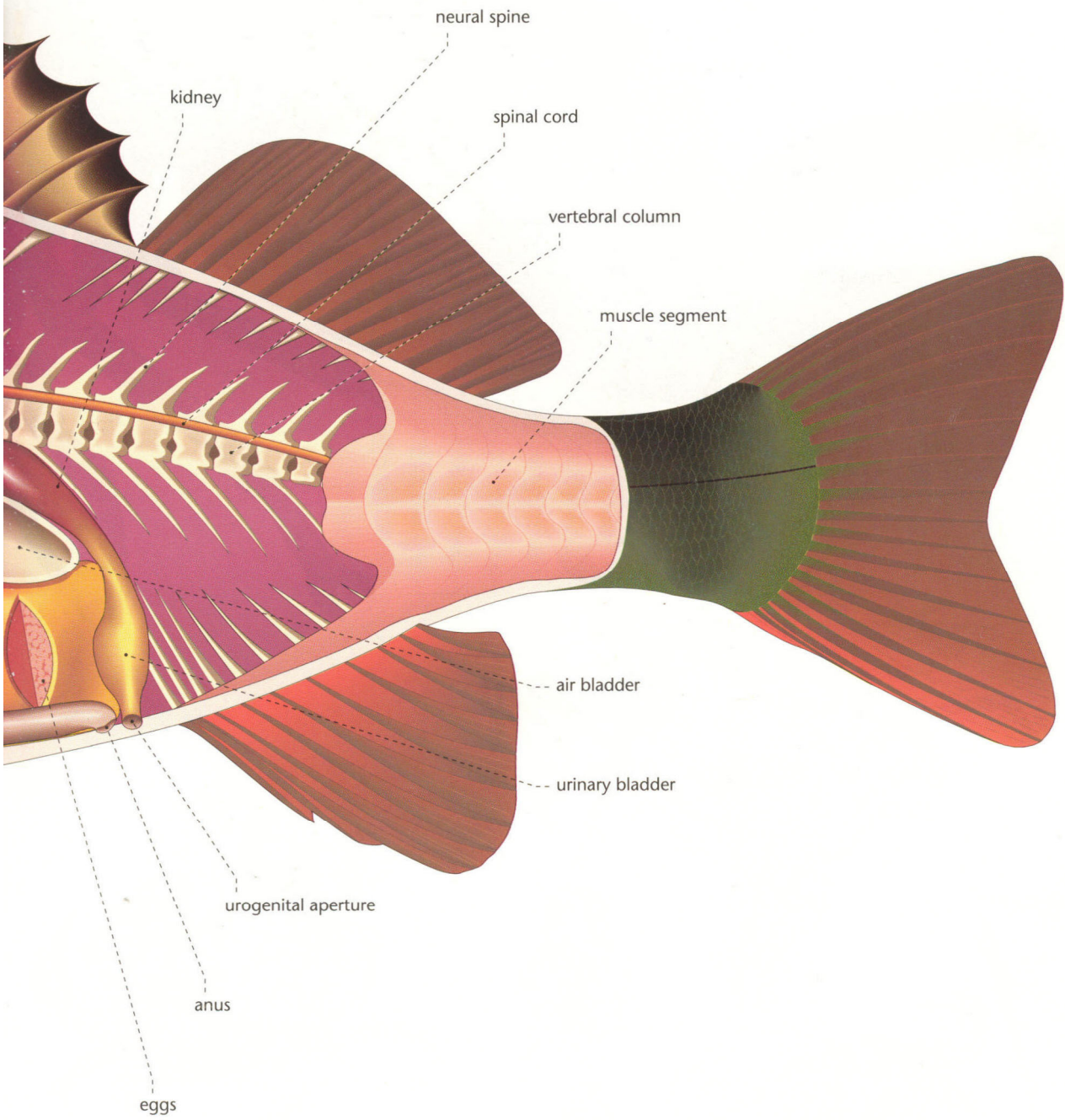
second dorsal fin





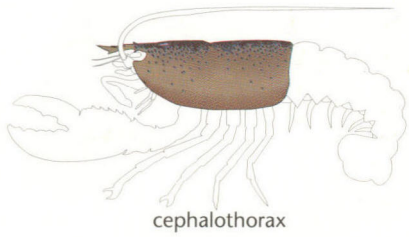
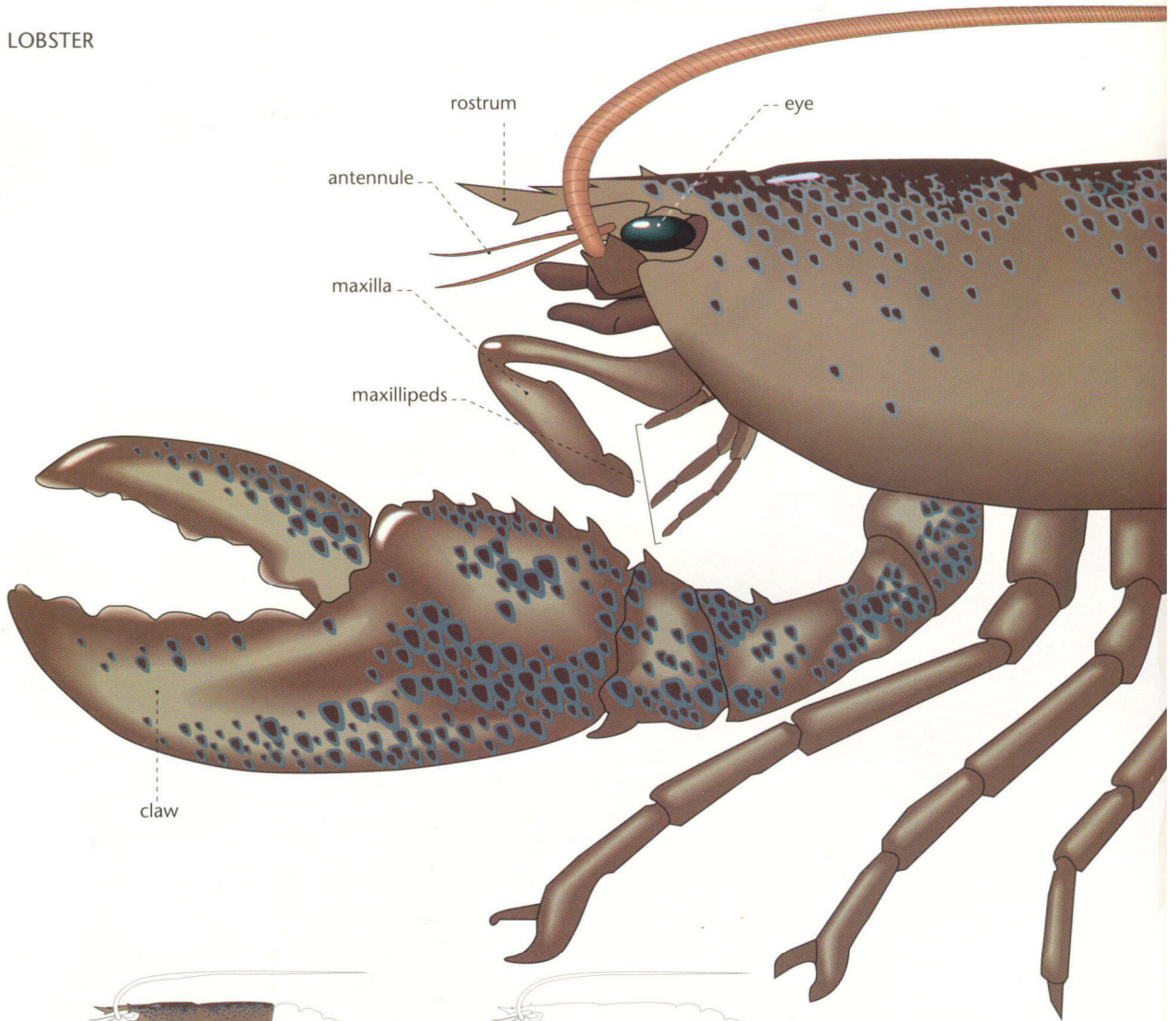
FISH



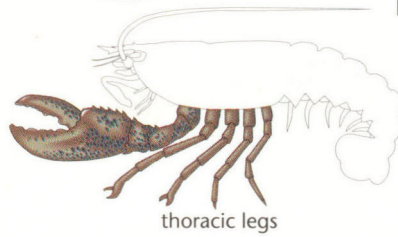


CRUSTACEAN

LOBSTER

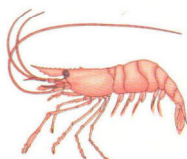


cephalothorax



thoracic legs

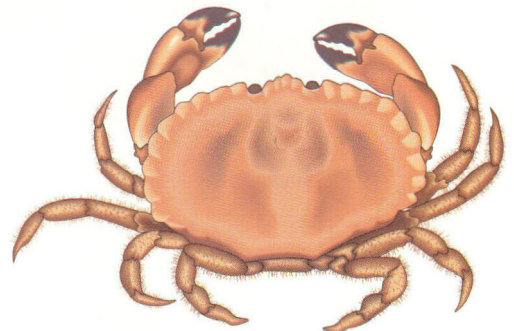
MAJOR EDIBLE CRUSTACEANS



shrimp

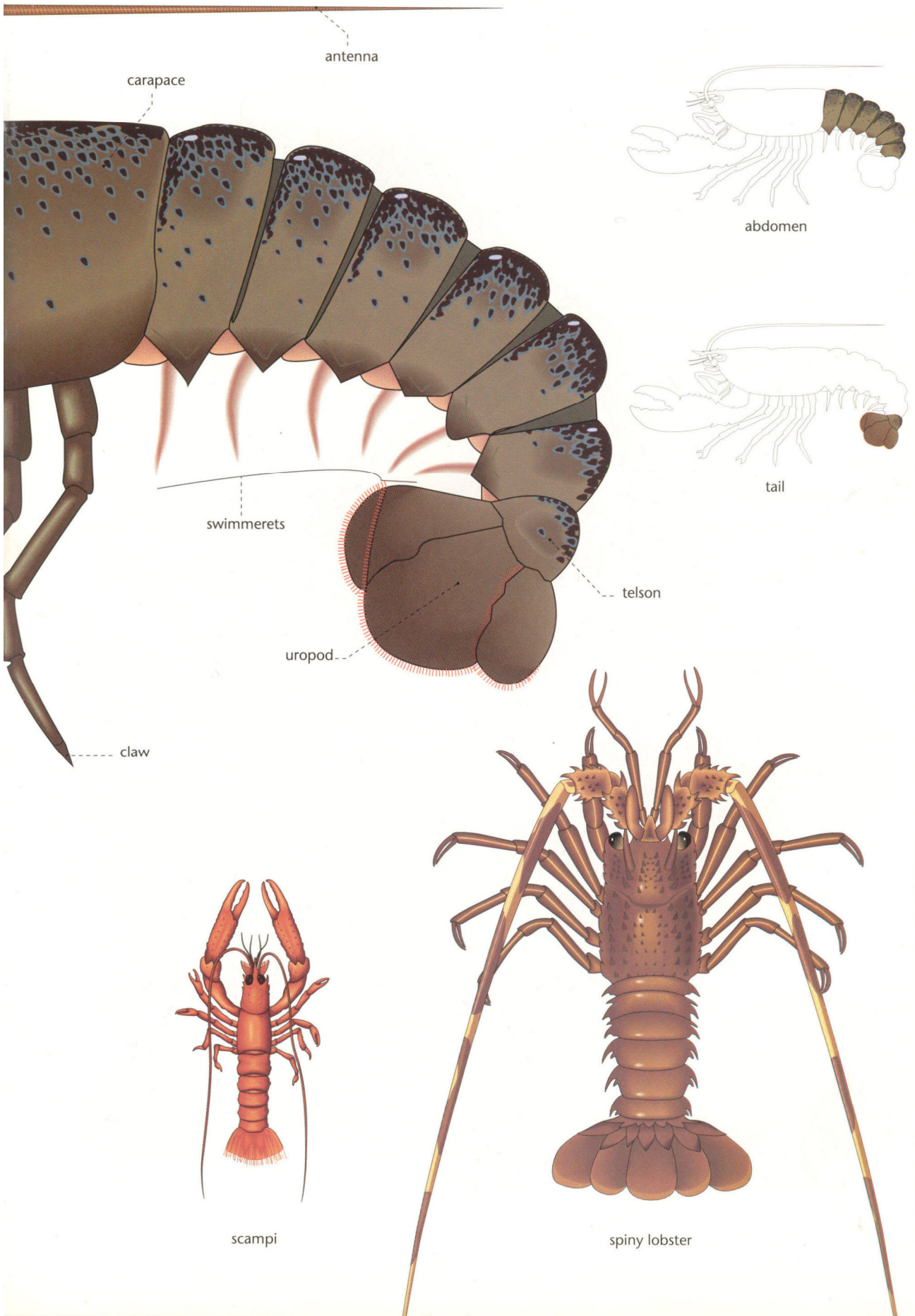


crayfish



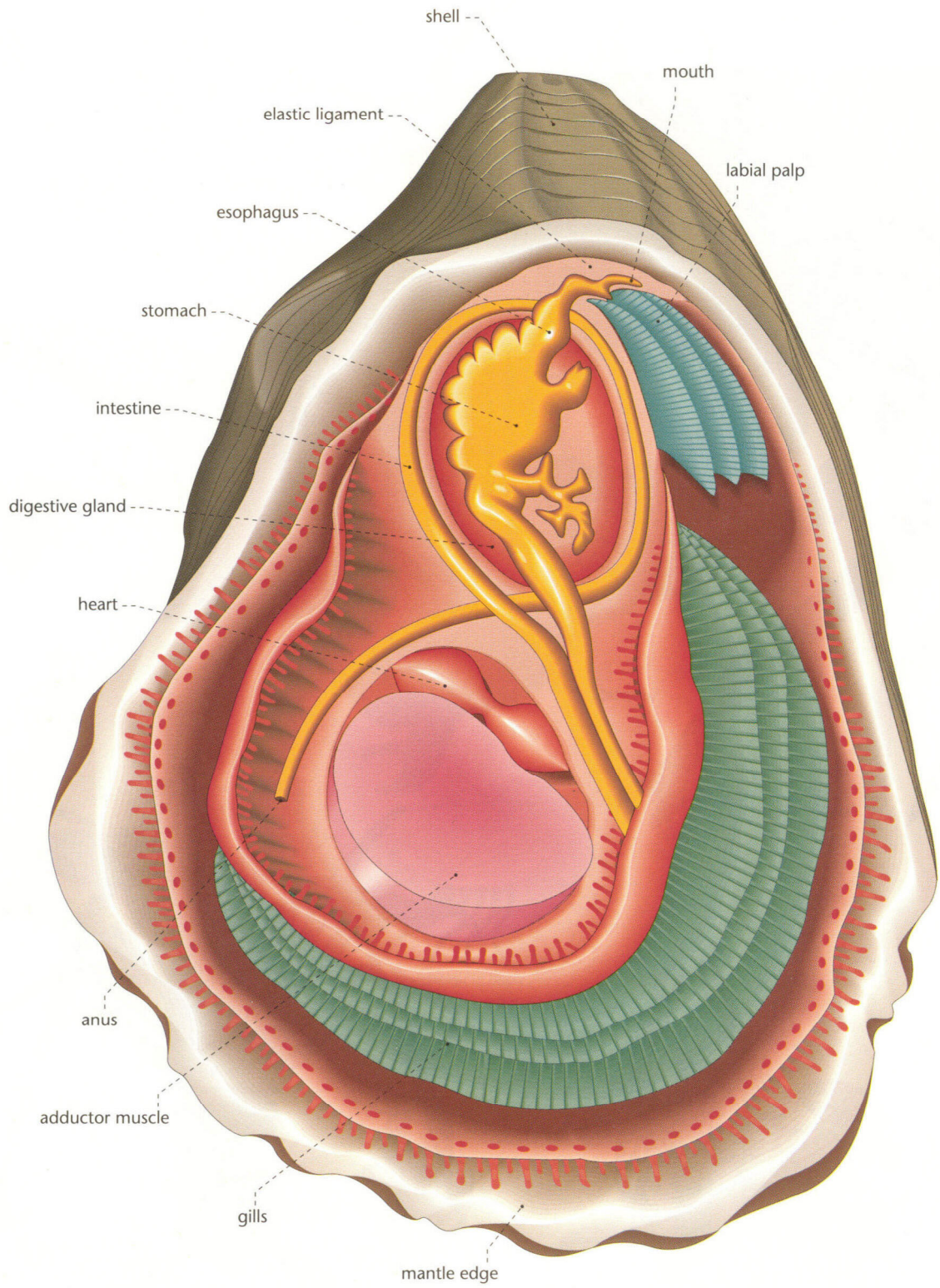
crab





OYSTER

MOLLUSK



MAJOR EDIBLE MOLLUSKS



oyster



soft shell clam



scallop



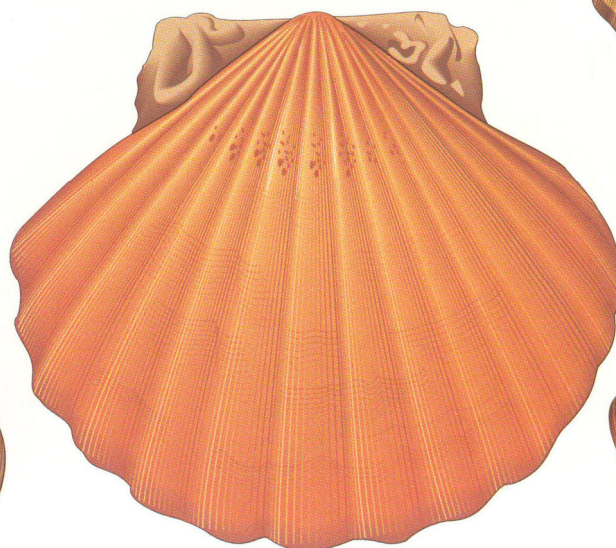
razor clam



blue mussel



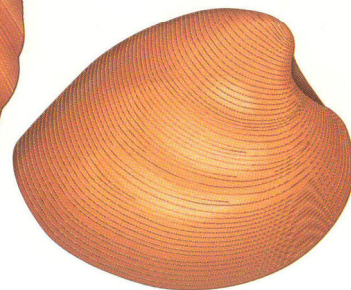
cockle



great scallop

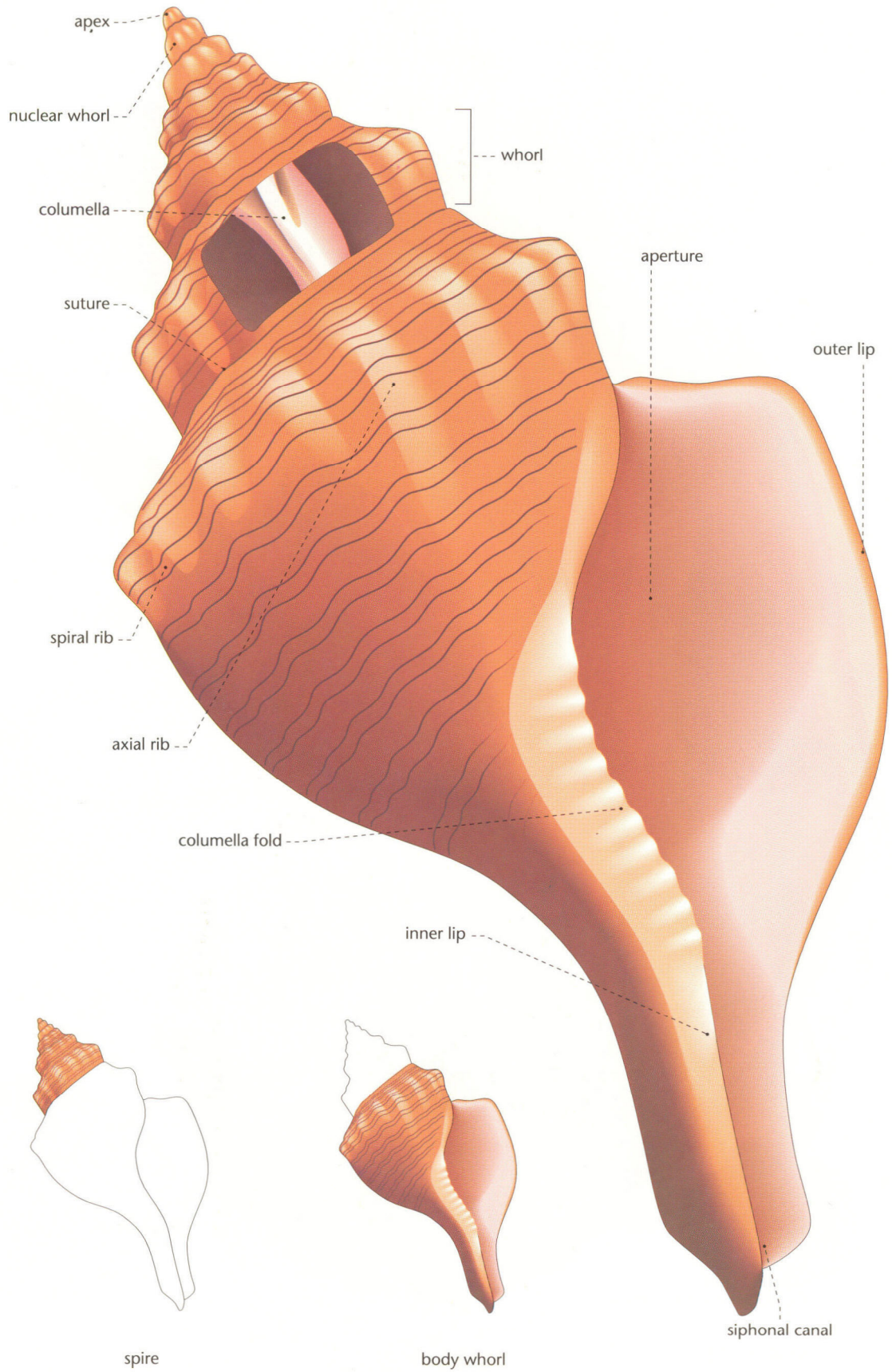


hard shell clam



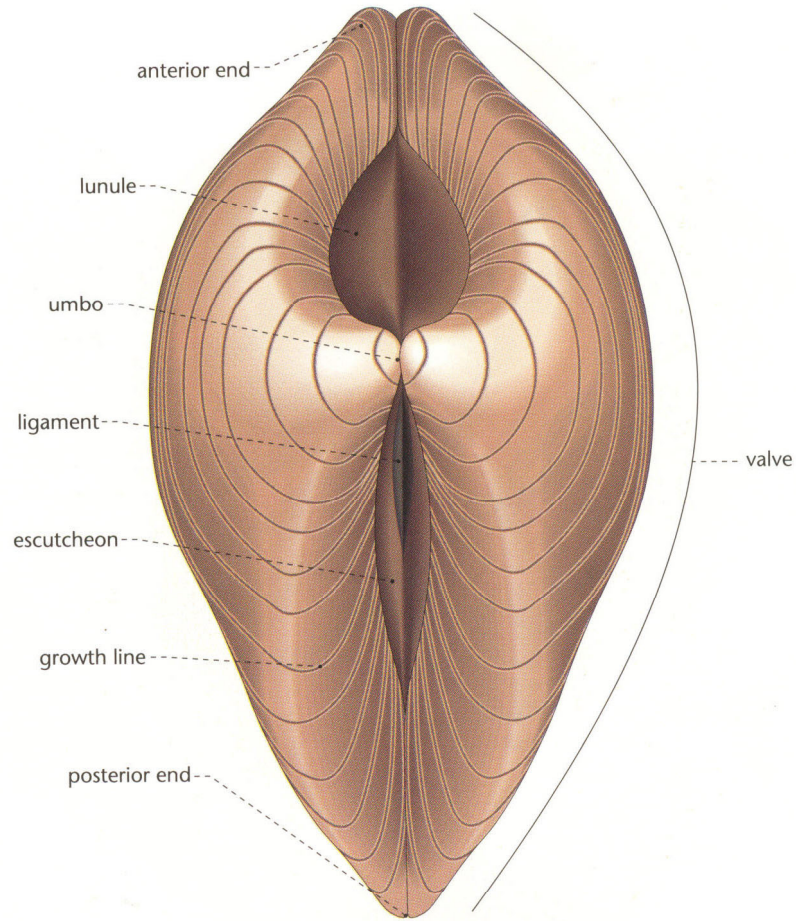
clam

UNIVALVE SHELL

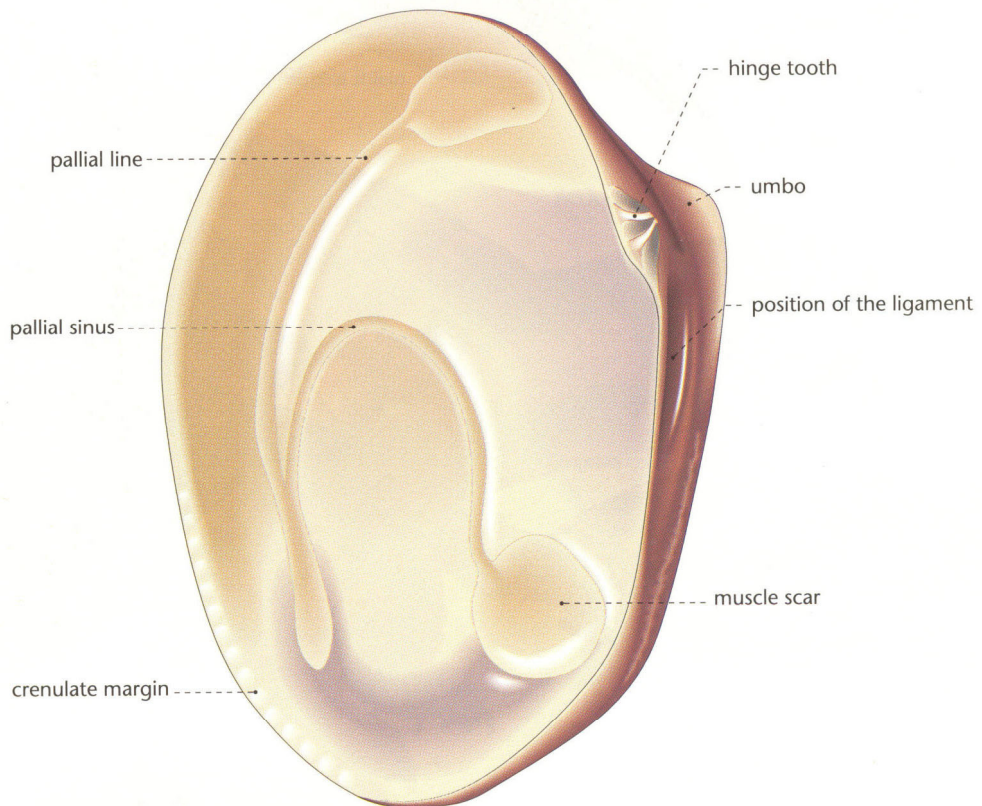


# BIVALVE SHELL

DORSAL VIEW

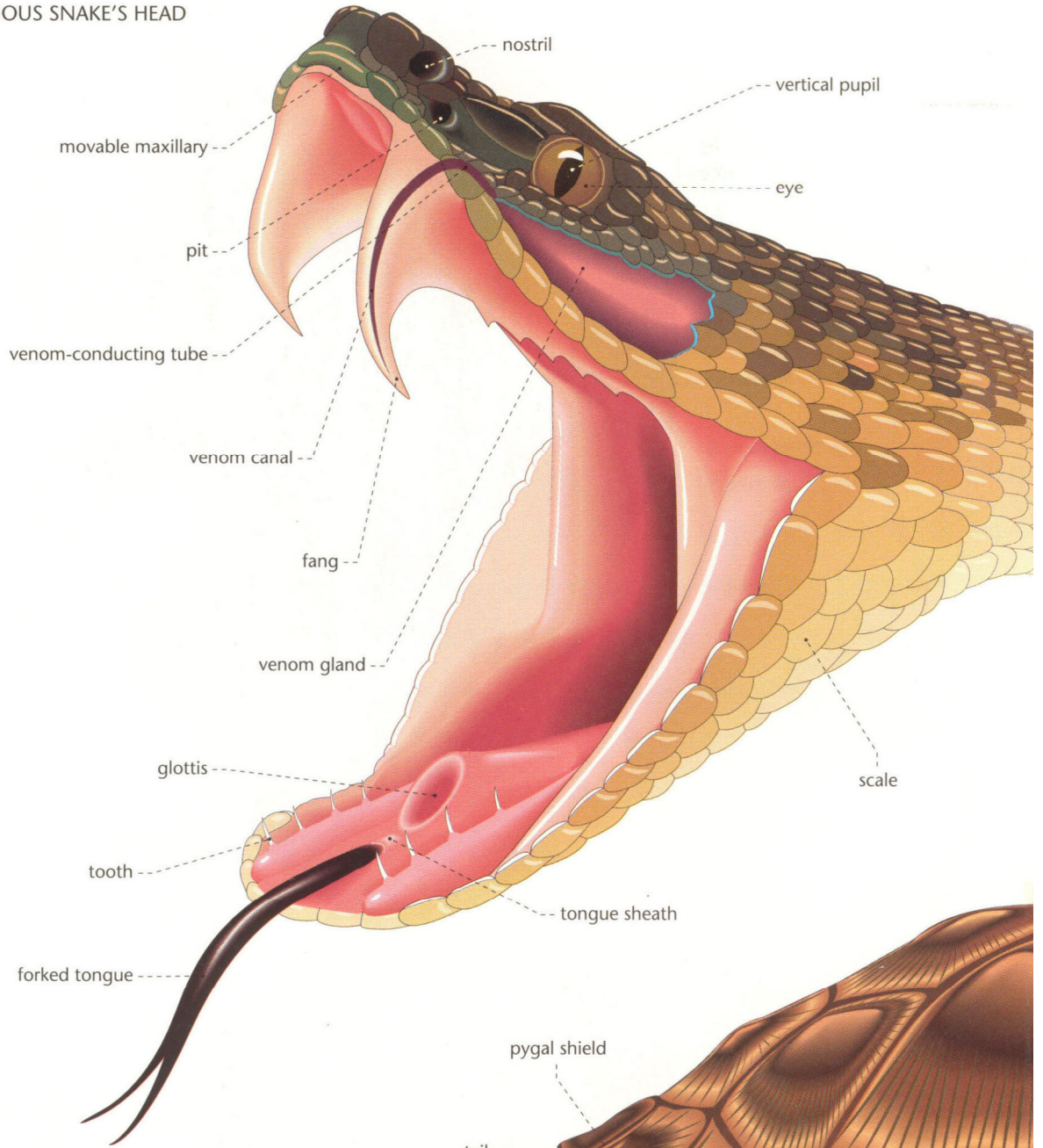


LEFT VALVE

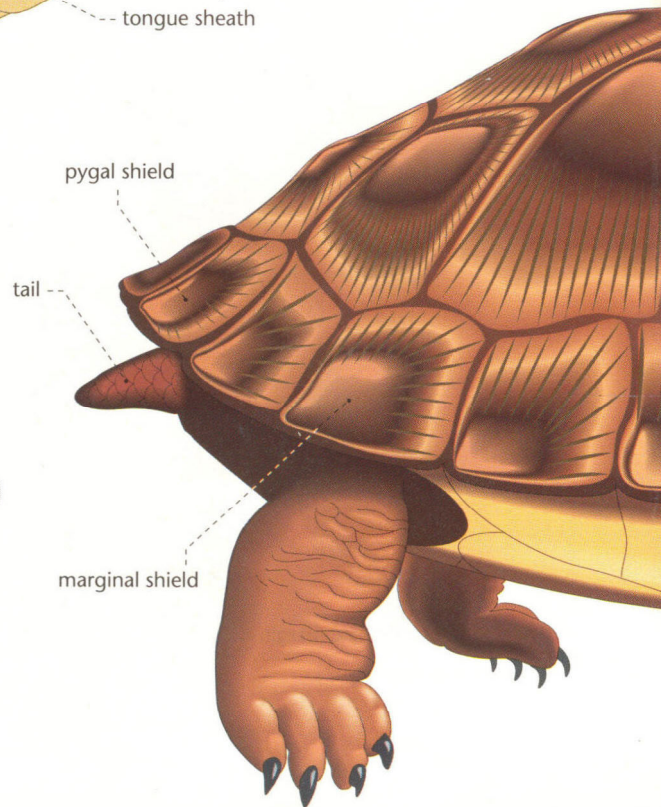
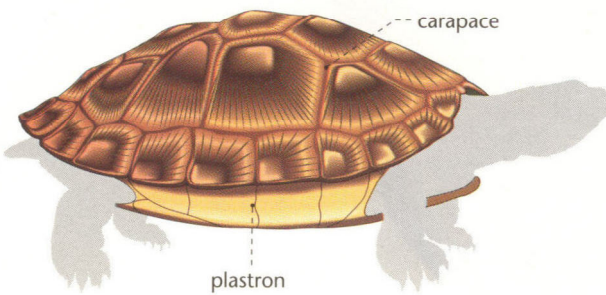


REPTILE

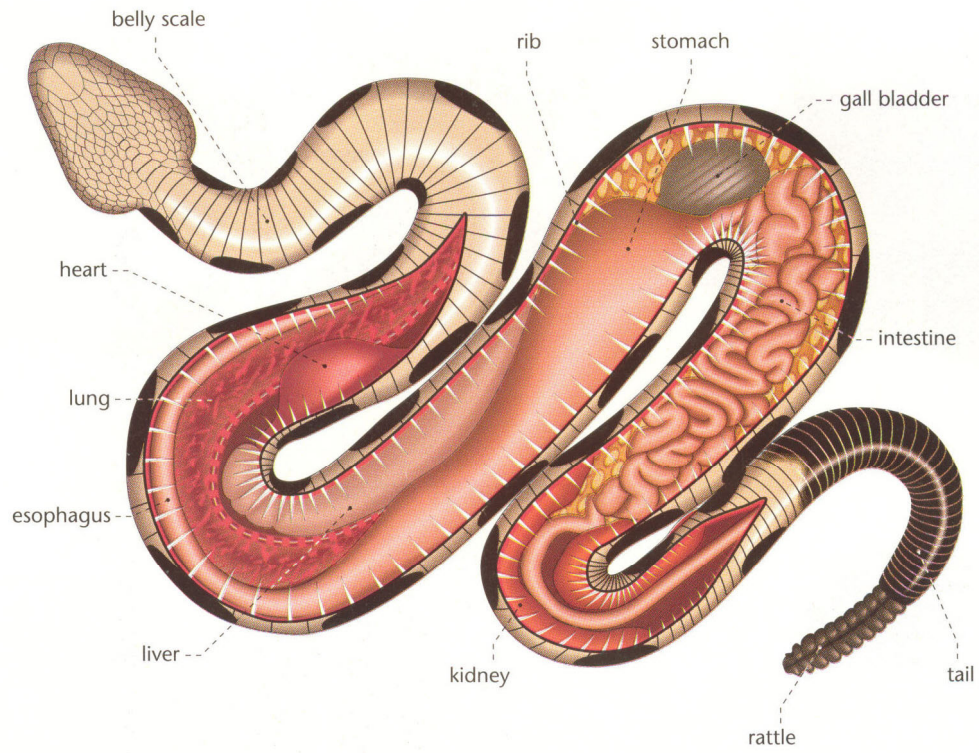
VENOMOUS SNAKE'S HEAD



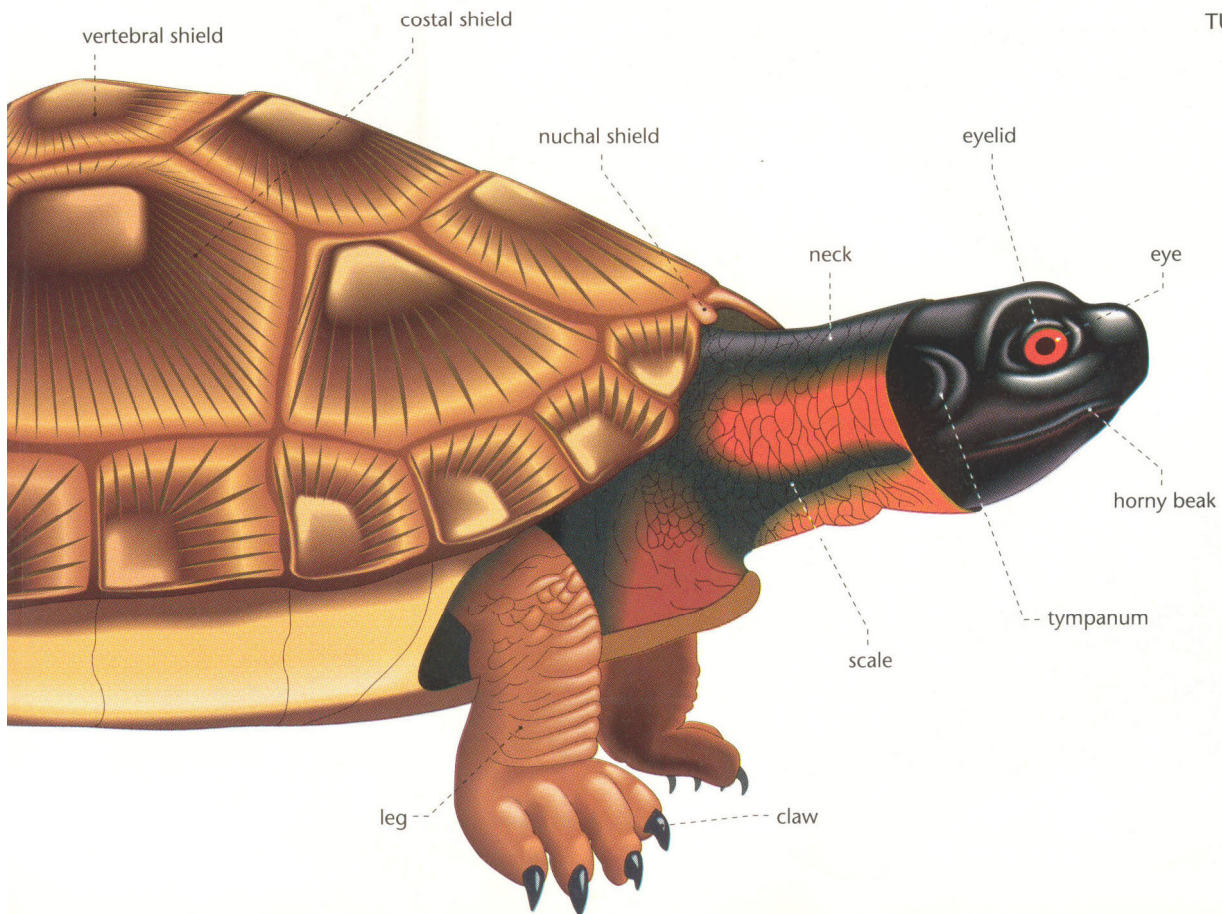
SHELL



RATTLESNAKE

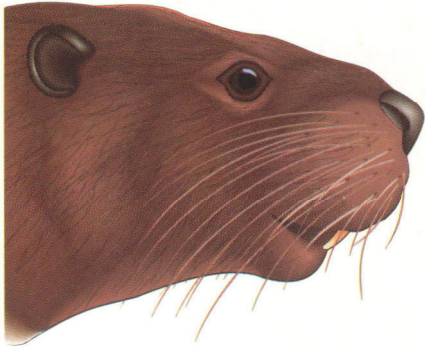


TURTLE

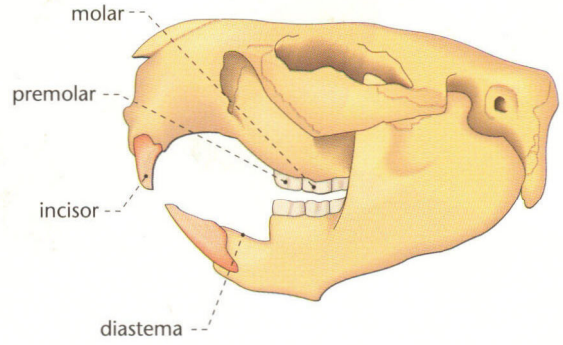


# TYPES OF JAWS

BEAVER



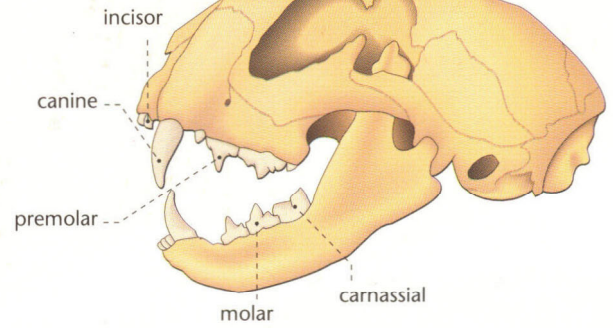
RODENT'S JAW



LION



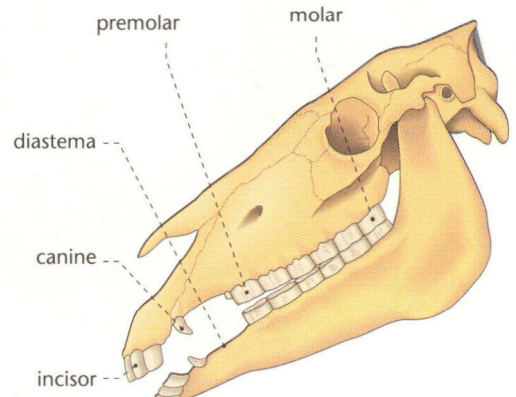
CARNIVORE'S JAW



HORSE



HERBIVORE'S JAW



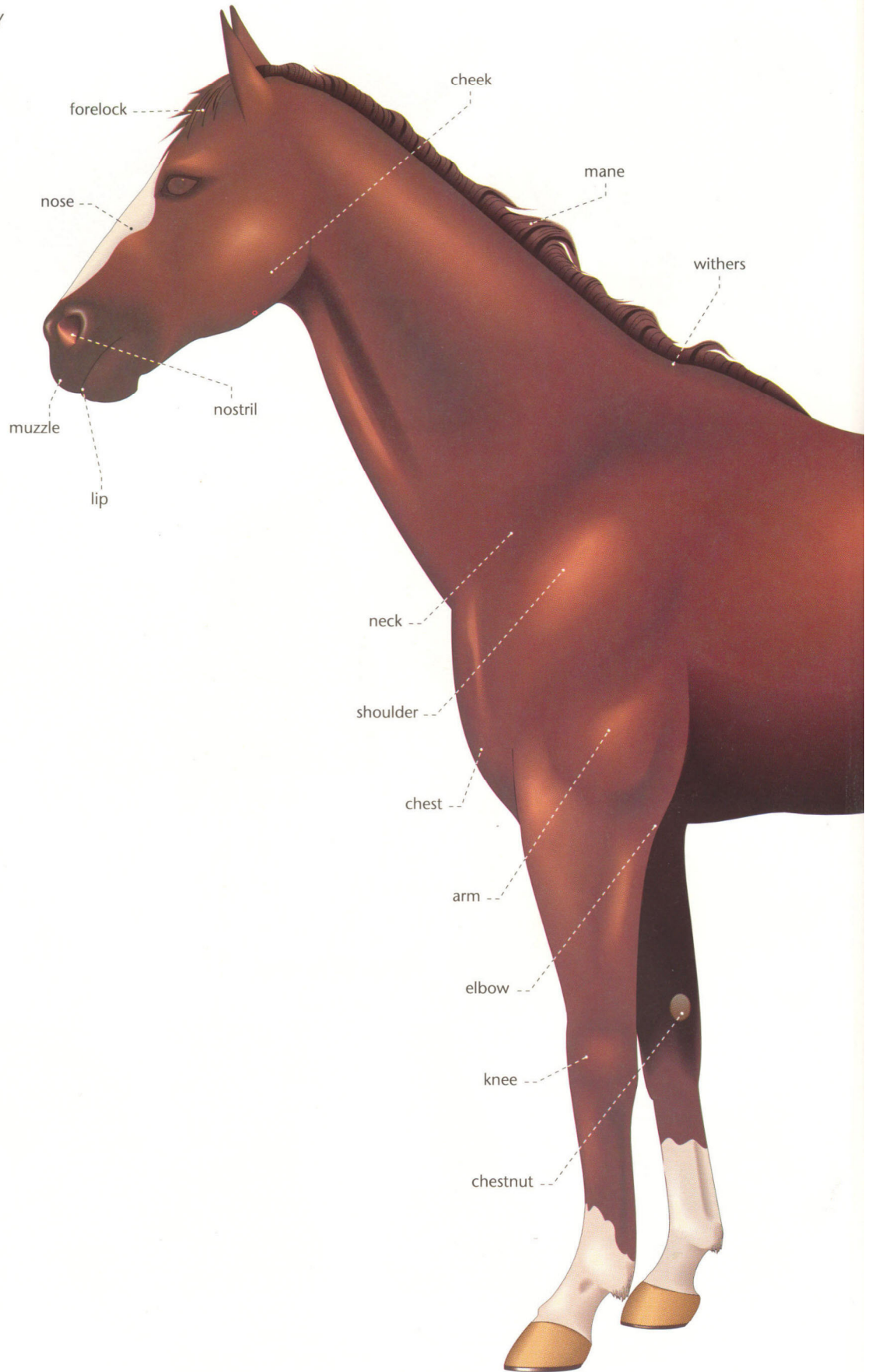


# HORSE

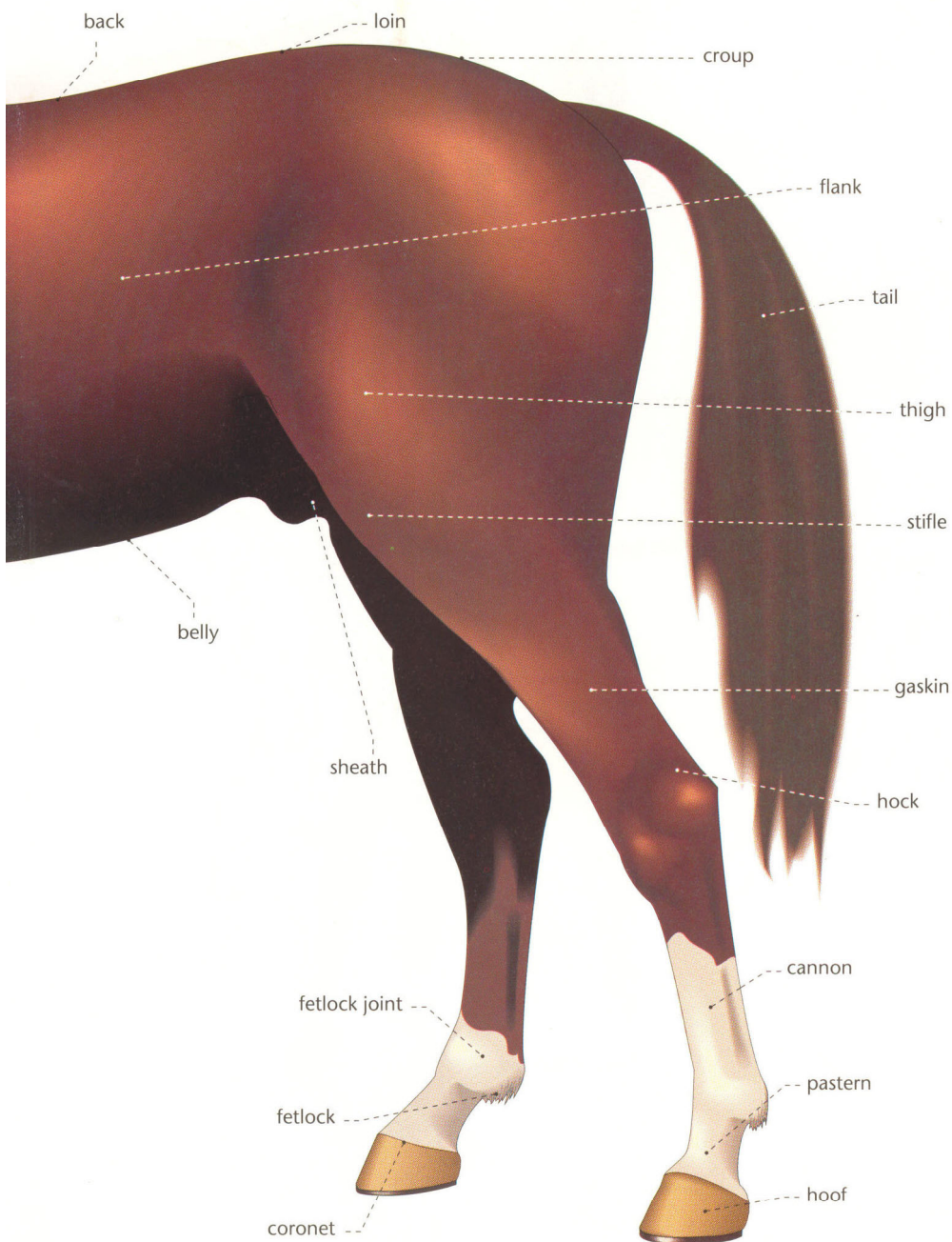
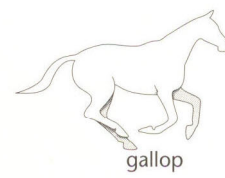
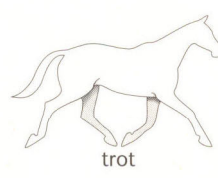
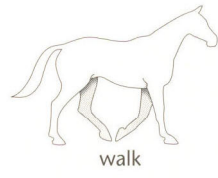
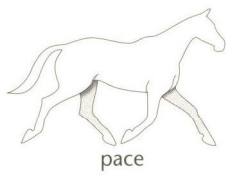
## MORPHOLOGY



ANIMAL KINGDOM

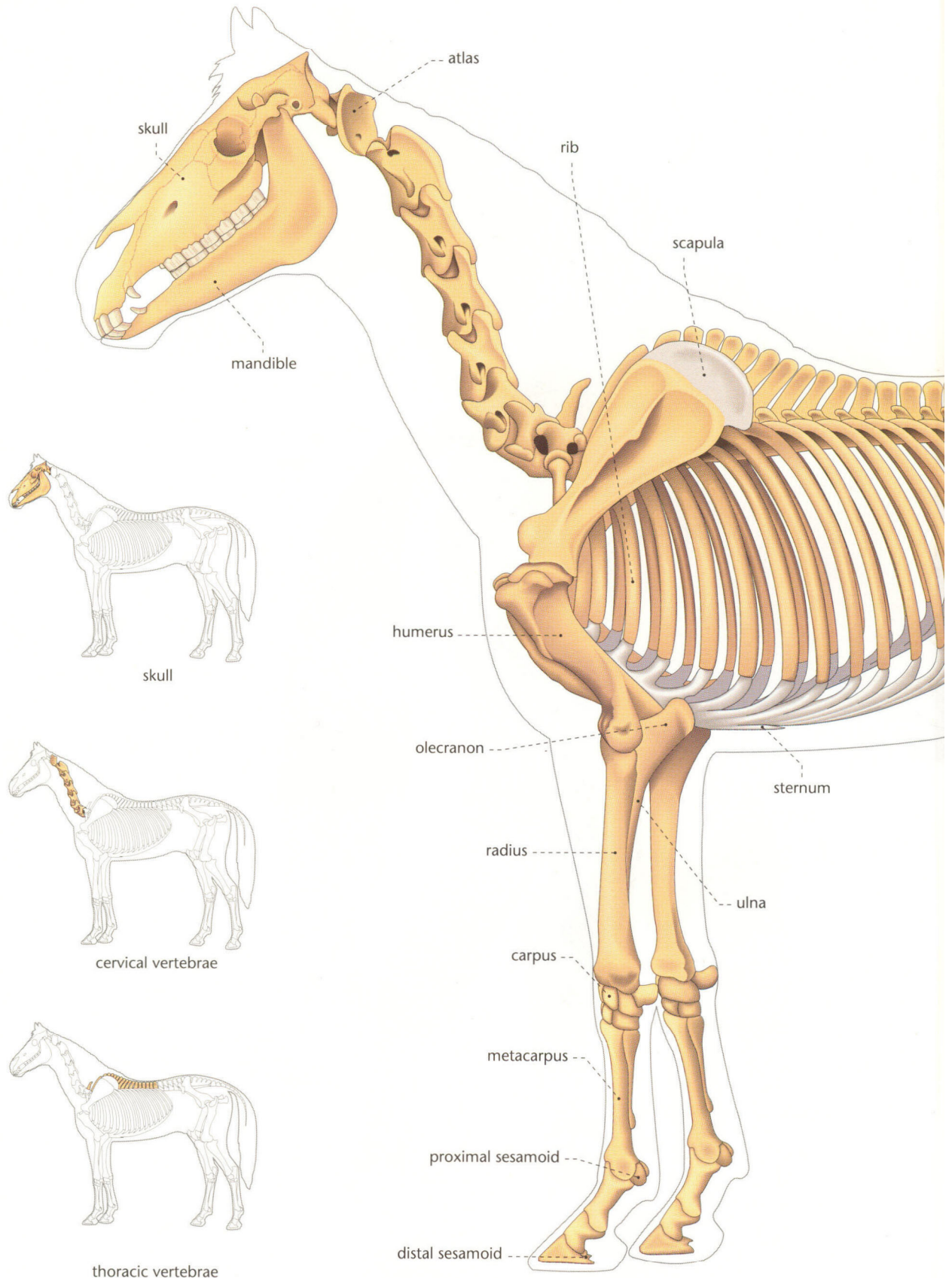


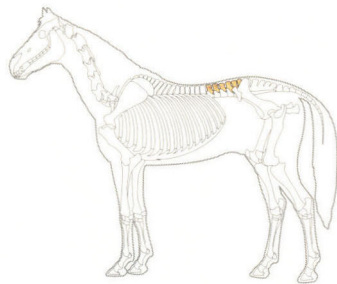
GAITS



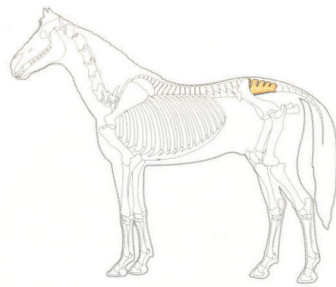
# HORSE

## SKELETON

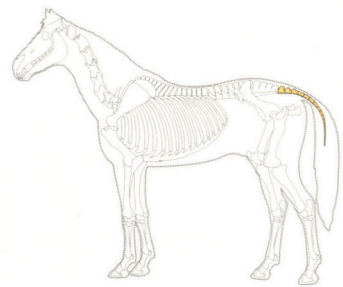




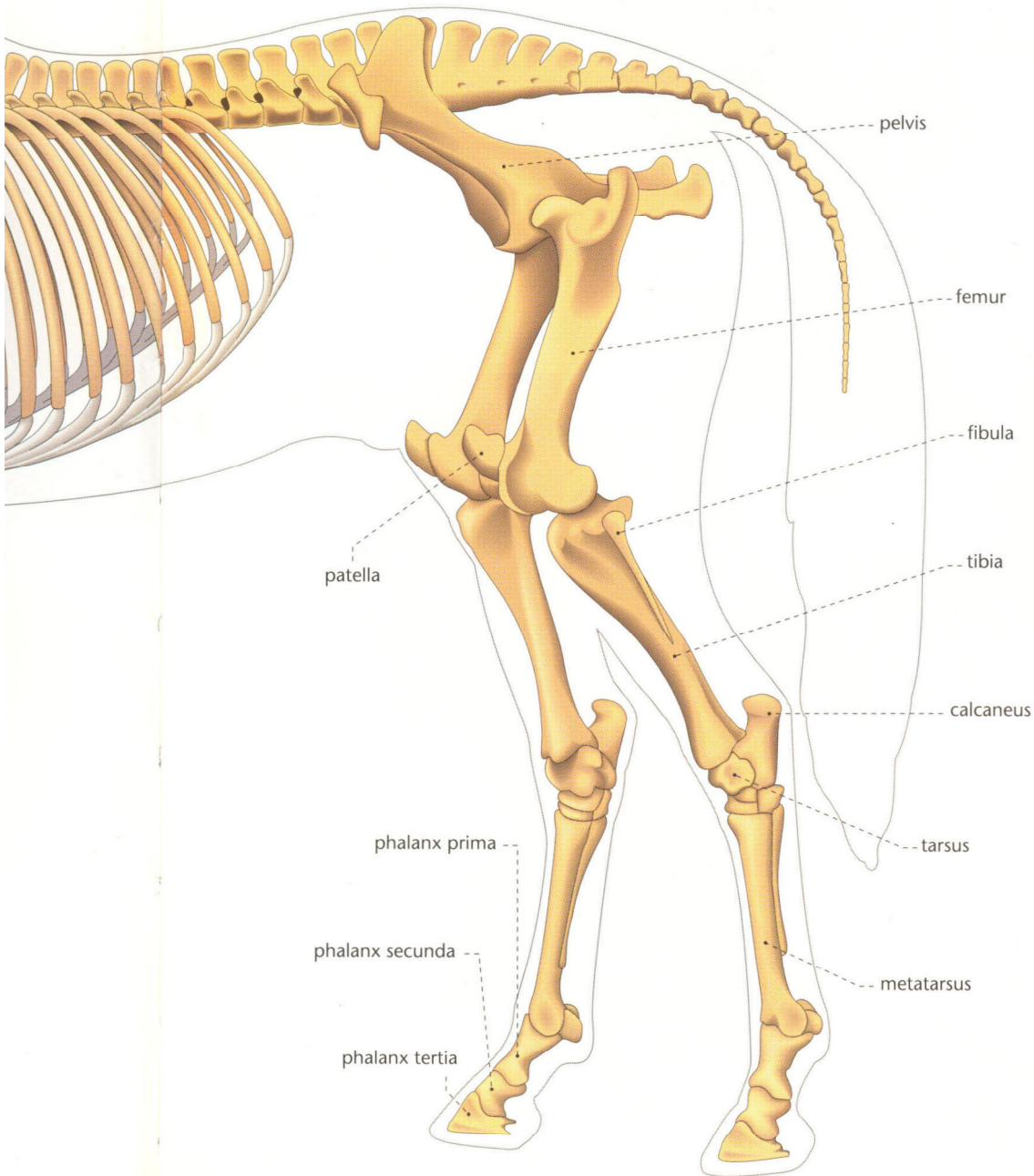
lumbar vertebrae



sacral vertebrae



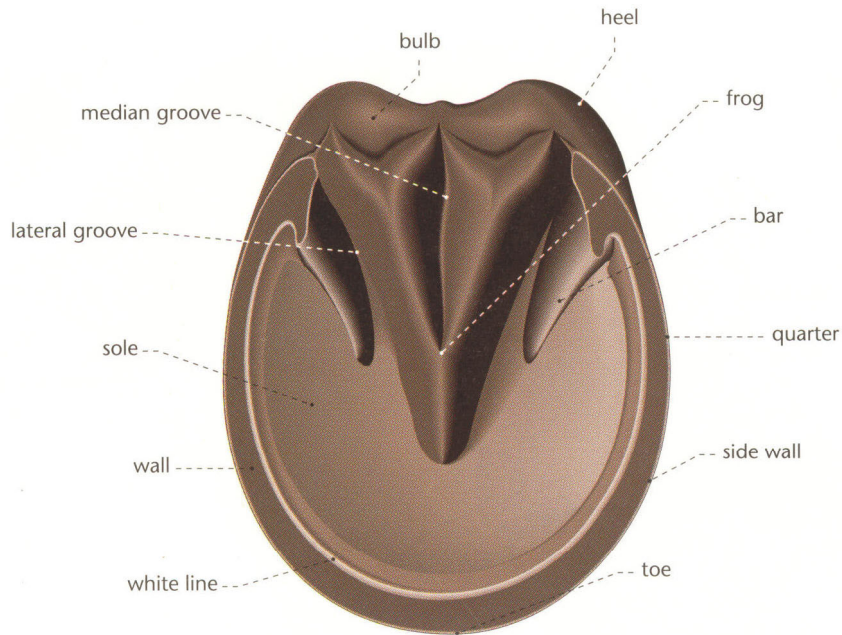
caudal vertebrae





HORSE

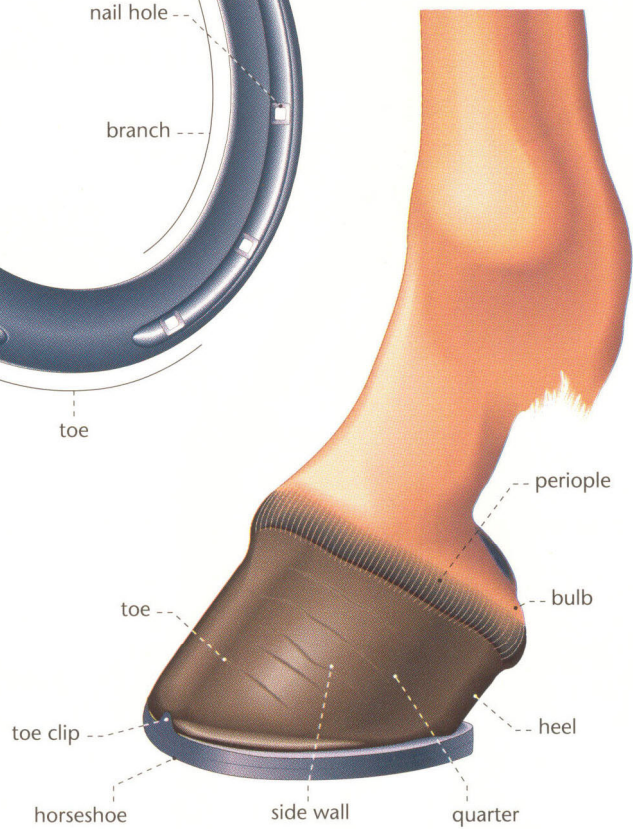
PLANTAR SURFACE OF THE HOOF



HORSESHOE

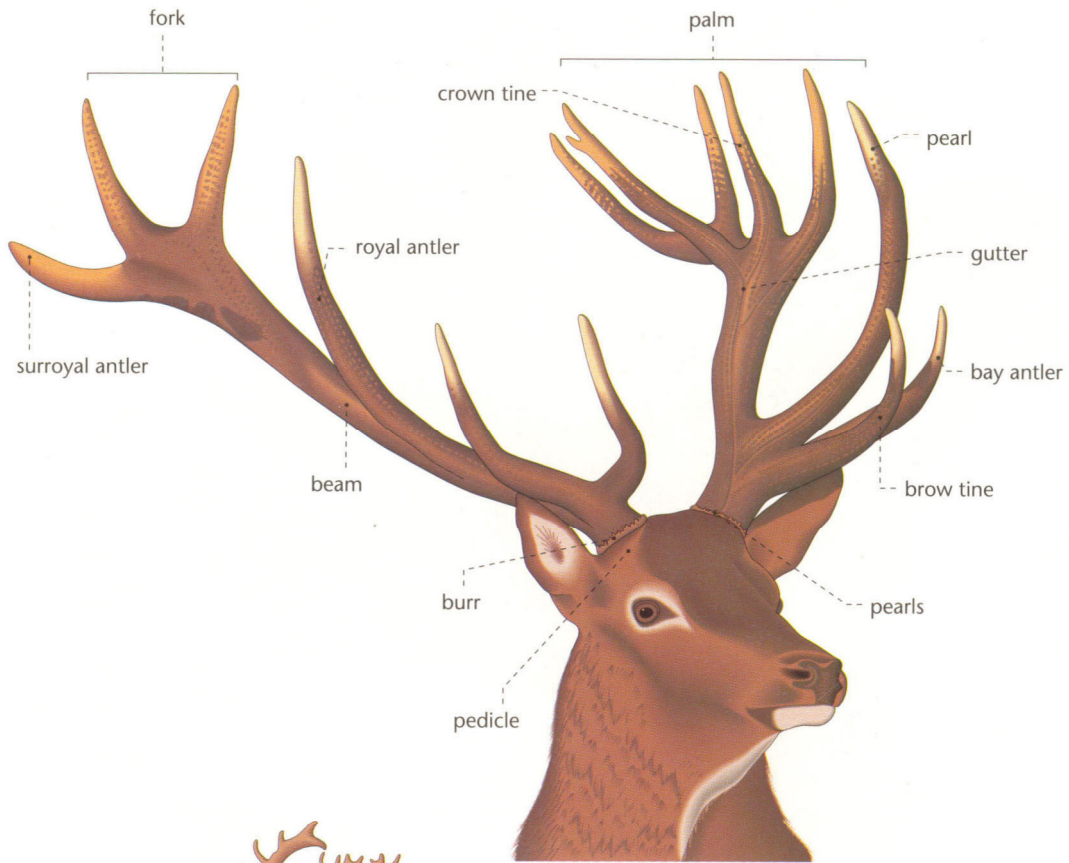


HOOF

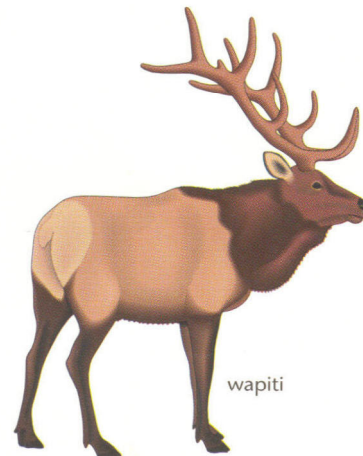
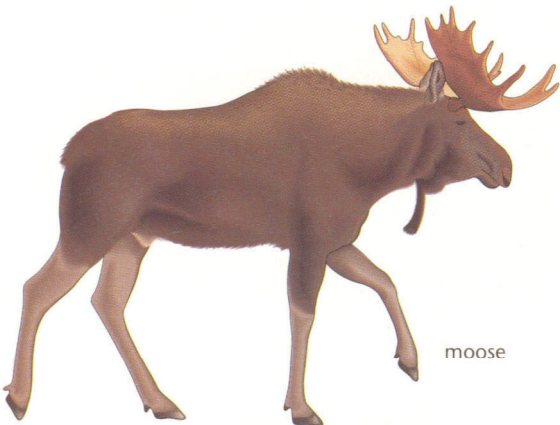
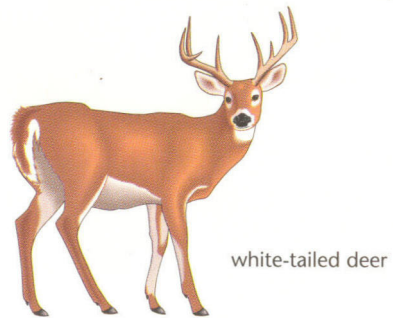


# DEER FAMILY

## DEER ANTLERS



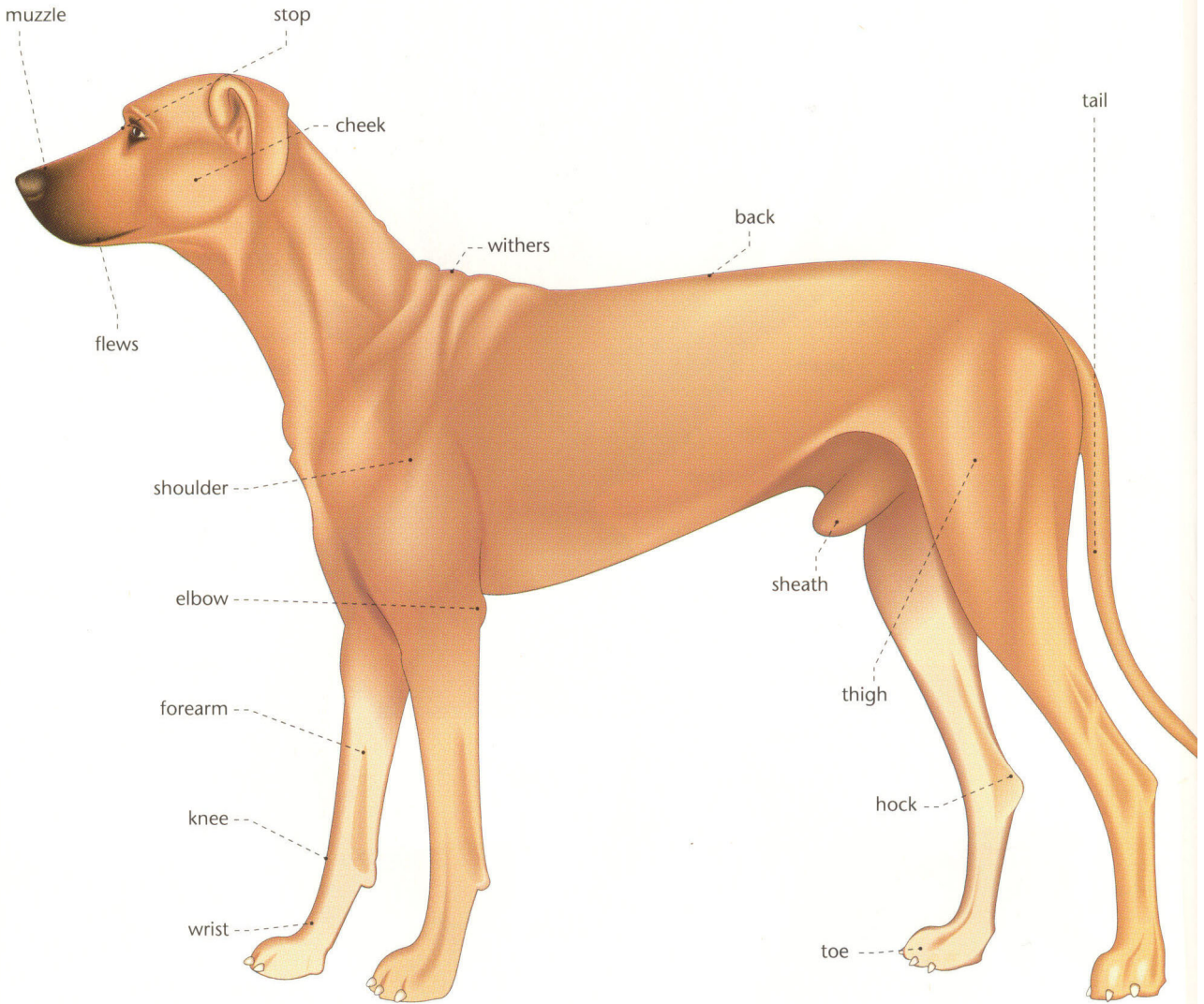
## KINDS OF DEER



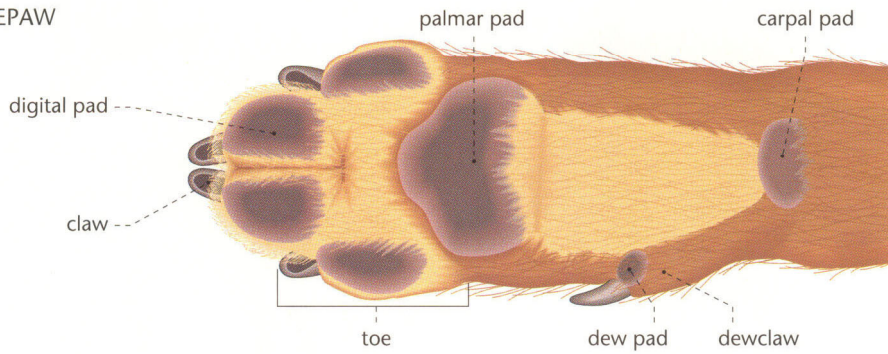
# DOG

## MORPHOLOGY

ANIMAL KINGDOM

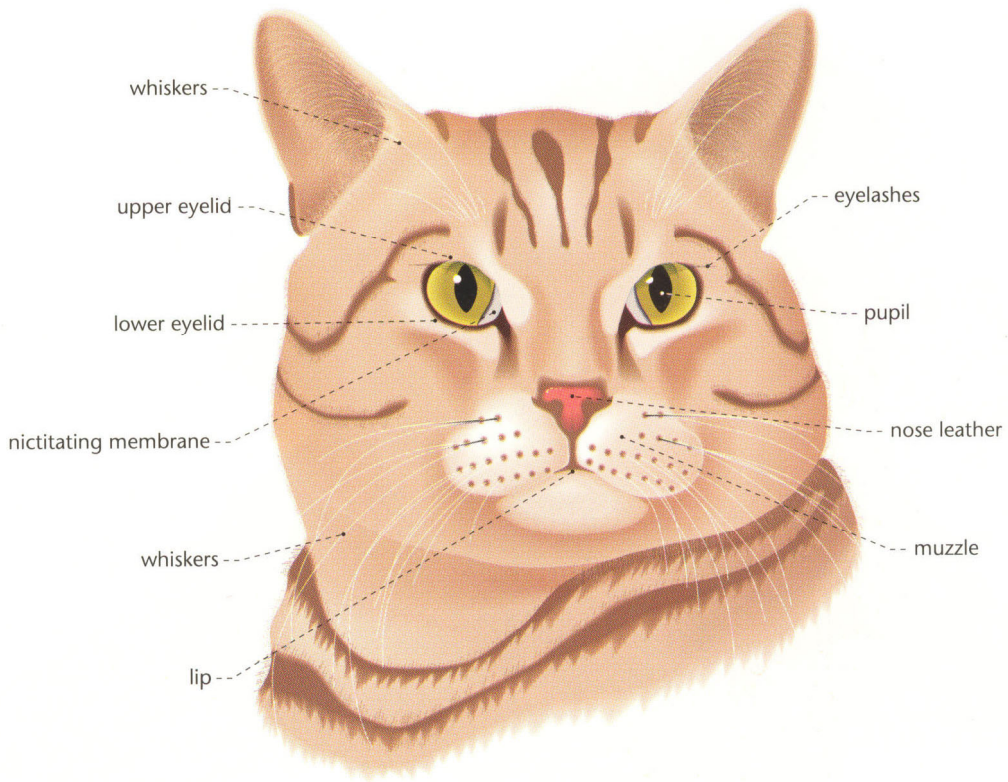


## DOG'S FOREPAW

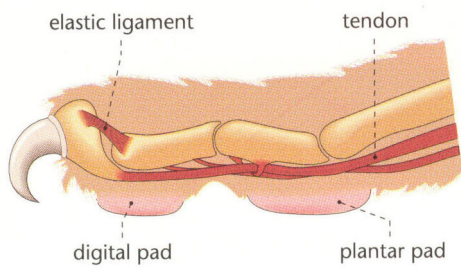


# CAT

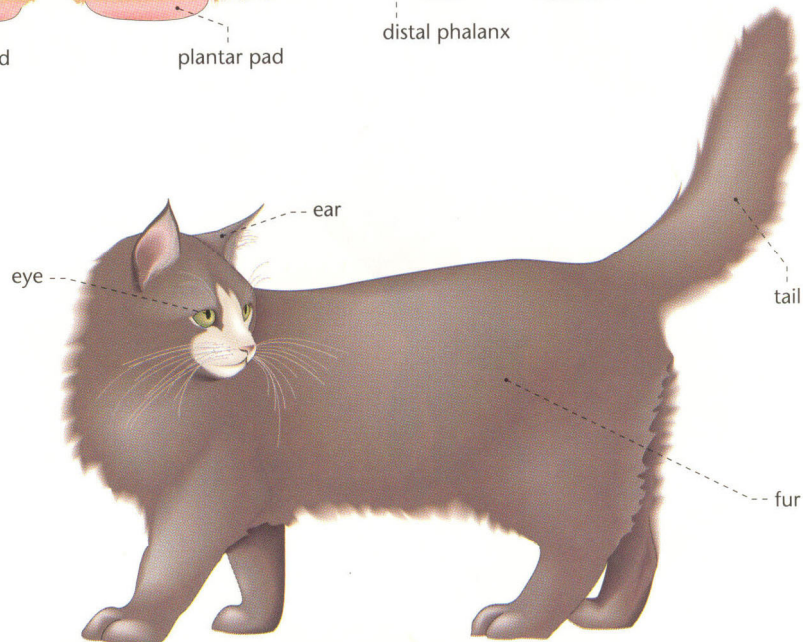
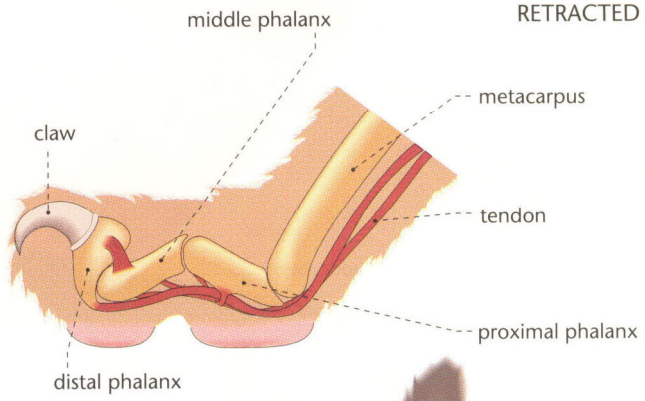
## CAT'S HEAD



## EXTENDED CLAW



## RETRACTED CLAW



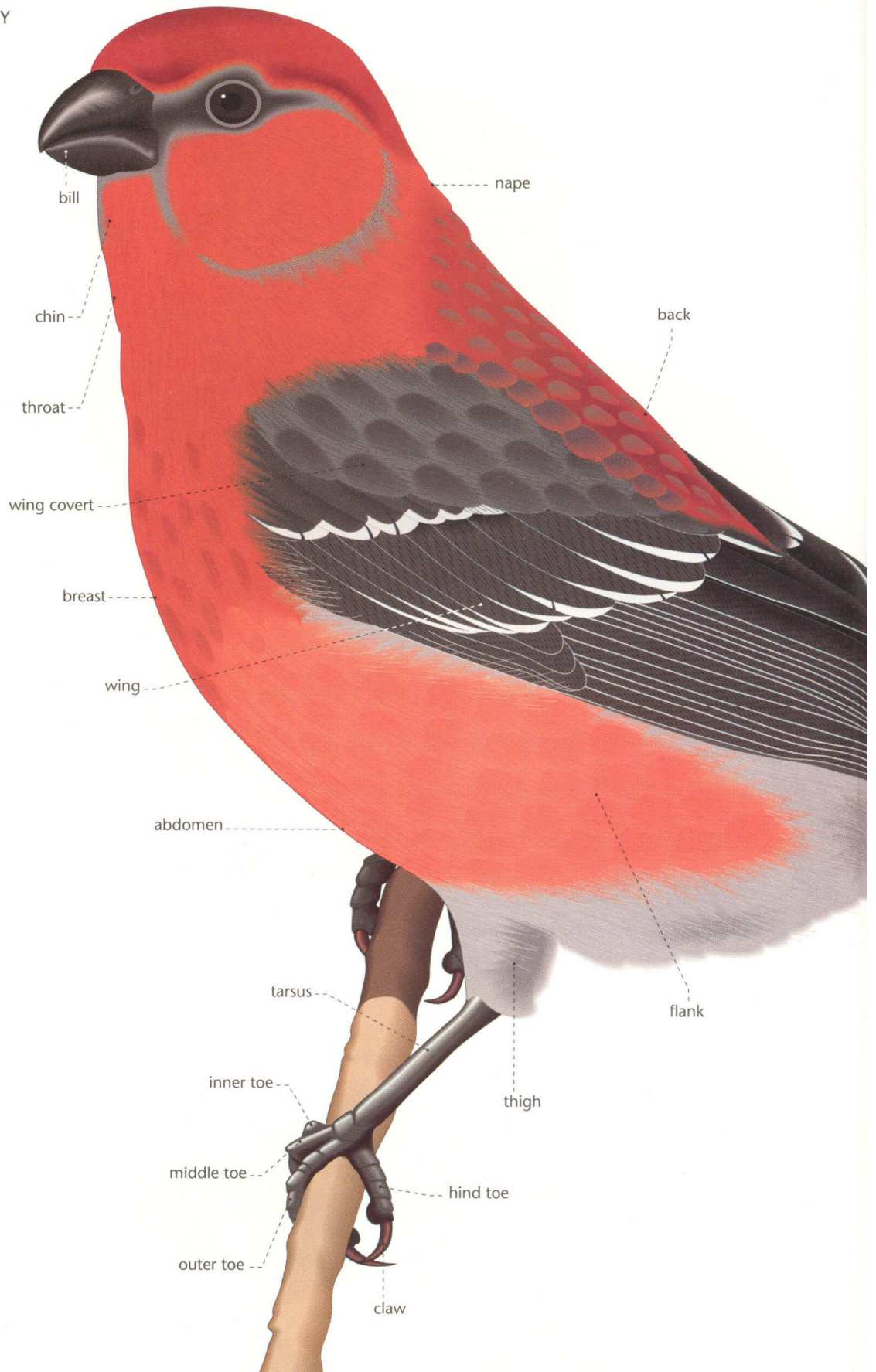


BIRD

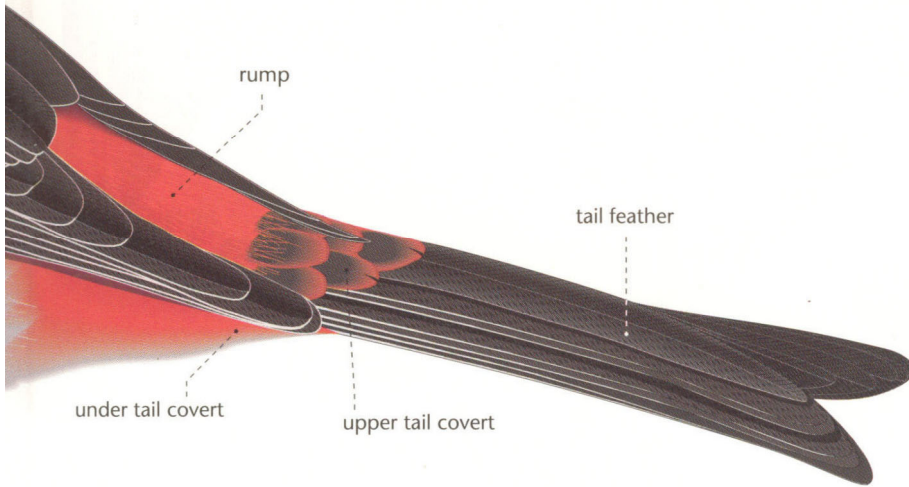
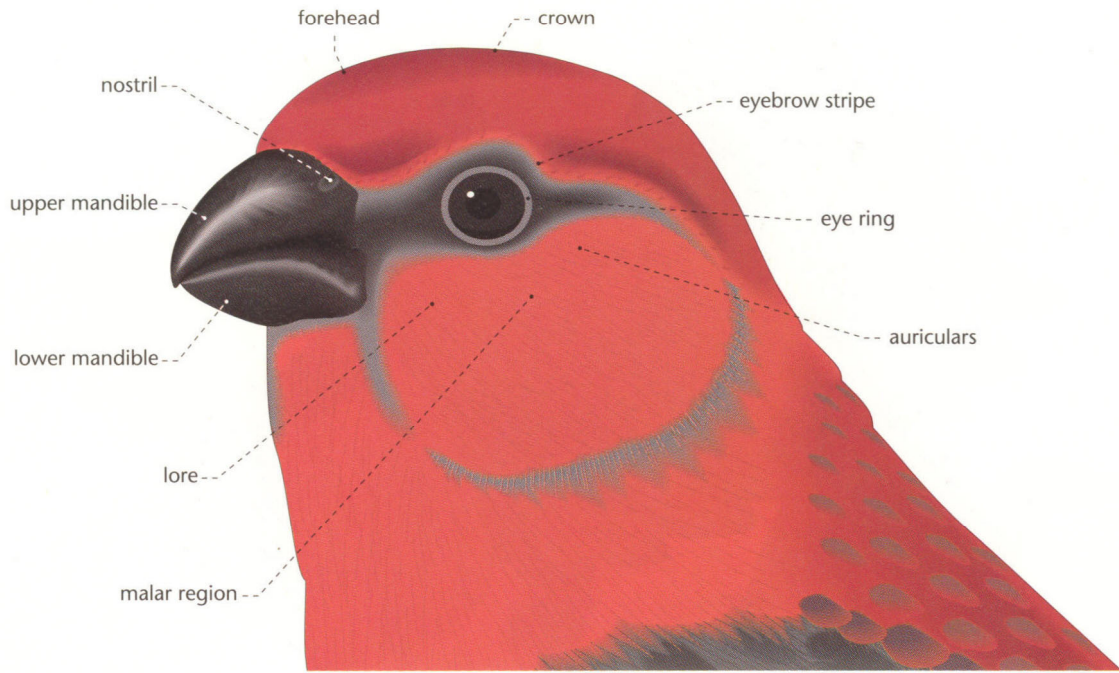
MORPHOLOGY



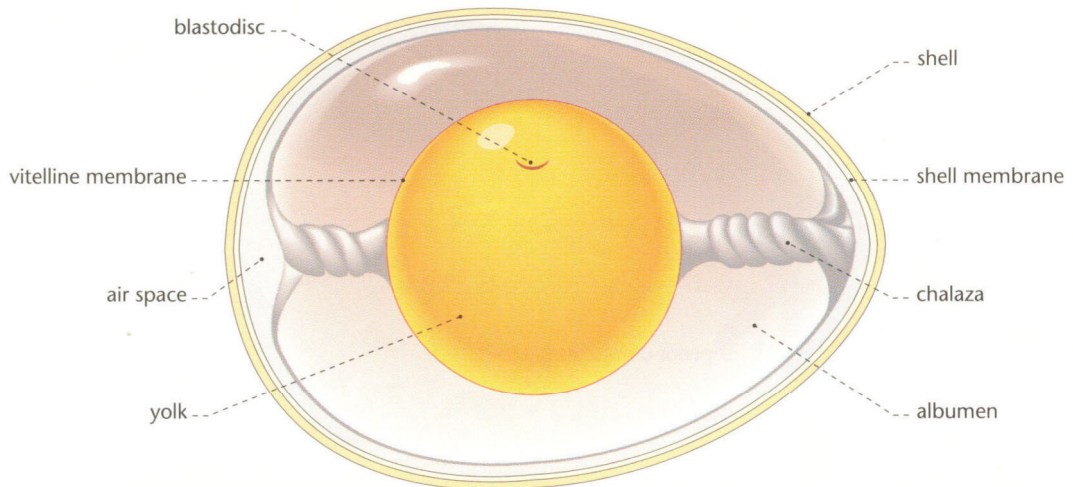
ANIMAL KINGDOM



HEAD



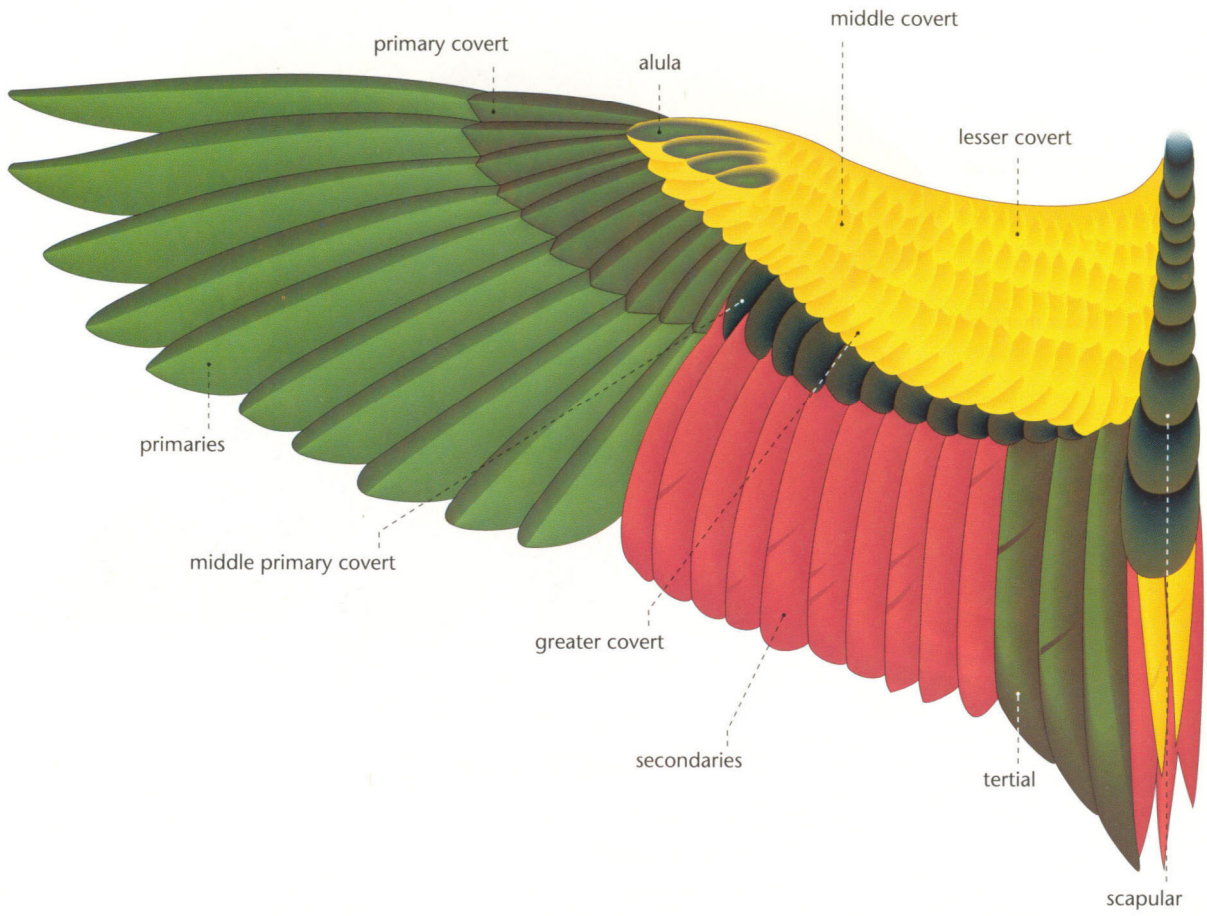
EGG



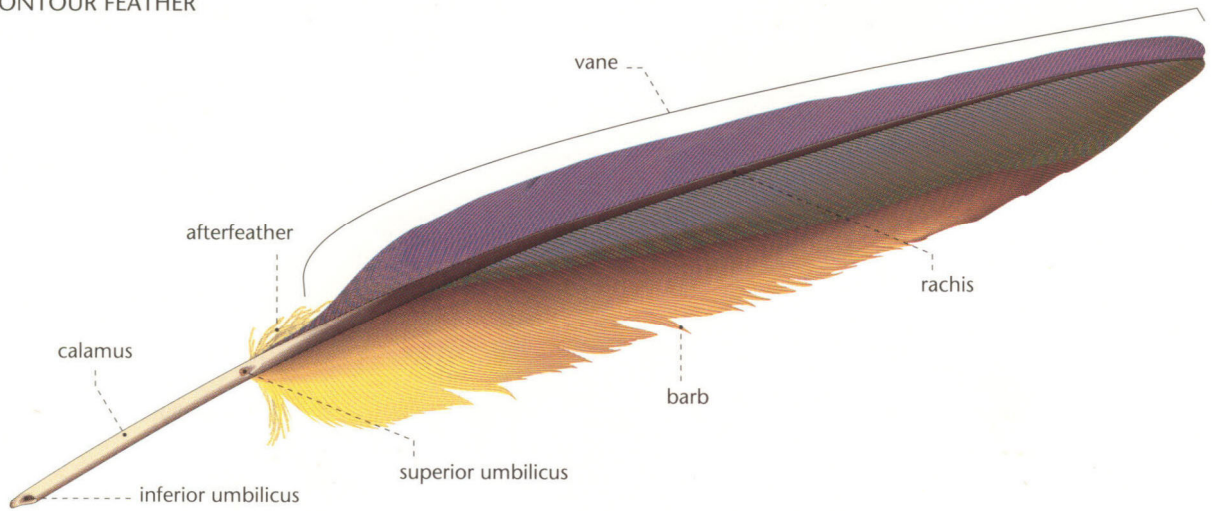
BIRD

WING

ANIMAL KINGDOM



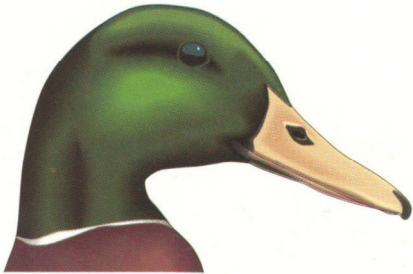
CONTOUR FEATHER



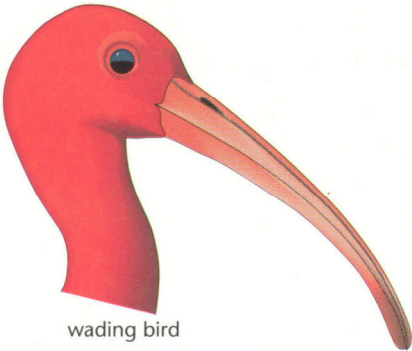
PRINCIPAL TYPES OF BILLS



bird of prey



aquatic bird



wading bird



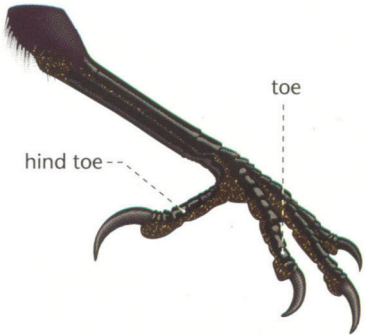
granivorous bird



insectivorous bird

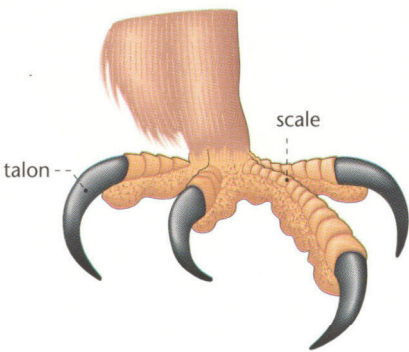
PRINCIPAL TYPES OF FEET

perching bird



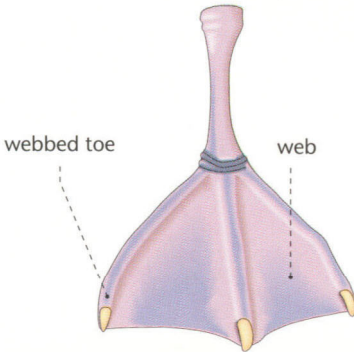
toe  
hind toe

bird of prey



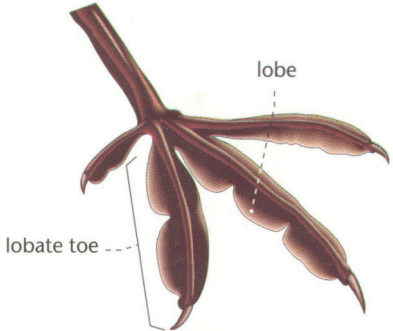
scale  
talon

aquatic bird



webbed toe  
web

aquatic bird



lobe  
lobate toe



BAT

BAT'S HEAD

