

VEGETABLE KINGDOM



CONTENTS

MUSHROOM55

TYPES OF LEAVES56

STRUCTURE OF A PLANT.....57

CONIFER58

STRUCTURE OF A TREE59

STRUCTURE OF A FLOWER.....60

GRAPE.....61

FLESHY FRUITS: BERRY FRUITS62

STONE FLESHY FRUITS63

POME FLESHY FRUITS.....64

FLESHY FRUITS: CITRUS FRUITS65

DRY FRUITS: NUTS66

VARIOUS DRY FRUITS67

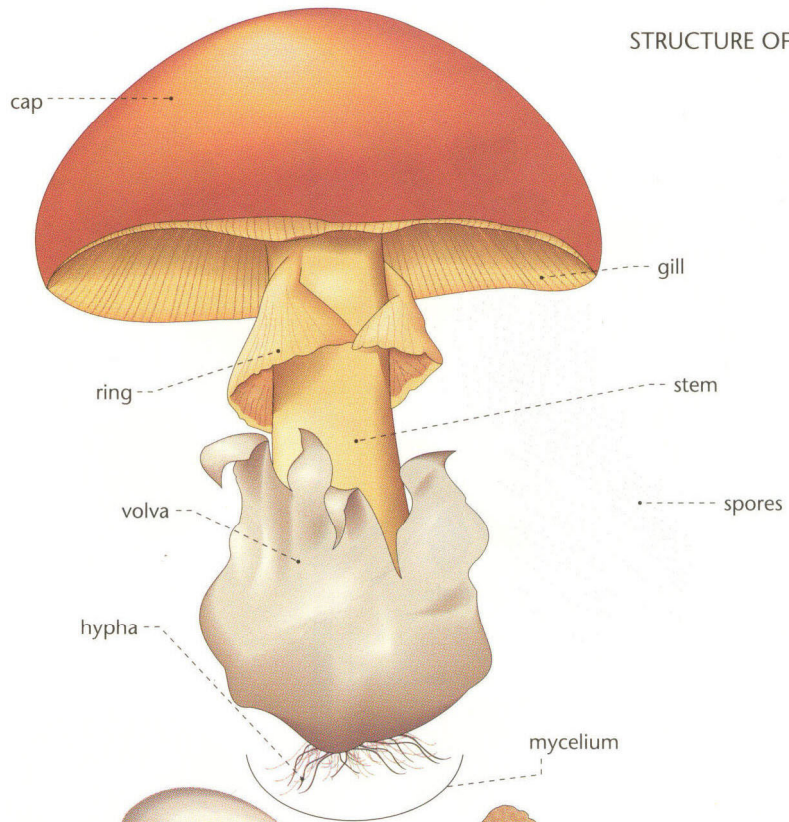
TROPICAL FRUITS.....68

VEGETABLES.....69

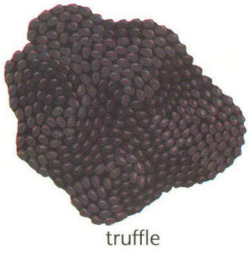
HERBS74

MUSHROOM

STRUCTURE OF A MUSHROOM



EDIBLE MUSHROOMS



truffle



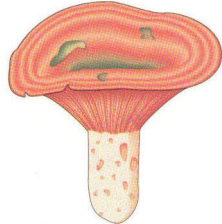
cultivated mushroom



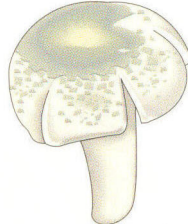
morel



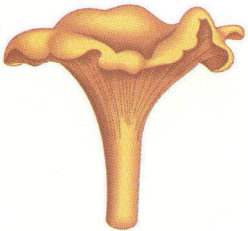
royal agaric



delicious lactarius



green russula



chanterelle



boletus



oyster mushroom

DEADLY POISONOUS MUSHROOM



destroying angel

POISONOUS MUSHROOM



fly agaric

TYPES OF LEAVES

VEGETABLE KINGDOM

LEAF MARGIN

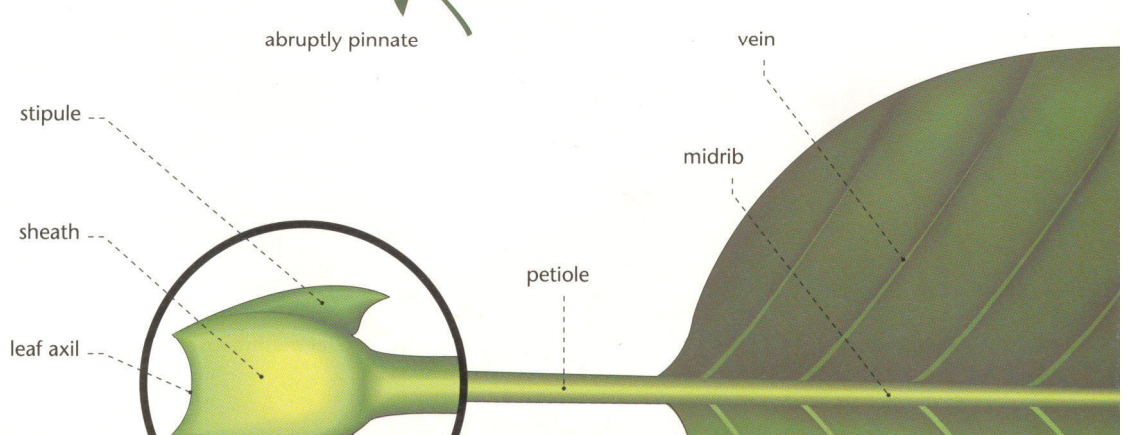
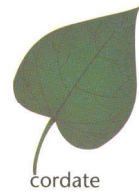


LEAF

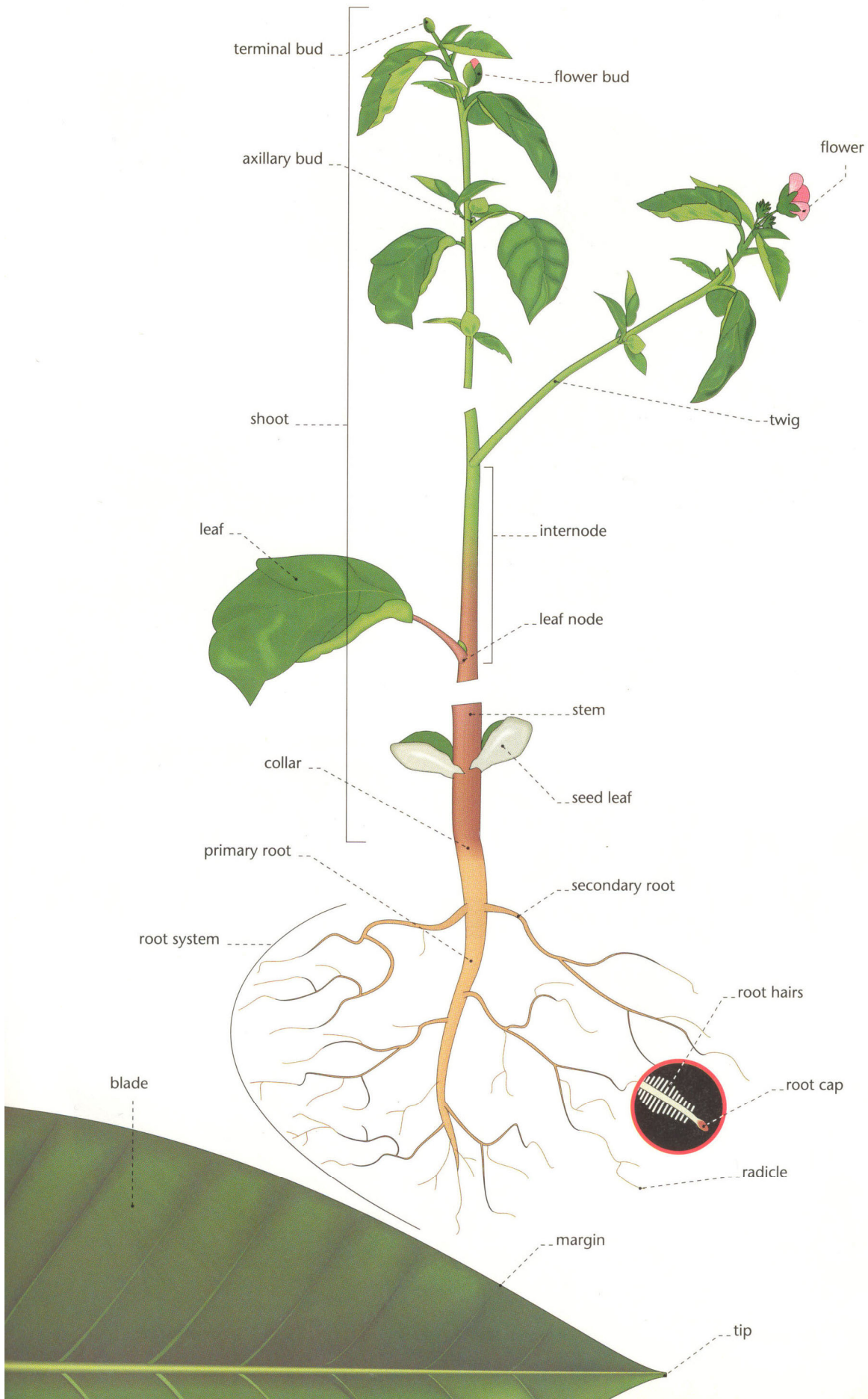
COMPOUND LEAVES



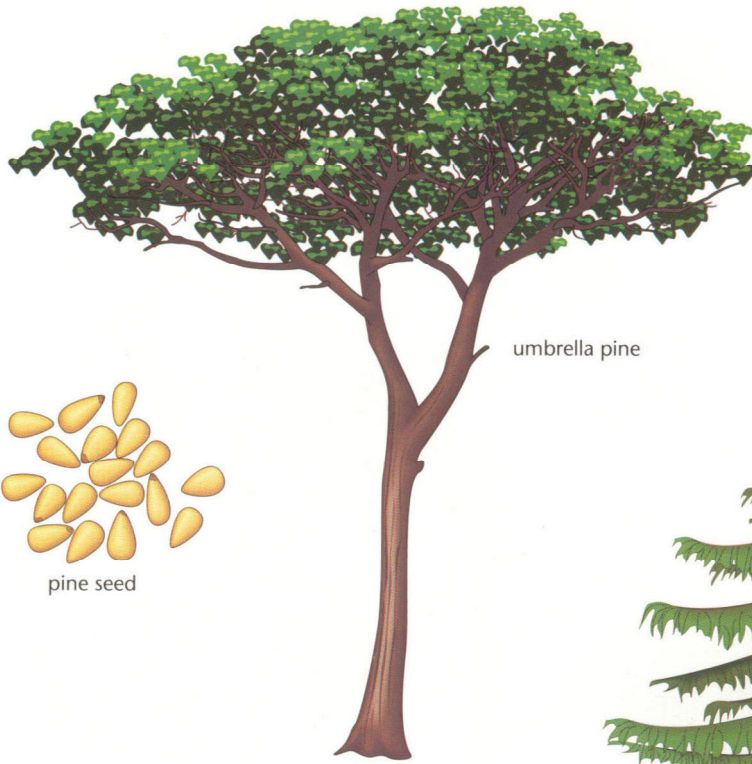
SIMPLE LEAVES



STRUCTURE OF A PLANT



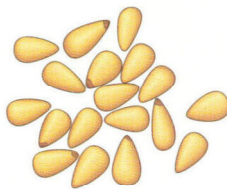
CONIFER



umbrella pine



cone

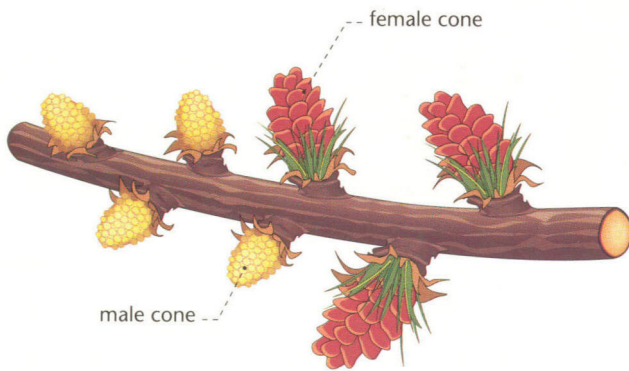


pine seed



larch

BRANCH



female cone

male cone

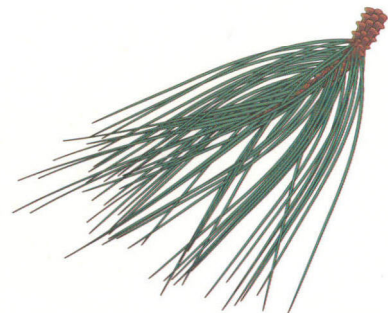
TYPES OF LEAVES



fir needles



cypress scalelike leaves

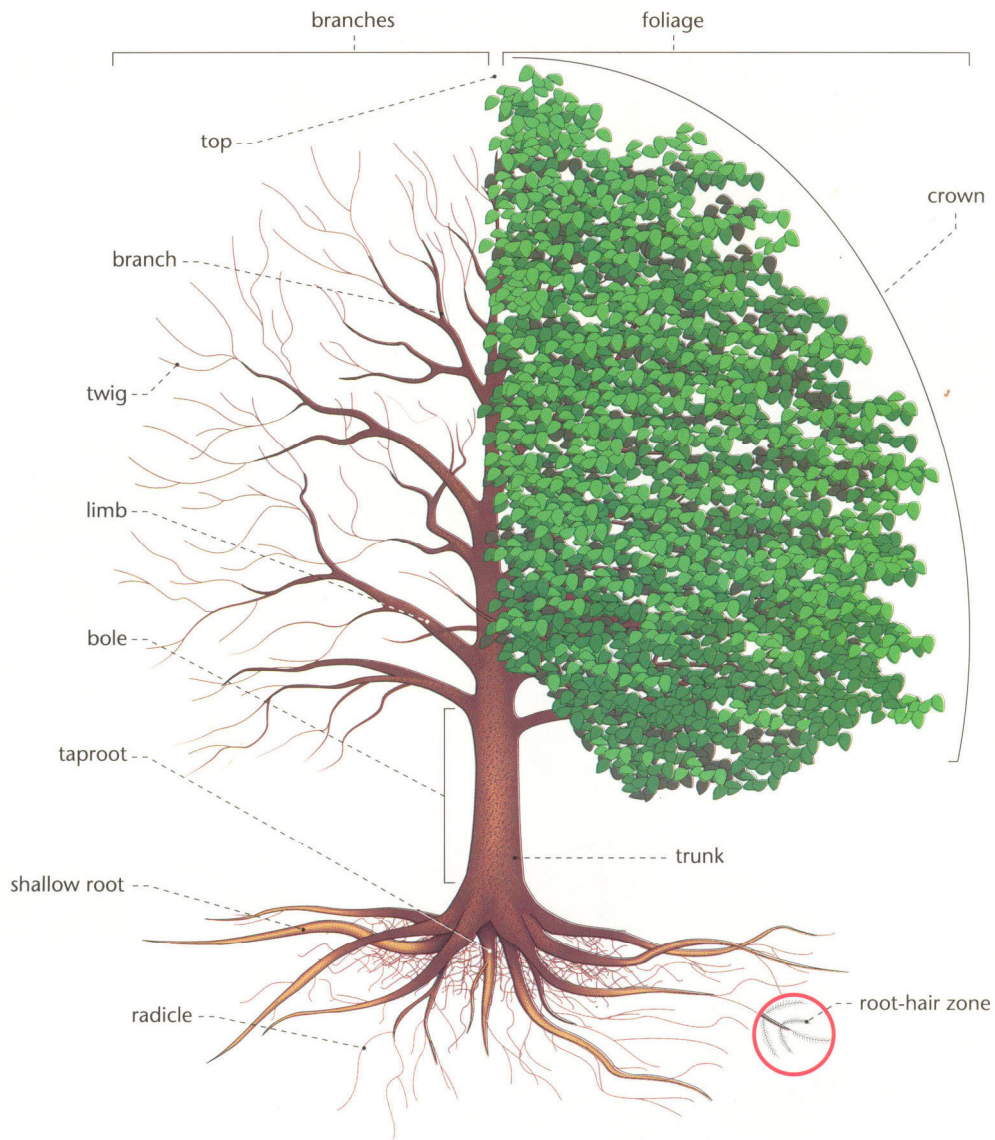


pine needles

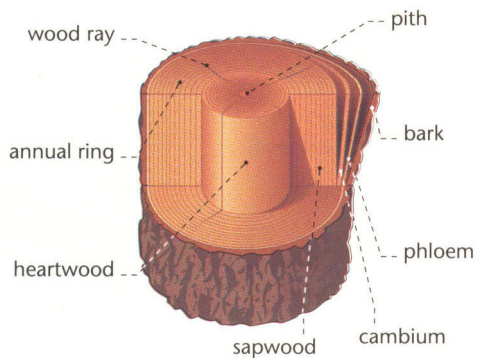
STRUCTURE OF A TREE

TREE

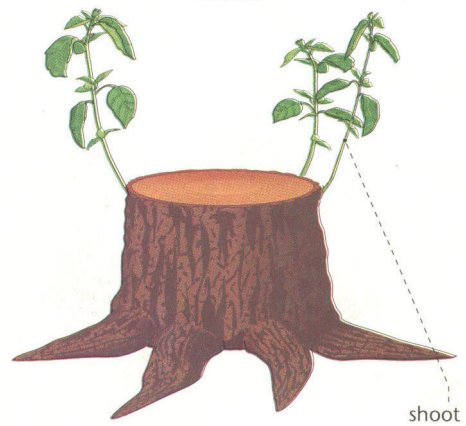
VEGETABLE KINGDOM



CROSS SECTION OF A TRUNK

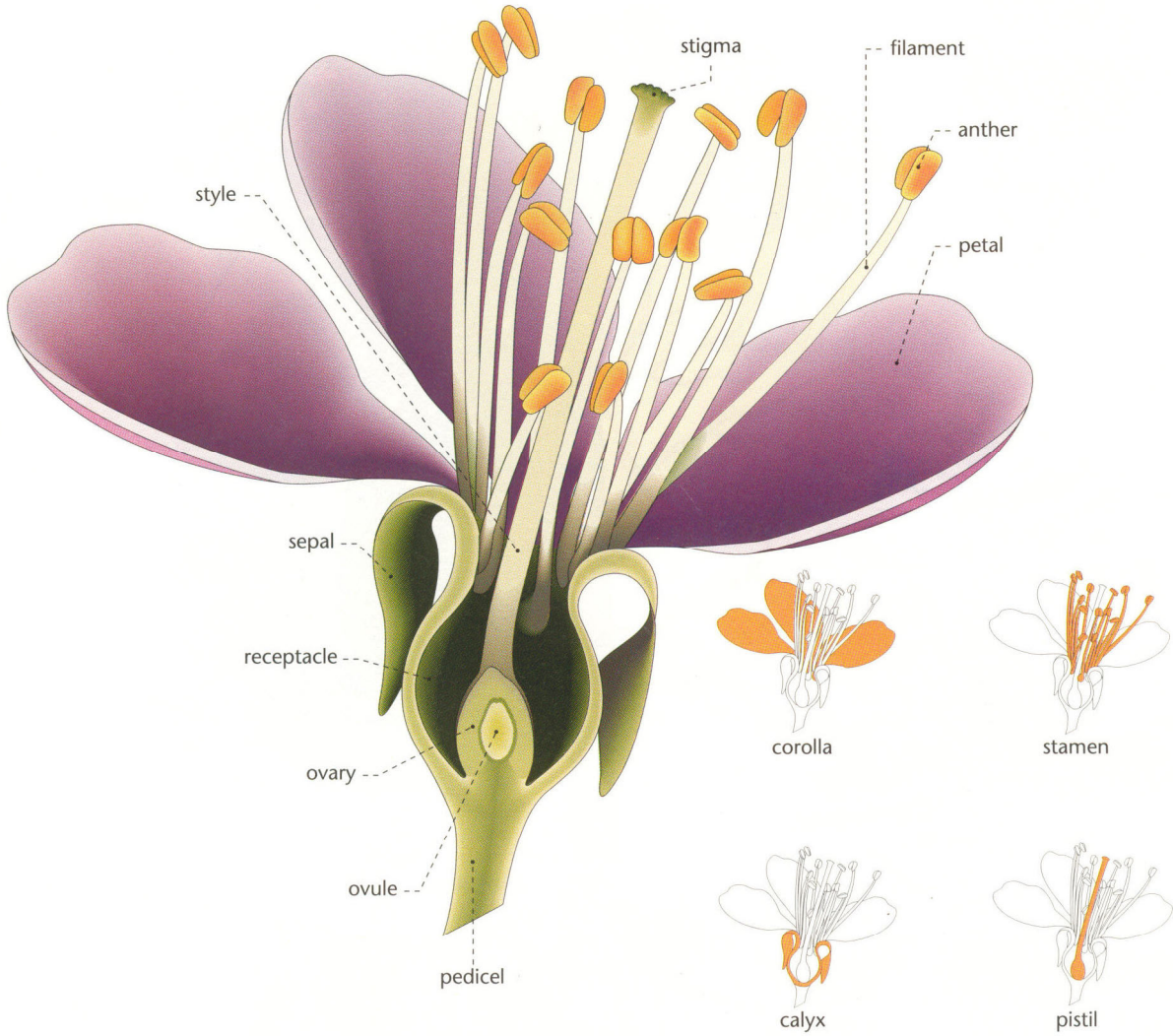


STUMP

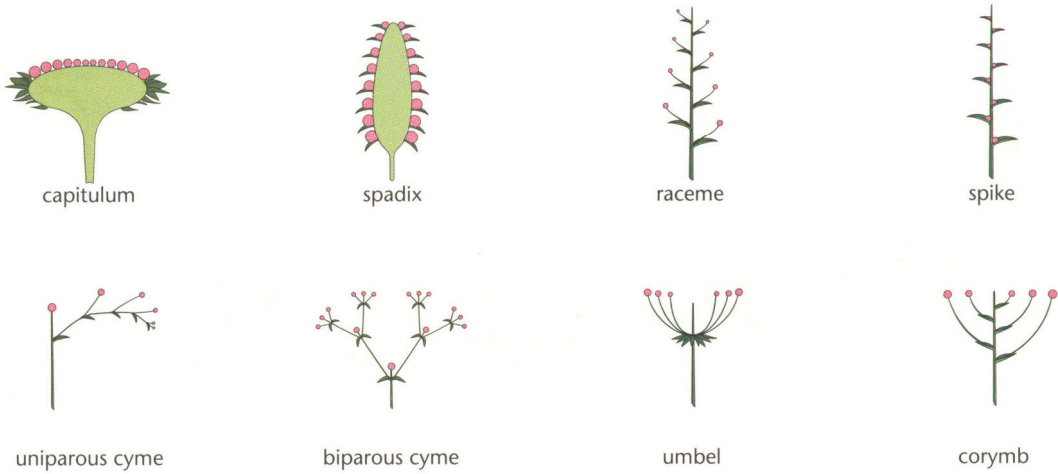




STRUCTURE OF A FLOWER



TYPES OF INFLORESCENCES

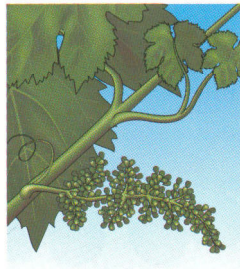


GRAPE

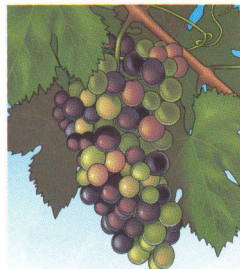
MATURING STEPS



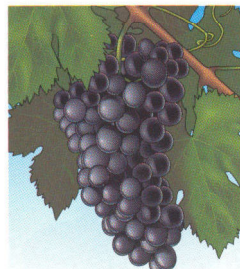
flowering



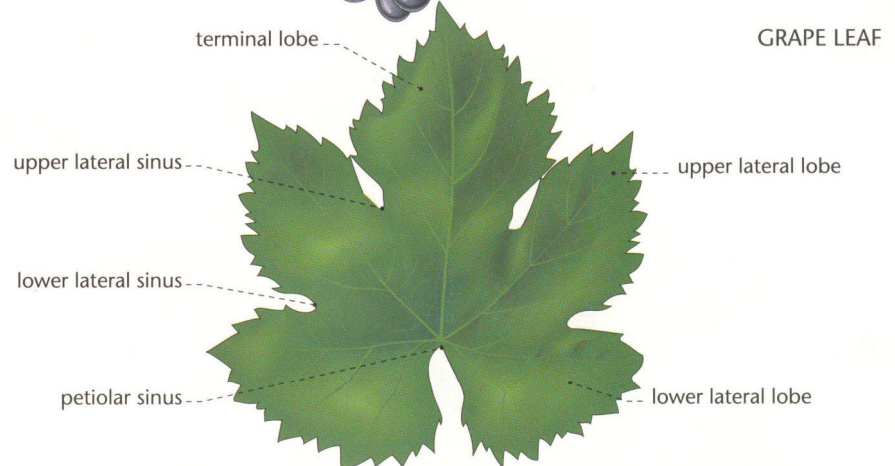
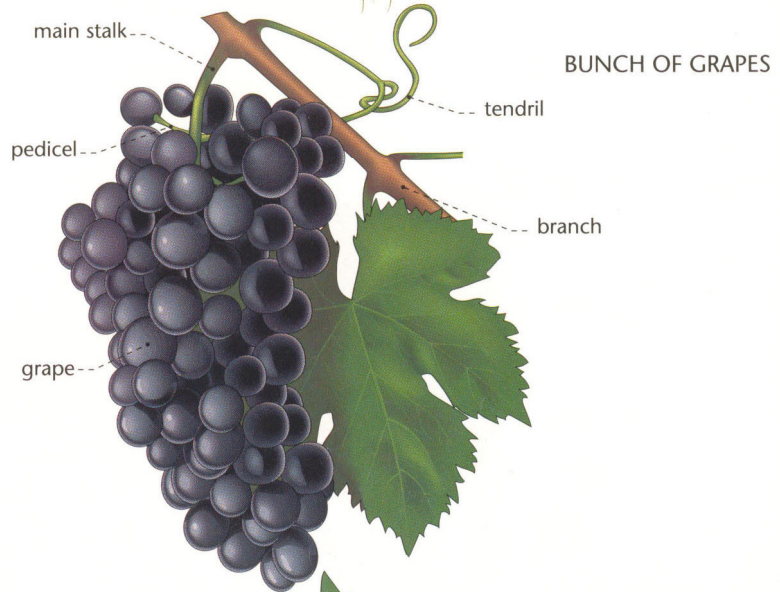
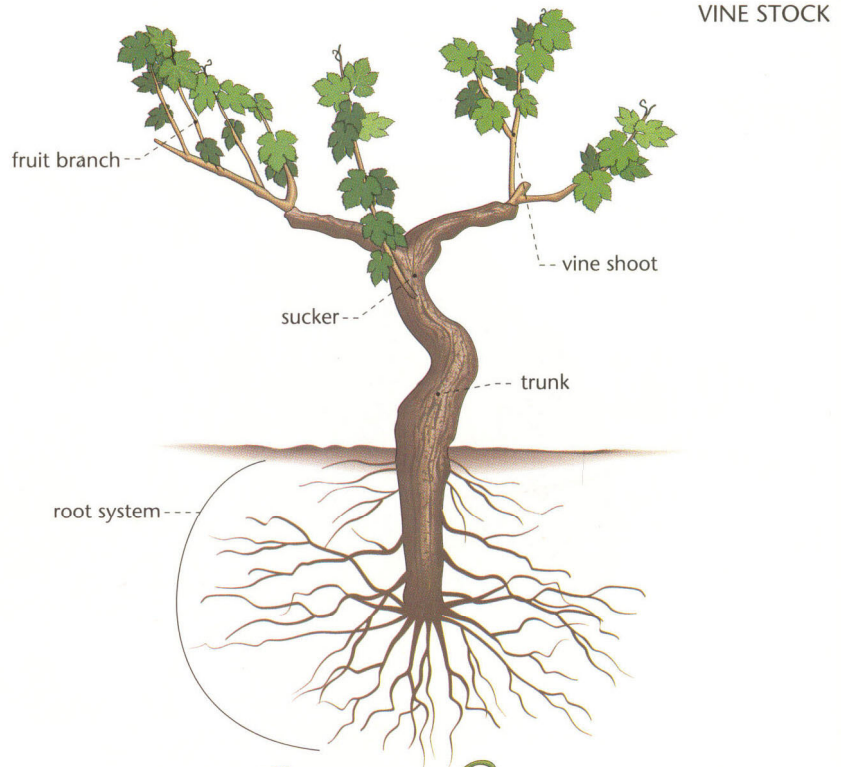
fruition



ripening

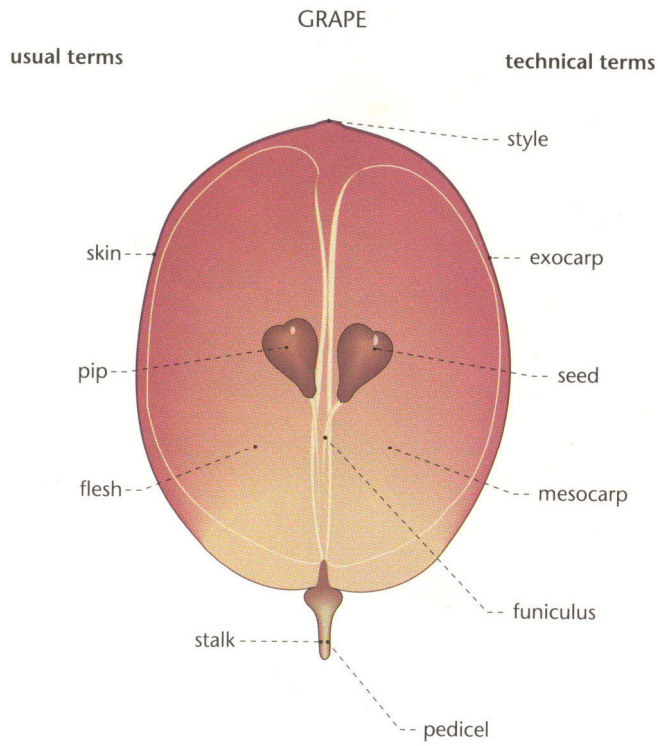


ripeness

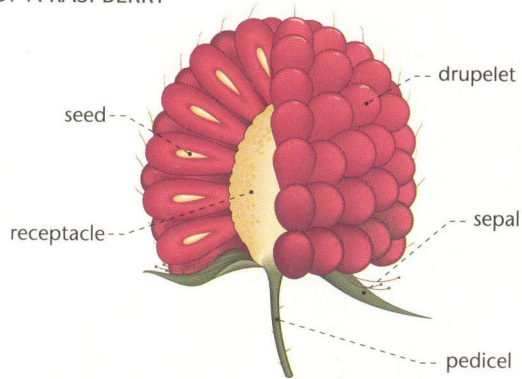


FLESHY FRUITS: BERRY FRUITS

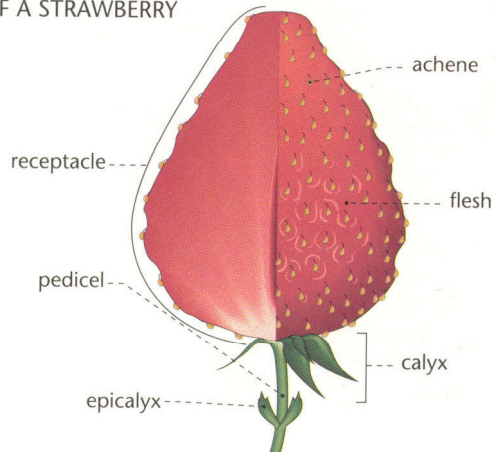
SECTION OF A BERRY



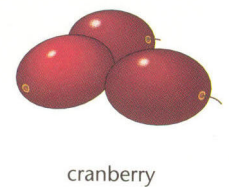
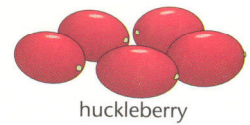
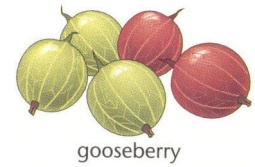
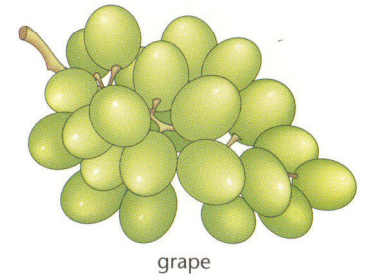
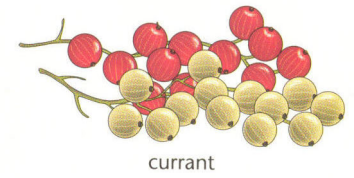
SECTION OF A RASPBERRY



SECTION OF A STRAWBERRY

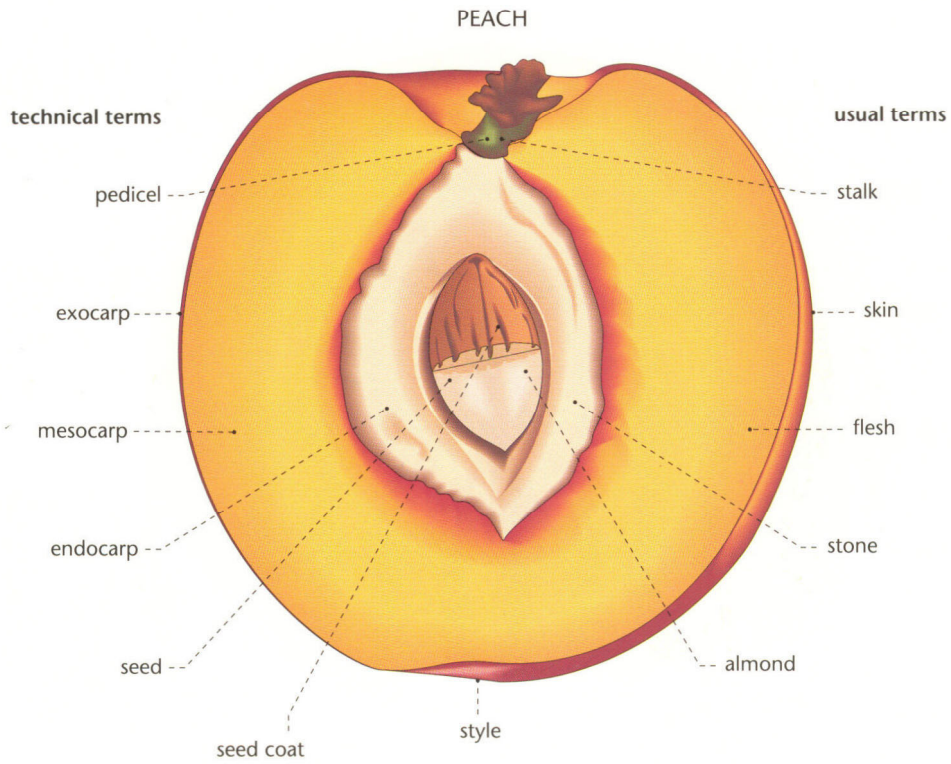


MAJOR TYPES OF BERRIES

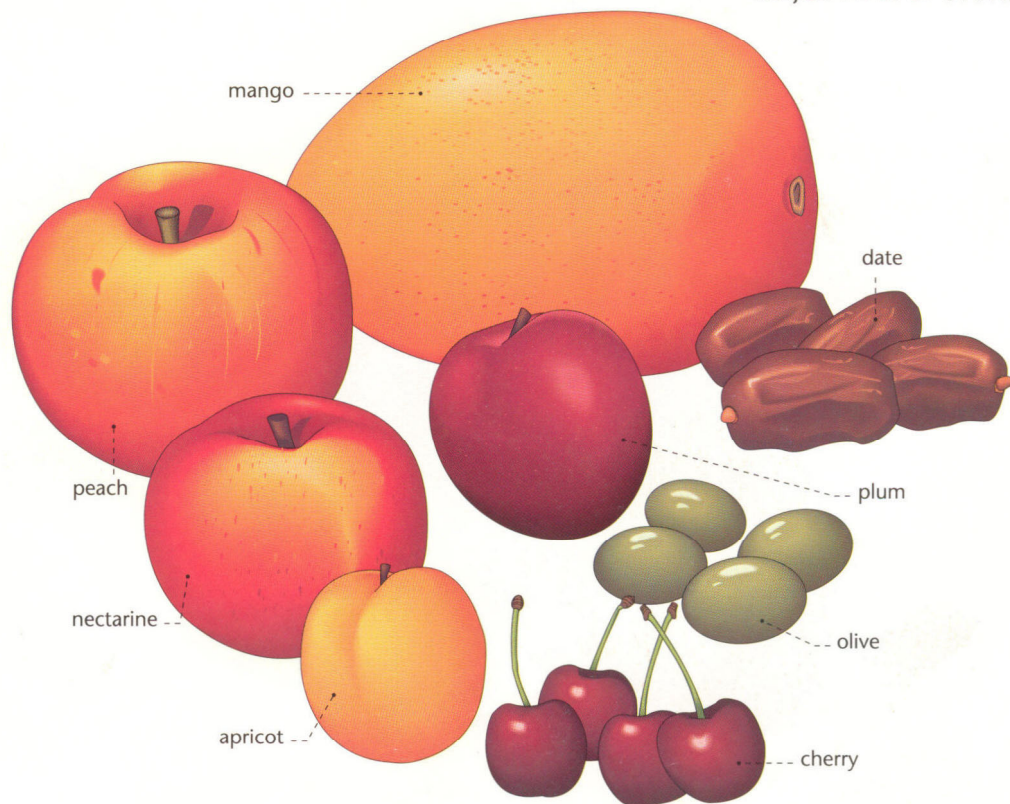


STONE FLESHY FRUITS

SECTION OF A STONE FRUIT

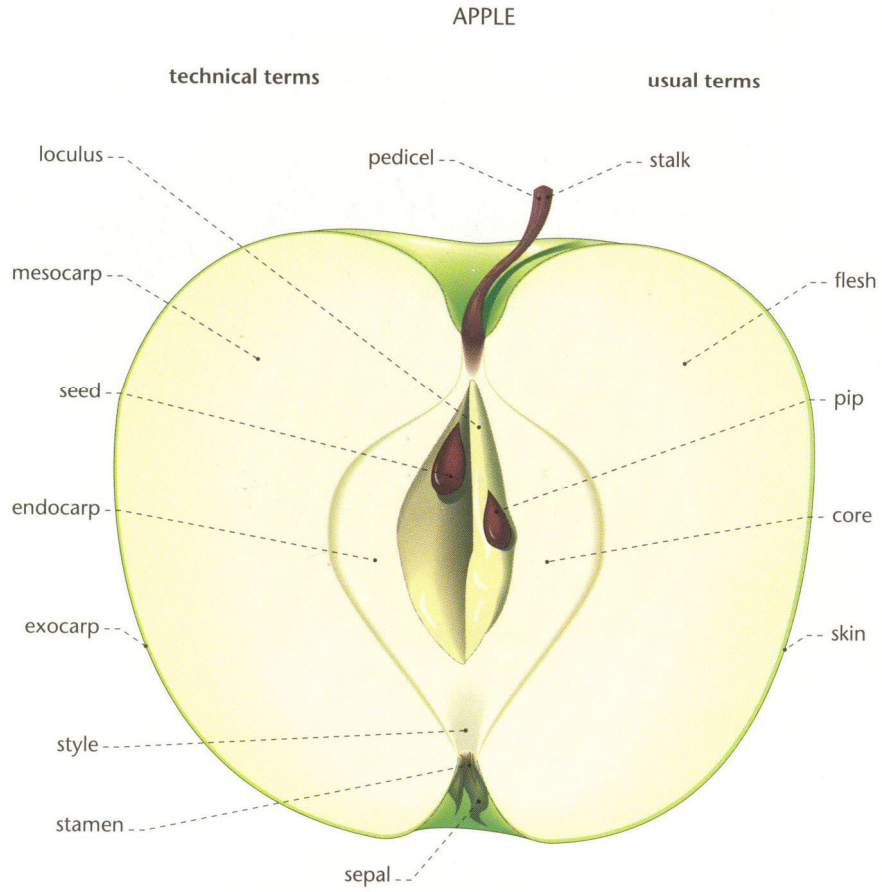


MAJOR TYPES OF STONE FRUITS

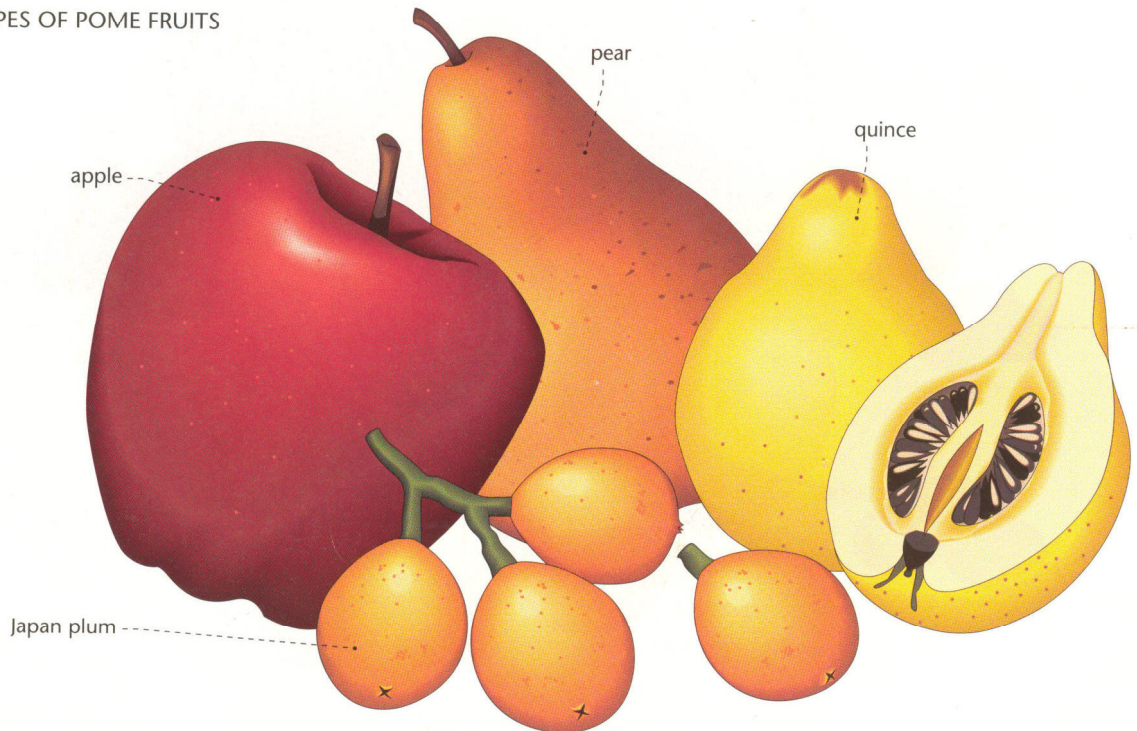


POME FLESHY FRUITS

SECTION OF A POME FRUIT

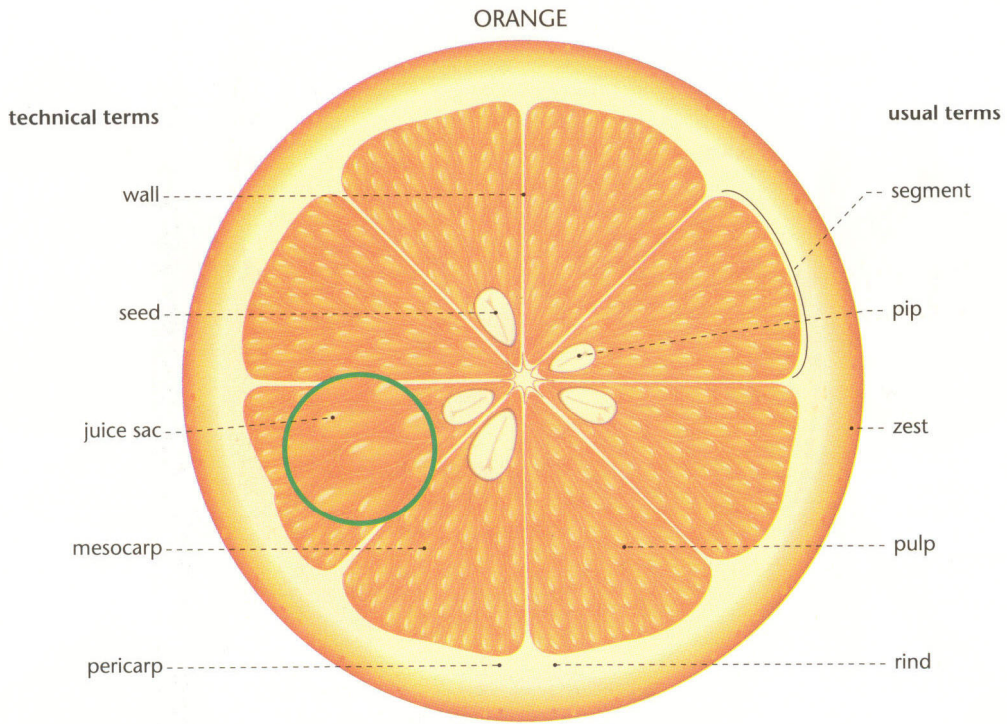


MAJOR TYPES OF POME FRUITS

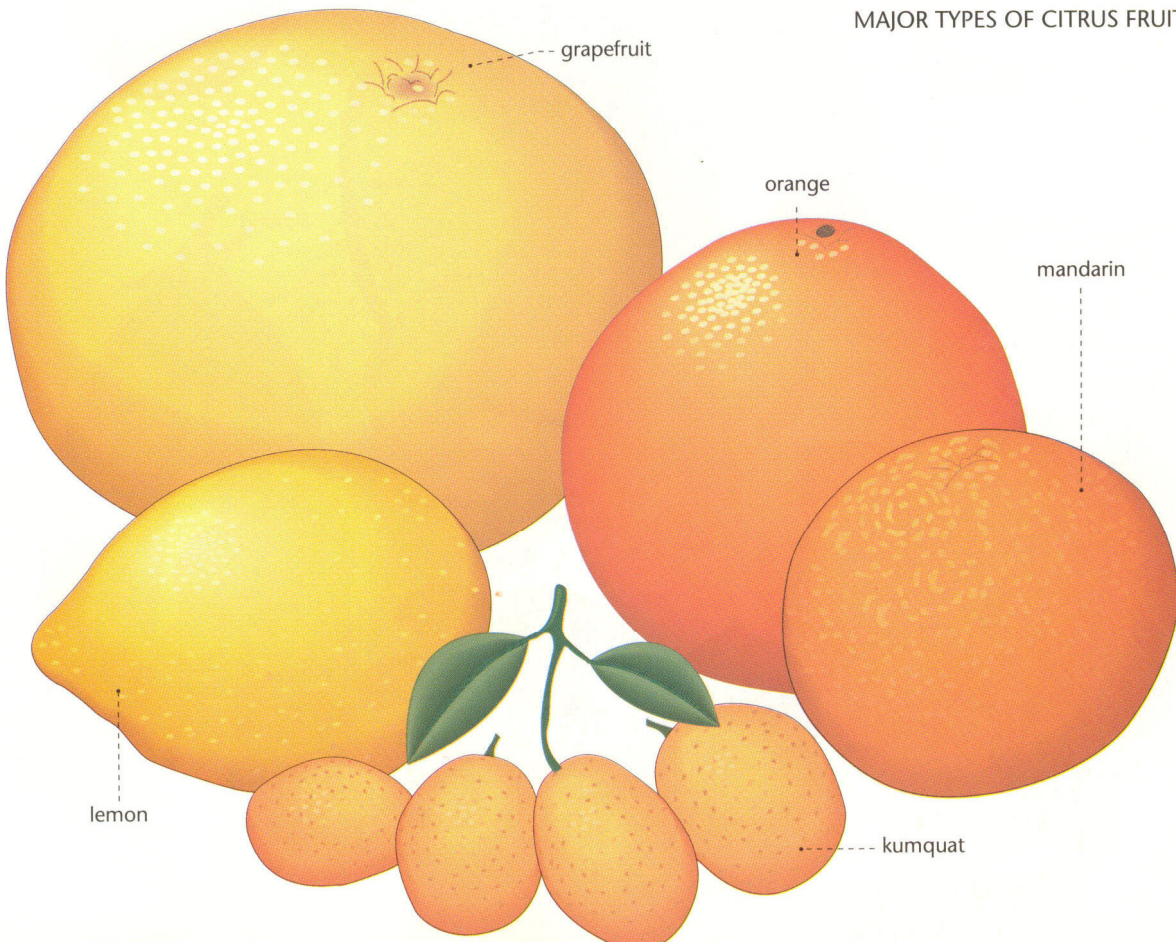


FLESHY FRUITS: CITRUS FRUITS

SECTION OF A CITRUS FRUIT

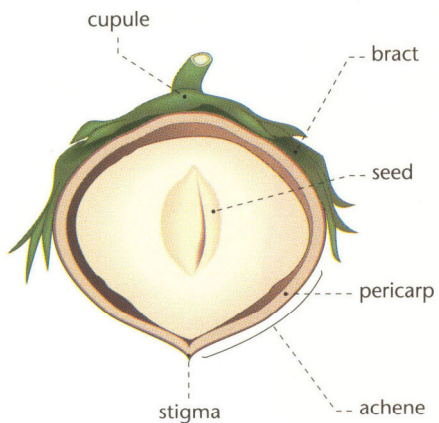


MAJOR TYPES OF CITRUS FRUITS

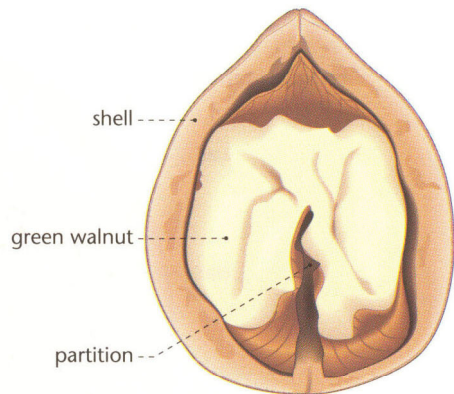


DRY FRUITS: NUTS

SECTION OF A HAZELNUT

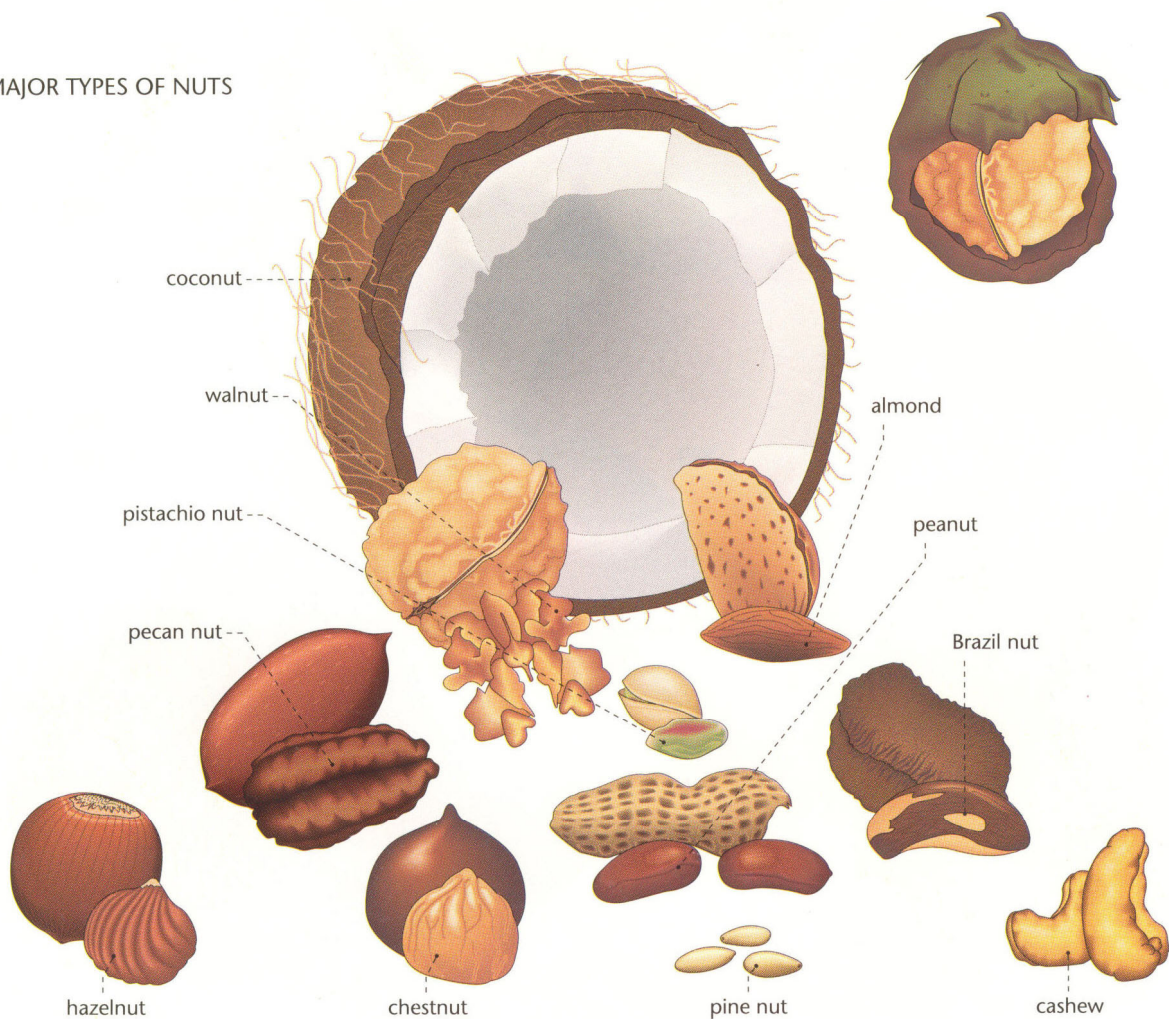


SECTION OF A WALNUT

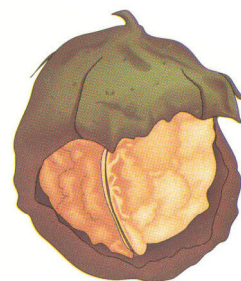


VEGETABLE KINGDOM

MAJOR TYPES OF NUTS

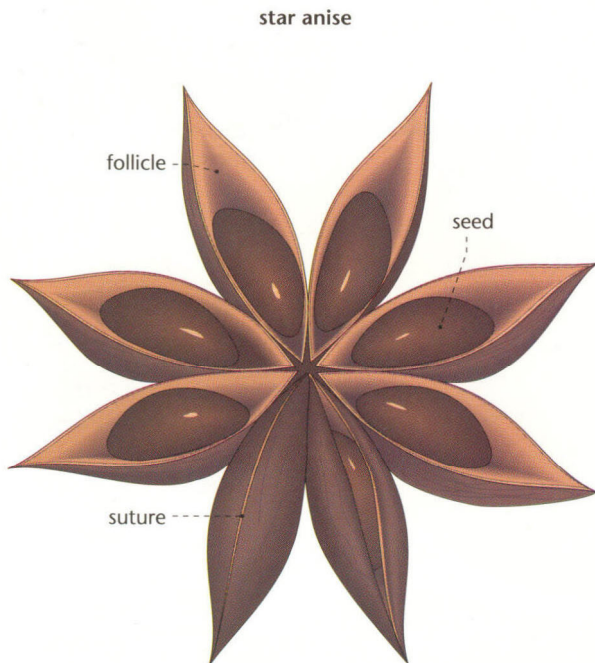


HUSK

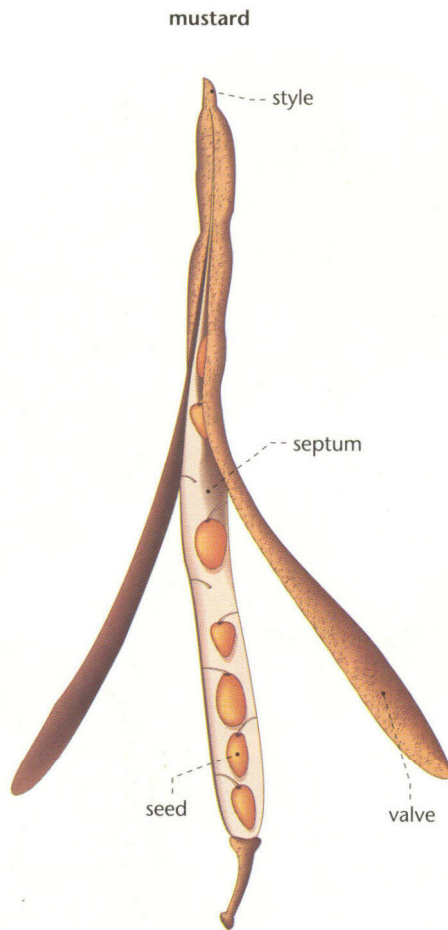


VARIOUS DRY FRUITS

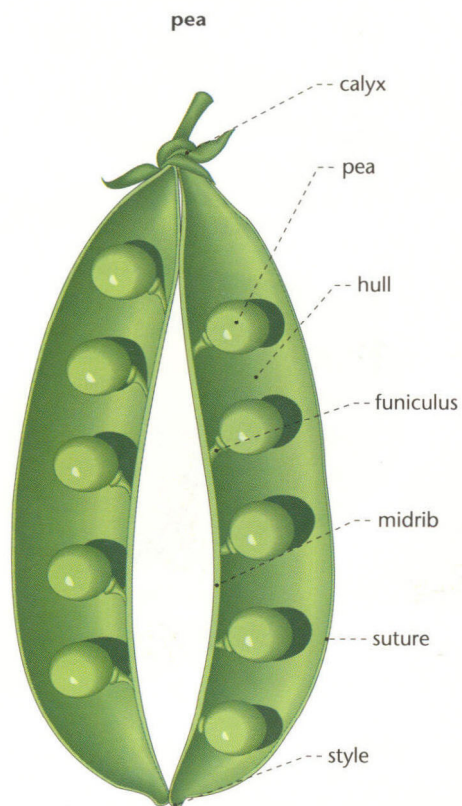
SECTION OF A FOLLICLE



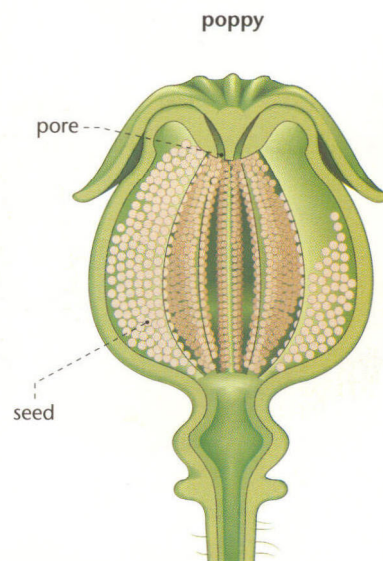
SECTION OF A SILIQUE



SECTION OF A LEGUME

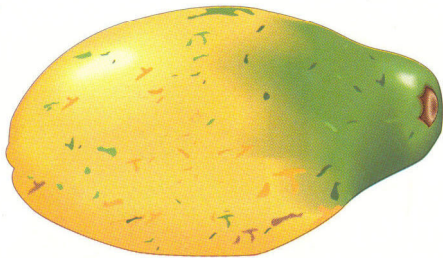


SECTION OF A CAPSULE

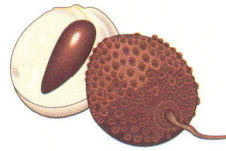


TROPICAL FRUITS

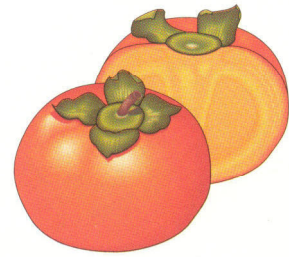
MAJOR TYPES OF TROPICAL FRUITS



papaya



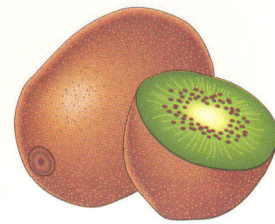
litchi



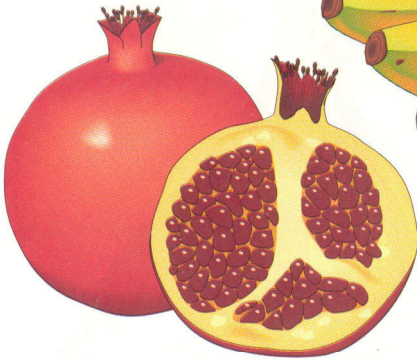
Japanese persimmon



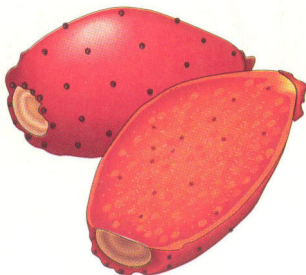
banana



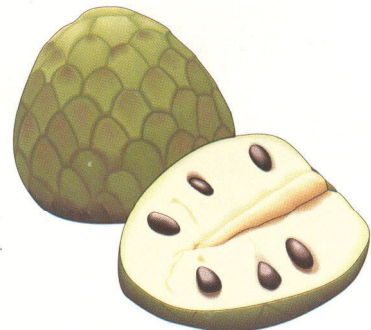
kiwi



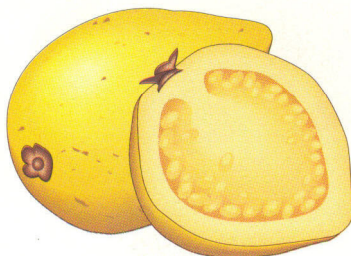
pomegranate



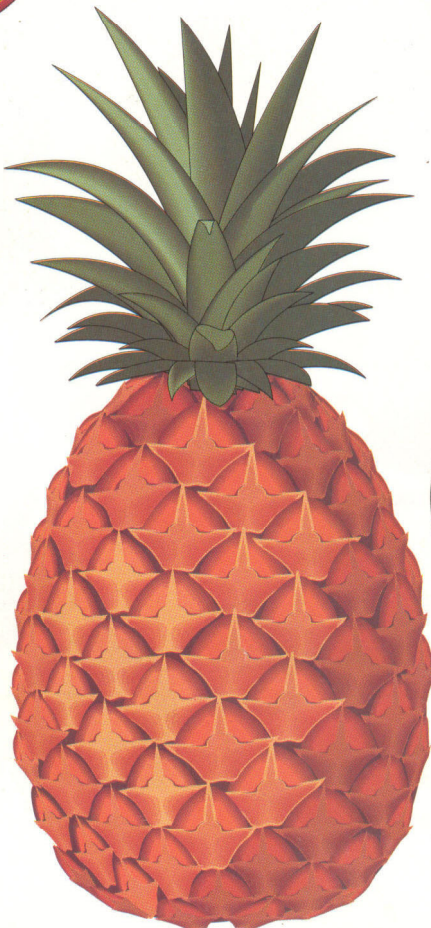
Indian fig



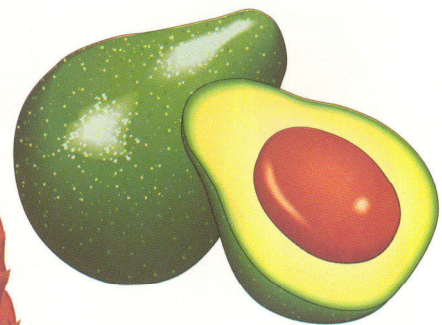
cherimoya



guava



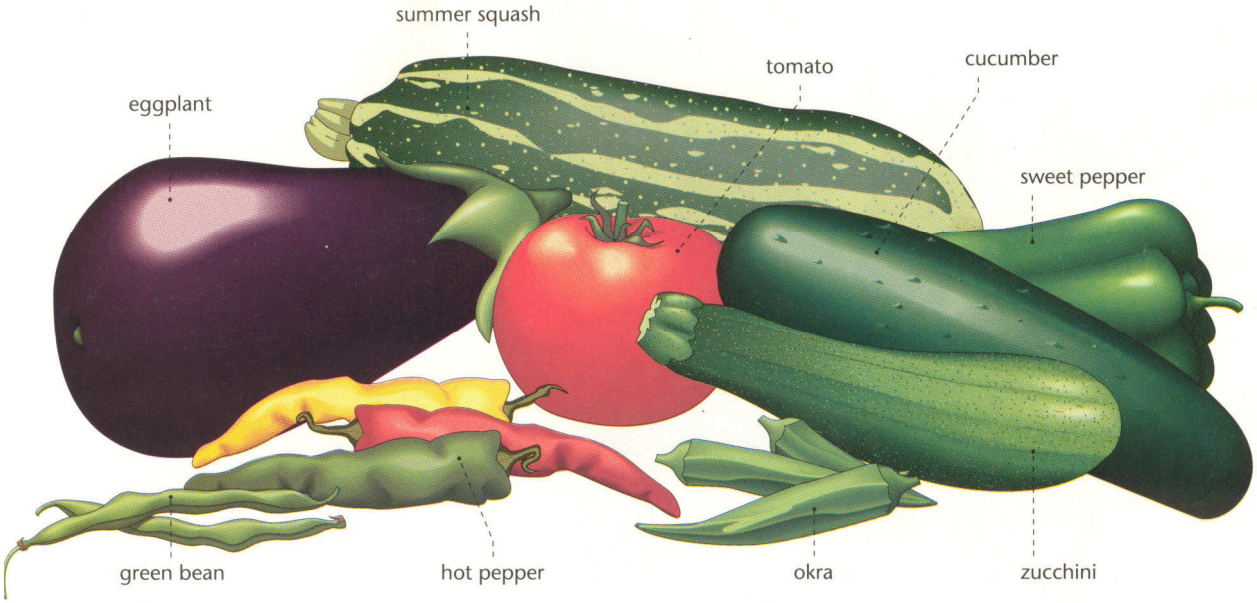
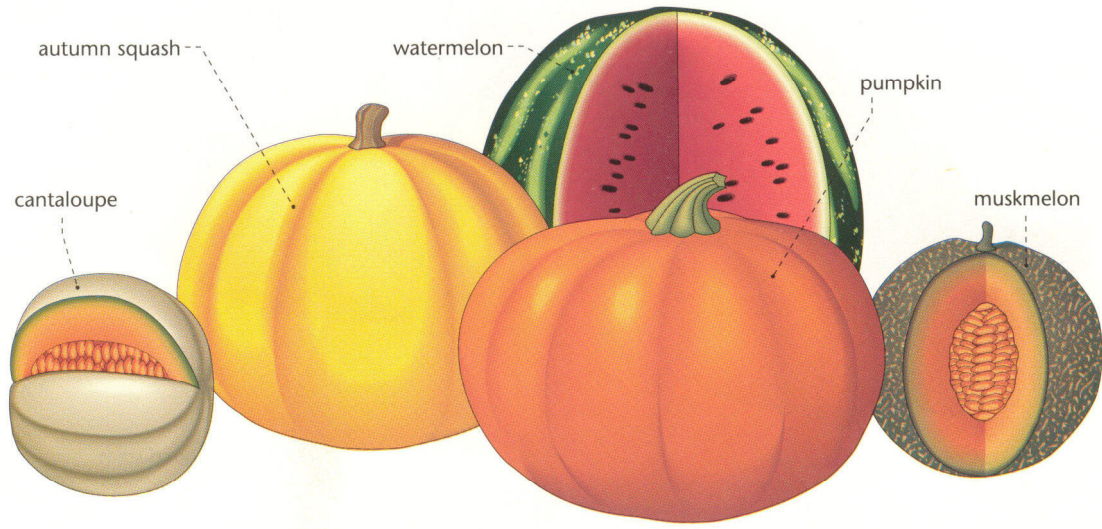
pineapple



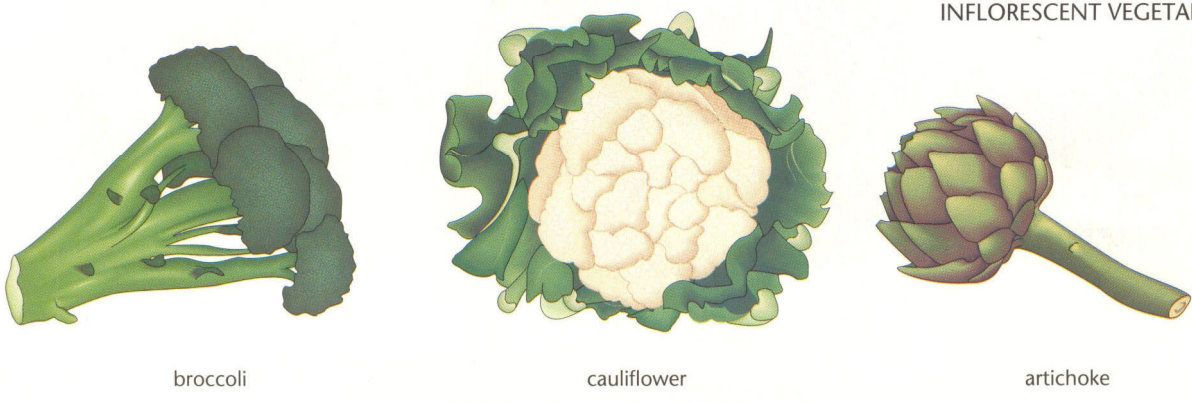
avocado

VEGETABLES

FRUIT VEGETABLES

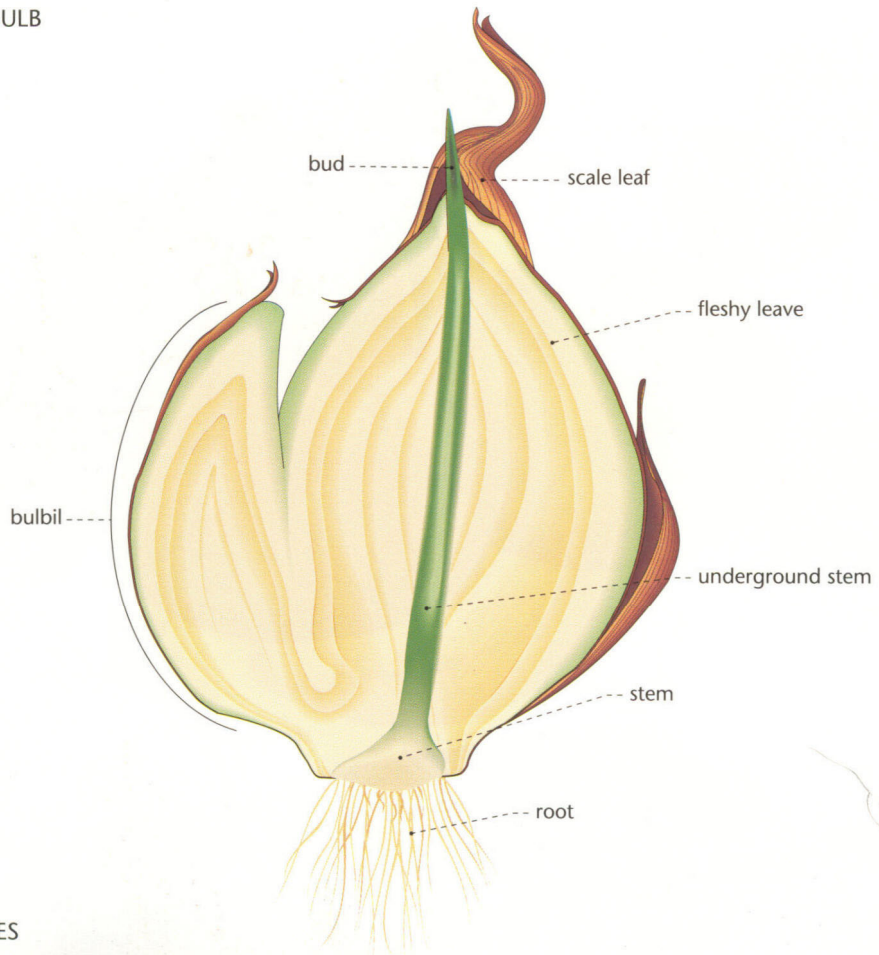


INFLORESCENT VEGETABLES

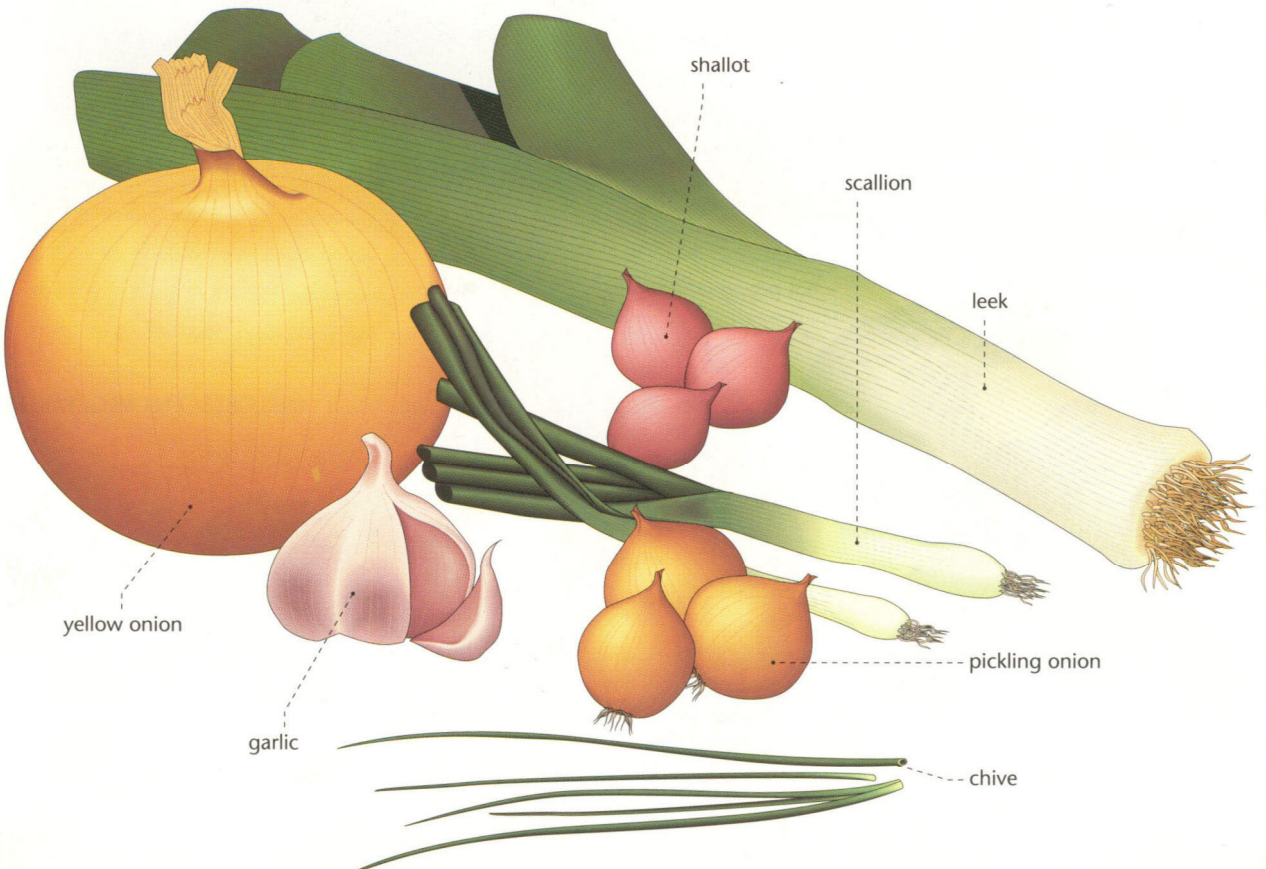


VEGETABLES

SECTION OF A BULB

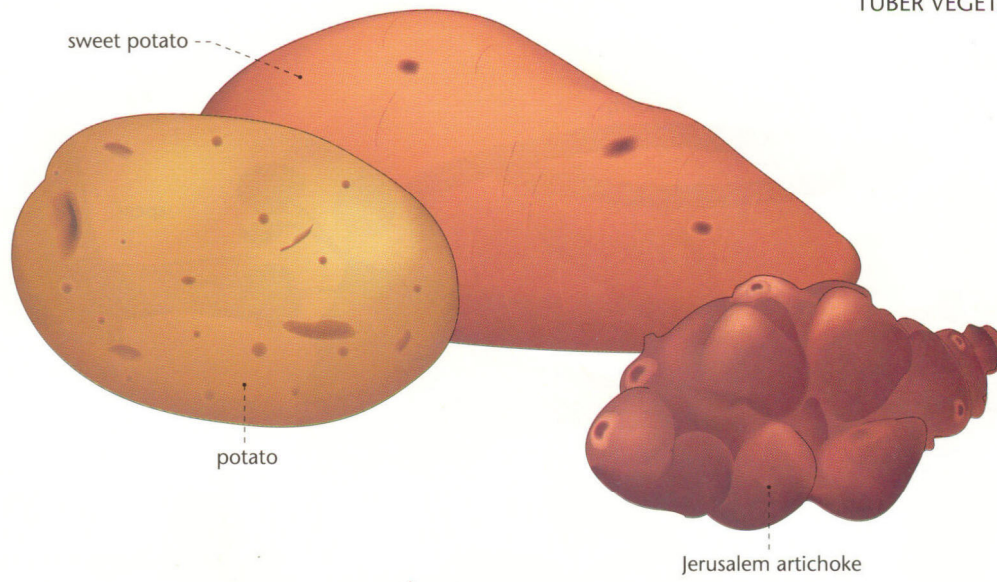


BULB VEGETABLES

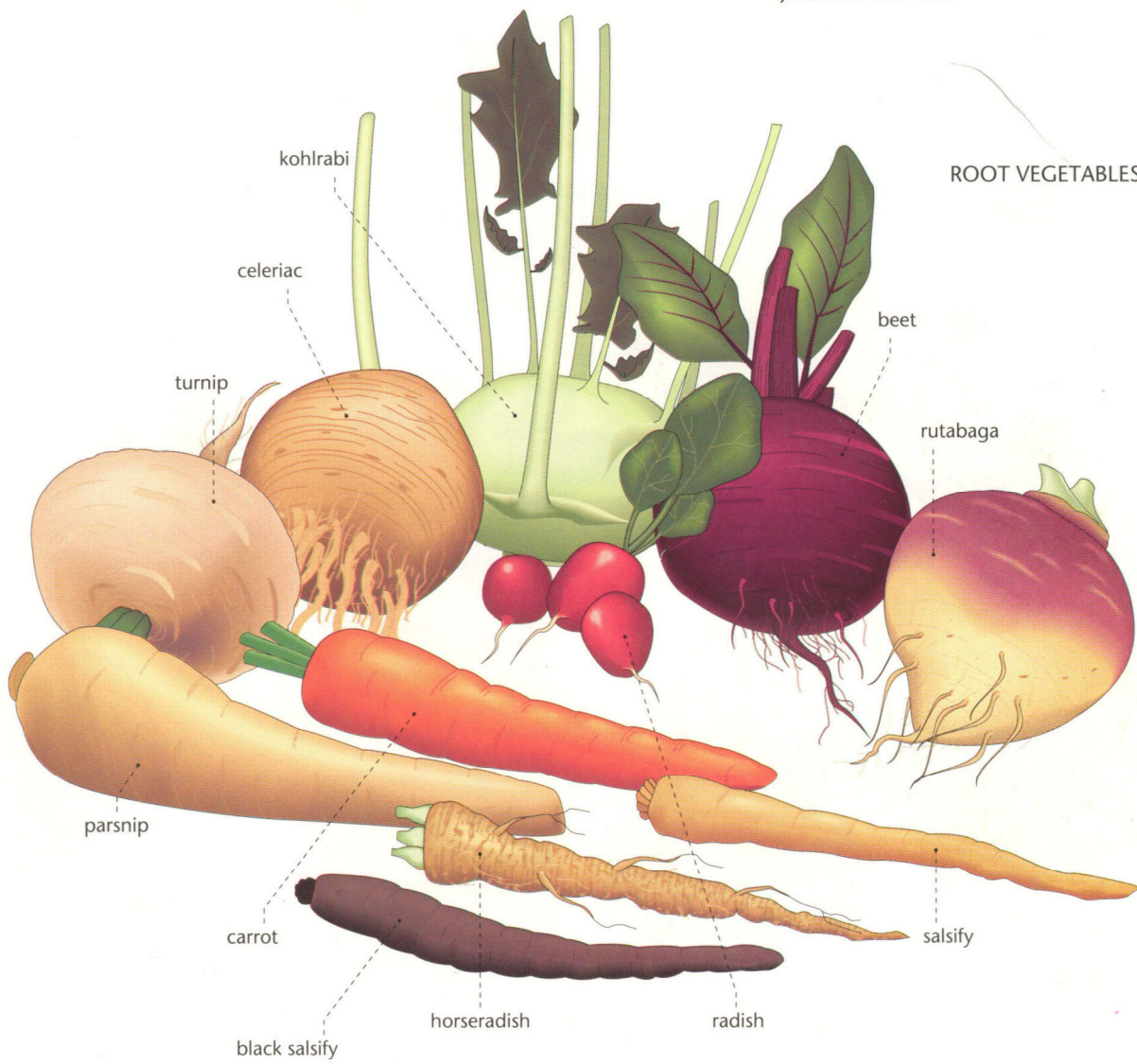


VEGETABLES

TUBER VEGETABLES

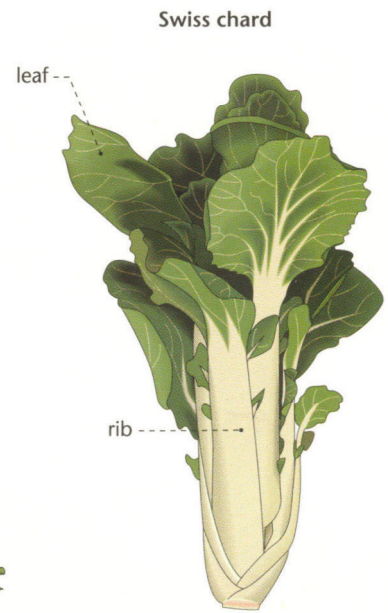
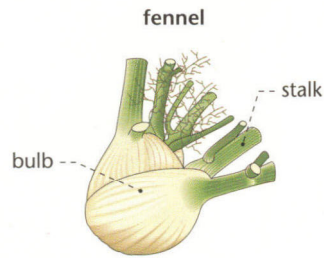
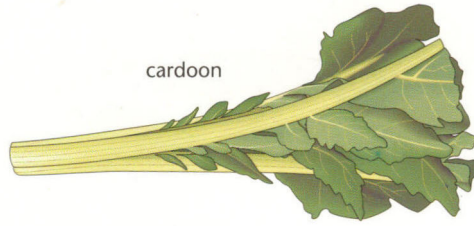
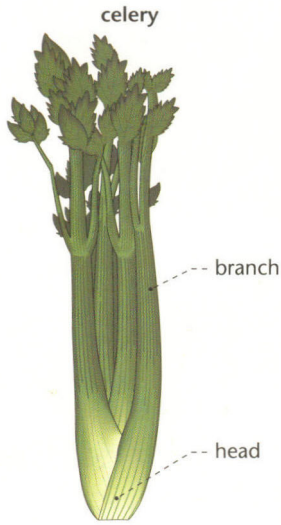
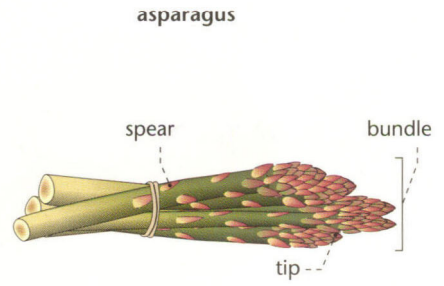
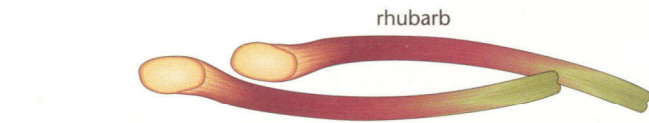


ROOT VEGETABLES

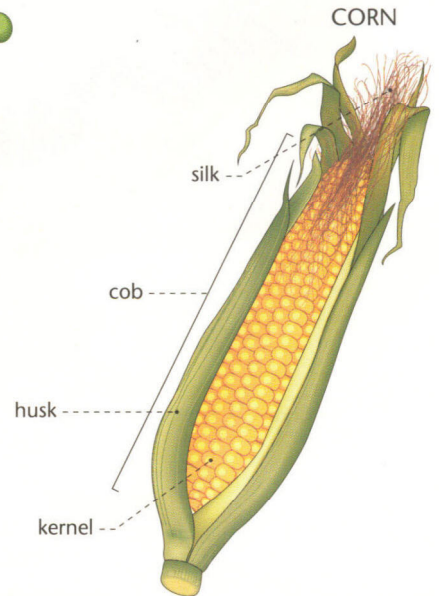
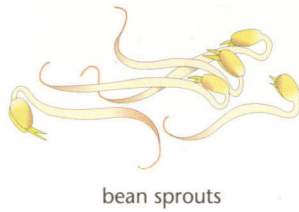
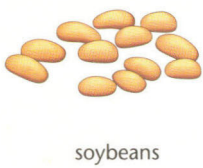
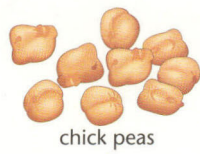
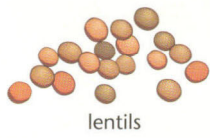
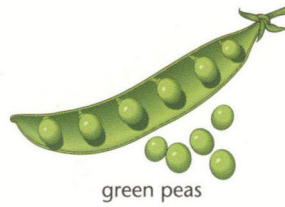
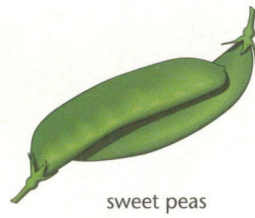
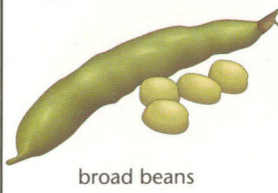


VEGETABLES

STALK VEGETABLES



SEED VEGETABLES



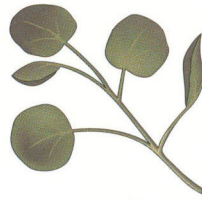
VEGETABLES



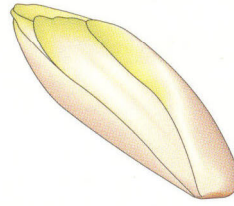
LEAF VEGETABLES



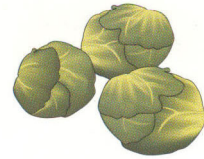
corn salad



watercress



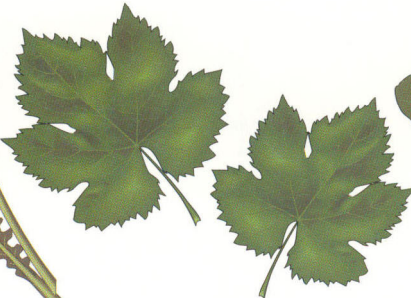
chicory



Brussels sprouts



curled kale



grape leaf



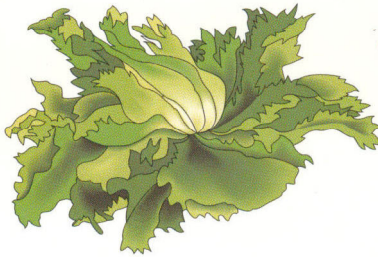
garden sorrel



spinach



curled endive



broad-leaved endive



romaine lettuce



dandelion



white cabbage



cabbage lettuce



green cabbage



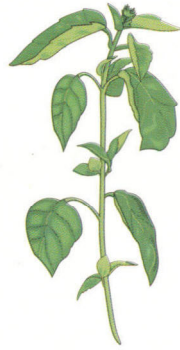
Chinese cabbage



HERBS



dill



basil



borage



chervil



coriander



tarragon



hyssop



sweet bay



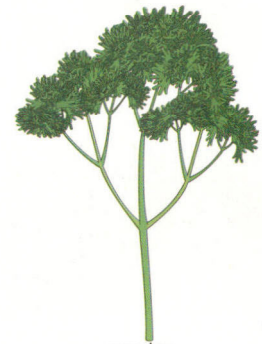
lovage



mint



oregano



parsley



rosemary



savory



sage



thyme