

# **MAGNIFICENT JEWELLERY**

WHICH FORMED PART OF

## **The Russian State Jewels**

**On WEDNESDAY, MARCH 16, 1927**



CATALOGUE

OF

AN IMPORTANT ASSEMBLAGE OF

# MAGNIFICENT JEWELLERY

Mostly dating from the 18th Century

WHICH FORMED PART OF

## The Russian State Jewels

And which have been purchased by a Syndicate  
in this Country

They are now Sold in order to close the  
Partnership Account

WHICH

Will be Sold by Auction by

**MESSRS. CHRISTIE, MANSON & WOODS**

(L. HANNEN, C.B.E., W. B. ANDERSON, CAPT. V. C. W. AGNEW,  
L. G. HANNEN, AND T. M. MCKENNA)

**AT THEIR GREAT ROOMS**

8 KING STREET, ST. JAMES'S SQUARE  
LONDON

**On WEDNESDAY, MARCH 16, 1927**

AT ONE O'CLOCK PRECISELY

---

May be viewed Two Days preceding, and Catalogues had,  
at Messrs. CHRISTIE, MANSON AND WOODS' Offices, 8 *King Street,*  
*St. James's Square, London, S.W.1*

## CONDITIONS OF SALE.

- I. THE highest Bidder to be the Buyer; and if any dispute arise between two or more Bidders, the Lot so in dispute shall be immediately put up again and re-sold.
- II. No person to advance less than 1s. ; above Five Pounds, 5s. ; and so on in proportion.
- III. In the case of Lots upon which there is a reserve, the Auctioneer shall have the right to bid on behalf of the Seller.
- IV. The Purchasers to give in their Names and Places of Abode, and to pay down 5s. in the Pound, or more, in part of payment, or the whole of the Purchase-Money, *if required*; in default of which, the Lot or Lots so purchased to be immediately put up again and re-sold.
- V. The Lots to be taken away and paid for, whether genuine and authentic or not, with all faults and errors of description, at the Buyer's expense and risk, within Two Days from the Sale; Messrs. CHRISTIE, MANSON AND WOODS not being responsible for the correct description, genuineness, or authenticity of, or any fault or defect in, any Lot, and making no warranty whatever.
- VI. To prevent inaccuracy in delivery, and inconvenience in the settlement of the Purchases, no Lot can on any account be removed during the time of Sale; and the remainder of the Purchase-Money must absolutely be paid on the delivery.
- VII. Upon failure of complying with the above Conditions, the Money deposited in part of payment shall be forfeited; all Lots un-cleared within the time aforesaid shall be re-sold by public or private Sale, and the deficiency (if any) attending such re-sale shall be made good by the defaulter at this Sale.

# CATALOGUE.

On WEDNESDAY, MARCH 16, 1927,

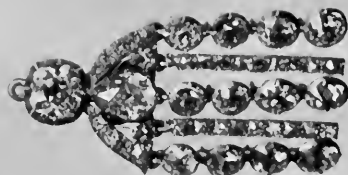
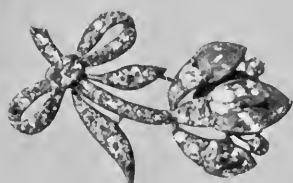
AT ONE O'CLOCK PRECISELY.

## JEWELS.

- 1 A GARNET SUITE, consisting of a long necklace with pendant cross, a pair of four-row bracelets, and two chains, gold-mounted
- 2 A SMOKED CRYSTAL SUITE, consisting of a pair of two-row bracelets, a bracelet with drop, and a pair of ear-rings, gold-mounted
- 3 FIVE DITTO SHUTTLE-SHAPED HAIR-ORNAMENTS, twelve shuttle-shaped pins, and six circular ditto
- 4 A GARNET SUITE, consisting of a four-row necklace, a single-row necklace, a cluster-pattern necklace, a pair of bracelets, three buckles, and six clasps
- 5 A CHRYSOPHASE SUITE, with diamond borders, consisting of a necklace, a pair of ear-rings, and six pins
- 6 A RUBY AND ROSE-DIAMOND CHATELAINÉ HOOK; and a gold buckle, set with four diamonds
- 7 TWO OLIVINE AND DIAMOND FLY PINS; and a rose-diamond pin, with star-shaped top
- 8 A TURQUOISE AND DIAMOND FORGET-ME-NOT BRACELET
- 9 A PAIR OF SAPPHIRE AND DIAMOND SQUARE SHOE-BUCKLES

- 10 A PAIR OF SAPPHIRE AND DIAMOND FLOWER-SPRAY BROOCHES
- 11 A PAIR OF RUBY AND BRILLIANT CLUSTER PINS
- 12 A PAIR OF RIVER PEARL AND AGATE BRACELETS, with gold clasps
- 13 A SET OF THREE DIAMOND PINS, of scroll design, the largest having an oval centre stone
- 14 A BRACELET, with oval links, with blue enamel centres and diamond borders, set in diamond with the initial N and the inscription " Le 23 Octobre 1815 "
- 15 A SAPPHIRE AND DIAMOND MARQUISE-SHAPED PIN
- 16 A SET OF THREE SINGLE BRILLIANT PINS
- 17 THREE CHAINS, composed of smoked crystal buttons, each set with a diamond in the centre
- 18 A PAIR OF BRACELETS, set with diamonds, sapphires, an amethyst, and other stones
- 19 A RUBY AND DIAMOND CLUSTER PIN
- 20 A LARGER DITTO
- 21 A PIN, with oblong spinel in diamond borders
- 22 A SET OF FIVE SAPPHIRE AND DIAMOND PINS, of flower design
- 23 A PAIR OF AMETHYST AND DIAMOND EAR-RINGS, with amethyst centres and diamond foliage-pattern borders







- 24 A PAIR OF DIAMOND CLASPS, of foliage design, with pear-shaped centre stones
- 25 A SET OF FOUR SHUTTLE-SHAPED DIAMOND SLIDES, with large centre stones
- 26 A SET OF THREE DIAMOND FLOWER-SPRAYS, mounted as pins
- 27 A PAIR OF AMETHYST AND DIAMOND EAR-RINGS, with cluster tops and pear-shaped drops
- 28 A PAIR OF PEARL AND DIAMOND PINS, of scroll design
- 29 A SET OF FOUR DIAMOND SLIDES, of scroll design, with cluster centres
- 30 A PEARL AND DIAMOND FLOWER-SPRAY PIN, with a drop pearl and pear-shaped brilliant
- 31 A PAIR OF DIAMOND TASSELS, with single-stone tops  
*See Illustration*
- 32 A PAIR OF DITTO
- 33 A PAIR OF DITTO
- 34 A PAIR OF DIAMOND SPRAYS, formed as fruit and ribands  
*See Illustration*
- 35 A PAIR OF DITTO  
*See Illustration*
- 36 A PAIR OF DIAMOND FLOWER-SPRAYS  
*See Illustration*
- 37 A SET OF THREE DITTO
- 38 A ROSE-DIAMOND BRACELET, of foliage and riband design

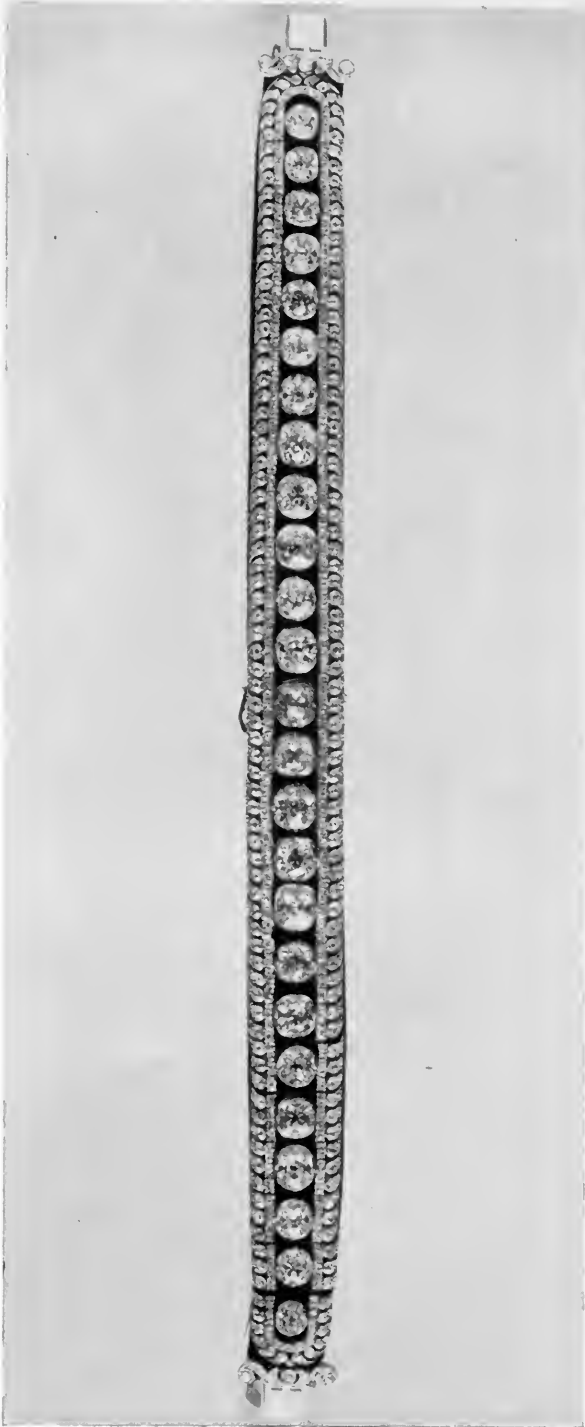
- 39 AN EMERALD AND DIAMOND PIN, of scroll design
- 40 A SMALLER DITTO, with oblong emerald in the centre
- 41 A DIAMOND NECKLACE, composed of fifteen oval links
- 42 A DIAMOND KNOT-OF-RIBAND ORNAMENT
- 43 A PEARL AND DIAMOND ORNAMENT, of riband design
- 44 A PAIR OF DIAMOND BRACELETS, with bands of foliage design and knot-of-riband centres, with large oval centre stones
- See Illustration*
- 45 A PAIR OF DIAMOND PENDANTS, of foliage and cluster design, with large centre stones and pear-shaped drops
- See Illustration facing p. 11*
- 46 A SET OF SIX DIAMOND PAVÉ BUTTONS, the backs dated 1764
- 47 AN EMERALD AND DIAMOND SQUARE CLASP
- 48 A SMALLER DITTO
- 49 AN OVAL DITTO
- 50 TWO EMERALD AND DIAMOND OBLONG CLASPS
- 51 A PEAR-SHAPED EMERALD AND DIAMOND DROP





- 52 SIX EMERALD AND DIAMOND CLUSTER BUTTONS AND CLASPS
- 53 A PEARL AND DIAMOND PIN, with three drop pearls
- 54 A DIAMOND PIN, formed as a spray of foliage
- 55 A PAIR OF PEARL AND DIAMOND EAR-RINGS, of riband design, each set with three pear-shaped and two drop pearls
- 56 AN ORNAMENT, formed as a bird and foliage, set with sapphires, rubies, emeralds and diamonds
- 57 AN EMERALD AND DIAMOND PIN, with pear-shaped emerald drop
- 58 A PEAR-SHAPED EMERALD PIN; and a cabochon emerald pin, with pearl drop
- 59 A DIAMOND KNOT-OF-RIBAND BROOCH, with cluster centre
- 60 THE STAR OF THE ORDER OF ST. CATHERINE, with red enamel centre, with diamond motto and crown surrounded by a circle of diamonds in border of diamond rays
- 61 THE BADGE IN DIAMONDS OF A MAID OF HONOUR, with the monogram of Catherine II. surmounted by a crown
- 62 "THE NUPTIAL CROWN": A crown entirely composed of double rows of fine brilliants in borders of smaller stones, and surmounted by a cross of six large brilliants, the whole on a setting of red velvet
- See Illustration*
- 63 A PAIR OF DIAMOND TASSELS, with single-stone tops
- 64 A PAIR OF DITTO
- 65 A PAIR OF DITTO

- 66 A SET OF THREE DIAMOND SPRAYS, formed as fruit and ribands
- 67 A SET OF THREE DITTO
- 68 A PAIR OF DIAMOND FLOWER-SPRAYS
- 69 A PAIR OF DITTO
- 70 A PAIR OF DITTO
- 71 A DIAMOND NECKLACE, composed of twenty-five graduated collet stones in foliage-pattern borders of smaller diamonds  
*See Illustration*
- 72 A PAIR OF AQUAMARINE AND DIAMOND LONG EAR-RINGS, with cluster tops and drops, and riband-pattern centres
- 73 A PAIR OF DITTO, nearly similar
- 74 A PAIR OF SINGLE DIAMOND EAR-RINGS
- 75 AN EMERALD AND DIAMOND CLASP, with a large oblong emerald in borders of small diamonds
- 76 ANOTHER, with a square emerald in diamond borders
- 77 TWO EMERALD AND DIAMOND OBLONG CLASPS, with oblong emeralds in borders of eight diamonds ; and a small ditto, nearly similar
- 78 A DIAMOND FLOWER-SPRAY ORNAMENT, composed of white and coloured stones, and mounted as a pin







- 79 FOUR AGATE AND DIAMOND EAR-RINGS, with riband-pattern centres
- 80 AN AMETHYST AND DIAMOND NECKLACE, with foliage-pattern centre; and a spray pin, en suite
- 81 A DIAMOND NECKLET, composed of oval and riband-pattern links
- 82 A RING, with a large brilliant in border of small diamonds, with chased gold hoop set with small diamonds and partly enamelled blue
- 83 A RUBY AND DIAMOND FLOWER-SPRAY ORNAMENT
- 84 AN EMERALD FOLIAGE-SPRAY ORNAMENT, mounted as a pin
- 85 A PAIR OF DIAMOND TASSELS, with single-stone tops
- 86 A PAIR OF DITTO
- 87 A PAIR OF DITTO
- 88 A PAIR OF DIAMOND FRUIT-SHAPED SPRAYS
- 89 A PAIR OF DITTO
- 90 A PAIR OF DITTO
- 91 A GREEN JASPER SNUFF-BOX, mounted with gold borders finely chased with flowers and foliage in varicoloured gold, in the style of the period of Louis XV., the panels and borders richly overlaid with baskets and sprays of flowers, trophies and foliage in white and fancy-coloured diamonds

*See Illustration*

- 92 FORTY-SIX SHUTTLE-SHAPED DIAMOND SLIDES,  
with flower-spray centres
- 93 A DIAMOND FLOWER-SPRAY BROOCH, with two large pear-  
shaped drops  
*See Illustration*
- 94 AN EMERALD AND BRILLIANT ORNAMENT, with  
two large square emeralds in brilliant scroll borders,  
mounted as a pin  
*See Illustration*
- 95 A PEARL AND DIAMOND ORNAMENT, designed as  
a spray of foliage, with pear-shaped diamond drops,  
three drop pearls and one bouton pearl  
*See Illustration*
- 96 A DIAMOND FLOWER-SPRAY ORNAMENT
- 97 FIVE SAPPHIRE DROPS, mounted as pins and pendants
- 98 FOUR OBLONG EMERALD CLASPS, with diamond borders
- 99 A PEARL AND DIAMOND FOLIAGE SPRAY ORNAMENT, with a  
large baroque pearl in the centre, and three drop pearls



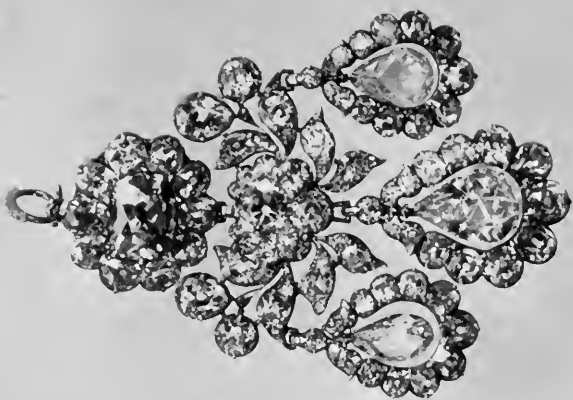
93



94



95



45

100

45

- 100 A MAGNIFICENT LARGE OVAL BRILLIANT, with fine rosy-white tint, mounted as a brooch, the setting engraved with the weight of the stone,  $40\frac{1}{3}\frac{2}{3}$  carats  
*An old Russian inventory states that the value of this stone was then 115,000 roubles*  
*See Illustration*
- 101 A PAIR OF DIAMOND TASSELS, with single-stone drops
- 102 A PAIR OF DITTO
- 103 A PAIR OF DITTO
- 104 A PAIR OF DIAMOND FOLIAGE-PATTERN SPRAYS
- 105 A PAIR OF DITTO
- 106 A PAIR OF DITTO
- 107 A DIAMOND PENDANT, with large oblong centre stone, and riband-pattern border of small diamonds

- 108 A MAGNIFICENT BROOCH, with diamond foliage-pattern groundwork, the top set with a superb emerald, an oblong spinel and two sapphires in the centre, and three large pear-shaped pearl drops

*See Illustration*

- 109 THREE EMERALD AND DIAMOND PINS, with emerald centres and diamond borders

- 110 A DIAMOND NECKLET, of foliage and riband design

- 111 A PEARL AND DIAMOND PIN, set with four pearls and a diamond cross

- 112 A PAIR OF DIAMOND TASSELS, with single-stone tops

- 113 A PAIR OF DITTO

- 114 A PAIR OF DITTO

- 115 A PAIR OF DITTO







- 116 A DIAMOND TIARA, designed as wheat-ears and foliage, and set with briolet and oval brilliants; the largest centre stone is a white sapphire  
*The Russian inventory states that the piece was added after the death of Marie Fedorovna, wife of Paul I.*  
*See Illustration*
- 117 A PEARL AND BRILLIANT TIARA, set with twenty-five large drop pearls in brilliant borders
- 118 A CAMEO PENDANT, with onyx cameo of Queen Victoria and Prince Consort in border of brilliants, with brilliant crown and loop

- 119 A COURT SWORD, the hilt and guard entirely composed of brilliants, with triangular partly blued steel blade, and leather sheath with diamond mounts  
*Said to have belonged to Paul I.*  
*See Illustration*
- 120 A FAN, with tortoiseshell sticks, the outer sticks set with the Russian Arms in fine brilliants with brilliant borders, the mount painted with views of a palace, by E. de Liphart
- 121 ANOTHER, with mother-o'-pearl sticks overlaid with gold, and the outside sticks richly studded with rubies, sapphire and diamonds, and with jewelled tassels attached, the mount painted with the Coronation of a Czar, and shipping on the Neva on the reverse, by G. Lassellaz
- 122 A LOUIS XVI. GOLD ÉTUI, chased with trophies and emblems, and with diamond thumb-piece
- 123 A LOUIS XVI. TABLET-CASE, with Vernis-Martin panels painted with garden scenes and arabesques on gold ground, and with gold borders chased with foliage





- 124 A GOLD CUP, COVER AND STAND, finely chased with foliage, and engraved with a Russian inscription stating that the cup was presented by the Government and people of St. Petersburg to General Ivan Petrovitch Soltykov in 1790—(*weight, 72 oz. 14 dwt.*)

FINIS

