

FISCHER AND PRUEFER

W. H. PRUEFER, *Successor*

144-158 PINE STREET
Providence, R. I.



Manufacturers of Fine Quality

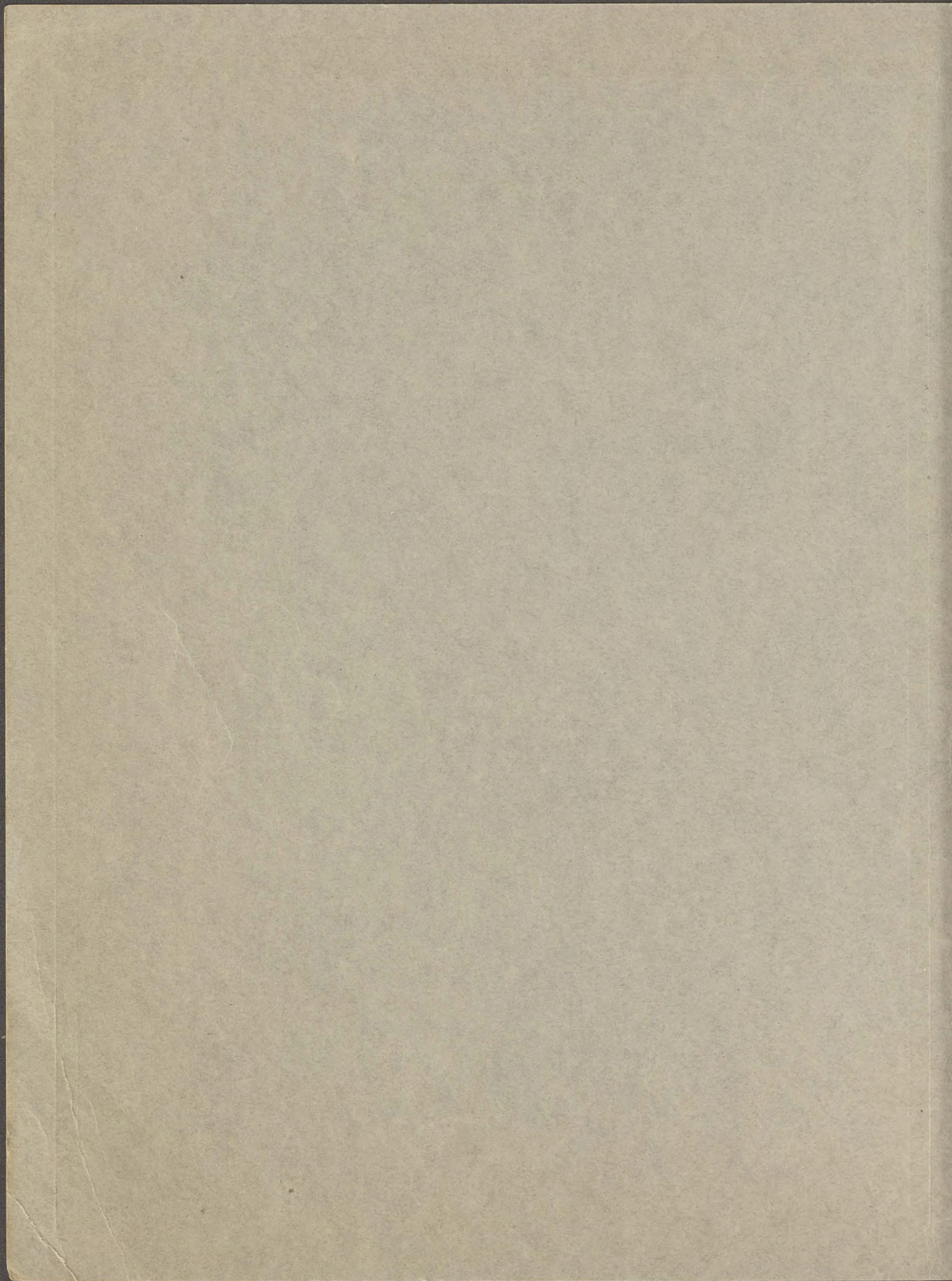
Beauty Pins, Ear Drops
Collar Buttons, Etc.



Issued exclusively for McLellan Stores Company

EDITION

1924



JSL
00056652

Foreword

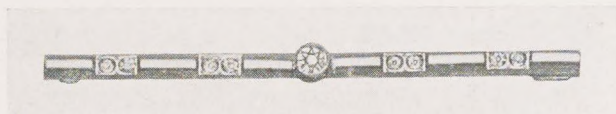
IN compiling this catalog of numbers selected by your Mr. Geo. B. Kay, you will be pleased to know that much space is given to items that need no further introduction as they have been used by you in large quantities for several past seasons.

This year's catalog, however, shows additional items in the line of ear drops and bar pins.

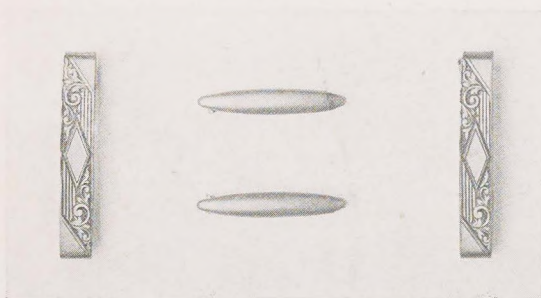
We endeavor to produce the cleanest merchandise possible and feel that our goods are second to none, and in some respects superior to any on the market.

Our whole organization is at your disposal to take care of your requirements. We guarantee prompt delivery in any quantity, maintaining at the same time the quality for which our goods are noted.

2/2025

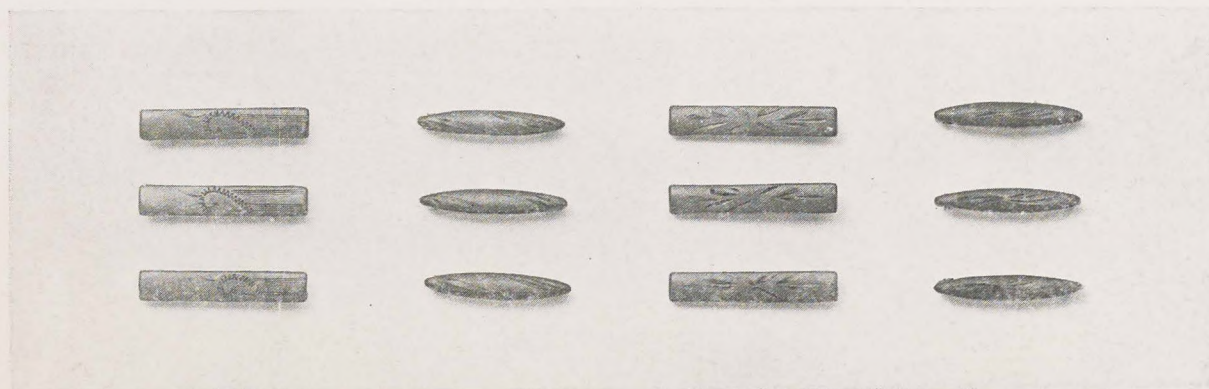


FP Narrow Bar Pins, Platinite Finish, set with one large and 8 small brilliants.



FP 145/271, Pair of narrow oval Beauty Pins and 2 Lingerie Clasps.

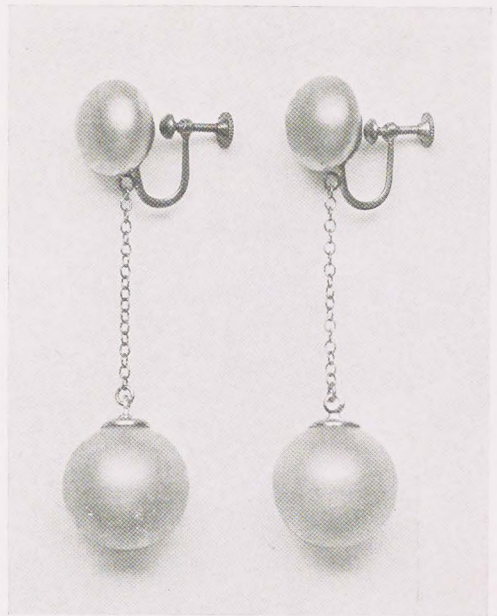
FP 72/3 Gold Plate Midget Pins, with tag, 3 on.



FP 44/ BEAUTY PINS, GOLD FILLED, Real Hand Engraved Designs, English finish, 3 on a card.



FP 195 Ball Drop, on chain, assorted colors, rondel in center.



FP 158 Pearl Button, with Pearl ball on chain.



FP 187, 4 Strand Chain Drop, cut beads and small pearls.



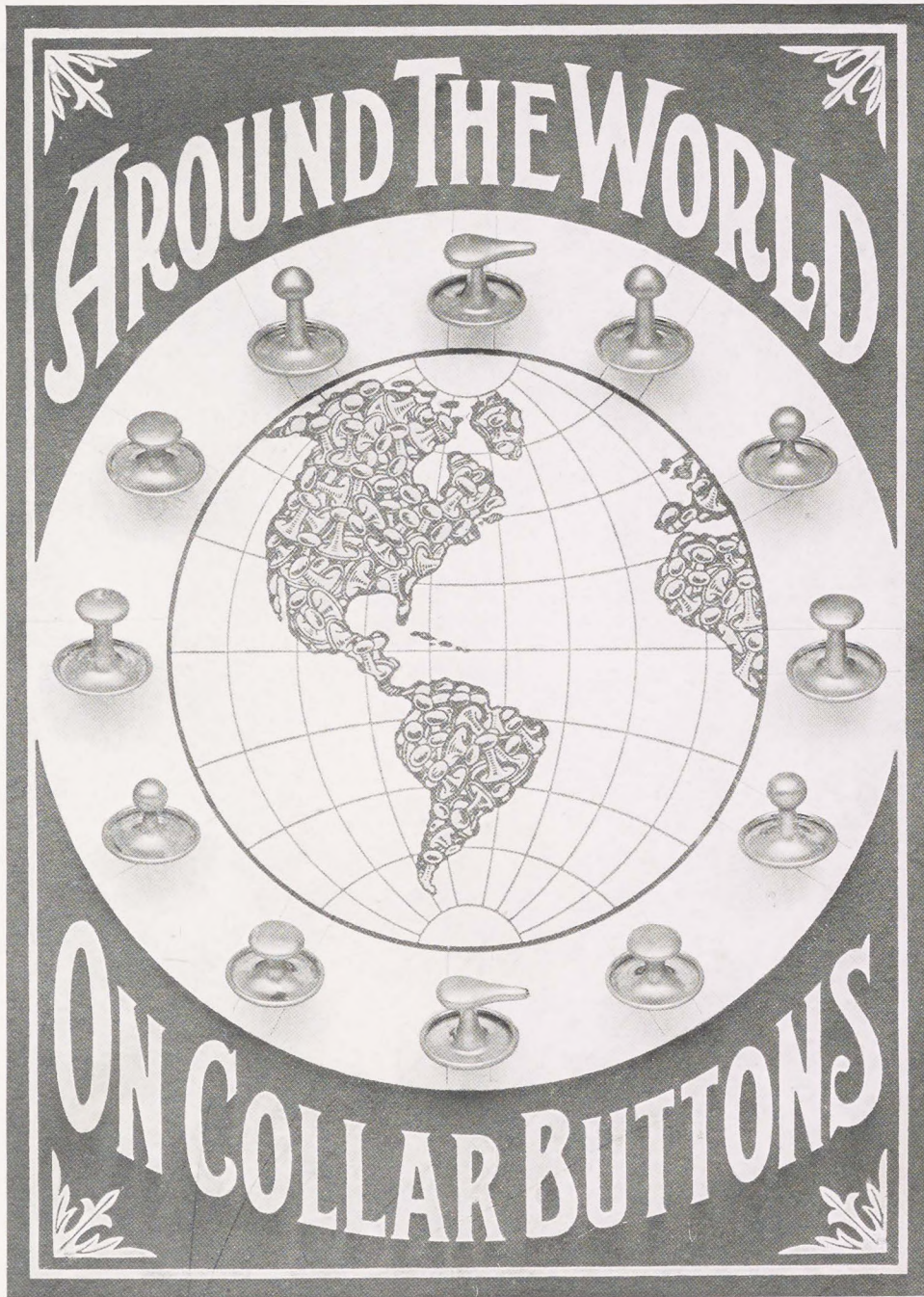
FP 624 Pearl Button, long cut, assorted color pendants.

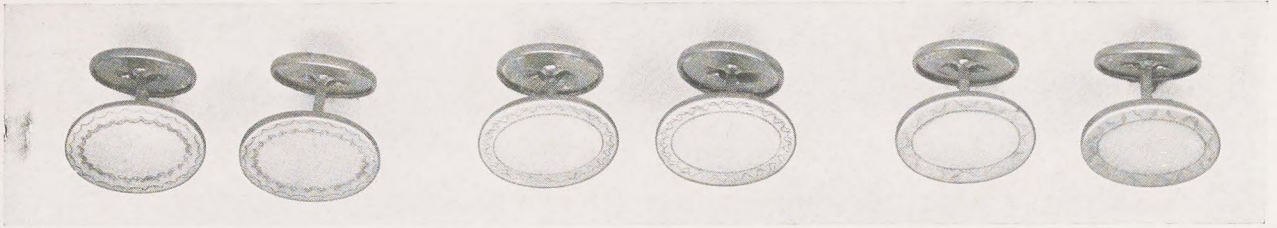


FP 625 Cut Jet Button, with long cut jet pendant

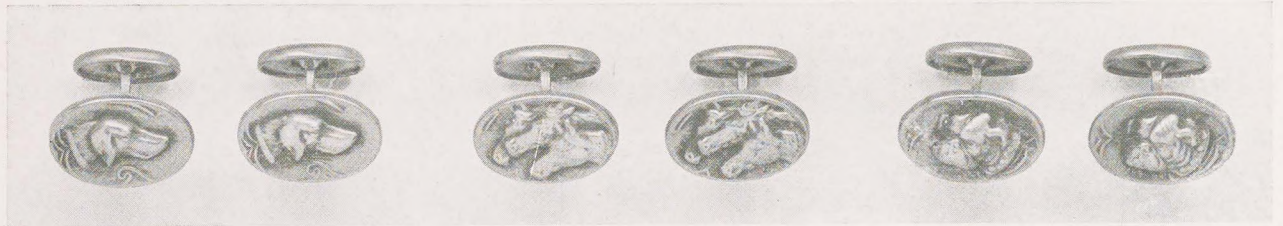


132/ 12 ASSORTED LAVALLIERS, with Fancy Stones, Baroque Pearl.

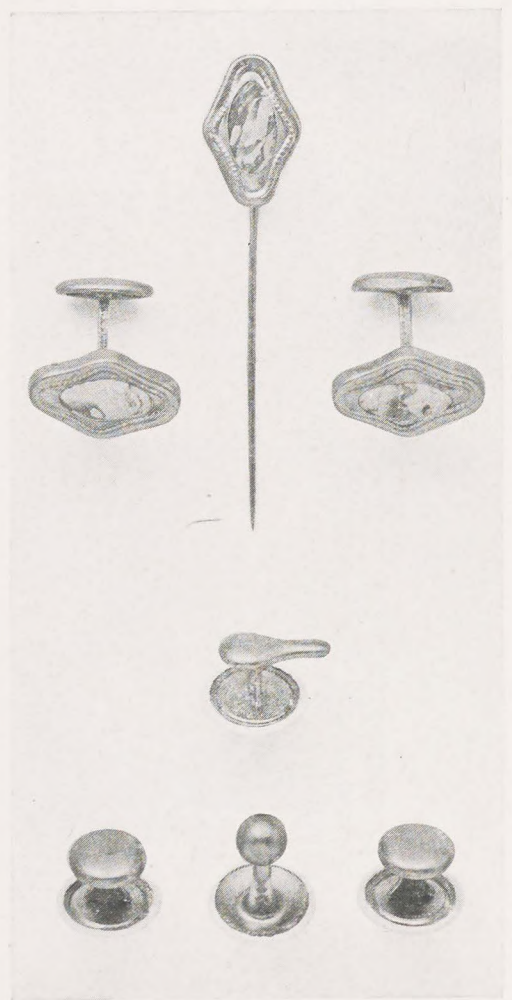
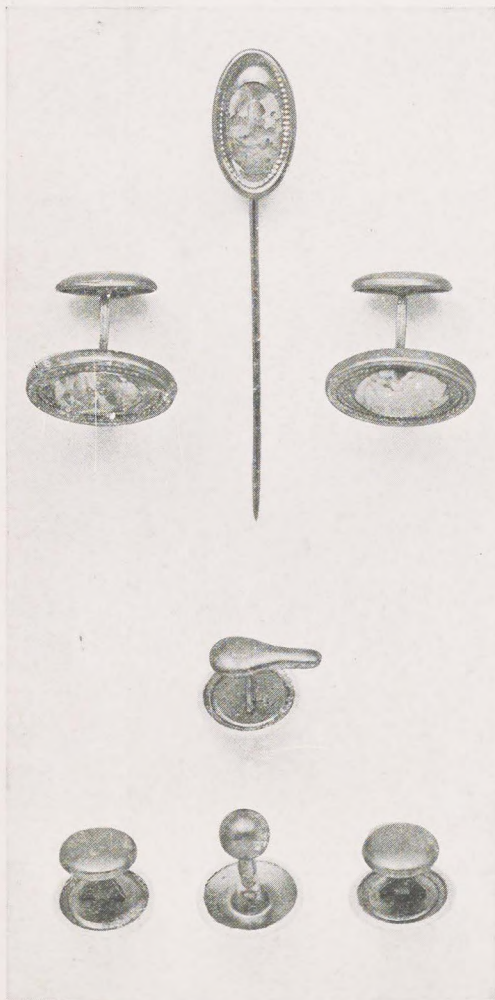




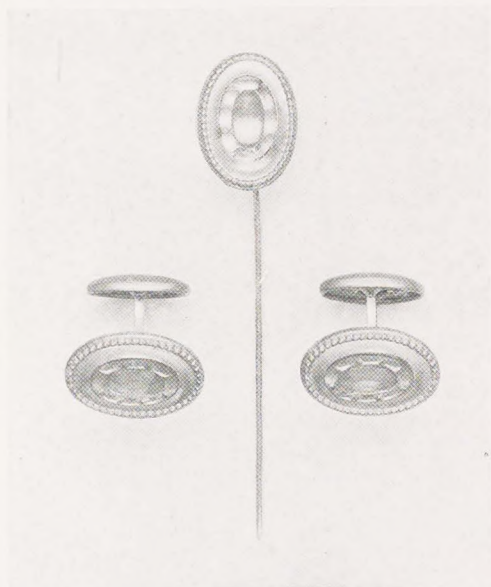
FP 149 LARGE ROUND LEVER, Old English finish, Hand Engraved or Engine turned.



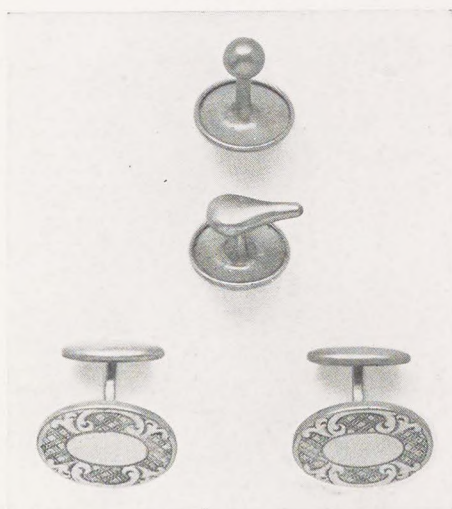
FP 166 Assortments of 3 patterns, Oxidized finish, SPORT LINKS.



FP 116 GENTLEMEN'S SETS. Lever End Links and Scarf Pin Set with Stone in Center. 4 Collar Buttons, 2 large levers, 1 ball top, 1 pointer.

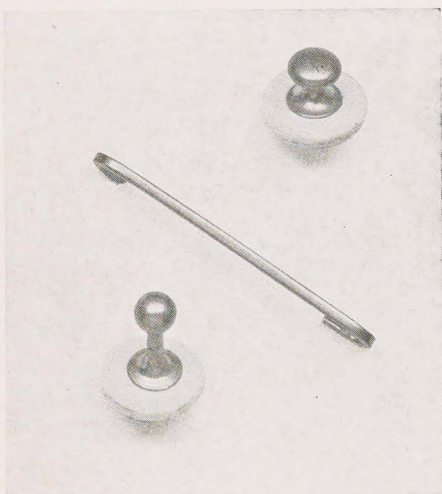


FP 156 Pair of LEVER LINKS and SCARF PIN, Oval Design, Assorted Colored Stone Centers.

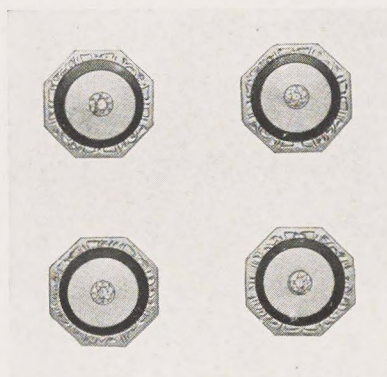
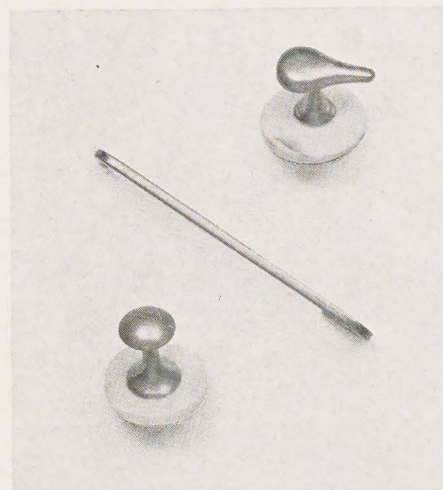


FP 45 CUFF LINKS and COLLAR BUTTON SETS, Gold Filled, Attractive Embossed Designs, Split Post Lever Ends. One piece Unbreakable Collar Button, English Finish (Assorted as Illustrated).

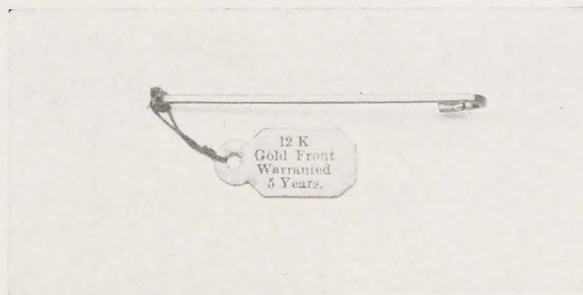




FP 147/ Old English finish COLLAR PIN, 1 Front, 1 Back Collar Button, Fresh Water Pearl Back.



FP 0703 Separable links with small brilliant center



FP 148/ Ascot Pin, 12Kt Rolled Gold Plate very narrow Old English Pin, 1½ and 1¼ inches long, beautifully Engraved or Engine Turned.

