

Client's Name
Street Address
City, State, Zip Code

Date: December 1, 2005

**One ladies platinum handmade diamond ring with eight prongs holding the major stone. Two tapered baguettes 3.75x2.84x7.5 & 3.71x2.9x7.5mm, weighing 1.53 carats total weight. Both stones are D-E in color, and VVS in clarity. One diamond, solely graded and certified by G.I.A. Gem Trade Laboratory as followed: Identification: One diamond, Emerald Cut, Measurements: 14.93 x 13.68 x 9.05 MM, Weight: 15.07 Carats, Depth: 66.2%, Table: 61%, Girdle: Thin, Culet: None, Polish: Good, Symmetry: Excellent, Clarity: Internally Flawless, Color: D, Fluorescence: none
G.I.A. Diamond Grading Report Number: 14434254
Store's Model #E99-18897**

\$1,500,000.00



Client's Name
Street Address
City, State, Zip Code

Date: December 4, 2006

One Ladies platinum, sapphire and diamond ring. One sapphire, certified by AGTA Gemological Testing Center (Report No. 99006308) and American Gemological Laboratories (Document No. CS 38082) as followed: Loose Stone, Blue color, Transparent, 3.398 carats, 8.37 x 7.59 x 5.79 mm, Cushion Antique Mixed Cut, (Mixed, brilliant crown), no indications of heating, Origin: Kashmir and set in 4 prongs. One diamond, solely graded by G.I.A. Gem Trade Laboratory (GIA Report: 14502487) as followed: Cushion Brilliant, 6.03 x 5.63 x 3.71 mm, 1.02 carat, 65.9% Depth, 63% Table, Thin to Very Thick Faceted, no culet, Excellent Polish, Very Good Symmetry, VS1 Clarity, E Color, No Fluorescence and set in 4 prongs. One diamond, solely graded by G.I.A. Gem Trade Laboratory (GIA Report: 14197645) as followed: Cushion Brilliant, 5.99 x 5.57 x 3.80 mm, 1.01 carat, 68.2% Depth, 62% Table, Thin to Very Thick Faceted Girdle, no culet, Very Good Polish, Good Symmetry, VS2 Clarity, F color, no Fluorescence and set in 4 prongs.
Store's Model #F5974/S8387 \$300,000.00



Side View

Top View #1

Top View #2



Front View

Fine Needle Cloud Identifier

Natural Feather showing no heat treatment

Date: December 19, 2006

One pair of 14 karat yellow gold and diamond pierced post earrings set in 4 prong heads. Two diamonds, round brilliant full-cuts, 0.80 carat total weight, I-J color, I1 clarity and 4.75 mm each.

Store's Model #JL-6235

\$2,760.00



Date: December 14, 2005

One Lady's 14 Karat white and yellow gold diamond ring. Six diamonds, round brilliant full-cuts, 0.50 carats total weight, G-I color, VS2-SI1 clarity and channel set.

Store's Model JL-3636

\$1,915.00



Date: December 2, 2004

One Lady's platinum, 14 karat rose gold and diamond ring designed by Martin Flyer. Twenty-four accent diamonds, round brilliant full-cuts, 0.50 carats total weight, F color, VS1-VS2 clarity and bead set in platinum. Twenty accent diamonds, round brilliant full-cuts, 0.20 carats total weight, Pink color, VS1-VS2 clarity and bead set in rose gold. The center is One diamond One diamond, solely graded and certified by G.I.A. Gem Trade Laboratory as followed: Identification: One diamond, Square Modified Brilliant, Measurements: 6.48 x 6.33 4.76 MM, Weight: 1.58 Carats, Depth: 75.2%, Table: 76%, Girdle: Thin to Medium, Culet: None, Polish: Very Good, Symmetry: Good, Clarity: VS2, Color: J, Fluorescence: none G.I.A. Diamond Grading Report Number: 13646316 Store's Model JK-9078

\$22,400.00



Date: February 15, 2007

One stainless steel Omega Seamaster Co-Axial Chronometer wrist watch with matching link style bracelet band. Swiss movement, slate round dial, date, 3 sub dials, hour markers with orange numbers 6, 9, 12 and orange 60 minute bezel.

Omega Model #22185000

Omega Serial #78307414

Store's Model #JM-0910

\$5,580.00



Date: November 18, 2002

One Lady's Platinum and 18 Karat white gold, sapphire and diamond ring Stamped "RG8002 PT900". One sapphire, 9.02 carats, Cushion Mixed Cut, 12.23 x 11.61 x 7.23 MM, VVS clarity, set in 4 prongs and G.I.A. Gem Trade Laboratory Report Identification Report #10853430. Twenty-eight diamonds, round brilliant full-cuts, 2.04 carats total weight, D-E color, VS1-VS2 clarity, 14 burnished set and 14 set in prongs. The ring weighs 8.93 grams in weight.

Memo Sku Number

\$180,000.00



Date: January 10, 2003

One pair of Platinum, sapphire and diamond pierced post earring with Omega backs. Two sapphires, oval cuts, 3.72 carats total weight, 8.14 x 6.25 MM, 8.12 x 6.07 MM, purplish Blue color, 7 to 8 tones, 4 to 5 saturation, VVS clarity and set in 4 prong settings. Twenty-four diamonds, 10 round brilliant full-cuts, 14 marquise brilliant cuts, 3.32 carats total weight, E-F color, VS1 clarity and set in prongs. The earrings weigh 12.22 grams in weight.

Store's Model #EG197/609609

\$48,255.00



front view



back view



close up earring 1



close up earring 2

Date: November 18, 2002

One Lady's Platinum and 18 Karat white gold, sapphire and diamond ring Stamped "RG8002 PT900". One sapphire, 9.02 carats, Cushion Mixed Cut, 12.23 x 11.61 x 7.23 MM, VVS clarity, set in 4 prongs and G.I.A. Gem Trade Laboratory Report Identification Report #10853430. Twenty-eight diamonds, round brilliant full-cuts, 2.04 carats total weight, D-E color, VS1-VS2 clarity, 14 burnished set and 14 set in prongs. The ring weighs 8.93 grams in weight.

Memo Sku Number

\$180,000.00



Date: November 18, 2002

One Lady's Platinum and 18 Karat yellow gold, Opal and diamond "Victorian" style pin. Fifty-five diamonds, round brilliant Old-Mine cuts, 3.00 carats total weight approximately, E-G color, VS2-I1 clarity and burnished set in Platinum. One opal, Black type, translucent, 9.00 carats, pear cabochon, broad flashes of purples, blues, green and bezel set in yellow gold. The pin weighs 10.93 grams in weight.

Memo Sku Number

\$36,000.00



Date: November 24, 2006

One pair of 14 karat yellow gold and peridot pierced post earrings with tension disc backs (weighs 2.5 grams). Two peridots, round cuts, 8.5 mm approximately, 2.61 carats (actual), 3.01 carats (actual), yellow Green color, 5-6 tones, 5 saturation (vivid), VS-SI clarity and set in 4 prongs each.

Store's Model #RA10324

\$2,040.00



Date: November 13, 2006

One Ladies 14 karat yellow gold, peridot and diamond hinged hand made bangle 54.41 grams in weight. Two peridots, oval cuts, 7.233 carats (14.05 x 10.98 x 6.90 mm), 6.357 carats (13.85 x 10.75 x 6.37 mm), yellow Green color, 6 tone, 4 saturation, VS clarity and partial bezel set. Eighteen diamonds, round brilliant full-cuts, 0.79 carats total weight, E-G color, VS1-VS2 clarity and set in 2 channels.

Store's Model #RA7749Custom

\$14,000.00



One Lady's 18 karat white/yellow gold, diamond and sapphire slide on a triple 16 inch link chain designed by Bergio. Twenty-seven diamonds, round brilliant full-cuts, 0.95 carats total weight, F-H color, VS1-SI1 clarity and prong set. Thirty-nine sapphires, 11 natural Yellow colors with 0.50 carats total weight set in yellow gold prongs, 28 beryllium treated orange & red colors with 1.20 carats total weight and set in white gold prongs and VVS-VS clarity.

Store's Model #JL-0854

\$4,925.00



Date: September 20, 2005

One Ladies 18 karat yellow gold, platinum and 24 karat yellow gold custom hand made ring designed by Michael Bondanza. The ring is 13.9 mm in width at the top and domed.

Store's Model #JL-3819

\$4,550.00



Date: March 1, 2005

One custom made platinum, alexandrite and diamond pierced post earrings with Omega backs. Two alexandrites, channel and 3 prong set each, solely graded and certified by AGTA Gemological Testing Center Identification Report #96011306 as followed: 2 gems examined, Purplish blue (daylight), Transparent, 1.91 carats and 1.62 carats, 7.37 x 7.33 x 4.79 MM and 7.33 x 7.28 x 4.17 MM, round shape, mixed brilliant crown cut, no enhancement, natural chrysoberyl species, natural alexandrite variety and comment (The color of these stones change from purplish blue in daylight to purple in incandescent light.) Four diamonds, set in channels, solely graded and certified by G.I.A. Gem Trade Laboratory as followed: (1) Identification: One diamond, Square Modified Brilliant, Measurements: 4.66x4.44x3.02 MM, Weight: 0.54 carats, Depth: 68.0%, Table: 80%, Girdle: THN to STK, Culet: None, Polish: Good, Symmetry: Good, Clarity: VS2, Characteristics: Feather, Crystal, Indented Natural, Color: E, Fluorescence: None, G.I.A. Diamond Dossier Report Number Inscription on Girdle Reads: GIA 12189502, Store's Model #9608, (2) Identification: One diamond, Rectangular Modified Brilliant, Measurements: 4.57 X 4.42 X 3.14 MM, Weight: 0.52 carats, Depth: 71.0%, Table: 71%, Girdle: Medium to Slight Thick, Culet: None, Polish: Very Good, Symmetry: Good, Clarity: VS1, Color: D, Fluorescence: Faint, G.I.A. Diamond Dossier Report Number & Inscription on Girdle Reads: GIA 11423021, Store's Model #S05-11648, (3) Identification: One diamond, Rectangular Modified Brilliant, Measurements: 5.32 x 5.06 x 4.01MM, Weight: 0.91 Carats, Depth: 79.2%, Table: 73%, Girdle: Medium to Thick, Culet: None, Polish: Excellent, Symmetry: Good, Clarity: VS2, Color: F, Fluorescence: None G.I.A. Diamond Grading Report Number: 12792876, Store's Model #3305-B, and (4) Identification: One diamond, Square Modified Brilliant, Measurements: 5.33 x 5.11 x 4.05 MM, Weight: 0.92 Carats, Depth: 79.3%, Table: 78%, Girdle: Medium to Thick, Culet: None, Polish: Very Good, Symmetry: Good, Clarity: VS1, Color: F, Fluorescence: None, G.I.A. Diamond Grading Report Number: 12818396, Store's Model #3384

Store's Model #Custom Made

\$101,165.00



Date: January 21, 2005

One custom made platinum, 24 karat yellow gold and diamond slide weighing 14.42 grams in weight. Thirty-two accent diamonds, round brilliant full-cuts, 1.36 carats total weight, E-F color, VS1-VS2 clarity, 24 are bead set and 8 are bezel set. One diamond, set in 4 prongs, solely graded and certified by G.I.A. Gem Trade Laboratory as followed:

Identification: One diamond, Cushion Modified Brilliant, Measurements: 19.21 x 10.82 x 6.27 MM, Weight: 10.11 Carats, Depth: 57.9%, Table: 58%, Girdle: Medium to Very Thick Faceted, Culet: Small, Polish: Excellent, Symmetry: Very Good, Clarity: VVS2, Color: F, Fluorescence: None

G.I.A. Diamond Grading Report Number: 12751229

Store's Model #RB102-01B/custom

\$423,085.00



Date: November 14, 2003

One Lady's platinum, opal & diamond ring set in prongs. One opal, 12.75 carats, oval cabochon, 19.54 x 14.20 x 7.33mm, Black body color, broad flashes of Greens, Blues, Purples, Oranges, Yellows, & Reds. Eighteen diamonds, 16 round brilliant full-cuts, 2 triangle cuts, 2.22 carats total weight, D-F color & VS1-SI1 clarity.

Store's Model #S.O. 4338

\$50,000.00



Date: October 22, 2003

One Lady's 18 Karat yellow gold, sapphire and diamond tennis bracelet in 7.5 inch length and 16.75 grams in weight. Twenty-two sapphires, oval cuts, 13.91 carats total weight, 11 Blue colors (6-7 tone, 3 saturation), 11 yellow Orange color (5-6 tone, 3-4 saturation), VVS clarity and set in 4 prong heads. Forty-two accent diamonds, round brilliant full-cuts, 0.84 carats total weight, F-H color, VS2-SI2 clarity and set in 4 prong heads

Store's Model #S.O.

\$6,090.00



Date: August 10, 2002

One Ladies 18 Karat yellow gold and diamond wrist watch with 18 Karat yellow gold link style bracelet band from Baume & Mercier. Swiss quartz movement, sapphire crystal, safety clasp, round cream color dial with 12 round brilliant single cut diamonds as hour markers set in yellow gold bezels with E-F color and VVS clarity and 0.03 carats total approximately. Thirty-six diamonds, round brilliant full-cuts, 0.82 carats total weight approximately, E-F color, VVS clarity and burnish set on the bezel. The watch weighs 49 grams in weight.

Baume & Mercier Reference #MOA06293

Baume & Mercier Model #MV035046

Baume & Mercier Serial #2440505

Store's Model #JH-1670

\$11,900.00



Date: June 24, 2006

One Lady's 14 karat white gold, diamond and sapphire ring. Thirty-four diamonds, 28 round brilliant full-cuts, 6 straight baguette cuts, 0.73 carats total weight, F-H color, VS2-I2 clarity. 28 bead set, 6 straight baguette cuts are set in a channel. Five sapphires, square cuts, 2.8 mm, Blue color, 7-8 tones, 4 saturation, VS-SI clarity and set in a channel.

Store's Model JK-9020

\$2,705.00



Date: November 17, 2006

One Ladies 18 karat white gold and diamond pendant designed by Gregg Ruth (weighs 2.192 grams). Sixty-two accent diamonds, round brilliant full-cuts, 0.43 carats total weight, F color, VS1 clarity and burnished set (16 in the bail). One diamond, Old European round brilliant full-cuts, 0.484 carats (actual), H color, I1 clarity (indented natural on the crown, chip, feather), medium culet and set in 4 prongs.

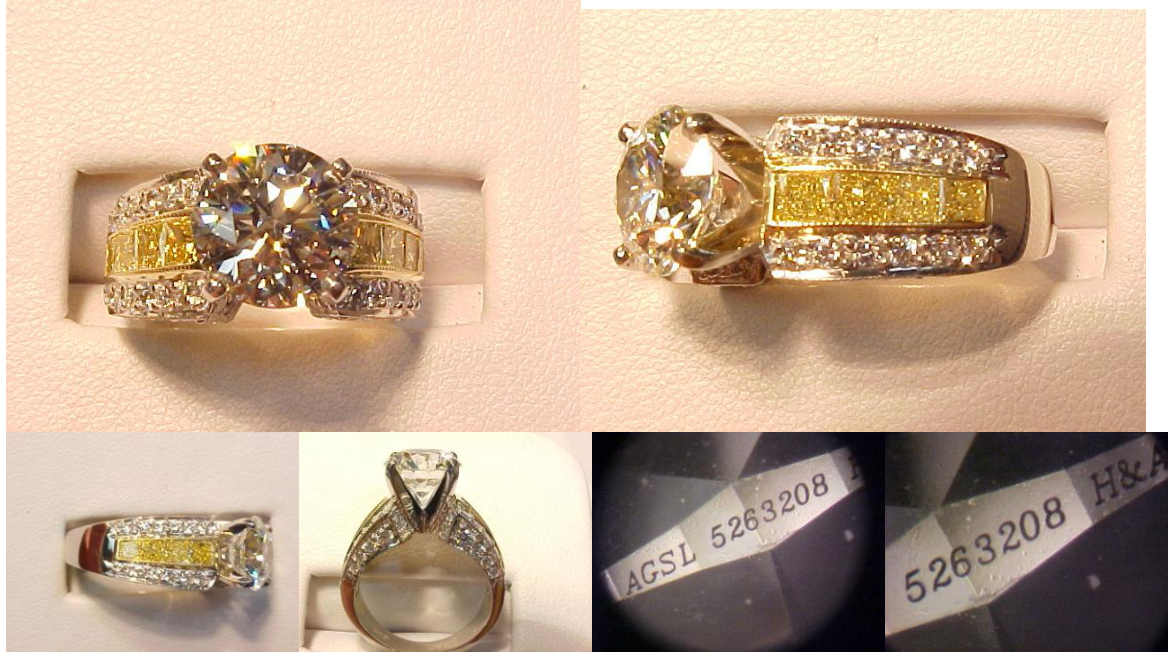
Store's Model #RA9581/customer's diamond

\$3,450.00



Date: May 27, 2005

One Lady's platinum and 18 karat yellow gold diamond ring designed by J.B. Star. Fifty-six accent diamonds, 48 round brilliant full-cuts (0.76 carats total weight, F color, VS1 clarity, burnished set in platinum) and 8 princess cuts (1.03 carats total weight, Fancy Yellow color and set in 2 yellow gold channels). One diamond, solely graded and certified by AGS Laboratory as followed: Round Brilliant, 8.86 – 8.91 x 5.47 mm, Cut Grade: AGS Ideal 0, Polish: Ideal, Symmetry: Ideal, Proportions: Ideal, Color Grade: AGS 3.0 (J), Clarity Grade: AGS 4 (VS2), Carat Weight: 2.630 cts, Fluorescence: Negligible, "AGSL 5263208 H&A" has been inscribed on the girdle of this diamond, 57% table, 14.9% crown, 43.3% pavilion, 0.9 to 1.5% girdle, 34.4 degrees crown, 41.0 degrees pavilion and 61.4% total pavilion depth. Store's Model #S.O./customer's diamond \$34,400.00



Date: November 10, 2004

One Lady's 14 karat yellow gold and diamond bridal ring set soldered together. One Lady's 14 karat yellow gold and diamond ring. Five diamonds, round brilliant cuts, approximately 1.40 - 1.90 mm, 0.07 carats total weight, G-H color, SI1 clarity and set in prong heads. One Lady's 14 karat yellow gold and diamond engagement ring with a four prong white gold head. One diamond, round brilliant cut, 4.86 - 4.91 x 3.04 MM, 0.47 carats, H color, SI1 clarity and a medium girdle.

Store's Model #Updated Appraisal

\$2,885.00

