



Computer Center



Introduction

- ❑ Computer Center established in March 1976
- ❑ Provide Internet services, and licensed software downloaded via wired & wireless networks.
- ❑ Provide PC classrooms to support computer-related lectures
- ❑ Support consulting of computer technology for all faculties and students
- ❑ Develop and maintain campus administration software systems



Location of Computer Center

□ 5F(Classroom) and 6F(Office) of Research Building

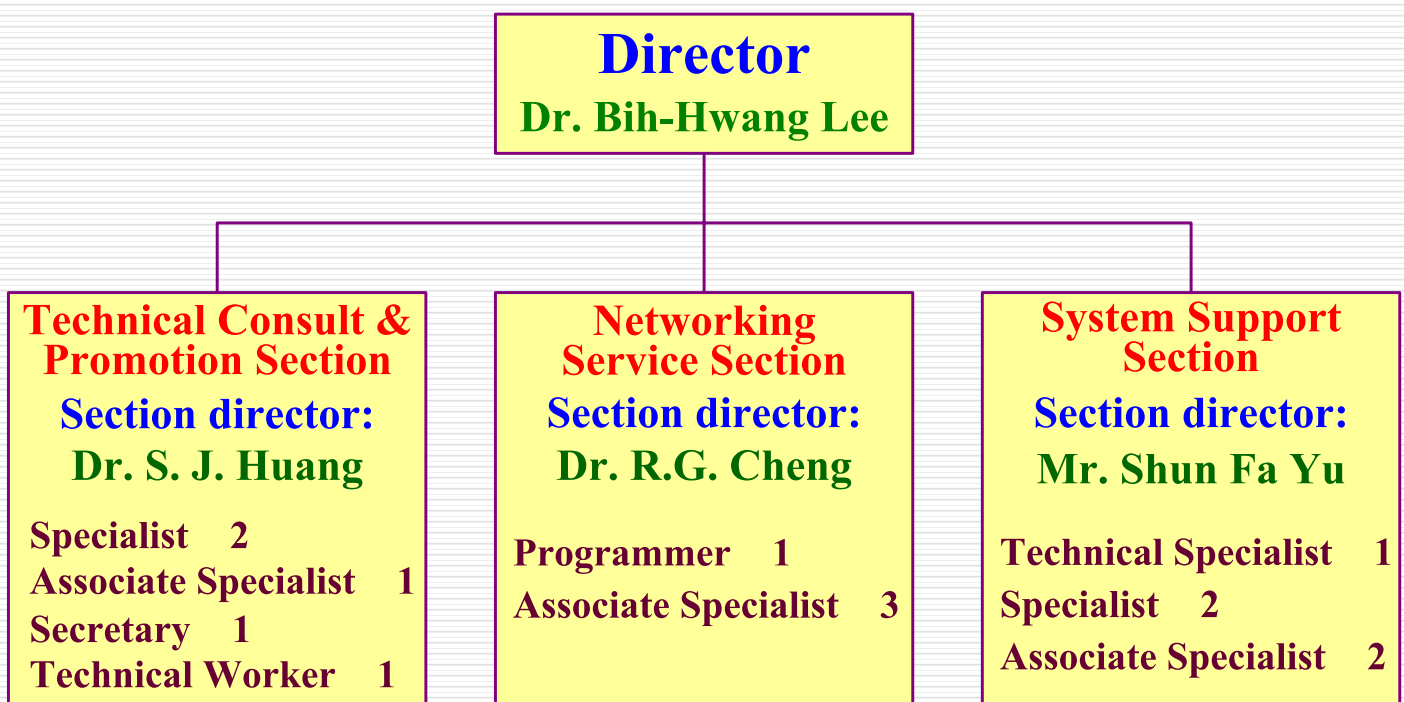


Computer Center, National Taiwan University of Science and Technology, 2006/9/20

3



Organization Chart



Computer Center, National Taiwan University of Science and Technology, 2006/9/20

4



Services by Each Section

- Technical Consult & Promotion Section**
 - Provide consulting of computer technology for all faculties and students
 - Support computer and software-related lecturer.
- Networking Service Section**
 - Provide Internet services, and licensed software downloaded via wired & wireless networks legal software for all staffs and students
- System Support Section**
 - Develop and maintain campus administration software systems



Technical Consult & Promotion Section

- Computer Classroom Management**
 - 235 PCs in 4 computer classrooms.
- Licensed Software Download**
 - Provide legal software for all staffs and students
- Offer Computer-Related Training Courses**
 - Provide computer courses for all faculties and students
- E-Learning Environment**
 - Provide Internet courseware for all users
- Personal Home Page**
 - Provide disk space for the use of personal web pages



Service Hours of Computer Classroom

- Use student's identity card to enter classroom
- Access Internet via personal E-mail account and password
- Academic Days
 - Monday to Friday: 08:30 to 20:30
 - Saturday and Sunday: 10:00 to 18:00
- Winter and Summer Breaks
 - Monday to Friday: 08:30 to 16:30
 - Saturday and Sunday: 10:00 to 16:30
- Times may vary during national or consecutive holidays.



Services in Computer Classroom

- Support computer and software-related lecturer
- Provide students with internet access
- Provide students with scanning and printing facilities
- Provide students with after-class practices



Personal Home Page

- Provide disk space in Web server for constructing personal web pages
 - Web Server: <http://web.ntust.edu.tw>
 - Upload personal web pages via FTP software
 - Refer to web site of computer center <http://www.ntust.edu.tw/~cc> for more detailed information

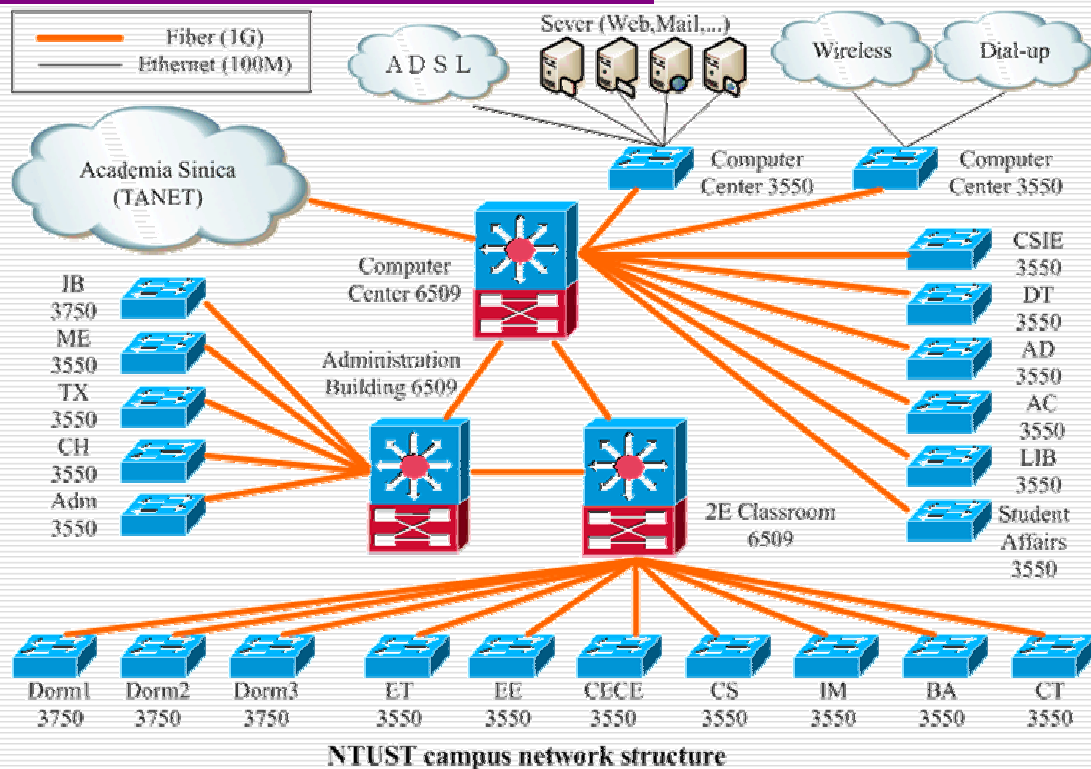


Network System Operation Section

- E-mail Services
- Networks: network backbone, dial-in network, dormitory network, wireless network
- Clustering computer (304 CPUs)
- Web-page management



Campus Network Structure



Computer Center, National Taiwan University of Science and Technology, 2006/9/20

11



Wired Networks

- Fiber-based backbone network
- 1Gbps high-speed link to Academia Sinica
- For campus network service,
Get your IP and register your MAC address
from the network manager at your department
- For dormitory network, please refer to
<http://dorm.ntust.edu.tw/> and consult your
dormitory network manager for help.

Computer Center, National Taiwan University of Science and Technology, 2006/9/20

12



Wireless Networks

- Ubiquitous WLAN (802.11b) service in campus
- Use your **email account and password** to login
- Detail setting
 - <http://www.ntust.edu.tw/~cc/wireless/xp.htm>
- Roaming services are available in some universities. You can use your email address (i.e., xxx@mail.ntust.edu.tw) to login their WLANs



Network Flow Management

- Wired network
 - Up to 3GB/IP/Day (per IP per day)
 - Suspend your IP for one day if your flow exceeds the upper bound
- Wireless network
 - Up to 1GB/Account/Day
 - Suspend your account for one day if your flow exceeds the upper bound
- CC will block the network access service for the virus-affected machine



E-mail Services

- E-mail: ***YourID@mail.ntust.edu.tw***
- Outlook/Express
 - POP3、SMTP: **mail.ntust.edu.tw**
 - Make sure that
“My server requires authentication” is checked
- Web-mail service: **<http://mail.ntust.edu.tw/>**
- The size of your mailbox is 100MB
- Details
 - **<http://www.ntust.edu.tw/~cc/service/email.pdf>**



Copyright Infringement

- This unauthorized copying and distribution constitutes copyright infringement under applicable national laws and international treaties.
- You will get a **minor demerit** if you violate the other's intellectual property rights (Article 11, Item 2 of Student's Reward and Penalty Appraisal Regulation). Please get to **<http://student.ntust.edu.tw/stud/guidance/StuBook/engStuBook/show.asp?ID=20&type=2StudentAffairs>** for more information.
- Up to now, we have got more than 30 violation reports in this Year.



Student Information Systems

Student Information :

<http://stuinfo.ntust.edu.tw>

- Input & Modification of Student Information
- Course Selection
- Scoring Query
- Teaching Evaluation

Course Catalog : <http://stuinfo3.ntust.edu.tw>

- Course Query
- Related Limitation on Course Selections



Tuition and Scholarships Systems

Scholarship System:

<http://stuinfo2.ntust.edu.tw/schol/>

- Provide guidelines to file a scholarship
- Provide an on-line system to file the application

Tuition System :

<http://stuinfo3.ntust.edu.tw/chinatrust/>

- Tuition Query
- Tuition Printing



Network Usage Problems

Academic Network

- Please contact the one who is responsible for the network issues in each department first.

Dormitory Network

- Each dormitory has a “Dormitory Network Manager” who is in charge of network usage problems
- Support does not include hardware, software setup and setting
- Contact Info.: Check NTUST BBS “Dormitory Network Board” after every semester begins.

Consulting services

- Phone : Ext. 7027



Web Site of Computer Center

<http://www.ntust.edu.tw/~cc/eng/>

Important Notices :

1. Please obey academic network usage-related regulations
2. All of these information can be downloaded from the web site of computer center



*National Taiwan University
of Science and Technology*

Computer Center

**Thank you for
your Attention!**