

**AT** MICROFICHE  
REFERENCE  
LIBRARY

A project of Volunteers in Asia

3 Welding Jigs

ITDG Complete Technical Drawings #19

by: R. Mann

Published by:

Intermediate Technology Publications, Ltd.  
9 King Street  
London WC2E 8HN  
United Kingdom

Paper copies are 1.50 British pounds.

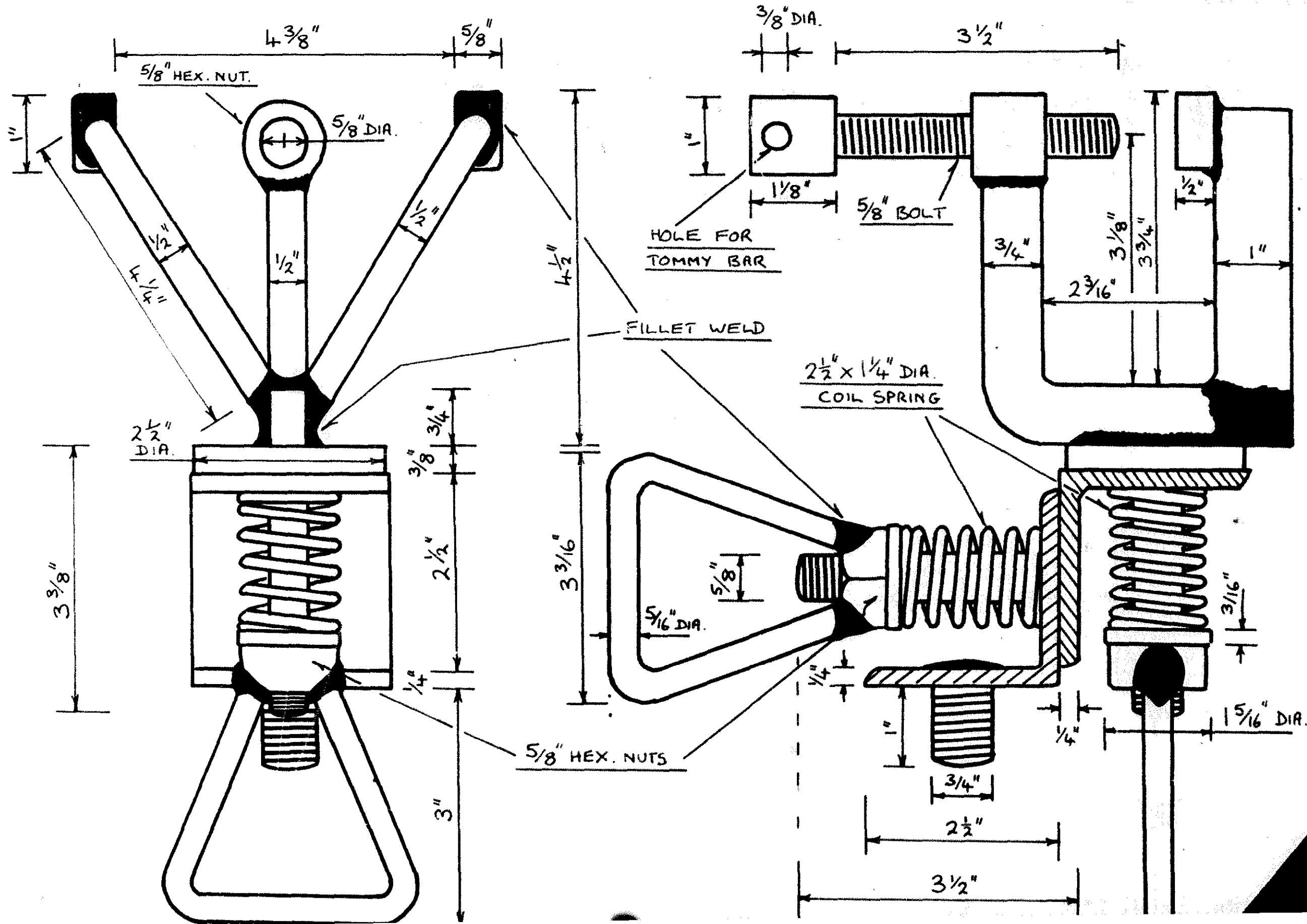
Available from:

Intermediate Technology Publications, Ltd.  
9 King Street  
London WC2E 8HN  
United Kingdom

Reproduced by permission of Intermediate  
Technology Publications, Ltd.

Reproduction of this microfiche document in any  
form is subject to the same restrictions as those  
of the original document.

FULL SIZE DRAWING FOR 'PLOUGH SHARE' WELDING JIG  
TO FACILITATE REPAIR/FABRICATION OF IRREGULAR SECTION.

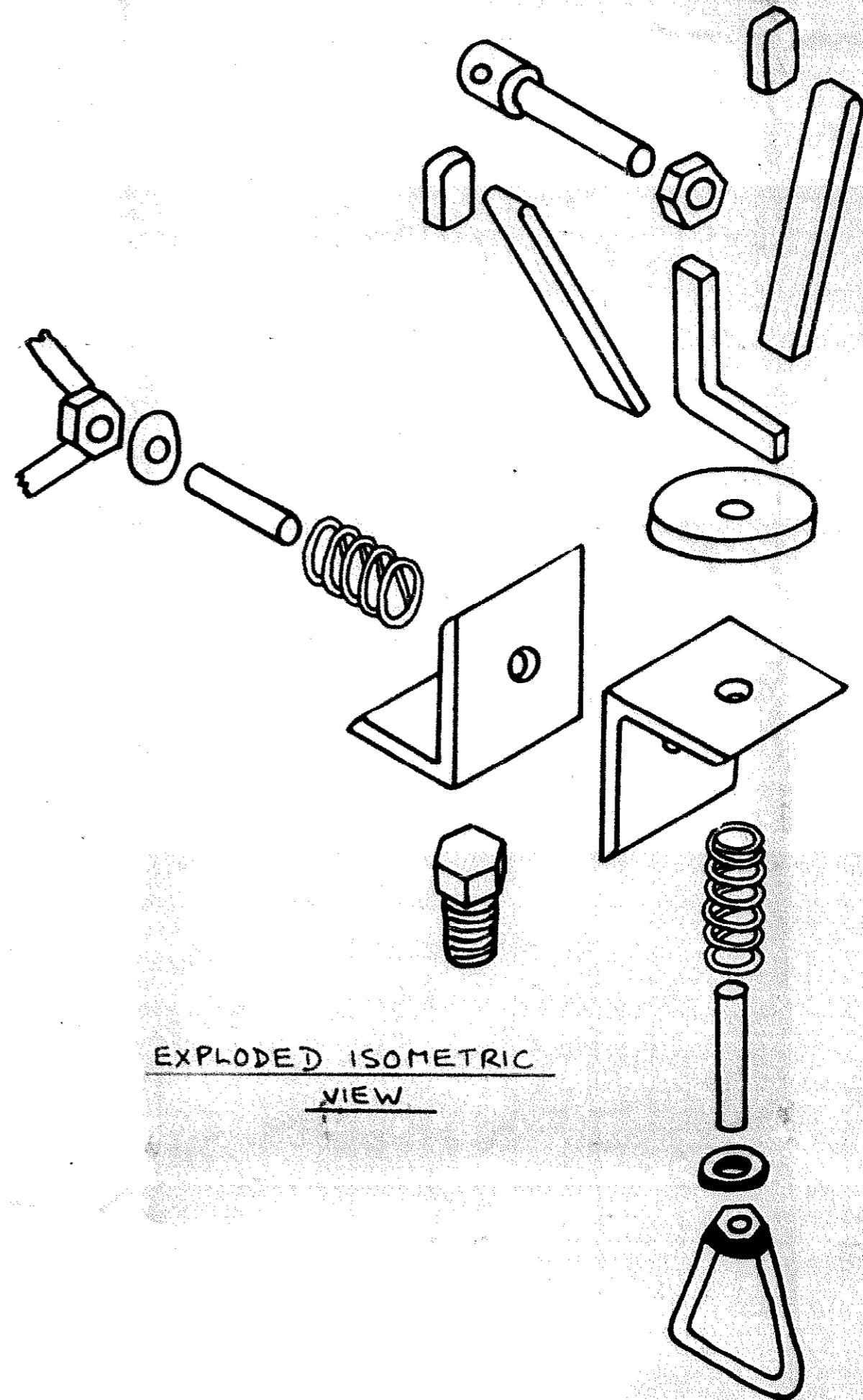


MATERIAL

PART	NO.	SIZE	METAL
SWIVEL	2	2½" x 2½" x ¼"	MIS ANGLE
ARMS	2	4¼" x 1" x ½"	MIS
ARM TIPS	2	1" x 5/8" x ½"	MIS
CLAMP LEG	1	8" x ¾" x ½"	MIS
TENSION HANDLES	2	10" x 5/16" ROUND	MIS
CIRCULAR PLATE	1	2½" x 3/8"	MIS
WASHERS	2	1 5/16" x 3/16"	MIS
CLAMP SCREW	1	4" x 5/8" BOLT	MIS
FIXING STUD	1	1" x ¾" STUD	MIS
TENSION PINS	2	4" x 5/8" BOLT	MIS
COIL SPRINGS	2	2½" x 1¼" x 3/16"	SPRING STEEL
NUTS	3	5/8"	MIS

NOTE: (1) ALL DIMENSIONS AND VIEWS APPROXIMATE.  
 (2) SUGGESTED DIMENSIONS WHICH CAN BE VARIED TO SUIT LOCAL AVAILABILITY OF MATERIAL AND PARTICULAR SIG REQUIREMENTS.

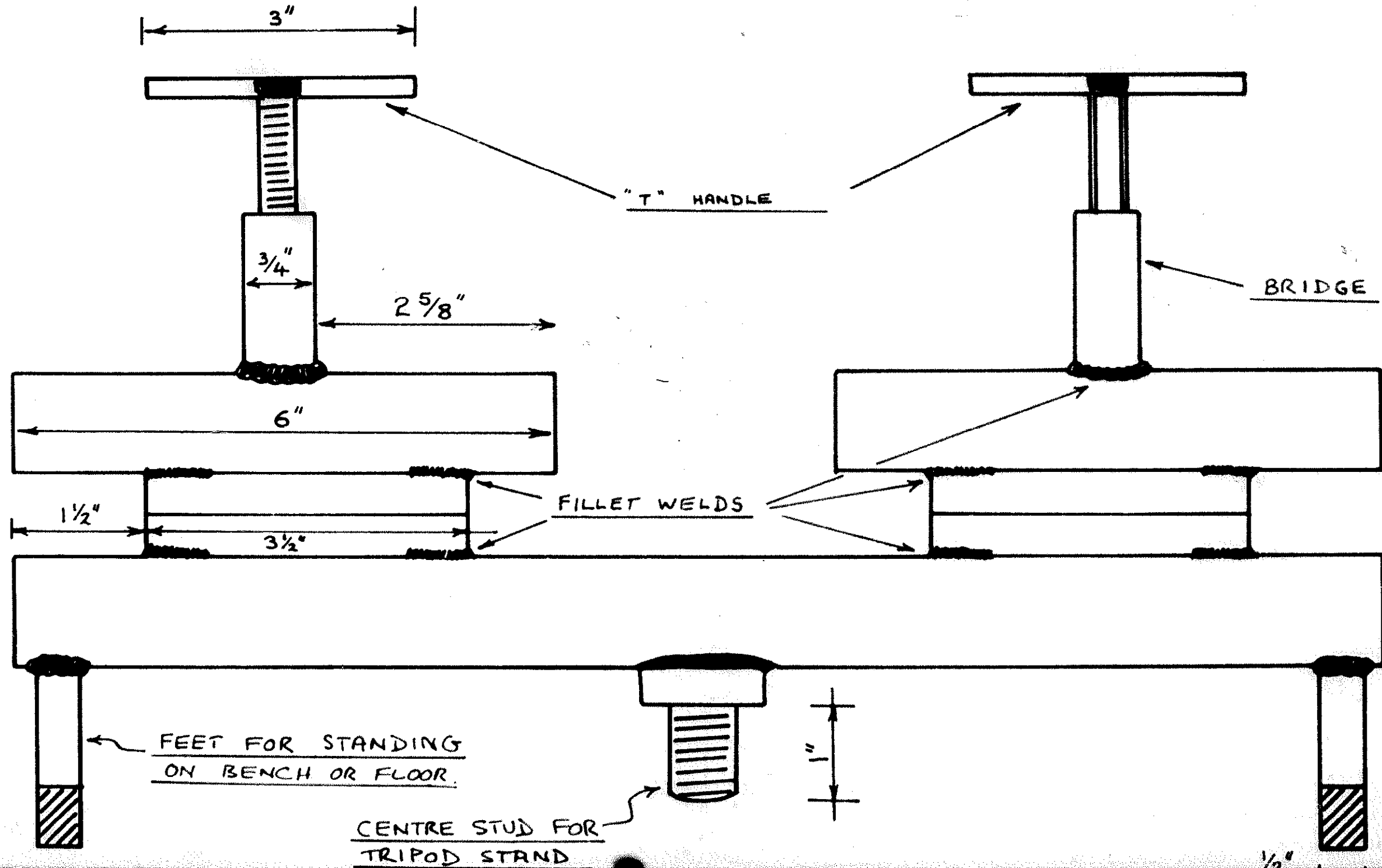
RURAL INDUSTRIES BUREAU DRAWING NO. E. 777.  
 RE-TRACED BY R.D. MANN - N.C.A.E. | SILSOE - 13.8.71

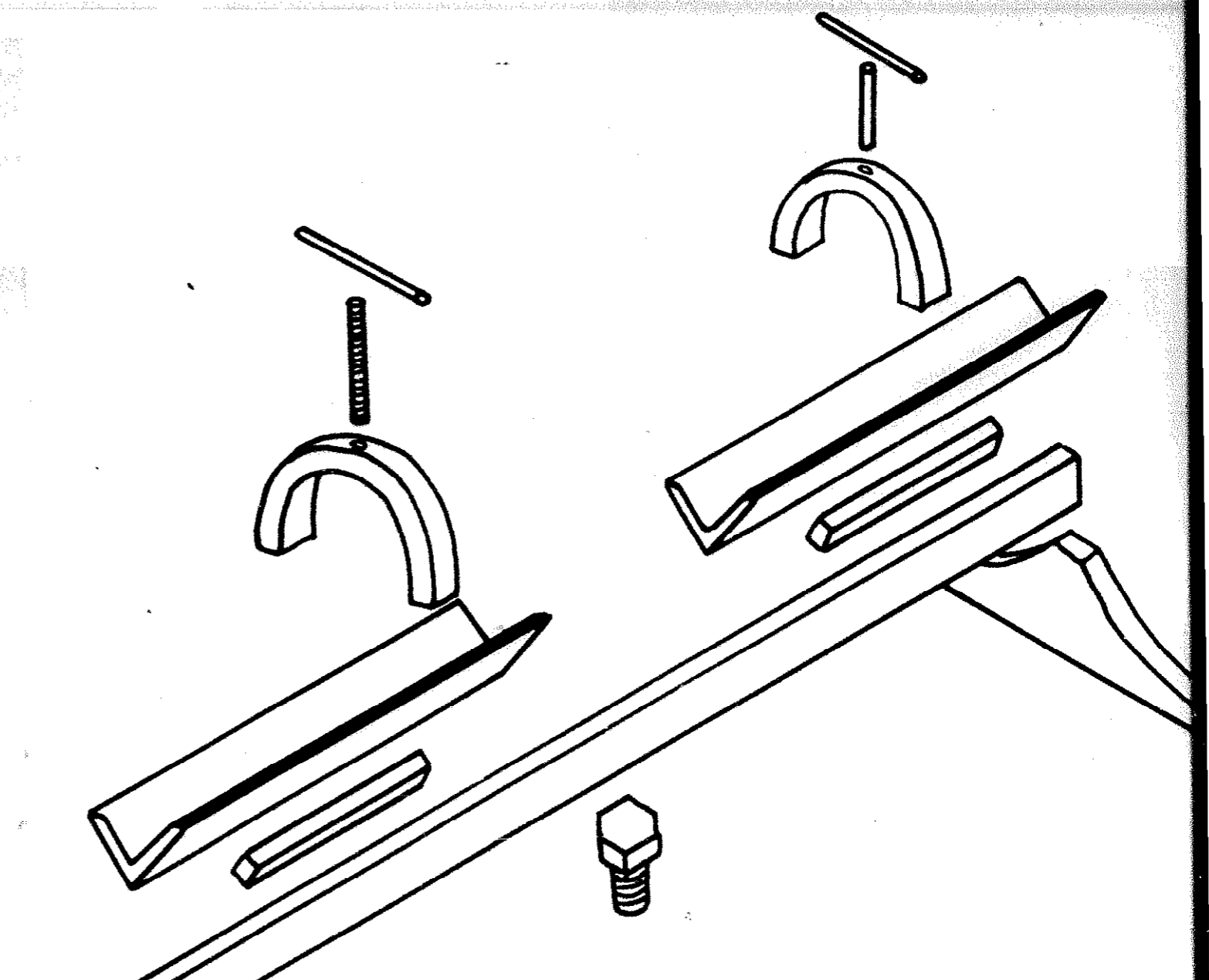
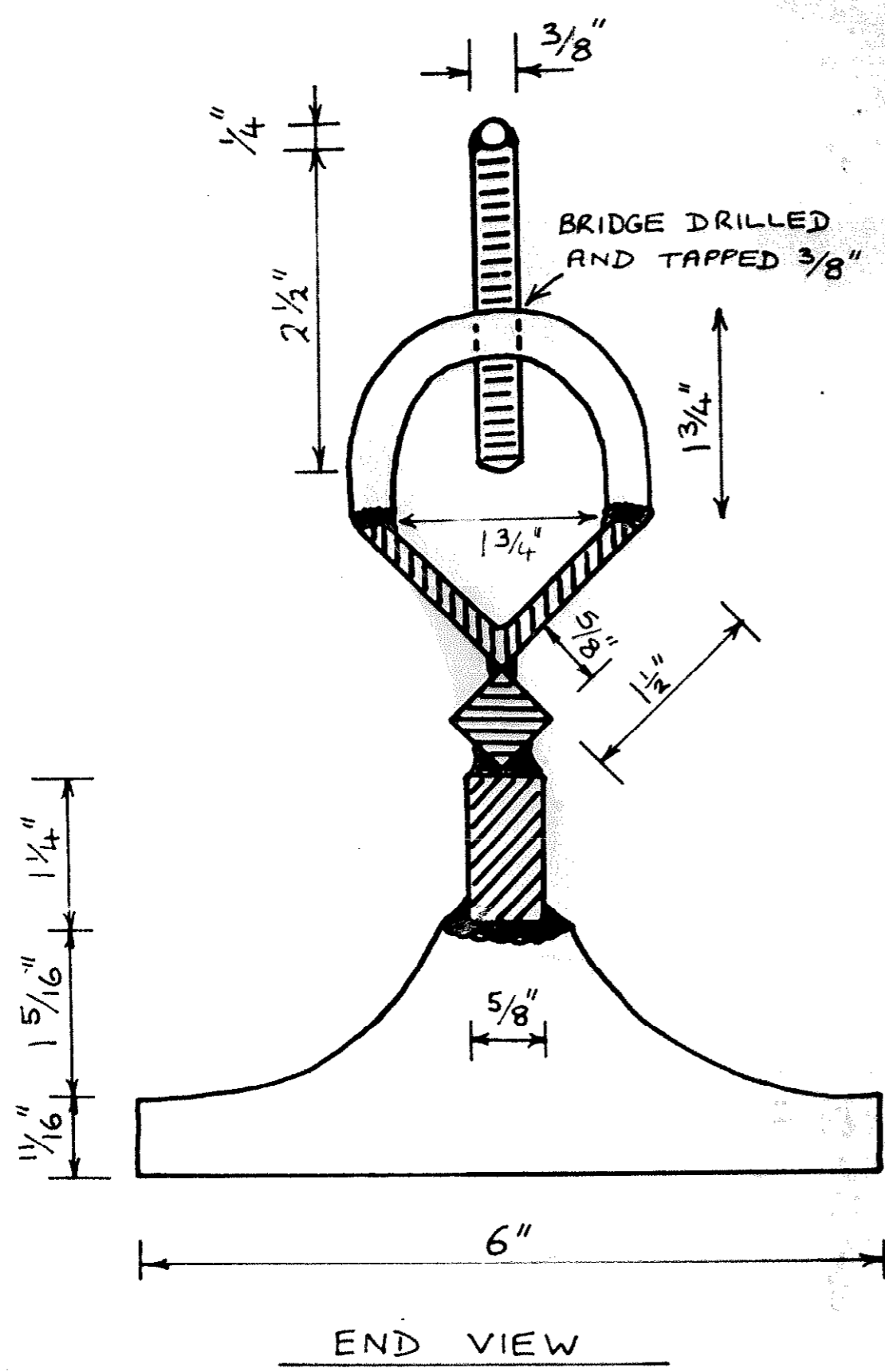


EXPLODED ISOMETRIC  
VIEW

FULL SIZE DRAWING FOR SHAFT AND STOCK WELDING JIG

SIDE VIEW





EXPLODED ISOMETRIC VIEW

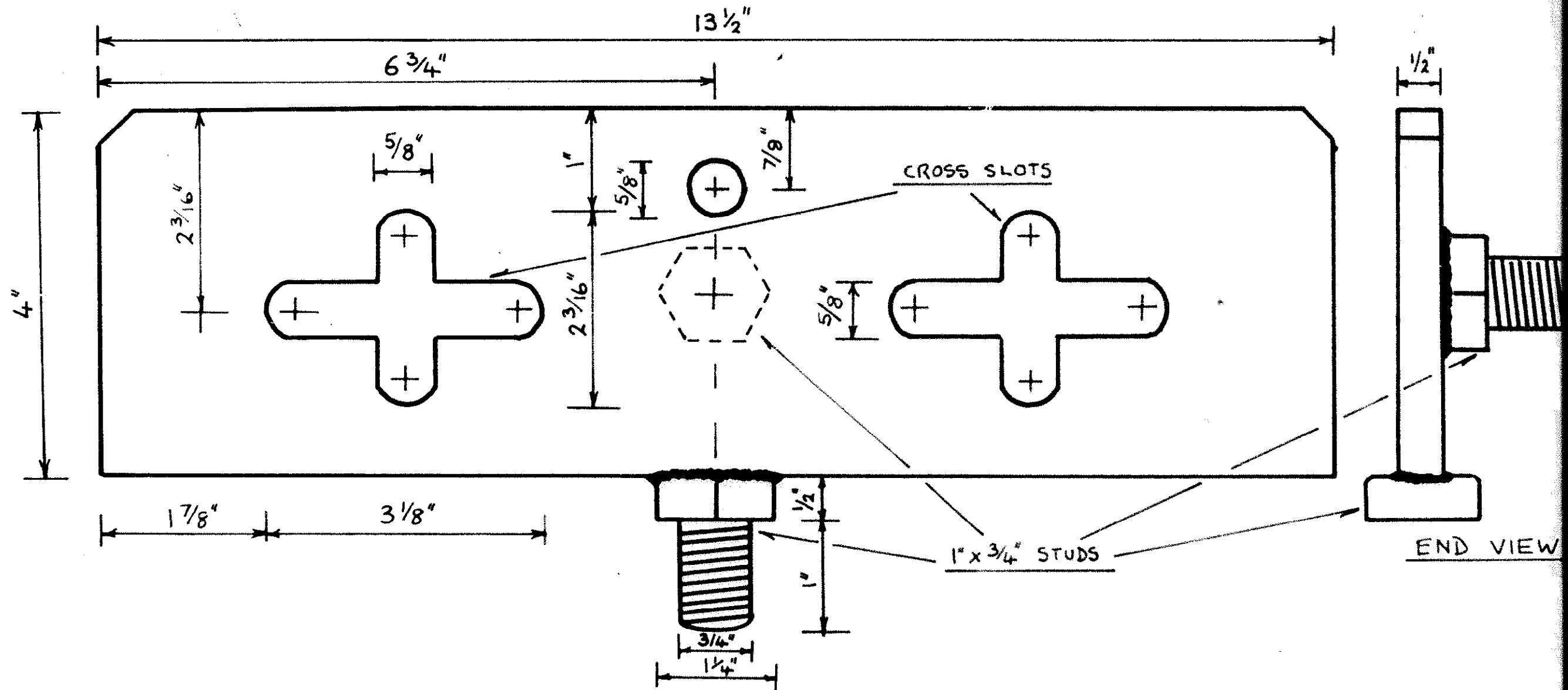
MATERIAL

PART	NO.	SIZE	METAL
BODY BAR	1	15" x 1 1/4" x 5/8"	MIS
DISTANCE PIECE	2	3 1/2" x 5/8" x 5/8"	MIS
VEE PIECE	2	6" x 1 1/2" x 1 1/2" x 1/4"	MIS ANGL
BRIDGE	2	7" x 3/4" x 3/8"	MIS
FEET	2	6" x 2" x 1/2"	MIS
CLAMP SCREW	2	2 1/2" x 3/8"	MIS BOLT
T HANDLE	2	3" x 1/4"	MIS BAR
CENTRE STUD	1	1" x 3/4"	MIS STUD

RURAL INDUSTRIES BUREAU - DRAWING NO. E. 780.

RE-TRACED BY R. MANN - N.C.A.E. / SILSOE - 10.8.71

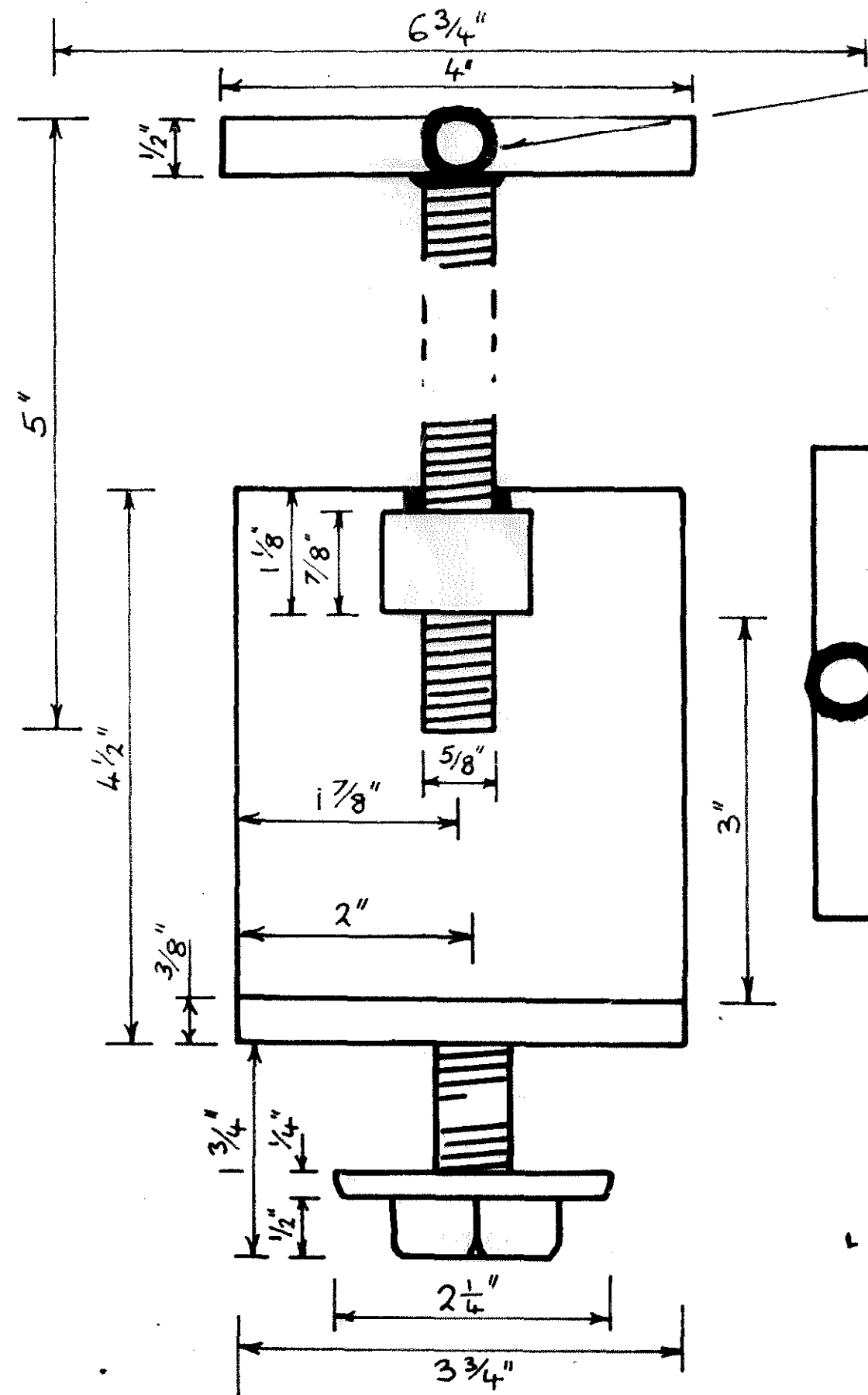
FULL SIZE DRAWING FOR UNIVERSAL WELDING JIG



NOTE: (1) ALL DIMENSIONS AND VIEWS APPROXIMATE.  
 (2) SUGGESTED DIMENSIONS WHICH CAN BE VARIED  
 TO SUIT LOCAL AVAILABILITY OF MATERIAL  
 AND PARTICULAR JIG REQUIREMENTS.

RURAL INDUSTRIES DRAWING NO. E. 778.  
 RE-DRAWN BY R.D. MANN - N.C.A.E. / SILSOE - 11.8.71

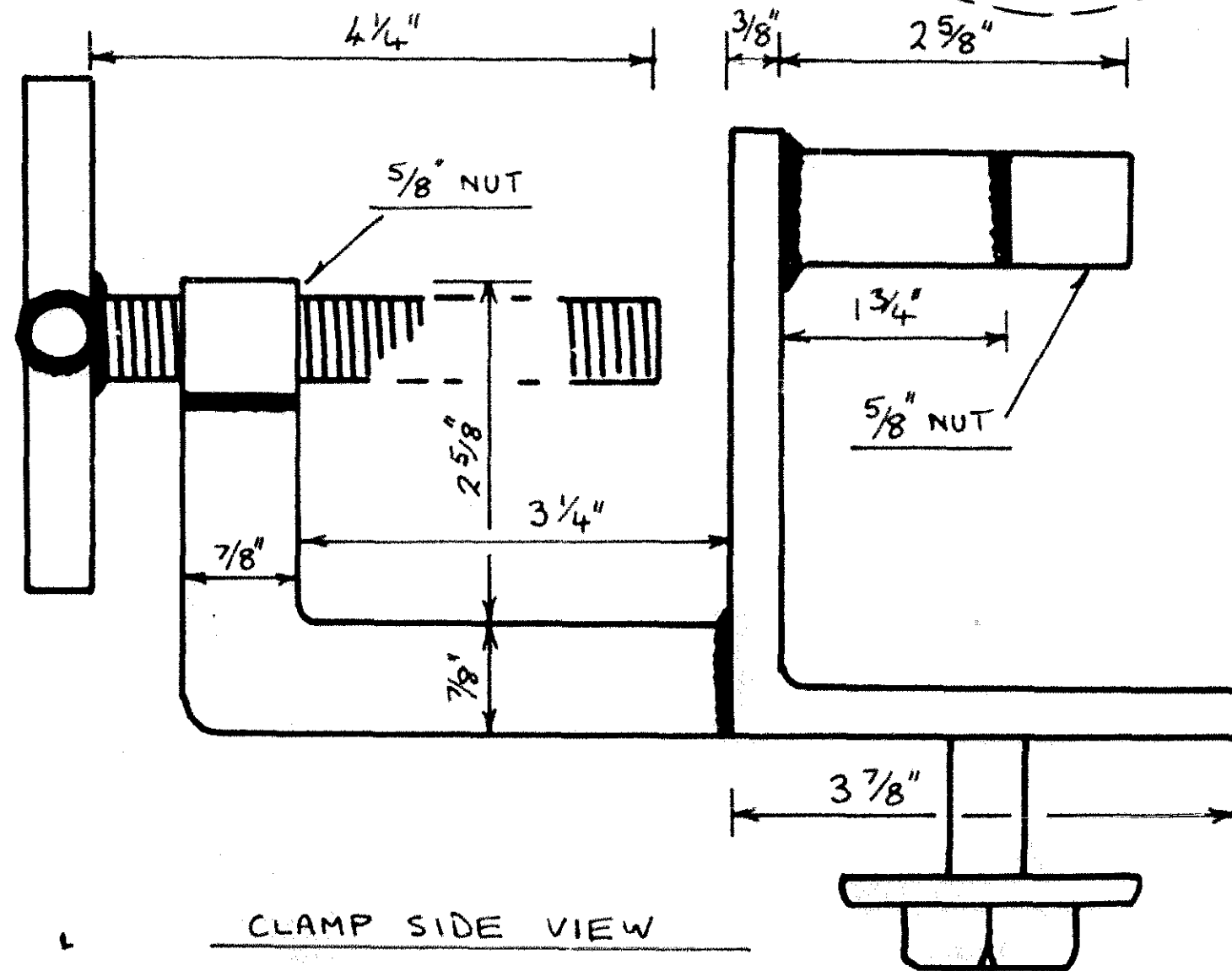
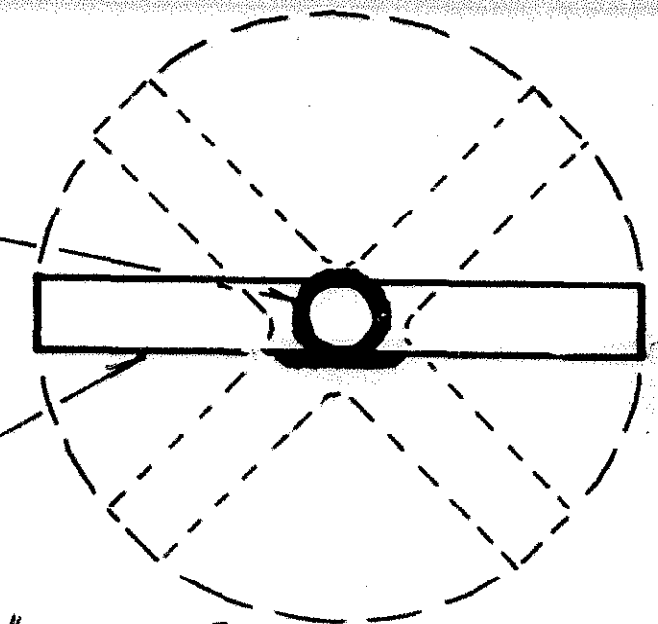
PLAN OF BASE PLATE



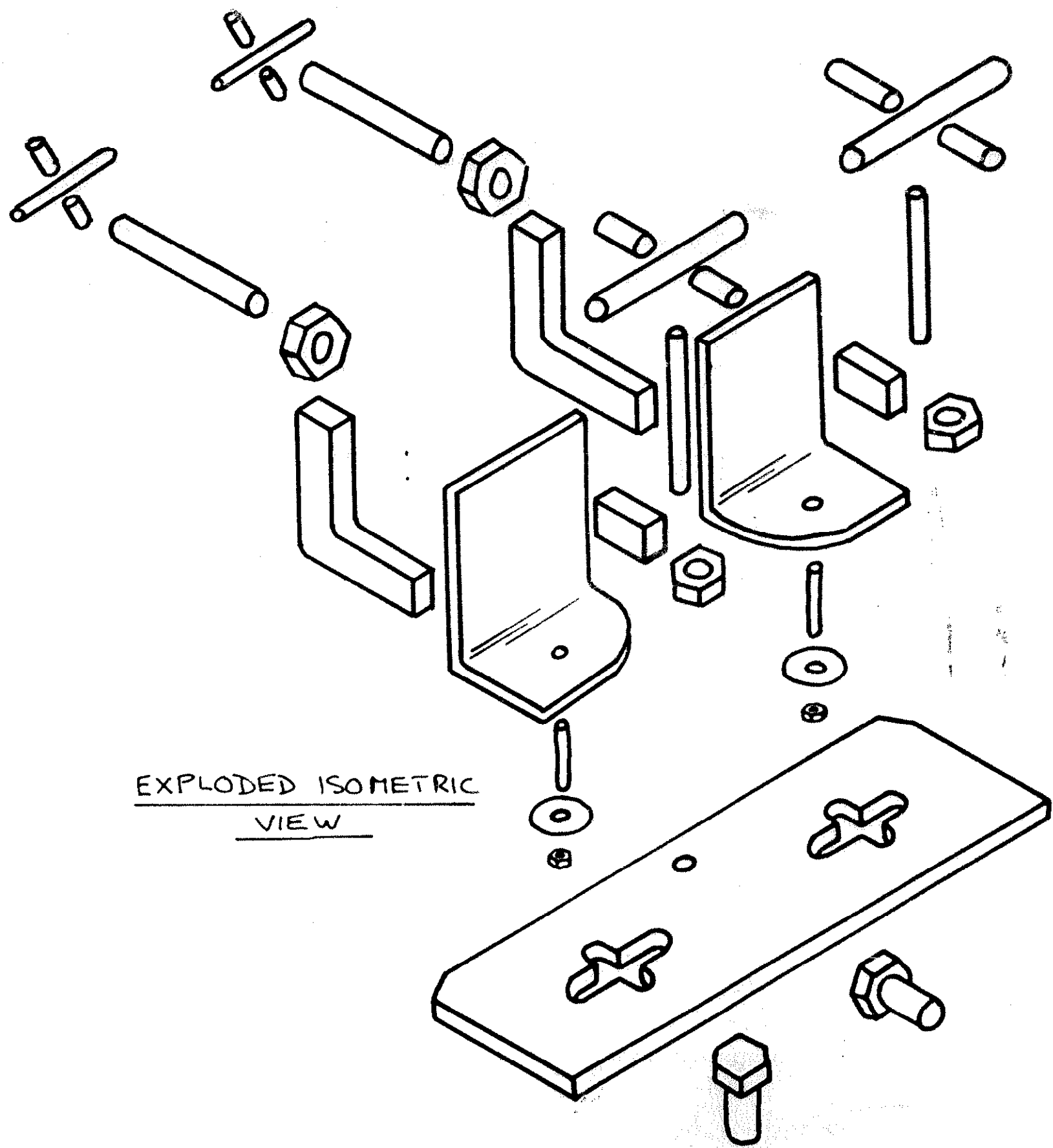
CLAMP FRONT VIEW

WELDED TO STUD

HANDWHEELS MADE FROM  
1/2" ROUND WELDED TO CLAMP SCREW



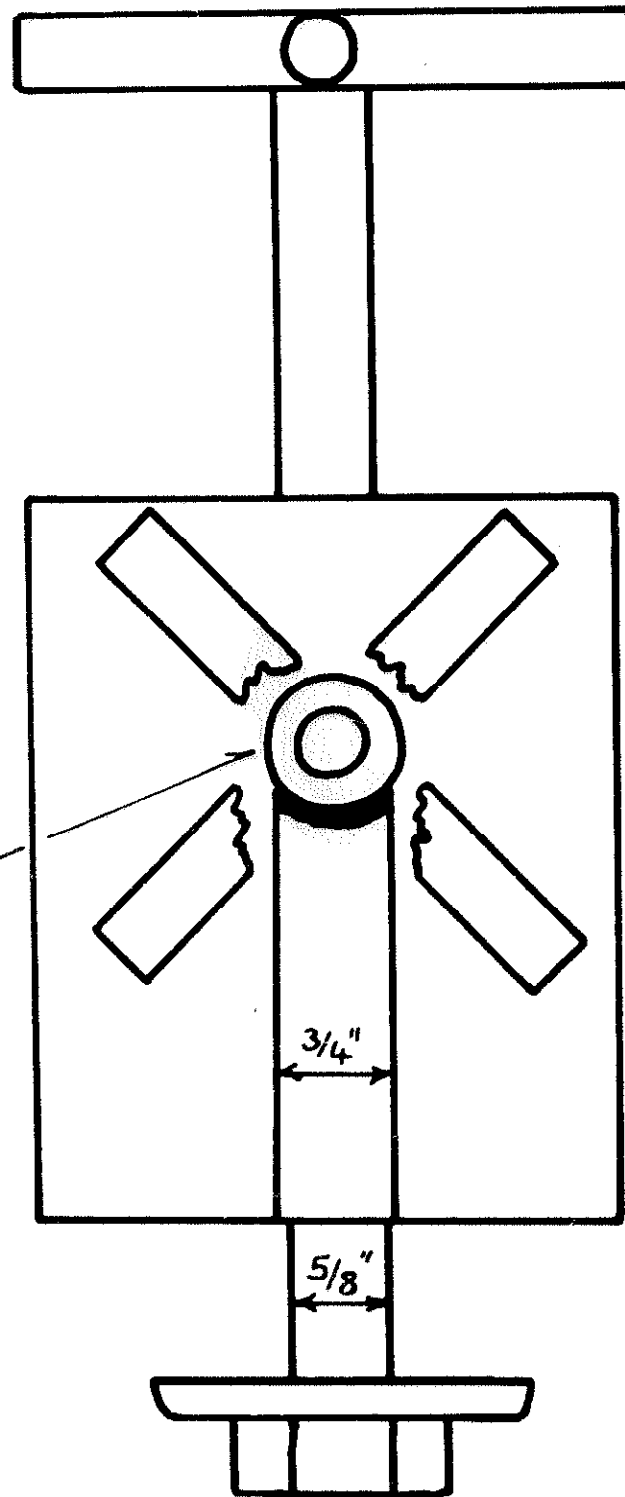
CLAMP SIDE VIEW



EXPLODED ISOMETRIC  
VIEW



HANDWHEEL CUT AWAY  
TO SHOW CLAMP HEAD



CLAMP REAR VIEW

MATERIAL

PART	NO.	SIZE	METAL
BASE PLATE	1	13 1/2" x 4" x 1/2"	M/S
CLAMP BODY	2	4 1/2" x 3 3/4" x 3/8"	M/S L
BENT LEG	2	8" x 7/8" x 3/4"	M/S
STRAIGHT LEG	2	1 3/4" x 7/8" x 3/4"	M/S
HAND WHEELS	4	8" x 1/2" ROUND	M/S
CLAMP SCREWS	4	5" x 5/8" DIA	M/S
CLAMP BODY ANCHOR STUD	2	2" x 5/8" DIA	M/S
HEX. HD NUTS	6	5/8" DIA	M/S
WASHERS FOR 5/8" STUDS	2	2 1/4" x 1/4"	M/S
BASE PLATE STUD	2	1" x 3/4"	M/S