

AT MICROFICHE
REFERENCE
LIBRARY

A project of Volunteers in Asia

Wind Resistant Block Houses: Basic Rules

Published by:

Intertect
1789 Columbia Road, N.W.
Washington, DC 20009 USA

Available from:

Intertect
1789 Columbia Road, N.W.
Washington, DC 20009 USA

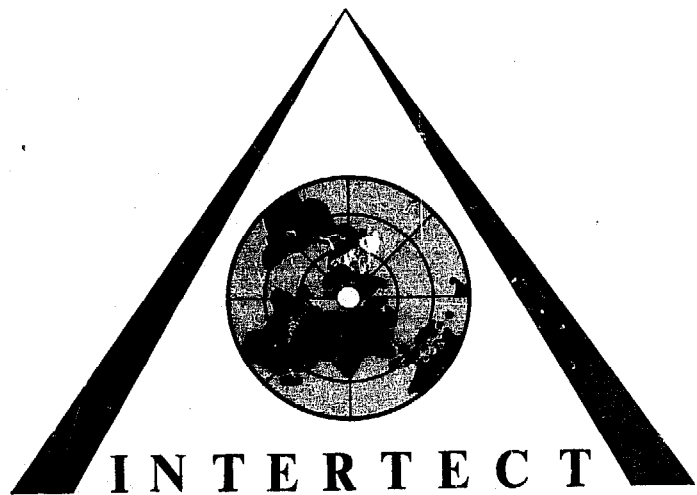
Reproduced by permission of Intertect.

Reproduction of this microfiche document in any form is subject to the same restrictions as those of the original document.

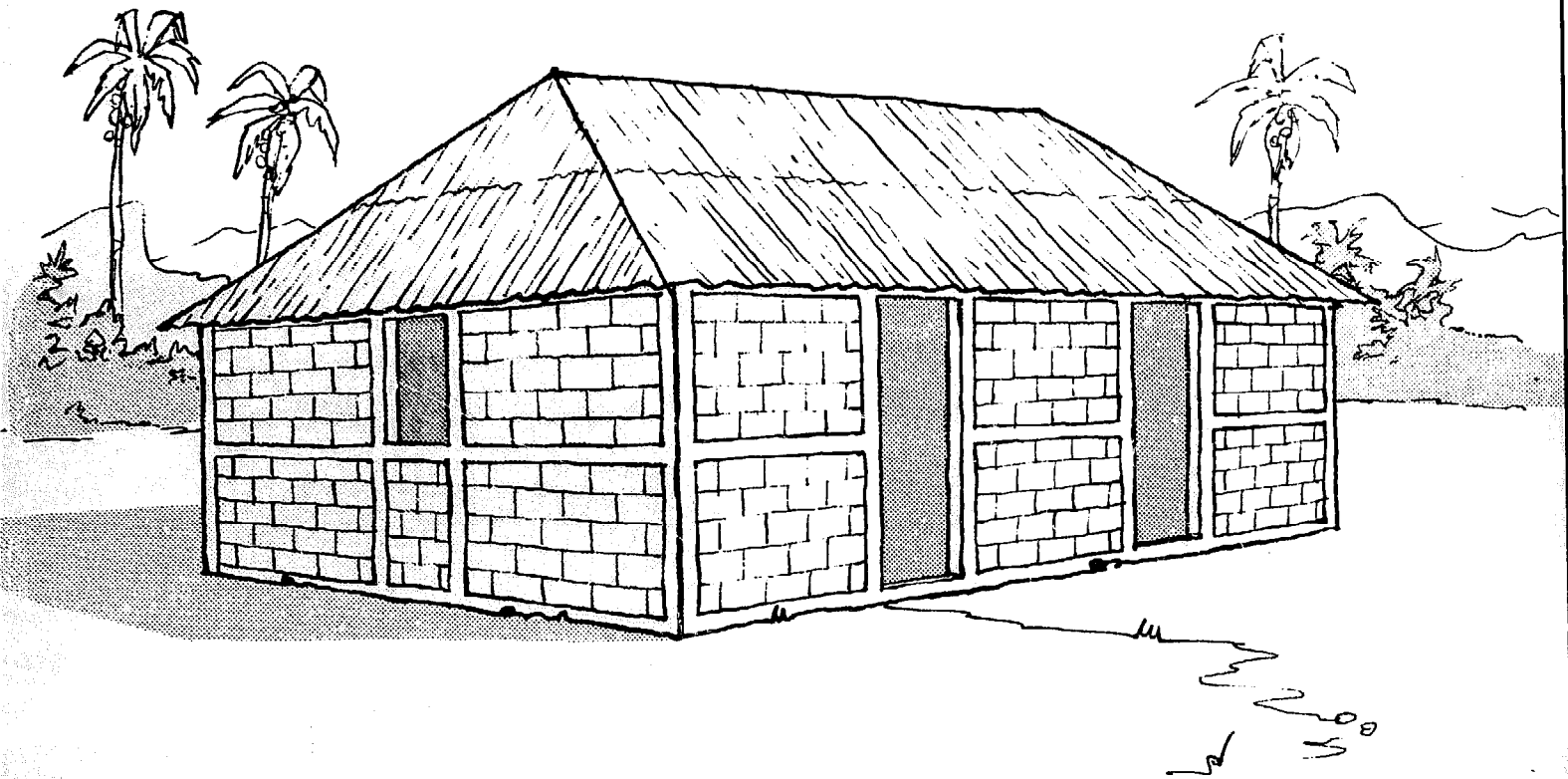
WIND RESISTANT BLOCK HOUSES:

BASIC RULES

(English)



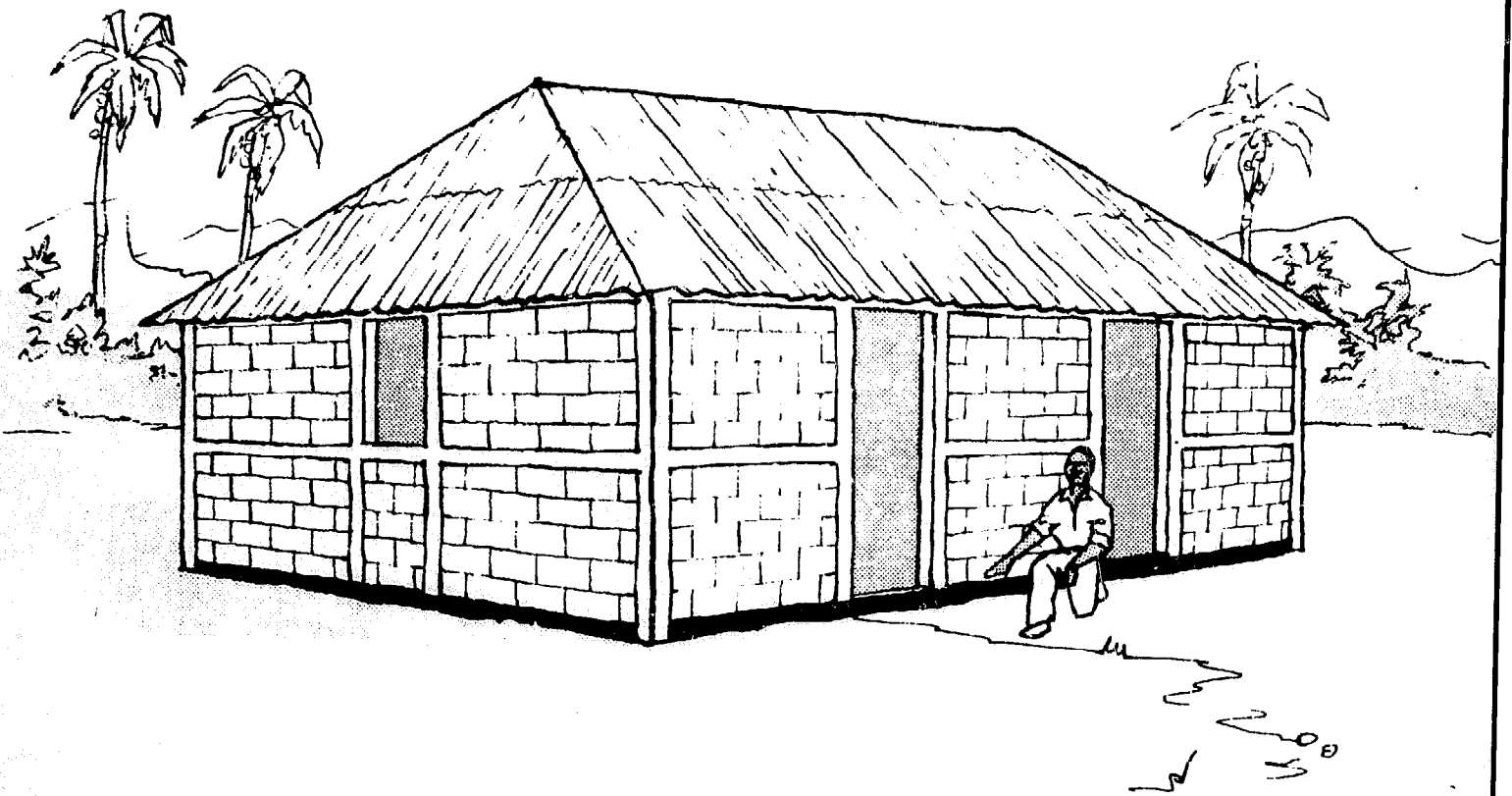
WIND RESISTANT BLOCK HOUSES: BASIC RULES



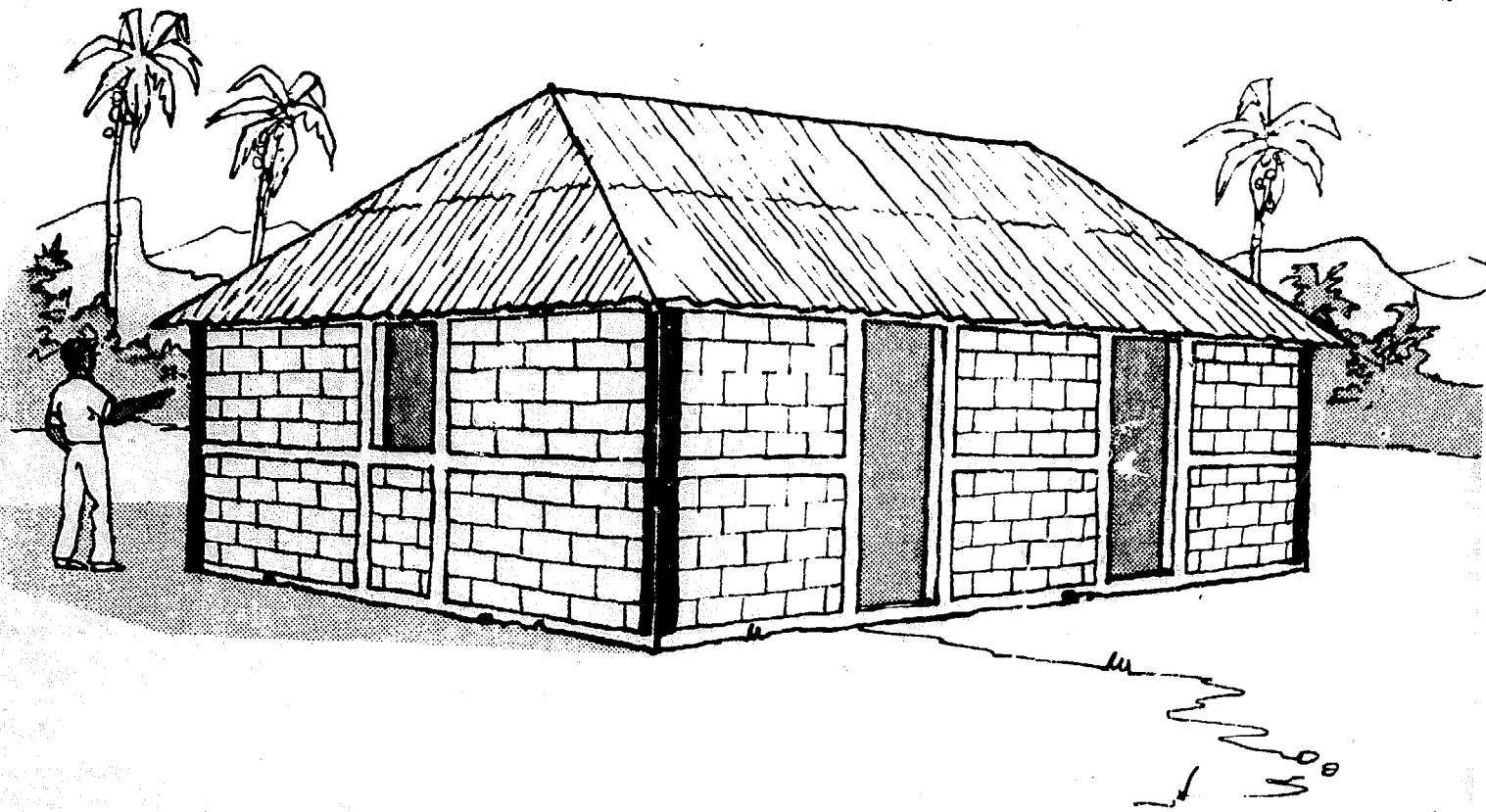
INTERTECT
P.O. Box 10502
Dallas, Texas 75207



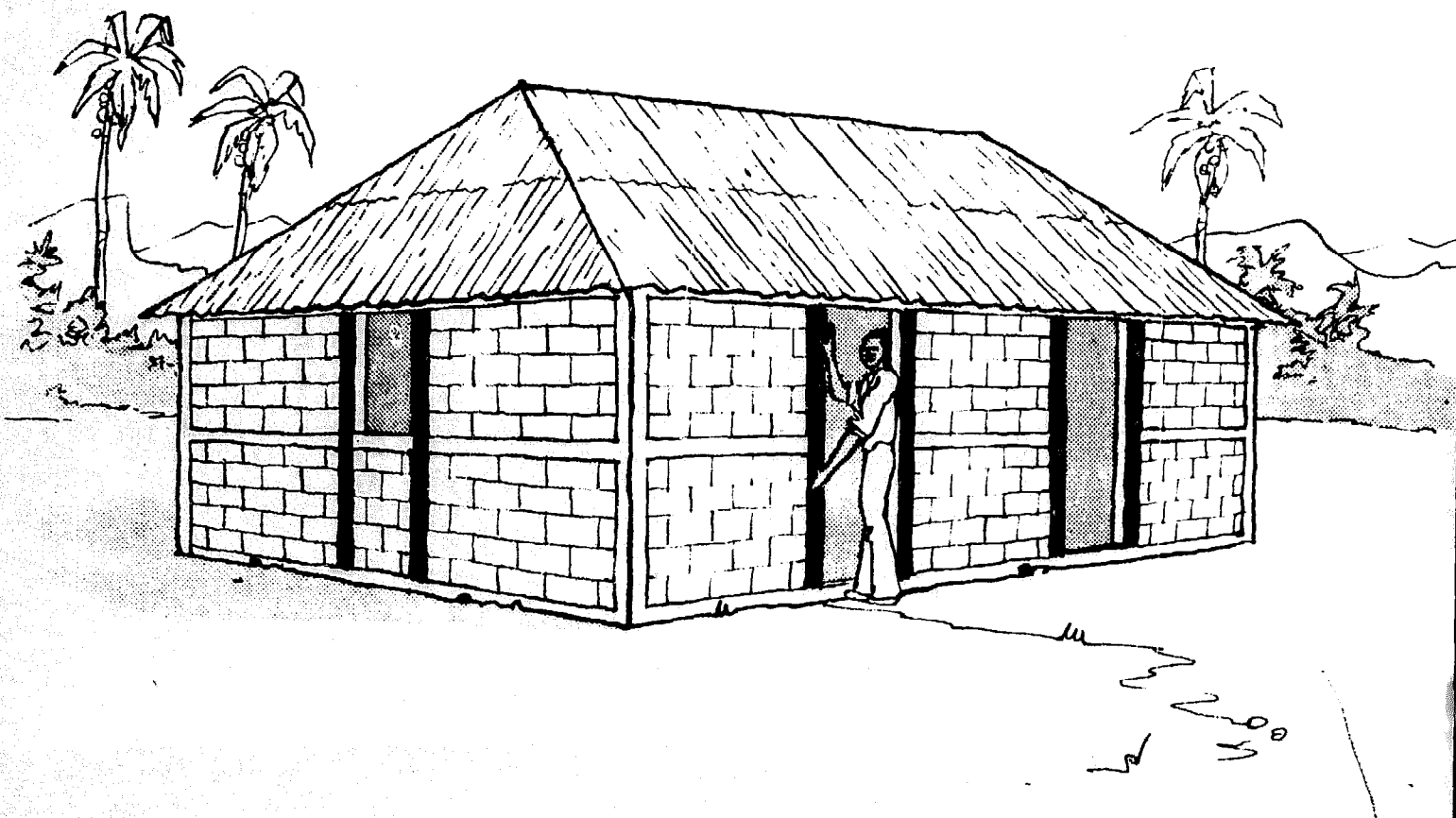
INTERTECT



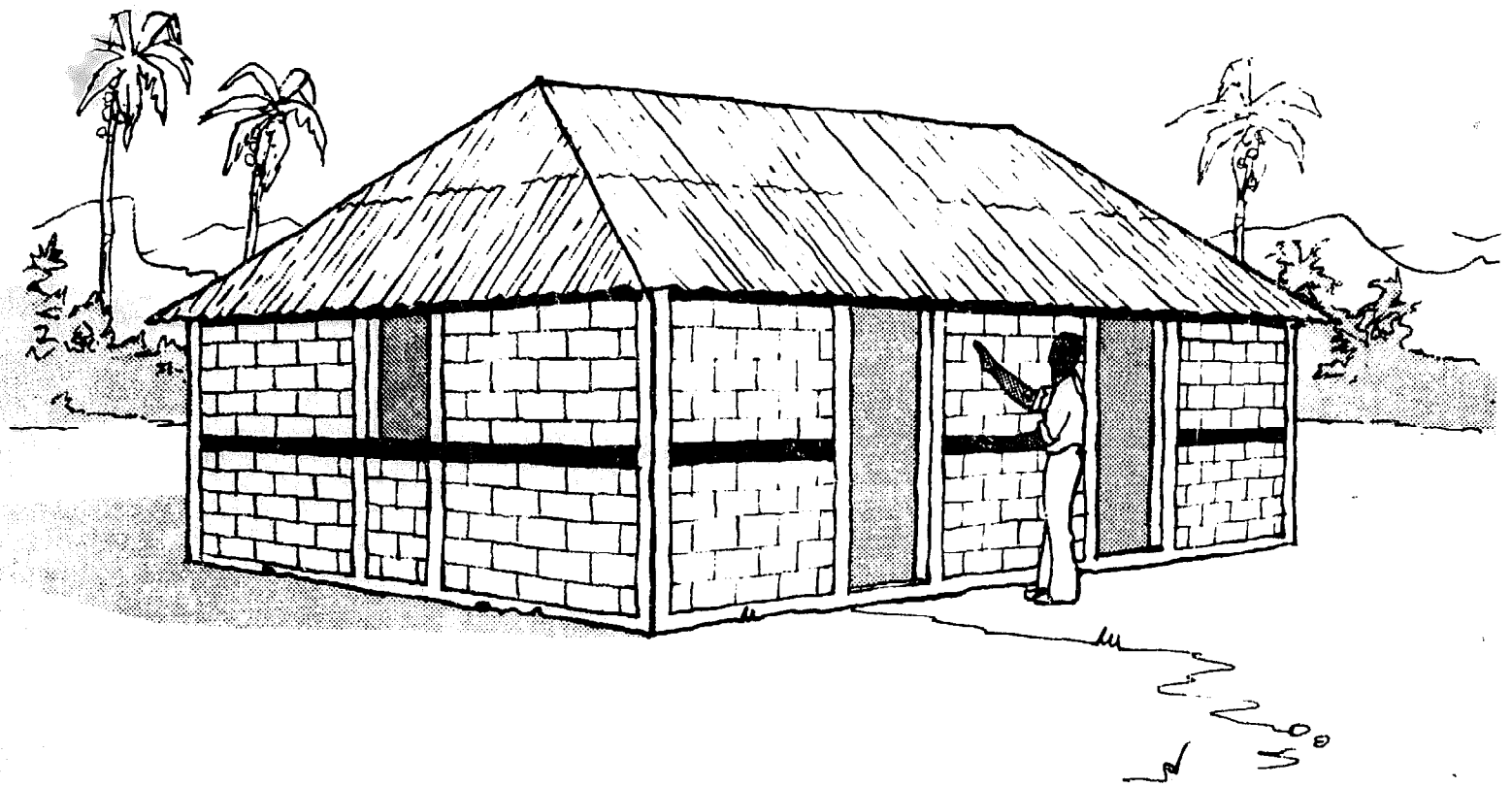
Build a strong foundation reinforced with iron rods, and build it a minimum of 12 inches above the ground to serve as a moisture barrier.



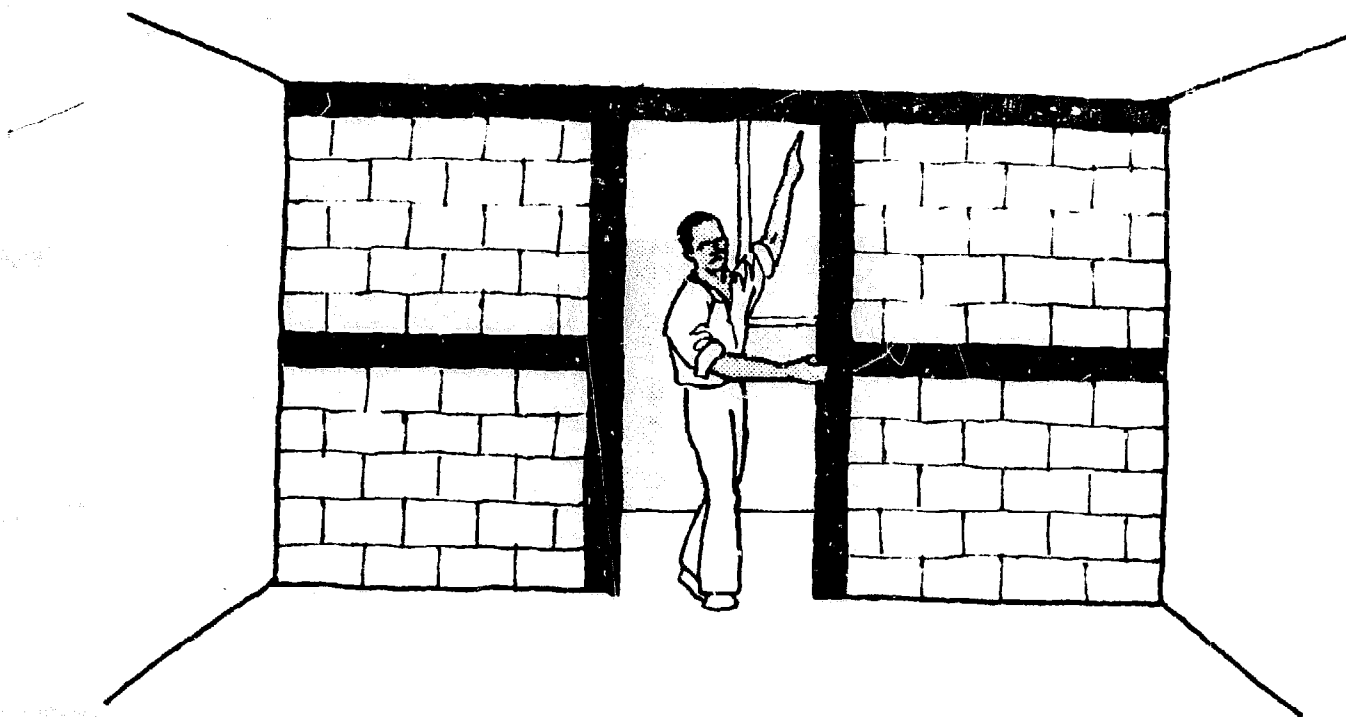
Place cement columns reinforced with iron rods in each corner.



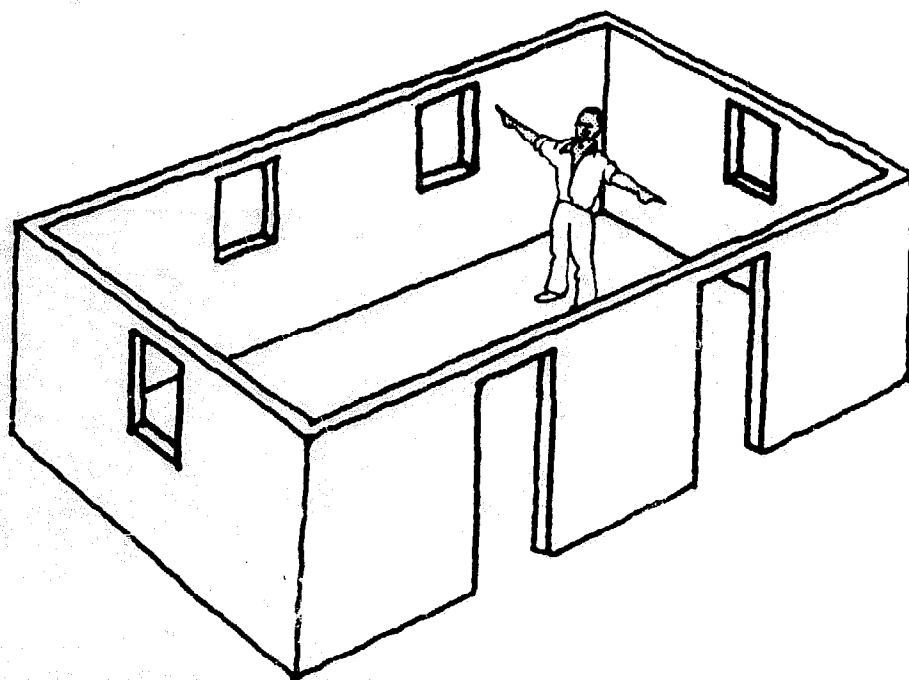
Place reinforced columns at the side of each door and window.



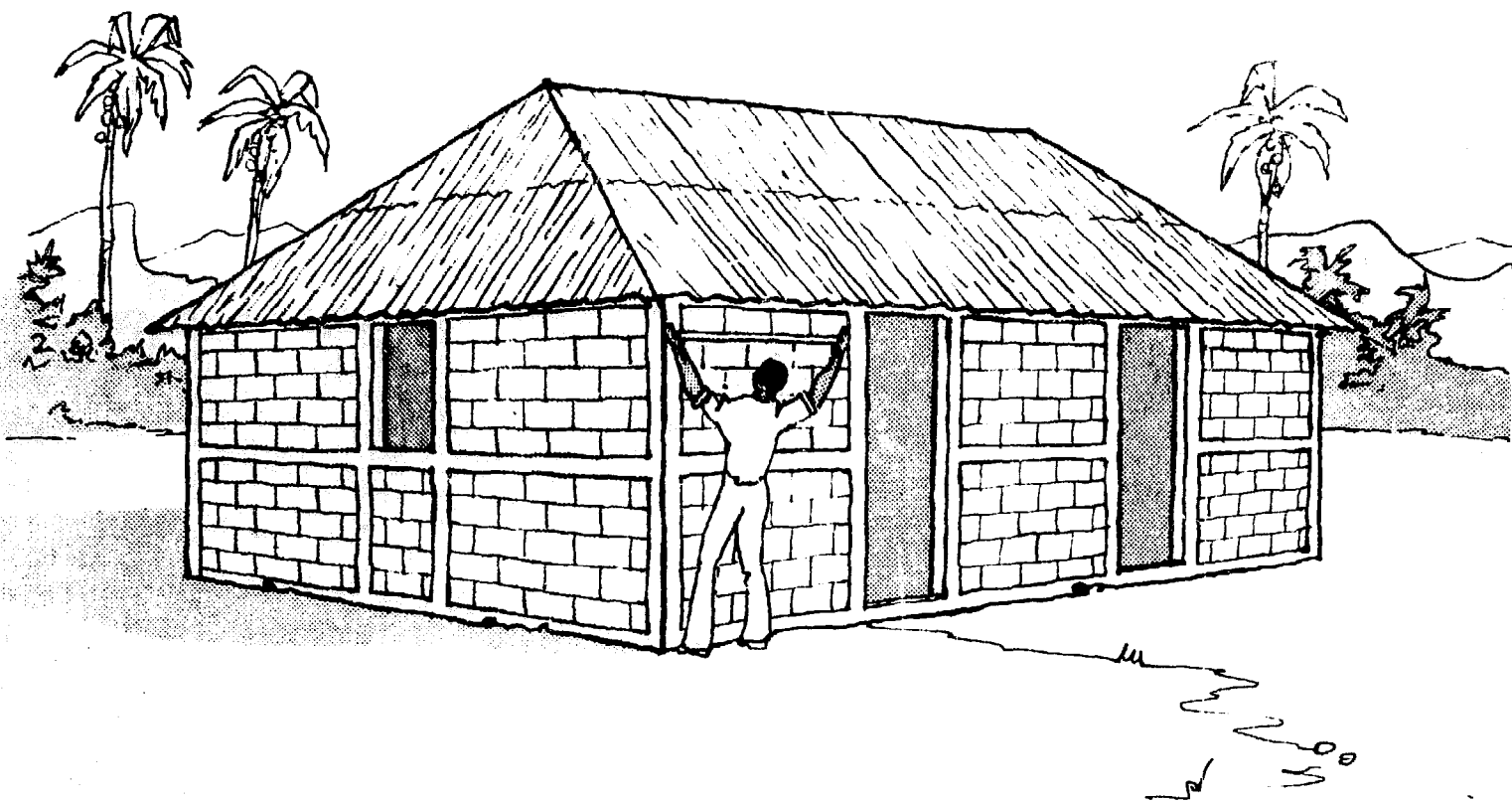
Build a reinforced concrete ring beam in the center of each wall.



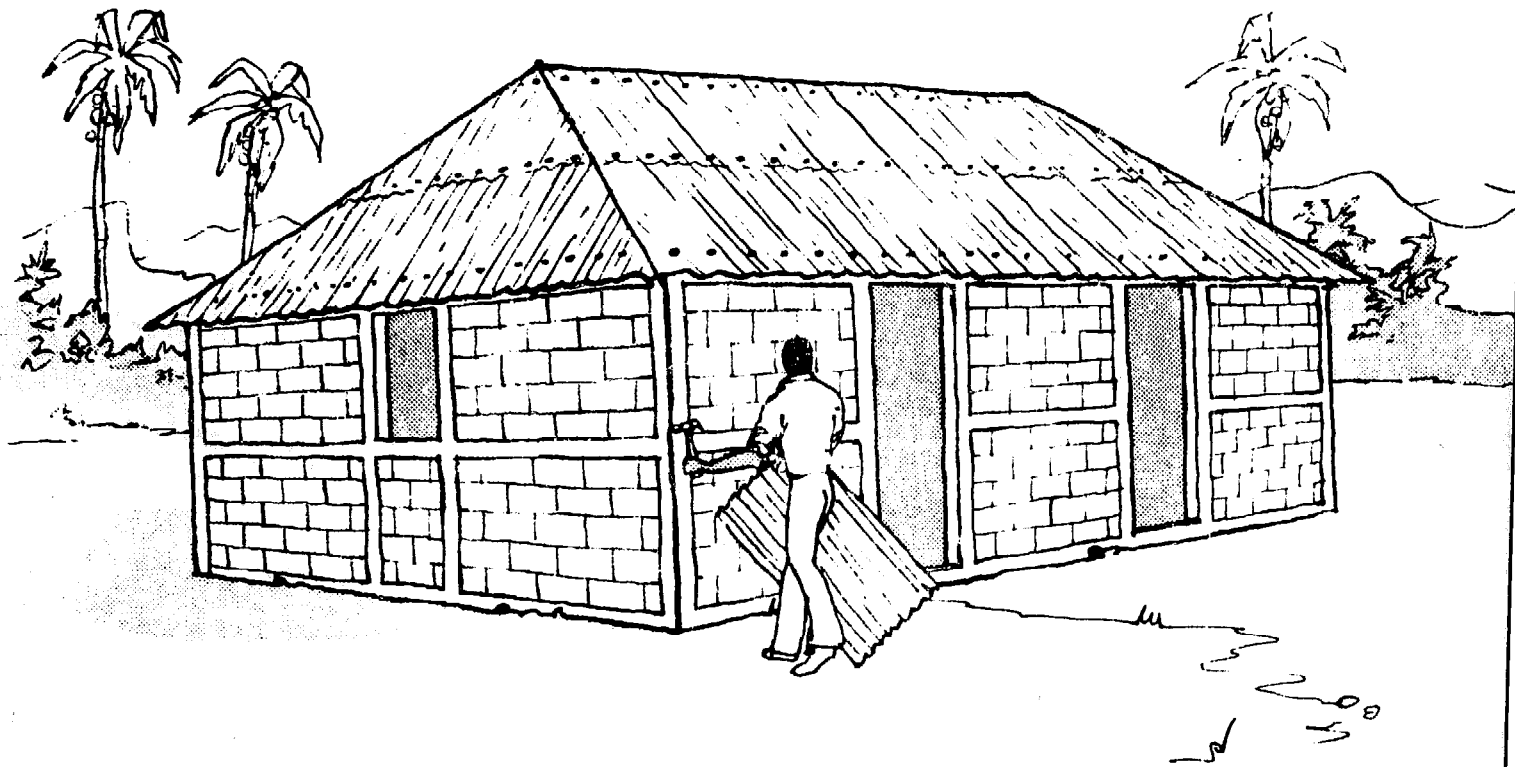
Interior walls should be built using columns and ring beams also, and they should be fastened securely to the outer walls. Doors should be placed in the center of the wall for maximum strength.



The house should be balanced by placing doors and windows opposite each other.



Each door or window should be a minimum of 36 inches from the corner.
Doors and windows should also be separated by a distance of 36 inches.



Fasten each galvanized sheet securely to the roof. Use a minimum of 12 nails for each sheet.