

Deluxe Starter Kit

Deluxe Starter Kit Includes:

The Growing Apiary Kit:

- 2 9 1/8" Assembled Hive Bodies
- 2 6 5/8" Assembled Supers
- 20 9 1/8" Assembled #1 Frames
- 20 8 1/2" Waxed Rite-Cell® Foundation
- 20 6 1/4" Assembled #1 Frames
- 20 5 5/8" Waxed Rite-Cell® Foundation
- 1 Assembled Telescoping Cover
- 1 Assembled Inner Cover
- 1 Assembled Bottom Board
- 1 Entrance Reducer
- 1 Unassembled Cedar Hive Stand

The Clothing Starter Kit:

- 1 Cotton/Poly Coverall With Elastic At Cuffs And Foot Openings (state your size SM, M, L, XL, XXL) With Attached Zipper Veil
- 1 Mesh Helmet
- 1 Pair Vented Leather Gloves (state your size)

Plus These Additional Items:

- 1 Pro-Feeder® w/Float
- 1 Metal Queen Excluder
- 1 4" x 7" Stainless Steel Smoker w/Guard
- 1 Package Smoker Fuel
- 1 10" Hive Tool
- 1 Bee Brush
- 1 Beekeeper's Handbook

Everything you need to get started in beekeeping in one easy package!



If you want a complete package to get started in beekeeping, this is the kit for you! This kit includes a complete clothing starter kit, all of the woodenware found in the growing apiary kit, as well as the basic tools needed for beekeeping. You will want to read your terrific educational book, "The Beekeeper's Handbook", right away in order to prepare yourself for your new adventure in beekeeping! Get your hive bodies primed and painted (see pages 19 & 20), order your bees (see our authorized dealer page for dealers listed in **bold** that carry packaged bees) and get started in one of the most fascinating hobbies on earth!

Shipping weights will be a total of 3 packages 1 at 14 lbs., 1 at 41 lbs., and 1 at 50 lbs. with Wood Frames; total of 3 packages 1 at 15 lbs., 1 at 36 lbs. and 1 at 40 lbs. with Standard Plastic Frames.

WW-745 Deluxe Beekeeping Starter Kit - Wood Frames\$349.95

WW-744 Deluxe Beekeeping Starter Kit - Standard Plastic Frames\$335.95

1 Toll Free Order Line: 800-880-7694

Fax: 218-675-6156

Frames


Unassembled Frames

Our unassembled frames have been precisely cut to ensure fit and durability. Made of dense pine, these frames will last for years.



Wedged Top Bar for use with solid or wired wax foundations.

Grooved Top Bar for use with plastic based foundations such as Rite-Cell® or Duragilt.

Tip: Soak tips of end bars in water for 15 minutes before nailing to prevent splitting.

Nails sold separately and can be found on page 24.

#2 Frames are subject to availability and are sold as is.

Unassembled Frames							
9 1/8" Unassembled Frames		1 - 49	50 - 99	100 - 499	500 - 999	1000 - 4999	5000+
● #1 Grade Frames	WW-625	\$.85	\$.69	\$.60	\$.58	\$.55	CALL
● #2 Grade Frames	WW-626			\$.51	\$.49	\$.48	CALL
7 1/4" Unassembled Frames							
● #1 Grade Frames	WW-640	\$.85	\$.69	\$.60	\$.58	\$.55	CALL
6 1/4" Unassembled Frames							
● #1 Grade Frames	WW-630	\$.82	\$.67	\$.59	\$.57	\$.54	CALL
● #2 Grade Frames	WW-632			\$.50	\$.48	\$.47	CALL
5 3/8" Unassembled Frames							
● #1 Grade Frames	WW-635	\$.82	\$.67	\$.59	\$.57	\$.54	CALL

Ship wt. 65 lbs. per 100 of 9 1/8". Ship wt. 50 lbs. per 100 of 6 1/4".
 Ship wt. 56 lbs. per 100 of 7 1/4". Ship wt. 48 lbs. per 100 of 5 3/8".

Prices do not include shipping charges.

Pre-Assembled Frames

Glued Joints For Extra Durability!



● 9 1/8" Pre-Assembled Frames	
WW-900 #1 Grade Waxed Rite-Cell®	
1-19	\$2.65
20-219	\$1.99
220-459	\$1.85
460-859	\$1.78
860+	CALL

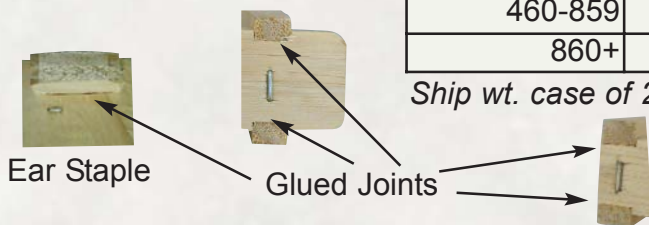
Ship wt. case of 20 - 22 lbs.

● 7 1/4" Pre-Assembled Frames	
WW-915 #1 Grade Waxed Rite-Cell®	
1-19	\$2.65
20-219	\$1.99
220-459	\$1.85
460-859	\$1.70
860+	CALL

Ship wt. case of 20 - 21 lbs.

● 6 1/4" Pre-Assembled Frames	
WW-920 #1 Grade Waxed Rite-Cell®	
1-19	\$2.60
20-219	\$1.90
220-459	\$1.75
460-859	\$1.65
860+	CALL

Ship wt. case of 20 - 17 lbs.



By both gluing and stapling our frames, we have a top-quality product that can't be beat! When you leave the assembling to us, all the blowouts end up in our refuse pile, not yours! Assembled frames are shipped to you with waxed Rite-Cell® already inserted so all that's left for you to do is install them in your boxes.

Basic Starter Kit

The Basic Starter Kit Includes:

The Complete Hive Body Kit:

- 1 9 5/8" Assembled Hive Body
- 10 9 1/8" Assembled #1 Frames
- 10 8 1/2" Waxed Rite-Cell® Foundation
- 1 Assembled Telescoping Cover
- 1 Assembled Inner Cover
- 1 Assembled Bottom Board
- 1 Entrance Reducer

Plus These Additional Items:

- 1 Boardman Entrance Feeder
- 1 10" Hive Tool
- 1 Pair Economy Leather Gloves Size Large
- 1 Alexander Bee Veil
- 1 Pro-Bellow Smoker w/Guard
- 1 The New Starting Right With Bees

Prices do not include shipping charges.



If you're looking to get started on a budget, this is a great way to begin! This kit includes gloves and a veil (you will need to wear heavy clothing for added protection), hive tool, smoker, the booklet **The New Starting Right with Bees**, boardman entrance feeder and all of the woodenware found in the complete hive kit. About a month after installing your bees, you will need to add another brood chamber and then supers when nectar flows occur. (See hive kits and super kits on pages 4 & 5) See our authorized dealer page for dealers listed in **bold** that carry packaged bees. *Ship wt. 41 lbs.*

WW-725 Assembled Starter Kit.....\$135.95

Premium Beehive Paint



See all of our paint products on pages 19 & 20

Painting on a budget? Try our Standard Beehive Paint which is available in 5 gallon pails with your choice of a flat or semi-gloss finish.

See pages 19 & 20 for our shipping special on paint!

Don't Forget The Paint!

We are often asked "What makes our Premium paint better than the rest?" Our paint is specifically formulated for painting beehives. It has a higher solid content than store paint so you get better coverage but it doesn't prohibit the paint from "breathing". The breathing process allows moisture to be released through invisible pores within the wood while still resisting exterior moisture.



Standard Beehive Paint

Try our new Quick Coat Stain! You get great coverage in one application and there is no need for primer!



Growing Apiary Kit

*Expanding your bee yard is made easy
with one of our Mann Lake Growing Apiary Kits!*



The Growing Apiary Kit contains the following:

One Complete Hive Body Kit:

- 1 9 5/8" Assembled Hive Body
- 10 9 1/8" Assembled #1 Frames
- 10 8 1/2" Waxed Rite-Cell® Foundation
- 1 Assembled Telescoping Cover
- 1 Assembled Inner Cover
- 1 Assembled Bottom Board
- 1 Entrance Reducer

Two Assembled 6 5/8" Super Kits:

- 2 6 5/8" Assembled Super
- 20 6 1/4" Assembled #1 Frames
- 20 5 5/8" Waxed Rite-Cell® Foundation

One Assembled 9 5/8" Hive Body Kit:

- 1 9 5/8" Assembled Hive Body
- 10 9 1/8" Assembled #1 Frames
- 10 8 1/2" Waxed Rite-Cell® Foundation

Also Includes:

- 1 Unassembled Cedar Hive Stand

Available With Assembled Wood Frames or Wax Coated Standard Plastic Frames!

Are you looking to add a new colony this season? With our Growing Apiary Kit, it couldn't be more effortless! You will have all of the woodenware needed for a season of beekeeping with a new package or nuc. Your new colony should fill up the first brood chamber within a month, at which time you will need to add your second deep box and turn the entrance reducer from the smallest opening that you started with, to the middle-sized opening. You will want to continuously feed your colony sugar syrup while they are drawing out the comb. It takes a lot of energy to make wax! When nectar flows occur, you will need to add your honey supers and remove the entrance reducer completely until fall. Note: It may take 2 seasons for your new colony to completely draw out the comb in the supers. Bees are not included.

See our authorized dealer page for dealers listed in **bold** that carry packaged bees.

WW-740 Growing Apiary Kit - **Wood Frames**.....\$189.95
Shipping weights will be a total of 2 packages 1 at 41 lbs. and 1 at 50 lbs.

WW-741 Growing Apiary Kit - **Waxed Standard Plastic Frames**.....\$169.95
Shipping weights will be a total of 2 packages 1 at 39 lbs. and 1 at 44 lbs.

Assembled Kits

Assembled Complete Hive Body Kit - Wood Frames



Start a new colony with our Complete Hive Kit. Once your bees draw out most of the foundation, you can add a second deep hive body.

- 1 9 5/8" Assembled Hive Body
- 10 9 1/8" Assembled #1 Frames
- 10 8 1/2" Waxed Rite-Cell® Foundation
- 1 Assembled Telescoping Cover
- 1 Assembled Inner Cover
- 1 Assembled Bottom Board
- 1 Entrance Reducer

WW-730 9 5/8" Complete Hive Kit - **Wood Frames** Ship wt. 35 lbs. 1-4.....\$72.95
5+.....\$69.95

Assembled Complete Hive Body Kit - Standard Plastic Frames

- 1 9 5/8" Assembled Hive Body
- 10 9 1/8" Standard Wax Coated Frames
- 1 Assembled Telescoping Cover
- 1 Assembled Inner Cover
- 1 Assembled Bottom Board
- 1 Entrance Reducer



All assembled hive body and super kits are secured with glue-coated rust free ring nails for strength and stability.

WW-731 9 5/8" Complete Hive Kit - **Standard Plastic Frames** Ship wt. 33 lbs. 1-4.....\$69.25
5+.....\$67.95

Garden Hivery

Who says a colony of bees can't be an elegant display in your yard? With our beautiful Garden Hivery, your grounds can be enhanced by both the pollination taking place and the upscale look of your colony. Retrofit an existing hive with the cover only or purchase the Hivery Kit and start a new colony. The hive shown here is finished with our Quick Coat Natural Stain. (See page 5 for for hive body and super kits used for colony expansion.)

- 1 Garden Hivery Copper Cover
- 1 9 5/8" Assembled Hive Body
- 10 9 1/8" Assembled #1 Frames
- 10 8 1/2" Waxed Rite-Cell® Foundation
- 1 Assembled Inner Cover
- 1 Assembled Bottom Board
- 1 Entrance Reducer

*Pollination
or
Decoration!*



See Page 54

Prices do not include shipping charges.

WW-401 Copper Telescoping Hive Kit Ships 2 packages 1 at 30 lbs. (OS1) and 1 at 24 lbs...\$99.95
WW-754 Garden Hivery Copper Cover Without Inner Cover Ship wt. 30 lbs. (OS1).....\$46.95
WW-755 Garden Hivery Copper Cover With Inner Cover Ship wt. 30 lbs. (OS1).....\$51.95

Assembled Kits

Assembled 9 5/8" Hive Body Kit - Wood Frames

This Deep Hive Body Kit can be added to your standard 10 frame equipment to replace an old brood chamber or added on as a second story to an expanding colony. *Ship wt. 21 lbs.*

- 1 9 5/8" Assembled Hive Body
- 10 9 1/8" Assembled #1 Frames
- 10 8 1/2" Waxed Rite-Cell® Foundation

WW-825 9 5/8" Hive Body Kit - **Wood Frames** 1-4.....\$41.50
5-24...\$38.95
25+....CALL



Assembled 9 5/8" Hive Body Kit - Standard Plastic Frames

Perfect if you prefer the plastic frames over wood. This hive kit arrives assembled and ready to paint! *Ship wt. 18 lbs.*

- 1 9 5/8" Assembled Hive Body
- 10 9 1/8" Standard Wax Coated Frames

WW-826 9 5/8" Hive Body Kit - **Standard Plastic Frames** 1-4.....\$36.95
5-24...\$33.25
25+....CALL



Assembled 6 5/8" Super Kit - Wood Frames



Even if you enjoy putting together your own equipment, you aren't always prepared for surprise nectar flows. This Super Kit is ready to go when your bees are! *Ship wt. 16 lbs.*

- 1 6 5/8" Assembled Super
- 10 6 1/4" Assembled #1 Frames
- 10 5 5/8" Waxed Rite-Cell® Foundation

WW-830 6 5/8" Super Kit - **Wood Frames** 1-4.....\$37.95
5-24...\$34.95
25+....CALL

Assembled 6 5/8" Super Kit - Standard Plastic Frames

You will be ready when the bees are with this Assembled Super Kit. *Ship wt. 14 lbs.*

- 1 6 5/8" Assembled Super
- 10 6 1/4" Standard Wax Coated Frames

WW-831 6 5/8" Super Kit - **Standard Plastic Frames** 1-4.....\$31.95
5-24...\$28.95
25+....CALL



Deep brood chambers too heavy?
Try using 6 5/8" supers as brood
chambers instead!



Migratory Pallets

New!



Assembled Migratory Pallets

- Made with all **NEW** material
- Completely assembled
- Available treated or untreated
- 1/2" exterior plywood decking
- 2" x 4" runners
- 1" x 6" cross braces
- Available with U or W shape pallet clips

Standard pallet with U shaped pallet clips measures 47" x 32 1/2".

Standard pallet with W shaped pallet clips measures 47" x 33 1/4"

**Call us at 800-880-7694
for a custom quote!**

Prices do not include shipping charges.

New Economical Pallet Strap

New!



Our new Polypropylene Pallet Straps are priced right! Each 1" strap measures 130" in length and comes with an adjustable quick release buckle so hive inspections are a snap! *Ship wt. 1 lb.*

HD-825 Polypropylene Pallet Strap.....\$1.50

Kevlock Tie Down Strap



HD-805

HD-805 Kevlock Tie Down Strap 9 ft. 1 - 24..\$10.55
25+.....\$ 9.55

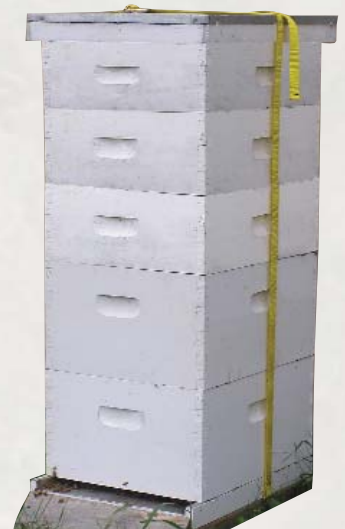
HD-810 Kevlock Tie Down Strap 12 ft. 1 - 24..\$10.95
25+.....\$10.55

HD-815 Kevlock Pallet Strap 10 ft.....\$13.95

Kevlock Pallet Straps

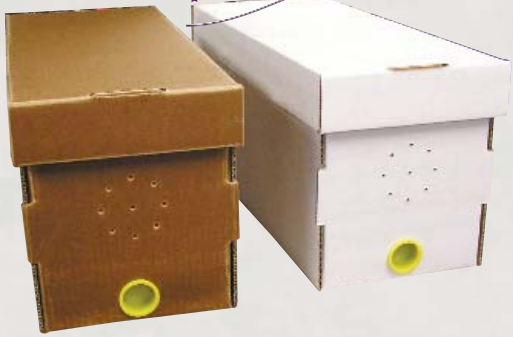


HD-815



Nuc Boxes

New!



Shown with optional 1 1/2" cap plug

Wax Coated Cardboard Nuc Boxes

These nucs put the profit back in nuc sales! Ship nucs without box returns and frame exchanges. At a fraction of the cost of wood nucs or screened wood packages you simply can't go wrong! Holds 5 - 9 1/8" frames.

- Wax impregnated for greater durability
- Lightweight, easy to handle
- Ships flat to save shipping charges
- Simple to assemble
- Makes nuc sales more cost effective than ever before
- Optional cap plug and banding straps

NB-200 Brown Waxed Nuc Box	1 - 25.....	\$5.45
	26 - 99	\$4.85
	100 - 249.....	\$4.25
	250+.....	\$3.95

When you are ready to transport your nucs, seal the entrance of your nuc box with this 1 1/2" cap plug. *Ship wt. 1 lb.*

FD-147 1 1/2" Cap Plug.....\$12

NB-250 White Waxed Nuc Box	1 - 25.....	\$5.45
	26 - 99	\$4.85
	100 - 249.....	\$4.25
	250+.....	\$3.95



FD-147



See Page 54

1-4 Ship wt. 5 lbs. each.
5+ Ship OS-2.

Nuc Straps

Our Poly Nuc Strap is designed to fit around your nuc box for secure handling. Each polypropylene strap features an adjustable ladder buckle and measures 3/4" x 60" so it is plenty long to fit over a feeder pail as well. Our Rubber Nuc strap is nonadjustible and fits snug around the box and cover. *Ship wt. 1 lb. each*

NB-400 Polypropylene Nuc Strap.....\$69

NB-405 Rubber Nuc Strap (not shown).....\$25



Ladder Buckle

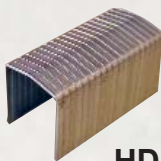
Prices do not include shipping charges.

Riteway® Stapler

Our jam-resistant stapler is perfect for assembling the plastic or cardboard nuc boxes and the Riteway® shipping boxes. It also works great on the Black Jack winter wrap.

HD-280 Riteway® Stapler *Ship wt. 2 lbs.*.....\$39.95

HD-281 Box of 5,000 1/2" Riteway® Staples *Ship wt. 2 lbs.*.....\$ 9.95



HD-281



HD-280

Nuc Boxes



Unassembled Wooden Nuc Box

- Unassembled commercial grade
- Holds five 9 1/8" frames
- Hand holds on two sides for easy carrying

WW-110 Unassembled Wooden Nuc Box *Ship wt. 8 lbs.*

1-24.....	\$9.95
25-49.....	\$8.95
50-249.....	\$8.50
250+.....	CALL



Unassembled Wooden Nuc Box With Assembled Migratory Cover & Bottom Board

- Unassembled commercial grade nuc box
- Holds five 9 1/8" frames
- Hand holds on two sides for easy carrying
- Assembled Bottom Board
- Assembled Migratory Cover

WW-114 Unassembled Wooden Nuc Box With Assembled Bottom Board and Migratory Cover. *Ship wt. 16 lbs.*

1-24.....	\$27.50
25-49.....	\$25.50
50-249.....	\$23.00
250+.....	CALL

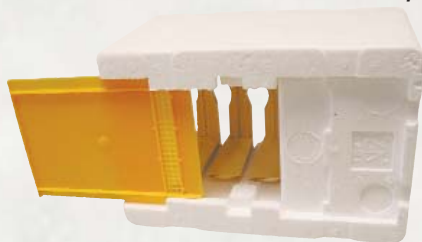
Styrofoam Mini-Mating Nuc

- 3 mini frames
- Styrofoam with built-in feeder
- Closeable entrance
- Completely assembled

Foundation not included.

IN-140 Mini-Mating Nucs	1 - 4.....	\$15.95
	5 - 99.....	\$14.95
	100+	CALL
	<i>Ship wt. 2 lbs. each.</i>	

- Built-in feeder
- Built-in excluder keeps queen out of the feeder
- Easy access frames
- Ventilation grid
- Entrance slides open and closed
- Removable bottom offers extra ventilation and easy clean out



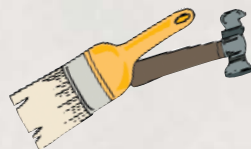
Unassembled Boxes

Our hive bodies and supers are crafted with our custom built equipment beginning with a precision cut box joint. The second machine trims, rabbits, pre-drills and cuts the easy grip hand-holds. Choose your assembled or unassembled boxes from three grades of pine: Select, Commercial or Budget.



It is important to note that the bees don't care which grade you opt for and all will serve adequately as their home.

Because of fluctuations in the lumber markets, prices are subject to change without notice and do not include shipping charges. For a shipping quote call 800-880-7694.



**Don't Forget The
Paint And Nails!**

See Pages 19, 20 & 24

SELECT: This grade is clear and without imperfections with the exception of the smallest tight knots. If it is important to you to have visually pleasing boxes, you will choose this grade.

COMMERCIAL: This is the all-around most serviceable, yet affordable grade, allowing for knots which are tight and solid. The clarity of the wood is below a select but strength and functionality are not impacted.

BUDGET: If cost is your biggest concern, you will find these boxes priced for you. This grade can have some loose knots, cracks and milling defects. Many prefer using a budget grade for their supers as they do not see the heavy usage that the brood chambers do. Budgets are sold AS IS and are sold based on availability.

Match the correct woodenware, frames and foundation by using the colored circles.

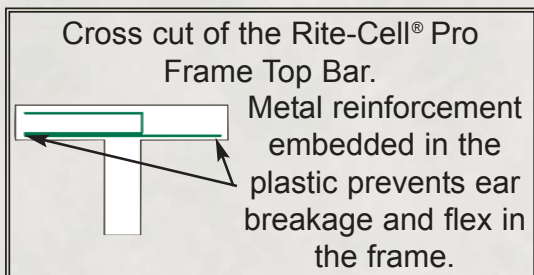
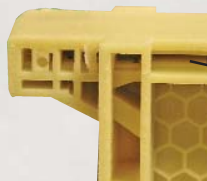
- 9 5/8" Woodenware, frames & foundation
- 7 5/8" Woodenware, frames & foundation
- 6 5/8" Woodenware, frames & foundation
- 5 5/8" Woodenware, frames & foundation

Unassembled Hive Bodies & Supers

SIZE	ITEM#	GRADE	1 - 49	50 - 249	250-499	500+
● 9 5/8" Hive Body	WW-500	Select	\$12.95	\$10.50	\$ 9.95	CALL
● 9 5/8" Hive Body	WW-600	Commercial	\$12.00	\$ 9.50	\$ 8.05	CALL
● 9 5/8" Hive Body	WW-602	Budget	\$ 9.35	\$ 7.95	\$ 7.30	CALL
● 7 5/8" Hive Body	WW-599	Commercial	\$10.95	\$ 9.95	\$ 7.90	CALL
● 7 5/8" Hive Body	WW-598	Budget	\$ 9.35	\$ 8.60	\$ 7.30	CALL
● 6 5/8" Medium Super	WW-505	Select	\$ 9.50	\$ 8.25	\$ 8.05	CALL
● 6 5/8" Medium Super	WW-605	Commercial	\$ 9.50	\$ 6.85	\$ 6.35	CALL
● 6 5/8" Medium Super	WW-607	Budget	\$ 6.50	\$ 5.85	\$ 5.45	CALL
● 5 5/8" Super	WW-610	Commercial	\$ 7.95	\$ 6.85	\$ 6.35	CALL

Plastic Frames

Our top bar is deeper, making a more rigid frame to reduce jamming.



Rite-Cell® Pro Frame



Patent Pending

- Reinforced top bar
- Frame is 5 times more rigid than standard plastic frame
- Especially designed for auto load extracting systems
- 100% beeswax coating
- One-piece design requires no assembly
- Impervious to wax moth or rodent damage.

● **PF-500 9 1/8" Rite-Cell® Pro Frame**

1-29	\$2.55
30-179	\$2.20
180-359	\$1.92
360-599	\$1.88
600-1,019	\$1.85
1,020+	CALL

30 Frames per case 25# per case

● **PF-520 6 1/4" Rite-Cell® Pro Frame**

1-29	\$2.30
30-179	\$2.09
180-359	\$1.89
360-599	\$1.84
600-1,019	\$1.79
1,020+	CALL

30 Frames per case 19# per case

Made
In
The
USA!

Standard Wax Coated Plastic Frame & Foundation

- 100% beeswax coating
- One-piece design requires no assembly
- Impervious to wax moth or rodent damage

Perfect for the truly cost conscious beekeeper!



● **PF-100 9 1/8" Standard Frame**

1-29	\$2.20
30-179	\$1.58
180-359	\$1.50
360-599	\$1.48
600-1,019	\$1.36
1,020+	CALL

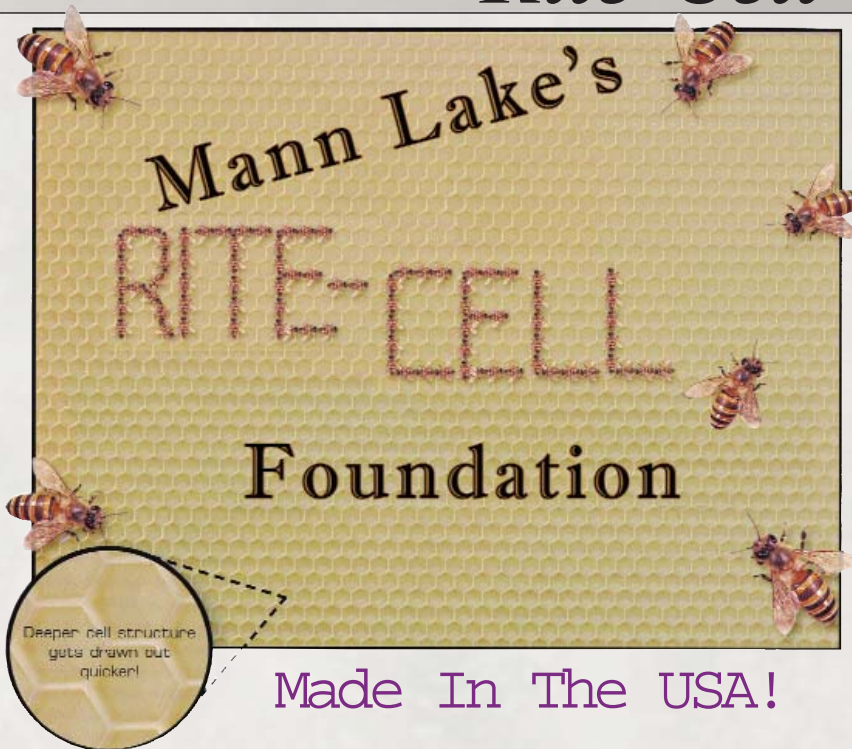
30 Frames per case 24# per case.

● **PF-120 6 1/4" Standard Frame**

1-29	\$2.00
30-179	\$1.43
180-359	\$1.38
360-599	\$1.30
600-1,019	\$1.28
1,020+	CALL

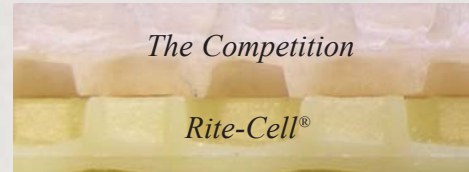
30 Frames per case 18# per case.

Rite-Cell® Foundation



Made In The USA!

- Requires no reinforcement.
- Slips easily into a groove top frame.
- Sharper cell edges for quick acceptance.
- Wax moths cannot damage.
- Available with or without a 100% beeswax coating.
- Deeper cell depth with highest definition.
- Textured cell interior.
- Heavy weight plastic holds up to extracting.



The core of Rite-Cell® is heavier making it more durable.

The Competition

Rite-Cell®

Our sheets are longer to insure they will stay in your frame during extracting.

Prices do not include shipping charges.

Waxed Rite-Cell® Foundation

Part Number	Size	1-99	100-999	1,000-2,499	2,500-4,999	5,000+	Wt. Per 10 Sheets	Sheets Per Case
● FN-500	8 1/2"	\$.95	\$.89	\$.86	CALL	CALL	5 lbs.	100 each/45 lbs.
● FN-510 Black	8 1/2"	\$.95	\$.89	\$.86	CALL	CALL	5 lbs.	100 each/45 lbs.
● FN-530	6 1/2"	\$.95	\$.89	\$.86	CALL	CALL	4 lbs.	100 each/32 lbs.
● FN-520	5 5/8"	\$.82	\$.76	\$.74	CALL	CALL	3 lbs.	100 each/27 lbs.
● FN-525 Black	5 5/8"	\$.82	\$.76	\$.74	CALL	CALL	3 lbs.	100 each/27 lbs.

Unwaxed Rite-Cell® Foundation

● FN-550	8 1/2"	\$.89	\$.85	\$.84	CALL	CALL	4 lbs.	100 each/40 lbs.
● FN-560 Black	8 1/2"	\$.89	\$.85	\$.84	CALL	CALL	4 lbs.	100 each/40 lbs.
● FN-536	6 1/2"	\$.89	\$.85	\$.84	CALL	CALL	3 lbs.	100 each/29 lbs.
● FN-570	5 5/8"	\$.77	\$.74	\$.68	CALL	CALL	3 lbs.	100 each/24 lbs.
● FN-580 Black	5 5/8"	\$.77	\$.74	\$.68	CALL	CALL	3 lbs.	100 each/24 lbs.

Match the correct woodenware, frames and foundation by using the colored circles.

- 9 5/8" Hive Bodies
- 9 1/8" Frames
- 8 1/2" Foundation
- 7 5/8" Supers
- 7 1/4" Frames
- 6 1/2" Foundation

Frame holds foundation and rests inside the hive body or super



Hive Body or Super, the outside wooden box that holds frames
Foundation, fits inside the frame



- 6 5/8" Hive Bodies
- 6 1/4" Frames
- 5 5/8" Foundation
- 5 5/8" Hive Bodies
- 5 3/8" Frames
- 4 3/4" Foundation

Foundation

Thin Surplus Foundation

Item Number	Size	Quantity Per Package	Price Per Package	Ship Weight
FN-135	3 7/8" x 16 1/2"	10 Sheets	\$ 8.50	2 lbs.
FN-136	3 7/8" x 16 1/2"	25 lbs./Approx 650 Sheets	\$ 164.95	31 lbs.
FN-145	4 1/8" x 17"	10 Sheets	\$ 8.50	2 lbs.
FN-146	4 1/8" x 17"	25 lbs./Approx 500 Sheets	\$ 164.95	31 lbs.
FN-155	4 3/8" x 16 1/2"	10 Sheets	\$ 8.50	2 lbs.
FN-156	4 3/8" x 16 1/2"	25 lbs./Approx 500 Sheets	\$ 164.95	31 lbs.
FN-165	4 3/4" x 16 1/2"	10 Sheets	\$ 8.50	2 lbs.
FN-166	4 3/4" x 16 1/2"	25 lbs./Approx 450 Sheets	\$ 164.95	31 lbs.
FN-185	5 1/4" x 16 3/4"	10 Sheets	\$ 8.50	2 lbs.
FN-186	5 1/4" x 16 3/4"	25 lbs./Approx 400 Sheets	\$ 164.95	31 lbs.
FN-195	5 5/8" x 16 1/2"	10 Sheets	\$ 8.50	2 lbs.
FN-197	5 5/8" x 16 1/2"	25 lbs./Approx 400 Sheets	\$ 164.95	31 lbs.

Thin Surplus

100%
Beeswax

Wired Foundation With Hooks

Item Number	Size	Quantity Per Package	Price Per Package	Ship Weight
FN-205	4 3/4" x 16 3/4"	10 Sheets	\$ 8.50	2 lbs.
FN-207	4 3/4" x 16 3/4"	25 lbs./Approx 300 Sheets	\$ 154.95	31 lbs.
FN-235	5 5/8" x 16 3/4"	10 Sheets	\$ 8.50	2 lbs.
FN-237	5 5/8" x 16 3/4"	25 lbs./Approx 275 Sheets	\$ 154.95	31 lbs.
FN-260	8 1/2" x 16 3/4"	10 Sheets	\$ 11.95	2 lbs.
FN-261	8 1/2" x 16 3/4"	25 lbs./Approx 175 Sheets	\$ 154.95	31 lbs.

Wired
Foundation
With
Hooks

100%
Beeswax

Reinforced with embedded wires. Wired without hook has wire that does not extend beyond the foundation. Wired with hook has wires that extend beyond the foundation which create a hook to assist in securing to your wedged-top frame. **NOTE:** We recommend adding two cross-wires through the middle two holes of the end bar of the frame (creating an X across the foundation) for extra stability. Spur Embedder HD-145 on page 25.

Wired Foundation Without Hooks

Item Number	Size	Quantity Per Package	Price Per Package	Ship Weight
FN-215	4 3/4" x 16 3/4"	10 Sheets	\$ 8.50	2 lbs.
FN-217	4 3/4" x 16 3/4"	25 lbs./Approx 300 Sheets	\$ 154.95	31 lbs.
FN-225	5 5/8" x 16 3/4"	10 Sheets	\$ 8.50	2 lbs.
FN-227	5 5/8" x 16 3/4"	25 lbs./Approx 275 Sheets	\$ 154.95	31 lbs.
FN-245	8 1/2" x 16 3/4"	10 Sheets	\$ 11.95	2 lbs.
FN-246	8 1/2" x 16 3/4"	25 lbs./Approx 175 Sheets	\$ 154.95	31 lbs.

Wired
Foundation
Without
Hooks

100%
Beeswax

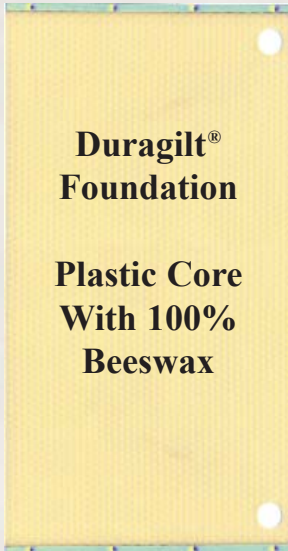
9 5/8" Hive Bodies	6 5/8" Hive Bodies
9 1/8" Frames	6 1/4" Frames
8 1/2" Foundation	5 5/8" Foundation
7 5/8" Supers	5 5/8" Hive Bodies
7 1/4" Frames	5 3/8" Frames
6 1/2" Foundation	4 3/4" Foundation



Foundation

Duragilt®

Duragilt® features a smooth plastic core and metal edges for stability with traditional cells embossed in a 100% beeswax outer layer. Use either wedged or grooved top bar.



**Duragilt®
Foundation**

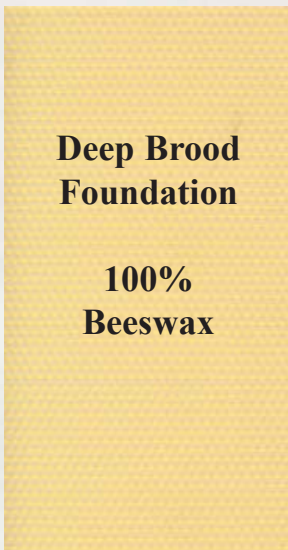
**Plastic Core
With 100%
Beeswax**

Duragilt® Foundation				
Item Number	Size	Quantity Per Package	Price Per Package	Ship Weight
● FN-115	4 3/4" x 16 7/8"	10 Sheets	\$ 8.95	3 lbs.
● FN-116	4 3/4" x 16 7/8"	50 Sheets	\$ 41.95	7 lbs.
● FN-117	4 3/4" x 16 1/2"	30 lbs./Approx. 330 Sheets	\$194.95	39 lbs.
● FN-110	5 5/8" x 16 3/4"	10 Sheets	\$ 9.50	3 lbs.
● FN-111	5 5/8" x 16 3/4"	50 Sheets	\$ 41.95	8 lbs.
● FN-112	5 5/8" x 16 3/4"	12 1/2 lbs./Approx. 112 Sheets	\$ 89.95	16 lbs.
● FN-113	5 5/8" x 16 3/4"	25 lbs./Approx. 225 Sheets	\$174.95	31 lbs.
● FN-105	8 1/2" x 16 7/8"	10 Sheets	\$ 12.95	3 lbs.
● FN-106	8 1/2" x 16 7/8"	50 Sheets	\$ 61.95	9 lbs.
● FN-107	8 1/2" x 16 7/8"	12 1/2 lbs./Approx. 75 Sheets	\$ 89.95	16 lbs.
● FN-108	8 1/2" x 16 7/8"	25 lbs./Approx. 150 Sheets	\$174.95	31 lbs.

Deep Brood Foundation

This is our traditional foundation made of 100% beeswax. Since there are no built-in supports, this foundation must be reinforced with support pins (page 23) and/or frame wire (page 23). Use with a wedged top bar.

Prices do not include shipping charges.



**Deep Brood
Foundation**

**100%
Beeswax**

Deep Brood Foundation				
Item Number	Size	Quantity Per Package	Price Per Package	Ship Weight
● FN-275	4 3/4" x 16 3/4"	10 Sheets	\$ 5.95	2 lbs.
● FN-277	4 3/4" x 16 3/4"	25 lbs./Approx 300 Sheets	\$139.95	29 lbs.
● FN-285	5 5/8" x 16 3/4"	10 Sheets	\$ 8.50	2 lbs.
● FN-287	5 5/8" x 16 3/4"	25 lbs./Approx 275 Sheets	\$139.95	30 lbs.
● FN-295	8 1/2" x 16 3/4"	10 Sheets	\$ 9.95	2 lbs.
● FN-296	8 1/2" x 16 3/4"	25 lbs./Approx 175 Sheets	\$139.95	30 lbs.

Mann Lake Ltd. is always in the market for clean rendered beeswax. If you have wax which you would like to sell, please feel free to call and get a current market quote. Only rendered wax is accepted. NO OLD COMBS OR CAPPINGS. 25 lb. minimum.

Foundation Machine

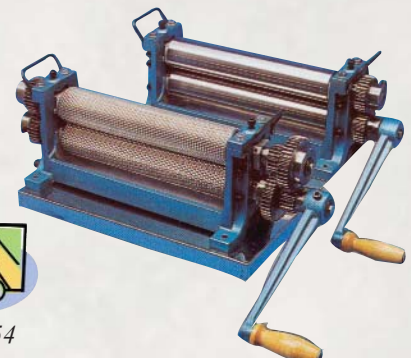
Now you can make your own beeswax foundation with the Mann Lake Foundation Machine! This manually operated foundation maker features industrial strength, heavy-duty rollers. The first one is smooth to form the sheet and the second roller embosses the cell structure. Available in a 4.9 mm or 5.1 mm cell size.

Measures 27" x 12" x 10" boxed.
Ships by truck 165 lbs.

HH-500 Foundation Machine.....\$2,565.00



See page 54



E-Mail: beekeeper@mannlakeltd.com

Website: mannlakeltd.com

Woodenware Accessories

WW-300

Assembled Telescoping Cover

Top lip extends down around the uppermost box, this cover has a galvanized metal top, completely assembled.



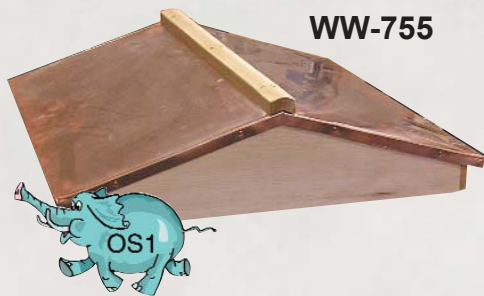
WW-300 Telescoping Cover Without Inner Cover *Ship wt. 9 lbs.*.....\$16.95

WW-301 Telescoping Cover With Inner Cover *Ship wt. 10 lbs.* 1-4.....\$21.50
5+.....\$20.35

WW-755

Garden Hivery Copper Cover

The decorative Hivery Cover is sturdy and fits standard 10-frame equipment and is fully assembled. *Ship wt. 30 lbs.*



WW-755 Garden Hivery Copper Cover With Inner Cover...\$51.95

See page 54

Assembled Inner Cover

Preserves the interior bee space when used with the Telescoping Cover or Hivery Cover and can also be used to clear bees from the supers with a bee escape. Masonite-free. *Ship wt. 4 lbs.*

WW-246 Inner Cover 1-4.....\$7.95
5+.....\$7.50

WW-246



Bee Escape is sold separately.

Bee Escape

The plastic Bee Escape is inserted into the slot on the inner cover which allows bees to escape out but prevents them from re-entering the super. *Ship wt. 1 lb.*

HD-665 Bee Escape.....\$2.95

HD-665



Inner Cover is sold separately.

Assembled Migratory Top Cover

NEW! Our Migratory Top Cover is available treated! Ships assembled. *Ship wt. 9 lbs.*

WW-364 Treated Migratory Top Covers 1 - 4.....\$9.95
5 - 50.....\$8.95
51 - 99.....\$8.65
100+.....CALL

TREATED!



WW-364

Our Migratory Top Cover will serve you well, allowing your colonies to be tightly spaced on pallets. Ships assembled. *Ship wt. 8 lbs.*

WW-365 Migratory Top Covers 1 - 4.....\$8.95
5 - 50.....\$7.95
51 - 99.....\$7.65
100+.....CALL



WW-365

Woodenware Accessories

Assembled Bottom Board



WW-310

Available treated - call for details!

Our Bottom Boards are screwed together to give you years of service. Constructed of 3/4" plywood, the Bottom Board is sold fully assembled and includes an entrance reducer. *Ship wt. 8 lbs.*

WW-310 Bottom Board 1-4.....\$9.95
5+.....\$8.95

Entrance Reducer

The Entrance Reducer fits snugly in the opening between the bottom board and your first brood chamber to control the size of the entrance to the hive. *Ship wt. 1 lb.*

WW-355 Entrance Reducer.....\$.99

WW-355



Assembled Wooden Varroa Screen Trap

WW-680



Both Varroa Traps are photographed with the WW-310 Bottom Board.(Bottom Board not included.)

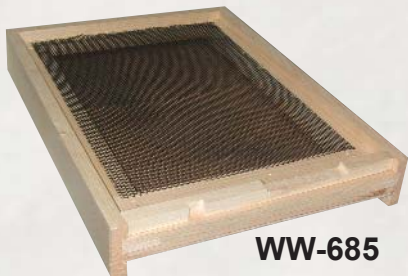
This screen is designed to be used with our regular bottom board (see WW-310 above). The space that is created with the screen allows mites to fall through to the bottom so that they cannot climb back up into the hive. Use with the replacement sticky board (DC-681, see below) for easy removal of mite debris. Note: Hive bodies must be removed to clean bottom board. *Ship wt. 3 lbs.*

WW-680 Varroa Screen Board 1-4\$9.95
5+\$8.95

Assembled Varroa Trap With Drawer

Versatile, fully assembled varroa trap, can be used with a standard bottom board or with just a hive stand. Drawer style means that you do not have to disassemble the hive to clean the trap. A replacement sticky board (DC-681, see below) can be placed inside the drawer to monitor or evaluate mite loads. *Ship wt. 10 lbs.*

WW-685 Varroa Trap With Drawer 1-4.....\$18.95
5+.....\$17.95



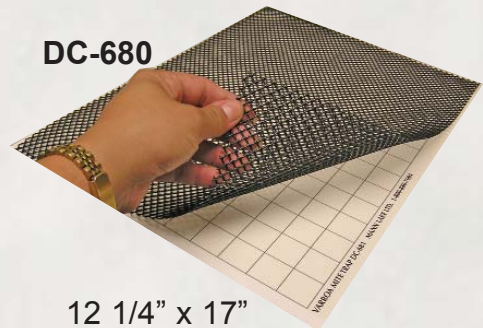
WW-685

Sticky Board

This sticky board can be used with or without the screen to monitor or diagnose a varroa infestation. If placed directly on the bottom board, the screen will be needed to keep the bees from the adhesive. When used in conjunction with a screened bottom board, the replacement sticky board can be used alone. The sticky board is conveniently printed with the grid lines to aid in determining the number of mites present. *Ship wt. 1 lb.*

DC-680 Sticky Board With Screen.....\$4.65

DC-681 Replacement Sticky Board\$2.80



DC-680

12 1/4" x 17"

Prices do not include shipping charges.

Hive Stand



WW-315

Our Hive Stand features a sloping plane to allow your bees easy access to the hive and it also serves to raise your hive off of the ground. Sold unassembled, includes nails and easy instructions. *Ship wt. 6 lbs.*

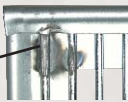
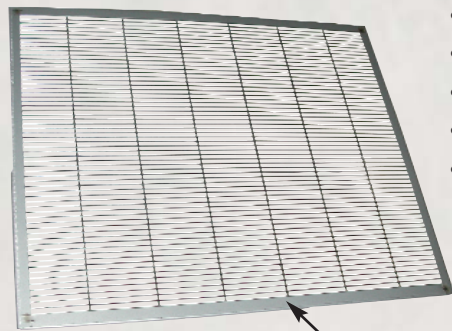
WW-305 Hive Stand Pine.....\$8.95

WW-315 Hive Stand Cedar.....\$9.95

Excluders & Pollen Traps

Queen Excluders

- Prevents the queen from producing brood in honey supers
- Computer controlled welding
- Precision wire spacing
- Fully plated and durable
- Available in crimped metal frame edge or wood bound edge



Welded
Corners



Crimped
Frame

Ship wt. 4 lbs. each.
Box of 25 Ship wt. 68 lbs.



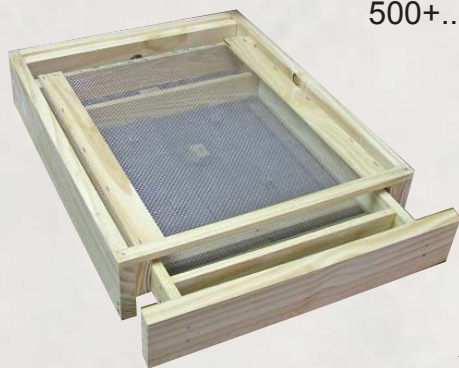
Ship wt. 4 lbs. each.
Box of 20 Ship wt. 54 lbs.

HD-120 Metal Bound 10 Frame Queen Excluders

1-29.....	\$5.50
30-99.....	\$5.35
100-499.....	\$4.75
500+.....	CALL

HD-122 Wood Bound 10 Frame Queen Excluders

1-29.....	\$9.95
30-99.....	\$9.25
100-499.....	\$9.05
500+.....	CALL



Assembled Deluxe Pollen Trap

- Bottom placement
- Can be left on year-round with closeable entrance
- Pull-out drawer for pollen removal
- Protective barrier to prevent pollen contamination

WW-210 Deluxe Pollen Trap Ship wt. 12 lbs.....\$59.95

Pollen Grains



Drawer Pollen Trap

- Fits between brood chamber and super
- "Easy harvest" pull out drawer

Close trap entrance for 2-3 days every week to allow the bees sufficient stores.

Ship wt. 8 lbs.

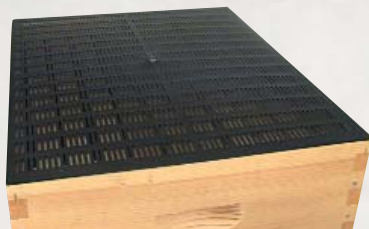
WW-200 Pollen Trap.....\$27.95



*Some assembly required.
Nails not included.*

Propolis Trap

- Flexible plastic lasts for years
- Position in place of inner cover, smooth side up



19 7/8" x 16 1/4" x 1/8"

When full (1-5 weeks), place in freezer overnight inside a plastic bag then twist the trap and whack as you would to remove cubes from an ice tray. *Note: Autumn is the typical peak propolis production time of year.* Ship wt. 2 lbs. each.

HD-370 Propolis Trap 1-10.....\$8.95
11+.....\$7.95

Premium Paint



What makes our Premium Paint better than anything you can find in your local hardware store?

- Industrial quality developed specially for the beekeeping industry
- Higher solid content than conventional paints
- Goes on smoothly
- High blister resistance

1 gallon of paint will cover approximately 50 deep hive bodies with one coat.

5 gallons of paint will cover approximately 250 deep hive bodies with one coat.

Description	Coverage Per Gallon	Application	Clean Up	Sheen	Item Number	Size	Price Each
Alkyd Gloss Oil Primer	Approx. 400 Sq Ft.	Brush or Spray	Mineral Spirits	Gloss	PT-882	5 gallon	\$105.95
					PT-880	1 gallon	\$ 21.95
Alkyd Gloss Oil Paint	Approx. 400 Sq Ft.	Brush, Roller or Spray	Mineral Spirits	Gloss	PT-862	5 gallon	\$109.95
					PT-860	1 gallon	\$ 23.95
Acrylic Latex Primer	Approx. 400-450 Sq Ft.	Brush or Spray	Water	Flat	PT-872	5 gallon	\$105.95
					PT-870	1 gallon	\$ 21.95
Acrylic Latex Paint	Approx. 400 Sq Ft.	Brush, Roller or Spray	Water	Flat	PT-852	5 gallon	\$105.95
					PT-850	1 gallon	\$ 21.95
Aluminum	Approx. 550 Sq Ft.	Brush or Spray	Mineral Spirits	Reflective Aluminum	PT-892	5 gallon	\$129.95
					PT-890	1 gallon	\$ 27.95
Quick Coat Acrylic Stain	Approx. 200-400 Sq Ft.	Brush, Pad, Roller, Spray	Water	Low Luster	PT-832	5 gallon	\$105.95
					PT-830	1 gallon	\$ 21.95
Quick Coat Natural Oil	Approx. 400-600 Sq Ft.	Brush, Pad or Spray	Mineral Spirits	Natural Finish	PT-842	5 gallon	\$105.95
					PT-840	1 gallon	\$ 21.95

Paint shipments into California are subject to state and local regulations. Call 800-880-7694 for details.

Standard Paint

Durable and Affordable!

Once you try this paint you won't go back to any other! Our 15 year Standard Latex Paint is perfect when you're trying to keep cost down. This paint goes on smoothly, resists blistering and has great coverage. For the best results, use the Quick Coat Acrylic Stain (PT-832, page 19) as your primer!

Purchase 180 gallons and the shipping is FREE!

- Goes on smoothly
- Blister resistant
- Rated as 15 year paint
- Excellent coverage

PT-825	Standard White Latex 5 Gallons	1 - 35 Pails.....	\$49.85
		36+ Pails.....	\$44.00
PT-826	Standard Beige Latex 5 Gallons	1 - 35 Pails.....	\$49.85
		36+ Pails.....	\$44.00
PT-827	Standard Gray Latex 5 Gallons	1 - 35 Pails.....	\$49.85
		36+ Pails.....	\$44.00



New!



Standard Latex Semi Gloss Paint

Same great qualities of our Standard Latex with a Semi Gloss finish.

Purchase 180 gallons and the shipping is FREE!

PT-828	Standard White Latex Semi Gloss 5 Gallons	1 - 35 Pails...	\$62.95
		36+ Pails.....	\$59.95

PROTECT AND PRESERVE YOUR WOODENWARE AND GET 4-5 TIMES THE LIFE OUT OF YOUR EQUIPMENT THAN IF LEFT UNTREATED!!

Perm-E8 8% Copper Napthenate

- Oil-based preservative and insect deterrent
- Mix ratio with mineral spirits: 1:6 hive bodies, 1:3 ground contact
- 5 gallons treats approx. 250 hives

55 gallon



See page 54

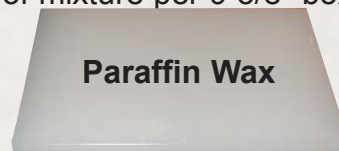
Ask about our assembled pre-treated equipment!



Paraffin Wax and Gum Rosin for dipping boxes.

- 3 parts paraffin to 1 part gum rosin
- Heat to 180°F - Dip for 5-15 minutes
- Used Equipment heat to 200-215°F
- Dip for 15-20 minutes

Approximately 1/4 - 1/2 lb. of mixture per 9 5/8" box.



Paraffin Wax

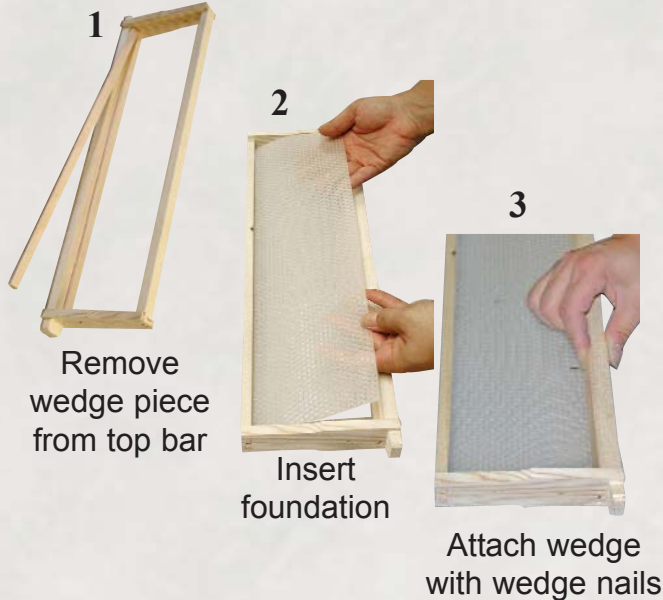
DC-605	Perm-E8 8% 5 gallons ..\$	169.95	HD-900	Paraffin Wax 100-499 lbs.....	\$1.75/lb.
	Ship wt. 50 lbs.			500+ lbs.....	CALL
DC-610	Perm-E8 8% 55 gallon....	\$1,348.75	HD-910	Gum Rosin 100-499lbs.....	\$1.79/lb.
				500+ lbs	CALL

Prices do not include shipping charges.

Comb Honey Equipment

Comb Honey Super Kit

Our assembled comb honey kit comes with the super and the frames fully assembled. All you need to do is insert the foundation. Easy as 1,2,3.



- 1 5 5/8" shallow super assembled
- 10 5 3/8" assembled frames (wedge top bar)
- 10 Thin Surplus 4 3/4" x 16 1/2" foundation sheets
- 1 Comb cutter
- 40 Clamshell boxes
- 1 Comb Honey Basics Booklet (Richard Taylor)
- 5/8" wedge nails

WW-750 Comb Honey Super Kit\$57.85
Ship wt. 12 lbs

Replacement Foundation For The Comb Honey Super Kit

Item Number	Size	Quantity Per Pack	Price Per Pack	Ship Weight
FN-165	4 3/4" x 16 3/4" Thin Surplus	10 Sheets	\$ 8.50	2 lbs.
FN-166	4 3/4" x 16 3/4" Thin Surplus	25 lbs/Approx 450 sheets	\$164.95	31 lbs.

Comb Honey Containers

Our two-piece, clear plastic cut comb boxes are ruggedly constructed and fully stackable! These are perfect for a good clear presentation and are an excellent choice for custom labeling. Tamper Proof Shrink Bands available on page 58.

- CN-219** Plastic Cut Comb Box, each Ship wt. 1 lb. per 5.....\$.79
CN-220 Plastic Cut Comb Box, case of 96 Ship wt. 19 lbs.....\$69.95



Clamshell Boxes

Our flexible Clamshell Boxes (4 1/2" x 4 1/4" x 1 1/2") are an economical way to package your comb honey and feature one-piece construction with a hinged lid. Tamper Proof Shrink Bands available on page 58.

- CN-450** Clamshell Box Each Ship wt. 1 lb.....\$.39
CN-455 Clamshell Box Case Of 600 Ship wt. 30 lbs.....\$179.95



See page 54

Comb Honey Equipment



Ross Round® Comb Honey

- With no corners to fill, it's easier to get a uniform product
- Utilizes 100% beeswax thin surplus for easy colony acceptance
- When sealed with a label, the package is leak-proof and stackable
- Makes 32 round sections per super

* The complete super comes fully assembled. Simply add the 3 7/8" foundation **FN-135** sold separately below.

Prices do not include shipping charges.

- CH-100** R.R. Complete Super *Ship wt. 17 lbs*.....\$ 86.95
CH-105 Conversion Kit *Ship wt. 12 lbs*.....\$ 64.95
CH-110 R.R. Visicheck Frames each *Ship wt. 2 lbs*.....\$ 3.35
CH-111 Case of 40 Visicheck Frames *Ship wt. 25 lbs*.....\$109.95
CH-120 Section Rings case 100 *Ship wt. 3 lbs*.....\$ 14.95
CH-121 Section Rings case 400 *Ship wt. 8 lbs*.....\$ 54.95
Note: Our Complete Kit and Conversion Kits include covers!
CH-130 R.R. Crystal Covers per 100 *Ship wt. 6 lbs*\$ 34.95
CH-131 Case of 400 Crystal Covers *Ship wt. 17 lbs*\$126.95
CH-135 R.R. Opaque Covers per 100 *Ship wt. 5 lbs*.....\$ 34.95
CH-136 Case of 400 Opaque Covers *Ship wt. 15 lbs*.....\$126.95
CH-340 Replacement Super Springs *Ship wt. 1 lb*.....\$.45
CH-150 R.R. Labels Roll of 100 yellow/black *Ship wt. 1 lb*....\$ 10.95
CH-155 R.R. Labels Roll of 100 green/yellow *Ship wt. 1 lb*....\$ 10.95



Labels sold separately.



CH-155

CH-150

Replacement Foundation For The Ross Round Kit				
Item Number	Size	Quantity Per Pack	Price Per Pack	Ship Weight
FN-135	3 7/8" x 16 1/2"	10 Sheets	\$ 8.50	2 lbs.
FN-136	3 7/8" x 16 1/2"	25 lbs/Approx 650 sheets	\$164.95	31 lbs.

Hogg Half Comb Honey Super Kit

- Modular, one-piece cassettes interlock
- No parts to assemble or components to handle
- Plastic embossed cells with beeswax coating
- Lid and label completes the package
- Makes 40 cassettes per super



Finished cassette.

- CH-300** Complete Half Comb Honey Super.....\$84.65
 (Super included.) *Ship wt. 14 lbs.*
Labels not included.
CH-330 Cassette Conversion Kit.....\$77.95
Labels not included. Ship wt. 10 lbs.
CH-310 Complete Refill (4 stacks of 10).....\$64.95
Labels not included. Ship wt. 9 lbs.
CH-320 Cassette Labels (Pack of 40).....\$ 7.95
Ship wt. 1 lb.



Conversion kit contains everything you need to build a cassette comb super except for the 4 3/4" super.

Instructional DVD included with each Complete Super or Conversion Kit!

Hive Accessories

Frame Wire

- Extra thin and strong 28-gauge carbon steel
- Use with eyelets and spur embedder
- Keeps foundation from sagging and stretching

HD-130 Frame Wire 1/2 lb. spool (approx. 700 ft.).....\$ 3.95

Ship wt. 1 lb.

HD-135 Frame Wire 1 lb. spool (approx. 1,400 ft.).....\$ 5.95

Ship wt. 2 lbs.

HD-140 Frame Wire 5 lb. spool (approx. 7,000 ft.).....\$23.00

Ship wt. 6 lbs.



Spur Embedder

- Tool used to push reinforcing wire into wax foundation.

HD-145 Spur Embedder *Ship wt. 1 lb.*\$8.95



Eyelets

Zinc eyelets are used in the small holes in the end bars to prevent reinforcing wire from gouging wood.



HD-185 Eyelets per 1000 *Ship wt. 1 lb..*\$3.95

HD-190 Eyelets per 100 *Ship wt. 1 lb..*\$1.25



Eyelet Punch

Unfinished metal tool used to install eyelets.



HD-180 Eyelet Punch *Ship wt. 1 lb.....*\$2.95

Support Pins

Used instead of wire to support foundation by inserting through holes in the end bars.



HD-175 Support Pins per 100 *Ship wt. 1 lb.....*\$ 4.95

HD-176 Support Pins per 1000 *Ship wt. 3 lbs*\$45.95



Frame Spacers

Metal spacers used to reduce the number of frames in your super from 10 down to 8 or 9 .

HD-250 nails not included .

WW-130 9 Frame Spacers 10 pack.....\$ 4.95

WW-140 9 Frame Spacers 100 pack.....\$39.50

WW-135 8 Frame Spacers 10 pack.....\$ 4.95

WW-145 8 Frame Spacers 100 pack.....\$39.50

Ship wt. 1 lb. per 10; 100 pack 9 lbs.

HD-250 5/8" x 19 Nails per pound..\$ 4.95

Ship wt. 2 lbs.



Metal Frame Rests

Used to protect the wood from damage caused by scraping and hive tool wear. Nails not included.



WW-120 Metal Frame Rests 10 pack\$ 2.95

WW-125 Metal Frame Rests 100 pack\$19.95

Ship wt. 2 lbs. per 10 pack.

Ship wt. 5 lbs. per 100 pack

Hive Accessories

Frame Savers



HD-645

- Repair broken frame ears
- 20-gauge galvanized steel
Nails included.

HD-645 Frame Savers each.....\$.19
Ship wt. 1 lb.

HD-647 Frame Savers Case of 500.....\$85.95
Ship wt. 35 lbs.

HD-271 2# Nails for Frame Savers.....\$ 7.95
Ship wt. 3 lbs.

Prices do not include shipping charges.

Pallet Clips



HD-648

16-gauge galvanized steel clips secure hive bodies to your pallet for transit.

- "W" clip has 1/2 inch space to separate hive bodies
- "U" clip holds hive bodies together without spacing

Ship wt. 10 = 2 lbs. Ship wt. Case of 250 = 44 lbs.



HD-649

HD-648 W Pallet Clips 1-99 Clips...\$.59 ea.
100 - 499....\$.49 ea.
500+.....\$.47 ea

HD-649 U Pallet Clips 1-99 Clips...\$.59 ea.
100 - 499....\$.49 ea.
500+.....\$.47 ea.

Hive Staples



Heavy-duty, 12 gauge copper staples allow you to fasten your hive bodies together for transit. *Approximately 125 Per Pound.*

HD-235 Hive Staples 1 lb. Box *Ship wt. 2 lbs.*.....\$ 4.75

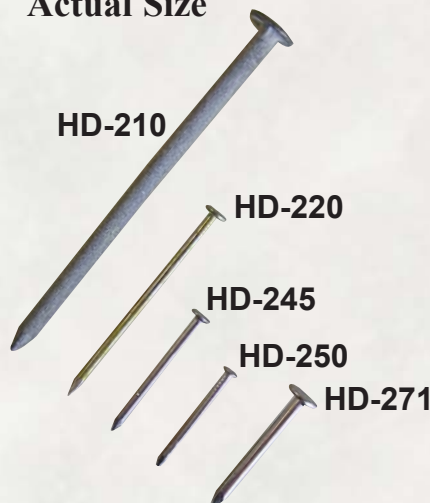
HD-240 Hive Staples 10 lb. Box *Ship wt. 11 lbs.*.....\$36.95

HD-242 Hive Staples 25 lb. Box *Ship wt. 27 lbs.*.....\$85.95

Specialty Nails

These cement and resin coated specialty nails are specifically designed with a small diameter to reduce splitting and cracking during assembly. *Ship wt. 2 lbs.*

Actual Size



HD-210 7D Nails Approx 200 per lb.....\$2.45/lb.
Used to assemble hive bodies and supers.

HD-220 1 1/4" Nails Approx 1,150 per lb.....\$3.55/lb.
Used to attach top bars and bottom bars to end bars.

HD-250 5/8" x 19 Nail Approx 3,900 per lb.....\$4.95/lb.
Used to attach the wedge back to the top bar or with frame spacers.

HD-245 3/4" Nail Approx 2,600 per lb.....\$4.85/lb.
Used to attach bottom bars to end bars or under the frame ear going from the end bar into the top bar.

HD-271 Frame Saver Nails Approx 2,000 per 2 lbs....\$7.95/2 lbs.
3/4" 15 wire. Used to attach Frame Savers.
Ship wt. 3 lbs.

Hand Tools

Handle Bar Hive Tool

- Ergonomically designed to help prevent hand cramping and carpal tunnel
- Multi-purpose leverage tool
Ship wt. 2 lbs.

HD-590 Handle Bar Hive Tool.....\$19.95

Frame Lifter And Scraper

- 10 1/2" tempered steel, multi-function tool
Ship wt. 1 lb.

HD-620 Frame Lifter And Scraper....\$11.95

10" Hive Tool

- Strong spring steel
- Large hook end for prying
Ship wt. 1 lb.

HD-588 10" Hive Tool 1-11.....\$ 4.50
12+.....\$ 3.95

7" Hive Tool

- Die-formed, high carbon tempered steel
Ship wt. 1 lb.

HD-570 7" Hive Tool.....\$ 9.95

3" Stiff Scraper

- ProGrip rubber handle
- Sharp, angled blade for scraping
Ship wt. 1 lb.

HD-615 3" Stiff Scraper 1-5.....\$ 5.95
6+.....\$ 5.35



Great for the hobby beekeeper!

HD-590

New!



HD-525

Plastic Pail Opener

- 8 1/2" long, fits right into your pocket
- Durable one piece construction
- Perfect for opening pails of honey or medications
Ship wt. 1 lb.

HD-525 Plastic Pail Opener....\$5.95



HD-615

Spur Embedder

- Fastens reinforcing wires into wax foundation
Ship wt. 1 lb.



HD-145

HD-145 Spur Embedder.....\$8.95

Frame Cleaner

- Metal crevice tool for cleaning tight areas in the frame
Ship wt. 1 lb.



HD-616

HD-616 Frame Cleaner.....\$5.95

HD-466



Stainless Steel Uncapping Scratcher

- Stainless steel
 - Curved fork tines for ease of use and durability
- Ship wt. 1 lb.*

HD-466 Stainless Steel Uncapping Scratcher...\$24.95

HD-465



Uncapping Scratcher

- All-purpose metal tool opens capped cells
- Ship wt. 1 lb.*

HD-465 Uncapping Scratcher.....\$ 9.95

HD-660



Bee Brush

- Soft bristles to gently remove bees from frames
- Ship wt. 1 lb.*

HD-660 Bee Brush.....\$ 3.95

Prices do not include shipping charges.

Frame Grip

- Heavy-duty
 - Grips top bar to examine frames with one hand
 - Spring release
- Ship wt. 2 lbs.*

HD-640 Frame Grip.....\$14.95



HD-640

Econo Frame Grip

- Affordable frame grip is economically priced
- Ship wt. 1 lb.*

HD-630 Econo Frame Grip.....\$ 8.95

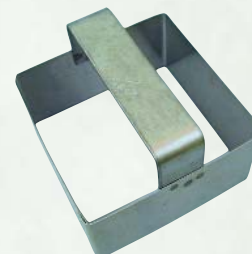
HD-630



Comb Cutter

- Stainless steel cuts 4 1/8" square section of comb honey
 - Cut comb boxes on page 58
- Ship wt. 1 lb.*

HD-177 Comb Cutter.....\$13.95



HD-177

HD-650



Stainless Steel Frame Perch

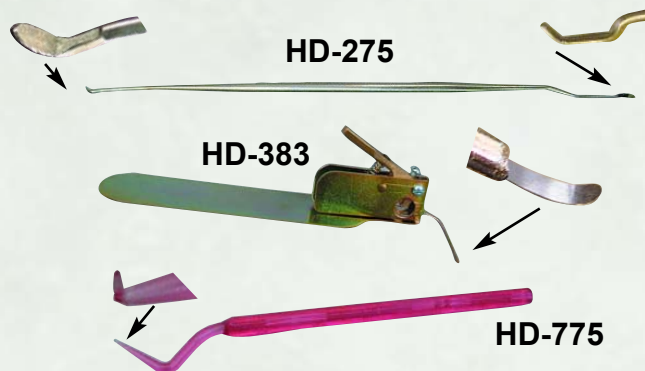
- Fits snugly over the edge of hive body to conveniently hold frames
- Ship wt. 1 lb.*

HD-650 Frame Perch\$18.95

Queen Rearing Supplies

Grafting Tools

- HD-275** Metal German Grafting Tool.....\$11.95
 - HD-383** Master Grafting Tool.....\$34.95
 - HD-390** Chinese Grafting Tool.....\$ 3.25
 - HD-775** JZ BZ Plastic Grafting Tool.....\$ 2.95
- Ship wt. 1 lb. each.*



Push In Queen Cell Cups



Various colors available.

Prepare banking bars by drilling 25/64" holes to accept each cell cup



Tip: While our cell cups have a textured interior for superior results, remember never to reuse cell cups as this can cut the acceptance rate by 50%.

Base Mount Queen Cell Cups



Various colors available.

Fits into grooved top bar or bottom bar



- HD-740** Push In Cell Cups per 100.....\$ 6.95
 - HD-741** Push In Cell Cups per 1000.....\$50.00
- Ship wt. per 100 1 lb.*
Ship wt. per 1000 3 lbs.

- HD-735** Base Mount Cell Cups per 100.....\$ 7.65
 - HD-736** Base Mount Cell Cups per 1000...\$57.50
- Ship wt. per 100 1 lb.*
Ship wt. per 1000 3 lbs.

Push In Cell Protectors

Can be pushed into place anywhere on drawn comb.

- HD-750** Push In Cell Protectors per 100....\$ 7.65
 - HD-751** Push In Cell Protectors per 1000..\$60.00
- Ship wt. per 100 1 lb.*
Ship wt. per 1000 3 lbs.



HD-750

Top Bar Cell Protectors

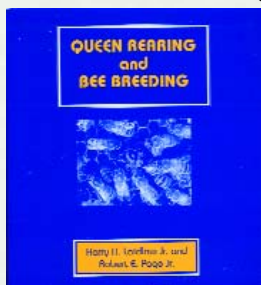
Hang between top bars of frames for easy insertion/retrieval.

- HD-745** Top Bar Cell Protectors per 100....\$ 7.65
 - HD-746** Top Bar Cell Protectors per 1000..\$60.00
- Ship wt. per 100 1 lb.*
Ship wt. per 1000 3 lbs.



HD-745

Queen Rearing & Bee Breeding



This book by Harry Laidlaw Jr. and Robert Page Jr. is written for beekeepers who know little about genetics and geneticists who know little about beekeeping. From the production of queen cells through selective breeding, this book covers a broad range of information. Soft cover, 224 pages. *Ship wt. 2 lbs.*

- BM-331** Queen Rearing & Bee Breeding Book.....\$25.00

Queen Rearing Supplies

Queen Cages



- The candy tube has more of an hour glass shape on the inside to better hold the candy in place
- The latch which holds the lid to the body of the cage has a much firmer closure
- The queen has been provided with a larger hiding place

HD-755 Queen Cage each.....\$.18
HD-756 Case of 100 cages.....\$15.00
Ship wt. 2 lbs. per 100 cages.

Queen Marking Pens

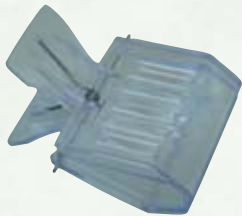
Mark your queen with the international color of the year.

International Color Chart: Year ending in 0 or 5; blue, 1 or 6; white, 2 or 7; yellow, 3 or 8; red, 4 or 9; green.

HD-372 White Marking Pen.....\$ 8.95
HD-373 Blue Marking Pen.....\$ 8.95
HD-378 Green Marking Pen.....\$ 8.95
HD-379 Yellow Marking Pen.....\$ 8.95
HD-380 Red Marking Pen.....\$ 8.95
HD-381 Set of 5 Queen Marking Pens...\$39.95
Ship wt. 1 lb. per 5 pens



Queen Catcher



- Clear plastic with spring action
- Worker-bee sized escape slats

HD-100 Queen Catcher.....\$8.95
Ship wt. 1 lb.

New!

Candy Caps With Hanging Strip



- Use with queen cage
- Keeps queens from emerging
- Use to ship queens in packages

Prices do not include shipping charges.

HD-760 Candy Caps w/Strip per 100....\$ 7.65
HD-761 Candy Caps w/Strip per 1000..\$60.00
Ship wt. per 100 1 lb.
Ship wt. per 1000 3 lbs.

Queen Marking Kit

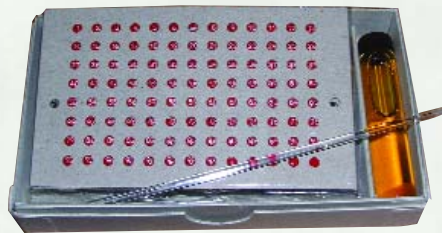
This kit includes 1 white marker for marking your queens for the 2006 season and a handy cage catcher for holding down the queen to mark her.

HD-382 Queen Marking Kit.....\$12.95
HD-387 Cage Queen Catcher.....\$ 7.95
Ship wt. 1 lb. each.



Queen Marking Numbers

- Mark up to 520 queens (5 different colors included)
- Adhesive included



HD-386 Queen Marking Number Kit..\$39.95
Ship wt. 1 lb. each.



Queen Marking Tube

Soft foam plunger allows you to mark queens gently.

HD-388 Queen Marking Tube.....\$6.95
Ship wt. 1 lb. each.

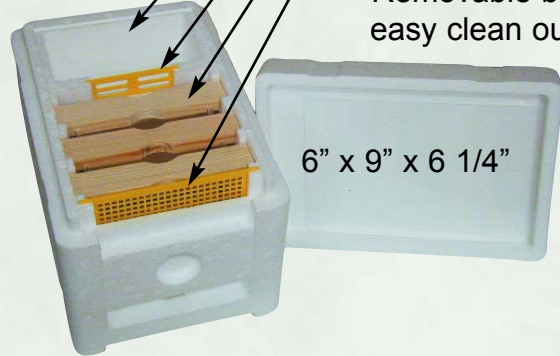


Queen Rearing Supplies

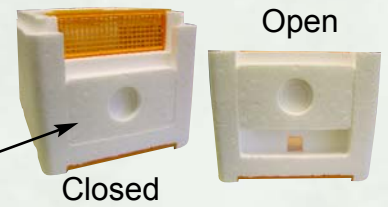
Styrofoam Mini-Mating Nuc

**As Low
As \$9.50**

- Built-in feeder
- Built-in excluder keeps queen out of the feeder
- Easy access frames
- Ventilation grid
- Entrance slides open and closed
- Removable bottom offers extra ventilation and easy clean out

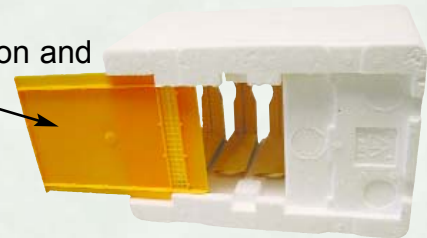


6" x 9" x 6 1/4"



Closed

Open



IN-140 Mini-Mating Nuc 1 - 4.....	\$15.95
5 - 99.....	\$14.95
100 - 249.....	\$13.95
250+.....	CALL
<i>Ship wt. 2 lbs. each.</i>	



*Shown with
optional 1 1/2"
cap plug*



1-4 Ship wt. 5 lbs. each.
5+ Ship OS-2.

See Page 54

Wax Coated Cardboard Nuc Boxes

These nuc boxes put the profit back in nuc sales! Ship nucs without box returns and frame exchanges. For a fraction of the cost of wood nucs or screened wood packages, you simply can't go wrong! Holds 5 - 9 1/8" frames.

- Wax impregnated for greater durability
- Lightweight, easy to handle
- Ships flat to save shipping charges
- Simple to assemble
- Makes nuc sales more cost effective than ever before
- Optional cap plug and banding straps

NB-200 Brown Nuc Box	1 - 25.....	\$5.45
	26 - 99	\$4.85
	100 - 249.....	\$4.25
	250+.....	\$3.95
NB-250 White Nuc Box	1 - 25.....	\$5.45
	26 - 99	\$4.85
	100 - 249.....	\$4.25
	250+.....	\$3.95

1 1/2" Cap Plug

When you are ready to transport your nucs, seal the entrance of your nuc box with this 1 1/2" cap plug.

Ship wt. 1 lb./10 caps



FD-147 1 1/2" Cap Plug.....	\$0.12
------------------------------------	--------

Riteway® Stapler

HD-280 Riteway® Stapler <i>Ship wt. 2 lbs.</i>	\$39.95
HD-281 1/2" Staples 5,000 ct. <i>Ship wt. 2 lbs.</i> ..\$	9.95

Nuc Straps

Our Poly Nuc Strap is designed to fit around your nuc box for secure handling. Each polypropylene strap features an adjustable ladder buckle and measures 3/4" x 60" so it is long enough to fit over a feeder pail as well. Our Rubber Nuc Strap is non-adjustable and fits snugly around the box and cover.

NB-400 Polypropylene Nuc Strap.....	\$0.69
NB-405 Rubber Nuc Strap (<i>not shown</i>).....	\$0.25

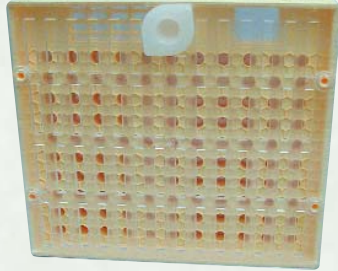


Ship wt. 1 lb. each.

Queen Rearing Supplies

Mann Lake Queen Rearing Kit

This system of queen raising is completely graft-less! With this kit, the queen lays her eggs in the cell cup, eliminating the painstaking step of grafting! This system allows you to raise up to 110 queens at one time. All components are reusable except brown cell cups. Reusing cell cups greatly diminishes the acceptance rate.



5 3/4" W x 5" H x 1" D

QC-100 COMPLETE KIT INCLUDES COMPONENTS TO PRODUCE 10 QUEENS:

- 1 Cell Grid
- 110 Brown Cell Cups
- 10 Hair Roller Cages
- 10 Brown Cell Fixtures
- 10 Yellow Cell Cup Holders
- 10 Candy Cup/Closure

QC-100 Complete Queen Rearing Kit *Ship wt. 2 lbs*..... \$ 69.95

QC-105 Cell Grid Only *Ship wt. 1 lb*..... \$ 49.95



QC-110 Brown Cell Cups 1000 ct. *Ship wt. 3 lbs*.....\$ 33.95

QC-111 Brown Cell Cups 110 ct. *Ship wt. 1 lb*.....\$ 5.95



QC-115 Hair Roller Cages 1000 ct. *Ship wt. 3 lbs*\$375.00

QC-116 Hair Roller Cages 10 ct. *Ship wt. 1 lb*.....\$ 5.95



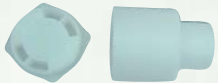
QC-120 Brown Cell Fixtures 1000 ct. *Ship wt. 3 lbs*.....\$336.00

QC-121 Brown Cell Fixtures 10 ct. *Ship wt. 1 lb*.....\$ 5.95



QC-125 Yellow Cell Cup Holders 1000 ct. *Ship wt. 3 lbs*.....\$336.00

QC-126 Yellow Cell Cup Holders 10 ct. *Ship wt. 1 lb*.....\$ 5.95



QC-130 Candy Cup & Closure 1000 ct. *Ship wt. 6 lbs*\$229.95

QC-131 Candy Cup & Closure 10 ct. *Ship wt. 2 lbs*\$ 5.95

(Fit onto the Hair Roller Cage)

Honeybee Development Time

	Egg	Larva	Pupa	Total Development Time
Queen	3 Days	5.5 Days	7.5 Days	16 Days
Worker	3 Days	6 Days	12 Days	21 Days
Drone	3 Days	6.5 Days	14.5 Days	24 Days



Bee Boost with QMP (Queen Mandibular Pheromone) *Prices do not include shipping charges.*

Improve Queen Rearing Success - Bee Boost (simulates an egg laying queen) used in queen mating nuclei in early spring can maintain significantly higher bee numbers than in non-treated nucs. Insert one Bee-Boost lure in each mating nuclei when it is established or when the queen cell is inserted.

Ship Queenless Packages - Bee Boost calms bees shipped in queenless packages. Place Bee Boost lure as if it were a queen cage.

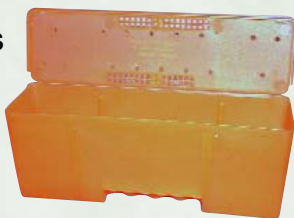
Temporary Queen Replacement - A hive will perform normally for several days with Bee Boost as a temporary queen. Remove the queen or queen cells and place a Bee Boost lure in each brood box. When a queen is available, the Bee Boost is removed and a new queen introduced.



DC-705 Bee Boost *Ship wt. 1 lb*.....\$19.95 per 10 pack

Queen Shippers

- Holds up to 20 JZ BZ Queen Cages
- Built-in compartment for candy and sponges
- Provides sturdy transportation



Battery Box

- HD-765** Battery Boxes each\$ 1.75
- HD-766** Battery Boxes Case 96...\$145.00
- Ship wt. 30 lbs. per 96.*

For Use With Wooden Cages

RW-100 Small Riteway® Western & Eastern Queen Shipper
Designed to hold up to 56 wooden queen cages, either Western or Eastern Type (W.T. Kelley Style). *Ship wt. 1 lb. each.*

- Queen Shipper 1 - 49.....\$9.25 each
- 50 - 74\$8.95 each
- 75 - 99.....\$8.70 each
- 100+\$8.25 each

RW-300 Large Riteway® Western & Eastern Queen Shipper
Designed to hold up to 104 wooden queen cages, either Western or Eastern Type (W.T. Kelley Style). *Ship wt. 2 lbs. each.*

- Queen Shipper 1 - 49.....\$9.95 each
- 50 - 74.....\$9.75 each
- 75 - 99.....\$9.50 each
- 100+\$9.25 each



For Use With Plastic JZ BZ Queen Cages

RW-400 Small Riteway® JZ-BZ Queen Shipper
Designed to hold up to 88 plastic JZ-BZ queen cages.
1/2 size JZ-BZ Shipping Bars required. *Ship wt. 1 lb. each.*

- Queen Shipper 1 - 49.....\$9.25 each
- 50 - 74.....\$8.95 each
- 75 - 99.....\$8.70 each
- 100+\$8.25 each

RW-500 Large Riteway® JZ-BZ Queen Shipper
Designed to hold up to 184 plastic JZ-BZ queen cages.
Full size JZ-BZ shipping bars required. *Ship wt. 2 lbs. each.*

- Queen Shipper 1 - 49.....\$9.95 each
- 50 - 74.....\$9.75 each
- 75 - 99.....\$9.50 each
- 100+\$9.25 each

Riteway® Shippers Are Approved For Shipping Queens And Packaged Bees Via UPS Air.



JZ-BZ Shipping Bars For Use With Riteway® Shippers

These shipping bars make queen banking and shipping both quick and economical.

Ship wt. per 100 15 lbs.

- HD-772** 1/2 Size JZ-BZ Shipping Bars\$ 1.10
- HD-770** Full Size JZ-BZ Shipping Bars.....\$ 1.40
- HD-771** Full Size JZ-BZ Shipping Bars 100 ct.....\$110.00

Riteway® Stapler (pictured on page 29)

- HD-280** Riteway® Stapler *Ship wt. 2 lbs.*.....\$39.95
- HD-281** 1/2" Staples box of 5,000 *Ship wt. 2 lbs.* \$ 9.95

Full Size Shipping Bars



1/2 Size Shipping Bars

Bee Yard Accessories

Solar Fencer

Keep the marauding creatures out of your bee yard with a Red Snap'r® Solar Fencer! This unit comes with a pre-charged battery that will last up to 7 days without sunshine! Normal daylight conditions power this electric fence throughout the summer months and it can handle up to 10 miles of fencing! *Ship wt. 14 lbs.*

HD-360 Red Snap'r Solar Fencer.....\$159.95



HD-363



HD-361

HD-360



Replacement Battery

Replace your worn out Solar Fencer battery with this recharged battery! It's all ready to go! *Ship wt. 6 lbs.*

HD-361 Gel Battery.....\$25.95

Fence Tester

This simple to operate voltage tester specifies the output of a fencer or tests the voltage on existing fence lines. Reads from 600-7,000 volts. *Ship wt. 2 lbs.*

HD-363 Fence Tester.....\$16.95



HD-362

Crittler Gitter

Mount a Crittler Gitter in your apiary to repel prowling animals! This battery operated motion detector emits loud noises and flashes red "eyes" when any movement is detected! High and low volume settings make this an option for bee yards that are close to the house or near neighbors. 90 degree radius and 50 feet of depth. Battery included. *Ship wt. 1 lb.*

Prices do not include shipping charges.

HD-362 Crittler Gitter.....\$49.95

Swarm Trap

Give a swarming colony an ideal "home"! When used in conjunction with a swarm lure, swarming honeybees find our Swarm Traps irresistible! Our Swarm Traps are constructed of a molded fiber material that will hold up through many swarm seasons, mimicking the hollow of a tree, which is a favorite home of swarms. **Swarm Lure sold separately.**

HD-375 Swarm Traps 1-4.....\$15.95
 5-9.....\$14.95
 10-49.....\$13.95
 50+.....\$12.95



See page 54

HD-375

1 Ship wt. 6 lbs., 2-4 Ship wt. 30 lbs. oversized.

Swarm Lure

Our Swarm Lure emits a slow-release blend of pheromones that attract the swarm and entices the scout bees to declare the Swarm Trap a suitable new home! Use one packet per trap. *Ship wt. 1 lb.*



HD-376 Swarm Lure.....\$3.50

HD-376

Smokers

Stainless Steel Smokers

- Best value in the industry
- Heavy duty stainless steel construction
- Easy open lid tab
- Heavy duty hinge
- Lower bracket placement for burn-free fingers

HD-540 4" x 10" With Guard Ship wt. 4 lbs.....\$32.95

HD-555 4" x 7" With Guard Ship wt. 3 lbs.....\$31.95

HD-560 4" x 7" No Guard Ship wt. 3 lbs.....\$26.50

Mann Lake Smokers are the highest quality smokers available! Our stainless steel construction is complimented by a top quality bellows. Smokers are 4 inches in diameter.

Reinforced Hinge



All smokers come with a FREE SAMPLE of our KwikStart Smoker Pellets!



Stainless Dome Top W/Guard

- Sturdy stainless steel construction
- Replaceable Pro-Bellow



HD-565 4" x 7" Dome Top Smoker.....\$29.95
Ship wt. 3 lbs.

Pro-Bellow

Professional grade bellows interchangeable with all industry standard bolt patterns.

- Easy to pump!
- More air flow!
- Fits all smokers!

HD-575 Pro-Bellow Ship wt. 1 lb.....\$9.95

HD-576 Replacement Bellow Skin Ship wt. 1 lb...\$2.95



Smokers & Smoker Fuel

Tip: The cotton fuel is great for quick trips or for a few colonies. Think of the wood pellets as 'logs' to the fire. They can't be beat for extended burn time.

Smoker Fuel



Ship wt. 1 lb. each.

- Cotton fibers/cottonseed husk
- Clean burning
- Easily started

HD-550 Smoker Fuel 1 - 4\$1.95
5+.....\$1.60

Wood Pellet Smoker Fuel

- Compressed wood pellets burn clean

HD-552 5 lbs. Wood Pellet Smoker Fuel.....\$2.95
Ship wt. 6 lbs. each.

HD-553 40 lbs. Wood Pellet Smoker Fuel...\$5.95
Ship wt. 42 lbs. each.



Prices do not include shipping charges.

Electric Bee Blower



Powerful 5.5 amp, 100 volt variable speed bee blower has a "lock on" feature for continuous operation. Tool speed is controlled by the pressure placed on the trigger and varies from 1 - 16,000 RPM. Compact and lightweight.
Ship wt. 5 lbs.

HD-285 Electric Bee Blower.....\$265.00

Electric Bee Blower Accessories

HD-295 10' Replacement Kit.....\$35.95
Includes 10' Standard hose, 1 standard cuff and 1 nozzle.

HD-296 Standard Hose.....\$ 2.99/ft.

HD-297 Crush Proof Hose\$ 4.95/ft.

HD-298 Standard Cuff.....\$ 9.95

HD-299 Crush Proof Cuff.....\$ 9.95

HD-300 Blower Nozzle.....\$ 8.95

Ship wt. 1 lb. each

HD-298



HD-296



HD-295



HD-297

HD-299



HD-300

New!

A smoke fluid is pumped through a propane or butane heated coil, which causes it to vaporize. This creates a simulated smoke plume that is highly effective for beekeeping.



HD-538

HD-535 Propane Smoker.....\$179.00
Ship wt. 4 lbs.

HD-538 Butane Smoker.....\$179.00
Ship wt. 4 lbs.

HD-536 EO Smoker Fluid Quart.....\$ 16.95
Ship wt. 5 lbs.

HD-537 EO Smoker Fluid Gallon.....\$ 65.00
Ship wt. 10 lbs.

KwikStart Smoker Pellet



KwikStart Smoker Pellets are easily lit!



KwikStart Smoker Pellets have got to be seen to be believed! Simply light with a flame, blow it out and watch the smoke roll (if using to start your other smoker fuel, leave the flame going for fast fire starting action)! These can be used alone for checking a hive or two or used as a starter for any other smoker fuel. Takes the work out of starting your smoker! Ship wt. 1 lb.

HD-554 KwikStart Pellets 100 ct. 1 - 4\$7.95
5+\$7.50

Feeding Equipment

Mann Lake has the highest quality frame feeders on the market today! Our durable Pro-Feeders® have been designed to give years of service with the least possible maintenance.

9 1/8" Pro-Feeder®



Ship wt. 2 lbs. each.
Box of 40 feeders 66 lbs.

Mann Lake's Pro-Feeder® is 7 times better!

- 22% more capacity
- Holds over a gallon of syrup
- Takes the place of one frame in the brood chamber
- Interior walls are extra rough for bee mobility
- Rain shields prevent water buildup
- Extra heavy walls hold shape better
- Heavy duty ears mean less breakage

Tip: We recommend inserting some sort of floating device like a frame bottom bar or stick in order to give the bees something to groom on while feeding.

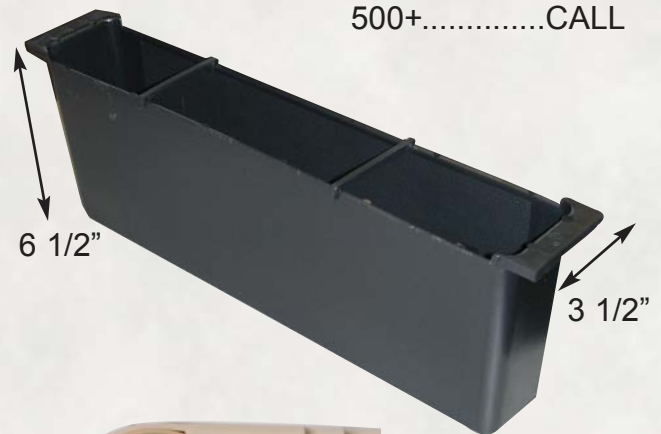
FD-105 Mann Lake Pro-Feeder® 1 - 9.....	\$4.55
10 - 24.....	\$3.55
25 - 299.....	\$2.99
300 - 499.....	\$2.85
500+.....	CALL

Medium 6 5/8" Frame Feeders

- Holds over a gallon of syrup
- Takes the place of two frames
- Smooth walls make a float essential

FD-107 6 5/8" Frame Feeder 1 - 499\$4.55
500+CALL

Ship wt. 2 lbs. each.



Boardman Entrance Feeder

This feeder allows you to use your own Mason type jar or 5# round jar for feeding at the entrance of your hive. This feeder is not recommended for cold weather feeding. Glass jar not included. Ship wt. 1 lb. each.

FD-100 Boardman Entrance Feeder.....\$2.95



Feeding Equipment

Mann Lake Top Feeder

The new Mann Lake Top Feeder comes completely assembled and ready to use. Holds up to 4 gallons of syrup and features a galvanized steel safety screen to prevent drowning of bees! This feeder is constructed of a heavy-duty, single piece plastic to provide a no-leak reservoir! Wooden surround measures 4 1/2" x 19 5/8" and fits all standard 10 frame equipment. There is no comparison to the strength and durability this feeder provides over foam top-feeders.



Top Feeder Insert*

FD-109 Top Feeder Insert 1 - 9.....\$11.95
 10 - 24.....\$10.95
 25 - 299.....\$10.55
 300+.....CALL
 Ship wt. 3 lbs. each.

Top Feeder With 4 3/4" Super

FD-110 Top Feeder With Super 1 - 9.....\$17.95
 10 - 24\$17.50
 25 - 299\$15.50
 300+.....CALL
 Ship wt. 7 lbs. each.

*Some assembly required on Top Feeder Insert, screen and hardware included.

1 1/2" Cap Plug

1 1/2" Cap Plug is perfect for your feeder pails or closing the entrance of our cardboard nuc boxes. *Ship wt. 1 lb.*



FD-147 1 1/2" Cap Plug..\$.12

Honey And Syrup Storage Tank

- Polyethylene with a wire cage
- Holds 275 gallons (3,175 lbs. of syrup)
- 2" outlet with petcock for easy operation
- Mounted on a pallet for quick and easy handling

CN-500 Honey Storage Tank\$295.00
 Ship wt. 170 lbs
 L 48" x W 39 3/4" x H 46"



See page 54

Our Honey Storage Tank is great for storing honey or High Fructose Corn Syrup!

Prices do not include shipping charges.

High Fructose Corn Syrup

Available For Delivery In The US And Canada!

Type 55 and Type 42 in full or half loads delivered nationwide. Convenient pickup locations are also available. Call us for the most competitive price guaranteed!

Pro-Sweet 50, Liquid Sugar Blend & Ø Sucrose are available in the Midwest!



Bee-Pro® Pollen Substitute

BEE-PRO® IS THE CLOSEST FORMULATION TO NATURAL POLLEN AVAILABLE ON THE MARKET TODAY! SUPPORTED BY EXTENSIVE RESEARCH IN HONEYBEE NUTRITIONAL REQUIREMENTS.

Building strong and healthy brood is essential to the success of every beekeeper.



- ✓ **BEE-PRO®** gives your bees the best nutrients available for the production of larval food.
- ✓ **BEE-PRO®** is a high protein pollen substitute which supplies the lipids, minerals, and B-complex vitamins honeybees need to produce larval food.
- ✓ **BEE-PRO®** is specially formulated for the commercial beekeeper feeding syrup as the source of carbohydrates in the bee's diet.
- ✓ **BEE-PRO®** can be fed in dry form in a feeder box placed in the yard or made into patties by mixing with high fructose corn syrup or sugar syrup and placed in the hive.
- ✓ **BEE-PRO®** is free of all contaminants. Natural pollens may contain pesticide residue and disease carrying bacteria (foulbrood.)
- ✓ **BEE-PRO®** can be used for building colonies in late winter or early spring, to prepare for pollination and to maintain or increase brood production prior to and after honey flow.

Dry Feeding:

BEE-PRO® can be fed in dry form when the weather is warm and the bees can fly. **BEE-PRO®** should be placed in a box or a shallow super with a bottom. A few pieces of wood or other objects should be placed on the top of **BEE-PRO®** to provide a place for the bees to groom. This box should be placed in an open top barrel placed on its side which will protect **BEE-PRO®** from wind, rain and dew. **BEE-PRO®** is a great help in the spring when bees are kept near cattle feed lots; the bees will feed on **BEE-PRO®** before they will rob cattle feed.



Feeding Patties Or Soft Cakes:

When the weather is too cold for bees to fly, **BEE-PRO®** should be fed in patty form. Patties can be made by mixing dry **BEE-PRO®** with high fructose corn syrup or sugar syrup to make a wet patty (or purchase our **BEE-PRO® Patties** on page 38). Allow mixture to stand overnight so liquid can penetrate the dry ingredients. Too much syrup will cause patty to run down frames. Feed approximately one half to three quarters of a pound dry per colony.



FD-203	BEE-PRO®	1 lb. canister	Ship wt. 2 lbs.....	\$ 5.95
FD-200	BEE-PRO®	10 lb. pail	Ship wt. 12 lbs.....	\$19.95
FD-201	BEE-PRO®	50 lb. bag	1 - 10 bags	\$49.95
			11 - 20 bags.....	\$47.95
			21 - 39 bags.....	\$44.95
			40+ bags.....	\$39.65
			Ship wt. 53 lbs.	

BEE-PRO® is also available for pickup in California; please call for locations and pricing!

Bee-Pro® Patties



1. Cut a V-shape in paper.



2. Pull back cut V-shape and tear off triangular paper.

Tip: BEE-PRO® Patty can help gauge queen viability.

"I started chasing bee swarms in 1963, and from 1963 to 1993 I thought I knew how to take care of bees. But from 1993 to now, I am a rookie. I have tried different products over the years, to bring the bees health up, because of the mites. Your Bee-Pro Patties hit the spot. Some of the bees are on their second patty and really looking good. I want to thank you for a good product. It was money well spent." Thanks again, Harold Dill, Colorado

Using A BEE-PRO® Patty With One Brood Chamber: Place the BEE-PRO® Patty face down.

Using A BEE-PRO® Patty With Two Brood Chamber: Place the BEE-PRO® Patty between brood chambers face up.

- Ready to feed
- No mixing, no mess
- Convenient
- Balanced Nutrition
- Not weather dependent
- Early brood production
- Increased bee populations

Tip: Store extra BEE-PRO® Patties in freezer.



The benefits of feeding pollen patties are undisputed. If you've ever tried to make them yourself, you know what a messy job it can be! Now feeding BEE-PRO® Patties couldn't be more convenient! Simply cut slits into the paper coating and place between the brood chambers.

When natural pollen begins to flow, the presence of the BEE-PRO® Patty will stimulate the gathering of pollen during the day. At night, the bees will continue to feed on the BEE-PRO® Patty.

Your bees can begin to generate brood weeks (or even months) prior to natural pollen flows using BEE-PRO® Patties. One of the great advantages of internal hive feeding is that you are not dependent on weather conditions for foragers to bring nutrients into the hive! Brood rearing can take place through weeks of rain!



1 Pound Pre-Formed BEE-PRO® Patties

FD-320 BEE-PRO® Patties 10 pack Ship wt. 12 lbs...\$19.95 per pack

FD-300 BEE-PRO® Patties 40 pack 1-10 cases\$48.60 per case

11-19 cases\$46.05 per case

20-29 cases\$43.75 per case

30-39 cases\$41.55 per case

40+ casesCALL

Ship wt. 49 lbs. per case.

BEE-PRO® Patties are also available for pickup in California; please call for locations and pricing!

BEE-PRO® patties give your hive what they need to produce more brood sooner in the spring and later into the fall!

Prices do not include shipping charges.

E-Mail: beekeeper@mannlakeltd.com

Website: mannlakeltd.com

Varroa & Small Hive Beetle Control



Varroa Treatment

- Treatment is most effective when brood rearing is lowest
- Treat all infested colonies within the yard
- Use 1 strip for every 5 frames of bees
- Remove strips after 42-45 days

CheckMite+™ 10 pack

DC-810 1-10 10 packs.....\$ 29.95 each
 11+ 10 packs.....CALL FOR PRICE
Ship wt. 1 lb. each.

CheckMite+™ 100 packs

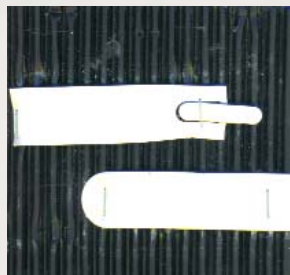
DC-800 1-9 100 packs...\$185.95
 10-19 100 packs...\$182.95
 20+ 100 packs CALL FOR PRICE
Ship wt. 4 lbs. each.

Small Hive Beetle Treatment

- Use a ground drench in addition to CheckMite+™
- Use 1 strip cut in 1/2 then attached to a 5" x 5" corrugated square as shown below
- Remove strips after 42-45 days

Non-Medicated 5" x 5" Plastic Squares

For use in application with CheckMite+™ in treating Small Hive Beetles. *Ship wt. approx. 35 Plastic Squares per lb.*



*Photo by Stephen Ausmus
 ARS/USDA*

DC-815 1-499 qty.....\$.35 each
 500+ qty\$.29 each

It is important to use a ground drench when treating for the small hive beetle. See GardStar® on page 41.

CheckMite™ is approved for use in most states. Prior to ordering please check with your local Department of Agriculture or phone Mann Lake Ltd. at 800-880-7694 to determine the status of the Section 18 in your state.

*Secure online ordering any
 time of day at
www.mannlakeltd.com*

Varroa Treatments

Medication Kit



Our Medication Kit contains three medications you need to keep your bees healthy;

- 1 ten pack CheckMite+™ Strips (Varroa Mites)
- 1 ten pack Mite-A-Thol® Menthol (Tracheal Mites)
- 1 Terra-Patties® Mix, makes 10 patties (Foulbrood)

DC-700 Medication Kit Ship wt. 7 lbs.....\$64.25

CheckMite+™ is approved for use in most states. Prior to ordering please check with your local Department of Agriculture or phone Mann Lake Ltd. at 800-880-7694 to determine the status of the Section 18 in your state.



Sucroicide

Sucroicide is for the organic beekeeper. Sucroicide is a Sucrose Octanoate sugar ester (derived from sugar) and vegetable oil (derived from fatty acids) that can be up to 97% effective against the varroa mite. This product must be sprayed on both sides of each and every frame 3 times at 7-10 day intervals. One pint of Sucroicide concentrate will treat approximately 29 - 2 story colonies 3 times when mixed according to package directions. Makes 20 gallons.

DC-640 Sucroicide Ship wt. 2 lbs.....\$19.95

Prices do not include shipping charges.

Api Life Var®

An alternative product for Varroa treatment. It has a top-end efficacy of only 75% and requires a temperature range of 65-85 degrees. Three applications are necessary at 7-10 day intervals. This is not considered a control but a way to manage mite loads below the economic threshold. When treating according to label instructions using 3 wafers per colony, the 10 pack will treat approximately 6 colonies and the 100 pack will treat approximately 66 colonies. Prior to ordering, check with your Department of Agriculture or phone Mann Lake Ltd. to determine the status of the Section 18 in your state.

10 pack ship wt. 1 lb.

100 pack ship wt. 8 lbs.

DC-675 Api Var Life® 10 Pack (Contains 20 wafers)\$ 33.95

DC-670 Api Var Life® 100 Pack (Contains 200 wafers) 1-5 packs \$235.95
 6+ packs \$233.95

Apistan® Strips



Apistan® is used for detecting and controlling Varroa Mites in bee colonies. Effective control may be achieved by treating hives in the spring before the first honey flow and in the fall after the last honey flow. 1 strip for every 5 frames of bees is recommended.

DC-665 10 packs 1-5\$ 26.95
 6-99.....CALL
 Ship wt. 1 lb. each

DC-650 100 packs 1-5\$185.95
 6-19.....CALL
 Ship wt. 3 lbs. each.



Treatment Aids



GardStar®

GardStar® is a ground drench (DO NOT USE INSIDE HIVE) used to control small hive beetle larvae which pupate in the ground around the hive openings. USDA tests in Florida and Georgia have shown that GardStar® is over 90% effective at killing small hive beetle larvae and fire ants. Each 4 oz. bottle makes 23 gallons and one gallon will treat approximately 6 hives. Sprinkle 18-24 inches out in front of hive entrances. Treatments last 2-4 months, depending on rainfall. If treating in an area where hives are already present, use a watering can to avoid any over-spray from contaminating the hives. GardStar® Quart makes 189 gallons. One quart will treat 1134 hives.

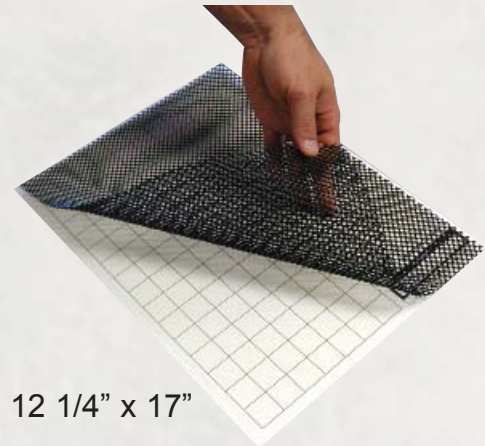
- DC-825** GardStar® 4 oz. Bottle *Ship wt. 1 lb. ea.*.....\$ 25.95
DC-830 GardStar® Quart Bottle *Ship wt. 3 lbs. ea.*.....\$111.95

Sticky Board

This sticky board can be used with or without the screen to monitor or diagnose a varroa infestation. If placed directly on the bottom board, the screen will be needed to keep the bees from the adhesive. When used in conjunction with a screened bottom board, the replacement sticky board can be used alone. The sticky board is conveniently printed with the grid lines to aid in determining the number of mites present.

Ship wt. 1 lb.

- DC-680** Sticky Board With Screen.....\$4.95
DC-681 Replacement Sticky.....\$2.85



12 1/4" x 17"

Chemical Resistant Gloves - Disposable

These flexible, non-latex "surgical-type" gloves are great when a lot of dexterity is desired. Made of 100% nitrile, these gloves provide at least three times the puncture resistance of latex or vinyl gloves of comparable thickness!

Ship wt. 1 lb. each pair.

- RL-122** Large Glove Size 8-9.....\$1.50
RL-123 X-Large Glove Size 9-10.....\$1.50



Heavy-Duty Chemical Resistant Gloves

This flexible, fully coated neoprene glove will hold up to years of abuse and is washable! Durable and abrasion resistant, these gloves are nearly as flexible as an unsupported glove! Two-piece interlock liner enhances glove flexibility and integrity, while the textured exterior provides an excellent "wet grip"!

Ship wt. 1 lb. each pair.

- RL-120** Medium.....\$7.95
RL-121 X-Large.....\$7.95

Tracheal Mite & Nosema Control

Tracheal Mite control up to 97% efficacy.

Safest Most Effective Tracheal Mite Control Available!

Mite-A-Thol®

Mite-A-Thol® Menthol is still the safest and easiest way to treat for tracheal mites! Apply one packet per hive on the top bars of the upper corner of the brood box and leave for a minimum of 28 days for maximum results. Treat for tracheal mites both spring and fall. Remove menthol 30 days before the honey flow begins.

Bulk Mite-A-Thol® is a free flow pelletized 99% pure menthol requiring packaging prior to treating hive. Each 55 lb. box will treat approximately 488 colonies. Mesh bags also available. Directions for application are included. *Ship wt. 60 lbs. per box.*



NOTE: Store Menthol in cool area, ideally in the freezer in a sealed container.

- DC-215 Mite-A-Thol® per lb.....\$ 16.60
- DC-220 55 lb. box 1 - 3 boxes.....\$ 750.00
- 4+ boxes.....\$ 735.00

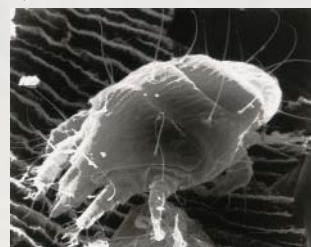
Mesh Bags

- CN-610 Mesh Bags per bag.....\$ 0.10
- Mesh Bags per 3,000\$240.00

Mite-A-Thol® is pre-packaged in individual 50 gram packets (1.8 oz. or 1/3 cup) ready to use. No packaging or measuring to do. Directions included. Available in 10 pack and 500 pack boxes. *Ship wt. 2 lbs. per 10 pack, 64 lbs. per 500 pack.*

- DC-250 Mite-A-Thol® 10 packs 1 - 19.....\$ 25.95
- 20+.....\$ 24.95
- DC-255 Mite-A-Thol® 500 pack case 1 - 3...\$985.00
- 4+.....\$935.00

See page 47 for disease information.



*Tracheal Mite
Photo by William E. Styer
ARS/USDA*

Fumagilin®-B

In response to the shortage of Fumidil®-B, Mann Lake has secured permission from the FDA Center for Veterinary Medicine to make Fumagilin®-B available in the USA. Fumagilin®-B is the only product registered in Canada for the treatment of Nosema in honeybee colonies.

The soluble Nosema solution!

University studies show Fumagilin®-B is 15 times more soluble than Fumidil®-B.

Easy to Mix.

Dissolves without heating and mixes directly into syrup. Easy mixing means you can feel confident your bees are getting the right dosage every time.

No Residue in Honey.

When used as directed.

Cost Effective.

Reduces expensive colony replacement and results in more productive colonies.

- DC-105 Fumagilin®-B .5 grams.....\$14.95
Makes 5 gal. *Ship wt. 1 lb. each.*
- DC-110 Fumagilin®-B 2.0 grams....\$36.95
Makes 20 gal. *Ship wt. 1 lb. each.*

Prices do not include shipping charges.



Dare To Compare!

Fumagilin®-B combats **Nosema**, a debilitating disease of adult honey bees worldwide. The active ingredient in Fumagilin®-B is fumagillin, **the only compound completely effective against Nosema.**

- DC-115 Fumagilin®-B 9.5 Gram Bottle Makes 95-100 gal.
- 1 - 5 bottles.....\$109.95
- 6 - 11 bottles.....\$107.95
- 12+ bottles.....CALL
- Ship wt. 2 lbs. each.*

Foulbrood Control

New!



Tylan® Soluble

FDA APPROVES TYLAN SOLUBLE FOR THE CONTROL OF AMERICAN FOULBROOD IN HONEY BEES

An October 20 CVM update stated “FDA reviewed extensive data to ensure the product met all necessary effectiveness, animal health, human food safety, and environmental standards.” It also said “FDA has concluded that the honey derived from honey bees fed tylosin tartate is safe when the animals are fed according to the approved labeling.”

Mix 200 mg tylosin in 20 g of confectioners/powdered sugar. Use immediately. Honey Bee colonies should receive three treatments administered as a dust in confectioners/powdered sugar. The 200 mg dose is applied (dusted) over the top bars of the brood chamber once weekly for 3 weeks.

Use chemical resistant gloves (page 68) when mixing or applying Tylan®. *Ship wt. 1 lb.*

Tylan® Soluble Powder 100 gram 1 - 11.....	\$37.99
12 - 24.....	\$34.95
25+.....	CALL

TERRA-PRO

TERRA-PRO is a medicated feed mix which contains Terramycin™, Bee-Pro®, sucrose and other vitamins and minerals. It is recommended as an aid in the prevention and treatment of American and European Foulbrood. TERRA-PRO should be fed early in the spring and fall and should be consumed by the bees before main honey flow begins.

For spring treatment, use 2 level tablespoons (approx. 200 mgs) of TERRA-PRO mix around the edges and ends of brood frames and top bars of the brood chamber. Fall treatment consists of 2 level tablespoons of TERRA-PRO around the hole of the inner cover of the hive. Three applications at 4 - 5 day intervals in spring and fall are needed. *1 lb. and 10 lb. canisters come with a convenient measuring spoon.*



DC-550 TERRA-PRO 1 lb.....\$ 4.95
24 Treatments *Ship wt. 2 lbs.*

DC-560 TERRA-PRO 10 lb.....\$15.95
240 Treatments *Ship wt. 14 lbs.*

DC-570 TERRA-PRO 40 lb. Bucket
960 Treatments *Ship wt. 46 lbs.*
1 - 4 buckets.....\$55.95
5 - 10 buckets.....\$52.95
11 - 36 buckets.....\$49.95
37+.....CALL

Foulbrood Control

TERRA-PATTIES®



Approximately 120 - 6
oz. patties per pail.

Ready To Feed!!



10 patty pail

DC-500 TERRA-PATTIES® 45 Lb. Pail

1 - 4 pails\$79.95
5 - 10 pails\$72.95
11 - 15 pails.....\$65.95
16+CALL
Ship wt. 50 lbs.

DC-520 TERRA-PATTIES® 10 Pack Pail....\$10.95

Ship wt. 5 lbs.

DC-510 Scoop Ship wt. 2 lbs.....\$10.95 (not shown)

HD-525 Plastic Pail Opener Ship wt. 1 lb....\$ 5.95 (not shown)

**FREE SCOOP WITH PURCHASE OF 5 OR MORE
PAILS. ONE FREE SCOOP PER ORDER.**

Prices do not include shipping charges.



Terramycin™ 100MR

This is a highly concentrated Terramycin™ product that uses dextrose as a carrier. Used for the treatment and prevention of American and European Foulbrood. When mixed with sugar, one 50 lb. bag of TM100MR will treat 8,000 colonies with 3 - 1 oz. dustings of mixture in the spring or 5,333 colonies with 3 - 1.5 oz. dustings of mixture in the fall. Mix 1 lb. TM100MR to 29 lbs. of sugar.

DC-102 Terramycin™ 100MR 50 lb. bag Ship wt. 54 lbs.....\$465.95

WHY SHOULD YOU USE TERRA-PATTIES®?

1. The most effective way to control foulbrood.
2. Assures proper dosage of Terramycin™.
3. Prevents sub-lethal dose of Terramycin™.
4. Prevents rapid degradation of Terramycin™ over other types of application, i.e. dustings or in syrup.
5. Made with proper Terramycin™ registered for bees.
6. Research has shown that Terramycin™ in TERRA-PATTIES® stays at full strength for up to 6 months.
7. Patties should be applied as early as possible before a pollen or nectar flow. Best consumption attained when an alternate feed source is not present. Remove 14 days prior to honey flow.
8. TERRA-PATTIES® can be applied in fall for overwintered colonies or early spring.

Tip: Store extra TERRA PATTIES® in freezer.



Ropiness test for AFB

Honey Robber®

Honey Robber®



See page 54

Honey Removal Aids!

Tip: Spills can be easily cleaned up with lemon Mr. Clean®.



A Mann Lake Exclusive! When you're ready to pull honey, use Honey Robber®. Just a few drops on a fume board will move bees out of supers quickly. Whether it's cool or hot, morning or evening, you can count on Honey Robber® to get the job done. Contains the same active ingredient as Bee-Go® but works & smells better. No hazardous fee to ship pints, quarts or gallons of Honey Robber®. Honey Robber® can't ship air.

- DC-165** Pint Honey Robber® Ship wt. 3 lbs.....\$ 12.95
- DC-170** Quart Honey Robber® Ship wt. 4 lbs.....\$ 19.95
- DC-175** Gallon Honey Robber® Ship wt. 15 lbs.....\$ 62.95
- DC-180** 5 Gallon Honey Robber®.....\$ 239.95
- DC-181** 55 Gallon Drum Honey Robber®.....\$1,399.95

*5 Gallon & 55 Gallon Truck freight only. Call for freight quote.

Fume Board

- HD-155** 10 Frame Solar Fume Board 1-4 Ship wt. 5 lbs.....\$9.95
5+\$9.50
- HD-156** 8 Frame Solar Fume Board 1-4 Ship wt. 5 lbs.....\$9.95
5+.....\$9.50

Apply a small amount of Honey Robber® to the felt inner cover of the fume board in the shape of an "X" or "S". Place fume board on top of the upper super with corners of frames exposed for airflow. Removal time will depend on temperature and humidity.

Prices do not include shipping charges.

Cardboard Winter Wrap Cartons*

These specially coated, heavy-duty cardboard wraps are used to protect hives from the ravages of winter. Snug fit singles fit tightly over 2 deep hive bodies. Loose fit singles have approximately 1" around the outside of the hive bodies which allows extra room for insulation. **WW-145** Ship wt. 30 lbs. oversized for 1-10 qty.

- WT-145** Snug Fit Single 1 - 25 cartons.....\$8.95 each*
26 - 99 cartons.....\$8.50 each*
100 - 199 cartons.....\$8.25 each*
(17 1/4" x 21 x 21 1/8")



See page 54

- WT-150** Loose Fit Single 1 - 25 cartons.....\$9.50 each*
26 - 99 cartons.....\$8.95 each*
100 - 199 cartons.....\$8.75 each*
(Allows extra room for insulation. 19 1/4" x 22 3/4" x 22")



See page 54



*Subject to an additional UPS fee of \$6.00 per package shipped. (Up to 10 wraps per package.)

Keeping Healthy Bees

Our goal at Mann Lake is to help the beekeeper. We are on the forefront of research and development in the beekeeping industry; our information is backed up by scientific and field research in real hives just like yours. It can be detrimental to a beekeeper and the hive to use illegal treatments. These treatments have not been thoroughly tested for effectiveness and safety and have not been assigned a proper application rate to prevent resistance to or death from that product. Mann Lake Ltd. only recommends treatments that have been approved by the EPA, for your safety as well as the bees.

European Foulbrood:

- * Larvae die in a coiled, twisted, or irregular position in their cells. Cells are usually uncapped.
- * Larvae color may change from light cream to grayish brown, darkening as the dead larvae dry up.
- * Sour odor may be present.
- * Dead larvae are not rosy as in American Foulbrood.

Recommended treatment:

Treat with Tylosin or Terramycin. Terramycin is available in Terra-Patties® or Terra-Pro, treat in spring and fall. *Additional information see pages 43-45.*

American Foulbrood:

- * Brood pattern is irregular rather than compact.
- * Healthy larvae are glistening white color; diseased ones lose this appearance, and turn from light brown to dark brown and are upright, not twisted in cells.
- * Larvae long dead develop the consistency of glue and are difficult for bees to remove
- * Cappings become concave and some will be punctured by bees attempting to remove the dead brood.
- * Surface of cappings will be moist or wet rather than dry.
- * Some dead pupae, shrunken into scales, have their tongues protruding at right angle to their scale or straight up. This may be the only recognizable characteristic.

Recommended Treatment:

Treat with Tylosin or Terramycin. Terramycin is available in Terra-Patties® or Terra-Pro treat in spring and fall. *Additional information see pages 43-45.*

Tracheal Mite:

- * Very hard to detect without dissection. If you notice bees disappearing from your hive, you may want your State Inspector to test your bees for this mite.

Recommended Treatment:

Is best to treat this on a preventative measure by using Mite-a-Thol®, one bag per hive in spring and fall before and after honey flow. *Additional information see page 42.*

Varroa Mites:

- * Infested capped drone brood.
- * Disfigured adult bees, deformed legs or wings.
- * Bees discarding larvae and pupae.
- * Pale or dark reddish brown spots on other wise white pupae.
- * Visible on the outside of bee.
- * Spotty brood pattern.

Recommended Treatment:

Treat with either CheckMite+™ or Apistan® strips. Follow your states label instructions. *For additional treatments see pages 39 and 40.*

Nosema Disease:

- * Bees unable to fly or able to fly only short distances.
- * Bees seen trembling and quivering, colony restless.
- * Feces on combs, bottom boards, and outside walls of hive.
- * Bees seen crawling aimlessly on bottom board, near entrance, or on ground; some dragging along as if their legs are paralyzed.
- * Wings positioned at various angles from body – not folded in normal position over abdomen.
- * Abdomen distended (swollen).
- * When bee is dissected, midgut is swollen, dull, grayish white color and circular constructions of gut are no longer evident; normal gut color is brownish red or yellowish with many circular constructions.

Recommended Treatment:

Treat with a mixture of Fumagilin®-B and sugar syrup in the spring and fall. *Additional information see page 42.*

For more information about honeybee pests and diseases see our book selection on pages 85 - 86 and check out our website at www.mannlakeltd.com

Wax Moths:

- * Tunnels in combs.
- * Silk trails, crisscrossing one another over combs.
- * Small dark objects (excrement of wax moth larvae) in the silk trails in a hive.
- * Silk cocoons attached to wooden parts.
- * Destroyed comb, piles of debris on bottom board.
- * A strong hive usually controls moths without assistance. Remove any unnecessary supers or brood boxes so they have less area to defend.

Recommended Treatment: Treat with

Para-Moth. Only use in stored supers. *Additional information see page 45.*

Chalkbrood:

- * Mummified bodies of brood can often be seen in cells, on bottom boards, or at the hive entrance.
- * Very rare.

Recommended Treatment: There is no registered control agent for use against chalkbrood disease in Canada or the U.S. Although most reports indicate that chalkbrood does not cause serious economic losses, diseased colonies can have reduced populations and reduced honey production. Since adult bees can remove chalkbrood mummies, the disease often disappears as colonies increase in population and/or nectar flow commences.

Hive Beetle:

- * White egg masses deposited by the adult female into crevices within the hive.
- * Larvae tunnel through the combs, killing brood and ruining newly drawn comb.
- * Cream-colored larvae feed on pollen and honey for 10-16 days before exiting the hive to pupate in the soil around the hive.
- * Pupae are light tan to blueish tan in color.
- * Winged adults emerge from the soil in 2-3 weeks, re-enter the hive to feed and reproduce.
- * Life span is up to 6 months.

Recommended Treatment:

Treat with one Checkmite+™ strip per hive (in approved states only). Also treat with ground drench GardStar® to kill larvae that enter the soil. *For additional information see pages 39 & 41.*

Authorized Dealers

ALASKA WILDFLOWER HONEY WASILLA, AK 907-892-6175	HAVENS GOLD RUSH APIARIES JEFFERSONVILLE, IN 812-294-7917	QUEEN RIGHT COLONIES SPENCER, OH 440-647-2602
MASON & SON'S HONEY JONESBORO, AR 870-931-6134	HUMMER & SON BOSSIER CITY, LA 318-742-3541	RED BARN AG & HOME INC WESTVILLE, OK 918-723-5959
CROCKETT HONEY CO., INC. TEMPE, AZ 480-731-3936	CRYSTAL BEE SUPPLY PEABODY, MA 978-535-1622	GEORGE'S APIARY NOBLE, OK 405-872-8385
SOUTHWEST BEE SUPPLY TUCSON, AZ 520-882-7522	WARM COLORS APIARY SOUTH DEERFIELD, MA 413-665-4513	RUHL BEE SUPPLY GLADSTONE, OR 503-256-4231
LOS ANGELES HONEY COMPANY LOS ANGELES, CA 323-264-2383	SWANS HONEY ALBION, ME 207-437-2251	GLORYBEE FOODS, INC. EUGENE, OR 541-689-0913
SACRAMENTO BKEEPING SUPPLIES SACRAMENTO, CA 916-451-2337	GROEB FARMS, INC. ONSTED, MI 517-467-2065	LEICHER FAMILY FARM CHICORA, PA 724-445-2471
KNORR CANDLE SHOP, INC DEL MAR, CA 858-755-2051	BLOSSOMLAND SUPPLY BUCHANAN, MI 269-695-2310	DRAPER SUPER BEES APIARY MILLERTON, PA 570-537-2381
MILLER'S AMERICAN HONEY, INC. COLTON, CA 800-233-5337	NATURE'S NECTAR, INC STILLWATER, MN 651-439-8793	BEE WELL HONEY FARM & SUPPLY PICKENS, SC 864-868-9257
BEEKIND SEBASTOPOL, CA 707-824-2905	WALK ABOUT ACRES COLUMBIA, MO 573-474-8837	CHADWELL BEE SUPPLY OLIVER SPRINGS, TN 865-435-7502
SHADY MAPLE FARM SOUTH GLASTONBURY, CT 860-657-3182	AMOS APIARIES WEBB CITY, MO 417-673-1442	K & K BEE FARM JONESBOROUGH, TN 423-753-4420
THE HONEY HUT WINTER HAVEN, FL 863-291-4370	WHEATBELT INC. KANSAS CITY, MO 816-243-8222	RICH, LARRY SAVANNAH, TN 731-925-8538
MILLIE BEE MARIANNA, FL 850-557-3409	SANDY HOOK FEED & SEED SANDY HOOK, MS 601-736-6251	BEECARE LEANDER, TX 512-379-4301
HONEY N ME COVINGTON, GA 770-385-1261	MILLER BEE SUPPLY MILLERS CREEK, NC 888-848-5184	SAINT PIERRE ENTERPRISES FAIRFIELD, VT 802- 524-5BEE
ROSSMAN APIARIES MOULTRIE, GA 800-333-7677	ELM RIDGE APIARY LANCASTER, NH 603-788-4989	STEDMAN BEE SUPPLIES, INC. SILVERDALE, WA 360-692-9453
GOLDEN-BEE NEWNAN, GA 678-423-7168	HARVEY'S HONEY MONROEVILLE, NJ 856-358-1010	LANGE'S HONEY SKEP BURLINGTON, WA 360-757-1073
MOLOKAI MELI LLC KAUNAKAKAI, HI 808-558-8204	SIMPSON'S BEE SUPPLY DANVILLE, OH 740-393-2111	WV HONEY PRODUCERS WEBSTER SPRINGS, WV 304-269-7943
KK APIARIES SULLIVAN, IL 217-543-3731	GZBZ HONEY FARM CLYDE, OH 419-483-7496	HARDMAN SUPPLY COMPANY SPENCER, WV 304-872-2821

International Dealers

STRATEGIC BUSINESS CONSULTING
ETS MOURI ALI
HONEYBEE AUSTRALIS
F W JONES & SON LTD
ALBERTA HONEY PRODUCERS CO-OP
BEEKEEPERS SUPPLY CO
VANCOUVER ISLAND APIARY SUPPLY
MANITOBA COOPERATIVE HONEY
BEEMAID HONEY LTD.
BENSON BEE SUPPLIES
R & R HONEY
MIEL NORTENA S DE R L MI
DISPROANSA
APICOLA DEL ALTO LIMITADA
COLMENARES SOUTH WIND LTDA
DEL CAMPO APICULTURA C.I. LTDA
APIS
APIAGRO C.A.
NATIONAL AGRO CHEMICALS LTD

FAIRLAND, JOHANNESBURG
BEJAJA
IPSWICH
BEDFORD, QUEBEC
SPRUCE, GROVE ALBERTA
ST DAVIDS ONTARIO
DUNCAN BC
WINNIPEG, MANITOBA
WINNIPEG, MANITOBA
METCALFE, ONTARIO
WATFORD, ONTARIO
CUAUHTEMOC CHH
CUERNAUACA, MORELOS
SANTIAGO
SANTIAGO
BOGOT'A D.C.
KARPATOS, DODECANESE
CORDERO-EDO. TACHIRA
ELSOCORRO TRINIDAD & TOBAGO

AFRICA (SOUTH) 278-28-184110
ALGERIA 213-71-733139
AUSTRALIA 61-7-320 8118
CANADA 450-248-3323
CANADA 780-962-5573
CANADA 905-685-8111
CANADA 250-746-1676
CANADA 204-783-2240
CANADA 204-783-2240
CANADA 613-821-2797
CANADA 519-849-6036
MEXICO 52-625-581-2828
MEXICO 777- 3-144-49-21
CHILE 56-28219743
CHILE 56- 43-313779
COLOMBIA 57-3158510000
GREECE 224-50-23429
VENEZUELA 0276-3960355
WEST INDIES 868-674-5711

Shipping Information

SHIPPING RATES ON LARGE ORDERS

Orders weighing 200 pounds and more may be shipped more economical by other means than standard UPS. These orders may go by UPS One Hundred Rate or by truck depending on size of order and location it is being shipped to. Please call at 800-880-7694 and we will help you determine WHETHER AN ORDER SHOULD SHIP BY UPS OR BY TRUCK. We will do our best to give you the best rate possible, sometimes we can save you as much as 35% to 50% on shipping charges.

FREIGHT CHARGES - You pay all freight costs unless otherwise stated or agreed upon.

FIGURING SHIPPING CHARGES

- 1) Add shipping weights from each item, rounding each fraction of a pound to the next full pound.
- 2) If total of shipping weight is greater than 30 pounds remember to figure as multiple packages.
- 3) Find out which zone your located in by the first 3 digits of your zip code to the ZONE chart on page 54.
- 4) Use the shipping chart on page 54 to determine correct shipping charges for each package.

NOTE: Due to packaging restrictions multiple boxes may be necessary. We reserve the right to bill you for any additional shipping amount due.

CONVENIENT WAYS TO PAY - Visa, Discover, Mastercard, American Express, Check with Order, Wire Transfer.

OVERPAYMENTS - Overpayments may be refunded or credited to your account.

ORDER FOR EXPORT - Quotes on orders for export may include shipping, special packaging, and documentation at a customers request. Please call us for quotes. All shipments for export are subject to prepayment in U.S. Funds.

ADDITIONAL CHARGES

For each Address Correction - \$5.00

For each Acknowledgment of Delivery - \$1.50

For each Call Tag Received - \$7.00

Fuel surcharge subject to change without notice.

SALES, FREIGHT & WARRANTY INFORMATION

WARRANTY - Mann Lake Ltd. warrants its equipment to be free of defects in material and workmanship. If within 30 days of purchase you feel an item to be defective, please return the merchandise along with your sales receipt and Mann Lake Ltd. will refund the purchase price along with all transportation charges. Warranty does not cover damage to equipment arising from alteration, abuse or use of product for other than its intended purpose.

BACK ORDERS - Merchandise that is back-ordered will receive priority handling. **Freight charges for back-ordered items will be your responsibility.**

DAMAGED FREIGHT - All merchandise is shipped "F.O.B. Shipping Point". This is a legal term that means all merchandise becomes your property as soon as we give it to the freight carrier. The freight carrier is responsible for complete and safe delivery of your merchandise. It is your responsibility to inspect the merchandise when it is delivered. If the freight carrier fails to deliver your merchandise in good

condition, it is your responsibility to contact us so that we can file a claim with the carrier on your behalf.

SPECIAL ORDERS - Special orders may require a deposit.

PICK UP ORDERS - A call before you come by helps us serve you in the fastest manner and in most cases we can have the order ready for you to pickup.

ORDER DISCREPANCIES - Check all orders immediately upon receipt and contact us within 10 days on any discrepancies.

RETURNED MERCHANDISE - Please call if you need to return an item. We accept returns under the following conditions:

- 1) Call for Return Authorization.
- 2) Item must be in good condition.
- 3) Item must be returned within 30 days of receipt.
- 4) Original receipt is required.
- 5) In most cases a restocking fee of 20% will be charged.

We cannot accept returns on hazardous materials.

REPLACING MERCHANDISE - When a situation occurs where Mann Lake Ltd. is shipping another product to you as replacement for damaged or incorrect product, there will be an additional charge for the new product sent and a credit applied at time of the return of the incorrect product.

PRICES - Mann Lake Ltd. will invoice all orders on the basis of prices which are in effect at the time of shipment. We reserve the right to change catalog prices if we deem it necessary. Please feel free to confirm prices at any time.

LIABILITY - Our liability is limited to the purchase price paid for any item. We can make no warranty or representation, express or implied except all products conform to the description provided by the manufacturer on sales literature or product labels.

PRODUCT SUITABILITY - Due to many state and local codes and regulations regarding sales, construction, installation and use of products for certain purposes, we cannot guarantee compliance in every situation. We attempt to assure that all products comply with state and local codes and regulations, so before you purchase and use a product please review both the product application and local codes and regulations. Be sure that the product, its installation and its use will comply with those codes and regulations.

HOURS - 8:00 A.M. to 5:00 P.M. CST Monday through Friday. Our phones are answered 24 hours a day for ordering OR fill out the convenient order form and mail it to us.

Place orders by phone at 800-880-7694

Fax number 218-675-6156

E-mail address: beekeeper@mannlakeltd.com

Web site: www.mannlakeltd.com

STATE SALES TAX - When applicable, we are required to collect sales tax by law. Exemptions for sales tax will be allowed if you have either a signed Certificate of Resale or an Exemption Certificate. The tax forms vary by state, please call for details. Law requires that we have these certificates on file before any tax exemption can be allowed.

HOLIDAY CLOSINGS - We are closed New Year's Day, Memorial Day, July 4th, Labor Day, Thanksgiving Day, Thanksgiving Friday and Christmas Day.

ZONE CHART

To determine zone take the first three digits of the receiver's ZIP Code and refer to the chart below:

Dest. ZIP	Ground	Dest. ZIP	Ground	Dest. ZIP	Ground	Dest. ZIP	Ground
004-005	6	307	5	541-547	3	765	6
006-007	45	308-310	6	548	2	766-767	5
008	-	311	5	549	3	768-789	6
009	-	312-328	6	550-560	2	790-796	5
010-089	6	329-336	7	561	3	797-799	6
090-099	-	337-338	6	562-567	2	800-821	5
100-126	6	339	7	570-574	3	822	4
127	5	340	-	575	4	823-826	5
128-129	6	341-342	7	576	3	827-828	4
130-179	5	344	6	577	4	829-834	5
180-181	6	346	7	580-581	2	835-838	6
182	5	347	6	582-585	3	840-846	5
183	6	349	7	586-588	4	847-853	6
184-188	5	350-359	5	590-591	5	854	7
189-194	6	360-361	6	592-593	4	855-865	6
195-196	5	362	5	594-599	5	870-872	5
197-199	6	363-368	6	600-628	4	873	6
200-205	5	369-393	5	629	5	874-877	5
206-208	6	394-396	6	630-636	4	878-880	6
209-213	5	397	5	637-639	5	881	5
214	6	398	6	640-647	4	882-883	6
215	5	399	5	648	5	884	5
216	6	400-433	5	649-655	4	885-898	6
217	5	434-436	4	656-658	5	900-960	7
218-219	6	437-459	5	660-672	4	961	6
220-223	5	460-469	4	673	5	962-966	-
224-225	6	470-472	5	674-677	4	967-968	-
226-229	5	473-474	4	678-679	5	969	-
230-239	6	475-477	5	680-686	4	970-974	6
240-274	5	478-497	4	687	3	975	7
275-285	6	498-499	3	688-693	4	976-994	6
286-289	5	500-507	3	700-709	6	995-999	-
290-295	6	508	4	710-712	5	(-) means that ground service is not available to that zip code. Call for an air quote.	
296	5	509-514	3	713-714	6		
297-299	6	515-516	4	716-732	5		
300-303	5	520-521	3	733	6		
304	6	522-537	4	734-758	5		
305	5	538-539	3	759	6		
306	6	540	2	760-764	5		

UPS GROUND SERVICE

Weight	Zone 2	Zone 3	Zone 4	Zone 5	Zone 6	Zone 7	Zone 8
1	7.33	7.41	7.54	7.71	7.94	8.01	8.13
2	7.37	7.61	8.03	8.10	8.46	8.59	8.90
3	7.40	7.81	8.27	8.43	8.82	9.00	9.51
4	7.52	7.97	8.55	8.77	9.13	9.32	9.91
5	7.80	8.05	8.80	9.02	9.40	9.65	10.31
6	7.87	8.25	8.89	9.20	9.60	9.90	10.55
7	8.14	8.40	9.03	9.40	9.83	10.16	10.88
8	8.31	8.57	9.18	9.54	10.05	10.49	11.40
9	8.47	8.72	9.30	9.70	10.23	10.88	11.93
10	8.65	8.76	9.45	9.88	10.51	11.41	12.51
11	8.83	9.02	9.56	10.06	10.81	11.99	13.17
12	8.99	9.21	9.70	10.24	11.16	12.57	13.89
13	9.18	9.40	9.82	10.39	11.54	13.16	14.59
14	9.29	9.59	9.94	10.55	11.99	13.73	15.31
15	9.45	9.78	10.06	10.72	12.45	14.32	16.01
16	9.48	9.90	10.16	10.88	12.80	14.78	16.58
17	9.57	10.12	10.37	11.18	13.28	15.34	17.27
18	9.68	10.34	10.60	11.58	13.75	15.89	17.97
19	9.84	10.57	10.88	11.96	14.23	16.44	18.69
20	9.97	10.81	11.14	12.36	14.71	17.00	19.40
21	10.13	11.04	11.39	12.74	15.17	17.54	20.11
22	10.28	11.28	11.67	13.09	15.65	18.10	20.80
23	10.46	11.51	11.95	13.45	16.12	18.64	21.51
24	10.62	11.72	12.23	13.77	16.60	19.20	22.22
25	10.79	11.95	12.51	14.09	17.07	19.77	22.92
26	10.98	12.15	12.78	14.43	17.55	20.28	23.59
27	11.15	12.34	13.04	14.75	18.03	20.80	24.26
28	11.32	12.55	13.33	15.09	18.50	21.32	24.97
29	11.49	12.75	13.62	15.43	18.97	21.90	25.65
30	11.67	12.98	13.92	15.79	19.46	22.49	26.35
31	11.83	13.18	14.19	16.13	19.92	23.07	27.05
32	11.92	13.39	14.48	16.48	20.39	23.63	27.76
33	12.08	13.61	14.77	16.85	20.84	24.22	28.45
34	12.24	13.84	15.05	17.20	21.31	24.80	29.15
35	12.40	14.08	15.34	17.54	21.78	25.39	29.85
36	12.56	14.28	15.59	17.89	22.24	25.97	30.54
37	12.72	14.51	15.87	18.25	22.66	26.54	31.23
38	12.87	14.72	16.15	18.60	23.10	27.12	31.90
39	13.01	14.94	16.43	18.94	23.53	27.69	32.55
40	13.16	15.19	16.71	19.30	23.96	28.28	33.21
41	13.29	15.39	16.98	19.65	24.39	28.85	33.86
42	13.44	15.61	17.25	20.00	24.79	29.43	34.52
43	13.58	15.83	17.52	20.36	25.20	30.00	35.18
44	13.72	16.04	17.76	20.70	25.59	30.56	35.85
45	13.83	16.26	18.03	21.06	25.98	31.14	36.51
46	13.93	16.47	18.25	21.39	26.32	31.64	37.12
47	14.03	16.66	18.49	21.71	26.65	32.15	37.73
48	14.14	16.85	18.72	22.03	26.98	32.65	38.29
49	14.24	17.02	18.94	22.34	27.30	33.14	38.80
50	14.33	17.18	19.15	22.64	27.61	33.62	39.28
51	14.45	17.30	19.37	22.92	27.91	34.07	39.73
52	14.55	17.43	19.57	23.18	28.20	34.44	40.19
53	14.65	17.58	19.76	23.46	28.50	34.79	40.57
54	14.76	17.69	19.97	23.70	28.80	35.06	40.92
55	14.86	17.83	20.14	23.95	29.08	35.29	41.21
56	14.95	17.95	20.33	24.19	29.39	35.46	41.47
57	15.06	18.10	20.49	24.43	29.67	35.65	41.73
58	15.17	18.23	20.66	24.66	29.96	35.82	41.99
59	15.27	18.34	20.81	24.86	30.21	36.01	42.25
60	15.38	18.47	20.98	25.02	30.44	36.19	42.51
61	15.49	18.58	21.12	25.17	30.68	36.37	42.78
62	15.58	18.70	21.27	25.31	30.88	36.58	43.04
63	15.70	18.83	21.40	25.46	31.05	36.77	43.30
64	15.80	18.93	21.52	25.61	31.25	36.96	43.55
65	15.90	19.05	21.65	25.76	31.41	37.16	43.82
66	16.00	19.15	21.78	25.91	31.59	37.35	44.07
67	16.11	19.27	21.91	26.05	31.79	37.54	44.34
68	16.19	19.39	22.03	26.20	31.95	37.74	44.59
69	16.29	19.51	22.15	26.35	32.13	37.92	44.87
70	16.38	19.61	22.28	26.50	32.30	38.11	45.12

UPS Domestic and International Shipments (Oversize 1 and 2)
UPS Oversize 1



A package is considered "Oversize 1" (OS1) when all of the following conditions apply:

- The package's combined length and girth exceeds 84 inches.
- The package's combined length and girth is equal to or less than 108 inches.
- The package's actual weight is less than 30 pounds.

For each OS1 package, the billable weight is 30 pounds.

UPS Oversize 2



A package is considered "Oversize 2" (OS2) when all of the following conditions apply:

- The package's combined length and girth exceeds 108 inches.
- The package's actual weight is less than 70 pounds.

For each OS2 package, the billable weight is 70 pounds.



These items cannot be shipped by UPS or the US Postal Service. Please call 800-880-7694 to obtain a freight quote.

Deluxe Bee Suit

Deluxe Bee Suit Cotton/Polyester Blend

Mann Lake's comfortable lightweight Deluxe Bee Suit is available in a 50/50 cotton/polyester blend or in rip stop nylon for extra strength and durability. Available with or without an attached zipper square folding veil.

Helmet not included.



Elastic
Waist
Back

Elastic
Leg
Openings

Deluxe Bee Suit With Attached Zipper Veil

Item#	Size	Material	Price	Ship Wt.
CL-630	Small	Cotton/Polyester	\$57.95	4 lbs.
CL-631	Medium	Cotton/Polyester	\$57.95	4 lbs.
CL-632	Large	Cotton/Polyester	\$57.95	4 lbs.
CL-633	XLarge	Cotton/Polyester	\$57.95	4 lbs.
CL-634	XXLarge	Cotton/Polyester	\$57.95	4 lbs.
CL-830	Small	Rip Stop Nylon	\$67.95	2 lbs.
CL-831	Medium	Rip Stop Nylon	\$67.95	2 lbs.
CL-832	Large	Rip Stop Nylon	\$67.95	2 lbs.
CL-833	XLarge	Rip Stop Nylon	\$67.95	2 lbs.
CL-834	XXLarge	Rip Stop Nylon	\$69.95	2 lbs.

Elastic
Wrist Openings
& Thumb Holds

Made In
The USA!

Suit Measurements

Small	38" - 40" Chest
Medium	42" - 44" Chest
Large	46" - 48" Chest
XLarge	50" - 52" Chest
XXLarge	54" - 56" Chest



Deluxe Bee Suit Without Veil

Item#	Size	Material	Price	Ship Wt.
CL-530	Small	Cotton/Polyester	\$37.95	3 lbs.
CL-531	Medium	Cotton/Polyester	\$37.95	3 lbs.
CL-532	Large	Cotton/Polyester	\$37.95	3 lbs.
CL-533	XLarge	Cotton/Polyester	\$37.95	3 lbs.
CL-534	XXLarge	Cotton/Polyester	\$37.95	3 lbs.
CL-730	Small	Rip Stop Nylon	\$47.95	1 lbs.
CL-731	Medium	Rip Stop Nylon	\$47.95	1 lbs.
CL-732	Large	Rip Stop Nylon	\$47.95	1 lbs.
CL-733	XLarge	Rip Stop Nylon	\$47.95	1 lbs.
CL-734	XXLarge	Rip Stop Nylon	\$49.95	1 lbs.

Clothing Starter Kits

Cotton/Poly Blend Clothing Starter Kit

Whether you are new to beekeeping or just need some new duds, this kit gets you ready for the bee yard. Maybe you have a "helper" in mind that could be persuaded to join you with the right gear! *Ship wt. 5 lbs.*

Kit Includes:

- White Vented Mesh Helmet
- Cotton/Poly Deluxe Bee Suit With Attached Zipper Veil (state size)
- Heavy Duty Vented Leather Gloves (state size)

CL-180 Cotton/Poly Beekeeping Clothing Kit.....\$87.95



Suit Measurements	
Small	38" - 40" Chest
Medium	42" - 44" Chest
Large	46" - 48" Chest
XLarge	50" - 52" Chest
XXLarge	54" - 56" Chest

Rip Stop Nylon Clothing Starter Kit

For those who prefer the nylon suit, we now have a kit for you! *Ship wt. 5 lbs.*

Kit Includes:

- White Vented Mesh Helmet
- Rip Stop Nylon Deluxe Bee Suit With Attached Zipper Veil (state size)
- Heavy Duty Vented Leather Gloves (state size)

CL-179 Rip Stop Nylon Beekeeping Clothing Kit.....\$97.95



Mann Lake Ltd. Hat

CL-602 Mann Lake Hat Tan/Navy.....\$7.95

CL-603 Mann Lake Hat Tan/Black.....\$7.95

Ship wt. 1 lb.

Swab Sting Kill

This topical anesthetic is for the temporary relief from the pain and itching of insect bites and minor burns. Keep these on hand for those troublesome bee stings! *Ship wt. 1 lb.*

DC-210 Swab Sting Kill.....\$4.95



Prices do not include shipping charges.

Honey Maker® Bee Suit

Honey Maker® Bee Suits

Honey Maker® Bee Suits are specially tailored for the hard working beekeeper. A few features include: relaxed fit so the Honey Maker® doesn't bind when you bend over, suit material is made of heavy duty cotton/poly or is available in ripstop nylon. Waist is elastic for a more comfortable fit, two chest pockets with velcro closures, and heavy duty zippers at the neck, chest and ankles for easy on and off, and self supporting collapsible veil. *Ship wt. 4 lbs. on all sizes.*



Made In
The USA!

Honey Maker® Suit Cotton/Poly W/Veil

- CV-105** Small Honey Maker®.....\$139.95
- CV-110** Med. Honey Maker®.....\$139.95
- CV-115** Lg. Honey Maker®.....\$139.95
- CV-120** XL Honey Maker®.....\$139.95
- CV-125** XXL Honey Maker®.....\$149.95

Honey Maker® Suit Nylon W/Veil

- CV-205** Small Nylon Suit.....\$139.95
- CV-210** Med. Nylon Suit.....\$139.95
- CV-215** Lg. Nylon Suit.....\$139.95
- CV-220** XL Nylon Suit.....\$139.95
- CV-225** XXL Nylon Suit.....\$149.95

Honey Maker® Suit Nylon No Veil

- CV-230** Small Nylon No Veil.....\$ 99.50
- CV-235** Med. Nylon No Veil.....\$ 99.50
- CV-240** Large Nylon No Veil.....\$ 99.50
- CV-245** XL Nylon No Veil.....\$ 99.50
- CV-250** XXL Nylon No Veil.....\$103.50

Tip: Wearing a baseball cap will hold the veil away from your face .

Available in
65% Polyester /
35% Cotton Blend
Or 100% Rip Stop
Nylon

Honey Maker® Bee Suit					
Size	Small	Medium	Large	XLarge	XXLarge
Approximate Weight	130 lbs.	160 lbs.	220 lbs.	280 lbs.	300+ lbs.
Approximate Chest Size	38" - 40"	42" - 44"	46" - 48"	50" - 52"	54" - 56"
Approximate Height	5' 5"	5' 8"	6' +	6' +	6' +
Inseam	29"	32"	33"	33"	33"

Pollinator Jacket & Child Suits

*Self Supporting
Collapsible Veil*



Pollinator® Jacket

If you want all the features of our Honey Maker® Suit without the legs, the Pollinator® Jacket is for you! For people who haul bees this is the jacket of choice for comfort and function. Available in cotton/polyester only. *Ship wt. 3 lbs. all sizes.*

- CV-130** Small Pollinator® Jacket.....\$105.95
- CV-135** Med. Pollinator® Jacket.....\$105.95
- CV-140** Lg. Pollinator® Jacket.....\$105.95
- CV-145** XL Pollinator® Jacket.....\$105.95
- CV-150** XXL Pollinator® Jacket.....\$115.95

**Made In
The USA!**

Mann Lake's Honey Maker® suits and Pollinator® Jackets are bee tight and roomy enough to put in a full day in the bee yard without binding!

*Elastic Wrists
and Thumb Hold*

*Elastic
Waistband*



CL-160

*Elastic
Waist and
Ankles*

CV-500
Child Size
6-10



*Self Supporting
Collapsible Veil*

CV-550
Child Size
12-14



*Elastic
Wrists and
Thumb
Hold*

Outfit your favorite 'sidekick' with a Child's Honey Maker® Suit!

This suit has all of the features of the full size suit with the added benefit of two-piece construction and an elastic waist. Made of cotton/polyester blend, this suit is generously cut to grow with your child. Elastic thumb-holds, hive tool pocket, elastic wrists and ankles and self supporting collapsible veil make this suit perfect for your favorite hive buddy!

- CV-550** Junior Suit size 12 - 14 *Ship wt. 3 lbs.*.....\$95.95
- CV-500** Child's Suit size 6 - 10 *Ship wt. 2 lbs.*.....\$89.95
- CL-160** Child Size Goatskin Gloves *Ship wt. 2 lbs.*..\$18.95

Prices do not include shipping charges.

Economy Hooded Suit & Jacket

Economy Hooded Suit

We designed this Economy Hooded Suit and Jacket for backyard beekeepers on a budget. The lighter weight fabric of these suits will keep you cooler in hot weather while you enjoy the double layer self-supported hood. This imported suit is perfect for any beekeeper who does not require the more rugged Honey Maker® Suit.

- CV-300** Economy Hooded Suit Small *Ship wt. 4 lbs*.....\$69.95
- CV-305** Economy Hooded Suit Medium *Ship wt. 4 lbs*.....\$69.95
- CV-310** Economy Hooded Suit Large *Ship wt. 4 lbs*.....\$69.95
- CV-315** Economy Hooded Suit XLarge *Ship wt. 4 lbs*.....\$69.95
- CV-320** Economy Hooded Suit XXLarge *Ship wt. 5 lbs*.....\$69.95
- CV-325** Economy Hooded Suit XXXLarge *Ship wt. 5 lbs*.....\$69.95

New!



*2 Layers of
Fabric on the
Back of the Veil*

*Self Supporting
Collapsible Veil*

*Double Neck
Zippers*

*Elastic Wrists
and Thumb Hold*

*Heavy Duty
Zippers At
Ankles For
Easy On
And Off*



Economy Hooded Jacket

- CV-400** Economy Hooded Jacket Small *Ship wt. 3 lbs*.....\$45.95
- CV-405** Economy Hooded Jacket Medium *Ship wt. 3 lbs*.....\$45.95
- CV-410** Economy Hooded Jacket Large *Ship wt. 3 lbs*.....\$45.95
- CV-415** Economy Hooded Jacket XLarge *Ship wt. 4 lbs*.....\$45.95
- CV-420** Economy Hooded Jacket XXLarge *Ship wt. 4 lbs*.....\$45.95
- CV-425** Economy Hooded Jacket XXXLarge *Ship wt. 4 lbs*.....\$45.95

Veils & Helmets

Square Folding Veil

Square veil is constructed of 10 mesh steel wire. Folds flat. Helmet required, sold separately.

Ship wt. 1 lb.

CL-100 Square Veil w/elastic.....\$10.95

CL-105 Square Veil w/string.....\$10.95

CL-110 Square Veil w/zipper.....\$12.95

Square Folding Polyester Veil

Most durable square folding veil on the market. Machine washable, this stiff polyester mesh veil will last season after season. Helmet required, sold separately. Ship wt. 1 lb.

MV-200 Square Folding Veil w/string\$17.95

Round Veil

Round veil is available with string or elastic. A nice feature of this veil is there are no seams to inhibit vision. Helmet required, sold separately. Ship wt. 1 lb.

CL-121 Round Veil w/elastic.....\$10.95

CL-122 Round Veil w/string.....\$10.95

CL-123 Round Veil w/zipper.....\$12.95

Alexander Veil

Similar to the round veil, except Alexander veil has cloth top and is to be used without a helmet. Some prefer to wear a baseball cap. Ship wt. 1 lb.

CL-115 Alexander Veil w/elastic.....\$11.95

CL-120 Alexander Veil w/string.....\$11.95

Veil With Hat

Designed for use with Africanized Bees. Hat is sewn directly to veil and the screening makes this veil keep its original shape. Veils are made from a tough polyester material which never rusts. If accidentally bent, the material bounces back to its original shape without creasing. Adjustable headband. Ship wt. 2 lb.

MV-105 Veil w/Cloth Hat & elastic\$39.95

Helmets

An all-plastic helmet with a plastic headband. Ship wt. 3 lbs.

CL-130 Plastic Helmet White.....\$ 9.95

Ventilated mesh helmets are cool and lightweight, with an additional coating to increase its' durability when wet. Ventilated helmets also come with a built in sweatband and clips to help keep the veil in place on the helmet. Ship wt. 3 lbs.

CL-135 Vented Helmet White.....\$12.95

CL-136 Vented Helmet Tan\$12.95



Tip: Veil with string has the long string coming out in the front. Veil with elastic has long string coming out in the back and a loop in the front.

Prices do not include shipping charges.

Gloves & Accessories

Heavy Duty Vented Cowhide Leather Gloves

Vented leather gloves are made of top grain soft pliable cowhide with stiff nylon ventilator and canvas gauntlet. Elastic at top makes them bee tight. *Ship wt. 2 lbs.*

- CL-140** Small Vented Gloves.....\$19.95
- CL-141** Medium Vented Gloves.....\$19.95
- CL-142** Large Vented Gloves.....\$19.95
- CL-143** X Large Vented Gloves.....\$19.95



Goatskin Gloves

Meyer stingless goatskin gloves have a nylon sleeve with extremely pliable and sting resistant glove. *Ship wt. 1 lb.*

- CL-156** Small Meyer Gloves.....\$18.95
- CL-157** Medium Meyer Gloves.....\$18.95
- CL-158** Large Meyer Gloves.....\$18.95
- CL-159** X Large Meyer Gloves.....\$18.95
- CL-170** XX Large Meyer Gloves.....\$18.95
- CL-160** Child's Size Meyer Gloves.....\$18.95



Economy Cowhide Leather Gloves

These Economy Leather Gloves feature a soft cowhide leather lower and a sturdy canvas upper at a price that can't be beat! *Ship wt. 2 lbs.*

- CL-605** Medium Economy Leather Gloves.....\$ 9.95
- CL-610** Large Economy Leather Gloves.....\$ 9.95
- CL-615** X Large Economy Leather Gloves.....\$ 9.95



Cotton Lined Canvas Gloves

Made of heavy canvas cloth that has been lined with cotton batting for added protection. The cotton lining is sewn right into the glove. Machine washable, gentle cycle. *Ship wt. 2 lbs.*

- CL-161** Small Cotton Lined Canvas Gloves.....\$ 6.95
- CL-162** Medium Cotton Lined Canvas Gloves.....\$ 6.95
- CL-163** Large Cotton Lined Canvas Gloves.....\$ 6.95
- CL-164** X Large Cotton Lined Canvas Gloves.....\$ 6.95



Gloves & Accessories

Chemical Resistant Gloves - Disposable

These flexible non-latex "surgical-type" gloves are great when a lot of dexterity is desired. Made of 100% nitrile, these gloves provide at least three times the puncture resistance of latex or vinyl gloves of comparable thickness! *Ship wt. 1 lb.*

RL-122 Large Disposable Chemical Glove Size 8-9.....\$1.50

RL-123 X-Large Disposable Chemical Glove Size 9-10\$1.50



Heavy-Duty Chemical Resistant Gloves

This flexible, fully coated neoprene glove will hold up to years of abuse and is washable! Durable and abrasion resistant, these gloves are nearly as flexible as an unsupported glove! Two-piece interlock liner enhances glove flexibility and integrity, while the textured exterior provides an excellent "wet grip"! *Ship wt. 1 lb.*

RL-120 Medium Heavy Duty Chemical Gloves.....\$6.95

RL-121 X-Large Heavy Duty Chemical Gloves.....\$6.95



Sweat Bands

Keep the sweat out of your eyes. Self adjusting elastic band holds sponge in place. Very absorbent. *Ship wt. 1 lb. per 10 bands.*



CL-240 Sweatbands.....\$.99

Canvas Leggings

Canvas leggings help keep pant legs tight. Velcro closures. *Ship wt. 1 lb.*

CL-265 Leggings per pair....\$16.95



Cotton Or Nylon Slip On Sleeves



Smaller wrist with larger opening at the elbow. Available in two sizes. *Ship wt. 1 lb.*

CL-251 Nylon Slip On Sleeves Large\$11.95 per pair

CL-252 Nylon Slip On Sleeves Regular.....\$11.95 per pair

CL-253 Cotton/Poly Slip On Sleeves Regular...\$11.95 per pair

CL-254 Cotton/Poly Slip On Sleeves Large.....\$11.95 per pair

Velcro Leg Straps

Self adhering 20" long by 1 1/2" wide, sturdy nylon velcro fasteners.



Ship wt. 1 lb. per 5 pair.

CL-250 Leg Straps.....\$2.50

Canvas Leg Apron

Stay clean in the honey house with our sturdy Canvas Leg Apron. Leg straps are removable *Ship wt. 2 lbs.*



CL-260 Leg Apron...\$16.95

Prices do not include shipping charges.

Refractometers & Color Graders



HH-670

High Quality Metal Refractometer

This Refractometer combines affordability with high quality accuracy! Measures moisture from 12%-27% and works in any strong light. This Refractometer comes pre-calibrated and features a rubber grip and comfortable eyepiece. Works in any strong light. This is the one to buy for that quality look, feel and function at a bargain basement price! *Ship wt. 1 lb.*

HH-670 High Quality Metal Refractometer.....\$ 79.95

ATAGO Hand-Held Refractometer

This is the Cadillac of hand-held refractometers! Measuring 12%-30% moisture content, this model HHR-2N features an easy to read display, a built-in thermometer to aid in re-calibration and temperature correction scale for the optimal optical honey testing experience!

Ship wt. 2 lbs.

HH-660 ATAGO Hand-Held Refractometer.....\$289.95



HH-660

ATAGO Digital Refractometer

This pocket refractometer can easily measure the moisture percentage in honey and displays the reading digitally. It is ergonomically designed to be comfortable, easy to use, light and compact. This highly portable unit can take measurements out in the field or in the honey house. Measurement range 12% - 30% Measurement accuracy +/- 0.2%. Automatic temperature compensation, IP65 water resistant classification, easy to clean under running water. *Ship wt. 2 lbs.*

HH-671 Atago Digital Refractometer.....\$329.95



HH-671

Calibration Fluid

HH-675 Glycerol calibration fluid, microtube, approx. 5 calibrations *Ship wt. 1 lbs.....\$ 8.95*

HH-680 Glycerol calibration fluid, 30 ml bottle approx. 75 calibrations *Ship wt. 1 lbs.....\$105.10*

Hanna Digital Color Grader

This portable honey color analyzer measures the percent light transmittance of honey compared to analytical reagent grade glycerol (calibration fluid.) The transmittance value allows identification of the honey Pfund grade. The instrument directly displays the measurement result expressed in mm Pfund. Features an auto shut-off feature that will turn the instrument off after 10 minutes of non-use. This unit is rugged and simple to use with easily identifiable readings. Measures a range 0 - 150 mm Pfund. Comes complete with 82 matched square cuvettes, glycerol, syringes, batteries and instructions. Accessory kit includes 82 matched square cuvettes, glycerol, syringes and batteries.

HH-667 Hanna Digital Color Grader *Ship wt. 5 lbs.....\$495.00*

HH-668 Accessory kit *Ship wt. 2 lbs.....\$ 25.95*

HH-665 4 pack, replacement light sealed caps *Ship wt. 1 lb ...\$ 8.50*



HH-667

Uncapping Knives

Mann Lake Electric Uncapping Knife



HD-430

This electric knife is a great value. On/off switch with power indicator is conveniently located on the handle. Automatic temperature control. 120 volt. 10" x 2" blade.

HD-430 Non-adjustable Electric Uncapping Knife *Ship wt. 4 lbs...*\$79.95

Knife With Control Unit

This knife has a temperature adjusting control box on the cord with an easily turned knob. *Ship wt. 4 lbs.*

HD-415 Knife w/Control Unit.....\$99.95



HD-415

Prices do not include shipping charges.

Electric Master Knife

The temperature can be adjusted by turning a setscrew at the base of the blade with a screwdriver. *Ship wt. 4 lbs.*

HD-405 Master Knife Electric.....\$87.95



HD-405

Electric Speed King

The temperature can be adjusted by turning a setscrew at the base of the knife with an allen wrench. *Ship wt. 4 lbs.*

HD-410 Speed King Electric.....\$85.95



HD-410

Plain (Non-Electric) Knife

This knife is heated by immersing in boiling water. *Ship wt. 4 lbs.*

HD-420 Plain Knife (non-electric).....\$19.95



HD-420

Uncapping Equipment



HH-187

Stainless Steel Uncapping Tank

Uncapping Tank comes equipped with full lid, tray, strainer, legs and honey gate underneath. Simply hang frames in the tray after uncapping and let drain until extracting time. Holds 10 frames. *Ships as 2 packages one at 70 lbs. oversize and one at 9 lbs.*

HH-187 Uncapping Tank w/strainer 24 1/2" x 20" x 34 1/2"\$259.95

HH-188 Uncapping Tank w/strainer 41" x 20" x 34 1/2"\$329.95



See page 54

Tip: Wrap metal grid with nylon strainer cloth (see below) to strain honey from your cappings wax.

Shop 24 hours a day! Visit our website at www.mannlakeltd.com



HH-231



See page 54

Plastic Uncapping Tank

This is a truly remarkable multi-purpose Uncapping and Straining Tank at the most reasonable price found anywhere! Made of high-density polyurethane, this Uncapping Tank stores up to 10 deep or shallow frames for uncapping with a convenient lid for storage. Featuring a metal strainer grid that fits in the bottom, this dual unit stacks one way for uncapping and reversed 180 degrees becomes a strainer tank holding 5 gallons complete with honey gate! *Ships 30 lbs. oversize. (See our uncapping knives on page 70.)*

HH-231 Plastic Uncapping Tank.....\$95.95

Double Sieve

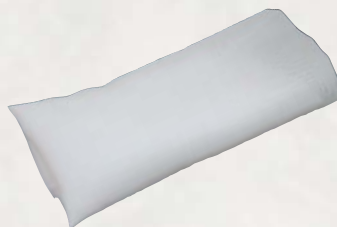
Our stainless steel double sieve makes short work of straining impurities from your honey. The screen is graduated from a coarse removable inner basket to a fine screen on the outer basket. Use the strainer cloth in between and you've got the cleanest honey possible with a home bottling system.



HH-440 Double Sieve Ship wt. 2 lbs...\$41.95

Nylon Strainer Cloth

Use alone or with the Double Sieve for straining impurities from your honey. This 68 x 68 count cloth is hand washable. 60" wide. *Ship wt. 1 lb. per yard.*



HH-560 Nylon Strainer Cloth Per Yard.....\$6.95

HH-380 Extra Fine Filter For 5 Gallon Pail....\$3.25

Wax Processing Equipment

New!

Attached to water jacket for faster heating



66 Gallon Wax Melter

- 1,500 watt, 240 volt
- On wheels for easy movement
- Fully insulated
- Full water jacket with drain
- Preset temperatures for optimal results
- 66 gallon capacity
- Bottom tapers to the drain
- Inside diameter 28"
- Overall dimensions 36" tall x 40" wide
- Optional screen to retrieve wax that would otherwise remain in slum gum

HH-180 66 Gallon Wax Melter.....CALL
Ship wt. 330 lbs.

HH-179 Wax Retrieval Screen.....CALL



See page 54

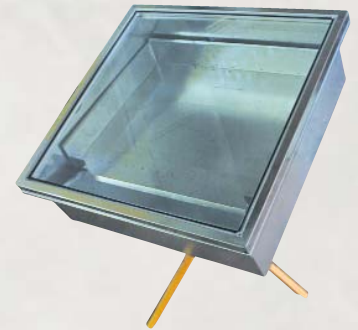
Deluxe Solar Wax Melter

Considered the finest method of processing beeswax cappings, the Solar Wax Melter has no direct heat source, which means less discoloration as well as natural bleaching by the sun to provide you with the lightest rendered beeswax cappings possible!

Our Deluxe Solar Wax Melter is constructed of galvanized steel with the interior dimensions 24 1/2" x 24 1/2" x 7 1/2" and stands 33 1/2" tall. This melter has a double insulated plate glass lid for maximum solar power and has a heavy-duty steel stand with attached pivoting base so that you can easily "follow the sun across the sky". Ships as 2 packages 1 at 70 lbs. and 1 at 30 lbs.

HH-185 Deluxe Solar Wax Melter.....\$299.95

Prices do not include shipping charges.



3" x 22" Catch pan holds approximately 5 lbs. of wax.

Wax Pans

This is a heavy-duty, semi-flexible plastic Wax Pan that is ideal for processing 20 lb. blocks of crude beeswax. Size: 5" x 15" x 19 1/2". Ship wt. 3 lbs.

HD-730 Wax Pan.....\$9.95



This high density Wax Pan is almost indestructible! Constructed of extremely durable material, this rigid pan will hold up to 35 lbs! This is the Wax Pan of choice. Size: 12" x 15" x 20". Ship wt. 4 lbs.

HD-732 Wax Pan.....\$23.65



3 Frame Extractors



HH-160

Econo 3 Frame Hand Crank Extractor

- 26 gauge stainless steel
- Holds 3 deep, 3 medium or 6 shallow frames
- 1 1/2" honey gate included

**The BEST Value Available In
3 Frame Hand Crank Extractors!**



See page 54

HH-160 3 Frame Economy Hand Crank.....\$229.00
Ships as 1 package at 70 lbs.

HH-161 17" Economy Extractor Stand.....\$ 35.95
Ships as 1 package at 8 lbs.

Easy Extractor Combo Unit

- 26 gauge stainless steel
- Holds 3 deep, 3 medium or 6 shallow frames
- 1 1/2" honey gate included
- Includes stand, double sieve, and pail with honey gate

HH-162 Easy Extractor Combo\$309.95
Ships as 2 packages one at 70 lbs. and one at 15 lbs.

Combo unit includes the Extractor, Stand, Double Sieve and 5 gallon Honey Pail with gate!



HH-162



See page 54



HH-190

**The Easiest
Extractor To
Turn!**



Deluxe 3 Frame Hand Crank Extractor

- 26 gauge stainless steel
- Side crank model
- Legs are included
- Holds 3 deep, 3 medium or 6 shallow frames
- 1 1/2" honey gate included

HH-190 Deluxe 3 Frame Hand Crank.....\$299.95
Ships as 2 packages one at 70 lbs. and one at 9 lbs.



See page 54

3 Frame Extractors

3 Frame Motorized Extractor

- 26 gauge stainless steel
- Holds 3 deep, 3 medium or 6 shallow frames
- Variable speed control unit
- Gear driven, 110 volt motor
- Detachable hand held control unit with maximum RPM of 300
- 1 1/2" honey gate included



See page 54



HH-200 3 Frame Motorized Extractor.....\$529.95

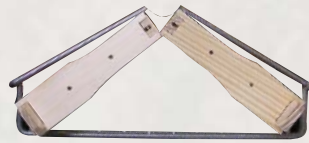
Ships as 2 packages one at 70 lbs. and one at 9 lbs.

All of our extractors are complete and no additional baskets or equipment are required.

Frame placement in the 3 frame extractors



Holds 3
9 1/8" or 6 1/4" Frames
Tangential



Holds 6
5 3/8" Frames
Radial

Tangential extractors require that frames be removed and turned to extract on both sides.

Compare The Features:

3 Frame Extractor	Item# HH-160 Page 73	Item# HH-162 Page 73	Item# HH-190 Page 73	Item# HH-200 Page 74
26 gauge stainless steel	✓	✓	✓	✓
Holds 3 deep, 3 medium or 6 shallow frames	✓	✓	✓	✓
3/1 turning ratio	✓	✓	✓	
Crank location	Top	Top	Side	
Stand (HH-161) or attached legs	Stand Optional	Stand Included	Legs Included	Legs Included
110 v, variable speed, gear driven motor				✓
1 1/2" Honey gate included	✓	✓	✓	✓
Double sieve included		✓		
5 gallon pail with honey gate included		✓		
	\$229.00	\$309.95	\$299.95	\$529.95

Motorized Conversion Kits, replacement lids, handles and hinges are available, call for details.

Voltage Converter 500 Watt

This Voltage Converter will convert up to two devices from either 110V to 220V or from 220V to 110V. Maximum amperage is 500 Watts. (Note: Not intended for use with electric heaters). *Ship wt. 8 lbs.*



HD-170 Voltage Converter 500 Watt\$89.95

Prices do not include shipping charges.

4 Frame Extractors

4 Frame Basket Style Extractor



Deep frame placement



Medium/shallow frame placement

HH-165



See page 54

Height On Legs: 41" Tall
 Outside Dimensions: 24.4" High
 21.8" Wide
 Inside Dimensions: 24.4" Deep
 20.6" Wide



HH-163



HH-163 4 Frame Motorized Extractor.....\$749.95

HH-165 4 Frame Hand Crank Extractor....\$429.95

Ships as 2 packages one at 70 lbs. and one at 9 lbs.

Compare The Features:

4 Frame Extractor	Item# HH-163	Item# HH-165
26 gauge stainless steel	✓	✓
Holds 4 deep, 8 medium or 8 shallow frames	✓	✓
3/1 turning ratio		✓
Free wheeling side crank with hand brake		✓
Attached legs	✓	✓
110 v, variable speed, gear driven motor	✓	
1 1/2" honey gate included	✓	✓
	\$749.95	\$429.95



HH-575

Food Grease

FGL- (Food Machinery Lubricant). 14 oz. tube. USDA approved. A must for every honey house. 10 tubes per case. *Ship wt. 2 lbs. each.*

HH-575 Food Grease 1 - 9 tubes.....\$ 6.95 each
 10+ tubes.....\$ 5.95 each

EZ-Lift Hive Truck

With this ingenious steel hive truck, you can single-handedly move hundreds of pounds! By simply walking the cart into the first or second box of the colony, you can re-palletize, rotate boxes or move colonies. The retractable hive catch slips easily into the hand holds for secure lifting and adjusts to lift deeps or shallows. Amazingly responsive, you can maneuver and adjust a colony with ease. *Ship wt. 70 lbs.*

MH-105 EZ-Lift Hive Truck.....\$299.95



MH-105



See page 54

9/18 Radial Extractors



Each leg is pre-drilled for easy mounting.



See page 54

Hand Crank Radial 9/18 Frame Extractor

9/18 Frame Stainless Steel hand crank extractor can extract 9 deep frames, 18 medium frames or 18 shallow frames. Legs included. Easily upgraded to a motorized unit with our Motor and Conversion Kit. *Ships crated and fully assembled by truck. Call for packaging & freight quote.*

HH-170 9/18 Frame Hand Crank Extractor...\$545.00

HH-166 Motor and Conversion Kit.....\$399.00

Perfect for the beekeeper with 10+ hives!

Height On Legs: 39" Tall
 Outside Dimensions: 24" High
 25 1/2" Wide
 Inside Dimensions: 24" Deep
 14" Wide

Compare The Features:

9/18 Frame Extractor	Item# HH-170	Item# HH-215
26 gauge stainless steel	✓	✓
Holds 9 deep, 18 medium or 18 shallow frames	✓	✓
3/1 turning ratio	✓	
Side crank	✓	
Attached legs	✓	✓
110 v, variable speed, gear driven motor		✓
1 1/2" honey gate included	✓	✓
	\$545.00	\$899.95

Prices do not include shipping charges.



Motorized Radial 9/18 Frame Extractor

Motorized Features

- 110 volt, gear driven motor with a maximum output of 320 RPM
- Variable drive
- Detachable speed control

HH-215 9/18 Frame Motorized Extractor.....\$899.95

Ships crated and fully assembled by truck. Call for packaging & freight quote.

Height On Legs: 39" Tall
 Outside Dimensions: 24" High
 25 1/2" Wide
 Inside Dimensions: 24" Deep
 24 1/4" Wide

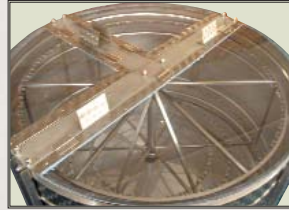
Great for the beekeeper with 20+ hives!

Commercial Extractors

35/50 Frame Radial Extractor



3 point opening for easy access when loading and unloading frames.

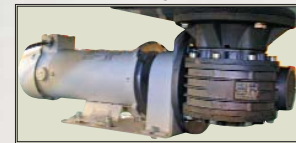


See page 54



Tip: You can actually fit 65 6 5/8" frames in the 35/50 by doubling the frames in smooth reel.

60 Frame Radial Extractor



- HH-122 35/50 Frame Manual Speed Control Extractor.....CALL
- HH-123 35/50 Frame With Auto Speed Control And Valve.....CALL
- HH-124 35/50 Frame With Auto Speed Control Without Valve.....CALL
- HH-156 60 Frame With Auto Speed Control Without Valve.....CALL
- HH-157 60 Frame With Auto Speed Control And Valve.....CALL
- HH-158 60 Frame Manual Speed Control ExtractorCALL

Ships crated and fully assembled by truck. Call for packaging & freight quote.

Compare The Features:

Commercial Extractors	Item# HH-122	Item# HH-123	Item# HH-124	Item# HH-156	Item# HH-157	Item# HH-158
Industrial strength 16 gauge stainless steel	✓	✓	✓	✓	✓	✓
Frame capacity	35/50	35/50	35/50	60	60	60
Available with smooth or segmented reel	✓	✓	✓	✓	✓	✓
3 point opening	✓	✓	✓	✓	✓	✓
Full wash down, 1 HP gear driven motor	✓	✓	✓	✓	✓	✓
Manual speed control	✓					✓
Auto speed control with steam valve		✓			✓	
Auto speed control without steam valve			✓	✓		
Tank diameter	38"	38"	38"	51"	51"	51"
Total height	39 1/4"	39 1/4"	39 1/4"	40"	40"	40"
Tank depth	28"	28"	28"	28"	28"	28"
Distance from floor to bottom of tank	12"	12"	12"	12"	12"	12"

Commercial Extractors/Controllers

120 Frame 63" Diameter (63" with legs)

This superb quality extractor is built to last for the beekeeper who means business!

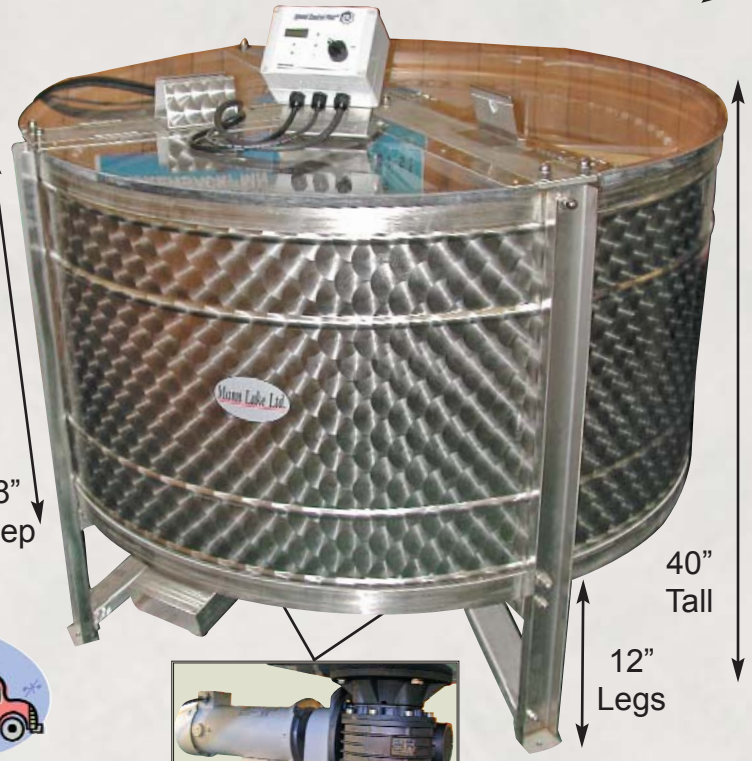
Features include:

- Industrial strength, 16 gauge stainless steel tank
- Segmented stainless steel reel to keep frames properly spaced for proper extraction flow
- 3 Point opening for easy access when loading and unloading
- Full wash-down, 1 HP gear drive motor with no belts to slip or break, efficient side wall flow and easy drainage
- Available with smooth or segmented reel

28" Deep

40" Tall

12" Legs



Prices do not include shipping charges.

See page 54



- HH-220** 120 Frame Extractor With Manual Speed Control.....CALL
 - HH-221** 120 Frame Extractor With Speed Control With Valve.....CALL
 - HH-222** 120 Frame Extractor With Speed Control Without Valve.....CALL
- Ships fully assembled by truck. Call for packaging & freight quote.*

Speed Control Plus™ Model SCP-100 Honey Extractor Control

Do frames ever break during the extraction process because you are running too fast, or are you running the extractor fast enough? Would you like to have steam automatically injected during the extraction cycle? If so, Mann Lake's Speed Control Plus™ is for you!

- Variable speed control drive
- Programmable ramp
- Programmable steam injections
- Programmable cycle time

MOST Reliable Speed Control On The Market!

Replaces Hubbard & Dadant Controllers



Mann Lake Speed Control Plus™ Features:

- Stores 5 programmable ramp/speed profiles
- Up to 4 programmable steam injection intervals
- NEMA 4 wash-down enclosure
- LCDs indicate current status
- Designed for 1/2 hp - 2 hp shunt-wound (variable speed) or permanent magnet DC motors
- 115 volt or 230 volt operation

Easy To Hook Up:

It takes 15-30 minutes to install unit. Simply mount the control and connect three cables:

- Power source
- Motor
- 24 Volt DC Steam Valve (valve provided)

HH-710 Speed Control Plus™ With Steam Valve Ship wt. 6 lbs.....\$995.00

HH-715 Speed Control Plus™ Without Steam Valve Ship wt. 6 lbs.....\$795.00

Filters & Bottlers

Inline Filter

- Strong 3 piece stainless steel construction
- Perforated stainless steel basket
- 1 1/2" inlet and outlet ports
- Pressure gauge included
- Uses micron-rated filter bag (not included)

**Use only with
pumps equipped
with a relief valve**



Our stainless steel Inline Filter is all you need to completely filter your honey! Strong 3 piece construction incorporates easy access to the perforated stainless steel basket and the filter bag. Filter measures 5" x 14". Engineered for use with honey pumps with a flow rate of 5 gpm. For the best results, honey temperatures must be at least 100° F. Filters are hand washable.

HH-375 Inline Filter *Ship wt. 23 lbs.*.....\$449.00

HH-376 Reusable Inline Filter Bag *Ship wt. 1 lb.*.....\$ 4.00

Mann Lake EZ-FILL

This AC/DC powered pump/filling machine is so versatile that you can use the same unit for pumping feed off the truck or in the honey house for bottling! Completely programmable, this unit will fill within 3 grams of the desired amount. Honey or syrup does not have to be hot to flow through the fill head and it can lift honey 13 vertical feet! The electronics are easily detached for convenient cleaning of the unit. This is a surprisingly powerful, compact unit that can even be used for speed seeding creamed honey. We don't call it EZ-Fill for nothing and the price is as easy on your wallet too!

PA-100 Mann Lake EZ-FILL *Ship wt. 41 lbs.*.....\$1,795.00



Stainless Steel Auto Rotating Table

The perfect addition to your EZ Fill Machine! The jars are placed on the stainless steel table top, which rotates moving the jars to the filler. A photo sensor stops the table and initiates the filling process. The filling amount is set with your filling machine (such as EZ Fill). When the jar is filled, the table moves again until the next jar is in position. The filled jars are then moved to the center of the table. The Programmable Logic Controller on the table can be programmed with 4 delays. This table works with the variety of containers but is best used with jars that are symmetrical in shape.

PA-150 Stainless Steel Auto Rotating Table.....\$2,695.00
Ships at 2 packages, one at 70 lbs. and one at 11 lbs.

- Diameter:** 27.5" (700 MM)
- Height:** Adjustable to 32.5" (830 MM)
- Rotation Speed:** Variable 2-18 RPM
- Power Supply:** 230V/110V with transformer 18 V AC
- Power Consumption:** 45 W
- Weight:** 58 lbs. (26 kg)



Filters & Bottlers

Stainless Steel Bottling Tanks



HH-396

12.5" x 19"



HH-385

6" x 19"

Our bottling tank acts as a big double-boiler providing safe heating for honey, wax and other sensitive products like soaps or syrups. This slow, indirect heating prevents discoloration when bottling honey and allows you to accurately control the temperature of melting wax, etc. Combine these great features with our drip-free bottling valve and you'll wonder why you didn't get one sooner! Optional filtering baskets are available for each size.

Our bottlers are complete and ready to use with heater, site gauge and bottling valve!

- HH-350** 16 Gallon/200 lb. Bottling Tank.....\$ 849.95
Ship wt. 70 lbs. oversize.
- HH-360** 30 Gallon/350 lb. Bottling Tank.....\$ 959.95
Ships truck, call for packaging & freight quote.
- HH-365** 55 Gallon/660 lb. Bottling Tank.....\$1,399.95
Ships truck, call for packaging & freight quote.
- HH-405** Optional Foot Petal.....\$ 29.95
Ship wt. 3 lbs.



See page 54

Bottling Unit Specifications

	HH-350 16 Gallon/200 lb.	HH-360 30 Gallon/350 lb.	HH-365 55 Gallon/660 lb.
Inside Dimensions	15" Wide 21 1/4" Deep	20" Wide 21" Deep	22 1/2" Wide 40" Deep
Outside Dimensions	17 1/4" Wide 28 1/2" High	22 1/4" Wide 28 1/2" High	25" Wide 45" High
Immersion Heater Size	1,500 Watt 110 Volt	1,500 Watt 110 Volt	3,000 Watt 220 Volt

All units feature: 20 gauge stainless steel can with a 1" water jacket. Sight glass, sight glass protectors, thermometer, immersion heater, drip valve, stainless steel lid and 1" no drip bottling valve are included with each unit.



HH-365



See page 54

Baskets, Filters & Filter Cloth

Save yourself a step! Filter and melt all in one process! In order to use a filter cloth, you must use a filter basket to hold it in place. To increase the filtration rate, use multiple baskets (up to 3 can be used together for maximum output).

- HH-385** Filter Basket (Fits HH-350 Bottling Tank) *Ship wt. 7 lbs.*.....\$69.95
- HH-390** Filter Cloth (Fits HH-350 Bottling Tank, HH-385 Basket) *Ship wt. 1 lb.*.....\$19.95
- HH-395** Filter Cloth (Fits HH-360 Bottling Tank, HH-396 Basket) *Ship wt. 1 lb.*.....\$18.95
- HH-396** Filter Basket (Fits HH-360 Bottling Tank) *Ship wt. 6 lbs.*.....\$79.95
- HH-560** Nylon Strainer Cloth per yard, 60" wide by 36" long *Ship wt. 1 lb.*.....\$ 6.95

Prices do not include shipping charges.

Pumps & Drum Gaskets



Honey & Syrup Pump

The gear pump has been designed specifically for pumping high viscosity liquids. This gear pump has a built-in relief valve with 1 1/2" ports. Pumps 6-8 gallons per minute at 1750 RPM with 90° honey. 3/4 HP motor, 110 volt. Complete electric unit comes with motor.

HD-470 Gear Pump Only *Ship wt. 25 lbs.....*\$ 845.00

HD-471 Pump with Motor *Ship wt. 52 lbs.....*\$1,145.00

HD-471

Progressive Cavity Pump

This progressive cavity pump can be shipped complete and features include a 2 1/2" outlet, 1 HP electric motor, 3 way sheave and a base for mounting. *Call for more details and a shipping quote.*

HD-455 Complete pump.....\$2,450.00

HD-456 PC Pump only.....\$1,830.00

HD-957 Reversing Drum Switch.....\$ 99.50



See page 54



HD-455

Brass Gear Pump

Our new Brass Gear Pump is perfect for the mid-sized beekeeping operation. Pumps 6-8 gallons per minute at 1750 RPM with 90° honey. Available with or without an overload.

This economical unit offers:

- 1" Inlet and outlet
- Pumps 6-8 gallons per minute at 1750 RPM
- Available with or without a 3/4 HP motor
- Available with or without an overload valve



HD-477

HD-458 Rotary Brass Gear Pump *Ship wt. 25 lbs.....*\$396.95

HD-459 Rotary Brass Gear Pump With Overload Valve *Ship wt. 28 lbs.....*\$449.95

HD-476 Rotary Brass Gear Pump With Motor *Ship wt. 54 lbs.....*\$749.95

HD-477 Rotary Brass Gear Pump With Motor & Overload Valve *Ship wt. 79 lbs.....*\$799.95

Drum Gasket



- We use polyester fiber strands, not cellulose, so there is no absorption of moisture
- Uniform and consistent fit
- No glue needed
- Reduces labor cost
- Packed in 150 ct. for easy handling
- Friction fit makes them easy to install



See page 54

Ship wt. 1 lb. per 5 gaskets.

Case of 150 gaskets Ship wt. 30 lbs.

CN-216 Drum Gaskets 1-449.....\$.58

450+.....\$.56

Heaters

Electric Immersion Heaters

Internal capillary tube.



- 1500 watt, 110 volt
 - Control temp. from 60°F to 240°F with set screw
- Ship wt. 5 lbs. each.*

HD-337 Heater 1500 watt 110 Volt.....\$129.95

HD-338 Heater 3000 watt 220 Volt.....\$189.95

Replacement elements also available - call for pricing.

Shielded Immersion Heater



NOTE: This unit is not designed for use with honey or bottling units.

- 1,000 watt syrup heater
 - Safe for use in plastic tanks and pails
- Ship wt. 2 lbs.*

HD-347 Shielded Immersion Heater...\$39.95

Bucket Heaters



110 Volt

- 110 Volt heats to 110°F
 - 6 ft. grounded cord and junction box
- Ship wt. 4 lbs.*

HD-358 Round Pail Heater.....\$99.95
Adjusts from 9 1/2" to 12"

HD-348 Square Pail Heater.....\$99.95
(non-adjustable)

Prices do not include shipping charges.

Drum Heater

Diameter 22 1/2" - 25"



- 3 heat settings range from 60°F-250°F
 - Liquifies honey or corn syrup
- Ship wt. 15 lbs.*

HD-350 AGM-55 Drum Heater 110 volt.....\$355.00

Briskheat® Drum Heater

This is the easiest to use, most cost effective drum heater we have ever offered! Simply wrap the amazingly thin band around the drum, attach the spring fastener, plug it in (110 volt) and set the attached thermostat. Thermostat adjusts from 50°F to 400°F. The heavy-duty 4" wide heater has nickel-iron heating elements insulated with fiberglass and laminated between two layers of silicone rubber-impregnated fiberglass cloth with dense grounding grids. 70" diameter, 6' power cord, moisture resistant, chemical resistant, spring closure expands 3" and 1200 watts. (Tip: for speed heating, use 2 heaters, place a piece of styrofoam under the drum and cover with a styrofoam box.) *Ship wt. 4 lbs.*

HD-355 Briskheat® Drum Heater.....\$235.00



Shown with 2 heaters.

Bulk Storage, Gates & Valves

Inside Dimensions: 18 1/2" Wide
31" Deep

Outside Dimensions: 19 1/4" Wide
32 1/2" High



HH-430

HH-186



Stainless Steel Storage Tanks

- 30 Gallon Storage Tank (without handles)
 - 26 gauge stainless steel
 - Holds up to 350 pounds of honey
 - 1 1/2" plastic honey gate
 - Stainless steel cover with knob
 - Economically priced
- Ship weight 70 lbs. oversize.*



See page 54

HH-430 30 Gallon Stainless Steel Storage Tank.....\$159.95

- 5 Gallon Storage Tank (with handles)
 - 26 gauge stainless steel
 - Holds up to 60 pounds of honey
 - 1 1/2" plastic honey gate
 - Stainless steel cover with knob
- Ship weight 30 lbs.*



See page 54

HH-186 5 Gallon Stainless Steel Storage Tank.....\$ 89.95

Honey or Syrup Storage Tank

Holds 275 gallons. Poly-ethylene construction and wire cage makes this honey tank virtually indestructible. 2" outlet with petcock enables easy operation. Comes on a pallet for quick and easy installation on your flat bed truck. *Ships by truck. Call for quote.*



See page 54



CN-500 Storage Tank.....\$295.00

Inside Dimensions: 12" Wide
18" Deep

Outside Dimensions: 12 3/4" Wide
19" High

Brass Bottling Valves

This Brass Bottling Valve features heavy duty brass teflon seats for drip free bottling and an extra wide flow through opening.

HH-410



HH-410 1" Brass Valve *Ship wt. 3 lbs...*\$109.95

HH-415 2" Brass Valve *Ship wt. 6 lbs...*\$199.95

Honey Gates



HH-600



HH-606

HH-600 2" Chromed Honey Gate.....\$39.95
Ship wt. 3 lbs.

HH-606 1 1/2" Plastic Honey Gate....\$ 9.95
Ship wt. 1 lb.

Syracuse Valves

Cast Iron Syracuse Valves screw into your tanks or drums for draining honey.

HH-635

HH-630

HH-625

HH-615

HH-610

HH-620



HH-610 3/4" Valve *Ship wt. 2 lbs.....*\$ 18.95

HH-615 1" Valve *Ship wt. 2 lbs.....*\$ 29.95

HH-620 1 1/2" Valve *Ship wt. 5 lbs.....*\$ 39.95

HH-625 2" Valve *Ship wt. 6 lbs.....*\$ 49.95

HH-630 3" Valve *Ship wt. 8 lbs.....*\$ 79.95

HH-635 4" Valve *Ship wt. 15 lbs.....*\$189.95

Material Handling Equipment

Barrel Trucks

Improve productivity with barrel trucks. Makes moving barrels of honey easy and safe. *Call for freight quote.*

MH-101 4 wheel barrel truck; 10" x 2 1/2" solid tires spring load chime hook.....\$449.95

MH-102 2 wheel barrel truck; 10" x 2 1/2" solid tires spring load chime hook.....\$369.95

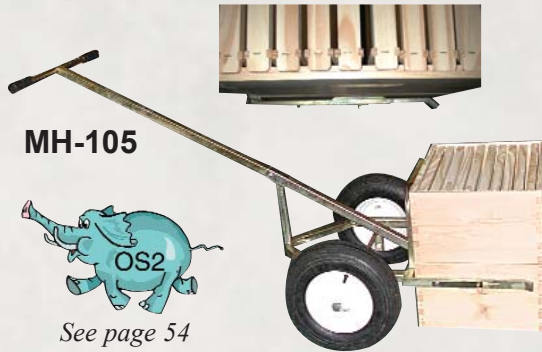
Prices do not include shipping charges.



See page 54

EZ Lift

With this ingenious steel hive truck, you can single-handedly move hundreds of pounds! By simply walking the cart into the first or second box of the colony, you can re-palletize, rotate boxes or move bees. The retractable hive catch slips easily into the hand holds for secure lifting and adjustments to lift deeps or shallows. Amazingly responsive, you can maneuver and adjust a colony with ease. *Ship wt. 59 lbs.*



MH-105

See page 54

MH-105 EZ-Lift Hive Truck.....\$299.99

Barrel Grip

This heavy duty gravity-actuated mechanical drum grip is primarily used for moving, stacking and palletizing. Manually adjusts to fit 30, 55, or 85 gallon over pack drums. Rubber-lined jaws are spring and cam actuated. The weight of the drum maintains a constant grip until it is set down. This unit is "fork-mounted" and can be easily attached to or unattached from the lift truck in seconds. Turnbuckle mechanism adjusts the jaws to handle cylindrical objects between 18" and 28" in diameter. Lift capacity is 1,500 lbs.

MH-106 Adjustable Barrel Grip.....\$659.95

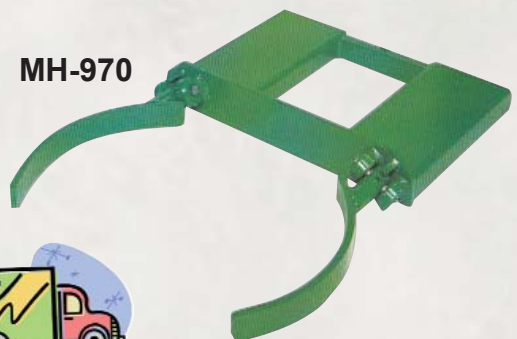


See page 54

Drum Snatcher

For use with your lift truck, this is our most economical drum mover. It is designed for those customers who have only limited drum handling needs. The Drum Snatcher should only be used on smooth transporting surfaces and with drums that have rings that are in excellent condition. To be used only with US standard sized 55 gallon drums. Lift capacity is 800 lbs.

MH-970 Drum Snatcher.....\$285.95



See page 54

Books

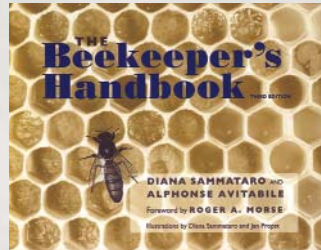
ABC and XYZ of Bee Culture



This A to Z classic in its 40th edition is the honeybee encyclopedia for any beekeeper regardless of experience. *Ship wt. 3 lbs.* Hard cover, 516 pages.

BM-100 ABC XYZ.....\$24.00

The Beekeeper's Handbook



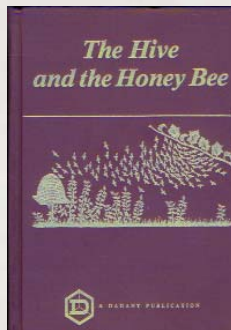
This 3rd edition is by Dr. Dianna Sammataro, honeybee researcher/beekeeper and Iphome Avitabile, retired honeybee scientist/college instructor. Whether

you're just setting up or reorganizing an apiary, this book will inform you of your options, advantages and disadvantages. *Ship wt. 2 lbs.* Soft cover, 190 pages.

BM-115 Beekeeper's Handbook.....\$29.95

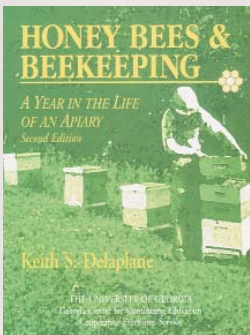
The Hive And The Honey Bee

This comprehensive text is a must for the reference library of any beekeeper, from the novice to the commercial apiarist. *Ship wt. 5 lbs.* Hard cover, 1324 pages.



BM-160 Hive & Honey Bee..\$36.00

Honeybees & Beekeeping (A Year in the Life of an Apiary)



This 2nd edition book and companion VHS series by Dr. Keith Delaplane from the U of GA, wonderfully complement each other or can be used alone. *Ship wt. 2 lbs. each.*

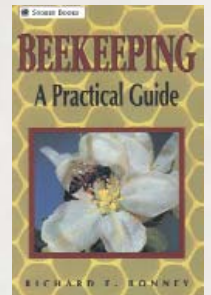
Video Set (4 hrs.)

BM-800 Honeybees Book\$12.95

BM-805 Honeybees Tapes\$59.95

Beekeeping A Practical Guide

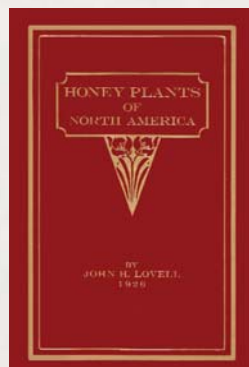
This is an excellent book for the beginner/novice beekeeper, written by Richard Bonney. The author discusses the hows and whys of hive management. *Ship wt. 1 lb.* Soft cover, 184 pages.



BM-790 Practical Guide.\$18.95

Honey Plants Of North America

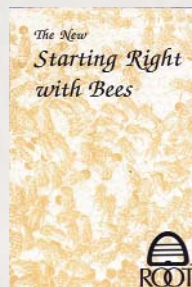
This classic text by John H. Lovell describes virtually every nectar and pollen source found in North America. This remains the most comprehensive text available, depicting how bees work different floral and pollen sources throughout the USA. Photos and illustrations are shown in black and white. Soft cover, 408 pages. *Ship wt. 2 lbs.*



BM-140 Honey Plants\$19.95

The New Starting Right With Bees

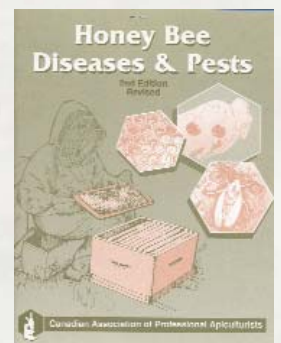
This book covers every aspect of introductory beekeeping and honeybee biology, published by the A.I. Root Co. Soft cover, 138 pages. *Ship wt. 1 lb.*



BM-150 Starting Right With Bees.....\$9.95

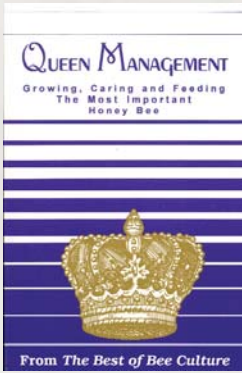
Honey Bee Diseases & Pests 2nd Edition

This is a terrific reference book for pests and diseases. Concisely written with full color photographs, this is an excellent diagnostic tool. Soft cover, 25 pages. *Ship wt. 1 lb.*



BM-125 Honey Bee Diseases & Pests.....\$6.95

Queen Management



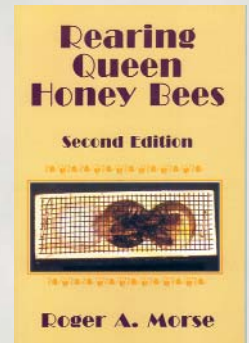
This book, published by A.I. Root, is a compilation of knowledge on the basics of queen management. Learn how to find, evaluate, raise and select better queens. Soft cover, 49 pages. *Ship wt. 1 lb.*

BM-145 Queen Management.....\$9.95

Rearing Queen Honey Bees 2nd Edition

Whether you are interested in raising a few or many queens, this book by Dr. Roger Morse is highly informative with step-by-step instruction. Soft cover 128 pages. *Ship wt. 1 lb.*

BM-200 Rearing Queen Honey Bees.....\$18.95



Queen Rearing And Bee Breeding



This book by Harry Laidlaw Jr. and Robert Page Jr. is written for beekeepers who know little about genetics and geneticists who know little about beekeeping. From the production of queen cells through selective breeding, this book covers a broad range of information.

Soft cover, 224 pages. *Ship wt. 2 lbs.*

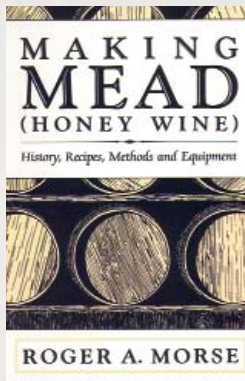
BM-331 Queen Rearing & Bee Breeding.....\$25.00

Making Mead (Honey Wine)

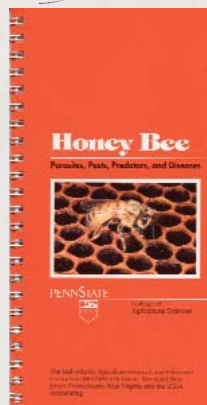
History, Recipes, Methods and Equipment

Dr. Roger Morse give us traditional and historical recipes for an age-old beverage in this thorough, how-to Mead making book. Soft cover, 127 pages. *Ship wt. 1 lb.*

BM-260 Making Mead..\$15.95



New! Honey Bee Parasites, Pests, Predators, and Diseases



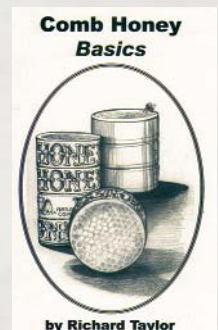
This handy pocket guide is designed to help identify symptoms of common bee maladies. The full color photos make diagnosing problems a much less confusing task. While not all new treatment methods are covered, the diagnostic help is invaluable. 85 pages. *Ship wt. 1 lb.*

BM-830 Honey Bee Parasites, Pests, Predators & Diseases.....\$12.95

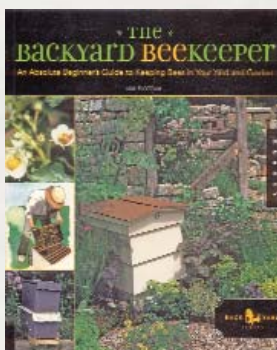
Comb Honey Basics

This booklet by Richard Taylor is excerpted from "Bee Talk" in Bee Culture, based on his simple management techniques of producing beautiful comb honey. Soft cover, 22 pages. *Ship wt. 1 lb.*

BM-785 Comb Honey Basics.....\$4.95



New!



The Backyard Beekeeper

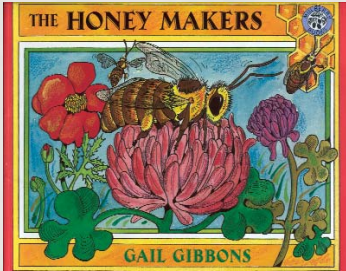
This is a great beginner's guide to beekeeping written in a fresh, easily readable style. Contains little tidbits that even longtime beekeepers may not know! Full color photos take you from bee behavior to the bee hive and then through the products of the hive with recipes and beeswax candle tips. Author Kim Flottum is the editor of Bee Culture magazine. 164 pages. *Ship wt. 2 lbs.*

BM-835 The Backyard Beekeeper.....\$19.99

Prices do not include shipping charges.

Books

The Honey Makers

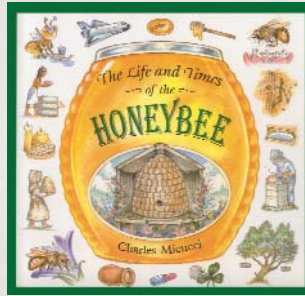


This modern beekeeping book by Gail Gibbons combines accurate, yet charming illustrations along with a simple, yet thorough informative text about what it takes to be a "Honey Maker" from

start to finish. Soft cover, 32 pages. *Ship wt. 1 lb.*

BM-163 The Honey Makers.....\$5.99

The Life & Times Of The Honey Bee



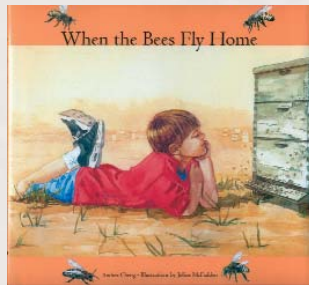
This is one for enquiring young minds written by Charles Micucci featuring his detailed full-color illustrations. This book presents a wide range of interesting facts about the life cycle of the

world's most useful insect. Soft cover, 32 pages. *Ship wt. 1 lb.*

BM-695 Life & Times of the Honey Bee....\$6.95

When the Bees Fly Home

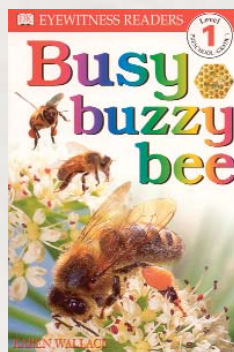
This touching story of a bee-keeping family by Andrea Cheng is about a family's struggle to make ends meet and a boy trying to find his special niche within the family dynamics. Bee facts buzz through this human story as we find that artistic and sensitive boys have their own special place. Features very expressive illustrations. Hard cover, 32 pages. *Ship wt. 2 lbs.*



BM-255 When the Bees Fly Home.....\$16.95

Busy Buzzy Bee Book

Stunning photographs combine with lively illustrations and an engaging story by Karen Wallace. Preschool to 1st grade. Soft cover, 32 pages. *Ship wt. 2 lbs.*

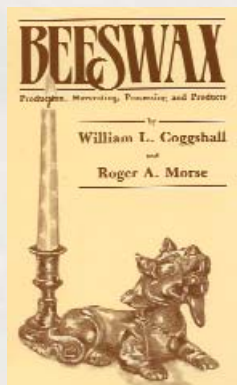


BM-164 Busy Buzzy Bee....\$3.99

Beeswax Production, Harvesting, Processing and Products

This book by Wm. Coggshall and Roger Morse offers a wealth of technical information about beeswax production, rendering, testing and grading as well as the products that can be derived from it. Soft cover, 192 pages. *Ship wt. 1 lb.*

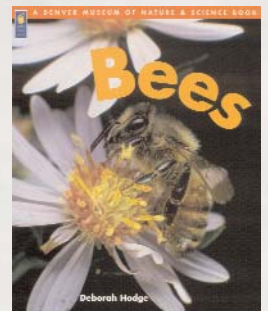
BM-330 Beeswax Production.....\$18.95



*24 hours per day,
7 days per week!
Secure online ordering at
www.mannlakeltd.com*

Bees

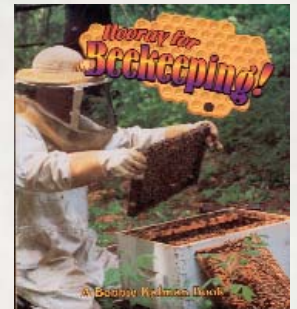
This combination educational and activity book by Deborah Hodge is chock full of color photos and illustrations. The fun bee related home activities will put a sparkle in the eye of your favorite youth. Soft cover, 32 pages. *Ship wt. 1 lb.*



BM-165 Bees.....\$5.95

Hooray For Beekeeping Book

This book by Bobbie Kalman covers all aspects of bees and beekeeping with the text supplemented by both illustrations and photography. Readers will get a great overview of beekeeping. Soft cover, 32 pages. *Ship wt. 2 lbs.*



BM-825 Hooray For Beekeeping!.....\$7.95

Gift Certificate

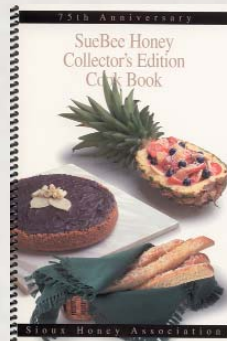
Are you looking for a gift for a beekeeper and don't know what to give? Give your favorite beekeeper a Gift Certificate and let them pick out the items they need most. Personalized Gift Certificates are available in any amount with a minimum of \$20.



Sue Bee Honey Collector's Edition Cookbook

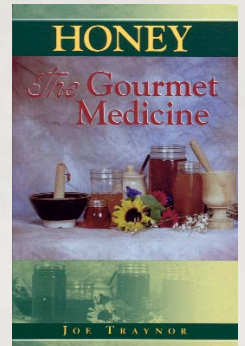
Spiral bound, soft cover with 54 pages of delicious honey recipes. Be sure to add this one to your collection. Soft cover, 54 pages. *Ship wt. 1 lb.*

BM-170 Sue Bee Cookbook.....\$5.95



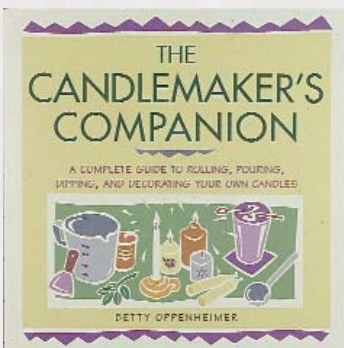
Honey The Gourmet Medicine

This intriguing book by Joe Traynor discusses the "hows" and "whys" of using honey as a medicine, both internally and externally. Citing numerous studies and supporting evidence, Traynor provides a valuable tool for professionals and laymen for healing ailments and living well. Soft cover, 105 pages. *Ship wt. 1 lb.*



BM-166 Gourmet Medicine.....\$9.95

The Candlemaker's Companion



From A to Z, this complete candlemaking guide by Betty Oppenheimer covers it all! Everything you wanted to know about additives, rolling, pouring, dipping and decorating is in this book, including a section on storing and repair. Detailed illustrations can be

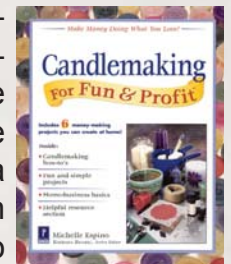
found on virtually every page. Soft cover, 199 pages. *Ship wt. 2 lbs.*

BM-130 Candlemaker's Companion.....\$18.95

Prices do not include shipping charges.

Candlemaking For Fun & Profit

For anyone who has contemplated a candlemaking business, this book by Michelle Espino will be an invaluable tool! Espino includes a detailed instructional section on candlemaking how-to's to make this a self-contained, complete resource for anyone thinking of a home-based craft business. Soft cover, 324 pages. *Ship wt. 3 lbs.*



BM-131 Candlemaking For Fun & Profit.....\$19.99

Bee Culture

THE MAGAZINE OF AMERICAN BEEKEEPING



Practical, down-to-earth, how-to articles, focusing on management, marketing, IPM, Association Improvement and much, much more.

Be A Better Beekeeper with Bee Culture.

Discover what thousands and thousands of American Beekeepers have found out. Bee Culture is the Best There Is. Period!

- BM-850** - 1-year subscription USA\$23.50
- BM-851** - 1-year subscription Canada.....\$38.50
- BM-860** - 2-year subscription USA \$44.00
- BM-861** - 2-year subscription Canada.....\$59.00

