











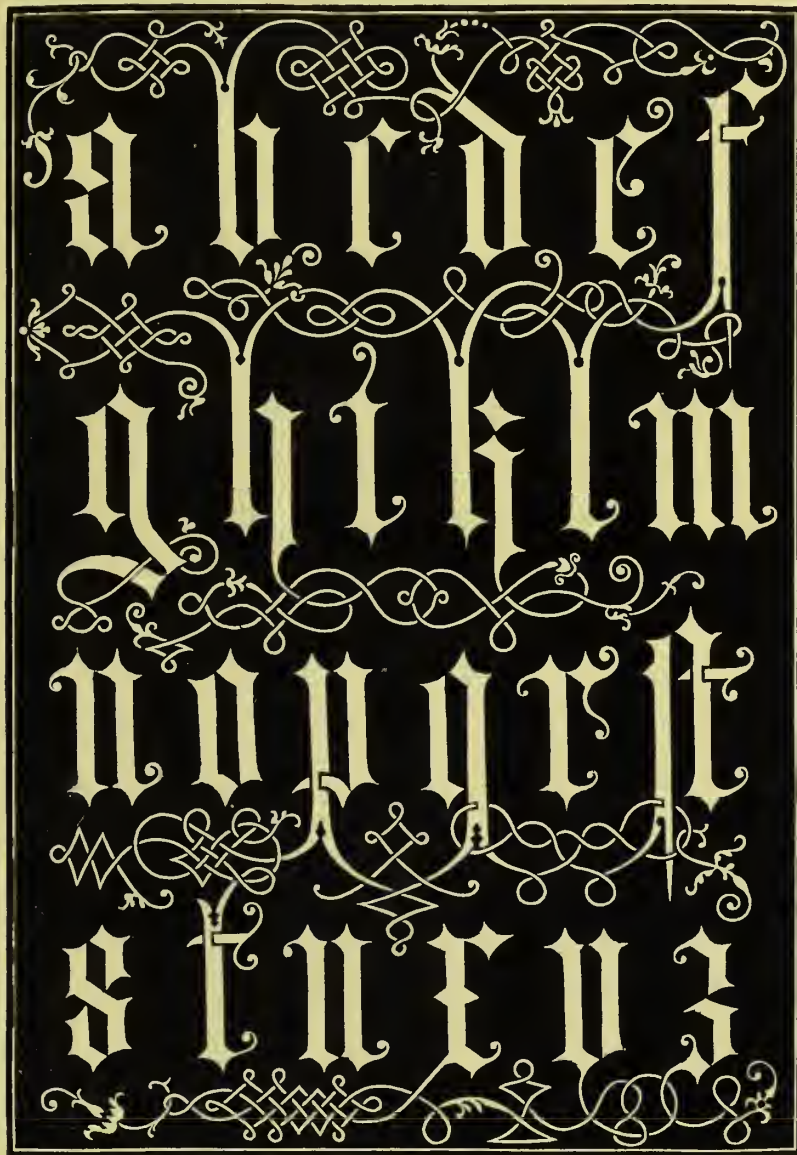


Digitized by the Internet Archive  
in 2014

<https://archive.org/details/alphabetsnumeral00shaw>



Alphabets Numerals & De-  
vices of the Middle Ages  
by Henry Shaw F. S. A.



London

WILLIAM PICKERING

1843





A A B C D O

E F G H I K L

M N O P O

R S T U V

W X Y Z Z

H I G I S T

M A N

THE UNIVERSITY OF CHICAGO

PHYSICS DEPARTMENT

PHYSICS 354

LECTURE 1

CLASSICAL MECHANICS

FROM THE WALL



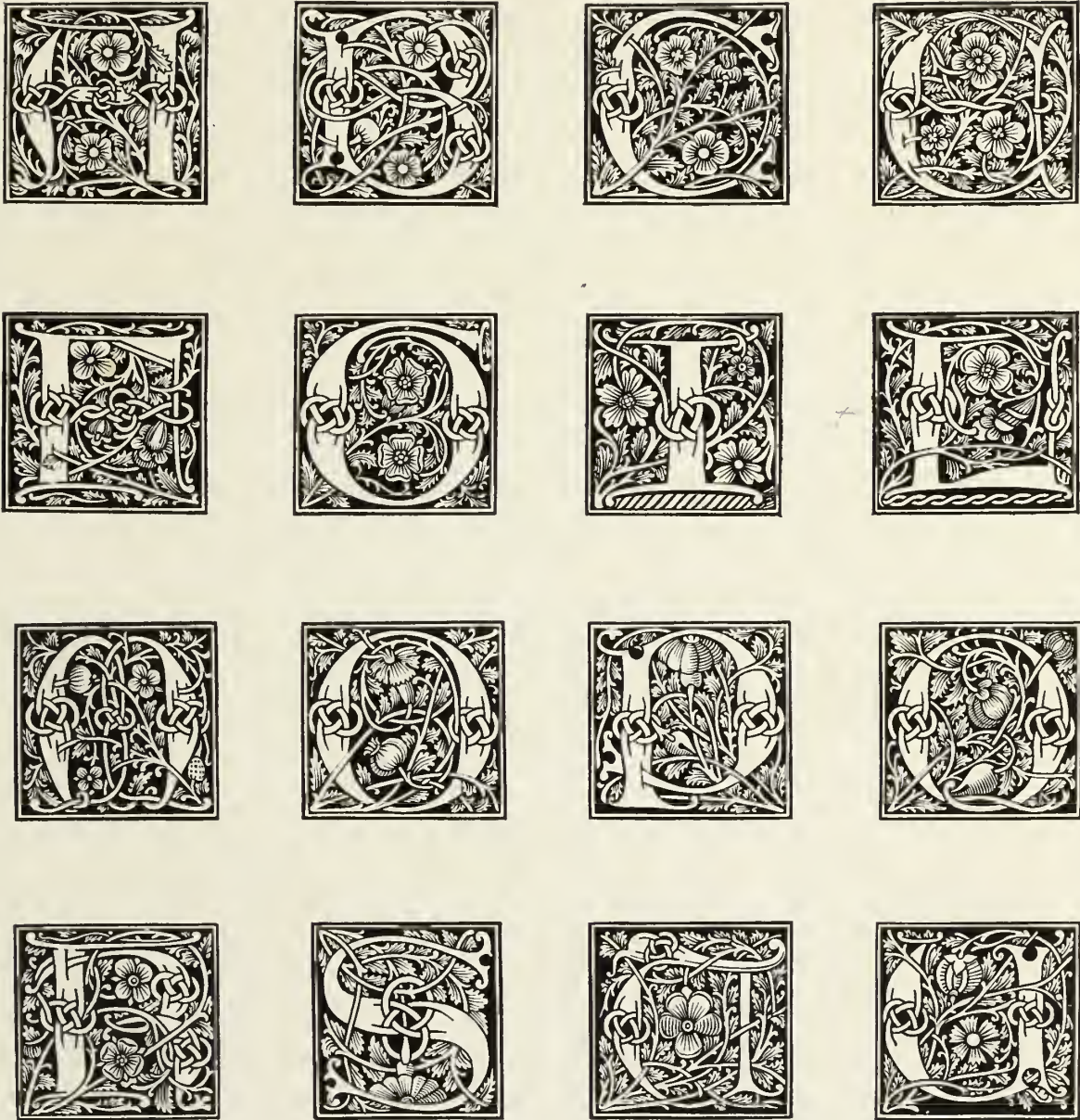
FROM THE WALL

in St. George's Chapel, Windsor

1850



Date, 1530.



FROM THE HYSTOIRE DE PERCEVAL LE GALLOYS.



Date, the beginning of the 16th Century.

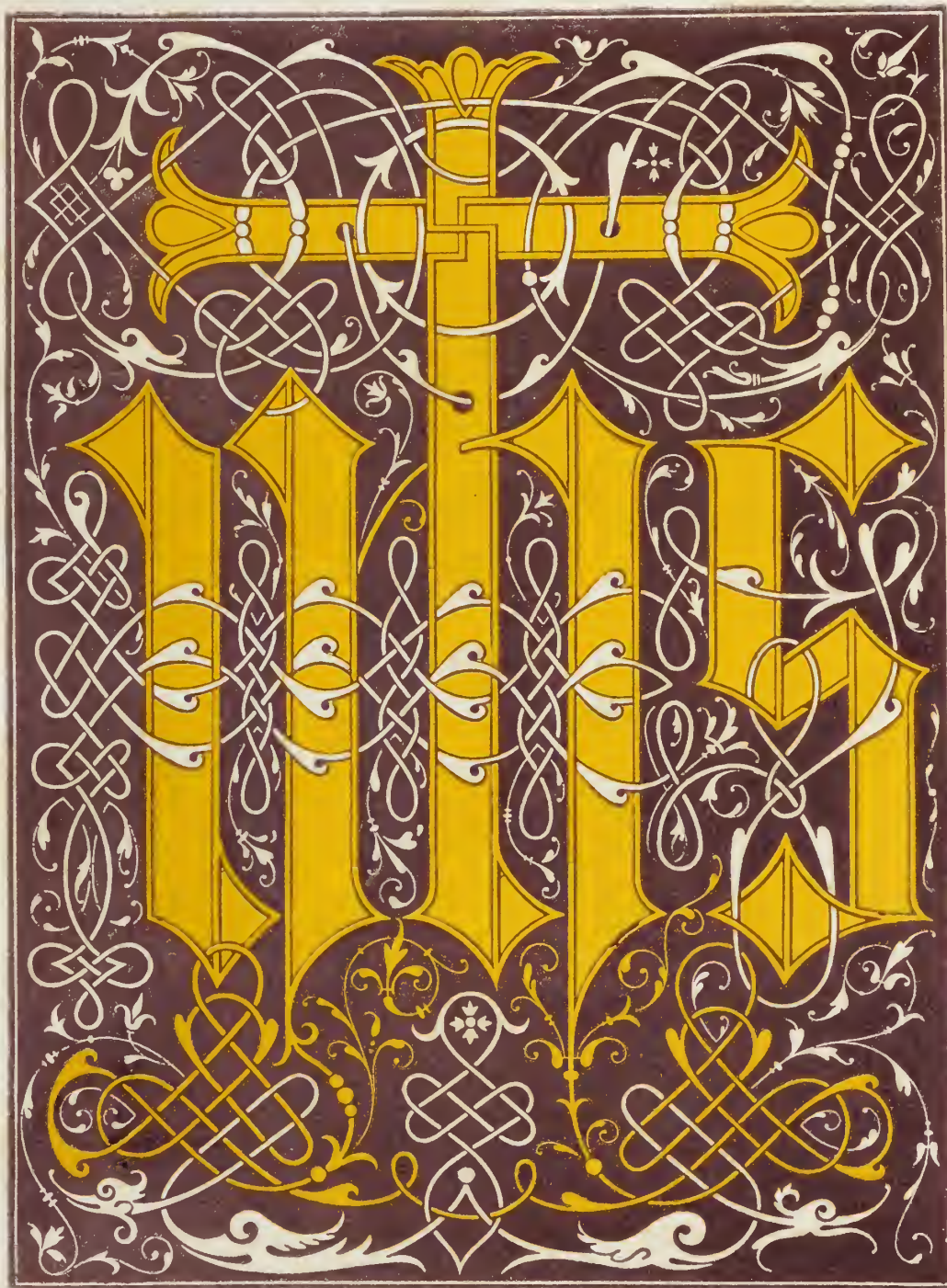


FROM WOOD CUTS.





Date, the beginning of the 16th Century.



FROM AN ENGRAVING ON WOOD.



Date, about 1480.



FROM A PONTIFCALE OF JOHN II. ARCHBISHOP OF TREVES.



A B C D E

F G H I K

L M N O P

Q R S T V

W X Y Z

ADAM DE WALSOKE



Date, the beginning of the 16th Century.



FROM AN ENGRAVING ON WOOD.





Date, about 1400.



FROM THE MONUMENT OF RICHARD II. IN WESTMINSTER ABBEY,  
AND OTHERS OF THE SAME DATE.



Date, about 1400.



FROM THE MONUMENT OF RICHARD II. AND OTHERS ABOUT THE SAME DATE, IN WESTMINSTER ABBEY.



PLATE THE FIRST OF THE ILLUSTRATIONS



PLATE THE SECOND OF THE ILLUSTRATIONS

DESIGNED BY THE AUTHOR



Date, 1085.

A B C D E E

F G h i k L

M N O P Q

R S T V X

† S T I R P S G V N D R A

FROM THE TOMB OF GUNDREDA, SISTER OF WILLIAM THE CONQUEROR,  
in Southover Church, Lewes.







LIB. 711

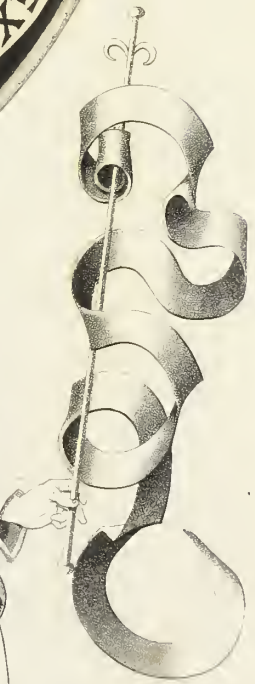
Encheiridion: 1811/1812





LABELS

From early German Prints.



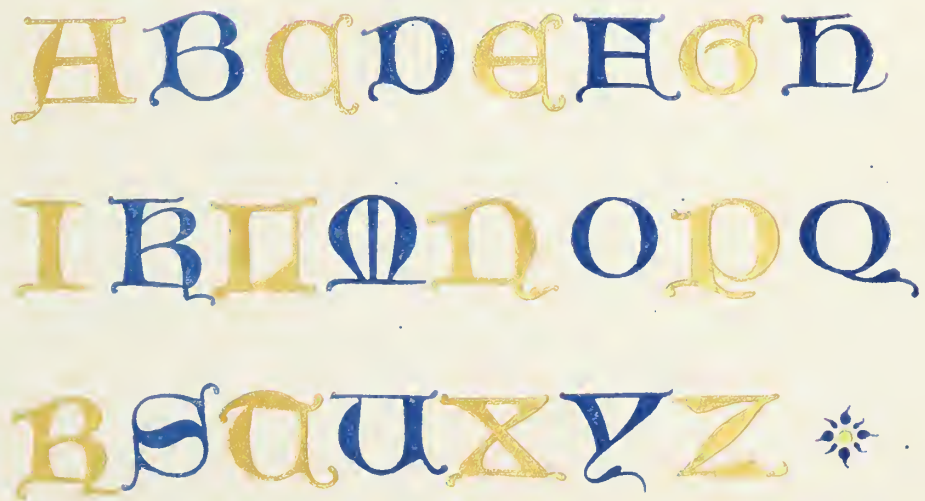


Date about 1480.



FROM A MS. AT ROUEN.

Date about 1480.



FROM A BENEDICIONALE IN THE POSSESSION OF THE  
REV. W. MASKELL.



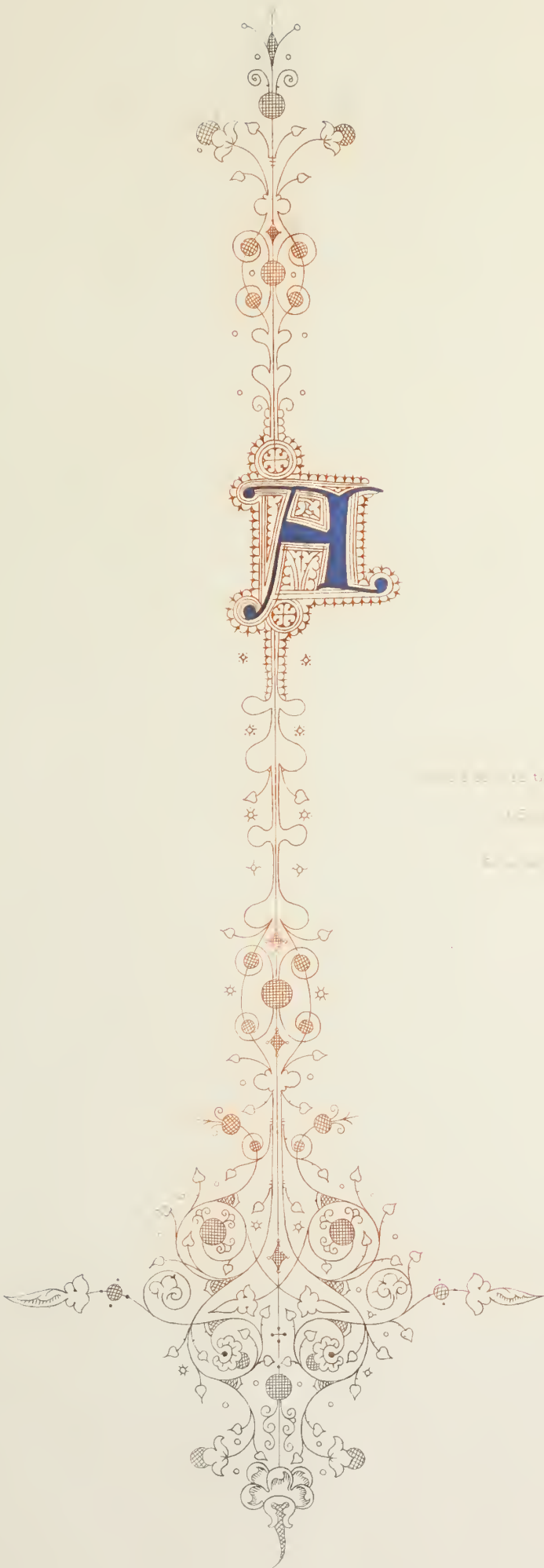
Date about 1470.



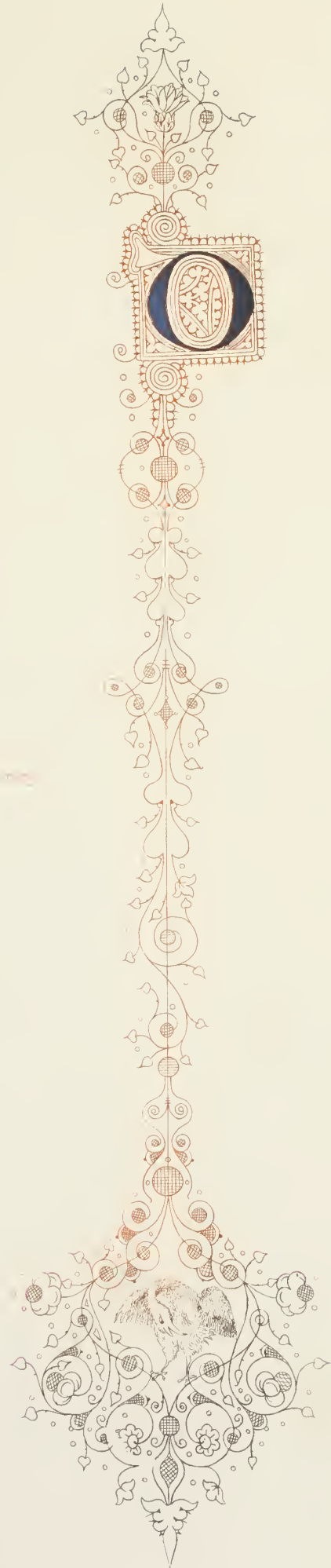
FROM LANSDOWNE MS. 451. IN THE BRITISH MUSEUM.







THE UNIVERSITY OF CHICAGO  
LIBRARY





Date about 1475.



FROM SUMMA BARTHOLOMÆI PISANI ORD. PRÆDIC. DE CASIBUS CONSCIENTIÆ.



Date about 1475.



FROM SUMMA BARTHOLOMÆI PISANI ORD. PRÆDIC. DE CASIBUS CONSCIENTIÆ.



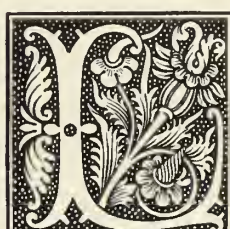


FROM FUST AND SCHEFFERS BIBLE.  
In the British Museum.





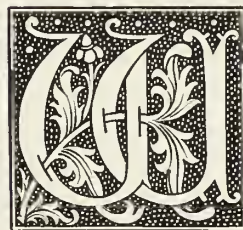
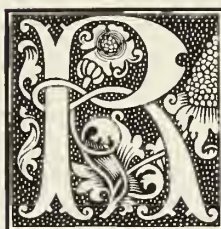
Date, the beginning of the 16th Century.



FROM A COPY OF THE ROMANT DE LA ROSE.



Date, the beginning of the 16th Century.

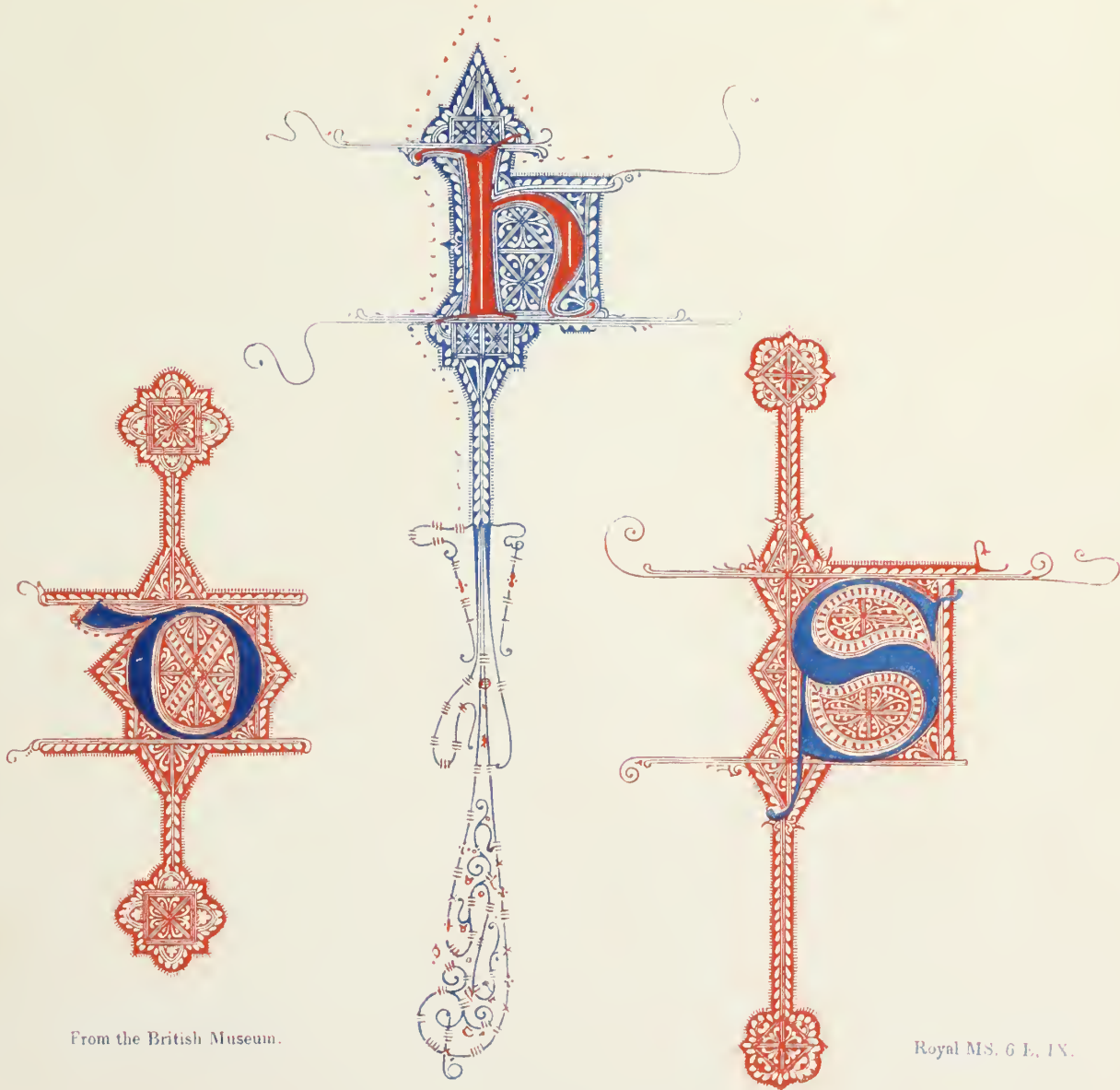
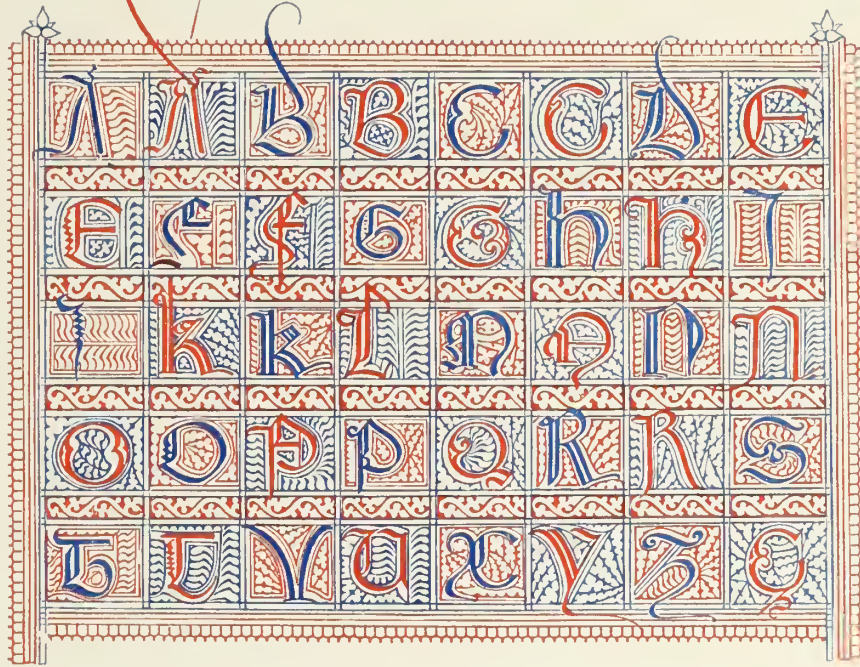


FROM A COPY OF THE ROMANT DE LA ROSE.



Date 1385.

From a MS. in the Hunterian Museum, Glasgow.



From the British Museum.

Royal MS. 6 E. 1 X.

Date about 1330.



Date, about 1480.

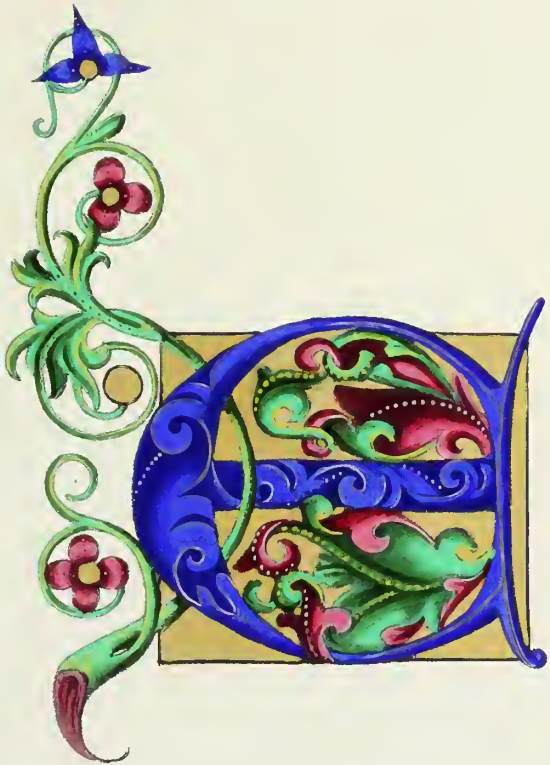


FROM A PONTIFCALE OF JOHN II. ARCHBISHOP OF TREVES.





Date 1462





Date 1462.



FROM FUST AND SCHOLFFOERS BIBLE.

In the British Museum.





FROM FUST AND SCHOFFOERS BIBLE.

In the British Museum.











FROM FUST AND SCHOFFERS BIBLE.

In the British Museum



Date, 1547.



RIBAND LETTERS.



Date, 1547.



RIBAND LETTERS.



Date, 1515.



FROM THE MISSALE TRAIJECTENSE.





Date, the 10th Century.



FROM THE BRITISH MUSEUM, ROYAL MS. I. E. VI.



Date the beginning of the 8th Century.

A A A A B C

D D E E F C

H I L M H O X

B Q R S X L

T U U X

A B C D E F G H I L H

M N O B C Q R S T U X

FROM A COPY OF ST. CUTHBERT'S GOSPELS IN THE BRITISH MUSEUM.



Date 1462.



FROM FUST AND SCHOLFFOERS BIBLE.

In the British Museum.



Date, 1515.



FROM THE MISSALE TRAIJECTENSE.

A B C D E F G H I  
K L M N O P Q R S  
T U V X Y Z

A B C D E F G H I J K L M  
N O P Q R S T U V X Y Z

ALPHABETS OF END OF THE FIFTEENTH CENTURY.





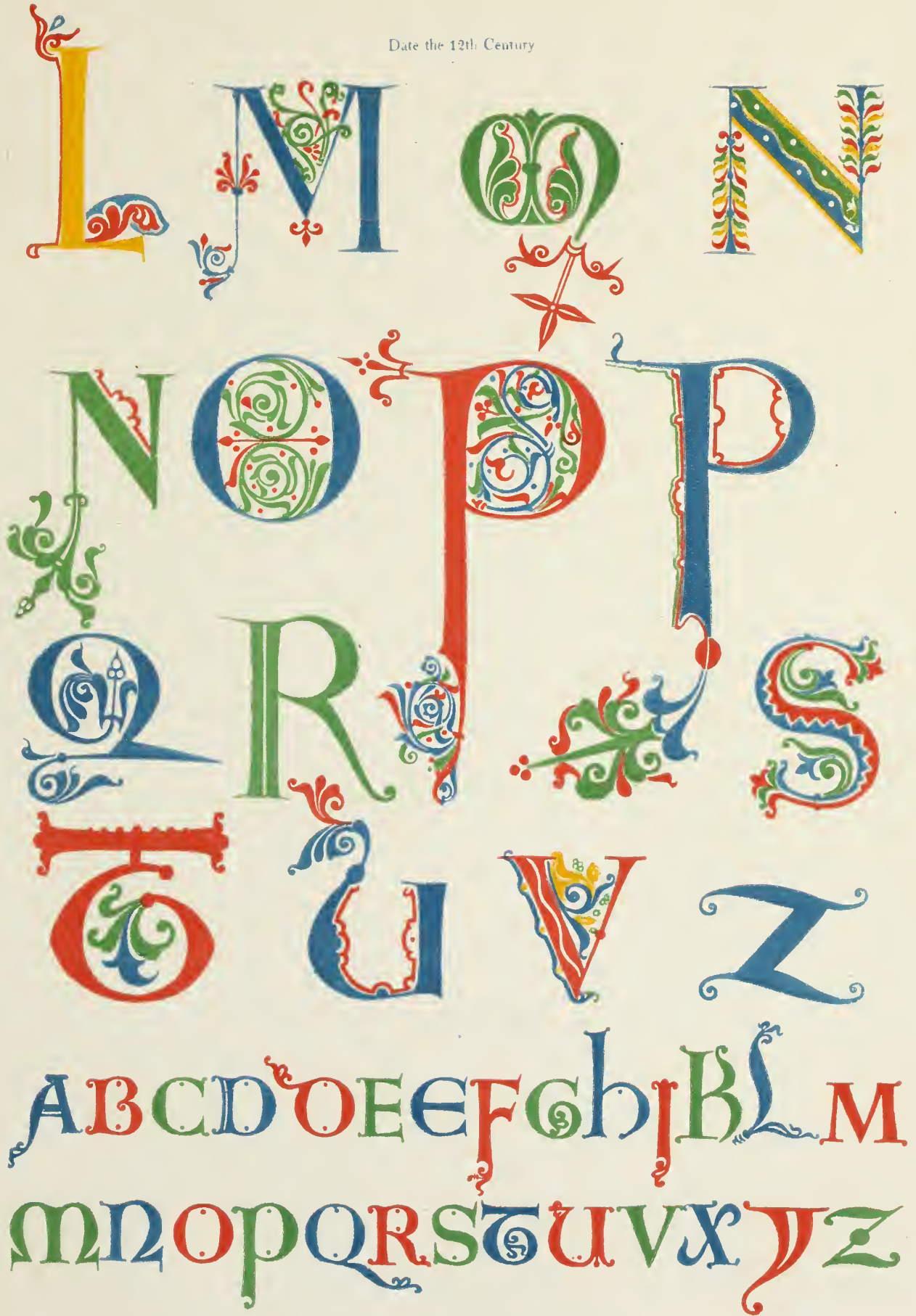
Date the 12th Century.



FROM THE BRITISH MUSEUM.  
Royal MS. I. C. VII, and others of the same date.



Date the 12th Century



FROM THE BRITISH MUSEUM  
Royal MS. I. C. VII and others of the same date.



Date 1515



From Lancelot du Lac



From Luis de Escobar,  
Las Quatro Cientas del Almirante 1550



Date 1516

MISSALE EBORACENSIS ECCLESIE.



















Special  
Folio  
92-B96 95

LIBRARY

