

THE  
**NATIONAL GEOGRAPHIC**  
**MAGAZINE**

---

CONTENTS

	PAGE
<b>THE PHILIPPINE ISLANDS AND THEIR ENVIRONMENT</b>	
With map.....	HON. JOHN BARRETT 1
<b>THE CAPE NOME GOLD DISTRICT</b>	
With map and illustrations.....	F. C. SCHRADER 15
<b>THE IDAHO AND MONTANA BOUNDARY LINE</b>	
With diagram and illustration.....	RICHARD U. GOODE 23
<b>THE COPPER RIVER DELTA.....</b>	E. D. PRESTON 29
<b>OUR NEW POSSESSIONS AND THE INTEREST THEY ARE EXCITING.....</b>	G. P. AUSTIN 32
<b>THE TOTAL ECLIPSE OF THE SUN, MAY 28, 1900.....</b>	F. H. SIGELOW 33
<b>THE CENSUS OF 1900.....</b>	F. H. WINES 34

Geographic Nomenclature, p. 36; Puerto Rico, not Porto Rico, p. 37; Geographic Literature, p. 38; Correspondence, p. 40

WASHINGTON

PUBLISHED BY THE NATIONAL GEOGRAPHIC SOCIETY

FOR SALE AT BRESTANO'S:

31 UNION SQUARE, NEW YORK; 1015 PENNSYLVANIA AVENUE, WASHINGTON;  
 218 WABASH AVENUE, CHICAGO; 37 AVENUE DE L'OPERA, PARIS

Price 25 Cents

\$2.50 a Year

THE  
**National Geographic Magazine**  
AN ILLUSTRATED MONTHLY

Editor: **JOHN HYDE,**

*Statistician of the U. S. Department of Agriculture*

**Associate Editors**

**GENERAL A. W. GIBBY,**  
*Chief Signal Officer, U. S. Army*

**W. J. MCGEE,**  
*Ethnologist in Charge, Bureau of  
American Ethnology*

**HENRY GANNETT,**  
*Chief Geographer, U. S. Geological  
Survey*

**C. HART MERRIAM,**  
*Chief of the Biological Survey, U. S.  
Department of Agriculture*

**DAVID J. HILL,**  
*Assistant Secretary of State*

**ELIZA RUHAMAH SCOTMORR,**  
*Author of "Java, the Garden of  
the East," etc.*

**MARCUS BAKER,**  
*U. S. Geological Survey*

**WILLIS L. MOORE,**  
*Chief of the Weather Bureau, U. S.  
Department of Agriculture*

**H. S. PRITCHETT,**  
*Superintendent of the U. S. Coast  
and Geodetic Survey*

**O. P. AUSTIN,**  
*Chief of the Bureau of Statistics,  
U. S. Treasury Department*

**CHARLES H. ALLEN,**  
*Assistant Secretary of the Navy*

**CARL LOUISE GARRISON,**  
*Principal of Phelps School, Wash-  
ington, D. C.*

---

**Assistant Editor: GILBERT H. GROSVENOR, Washington, D. C.**

---

The list of contributors to the NATIONAL GEOGRAPHIC MAGAZINE includes nearly every United States citizen whose name has become identified with Arctic exploration, the Bering Sea controversy, the Alaska and Venezuela boundary disputes, or the new commercial and political questions arising from the acquisition of the Philippines.

The following articles will appear in the Magazine within the next few months:

"Russia," by Professor Edwin A. Grosvenor of Amherst College, Massachusetts.

"The Venezuelan Boundary," by Mr Marcus Baker of the Venezuelan Commission.

"The Samoan Islands," by Mr Edwin Morgan, Secretary of the Samoan Commission.

"British South Africa and the Transvaal," by Col. P. F. Hilder, Bureau of American Ethnology.

"The Characteristics of the Filipinos," by Hon. Dem C. Worcester of the Philippine Commission.

"Explorations on the Yangtse-Kiang, China," by Mr Wm. Barclay Parsons, C. E., surveyor of the railway route through the Yangtse-Kiang Valley.

"Patagonia," by Mr J. B. Hatcher of Princeton University, who has passed the principal part of the last four years in the exploration of this little-known region.

The index for volume X, 1899, will accompany the February number.

THE  
NATIONAL GEOGRAPHIC MAGAZINE

VOL. XI

JANUARY, 1900

No. 1

THE PHILIPPINE ISLANDS AND THEIR ENVIRONMENT\*

By Hon. JOHN BARRETT,

*Late United States Minister to Siam*

In accepting the invitation of the National Geographic Society, I am not unmindful of the honor conferred or of the responsibility resting upon me to tell the truth about a portion of the world which has such an important bearing now upon our national welfare. It will be my simple purpose to consider within the limits of time at our disposal the Philippine Islands as seen and known by me in times both of peace and war, including such description of their environment or of neighboring countries as will best indicate the commercial and strategic value of their location. This discussion will be no effort at oratory or rhetoric, but an honest endeavor to tell you what I learned with unprejudiced eyes.

The invitation to speak under the distinguished auspices of the National Geographic Society suggested that the treatment of the subject should particularly include the material and geographical features of the Philippines and their environment. It would not be wise, therefore, to enter upon any extended argument of the moral problems involved in our occupation of the islands, although they are important, except inasmuch as they are interwoven with our political status in the Pacific, which in turn is closely associated with commercial and geographical considerations.

During five years' residence in the far East, four of which it was my honor to be the United States minister to Siam, it was also my privilege to travel not only well over Siam, which today is making more progress than any other Asiatic land except Japan, but also, in

\* A lecture delivered before the National Geographic Society, December 2, 1899.

greater or less degree, through China, Korea, Siberia, and Japan on the north and Burma, the Malay Peninsula, Cambodia, Java, Borneo, and the Philippines on the south, going first to the latter without any thought of their ever coming under the American flag.

An extended trip through the Philippines some years ago, in times of peace, and a protracted stay again later, in times of war and insurrection, from May, 1898, to April, 1899, will, I trust, enable me to bring forward a few facts that will be of interest.

#### IMPORTANCE OF LOCATION

First let us consider the location of the Philippines and of Manila. The great importance of this point is too often overlooked in the discussion of the islands, though nothing can have a more direct bearing on their practical value to the United States. We have often thought of the Philippines in a general way with reference to the far East, and we perhaps have read extensively about their resources, physical characteristics, and people, but we have not given sufficient attention to the remarkable position which they occupy in relation to other lands.

The map of trans-Pacific countries is a most fascinating study. What it reveals is a series of impressive facts. From Melbourne, in Australia, on the south, to Vladivostok, on the north, is a magnificent coast line which reaches away for eight or nine thousand miles, and upon which debouch over five hundred millions of people. Without consulting the map, we do not always remember how closely connected Australia is with the continent of Asia. This coast line, of which the Philippines are one of the chief outposts, is only broken here and there by very narrow straits, while everywhere it is indented with harbors and bays, upon which, especially in Asia, there are located great cities or commercial entrepôts. As we travel up and down from Australia to Japan we find that the Philippines are the very ideal center of all these lands that face the Pacific. The more one studies the far East the more is he impressed with the importance of this location with reference particularly to control of the commerce and politics of the future. Already the foreign trade of Asia, the East Indies, and Australasia amounts to the grand total of two billion dollars, of which the United States at the present time has a small proportion. That trade, although large in itself, is small in view of the total population of that part of the world, and is yet in the infancy of its development and possibilities. If it is two billion dollars now, it will surely go on within the near future to three or four bil-

lion dollars, of which America should eventually have the controlling share if she will hold the great advantage which she now possesses by the occupation of the Philippines, where she can have a distributing and receiving point to come in close contact with these millions of people and of commerce.

I contend that Manila occupies a position of immeasurable opportunity in comparison with the other great ports or cities of the Asian and Australian coast line. That you may obtain a concrete idea of what I mean, let me picture how Manila stands with reference to neighboring points. Let us draw a circle on a radius of two thousand miles, with Manila as the center. As we swing it around we find that this charmed circle takes in such distantly separated points as Yokohama, Vladivostok, and Tientsin on the north and Port Darwin, in Australia, and Batavia, in Java, on the south. It reaches east to include Guam and the Carolines and west to include Bangkok, in Siam, and Rangoon, in Burma. A similar circle drawn around any other port does not include so many important points. I would not imply that Manila will ever take the place of Hongkong, Shanghai, or Singapore, or even equal them in the race for commercial and political supremacy, because they already have a wonderful start; but there is abundant reason why Manila should become a great trade center to divide their business, and at least be the chief point through which America shall carry on her growing transactions with Asia's millions. It must be remembered that we have only recently entered this vast arena with any prospects of being the chief factor in trade. When we fully realize and improve our opportunities, then we should build up a great American city at Manila as the English have prosperous ports at Hongkong and Singapore, the Dutch at Batavia, and the French at Saigon.

Manila Bay opens on the South China Sea, which is teeming with the commerce of the Orient as the Great Lakes of America are busy with the trade of our interior. But more than that, there pass up and down through this sea, within hail as it were of Manila, the mighty fleet of ocean craft that crowd through the Suez Canal and pass Singapore to and from Europe and the far East. Formerly these vessels never thought of stopping at Manila or having regular connections. It was always Spain's policy to keep the Philippines in the background. They were enshrouded in mystery; and even at Hongkong, only 630 miles away, with her great trade of \$250,000,000 per annum, there was no just appreciation of the opportunities in the Philippines.

The growing fleet of merchant vessels that ply between China and Australia are finding that Manila is on their direct route and are already stopping, both coming and going. The time must soon come when the majority of the steamers that cross the Pacific from our own shores will make Manila their terminal point instead of Hongkong, or provide themselves with the best of connections. Then there are unlimited possibilities for the development of coasting trade, with Manila as the base and Yokohama, Kobe, Port Arthur, Chifu, Shanghai, Amoy, Hongkong, Saigon, Bangkok, Singapore, Batavia, Port Darwin, and Sydney as objective points.

#### VAST NEIGHBORING OPPORTUNITIES

Moreover, in all the attention that we have been giving in recent years to Japan and China, we have overlooked the mighty opportunities of southern Asia and of the rich East Indian Archipelago, which in turn rests, as it were, upon growing Australia. Every one knows what a great future awaits the latter country. Just north of it, and near neighbors to the Philippines, are such countries, undeveloped, but possessing splendid resources, as Papua or New Guinea, Borneo, and Sumatra, any one of which is larger than Texas and California combined, and yet containing a very small population. They may be intended by a wise Providence for the overflow that must come some day from the continent of Asia. Only fifteen hundred miles to the southwest of Manila, and just below Borneo, is Java, commonly called the Garden of the East, where the Dutch have worked wonders. A more peaceful and prosperous land, taken as a whole, cannot be found in the wide world. This island, of the same area as Luzon, and yet not so resourceful, supports a population of over twenty millions and has a foreign trade that amounts to \$200,000,000 per annum. How few people in America realize that Java is covered with a network of railways and has large, prosperous cities, whose harbors are frequented by the merchant vessels of all lands. Here we have a lesson as to the possibilities before us in the Philippines.

The occasional insurrections that occur in certain parts of Java and Sumatra are tolerated or allowed by the Dutch largely for the purpose of having a reason for maintaining an army and navy. It is a well-known fact in the Orient that Holland could end all possibilities of local wars there if the officers of her army and navy were so inclined.

Only 1,300 miles southwest from Manila is Singapore, Britain's proud gateway to the Orient, which has an annual commerce of

\$180,000,000. Just north of Singapore are the protected Malay states, which again prove to us what we can do in the Philippines with the natives when we once establish peace, order, and good government. The Filipinos are a branch of the Malay race and closely akin to the people living in the Malay Peninsula, as well as to those in Java.

A little farther to the north, at the head of the Gulf of Siam, is Bangkok, the prosperous capital of the progressive kingdom of Siam. This is one of the unknown lands of the world, but yet one of the most interesting and resourceful. With a population of eight millions, it already has a foreign trade of \$25,000,000, which will soon grow to five times that amount. With a king who now ranks as one of the ablest statesmen of all Asia, and with material improvements and political reforms being made throughout his entire domain, Siam has a brilliant future before her.

Just across the South China Sea and east of Siam are the French possessions of Cambodia, Annam, and Tonkin, where even the French, who are not generally regarded as successful colonists, have established peace and prosperity among twenty millions of people and developed a foreign trade, despite their "closed door" methods, of \$50,000,000 per annum. Its capital, Saigon, is a beautiful city—a little Paris in the Orient.

#### CHINA'S GREAT FIELD

Having now noted the importance of the environment of the Philippines on the south and west, which means so much for the future prosperity of the islands, in the same way that the prosperity of any American city or state depends largely on the surrounding states and cities, their population and resources, let us now look to the north. The distance from the Philippine coast to China on the northwest is only six hundred miles. Formosa is barely more than four hundred miles away, and has in itself a great material future from which Japan hopes to reap a decided benefit.

Hongkong, which has always been the chief point of approach to the Philippines and is only six hundred and thirty miles from Manila, is a monument to British enterprise. Its annual trade exchange is now passing the \$250,000,000 mark. The day I left there to return to America I counted over 60 merchant vessels loading and unloading in her harbor. We stand now looking upon the great empire of China, which affords America the most tempting field of trade expansion yet undeveloped in the world. Here is a vast land of four

million square miles, greater than all the United States, with a population commonly estimated at 350,000,000, or five times that of the United States, and which has only 350 miles of railways. This one point, to me, is a complete description in itself of her possibilities. It is difficult to imagine the extent of the material development that must follow the early construction of extensive trunk and branch lines of railway. There is crying need now for 25,000 miles of railroads, which means a safe investment, including what goes with such construction, of \$500,000,000.

To impress upon you further China's possibilities, let us look at what may be the limits of her trade when once she has a good government established and her interior is opened up. We will obtain our conclusions by comparison with Japan. Japan, which under ordinary conditions would not have a greater buying and selling capacity than China, has built up in twenty years a foreign trade from \$30,000,000 to \$240,000,000. The present population of Japan is forty millions, giving a trade of \$6 *per capita*. Now, let us apply that rate of \$6 to a most conservative estimate of China's population, two hundred and fifty million, and we have a possible annual trade of \$1,500,000,000. If you divide this in half for the imports, you have \$750,000,000. If you look over the list of Chinese imports, you will find that two-thirds of them can be supplied by the United States if she will enter into earnest competition with other countries. Already we have shown what we can do by developing in northern China within a few years an annual trade of \$10,000,000 in manufactured cotton goods, and in southern China of \$6,000,000 in flour. In both lines our sales were inconsiderable ten years ago.

If any one says that China has not a great buying and selling capacity when she is opened up, he must remember the experience of the Yangtze Valley. Some forty years ago one or two ships and \$500,000 represented the trade of that mighty stream. Today you can go up the Yangtze 600 miles, from Shanghai to Hankow, in finer steamers than those plying between New York and Albany, and the annual trade of the river is estimated at nearly \$75,000,000. From this you can conceive what must come when the vast interior sections of China are covered with railways, and the same development follows that has characterized the Yangtze River. It is not discouraging that Chinese trade is now only \$250,000,000 a year, or \$1 per head. It rather shows what great opportunities remain yet to be



developed by the United States and other lands. That same argument might have been advanced against Japan twenty years ago.

In the limits of time at my disposal I cannot discuss Japan specifically beyond saying that there never was a time in the history of our relations when we were closer to that country in commerce and trade than now. Korea is just opening to us, and is providing fields of exploitation which we must not neglect. In Russian territory to the north there are also opportunities which we must fully realize in considering the value of Oriental trade. Already we are doing much there which is encouraging for the future.

Before closing my references to China I cannot refrain from emphasizing the importance of our government's efforts to maintain the "open door" of trade and preserve the integrity of the Chinese Empire. The "open door" simply means that we shall have the same rights of commerce throughout all China as are possessed by any other country and as guaranteed by the treaties. We have everything to lose and nothing to gain by the division of the Chinese Empire. Now, we can look forward to controlling the larger portion of her trade in successful competition with other nations; but if China is divided or the door is closed, whatever country has the predominant influence in a certain portion of China will establish such regulations, directly or indirectly, as will prevent our exports from competing successfully with its own.

#### MATERIAL VALUE OF PHILIPPINES

Now, what shall we say of the Philippines themselves in their material aspects? We have already shown their geographical, strategical, and commercial relations to the rest of the Orient. Under depressing Spanish influences there was developed in the Philippines an annual trade of \$33,000,000. Under American control and with American enterprise and capital this surely must be enlarged within the next ten years to \$150,000,000. If the British, Dutch, French, and other nationalities have been successful in accomplishing the results already shown in dependencies less resourceful than the Philippines, it is a confession of weakness if we cannot outstrip them in this work. The Philippines are blessed with an unusual number of great staple products, of whose possibilities I took careful note as I traveled through the islands. Chief among these are hemp, tobacco, sugar, copra or the dried meat of the cocoanut, and rice. The raising of and the trade in these staples have been developed to their present

status with practically the same methods and conditions as existed many years ago. New methods and additional capital will quadruple the output and bring so much more wealth to the country. The lesser products of the country include coffee, cocoa, coconut, vanilla, pepper and other spices, indigo, and a great variety of fruits characteristic of the tropics. There are sections where Indian corn thrives, while strawberries and blackberries have been grown with success in the northern plateaux. There are, of course, many other products of the soil, but here I am only calling attention to the principal ones which attracted my eye in passing. The tobacco is grown in the northern section of Luzon, in the valley of the Cagayan River; rice in the provinces between Manila and Dagupan, in the center of Luzon, and hemp in the southeastern portion of Luzon. In the Visayan Islands, as well as in parts of Mindanao, sugar is the chief product, while the pearls that please the vain world come from the Sulu group. Thus it will be seen that the products of the islands are well distributed throughout their entire extent.

The wealth in minerals and metals is not fully known yet, but there are sufficient indications to enable us to conclude that their resources in these lines will be worth careful development. There are numerous outcroppings of coal and iron ore, with indications of copper, lead ore, tin, and platinum; also there are found sulphur, mercury, alabaster, jasper, and marble. The more precious product of gold undoubtedly exists in paying quantities, while there are some favorable signs of silver.

On the extensive ranges of mountains in Luzon and in Mindoro and Mindanao are to be found forests of most valuable woods. The variety is surprising. It includes everything from soft palm and bamboo to ebony and ironwood. There is abundant material on the one hand for furniture and cabinets, and on the other for ship-building and heavy house construction.

#### LAND CONFORMATION AND AREA

As I traveled from Aparri, on the north end of Luzon, south through that island, thence through the Visayan group, then to Zamboanga, in Mindanao, I was impressed everywhere by the marvelous intermingling of well-watered, extensive valleys with broad, fertile plateaux and high forested mountains. The conformation of the land impresses the traveler as being suited not only for unlimited cultivation, but for the support of a great population. The number of rivers and lakes

navigable for small craft during a good part of the year is large. No other group of islands in the world possesses so many harbors and bays suited for inter-island traffic. The separation of the group into many islands has a most distinct advantage, which we do not fully appreciate. It provides highways of water, which are always there, and permits frequent and easy communication with all important points. The Philippines are more valuable to us divided as they are than if they were one broad extent like Borneo. This breaking up will also be of great assistance in preventing serious insurrections in the future.

The area of the Philippine Islands, 115,000 square miles, according to the best surveys, is more fully appreciated when we say that it is approximately equal to the six New England States and New York. Luzon would cover the State of New York, while Mindanao would hide the State of Maine. The Visayan Islands, with Palawan, Mindoro, and the Sulu group, would equal Vermont, New Hampshire, Rhode Island, Massachusetts, and Connecticut.

As the possibilities of railway construction showed what may take place in China, so likewise do they teach us the extent of the field of development in the Philippines. In this area of 115,000 square miles, with a population of eight millions, there are only 135 miles of railway, or between Manila and Dagupan. According to the best European experts who have traveled through the islands, there is immediate need for the building of from 1,000 to 1,500 miles of railway, a safe investment, including accessories, of from \$50,000,000 to \$75,000,000. For instance, the great Cagayan Valley of Luzon should be tapped by a line from Manila, while other roads could be built in various directions where there are freight and people to carry. Down in Mindanao are valleys as large as the State of Connecticut which can only be developed properly by the construction of railways. A score of similar opportunities could be named on a greater or less scale.

#### CONDITIONS OF CLIMATE

As to the climate, it can be said that the dangers of the tropics are grossly exaggerated by those unfamiliar with them. After a residence of five years in the very heart of the tropics, I will say that men can keep well and vigorous there if they exercise ordinary moderation and care and absent themselves at reasonable periods in northern climes for rest and change, as men do in our American cities during the heat of summer. The Philippines contain most favorable conditions for offsetting the disadvantages of more tropical location. At various

points up and down the entire length of the islands are lofty mountains, on the higher slopes of which one can reach at any time of the year an atmosphere that is practically temperate and always most refreshing and invigorating. Within near distance of Manila are mountains which can be utilized for hotels and barracks, which our government officials, officers, and soldiers can seek for change and rest during the brief period which is oppressively hot. As soon as means of communication are established between Manila and such points, it will be surprising to witness the effect upon the foreign inhabitants. What an army experiences in the severe tests of warfare in the tropics is not a just measure of the conditions of ordinary life. No one, I think, would contend that the Philippines are an ideal home for the American laborer, but they afford broad opportunities for men who occupy managing or directing positions. The natives and the Chinese will provide the ordinary day laborer in abundance.

#### THE PEOPLE OF THE ISLANDS

Of the people who inhabit the Philippine Islands I can say, after extended acquaintance with them, that their good qualities far outweigh their bad qualities. When they are not misled or misguided by ambitious leaders in regard to America and the American people, they will become peaceful subjects of our government. When once order is fully established, there will be little or no spirit of insurrection manifesting itself, except where now and then, as in any land, some headstrong, unscrupulous leader may endeavor to resist the government. The majority of the Filipinos are far above the level of savages or barbarians and possess a considerable degree of civilization. It is the small minority that are wild and untamed in life, habits, and system of government. It is my honest opinion that we shall be able to develop there a large degree of autonomy in the interior provinces and towns, and gradually from year to year make the islands approach nearer and nearer to a condition of self-government something like that of Canada or Australia. It may take a considerable period of years, but the people are naturally quick to learn, and among them there are undoubtedly many able men to hold the more responsible posts.

Too much credit cannot be given the Philippine Commission appointed by President McKinley, consisting of President Schurman, Admiral Dewey, General Otis, Colonel Denby, and Dr Worcester, for

their labors and for the wisdom of their report. If the methods they recommend are followed closely, there is little doubt that the ends desired will soon be accomplished.

AGUINALDO AND HIS POWER

Of Aguinaldo I can say that he is undoubtedly a man of much executive capacity. He has also a degree of personal magnetism, mingled with sufficient persistency, energy, and shrewdness to be a successful leader of his people. He does not, however, impress one as possessing stability of character. It is difficult, in conversing with him, to catch and hold his eye. His glance could be called shifting. He dresses with remarkable taste and neatness, and makes a favorable impression on those who meet him, but he does not inspire confidence among foreigners. Were temptations to personal power removed from him, I believe that he would be a greater influence for good than for wrong, but under ordinary circumstances his personal ambition controls his motives and methods. Having known him first at Hongkong, before he returned to the Philippines, and later at Cavite, Baker, and Malolos, I speak from extended acquaintance, in which I was able to note carefully his characteristics. Having been familiar with what passed between him and Admiral Dewey, and having discussed the matter repeatedly with both of them, I can say, in utmost frankness and honesty, that Admiral Dewey never, by written or spoken word, gave Aguinaldo any assurances whatsoever of independence. He simply and only treated him as a friend fighting a common enemy. Aguinaldo, however, with natural shrewdness, saw the opportunity to impress upon his people the fact that he was supported by the American Government, and so told them; otherwise it would have been difficult to secure their general support in forming a government and in mobilizing an army. This fact was often impressed upon me by the Filipino leaders who were not entirely in sympathy with Aguinaldo, but understood his methods and plans.

When men declare that we are shooting independence into the Filipinos, or are establishing a government without the consent of the governed, they must bear in mind, first, that Aguinaldo's government was established almost entirely by the use or show of force, in that he organized an army at Cavite and then sent garrisons to all important points, from Aparri on the north to Zamboanga on the south, everywhere impressing the people, who had no modern arms, with his strength and compelling them to acknowledge his authority;

second, that never have one-fourth of the people at large in the islands been in active sympathy with Aguinaldo, and not that number would have supported him had he not exhibited so much armed force and allowed them to be misled in regard to the intentions of the American Government; third, that if an American army of five thousand men had been landed at Cavite at the same time Admiral Dewey destroyed the Spanish fleet, it would have been received by the people with joyous acclaim, and would have been able to go through the entire length of the islands, heartily welcomed by the people, with no thought of resisting us. Several Filipino leaders admitted to me, in the presence of some of our army officers, that there would never have been active resistance to the United States Government, and we would hardly have heard of Aguinaldo except as a former leader, if we had been in a position to send our garrisons where Aguinaldo sent his at the beginning of our occupation of the Philippines. Our government, however, cannot be blamed for not doing this, because it was a physical impossibility to have landed an army at Cavite when Dewey arrived there, and in those days we did not dream that Aguinaldo's fighting the Spaniards meant the long warfare with him which has since followed.

#### FALSE EDUCATION OF THE PEOPLE

It is well to bear in mind that there has at no time been any serious resistance to us by the people in any part of the islands where the Tagalog garrisons or Tagalog army had not already been located or had not operated. A most extensive system of false education, which is not generally known in America, was also carried on among the Filipino masses during the long period between the fall of Manila, in August, 1898, and the outbreak on February 4, 1899. By a pernicious system of circulars, letters, and newspapers printed from the presses of Manila and Malolos the people were taught to believe most misleading reports about the American people and the American Government. Men, women, and children were exhorted to distrust us, and lies without limit were told of our own government to men and women to make them fear and hate us. I have in my possession many illustrations of this lying literature. Added to this was the constant hope of the Filipinos, inspired by matter that came from America, that the turn of political conditions here would cause the United States to withdraw from the Philippines and establish Aguinaldo at the head of an independent government. Their leaders

never lost an opportunity to exhort their army and people to the belief that the American people would force their President to haul down the American flag. This is well known to every man who, like myself, came into close association with the Filipino army and people.

In considering the favorable account that I give of our opportunities in the Philippines and in surrounding countries, I would ask all those who are skeptical about both the present and the future to bear in mind that my conclusions are not post-bellum opinions, adapted to the minute or to be in line with public sentiment. Before I ever dreamed that the American flag would fly over the Philippines, I outlined in official reports, in letters to chambers of commerce, and in magazine articles America's great opportunities for the extension of her trade and influence in far eastern countries, including the Philippines, and hammered away year after year endeavoring to arouse greater interest than existed. At that time I went on record as saying that after having traveled through all the Asiatic lands, I believed that, in proportion to area and population, the Philippines surpassed them all in variety of resources and undeveloped opportunities. What I say now is simply in confirmation of former contentions.

If you were to ask me to give some of the necessary immediate influences that would assist in making America forever the paramount power of the Pacific, I would enumerate: First, permanent sovereignty over the Philippines; second, construction of the trans-isthmian canal; third, preservation according to the treaties of our trade rights throughout all China; fourth, the laying of a trans-Pacific cable. Further considerations of immediate importance are the early sending of a commission to fully investigate and report on Asiatic markets, as outlined in the forceful message of President McKinley, the upbuilding or reasonable subsidizing of our merchant marine, and—a new but important proposition—the extension of our parcel post system of mails to the far East to compete with similar European systems.

#### EFFECTS OF DEWEY'S VICTORY

In concluding I can give you no better argument in favor of our meeting our responsibilities bravely and successfully in the Philippines than the experience there of the representatives of the United States Government before and after Admiral Dewey sailed into Manila Bay and destroyed the Spanish fleet. Prior to May 1, 1898, there is no denying that American prestige, influence, and commerce among

Asia's 500,000,000 were at a low ebb, despite the best and the faithful labors of ministers and consuls. In Japan, in China, in Korea, and in Siam the United States was regarded as a second or third-rate power. While we ministers were treated with differential and patronizing consideration, we were not potent factors like our colleagues from Great Britain, Russia, Germany, and France. In trade, the agents of our business houses were endured, but not welcomed by the heads of great European and native firms in the far East. With the battle of Manila Bay there came a mighty and a marvelous change, of which I cannot speak in too strong terms, and the truth of which will be confirmed by every American who was familiar with the situation. There seemed to sweep up and down this 5,000 miles of coast line, and far into the interior, a tidal wave of American prestige, which left its trace and influence not only in the capitals of politics and trade but among the masses of distant provinces; and all at once ministers and consuls found themselves the representatives of a first-class power and standing shoulder to shoulder with the representatives of European nations, if not even leading them in influence and importance.

In other words, we became, by the battle of Manila Bay and the occupation of the Philippine Islands, the first power of the Pacific, for the control of which we seem to be destined by the great influences which shape the politics of the world and develop nations for mighty responsibilities. If we bravely perform our duty in the Philippines, establish peace and order, give the people a large degree of autonomy, spread the influence of our free institutions and hold there a position of commercial and strategic advantage for the advancement and protection of our vast growing interests in the Pacific and far East, we shall be forever the first power of the Pacific and of all the world. If we are laggards now, we shall be laggards until doomsday. If the war and occupation of the islands costs us hundreds of millions of dollars now, another war, which would inevitably come in the future if we should try to regain the position lost by withdrawing from the islands and to lead in the merciless race of nations for material and moral supremacy, would cost us ten times as many million dollars.

---

THE use of the North Sea and Baltic Canal by ocean-going vessels is slowly but steadily increasing. The entries during the month of October numbered 2,669, with an aggregate tonnage of 385,176, as compared with 2,436, with a total tonnage of 330,843, in October, 1898.



## THE CAPE NOME GOLD DISTRICT

By F. C. SCHRADER,

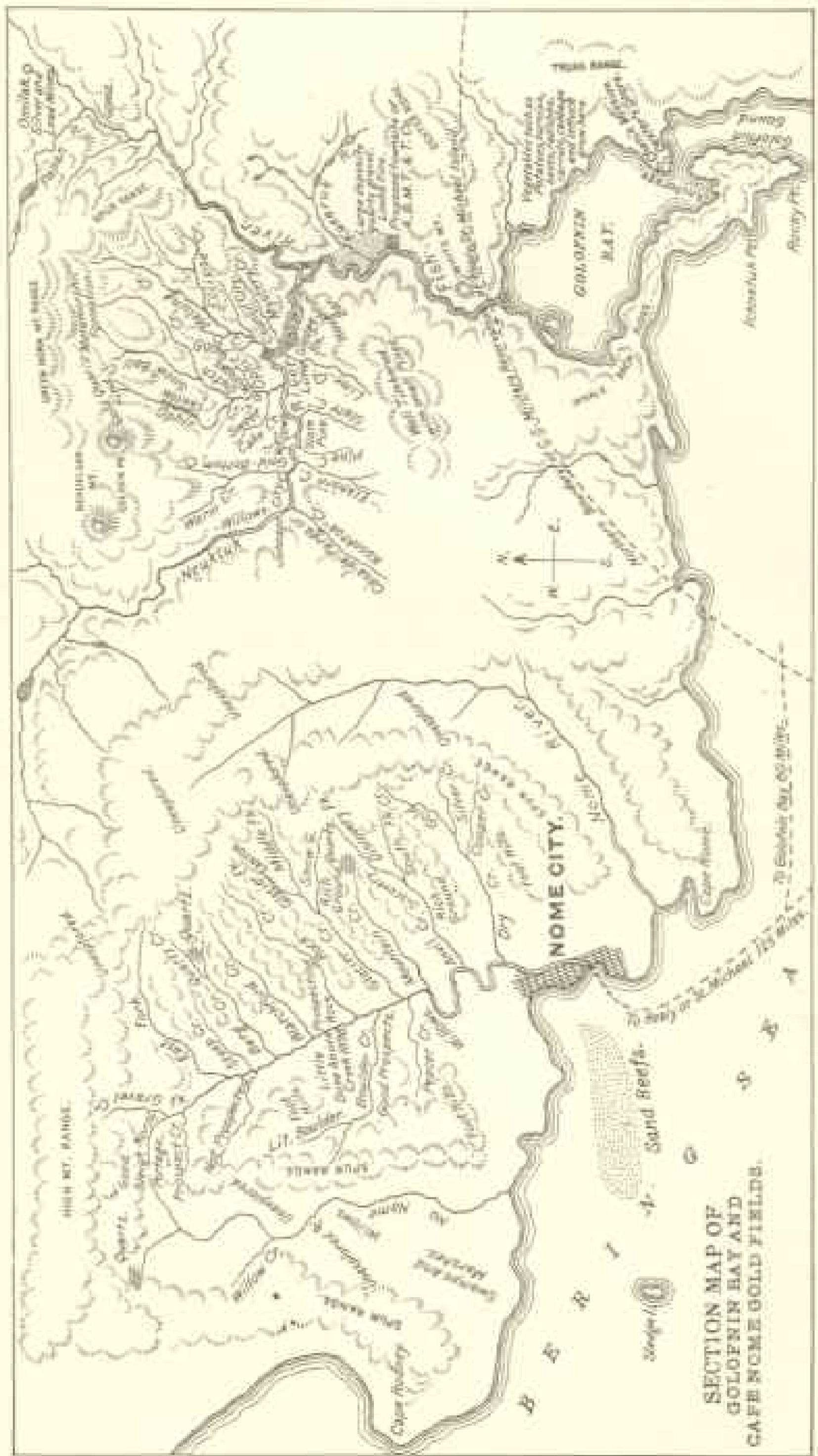
*United States Geological Survey*

On arriving at St Michael late in September, 1899, at the close of the field season's work in the Yukon country, we found that ocean transportation from St Michael to Seattle could not be obtained before about October 10, when the N. A. T. & T. Company's steamship *Romok* would sail. The interim of a couple of weeks' waiting was accordingly improved by repairing to Nome for the purpose of collecting such geologic and topographic data of this new district as time, circumstances, and climate would permit.

As our boats, tents, and camping outfits had been left in the Yukon country, our party was dependent for such accommodations at Nome or from the miners on the creeks and in the gulches. The topography was in charge of Messrs T. G. Gerdine and D. C. Witherspoon, while the geology and topography were done by Messrs Brooks and Schrader. The latter, with knapsacks of sleeping bags and provisions, made a several days' trip into the mountains and gulches to examine the formations and gold diggings. On account of the snow, cold weather, and freezing up of the creeks, most of the gold claims had been closed down early in October and the operators had departed. Wherever the miners were found to be still present, however, their hospitality was generously extended, notably by Mr F. P. King, members of the Pioneer Company, and other miners on Anvil Creek.

The Cape Nome district is situated on the northwest coast of Alaska, on the northeast arm of Bering Sea, at the entrance of Norton Sound. It is the southern promontory of a large peninsula, extending westward toward Siberia between Kotzebue and Norton Sounds, and largely separates Bering Sea from the Arctic Ocean. Westward this peninsula terminates at the 168th meridian in Cape Prince of Wales, the most westward extension of the American continent, which is here separated from Asia by Bering Strait, about 60 miles in width.

The promontory on which the Nome district occurs has long been known on nearly all Alaskan maps by the name of Cape Nome. The district lies about 100 miles northwest of St Michael, and just outside



of the Fort St Michael Military Reservation. By ocean steamer route it is nearly 2,700 miles northwest of Seattle, and about 750 miles from Dutch Harbor, Unalaska. The Cape Nome region as known at present extends from Cape Nome, the apex of the promontory, some 30 miles or more northwestward along the coast and about 20 miles inland to the north. In the middle of this shore line, at the mouth of the Snake River, the thriving city of Nome is situated.



PART OF NOME FROM THE BEACH — LOOKING NORTHWEST

From Cape Nome for 30 or more miles westward to near Synrock the shore line is comparatively straight and smooth, but lying back of the shore line, between it and the base of the mountains, occurs the well-known tundra. This consists of a strip of treeless, moss-covered marine gravels, forming a coastal shelf, which along the beach is about 30 feet above sea-level. From here it slopes gently upward until at the base of the mountains, some four or five miles from the beach, it attains an elevation of 150 or 200 feet. During the summer it is usually wet, soft, and boggy and is dotted here and there by a few

ponds, and is traversed by the Snake, Nome, and Cripple rivers and other smaller streams which carry out the drainage from the mountains.

Along the north edge of the tundra, at the beginning of the mountains, the topography is low and rounding, with the floors of the main valleys rather flat and from one to three miles in width. Seven miles north of Nome, crude gravel terraces, seemingly marine, were observed to the height of about 1,500 feet. These seem to mark successive stages of land elevation still going on.

Further northward, 20 or 30 miles from the beach, the mountains become more rugged and rise, in some instances, into seemingly permanent snow-peaks, but probably nowhere exceed 3,000 feet in elevation.

The nearest harbors for deep-sea or ocean vessels are Port Clarence, 60 miles northwest of Nome, and Golofnin Bay, the same distance northeast. It is not unlikely that one or both of these harbors will be connected with the Nome district by rail should the district prove as rich as present prospects indicate. Port Safety, a small harbor to the east of Cape Nome, will admit vessels not drawing over eight feet of water, but is not adequate for the accommodation of deep-sea-going vessels. In front of Nome the sea is so shallow that the larger vessels cannot approach the shore, but are obliged to discharge their cargoes by means of boats and lighters, a method which is very precarious on account of the combers and breakers that usually sweep the coast.

The mountains thus far examined are composed of mica-schists and limestone, alternating in layers and beds with each other. They are thin or medium bedded rocks, and strike and trend northeastward and southwestward and dip southeastward at an angle of about 45°. The limestone is bluish gray and comparatively fine grained and more or less well metamorphosed, often becoming a crystalline marble. The mica-schist is sometimes slaty, but it also shows considerable metamorphic action and is garnetiferous. Locally the rocks are sometimes folded and traversed by quartz veins, and veinlets, of both quartz and calcite, with also some iron and copper pyrites. Pyrites are also disseminated sporadically in the schists. The quartz veins and veinlets traversing the rocks are supposed to be the source of the gold. Far back in the mountains granite is said to occur, but may be represented merely by granitoid dikes, some pebbles of which occur in the beach gravels.

The tundra is composed of apparently marine gravels, derived from the rocks in the mountains, and is almost exclusively mica-

schist and limestone. Toward the mountains the gravels are often coarse, carrying boulders of considerable size, but along the beach they have been largely reduced to fine gravel and sand by wave action. It is in this reduced material that the beach gold occurs.

The first discovery of gold in the Nome district was made in September, 1898, when a party of Swedes found it on the creeks and in the gulches; but not until July, 1899, was the discovery of the beach gold made. In the gulches along the edge of the mountains the diggings



BEACH, TUSSELL, AND HILLS — LOOKING NORTHEAST FROM NOME

are coarse gold, the largest nuggets found being about \$350 each. Here the gold occurs on the "bed rock" under the creek gravels, which are six or eight feet in thickness.

Along the beach the gold is quite fine, having been reduced by wave action along with the gravel and sand to the size of bird-shot, or even finer. Its occurrence here is for the most part under two or three feet of gravel and sand, on a bottom layer of clay or argillaceous sand, called "bed rock" by the miners. Thin layers of ruby sand interstratified along with the gravel, near the so-called "bed rock," are also

often found to be richly auriferous. Beach diggings have been operated during the past summer and fall for about thirty or more miles, from Cape Nome to near Synrock. Coarse gold is being mined in Anvil, Glacier, Dexter, and Osborne creeks, and along Penny and Cripple rivers. The production of the region for the past season of 1899, as near as can be estimated, amounted to \$2,000,000, of which one-half has been produced by the beach. Discovery claim and one below on Anvil Creek produced \$225,000, while Snow Gulch, a very



SNOW RIVER AND NOME, FROM TENDRA ABOUT ONE MILE WEST OF NOME.

small tributary of Glacier Creek, is reported to have yielded over \$200,000.

In the gulches the work is carried on by stripping, sluicing, and to some extent by rocking, while on the beach the method of extracting the gold has thus far been almost exclusively by rocking. Here the water used for rocking is generally that of the ocean. In a few cases, however, the sea water has been raised by steam power and sluices constructed along the beach. In the rocker the gold is caught on blankets and to some extent on copper plates coated with mercury.

In many instances, where the supply of copper plate could not equal the demand, the bottom of the rocker was covered by United States silver coin, principally one-dollar pieces, and these coated with the mercury which caught the gold. During the latter part of summer and in the fall it is estimated that an average of 2,000 men were working along the beach, and that they took out an average of about \$20 per day per man. In many cases the amount taken out was much greater. The tundra between the beach and the base of the mountains has also been prospected to some extent and has not infrequently yielded from 10 cents to 30 cents per pan. Capital, however, will doubtless be required to handle the tundra with profit; also the benches above referred to in the lower region of the mountains have been found to be auriferous and have largely been staked.

The country about the head of Solomon and Bonanza rivers, 40 miles northwest of Nome, reports good prospects. In the Golofnin Bay country on Fish River and its tributaries coarse gold was taken out during the past summer. On Ophir Creek, one of the chief tributaries, a single claim is said to have yielded \$75,000. Prospects have also been reported on the western shore of Norton Bay. Late in the fall it was rumored that gold had been found at Cape York by a native employed in herding the Government reindeer. These rumors have since been more than verified by Captain Jarvis, who visited this region with the U. S. revenue cutter *Bear*, and by a recent number of *The Alaskan Miner*, issued at Juneau, which reports the country rich and that more than nine square miles of it were staked late in November and early in December. There seems good reason to infer that substantially the entire southern half of this large peninsula, covering more than 8,000 or 10,000 square miles, is gold-bearing and much of it very rich. It lies in the great Yukon gold belt, extending from the Klondike westward, and probably continues across Bering Sea into Siberia. It seems more than probable that the Siberian coast will be visited by enterprising American prospectors before another season has passed.

There is no timber in the Nome district. The nearest approach to it is a scanty growth of very stunted willow or elm along some of the waterways, wholly inadequate for ordinary camping purposes. A growth of moss, which furnishes abundance of food for reindeer, covers the surface except in the upper slopes of the mountains. There is, however, a sufficient growth of grass to sustain horses and cattle during the short summer months. Mr F. V. Coville attributes the absence of timber to the rigors of the Arctic climate.

Prior to the discovery of gold there were a few natives, all Eskimo, scattered along the coast from near Cape Nome northward, and a small village on Sledge Island during the seal-fishing season. At Port Clarence, which has been the headquarters of the United States reindeer industry in Alaska, is a mission with good schools.

The great movement of the white population toward Nome began early in the summer of 1899 and continued until the middle of October, building up a city of over 5,000 people on a previously barren beach. Nearly every boat which descended the Yukon from Dawson and other points on the river was loaded to its fullest capacity with passengers, while many came from the southeastern districts of Alaska and the Pacific coast of the United States. The rapidity in growth of the city of Nome has probably never been preceded, especially in so remote a region. A thousand or more unsuccessful prospectors descending from the Koyukuk district and an equal number from the Kotzebue Sound and Kowak River district arrived at St Michael in a financially stranded condition; but hearing of the diggings of Nome a majority soon found their way thither, and in a few days' work on the beach had rocked out sufficient gold to place themselves in moderately comfortable circumstances and pay their transportation back to the United States.

The principal trading companies operating at Nome are the N. A. T. & T. Company, the A. C. Company, and the A. E. or Alaska Exploration Company, all with fairly well-stocked warehouses and plants and abundant supplies for next spring. Of newspapers there are at the present time the *Nome News*, *The Nome Gold Digger*, and *The Nome Herald*. *The Nugget*, with printing press and equipments from Dawson, went down in a gale on Norton Sound in September, while a similar outfit bound for Nome from the United States went down on the *Laurado* at St Lawrence Island a few weeks later. A company is now being organized with a view to constructing a deep-water pier for a temporary harbor, to be extended far out into the ocean, whereby deep-sea vessels may be unloaded. Until more definite arrangements can be perfected the United States Post-Office is endeavoring to send the mails to Nome semi-monthly during the present winter by way of White Pass, Yukon River, and the Unalaklik and St Michael route. On account of ice in Bering Sea, Nome cannot be reached by ocean vessels earlier than some time in June, though the Nome coast is free from ice later in the fall and earlier in the summer than the coast about St Michael.



The climate of Cape Nome is mild and for the most part moist or rainy during the summer, but cold and severe in the winter season, which extends from late in October to May. The climate, however, is healthful. During the past summer the only difficulty the population of Nome seemed to encounter was typhoid fever, and this it seems likely would not have occurred with a good drainage system and a wholesome water supply, which may be readily obtained with a little care and labor. Several hospitals were organized and equipped and all did excellent service to their fullest capacity. Other patients were shipped down to the United States in nearly every returning vessel during the latter part of the season.

There are probably about 3,000 people wintering at Nome today, and judging from the present indications it is not unlikely that next summer the population will amount to about 25,000 or 30,000. Living during the past months has been very high—board and lodging, \$6 per day, and with room \$10 per day. The price of an ordinary meal was from \$2 to \$3, while wages ranged from \$12 to \$15 per day. Wood gathered from the drift wood along the beach cost \$40 to \$50 a cord; coal, \$125 per ton, and lumber \$125 per thousand feet, and other necessities almost in proportion.

The population, though considerably mixed, is preëminently American and contains a good business element and law-abiding people. The government is a self-organized municipal government, giving good order throughout. A police force is on duty and there is also located here a detachment of United States soldiers under Lieutenant Creigie, who did much in the earlier stages of Nome toward the preservation of order and the securing of individual rights.

---

## THE IDAHO AND MONTANA BOUNDARY LINE

By RICHARD U. GOODR,

*United States Geological Survey*

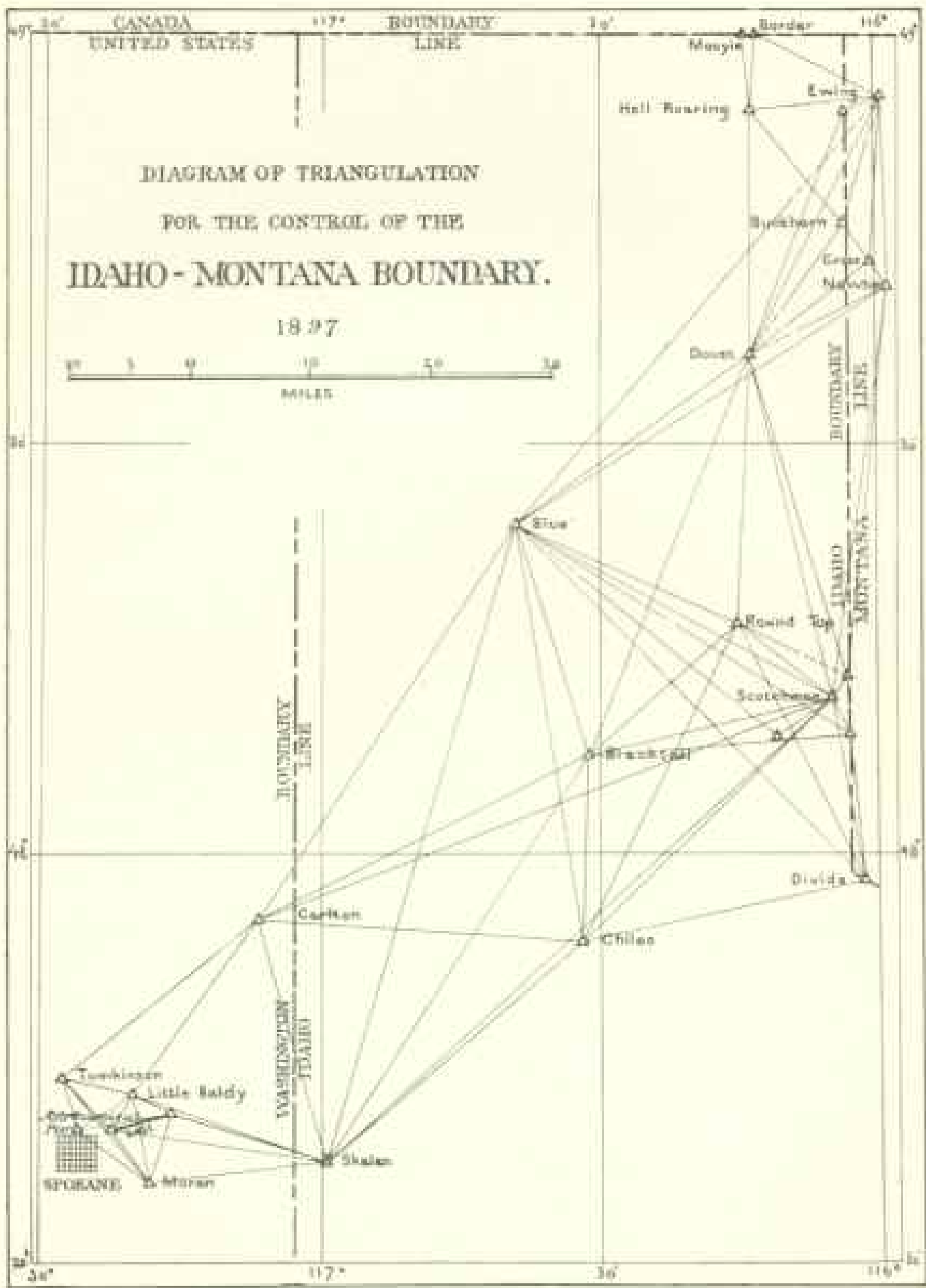
The United States Geological Survey has completed the survey and marking of the portion of the boundary line between Idaho and Montana corresponding to the 39th meridian west from Washington, or  $116^{\circ} 03' 02.30''$  west from Greenwich. The remaining portion of the boundary line follows the crest of the Bitter Root and Rocky Mountains, and as this crest is for the most part sharp and well-defined

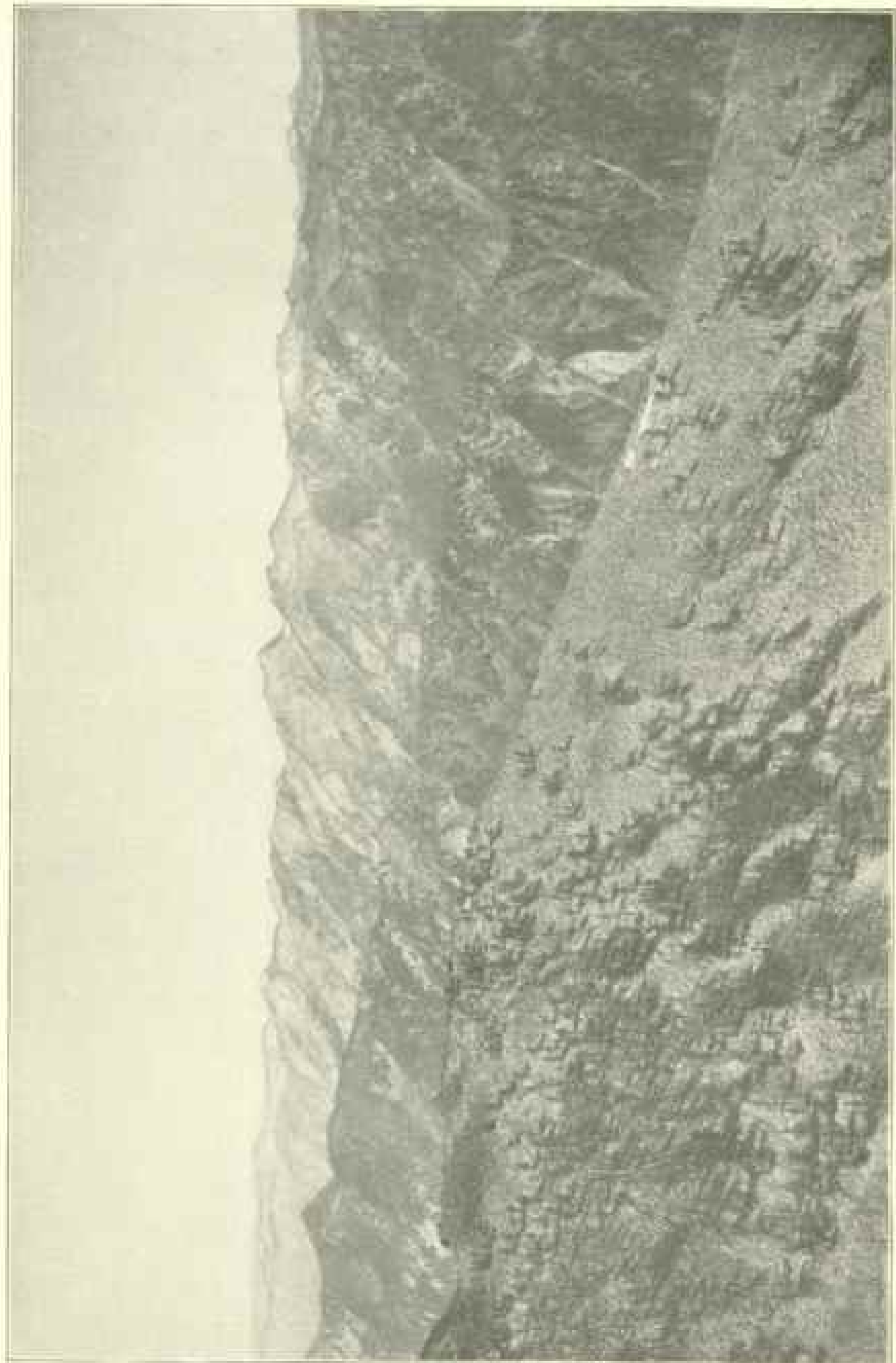
(see illustration, page 25), it was not considered necessary to place monuments along this portion of the line, nor would it have been possible to do so under the appropriation, as the available funds were exhausted on the part of the line first mentioned. From a geological standpoint, but hardly from a practical one, however, there is another reason why monuments should not be placed on the summit of the Bitter Root Range\* as marking the boundary line between Idaho and Montana. There is abundant evidence that the summit is what is known as a retreating or migrating divide; in other words, the waters tributary to the Bitter Root River in Montana are continually capturing by erosion those of the Clearwater River in Idaho, so that the divide is slowly being shifted to the westward, thus adding to the territory of Montana and diminishing that of Idaho. The existing divide is uniformly from six to eight miles from the irregular line representing the original divide, if the latter may be accepted as having passed through the highest points of the range, which seems probable.

Points near the meridian line were located by triangulation from the Spokane base of the U. S. Geological Survey, this base being referred for its initial latitude and longitude to two astronomic piers in the court-house grounds at Spokane, the latitude determination having been made by the U. S. Geological Survey and the longitude determination by the U. S. Coast and Geodetic Survey.

After the point on the crest of the Bitter Root Mountains corresponding to its intersection with the 39th meridian had been located, this location having been determined by traverse from the triangulation station divide (see diagram of triangulation on page 25), a random line was run northward to the international boundary by transit and stadia, horizontal and vertical distances being measured. Direction was controlled by frequent observations for azimuth. The line was further checked in azimuth, as well as in distance, by connection with the triangulation at four points. It was not practicable to establish a triangulation station near the line at its intersection with the international boundary, so from the most northerly location by triangu-

\* There has been considerable discussion as to just what constitutes the Bitter Root Range. The law defining the boundary line between Idaho and Montana implies that the range extends at least from Lake Pend d'Oreille to the Continental Divide, and it seems to the writer, as well as to others interested, that this designation should stand. There are, however, topographic and geologic considerations which make it desirable to differentiate somewhat, and it is proposed that the Bitter Root Range be subdivided as follows: The Coast Range Mountains, extending from the vicinity of Lake Pend d'Oreille to St Regis Pass; the St Regis Mountains, extending from St Regis Pass to Lolo Pass; the Lolo Mountains, extending from Lolo Pass to Nez Percés Pass, and the Nez Percés Mountains, extending from Nez Percés Pass to the Continental Divide.





CRISTO OF THE RANGE AND NEARLY ALL THE MOUNTAINS OF THE RANGE  
THE CREST OF THE RANGE IS THE BOUNDARY LINE BETWEEN ILLINOIS AND MONTANA

lation the distance to this point of intersection was measured with a steel tape and was also checked by stadia.

It may be noted that no monuments were found marking the international boundary near the point of its intersection with the Idaho-Montana boundary line, and it is believed that there are large sections of this important line which are not marked and have never been marked in any way. Considerable work was done by the Northwestern Boundary Survey, but just how far this work proceeded is not known. The State Department, in answer to an inquiry on the subject, makes the statement that "The department has no report of the western portion of the Northwestern Boundary Survey from the Pacific Coast to the summit of the Rocky Mountains." It is suggested that under these circumstances a commission similar to the one which recently served in connection with the survey and remarking of the boundary line between the United States and Mexico west of the Rio Grande might be appropriately appointed. There was found, however, among the records of the Northwestern Boundary Survey, in the manuscript-room of the State Department, a list of positions determined, and in this list was given the position of the Mooyie Trail monument, as follows: Latitude,  $49^{\circ} 00' 01.3''$ ; longitude,  $116^{\circ} 14' 59.2''$ . This monument was identified on the ground about eight and one-half miles west of the Idaho-Montana boundary line, and its position determined by triangulation with reference to the Spokane base and astronomic position as follows: Latitude,  $49^{\circ} 00' 01.51''$ ; longitude,  $116^{\circ} 14' 19.48''$ . The check in latitude, 21 feet, was considered very satisfactory, and even the discrepancy in longitude, about 2,647 feet, was not more than might be expected, considering the lack of telegraphic facilities by the Northwestern Boundary Survey.

The point determined as the true one for the intersection of the international boundary and the Idaho-Montana boundary was located with reference to the latitude of the Mooyie monument, so that there may be no discrepancy when the international boundary is ultimately traced and marked, it being assumed that the work already done by the Northwestern Boundary Survey will be accepted and utilized. The random line northward having been run, as previously stated, and the adjustments having been made connecting the line with the triangulation, the true line was then established from north to south and the monuments were placed.

The line going northward starts at an elevation of about 4,850 feet and, descending from the summit of the Bitter Root Mountains, crosses

the Clark Fork of the Columbia at an altitude of about 2,220 feet, then climbs to the summit of the Cabinet Mountains, reaching at this point an elevation of 6,670 feet. Continuing from this locality, it intersects many canyons tributary to the Kootenai River and crosses the latter, touching the platform of the station-house at Leonia, a station on the Great Northern Railroad, at an elevation of 1,824 feet; thence it ascends another high ridge, the Yak Mountain, reaching an altitude of 6,585 feet, whence there is a gradual descent, crossing, however, many lateral streams to the international boundary, at which point the elevation is about 4,500 feet. The country traversed is extensively trenched with canyons of considerable depth, and the sides of the mountains are in many places very precipitous. The profile shows a total rise and fall of about 63,000 feet. The line is for the most part through a heavily timbered country, and there are few roads or trails, so that the question of transportation was a rather difficult one. The length of the line surveyed passes through a latitudinal interval of  $1^{\circ} 1' 24.65''$ , or about 70½ miles.

Previous to the work herein referred to, no attempt had ever been made to locate and mark the Idaho-Montana boundary line, but the Northern Pacific and Great Northern Railways had estimated the points at which it crossed their line and established marks according to this estimation. The accepted crossing on the Northern Pacific was found to be about one-quarter of a mile west of the true line, and that of the Great Northern about one mile east of the true line, along the railway line, but only about one-half mile east thereof in direct longitude. Kootenai County, Idaho, spent a considerable sum of money in grading a road up the mountain from Leonia toward Sylvanite, which, when the boundary line was located soon after, was found to be in Flathead County, Montana.

The monuments used along the meridional portion of the line are of two kinds, stone and iron. The stone monuments are of granite, six feet in length and ten inches square, undressed, except for spaces sufficient to permit of the cutting of the words "Idaho" and "Montana" on opposite sides. These monuments are placed in the more prominent localities and are monolithic in all cases when it was possible to transport them in one mass to the proper position; otherwise they were cut in ten sections, so that they could be carried on pack mules, and were bolted and cemented together when established in place. The monuments at the international boundary and at the summit of the Bitter Root Mountains (these being the terminal points

of the meridional portion of the line) are of stone made from sections as described, and monoliths are placed near the points at which the boundary line crosses the Northern Pacific and Great Northern Railways. The iron monuments are hollow posts of wrought iron, six feet in length and about four inches in outer diameter, covered with a coat of asphaltum tar. They were flared at the bottom to a width of 12 inches, so that they might be more securely planted in the ground. These posts are set to a depth of three feet below the surface of the ground, three feet remaining above ground, and a conical mound of earth is raised around them to a height of two feet. On the tops of the posts are riveted bronze caps, on which is cast appropriate lettering, and the number of the monument and the distance from the international boundary in miles are stamped in large figures. In addition to the four stone monuments referred to above, 89 iron monuments were placed. The sites for the monuments were chosen with reference to the topographic features of the country instead of being placed at even miles, as has usually been the custom on boundary lines, but there are no intervals greater than a mile between monuments. They were placed generally on summits or near streams, roads, or trails. Between the monuments the line is thoroughly cut out and adjacent trees are blazed, so that the line can be readily recognized in any locality.

---

## THE COPPER RIVER DELTA

The entrance to the Copper River has become, within the past few years, a region of great interest and importance, and in order to develop its geography a Coast and Geodetic Survey party has been sent there for the past two seasons. Landing in the vicinity of Orca, Mr H. P. Ritter, under whose direction the operations were conducted, immediately began a triangulation of the surrounding country. His party consisted of Mr E. B. Latham and Mr H. C. Denson, both of the Coast and Geodetic Survey, with a foreman and eight hands. The following information has been taken from the reports of Messrs Ritter and Denson, which have just reached Washington.

Astronomical observations were made at several points, notably at Orca and at Kokinhenic. The work comprised a survey of the delta and its vicinity, roughly embracing about 1,000 square miles. The triangulation, of which the base was in the vicinity of Kokinhenic

astronomical station, covers the entire delta, and many observations were taken on the mountains lying to the east, north, and west. This work served to locate their position and determine their heights.

Hydrographic examinations were made at the mouth of the river and at other places. The plane-table work covered the shore-line, positions of sloughs, reefs, etc., and the tidal observations were used in reducing the hydrographic work. Meteorological observations were also made, as well as magnetic observations, at Orca and at a point in the middle of the delta. A large part of the topography was executed by application of the photo-topographic method. A map on a scale of 1:8000 was prepared from the results of the season's work.

The longitude depends on the transportation of chronometers, determining a sea rate from observations at San Francisco and Seattle and a land rate after having carried the chronometer ashore and made sufficient observations for this purpose.

Tidal observations were carried on at all stations occupied by the party, namely, Orca, Kokinhenic, Pete Dahl Slough, and Eyak River. These observations were made in such a way that the series for consecutive stations overlap, thus fixing the relation between the tides at the two stations.

At both Orca and Kokinhenic magnetic observations were made—at the former place in May and at the latter in June.

The photo-topographic camera was continually used, and the necessary developing accessories were carried along, so that the negatives were largely developed in the field. Owing to the general unfavorableness of the weather, no systematic scheme could be carried out, although a large amount of valuable data was obtained. One hundred and eighty views were taken with the topographic camera and 88 with an ordinary view camera.

The country in the vicinity of the mouth of the Copper River, as seen when approaching it from the sea, has the appearance of a vast snow-peaked mountain range whose tops are covered with perpetual snow. Innumerable glaciers move down the mountain sides and fill the deeply cut canyons. From the head of the delta to the ocean reef is a distance of about 25 miles. The delta is 50 miles wide, and the mountains range from 1,000 to 8,000 feet in elevation. The flats at the mouth of the river are cut up into numerous islands by the many tidal sloughs and small streams flowing from the glaciers. Many interesting features may be noted in regard to this particular locality, among which may be mentioned the violent winds, which begin dur-



ing the month of September and last through the winter until early spring. They are of such violence that it is impossible for any one to cross the delta while they prevail.

The body of water intervening between the flats and the ocean reefs is navigable to boats drawing from three to four feet of water, and is in places navigable to these only at high tide. By the receding tide an area of about 250 square miles is completely drained, and the surface presents one unbroken expanse of mud. The currents during the rising tide are extremely swift, as the ocean reef acts as a barrier until the water rises over it, when it flows in with great rapidity. The average temperature of the delta during the months of June, July, and August was found to be about 50° F. During the month of September it is 10° less, accompanied by freezing weather during the nights. The vegetation is very marked. On the flats are found flowers and marsh grass; on the sand dunes are alders, berry bushes, and cottonwood trees, while on the mountain side hemlock and firs grow in abundance.

From the head of the delta to where the river leaves the marsh and spreads out over the mud flats it flows nearly south, is about five miles wide, and consists of numerous changeable channels, varying in depth from five to twenty feet. The river breaks through the mountain range about 30 miles from the coast, and is here flanked on the east side by Miles Glacier and on the west by Childs Glacier. In this vicinity are the rapids, which form an insurmountable barrier to all kinds of upstream navigation except canoes.

The most westerly branch of the delta is known as the Alaganik Slough, being the most extensively traveled and important branch of the river. Its length is about 15 miles, and it varies in width from one-half mile to one mile, with depths from five to fifteen feet, depending on the stage of the tide. This branch is a tidal stream. The average tide at the lower end during the stay of Mr Ritter's party was about ten feet, while at Alaganik, at the upper end, the tide was from two to three feet. The navigation of this branch is facilitated by the fact that during flood-tide the direction of the current is east, while at ebb-tide it is west. This effect is felt as far as Alaganik.

On the Copper River delta are two large canneries, one at Orca and the other at Odiak. The fishing season begins about May and ends with July. During this time each cannery turns out about 30,000 cases.

E. D. PRIESTON.

## OUR NEW POSSESSIONS AND THE INTEREST THEY ARE EXCITING

The intense interest which is felt throughout the United States regarding the islands which the events of the past year have brought into closer relations with us is indicated in many ways, but especially in the large number of inquiries which are being received by the various departments of the government for information along these lines. Two editions of the monograph, "Cuba, Puerto Rico, the Hawaiian, Philippine, and Samoan Islands," issued by the Bureau of Statistics of the Treasury Department, have been entirely exhausted, and a third edition, containing much additional information received from government officials in those islands, as well as from other sources, has just been issued and the statistics of their commerce brought down to the latest possible date. The study of this latest information regarding these islands leads the Bureau of Statistics to the conclusion that their present consuming power is, in round terms, one hundred million dollars—about equally divided between agricultural products and manufactures, but that this can and will be greatly increased by the introduction of modern methods of production and by the creation of roads and railways by which the uncultivated area can be opened, consuming power being dependent upon producing power. Only about two millions of the thirty-five million acres composing the Island of Cuba have, it is estimated, ever been under cultivation, and a considerable percentage of this is now uncultivated, owing to the devastation of the recent wars. In Puerto Rico, while there is already a dense population, the productive capacity of the island can, it is believed, be greatly increased by the construction of railways and roads in the interior of the island, which has now few wagon roads at any distance from the coast capable of use for transporting agricultural products. In the Philippine Islands conditions are quite similar, and the introduction of railways and wagon roads would enable the cultivation of large areas of extremely productive land, which have not up to this time been brought under cultivation. In the Hawaiian Islands a considerable increase is being made in the productive area by irrigation from artesian wells. In the Samoan Islands, which are also discussed, the cultivable area is comparatively small, and especially so in the single island of Tutuila, which falls to the United

States under the new treaty between Great Britain, Germany, and the United States, the chief value of this island being its harbor, which is undoubtedly the finest island harbor in the South Pacific and perhaps of the entire Pacific Ocean.

All the products of these islands are of a class which the United States is constantly required to import in great quantities. The annual importation of tropical products into the United States averages fully \$250,000,000 in value, and as this large importation is composed chiefly of sugar, coffee, fruits and nuts, fibers, spices, drugs, dye and cabinet woods, and other tropical growths, all of which can be produced and are now being produced, in greater or less quantities, in these islands, it seems probable that their new relations with the United States may lead to the expenditure in them of most of the money which our people are compelled to send abroad for tropical products; and that in return we shall furnish them the increased supplies of foodstuffs and manufactures which their increased earnings will lead them to demand.

O. P. AUSTIN.

---

#### THE TOTAL ECLIPSE OF THE SUN, MAY 28, 1900

The path of the shadow of the approaching total eclipse of the sun, May 28, 1900, begins at sunrise over the Pacific Ocean, just to the west of Mexico, extends thence northeastward over the Southern States from New Orleans, La., to Norfolk, Va., crosses the middle portions of the North Atlantic Ocean to Portugal, and terminates near the northern end of the Red Sea at sunset. The location of this track in the United States is remarkable for its convenient accessibility to a multitude of people, who with a minimum of trouble can easily view the wonderful phenomenon of the solar corona. The track passes over New Orleans, La., centrally, touches Mobile, Ala., on the southern and Montgomery, Ala., on the northern edge, passes just to the north of Columbus, Macon, Milledgeville, and Augusta, Ga., a few miles south of Atlanta, Ga., a little north of Columbia, S. C., just south of Charlotte, N. C., and quite centrally over Raleigh, N. C., and Norfolk, Va. It is easily computed that more than half a million persons will see the total eclipse, of more or less duration, from their homes, and it is not unlikely that many more will take advantage of the opportunity to see the event of a lifetime. Educators ought to encourage their students to go to the track at some point of it, and thus arouse in them a prac-

tical interest in solar physics; transportation companies should find an opportunity, quite equal to an exposition, a yacht race, or a grand parade, of enticing many to make such an excursion. The fact that the track, instead of falling on the inaccessible places of the earth, is so near to suitable hotel accommodations will make the event one of unusual popularity in the United States.

The U. S. Weather Bureau has been conducting a cloud survey of the region near the track during the seasons of 1897, 1898, and 1899, with the object of determining the localities which have the least tendency to cloudiness at that time of the year. The result is that near the Atlantic Coast and extending back into North Carolina the prevailing cloudiness at the morning hour of the eclipse, 8 a. m. to 9 a. m., is about 40 per cent. In the states of Georgia and Alabama the percentage falls to less than 20 per cent. Near the Gulf of Mexico, in Mississippi and Louisiana, it rises again to more than 30 per cent. Hence it follows that the chances for fair weather are about twice as good in Georgia and Alabama—that is, on the highland of the southern end of the Appalachian system—as near the coast in either direction. Unfortunately the duration of the totality on the central line increases from 1 minute 13 seconds near New Orleans, La., to 1 minute 42 seconds near Norfolk, Va., so that astronomers would naturally select stations as near the Atlantic Coast as possible, in order to secure the longest look at the corona. Since the probability of cloudiness is a maximum at the very part of the track where the duration of the eclipse is greatest, there must be some balancing of chances in selecting the sites of the observing stations.

F. H. BIGELOW.

---

## THE CENSUS OF 1900

By DR. F. H. WINES,

*Assistant Director of the Census*

The census impresses the imagination of the American people as something vast and mysterious simply because of the magnitude of the numbers with which it deals and the extent of territory which it covers. The elements that go to make up a census are very few and very simple. The whole subject divides itself into two parts, collection of data and handling of data collected.

The census act prescribes what inquiries shall be undertaken and, in large part, what questions shall be asked. These questions are asked of every individual, of every owner of a farm, and of every manufacturer in the United States, all of whom are required to answer under penalty of law, and are liable to prosecution if false answers are given. For this purpose a small army of investigators is essential, numbering in the aggregate fifty thousand people. The country is divided into three hundred districts, each of which is put under the control of a supervisor, and for each subdivision an enumerator is appointed, who is expected to make a return for from 2,000 to 4,000 of population. The statistics of manufactures are severally collected by special agents. The enumerators are all required to complete their work in thirty days from June 1, 1900, while more time is given to collectors of statistics of manufactures. All these facts are reported on schedules, which constitute what may be called the raw material with which the Census Office has to deal.

Second, the Census Office itself may be regarded as a great manufacturing establishment in which this raw material is collected into printed books. Referring only to the population, it may be said that this conversion involves four distinct processes. In the first of these the facts recorded on the schedules are transferred to cards, one card for every individual enumerated, in which holes are punched according to various possible answers to questions contained in the schedule. There are on each card two hundred and forty distinct positions which any particular hole may occupy. The position of the hole shows its significance. The second process is that in which these cards are counted by electricity. The electrical counting-machine used in the last census is the invention of Herman Hollerith. It is so contrived that needles passing through the punched holes on each card form electrical connections which operate clock-faced dials, showing numbers corresponding to each individual fact or combination of facts. The third process consists in entering the number on result slips and combining them in tabular form as copy for the printer. The final process is the setting-up of the type and the preparation of the stereotyped plates for the press.

All this is very simple in theory and in practice, but it involves an enormous amount of work. The work done in the last census was equivalent to between 6,000 and 7,000 years for one man. The weight of the cards used was 200 tons, and of the schedules returned by the enumerators 150 tons. There is not a day during the continua-

tion of the census work in which it is not necessary to handle four or five tons of paper, while the number of clerks and other employes in the office is about 3,000. To organize and govern a force like this, for the most part untrained and collected almost at hazard from the general population, requires far more than ordinary intellectual and executive ability. The census act directs that this immense undertaking shall be completed in its main outlines by the 1st of July, 1902, or a little more than two years from the taking of the census. It may be doubted whether Congress knew what is implied in this requirement, but the Director and his assistants are determined to comply with it if possible. In order so to do certain conditions are essential, namely, a sufficient number of clerks, competent clerks, a proper house in which to carry on the work, and non-interference on the part of Senators and Congressmen with the government and discipline of the office. A building in which each of the above processes will be conducted in a single room on the ground floor, lighted by skylights in the roof, has been constructed in a convenient location for the especial use of the Census.

---

## GEOGRAPHIC NOMENCLATURE

Mr R. T. Hill's discussion of "Porto Rico or Puerto Rico" raises a question which should be settled on a national and permanent basis as quickly as possible, before the usage of tourists, newspapers and their reporters is more widely claimed as making precedent and constituting authority in the spelling and pronunciation of the geographical names of the countries that have lately come under the United States flag.

Mr Hill, whose excellent volume on the West Indies could scarcely have been written without a competent knowledge of the Spanish language, can hardly be serious in alleging that "Puerto" is unphonetic and unpronounceable by English-speaking lips. Still less seriously can he believe that the rules of the Geographic Board are intended to imply the adoption by all nations, untranslated, of such politically significant and often temporary compound names as "The United States," any more than they would require the German Empire to be called "Das Deutsche Reich" in this country. That the supposed difficulty is largely imaginary is plainly shown by the fact that in California far more troublesome names than "Puerto" are spelled as in Spanish, and are yet correctly pronounced by all but newcomers to the State. That during the late war the popular pronunciation of Santiago and San Diego was almost identical merely proves the great need of reform in English spelling; it certainly does not argue either that we should adopt the mistake or change the spelling of either name.

Long before there was a Board on Geographic Names the American missionaries in the Hawaiian Islands solved in a simple and sensible fashion the almost insuperable difficulty of spelling the native names and language so as to have them correctly pronounced by English-speaking people and the world at large. They simply adopted for the vowel sounds the letters consistently representing them in the Spanish, Italian, and German (and Sanscrit) languages, which are also current in the Orient in the case of the *lingua franca*; although this has been disregarded by the English in India, and has thus given rise to endless mispronunciations of the geographical names of that country. The question now before us is whether we are to repeat this blunder in our new possessions instead of adopting the sensible expedient of the New England missionaries above referred to, thus gradually working toward a popular understanding of phonetic spelling. We might then hope to get rid, by degrees, of the present orthography (or rather kakography) of the English language. Those who fondly hope to see English become the world-language can hardly expect to realize their dream so long as the present inconsistent spelling is continued; since it not only constitutes an obstacle to the learning of the language by foreigners, but wastes an enormous amount of precious time in our schools in spelling exercises whose intrinsic educational value is about equaled by that of the inter-conversion of mediæval weights, measures, and coins that so long constituted a favorite and long-protracted theme in our school arithmetics.

With the necessity of more language-study in our schools, in order to conform to the requirements of the new territorial acquisitions and of Pan-American commerce as well, our people will soon use their practical common sense with good effect upon these questions, and will find that what has been possible in California and Hawaii can as well be done by the nation as a whole, even if our British brethren should persist in further mutilating the geographical names of their possessions. I trust that whether in the future we write and say *Porto Rico* (Portuguese) or *Puerto Rico* (Spanish), the policy of the Geographic Board to conserve to the utmost extent possible the native pronunciation and spelling of names will be maintained as the only means of avoiding the most dismal and discreditable medley on our maps and in our official documents, and the indefinite aggravation of the evil which unprogressive jingoism, whether English or American, would impose upon ourselves, and especially upon posterity.

E. W. HILDARD,

*University of California.*

---

## PUERTO RICO, NOT PORTO RICO

The controversy over the name of this island has been brought to a highly satisfactory termination by the President of the United States, who has decided that the official spelling shall be *Puerto Rico*, on the ground that that is the form in use "by the people of the island themselves." This decision was rendered in response to a letter addressed to the President by the Chairman of the U. S. Board on Geographic Names, in which reference was made to the embarrassment arising from the non-uniformity of spelling prevailing in the executive

departments. The President's decision is gratifying not only as the final settlement of a question into the discussion of which an astonishing amount of feeling and even some misrepresentation have been imported, but also and especially for the reason that it is founded specifically upon the fact that Puerto Rico is the form in local use, thus sustaining that important feature of the policy of the board which makes local usage the principal factor in the determination of the official spelling of geographic names by the government of the United States. That the official form will speedily come into general use can scarcely be doubted. That rich legacy of Spanish names, so euphonious and so full of meaning, which constitutes a large part of the geographic nomenclature of California and the states and territories of the southwest, has been accepted by the American people without question, as have also the Indian names so common in many parts of the country. There is no demand for nor tendency toward the simplification of names far more difficult, both as to spelling and pronunciation, than Puerto Rico, and the proper spelling of the name of our new island possession will undoubtedly commend itself to the country at large.

J. H.

## GEOGRAPHIC LITERATURE

*Hawaiian America: Something of its History, Resources, and Prospects.* By Caspar Whitney. Pp. 357, with maps and illustrations. New York and London: Harper & Bros. 1899.

This is a history of the islands and a description of their present industrial, social, and political condition, written in an easy, entertaining style, and profusely illustrated with admirable half-tone cuts. It contains five maps, four of which are somewhat detailed charts of the islands.

H. G.

*The New-born Cuba.* By Franklin Matthews. Pp. 389. New York and London: Harper & Bros. 1899.

This is the story of the early stages of reconstruction in Cuba, a page of history not yet a year old. It tells of the installation and working of the military government, of the sanitation of the towns, the relief of the starving, and the attitude of the people toward the future. The author sums up his conclusions at the end of the preface as follows: "Cuba's future, it is safe to predict, will reveal and justify the wise and beneficent acts of the American officials during the most critical part of American occupation, namely, its beginning and early growth. . . . Whatever may be the result of later complications, American occupation of Cuba assuredly was started right." The book is beautifully illustrated with half-tone cuts.

H. G.

*Practical Exercises in Elementary Meteorology.* By Robert DeCoursey Ward, Instructor in Climatology in Harvard University. Pp. xiii + 192. Boston: Ginn & Company. 1899. \$1.25.

The especial attention of teachers should be called to this important publication, which is simply a manual for their guidance in teaching meteorology in high schools and academies. It is, in fact, an orderly publication of the many



results of the wide experience of Professor Wm. M. Davis and Mr Ward in teaching meteorology during the past fifteen years at Harvard University. It may even be described as the natural outcome of the methods of teaching this subject that the present writer inaugurated in 1881-'82 for the guidance of the pupils of the Normal School at Washington. Our ideas with regard to education, in meteorology as in every other branch of science, have now come to agree on one fundamental principle, viz., that personal experience, laboratory practice, and individual work are infinitely superior as methods of instruction to the old-fashioned study of text-books. School boards and parents must demand and teachers must be able to give this higher sort of instruction before it can become common in the schools. To this end Mr Ward's "Practical Exercises" will powerfully contribute.

Mr Ward begins by requiring the pupil (and why not also the teacher?) to keep his own personal record of the weather. At first no instruments are to be used, but afterward the thermometer, anemometer, rain gauge, psychrometer, and barometer are successively introduced; eventually the nephoscope, thermograph, and barograph appear. The use of these instruments of course implies that the observer shall have a general understanding of their methods of action, the errors to which they are subject, and the application of the numerical corrections that are given in the tables also published in Mr Ward's book.

It is not designed or desired that the classes for which this book is written should go very deeply into the complex problems of meteorology. As Mr Ward says, complicated matters should be left to later years. "The teacher who has a fairly good knowledge of one comprehensive modern text book of meteorology will find himself sufficiently well equipped to answer the questions that will be put by the class." The first care of the teacher must be to stimulate good habits of observation and of careful generalization; the search for hidden causes and true explanations must come later. "The interest of a class can easily be kept up throughout a school year by means of a progressive system of observations." The study of the weather should be begun in the lower, if not the lowest, grades of the ordinary grammar school. It is therefore necessary that teachers should have studied the subject previously in their normal schools, a fact that the employés of the Weather Bureau have for twenty years past been constantly emphasizing. Mr Ward believes that the higher instrumental observations, such as the barometer, psychrometer, and nephoscope, may be profitably undertaken in the high school years if not in the last year of the grammar school.

Chapters IV-VII deal with the weather map, its construction and use; chapter IX with the direction of the wind in its relation to the gradient of pressure, and chapter X with the velocity of the wind. After this follow the chapters on cyclones and anticyclones, methods of studying the winds, the weather sequences, the temperatures of the air at different heights, the diurnal variation of direction and velocity of wind. Finally, the observation and formation of dew, frost, and clouds completes the book, which is full of good suggestions to both teachers and scholars.

Fortunately, meteorology may be studied in city schools quite as satisfactorily as in the country, as has been abundantly demonstrated by every-day experience in Brooklyn.

The strong point of the present handbook is that it does not attempt to handle difficult scientific problems. It is adapted to every one's capacity, but it requires that the pupil acquire habits of accurate observation and logical reasoning, instead of the inaccurate and illogical processes that so commonly prevail. We believe that it will exert a strong and beneficial influence in the grammar and high schools of the country.

CLEVELAND ADRIE.

---

## CORRESPONDENCE

ROYAL SCOTTISH GEOGRAPHICAL SOCIETY, QUEEN STREET,

EDINBURGH, November 30, 1899.

*The Editor, The National Geographic Magazine, Washington, D. C.*

DEAR SIR: In your November number, opposite page 449, you reproduce our map of northwest Canada and southwest Alaska, and this map is adduced as a proof that, "even after the Joint High Commission had been agreed upon, the best informed British cartographers had not become aware of any conflicting claim," referring to the boundary between British territory and Alaska.

First of all, I must admit that the map is very badly printed [in our Magazine]. Nevertheless, if Mr Foster had examined it attentively he would have seen that the pink coloring, representing British territory, extends to the west of the line claimed by the United States; indeed, owing to bad printing, it extends over some of the islands belonging to the United States. Of course, the copy in the NATIONAL GEOGRAPHIC MAGAZINE does not show this, being in black and white only.

We do not discuss at length political questions, but as shown by one or two notes (on page 488, volume xi), we are quite aware of the questions in dispute relating to the boundary and should not publish a map that was erroneous in this respect unless due, as in this case, to bad printing.

Yours very truly,

W. A. TAYLOR,

*Acting Editor, The Scottish Geographical Magazine.*

---

THE Russian Government is making preparation for the construction of a new railway from southern European Russia to Turkestan. This will considerably shorten the route from the commercial centers of Russia to Central Asia.

On October 24 the government of General Castro announced to the representatives of foreign nations its exercise of governmental functions throughout the Republic of Venezuela. It was recognized as a *de facto* government by Great Britain on November 18 and by the United States on November 21.

The first grain elevator ever constructed in the Netherlands has just been completed at Amsterdam by the municipal government. Its total capacity is from 15,000 to 18,000 metric tons, its maximum receiving capacity 440,020 pounds per hour, and its discharging capacity, on the harbor side, 220,400 pounds per hour.

# NATIONAL GEOGRAPHIC SOCIETY

*President*

ALEXANDER GRAHAM BELL

*Vice-President*

W. J. MCGEE

*Board of Managers*

1897-1900	1898-1901	1899-1902
MARCUS BAKER	A. GRAHAM BELL	CHARLES J. BELL
HENRY F. BLOUNT	HENRY GANNETT	G. K. GILBERT
F. V. COVILLE	A. W. GHERLY	DAVID J. HILL
S. H. KAUFFMANN	JOHN HYDE	C. HART MERRIAM
WILLIS L. MOORE	W. J. MCGEE	H. S. PRITCHETT
W. B. POWELL	F. H. NEWELL	J. STANLEY-BROWN

*Treasurer*

HENRY GANNETT

*Corresponding Secretary*

WILLIS L. MOORE

*Recording Secretary*

JOSEPH STANLEY-BROWN

*Foreign Secretary*

ELIZA RUHAMAH SCIDMORE

OFFICES OF THE SOCIETY

Rooms 107, 108, Corcoran Building, Fifteenth and F Streets N. W., Washington, D. C.  
Office Hours: 8.30 A. M. to 5.00 P. M. Telephone No. 471.

The National Geographic Magazine is sent free of charge to all members of the National Geographic Society

## Recommendation for Membership in the National Geographic Society.

The following form is enclosed for use in the nomination of persons for membership. *Please detach and fill in blanks and send to the Secretary.*

Dues: Resident, \$5; Non-resident, \$2; Life membership, \$50. If check be enclosed, please make it payable to order of the National Geographic Society, and, if at a distance from Washington, remit by New York draft or P. O. money-order.

1900

To the Secretary, National Geographic Society,  
Washington, D. C.:

Please propose \_\_\_\_\_

occupation and address: \_\_\_\_\_

for \_\_\_\_\_ membership in the Society.



## CHESAPEAKE & OHIO RY.

**THE F. P. V. LIMITED** is one of the finest trains hauled over any railway track in America. It runs solid between Cincinnati and New York, the route from Washington being over the Pennsylvania system. It has every modern convenience and appliance, and the dining-car service has no superior if it has an equal. The road-bed is literally hewed out of the eternal rocks; it is ballasted with stone from one end to the other; the greater portion is laid with one-hundred-pound steel rails, and although curves are numerous in the mountain section, the ride is as smooth as over a Western prairie.

One of the most delightful rides in all the route is that through the New River valley. The mountains are just low enough to be clad with verdure to the very top, and in the early spring every variety of green known to the mixer of colors can be seen, while the tones in autumn take on all the range from brown to scarlet.

These facts should be borne in mind by the traveler between the East and the West.

H. W. FULLER, *Genl. Pass. Agent, Washington, D. C.*

The Fastest and Finest Train in the West . . . .

IS



# The Overland Limited

.....TO.....

## UTAH and CALIFORNIA.

FROM 16 TO 20 HOURS  
SAVED BY USING

### "THE OVERLAND ROUTE."

- Double Drawing-Room Pullman Sleepers.
- Free Reclining Chair Cars.
- Pullman Dining Cars.
- Buffet Smoking and Library Cars.

Send for Descriptive Pamphlet "49-96,"  
Folders and other Advertising Matter.  
(Mention this publication.)

E. L. LOMAX,  
General Passenger and Ticket Agent,  
OMAHA, NEB.

# THE CHICAGO, MILWAUKEE AND ST. PAUL RAILWAY .. RUNS ..

Electric Lighted and Steam Heated Vestibuled Trains between Chicago, Milwaukee, St. Paul and Minneapolis daily.

Through Parlor Cars on day trains between Chicago, St. Paul and Minneapolis.

Electric Lighted and Steam Heated Vestibuled Trains between Chicago and Omaha and Sioux City daily.

Through Sleeping Cars, Free Reclining Chair Cars and Coaches between Chicago and Kansas City, Mo.

Only two hours from Chicago to Milwaukee. Seven fast trains each way, daily, with Parlor Car Service.

Solid trains between Chicago and principal points in Northern Wisconsin and the Peninsula of Michigan.

Through Trains with Palace Sleeping Cars, Free Reclining Chair Cars and Coaches between Chicago and points in Iowa, Minnesota, Southern and Central Dakota.

The finest Dining Cars in the World.

The best Sleeping Cars. Electric Reading Lamps in Berths.

The best and latest type of private Compartment Cars, Free Reclining Chair Cars, and buffet Library Smoking Cars.

Everything First-class. First-class People patronize First-class Lines.

Ticket Agents everywhere sell tickets over the Chicago, Milwaukee and St. Paul Ry.

GEO. H. HEAFFORD,

*General Passenger Agent, Chicago, Ill.*

## CALIFORNIA..

OF course you expect to go there this winter. Let me whisper something in your ear. Be sure that the return portion of your ticket reads via the . . .

### Northern Pacific-Shasta Route.

Then you will see the grandest mountain scenery in the United States, including Mt. Hood and Mt. Rainier, each more than 14,000 feet high, Mt. St. Helens, Mt. Adams, and others. You will also be privileged to make side trips into the Kootenai Country, where such wonderful new gold discoveries have been made, and to Yellowstone Park, the wonderland not only of the United States, but of the World. Close railroad connections made in Union Station, Portland, for Puget Sound cities and the east, via Northern Pacific.

CHAS. S. FEE,

*General Passenger Agent, St. Paul, Minn.*

PEOPLE like to read about the great and wonderful country of the Southwest; of its quaint and curious towns, its ancient civilizations, its natural marvels. They like to get accurate information about **California and the Pacific Coast**. This is because most people want to some day see these things for themselves. . . . .



A charming book covering these facts is issued by the  
**PASSENGER DEPARTMENT**  
OF THE  
**Southern Pacific Railway,**  
and will be sent to any one, postpaid,  
on receipt of **TEN CENTS.**



THE BOOK IS ENTITLED

“Through Storyland  
to Sunset Seas,”



You can get a copy by writing to  
**S. F. B. MORSE,**  
General Passenger Agent,  
Southern Pacific,  
New Orleans,  
and sending 10 cts. to defray postage.



AND IS A WONDERFULLY HANDSOME VOLUME OF **205** PAGES, WITH **160** ILLUSTRATIONS. . . .

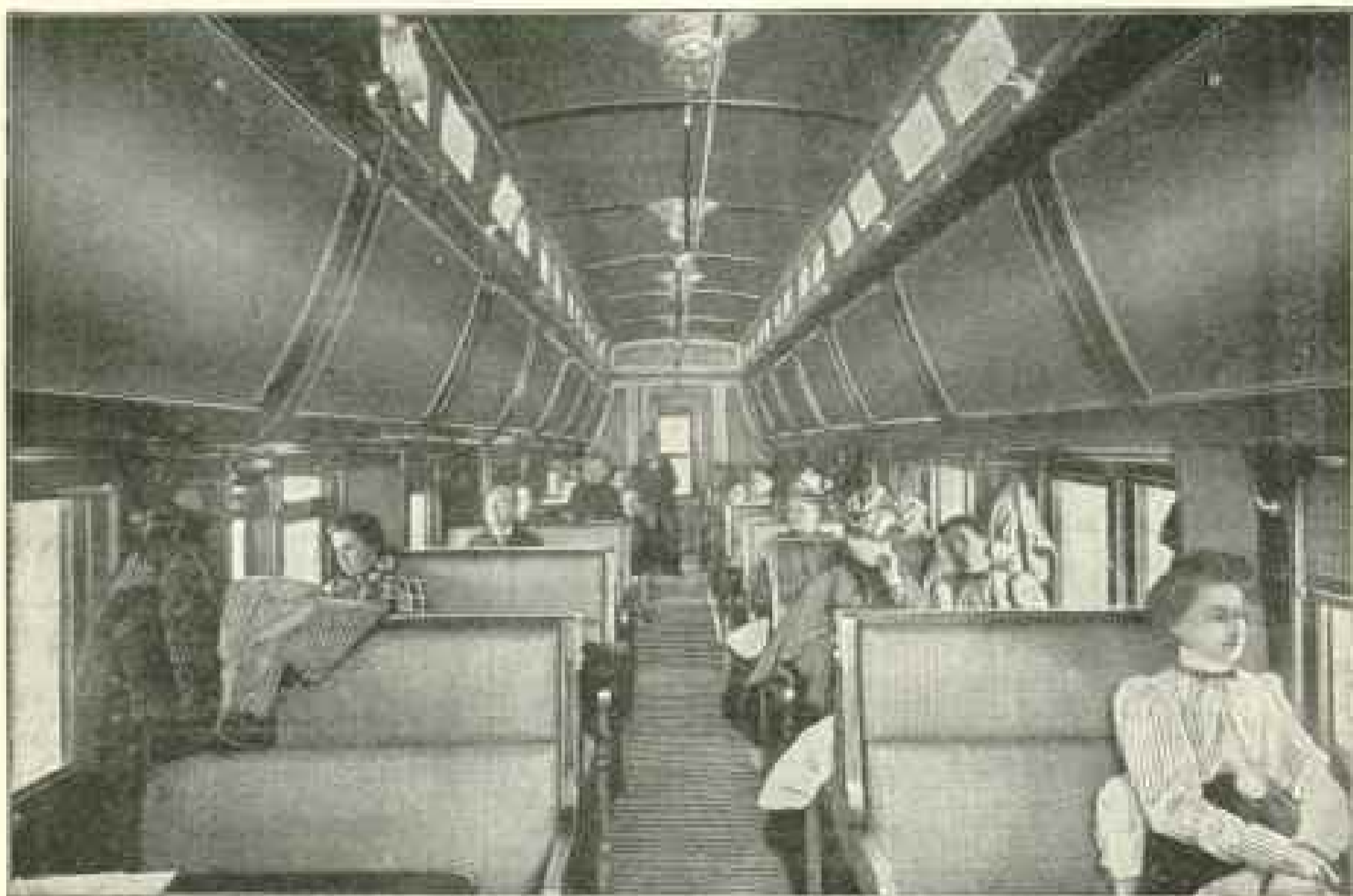
The paper used is **FINE PLATE PAPER**, and every typographical detail is artistic. It is a story of what four people saw on just such a trip as you would like to make. . . . .

**Burlington  
Route**

PERSONALLY CONDUCTED  
TOURIST PARTIES TO  
**California**

Leave BOSTON every Tuesday  
Leave CHICAGO every Wednesday  
Leave ST. LOUIS every Wednesday\*

**Comfortable and Inexpensive**



**SELECT PARTIES** leave Boston every Tuesday via Niagara Falls and Chicago, joining at Denver a similar party, which leaves St. Louis every Wednesday. From Denver the route is over the Scenic Denver and Rio Grande Railway, and through Salt Lake City.

Pullman Tourist Sleeping Cars of a new pattern are used. They are thoroughly comfortable and exquisitely clean, fitted with double windows, high-back seats, carpets, spacious toilet-rooms, and the same character of bedding found in Palace Cars. They are well heated and brilliantly lighted with Pintsch gas. Outside they are of the regulation Pullman color, with wide vestibules of steel and beveled plate glass. Beautifully illustrated books on California and Colorado, with maps, train schedules and complete information can be had from any of the following Burlington Route agents:

**E. J. SWORDS**  
379 Broadway  
NEW YORK CITY

**W. J. O'MEARA**  
106 1/2 Washington Street  
BOSTON, MASS.

**H. E. HELLER**  
632 Chestnut Street  
PHILADELPHIA, PA.

**F. E. BELL**  
211 Clark Street  
CHICAGO, ILL.

**C. D. HAGERMAN**  
703 Park Building  
PITTSBURG, PA.

**J. G. DELAPLAINE**  
Broadway and Olive Streets  
ST. LOUIS, MO.

Shortest Line  
TO  
St. Paul and Minneapolis  
and the Northwest

**CHICAGO**  
**GREAT**  
**WESTERN**  
RAILWAY

"Maple  
Leaf  
Route"

For tickets, rates or any detailed information apply  
to your home agent or write to

F. H. LORD,  
Gen'l Pass'r and Ticket Agent,  
CHICAGO.

A VITAL POINT



A TYPEWRITER'S  
PRINTING MECHANISM

MUST BE SCIENTIFICALLY CON-  
STRUCTED. THIS POINT IS OF  
UTMOST IMPORT FOR

EASY OPERATION AND  
PERFECT EXECUTION.

The Smith..  
Premier  
Typewriters

Superior on This Point as Well as on All Others.

The Smith Premier Typewriter Co.,

ONLY CORRECT  
PRINCIPLES EMPLOYED.

SYRACUSE, N. Y., U. S. A.

Catalogues and Information at Washington Office, No. 519 Eleventh Street.



# THE AMERICAN FORESTRY ASSOCIATION.

ORGANIZED APRIL, 1882.

INCORPORATED JANUARY, 1897.

## OFFICERS FOR 1899.

*President:* Hon. JAMES WILSON, Secretary of Agriculture.

*First Vice-Pres.:* Dr. B. H. FERNOW.

*Vice-Pres. for District of Columbia:* GEORGE W. McLANAHAN.

*Corresponding Sec'y:* V. H. NEWELL.

*Recording Secretary and Treasurer:* GEORGE P. WHITTLESBY.

The object of this Association is to promote:

1. A more rational and conservative treatment of the forest resources of this continent.
2. The advancement of educational, legislative, and other measures tending to promote this object.
3. The diffusion of knowledge regarding the conservation, management, and renewal of forests, the methods of reforestation of waste lands, the proper utilization of forest products, the planting of trees for ornament, and cognate subjects of arboriculture.

Owners of timber and woodlands are particularly invited to join the Association, as well as are all persons who are in sympathy with the objects herein set forth.

Life Membership, \$50.

Annual Membership, \$2.00.

## THE FORESTER: THE AMERICAN FORESTRY ASSOCIATION.

THE OFFICIAL ORGAN OF

A monthly magazine devoted to AGRICULTURE and FORESTRY, the care and use of forests and forest trees, and related subjects.

Subscriptions, \$1.00 a Year. (Furnished gratis to members of the Association.)

Address all communications to

Corcoran Building, Washington, D. C.

## HENRY ROMEIKE'S BUREAU OF PRESS CUTTINGS,

110 Fifth Avenue, New York.

Reads every paper of importance published in the United States, and through its European agencies in London, Paris, Berlin, and Vienna every paper of importance published in Europe and the British Colonies. One subscription on any given subject will bring notices from the United States, and if desired also from the European papers. Write for terms.

# WOODWARD & LOTHROP

invite attention to their selections and importations in desirable merchandise for the present season, comprising in part

Paris and London Millinery, Silks, Velvets, High-class Dress Goods, Ready-to-Wear Outer Garments for Women, Girls and Boys, Hand-made Paris Lingerie, Corsets, Infants' Outfitings, Hosiery, Laces, Ribbons, Embroideries, Linens, Upholstery Goods, Books, Stationery, Card Engraving; also Paris, Vienna, and Berlin Novelties in Leather and Fancy Goods, Sterling Silver Articles, Lamps, Clocks, Bronzes, etc., for Wedding Gifts . . . .

10th, 11th and F Streets, Washington, D. C.

NEW GEOGRAPHICAL BOOKS

Carpenter's Geographical Reader—South America . . . \$0.60

A personally conducted tour through the most characteristic parts of the Continent. Children visit the different countries and observe the people in their homes and at their work. They learn much of the natural wealth of the countries, of the curious animals of the different zones, and of the wonderful flowers and trees of the tropics. Written in familiar conversational style. Colored maps and beautiful illustrations.

Other Books of the Series.

Carpenter's Geographical Reader—North America . . . \$0.60

Carpenter's Geographical Reader—Asia . . . . . .60

THE NATURAL GEOGRAPHIES

Natural Elementary Geography . . . . . .60

Natural Advanced Geography . . . . . 1.25

These books have met with the most astonishing success of any geographies ever published and are now used in nearly all the leading schools throughout the country. They are the only school geographies having corresponding maps drawn on the same scale and showing correctly the relative size of countries. Other new features.

*Send price and receive, postpaid, copies of these valuable books*

AMERICAN BOOK COMPANY

NEW YORK CINCINNATI CHICAGO BOSTON ATLANTA PORTLAND ORE.

SEND TO THE—

MACMILLAN COMPANY

For the LATEST TEXT-BOOKS and WORKS OF REFERENCE  
ON EVERY BRANCH OF SCIENCE BY  
LEADING AUTHORS.

PROF. L. H. BAILEY (Cornell University),  
works on *Agriculture and Botany*

PROF. THORP (Mass. Inst. Tech.), on *Industrial Chemistry*. \$3.50 net.

PROF. PACKARD (Brown Univ.), on *Entomology*.  
\$4.50 net.

PROFS. HARKNESS AND MERLEY (Bryn Mawr and Haverford), *Theory of Analytic Functions*. \$3.00 net.

PROF. DAVENPORT (Harvard University),  
*Experimental Morphology*. Vol. I, \$2.50; Vol. II, \$3.00.

PROF. HENRY F. OSBORN (Columbia Univ.),  
Editor of the *Columbia Biological Series*.

PROF. NICHOLS AND HIS COLLEAGUES (Department of Physics, Cornell Univ.), in *Physics, Electricity, etc.*

PROF. LAMBERT (Lehigh University), on *Differential and Integral Calculus*. \$1.50 net.

PROF. LACHMAN (Univ. of Oregon), *The Spirit of Organic Chemistry*. \$1.50 net.

PROF. TARR (Cornell Univ.), *Physical Geography, Geology, etc.*

PROF. COURRY (Tufts College), *Dictionary of Chemical Substances*.

These are a few only of the names represented in the Catalogue or the New Announcement List (sent free).

THE MACMILLAN COMPANY, Publishers, NEW YORK.

The Leading Scientific Journal of America

# SCIENCE

A JOURNAL DEVOTED TO THE ADVANCEMENT OF SCIENCE.

PUBLISHED EVERY FRIDAY.

Annual Subscription, \$5.00.

Single Copies, 15 Cents.

From its first appearance, in 1883, *SCIENCE* has maintained a representative position, and is regarded, both here and abroad, as the leading scientific journal of America.

Its Editors and Contributors come from every institution in this country in which scientific work of importance is accomplished, including Harvard, Yale, Columbia, Pennsylvania, Johns Hopkins, Cornell, and California Universities, among others.

## EDITORIAL COMMITTEE

S. NEWCOMB, Mathematics; R. S. WOODWARD, Mechanics; E. C. PICKERING, Astronomy; T. C. MENDENHALL, Physics; R. H. THURSTON, Engineering; IRA REMSEN, Chemistry; J. LE CONTÉ, Geology; W. M. DAVIS, Physiography; HENRY F. OSBORN, Paleontology; W. K. BROOKS, C. HART MERRIAM, Zoology; S. H. SCUDDER, Entomology; C. E. BESSEY, N. L. BRITTON, Botany; C. S. MINOT, Embryology, Histology; H. P. BOWDITCH, Physiology; J. S. BILLINGS, Hygiene; J. McKEEN CATTELL, Psychology; J. W. POWELL, Anthropology.

## NEW AND POPULAR SCIENTIFIC BOOKS.

### HARDIN

**The Liquefaction of Gases.** Its Rise and Development. By WILLIET L. HARDIN, Ph. D., University of Pennsylvania. Cloth, 12mo, \$1.50.

A popular yet complete account of the methods used in the liquefaction of air, among other gases.

### GANONG

**The Teaching Botanist.** A Manual of information upon Botanical Instruction, together with Outlines and Directions for a Comprehensive Elementary Course. By WILLIAM F. GANONG, Ph. D., Smith College.

Cloth, 12mo, \$0.40 net.

A manual of information upon botanical instruction, with outlines and directions for an elementary course.

### MACBRIDE

**The Slime Moulds.** A Handbook of North American Myxomycetes. By THOMAS H. MACBRIDE, Professor of Botany, University of Iowa. Cloth, 12mo.

A list of all species described in North America, including Central America, with annotations.

### SUTER

**Handbook of Optics.** For Students of Ophthalmology. By WILLIAM N. SUTER, M. D., National University, Washington, D. C.

Cloth, 12mo, \$1.00 net.

Aims to give a clearer insight into the phenomena of refraction as applied to ophthalmology than can be obtained from the usual text-books on Refraction of the eye.

THE MACMILLAN COMPANY, Publishers, NEW YORK.

# APPLETON'S GEOGRAPHICAL SERIES.

---

Edited by H. J. MACKINDER, M. A., Student of Christ Church,  
Reader in Geography in the University of Oxford,  
Principal of Reading College.

---

The series will consist of twelve volumes, each being an essay descriptive of a great natural region, its marked physical features, and the life of its people. Together the volumes will give a complete account of the world, more especially as the field of human activity.

The series is intended for reading rather than for reference, and will stand removed on the one hand from the monumental work of Reclus, and on the other from the ordinary text-book, gazetteer, and compendium.

Each volume is to be illustrated by many maps printed in colors and by diagrams in the text, and it will be a distinguishing characteristic of the series that both maps and diagrams will be drawn so that each of them shall convey some salient idea, and that together they shall constitute a clear epitome of the writer's argument. With a like object, the pictures also will be chosen so as to illustrate the text and not merely to decorate it. A detailed announcement of this important series will be presented later.

## List of the Subjects and Authors.

1. **Britain and the North Atlantic.** By the EDITOR.
2. **Scandinavia and the Arctic Ocean.** By Sir CLEMENTS R. MARKHAM, K. C. B., F. R. S., President of the Royal Geographical Society.
3. **The Romance Lands and Barbary.** By ELISEE RECLUS, author of the "Nouvelle Géographie Universelle."
4. **Central Europe.** By Dr. JOSEPH PARTSCH, Professor of Geography in the University of Breslau.
5. **Africa.** By Dr. J. SCOTT KELTIE, Secretary of the Royal Geographical Society; Editor of "The Statesman's Year-Book."
6. **The Near East.** By D. G. HOGARTH, M. A., Fellow of Magdalen College, Oxford; Director of the British School at Athens; Author of "A Wandering Scholar in the Levant."
7. **The Russian Empire.** By Prince KRAPOTKIN, author of the articles "Russia" and "Siberia" in the *Encyclopædia Britannica*.
8. **The Far East.** By ARCHIBALD LITTLE.
9. **India.** By Sir T. HENGERFORD HOLBICH, K. C. I. E., C. B., R. E., Superintendent of Indian Frontier Surveys.
10. **Australasia and Antarctica.** By Dr. H. O. FORBES, Curator of the Liverpool Museum; late Curator of the Christ Church Museum, N. Z.; Author of "A Naturalist's Wanderings in the Eastern Archipelago."
11. **North America.** By Prof. I. C. RUSSELL, University of Michigan.
12. **South America.** By Prof. JOHN C. BOURNER, Vice-President Leland Stanford Junior University.

Maps by J. G. BARTHOLOMEW.

**D. APPLETON & CO., Publishers,**  
NEW YORK.

IMPORTANT ANNOUNCEMENT!

THE  
INTERNATIONAL  
GEOGRAPHY.

The last few years have proved so rich in geographical discoveries that there has been a pressing need for a *résumé* of recent explorations and changes which should present in convenient and accurate form the latest results of geographical work. The additions to our knowledge have not been limited to Africa, Asia, and the Arctic regions, but even on our own continent the gold of the Klondike has led to a better knowledge of the region, while within a short time we shall have much more exact geographical information concerning the numerous islands which make up the Philippines. The want which is indicated will be met by *The International Geography*, a convenient volume for the intelligent general reader, and the library which presents expert summaries of the results of geographical science throughout the world at the present time.

Seventy authors, all experts, have collaborated in the production of *The International Geography*. The contributors include the leading geographers and travelers of Europe and America. The work has been planned and edited by Dr. H. R. MILL, who also wrote the chapter on The United Kingdom. Among the authors are :

Professor W. M. DAVIS (The United States),  
Dr. FRIDTJOF NANSEN (Arctic Regions),  
Professor A. KIRCHHOFF (German Empire),  
Mr. F. C. SKLOUS (Rhodesia),  
Professors DE LAPPARENT and RAVENEAU (France),  
Sir CLEMENTS R. MARKHAM, F. R. S. (Ecuador, Bolivia, and Peru),  
Sir JOHN MURRAY, F. R. S. (Antarctic Regions),  
Count PERIL (German Colonies),  
Mr. JAMES BRYCE, M. P. (The Boer Republics),  
Sir H. H. JOHNSTON, the late Sir LAMBERT PLAYFAIR,  
Sir F. J. GOLDSMID, Sir MARTIN CONWAY,  
Sir GEORGE S. ROBERTSON, Sir WILLIAM MACGREGOR,  
Sir CHARLES WILSON, F. R. S. ; the Hon. D. W. CARNEGIE,  
Mrs. BISHOP, Dr. A. M. W. DOWNING, F. R. S. ;  
Dr. J. SCOTT KELTIE, and  
Mr. G. G. CHISHOLM, the editor of the *Times Gazetteer*.

The book is illustrated by nearly five hundred maps and diagrams, which have been specially prepared. It is designed to present in the compact limits of a single volume an authoritative conspectus of the science of geography and the conditions of the countries at the end of the nineteenth century.

**D. APPLETON & CO., Publishers,**  
72 Fifth Avenue, New York.

---

# DOUBLEDAY & McCLURE CO.,

141-155 East 25th Street, New York.

---

## The United States of Europe. W. T. Stead.

ON THE EVE OF THE PARLIAMENT OF PEACE.

Mr. Stead's recent talks with the Czar and with all the great European statesmen lend much value to this timely review of current politics, written with special reference to the Russian Peace Rescript and American "Expansion." It covers such pertinent matters as America's task in Cuba and the Philippines, the "Chinese Puzzle," South African Problems, the Fashoda Muddle, the Concert of Europe and its work in Crete and Candia, and so on, with many suggestive forecasts.

Size,  $5\frac{1}{2} \times 8\frac{1}{4}$ ; pages, 468; over 100 portraits, maps, and illustrations; binding, cloth. Price, \$2.00.

## Sketches in Egypt. Charles Dana Gibson.

"Egypt," says Mr. Gibson, "has sat for her likeness longer than any other country." The recent important events that have turned all eyes toward the Upper Nile have not disturbed in the least the ancient composure and serenity of the Land of the Pharaohs, and few countries offer such a tempting field to the artistic pen. Mr. Gibson's forceful and suggestive drawings are well reinforced by his written impressions—more complete than he has ever before published—and the whole makes up a uniquely interesting record, from an artist who occupies a peculiar position among us. It is the real Egypt from a new standpoint. No pains have been spared to produce a true art work, giving really adequate presentations of Mr. Gibson's drawings.

Size,  $7\frac{1}{4} \times 10\frac{1}{2}$ ; cloth decorated; pages, 150; type, 12 point. Regular edition, \$3.00 net. Edition de Luxe, 250 signed and numbered copies, each accompanied by a portfolio containing art proofs of ten of the most important pictures, on Japan silk tissue and mounted on plate paper suitable for framing. Price per copy, \$10.00 net. AS SOON AS ACTUALLY PUBLISHED THE PRICE ON ALL DE LUXE COPIES NOT SUBSCRIBED FOR WILL BE RAISED.

## From Sea to Sea. Rudyard Kipling.

35th THOUSAND.

This is an authorized edition of the collected letters of travel which Mr. Rudyard Kipling has written at various times between 1880 and 1898, and has just edited and revised. It includes hitherto unpublished matter, as well as an accurate text of the "American Notes," with "Letters of Marque," "The City of Dreadful Night," "The Smith Administration," etc., etc.

Even Mr. Kipling never wrote anything more entirely irresistible than are, for instance, his letters on Japan. The ludicrousness of the Japanese "heavy cavalry," the fascinating O-Toyo, the cherry blossoms, and the wonderful art which permeates the daily life of natural Japan—all these things become permanent in the reader's mind and can never be forgotten; and they show a side of the author which is not at all prominent in most of his other work.

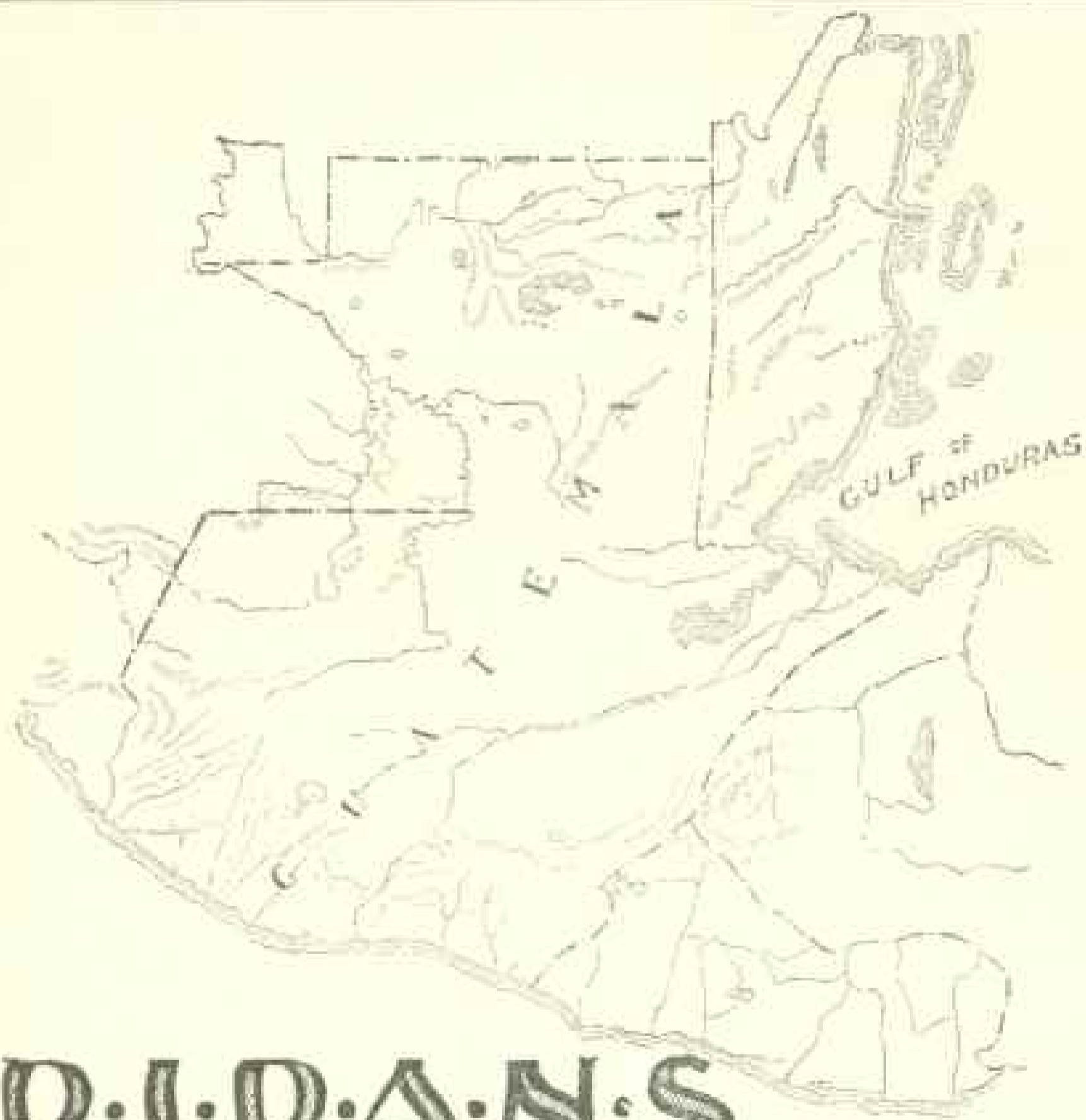
Size,  $5 \times 7\frac{1}{2}$ ; two volumes in box; pages, 860; type, 10 point; binding, cloth. Price, \$2.00.

# The American Anthropologist.

The only American magazine devoted to the science of Anthropology ; published at the National Capital. No one interested in anthropology in any of its branches can afford to be without it. *Subscribe today.*

Handsomely Printed and Illustrated. Published Quarterly. Four Dollars a Year.

ADDRESS: THE AMERICAN ANTHROPOLOGIST,  
G. P. Putnam's Sons, 27 and 29 West 23d Street, New York City.



## R·I·P·A·N·S

A practical journalist, long a member of the staff of the Washington Evening Star, resigned his position to go to Guatemala. Before he left Washington he had been a firm believer in the medicinal qualities of Ripans Tablets, and took a lot of them with him to Guatemala, where he earned the friendship of the captain of the steamer, which sails from San Francisco and stops at ports in Central America, by making known to him the marvellous virtues of R-I-P-A-N-S, the tried and tested wonder of the century. He often dilates upon the captain's enthusiasm about the Tablets and asserts that the people of the tropics suffer terribly from indigestion, and that the Tablets are now known most favorably throughout Central America. Ripans Tablets quiet the nerves, compose the mind, allay irritation, and bring repose. One gives relief.

WANTED—A case of bad health that R-I-P-A-N-S will not benefit. They banish pain and prolong life. One gives relief. Note the word R-I-P-A-N-S on the package and accept no substitute. R-I-P-A-N-S, 10 for 3 cents, or twelve packets for 40 cents, may be had at any drug store. Ten samples and one thousand testimonials will be mailed to any address for 3 cents, forwarded to the Ripans Chemical Co., No. 14 Spruce St., New York.

# LECTURE COURSES

OF THE

## NATIONAL GEOGRAPHIC SOCIETY.

The program of the lectures for each month and all other announcements by the Society will be published regularly in the NATIONAL GEOGRAPHIC MAGAZINE.

### THE POPULAR COURSE,

delivered in the

FIRST CONGREGATIONAL CHURCH, TENTH AND G STREETS NORTHWEST,

on alternate Friday evenings at 8 o'clock.

January	5.—British South Africa and the Transvaal . . . . .	Col. F. F. HILDER, Bureau of American Ethnology.
January	12.—The Samoan Islands . . . . .	Mr EDWIN MORGAN, Secretary Samoan Commission.
January	26.—The More Civilized Filipinos . . . . .	Hon. DEAN C. WORCESTER, Of the Philippine Commission.
February	9.—Explorations on Yangste Kiang . . . . .	Mr WM. BARCLAY PARSONS, C. E. Surveyor of the railway route through the Yangste Kiang valley.
February	23.—From the Andes through Bolivia and Back . . . . .	Hon. WM. HERRON CURTIS, Ex-Director of the Bureau of American Republics.
March	9.—Manchuria . . . . .	Mr M. SERGEY FRIEDL, C. E.
March	23.—The Venezuelan Boundary . . . . .	Mr MARCUS BAKER.
	* The International Geographic Congress . . . . .	Gen. A. W. GREELY, U. S. A.
	* The Missions of California . . . . .	Mr J. STANLEY-BROWN.
	* Cuba . . . . .	Mr GEORGE KENNAN.
	* Presidential Address . . . . .	Dr ALEXANDER GRAHAM BELL.

\* The date to be announced later.



## THE TECHNICAL COURSE,

delivered in the

ASSEMBLY HALL OF COLUMBIAN UNIVERSITY, FIFTEENTH AND H STREETS  
NORTHWEST,

on Friday evenings at 8.15 o'clock.

January 19.—The Black Hills of South Dakota . . . . .	Mr N. H. DARTON, U. S. Geological Survey.
February 2.—Explorations around the Arctic Circle . . . . .	Dr FRANK RUSSELL, Harvard University.
February 16.—How Geographic Environment has Shaped American History, Mr J. W. RIDWAY, Geographer.	
March 2.—The Geographic Distribution of Seed Plants . . . . .	Prof. JOHN M. COULTER, Chicago University.
March 16.—The Roman Forum . . . . .	Prof. MITCHELL CARROLL, Columbian University.
March 30.—Subject not yet announced . . . . .	Dr WM. M. DAVIS, Harvard University.
* The Dykes of Holland . . . . .	GERARD H. MATHERS, U. S. Geological Survey.
* The Floods of the Ohio and Mississippi Valleys . . . . .	H. C. FRANKENFIELD, U. S. Weather Bureau.

\* The date to be announced later.

## THE LENTEN COURSE.

The subject of this course is THE GROWTH OF NATIONS, as illustrated by the geographic and social development of leading European nations. This course of six lectures has been projected with the view of bringing out the elements of national power, and emphasizing the importance of individual character and of natural conditions in shaping national growth. The course will be complementary to that of last season on "The Growth of the United States." The lectures will be delivered in

COLUMBIA THEATER, F STREET NEAR TWELFTH,

4.20 to 5.30 p. m., on Tuesday afternoons, during March and April.

March 6.—The Netherlands . . . . .	Professor J. HOWARD GORE, Columbian University.
(With a General Introduction by the President.)	
March 13.—France . . . . .	Professor JEAN C. BRACQ, Vassar College.
March 21.*—Austria-Hungary . . . . .	Professor WILLIAM Z. RIPLEY, Massachusetts Institute of Technology.
March 27.—Germany . . . . .	Professor JOHN L. EWELL, Harvard University.
April 3.—England . . . . .	Dr EDWIN D. MEAD, Editor of the New England Magazine.
April 10.—Russia . . . . .	Professor EDWIN A. GROSVENOR, Amherst College.

\* Prof. Ripley's lecture on Austria-Hungary will be delivered on Wednesday, March 21, at the usual hour.



# SOUTHERN RAILWAY

GREATEST SOUTHERN SYSTEM.

TO ALL POINTS SOUTH, SOUTHEAST, AND SOUTHWEST.

Through Pullman Drawing Room Sleeping Cars from New York and Washington to New Orleans, Memphis, Port Tampa, Jacksonville, Augusta, and Intermediate Points—First-Class Day Coaches—Dining Car Service.

Fast Trains for the SOUTH leave Washington Daily at 11.15 A. M., 9.50 P. M., and 10.45 P. M.

Through Tourist car on the 10.45 P. M. Train every Monday, Wednesday, and Friday for Texas, Arizona, and California points, without change.

Direct line to the Summer Resorts in Virginia and the Carolinas and the Winter Resorts of Florida, Gulf Coast, Texas, Mexico, and California.

Direct Through Car Line to and from Asheville, Hot Springs, and other Western North Carolina points—"THE LAND OF THE SKY."

The "New York and Florida Limited," the finest train in the world, will resume service January 16, 1900, leaving Washington at 6.35 P. M. daily except Sunday. Solid train to Florida. Dining Car Service.

For Map Folders, Winter Homes Guide Book, and Book on "ASHEVILLE AND THEREABOUTS" write to—

A. S. THWEATT, Eastern Passenger Agent, 271 Broadway, New York, N. Y.  
 J. C. HORTON, Passenger Agent, 201 E. Baltimore Street, Baltimore, Md.  
 L. S. BROWN, General Agent, 705 Fifteenth St. N. W., Washington, D. C.  
 W. H. DOLL, Passenger Agent, Norfolk, Va.

S. H. HARDWICK, Assistant General Passenger Agent, Atlanta, Ga.  
 C. A. HENSCOTER, Assistant General Passenger Agent, Chattanooga, Tenn.  
 W. H. TAYLOR, Assistant General Passenger Agent, Louisville, Ky.

J. M. CULP, Traffic Manager.

W. A. TURK, General Passenger Agent,  
 WASHINGTON, D. C.

## The Mutual Life Insurance Co.

OF NEW YORK,

RICHARD A. McCURDY, President,

Is the Largest Insurance Company in the World.

The Records of the Insurance Department of the State of New York SHOW THAT The Mutual Life

Has a Larger Premium Income	-	-	-	(\$39,000,000)
More Insurance in Force	-	-	-	(\$918,000,000)
A Greater Amount of Assets	-	-	-	(\$235,000,000)
A Larger Annual Interest Income	-	-	-	(\$9,000,000)
Writes More New Business	-	-	-	(\$136,000,000)
And Pays More to Policy-holders	-	-	-	(\$25,000,000 in 1896)

THAN ANY OTHER COMPANY.

It has paid to Policy-holders since  
 its organization, in 1843, } - - \$437,005,195.29

ROBERT A. GRANNISS, Vice-President.

WALTER R. GILLETTE, General Manager.

FREDERIC CROWWELL, Treasurer.

ISAAC F. LLOYD, Second Vice-President.

EMORY McCLINTOCK, Actuary.

WILLIAM J. EASTON, Secretary.

# SPECIAL ANNOUNCEMENT.

The NATIONAL GEOGRAPHIC MAGAZINE has a few unbound volumes for the years 1896, 1897, and 1898. Each volume contains numerous maps and illustrations and much valuable geographic matter. It is impossible to give the contents of each volume, but the following subjects show their wide range and scope:

**Vol. VII, 1896:** Russia in Europe, by the late Hon. Gardiner G. Hubbard; The Scope and Value of Arctic Exploration, by Gen. A. W. Greely, U.S.A.; Venezuela, Her Government, People, and Boundary, by William E. Curtis; The So-called Jeanette Relics, by Wm. H. Dall; Nansen's Polar Expedition, by Gen. A. W. Greely, U.S.A.; The Submarine Cables of the World (with chart 40 x 30 inches); Seriland, by W. J. McGee and Willard D. Johnson; The Discovery of Glacier Bay, Alaska, by E. R. Scudmore; Hydrography in the United States, by F. H. Newell; Africa since 1888, by the late Hon. Gardiner G. Hubbard; The Seine, The Meuse, and The Moselle, by Prof. Wm. M. Davis; The Work of the U. S. Board on Geographic Names, by Henry Gannett; A Journey in Ecuador, by W. B. Keer; Geographic History of the Piedmont Plateau, by W. J. McGee; The Recent Earthquake Wave on the Coast of Japan, by E. R. Scudmore; California, by Senator Geo. C. Perkins; The Witwatersrand and the Revolt of the Uitlanders, by George F. Becker; The Sage Plains of Oregon, by F. V. Coville.

**Vol. VIII, 1897:** The Gold Coast, Ashanti and Kumassi, by Geo. K. French; Crater Lake, Oregon, by J. S. Diller; Storms and Weather Forecasts, by Willis L. Moore; Rubber Forests of Nicaragua and Sierra Leone, by Gen. A. W. Greely, U.S.A.; A Summer Voyage to the Arctic, by G. R. Putnam; A Winter Voyage through the Straits of Magellan, by the late Admiral R. W. Meade, U.S.N.; Costa Rica, by Señor Ricardo Villafranca; The National Forest Reserve, by F. H. Newell; The Forests and Deserts of Arizona, by B. E. Fernow; Modification of the Great Lakes by Earth Movement, by G. K. Gilbert; The Enchanted Mesa, by F. W. Hodge; Patagonia, by J. B. Hatcher; The Washington Aqueduct and Cabin John Bridge, by Capt. D. D. Gaillard, U.S.A.

**Vol. IX, 1898:** Three Weeks in Hubbard Bay, West Greenland, by Robert Stein; The Modern Mississippi Problem, by W. J. McGee; Dwellings of the Saga-Time in Iceland, Greenland, and Vineland, by Cornelia Horsford; Articles on Alaska, by Gen. A. W. Greely, U.S.A., Hamlin Garland, E. R. Scudmore, Prof. Wm. H. Dall, and others; on Cuba, by Robert T. Hill, Frank M. Chapman, John Hyde, and Henry Gannett; on the Philippines, by Dean C. Worcester, Col. F. F. Hilder, John Hyde, and Charles E. Howe; American Geographic Education, by W. J. McGee; Origin of the Physical Features of the United States, by G. K. Gilbert; Geographic Work of the General Government, by Henry Gannett; Papagueria, by W. J. McGee; The Bitter Root Forest Reserve, by R. U. Goode; Lake Chelan, by Henry Gannett; The Geospheres, by W. J. McGee; Sumatra's West Coast, by D. G. Fairchild; The Five Civilized Tribes in the Survey of Indian Territory, by C. H. Fitch; Cloud Scenery of the High Plains, by Willard D. Johnson; Atlantic Coast Tides, by M. S. W. Jefferson.

Each volume may be had for \$2.00. To obtain any of the above mentioned articles, send 25 cents in stamps, indicating merely the title of the article desired.

107-108 Corcoran Building, Washington, D. C.

For an excellent description of the TRANSVAAL, of the BOERS and the UITLANDERS, send for number 11 of volume 7, NATIONAL GEOGRAPHIC MAGAZINE. By mail for 25 cents each.

---

For the most complete, authoritative, and attractive publications on the PHILIPPINES, send for the June, 1898, and February, 1899, numbers of the NATIONAL GEOGRAPHIC MAGAZINE, containing numerous maps and illustrations. By mail for 25 cents each.

---

For a chart of the world, 48 by 30 inches, showing all CABLE AND OVERLAND TELEGRAPH LINES, and also COALING, DOCKING, AND REPAIRING STATIONS, with explanatory article, send for number 3 of volume 7, NATIONAL GEOGRAPHIC MAGAZINE. By mail for 25 cents.