


ANTIQUES AND THEIR VALUES



ART NOUVEAU-DECO





Digitized by the Internet Archive
in 2022 with funding from
Kahle/Austin Foundation

ANTIQUES AND THEIR VALUES



ART NOUVEAU - DECO

COMPILED BY TONY CURTIS

3/19
STRAND PRICE
\$ 2.00

While every care has been taken in the compiling of information contained in this volume the publishers cannot accept any liability for loss, financial or otherwise, incurred by reliance placed on the information herein.

All prices quoted in this book are obtained from a variety of auctions in various countries and are converted to dollars at the rate of exchange prevalent at the time of sale.

ISBN 0-86248-011-6

Copyright © Lyle Publications MCMLXXXI

Published by Lyle Publications, Glenmayne, Galashiels, Selkirkshire, Scotland.

No part of this book(issue) may be reproduced in any form by print, photoprint, microfilm or any other means without written permission from the publisher unless for review purposes.

INTRODUCTION

This book is one of a series specially devised to aid the busy professional dealer in his everyday trading. It will also prove to be of great value to all collectors and those with goods to sell, for it is crammed with illustrations, brief descriptions and valuations of hundreds of antiques.

Every effort has been made to ensure that each specialised volume contains the widest possible variety of goods in its particular category though the greatest emphasis is placed on the middle bracket of trade goods rather than on those once-in-a-lifetime museum pieces whose values are of academic rather than practical interest to the vast majority of dealers and collectors.

This policy has been followed as a direct consequence of requests from dealers who sensibly realise that, no matter how comprehensive their knowledge, there is always a need for reliable, up-to-date reference works for identification and valuation purposes.

When using your Antiques and their Values Book to assess the worth of goods, please bear in mind that it

would be impossible to place upon any item a precise value which would hold good under all circumstances. No antique has an exactly calculable value; its price is always the result of a compromise reached between buyer and seller, and questions of condition, local demand and the business acumen of the parties involved in a sale are all factors which affect the assessment of an object's 'worth' in terms of hard cash.

In the final analysis, however, such factors cancel out when large numbers of sales are taken into account by an experienced valuer, and it is possible to arrive at a surprisingly accurate assessment of current values of antiques: an assessment which may be taken confidently to be a fair indication of the worth of an object and which provides a reliable basis for negotiation.

Throughout this book, objects are grouped under category headings and, to expedite reference, they progress in price order within their own categories. Where the description states 'one of a pair' the value given is that for the pair sold as such.

The publishers wish to express their sincere thanks to the following for their kind help and assistance in the production of this volume:

JANICE MONCRIEFF
NICOLA PARK
CARMEN MILIVOYEVICH
ELAINE HARLAND
MAY MUTCH
MARGOT RUTHERFORD
JENNIFER KNOX

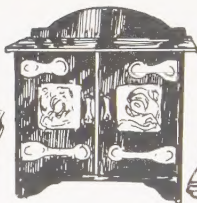
CONTENTS

Boxes	8	Figures	68
Bronze	9	Inkwells	69
Ashtrays	10	Jugs	69
Candelabrum	10	Liqueur Sets	70
Candlesticks	10	Miscellaneous	71
Dishes	11	Perfume Bottles	72
Inkwells	11	Plaques	74
Jardinières	11	Pots	74
Vases	12	Glass Vases	75
Bronze Figures	12	Daum	79
Chiparus	18	Galle	80
Preiss	19	Lalique	81
Car Mascots	20	Loetz	82
China	21	Tiffany	83
Bowls	21	Webb	84
Chargers	22	Hair Combs	85
Dishes	23	Ivory	86
Figures	24	Jewellery	87
Jardinières	26	Lamps	89
Jugs	28	Ceiling Lights	92
Tea & Coffee Sets	29	Floor Lamps	94
Vases	30	Marble	95
Clocks	33	Mirrors	96
Grandfather	33	Miscellaneous	98
Mantel	34	Pewter	99
Sets	38	Radios & Jukeboxes	103
Copper & Brass	39	Silver	104
Furniture	42	Biscuit Barrels	104
Beds	42	Bowls	104
Bookcases	42	Boxes	105
Buffets	42	Buckles	105
Cabinets	43	Candlesticks	106
Chairs	45	Centrepieces	107
Chests	49	Cigarette Boxes	107
Couches	49	Cigarette Cases	107
Desks	50	Cocktail Shakers	108
Display Cabinets	51	Condiments	108
Dressing Tables	53	Cups	109
Pianos	54	Dishes	110
Screens	54	Flatware	112
Sideboards	55	Inkstands	114
Stands	56	Jugs	115
Suites	57	Miscellaneous	116
Tables	59	Tazzas	117
Wardrobes	63	Teapots	117
Glass	64	Tea & Coffee Sets	118
Bowls	64	Toilet Requisites	120
Candlesticks	66	Vases	121
Cups	66	Stoves	122
Dishes	67	Trays	122
		Wood	123

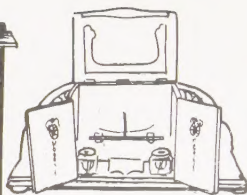
BOXES



Art Nouveau glove box, circa 1890, of finely grained red leather, 13½ in. long. \$85 £40



Art Nouveau smoker's cabinet with brass facings, circa 1920, 1ft. 9 in. high. \$135 £60



Inlaid oak stationery box with fitted interior, circa 1905. \$135 £60



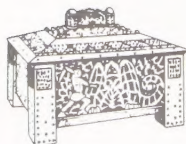
Primavera 'Longwy' crackle-glazed pottery box and cover, 9.5cm. diam, 1920's. \$190 £85



Reco Capey carved ebony box and cover, 21cm. high. \$700 £310



'Intarsia' brass mounted and inlaid wood casket, circa 1900, 14cm. long. \$700 £310



Bavarian brass and walnut jewel coffer, circa 1900, 30.8cm. wide. \$745 £340



Madurell gilt metal casket, circa 1900, 37.5cm. long. \$1,015 £450



Good Galle marquetry casket, 1890's, 28.5cm. high. \$5,400 £2,400



Art Nouveau bronze wall panel, 8½ x 5¼in. \$90 £40



One of a set of five Art Nouveau bronze plaques. \$150 £65



L. Kann gilt bronze mug with cylindrical body, 10cm. high, circa 1900. \$240 £110



Heyner bronze letter opener, 30cm. long, circa 1900. \$370 £165



One of a pair of Leon Jallot Art Deco bronze appliques, 19.3cm. high, circa 1925. \$370 £165



Art Nouveau gilt bronze seal, 8.3cm. high, circa 1900. \$395 £180



One of a pair of patinated bronze Hagenauer bookends, 20th century, 16.5cm. high. \$615 £280



Lalique bronze medalion, 6cm. diam., circa 1900. \$655 £300



Gilt bronze group of a bobsleigh team, circa 1936, 28.5cm. high. \$1,295 £575

**BRONZE
ASHTRAYS**



1930's bronzed aeroplane ashtray. \$55 £25



An Art Deco bronze, ivory and onyx ashtray. \$300 £135



Art Deco coloured bronze figure, mounted on an ashtray, 9in. high. \$370 £165

CANDELABRUM



Tiffany four-branch bronze candelabrum, 12¼in. high. \$550 £250



Art Nouveau bronze candelabrum, designed by G. de Feure, circa 1900, 33cm. high. \$1,350 £600



Bronze two-branched candelabrum, circa 1900, 19¼in. high. \$1,965 £875

CANDLESTICKS



Bronze and Favrite glass candlestick, by Tiffany, 8in. high. \$605 £270



One of a pair of Tiffany Studios gilt bronze candlesticks, circa 1900, 24cm. high. \$985 £450



One of a pair of Tiffany Studios gilt bronze candleholders, circa 1900, 47.5cm. high. \$1,620 £720

DISHES

BRONZE



An Art Nouveau bronze bowl with flowers in relief, 24cm. long. \$135 £60

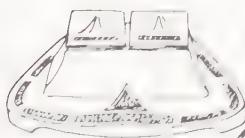


Art Nouveau gilt bronze dish, by A. Vibert, circa 1900, 15.5cm. high.



Stylish WMF polished bronze stemmed dish, circa 1910, 19cm. high. \$745 £330

INKWELLS



Art Nouveau solid bronze inkwell, circa 1900, 7cm. long. \$70 £30

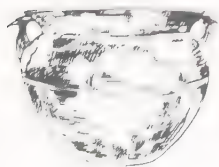


Obriol parcel gilt bronze Art Nouveau inkstand and pen tray, circa 1900, 25cm. wide. \$615 £240



Automobiles Ferman, a bronze figure of Daedalus on a marble base fitted with two inkwells, by G. Colin, 1907. \$1,170 £520

JARDINIÈRES



Bronze jardiniere with Art Nouveau features, 30cm. high. \$145 £65



Gilt metal Art Nouveau jardiniere, German, circa 1900, 72cm. wide. \$970 £430



One of a pair of Art Nouveau gilt bronze jardinières, circa 1900, 16 1/2in. high. \$1,870 £830

**BRONZE
VASES**



One of a pair of late 19th century bronze vases.
\$190 £85



Good Gurschner bronze vase, 18cm. high, circa 1910. \$395 £180



Hagenauer bronze vase, circa 1910, 11.5cm. high.
\$420 £185



Japanese Art Nouveau Zeit Geist cloisonne vase, with damaged base, 46cm. high.
\$450 £200



Paignant polychrome gilt bronze vase, circa 1900, 20.25cm. high.
\$765 £340



Wiener Werkstatte bronze vase, circa 1910, 8cm. high.
\$790 £350



Gurschner bronze vase, circa 1910, of oval section and flared rim. \$920 £420



Korschann bronze vase, 31.5cm. high, circa 1900. \$990 £440



One of a pair of patinated and electroplated copper Christofle vases, 26.5cm. high, 1920's. \$1,045 £465



1930's Art Deco dancing figure on a stepped base. \$115 £50



French cast 'Smoking Boy' bust, circa 1900-1910. \$170 £75



An Art Nouveau coloured metal figure of a girl and a pillar, on onyx base, 11in. high. \$225 £100



A small late 19th century bust of Judith, 7in. high. \$280 £125



Art Deco French spelter figure on tri-coloured marble base. \$295 £130



Bronze and ivory Art Deco figure. \$315 £140



Limousin bronze figure, 1930's, 56cm. high \$330 £145



Art Deco metal figure, by Rischmann, 22 1/2 in. high. \$495 £220



Late 19th century gilt bronze and marble figure, after J Causse, 20in. high. \$495 £220

**BRONZE
FIGURES**



Stylish bronze figure of a vulture, 20cm. high, 1920's. \$565 £250



Large Art Deco spelter group, 32in. wide, Paris, \$640 £285



Bronze and ivory figure of a young woman, 26.75cm. high. \$675 £300



Patinated bronze figure of a naked girl, Art Deco style by K. Perl, 39cm. high. \$695 £310



Genarelli silvered bronze figure, 28.5cm. high, 1920's. \$730 £325



Art Deco bronze nude dancer, signed Bouraine, 23in. high. \$730 £325



Rigot bronze and ivory figure, 1920's, 35cm. high. \$755 £335



Art Deco ivory and gilt bronze figure, 13 1/2 in. high, signed L. Sosson. \$790 £350



Barthelemy bronze and ivory dancing girl, 26.5cm. high. \$810 £360

FIGURES

BRONZE



Art Deco bronze archer
\$810 £360



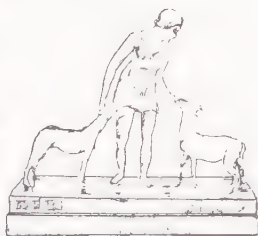
Art Deco bronze group,
by Gemaretti, 22in. wide.
\$870 £385



Bronze and ivory figure of
a dancing girl, inscribed
Jose Descomps, 43cm. high.
\$900 £400



Italian bronze figure of a
dancer, signed G. Beneduce.
\$900 £400



Art Deco group in silvered
bronze. \$900 £400



Bouraine silvered bronze
figure, 1920's, 47.5cm.
high \$900 £400



Art Deco bronze figure,
signed Dyson Smith, 1927.
\$970 £430



Raoul Larche bronze
bust, circa 1900, 47cm.
high. \$1,015 £450



Art Deco can-can figure on
a marble base \$1,080 £480

**BRONZE
FIGURES**



Large gilt bronze and ivory figure, probably by Duvernet, 19in. high.

\$1,190 £550



Mechanical bronze figure 'Bare on Bear'. \$1,285 £570



Bronze and ivory figure of a dancer, by Philippe, 16 1/2 in. high.

\$1,970 £875



Austrian Hagenauer chrome lady with ebony panther, 1930

\$2,025 £900



Barrias gilt bronze figure, 1890's, 43cm. high

\$2,700 £1,200



Good Bouraine green patinated bronze figure, 52cm. high, 1930's.

\$2,590 £1,150



Colinet bronze and ivory dancing girl, 43.25cm. high.

\$2,700 £1,200



A bronze and ivory group of a musician and dancer, by L. Hely, 54.5cm. wide.

\$3,500 £1,600



A bronze figure of an athlete, by P. Le Faguays, 73cm. high.

\$3,500 £1,600



Stylish Guigner Art Deco gilt bronze group, 54.75cm. high, 1930's. \$3,825 £1,700



Renaud gilt bronze figure of a fairy, 1901, 27cm. high.

\$4,275 £1,900



Flamand bronze Art Nouveau figure of a woman, 59cm. high, circa 1900.

\$7,650 £3,400



Bronze and ivory figure by Colinet 'Valkyrie off towards the unknown'.

\$7,775 £3,600



Gilt bronze figure of a torch bearer, by Agathon Leonard. \$8,500 £3,935



Good Philippe bronze and ivory group, 1920's, 48cm. wide. \$9,450 £4,200



Large Philippe bronze and ivory figure, 64.5cm. high, 1920's. \$11,250 £5,000



One of a series of 'Scarf Game' dancers, circa 1901. \$15,750 £7,000

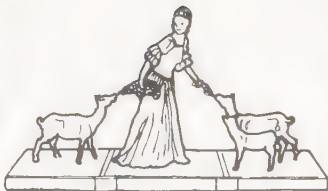


Gilded bronze figure of the dancer Loie Fuller, 17.5in high \$19,125 £8,500

**BRONZE FIGURES
CHIPARUS**



Bronze and ivory figure,
by H. Chiparus Etling.
Paris, circa 1920, 7 1/2 in
high. \$925 £410



Painted metal Chiparus group
of woman and goats.
\$1,690 £750



Chiparus bronze and
ivory figure of a young
woman, 36.5cm. high.
\$2,250 £1,000



Chiparus bronze and ivory
figure, 41cm. high, 1920's.
\$2,700 £1,200



Bronze and ivory group
by D. H. Chiparus, 11 1/4 in.
high. \$3,150 £1,400



Bronze and ivory figure,
by D. H. Chiparus,
11 1/4 in. high. \$3,375 £1,500



Bronze and ivory figure of
a dancer, by Chiparus, 44cm.
high. \$4,500 £2,000



Chiparus bronze and
ivory figure, 58cm. high,
1920's. \$5,850 £2,600



Bronze and ivory figure, by
D. Chiparus. \$15,750 £7,000

PREISS



Preiss bronze and ivory figure of a schoolboy, 21cm. high \$1,575 £700



Preiss bronze and ivory figure, 20cm high, 1930's \$1,800 £800

BRONZE FIGURES



Art Deco bronze and ivory group of a horse with young girl attendant, on an onyx base, 1ft 3in wide, \$2,250 £1,000



Preiss figure of a standing girl in a casual dress, \$2,815 £1,250



Ivory and gilt bronze figure of a running girl, by F. Preiss, \$2,925 £1,300



'Con Brio' gilt bronze and ivory female figure, by F. Preiss, \$3,600 £1,600



Bronze and ivory figure of 'The Torch Dancer', by Preiss, 15 1/2 in. high, \$4,500 £2,000



'The Balloon Girl', by F. Preiss, on onyx base, \$6,750 £3,000



Bronze and ivory figure, by F. Preiss, 14 1/2 in. high, \$13,500 £6,000

CAR MASCOTS



Standing figure of the Esso man, 5 1/2 in. high, on a radiator cap. \$205 £90



Chromium plated Minerva. \$270 £120



Laliq Vitesse mascot. \$675 £300



Laliq cock's head desk ornament, circa 1925. 20.25cm. high \$945 £420



Laliq Dragonfly mascot. \$1,125 £500



'The Archer', a Laliq glass car mascot, 1930's. 13cm. high. \$1,270 £550



Laliq glass hawk car mascot, 19cm high, circa 1930 \$1,575 £700



Laliq glass car mascot, 1920's, 14cm wide \$2,475 £1,100



Laliq glass car mascot 'Spirit of the Wind', 1930's, 25.5cm. long. \$4,050 £1,800



A Devonmoor pottery earthenware bowl, with applied and incised decoration. \$45 £20



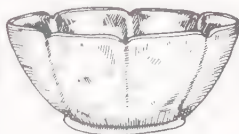
Unusual amphora glazed earthenware basket, circa 1910, 20.5cm. high. \$90 £40



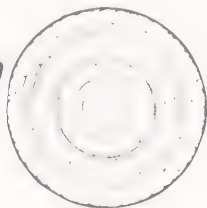
Ruskin eggshell pottery bowl, circa 1910. \$180 £80



Stoneware foliate bowl, by Charles Vyse, 7 1/2 in. diam. \$180 £80



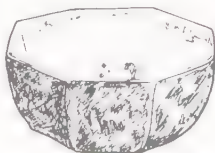
Stoneware foliate bowl, by Charles Vyse, with shaped rim, 7 1/2 in. diam. \$180 £80



Stoneware bowl, by Lucy Rie, 11 in. diam. \$250 £110



Moorcroft pottery bowl decorated with chrysanthemums. \$270 £120



Wedgwood Fairyland lustre ware bowl \$1,080 £480



Wedgwood Fairyland lustre bowl, 1920s, 11 in. diam. \$1,800 £800

CHINA CHARGERS



Early Fulham period De Morgan copper lustre small plate, 6 1/2 in. diam.
\$135 £60



De Morgan copper lustre small plate, 6 1/2 in. diam.
\$205 £90



Fulham period De Morgan ruby lustre charger, 11 in. diam.
\$325 £145



De Morgan copper lustre charger, 14 in. diam.
\$475 £210



De Morgan copper lustre charger, 14 in. diam.
\$595 £265



William De Morgan style cream glazed bowl, of the late Fulham period, 16 in. diam.
\$900 £400



One of a pair of early Martin Bros. wall plates, 13 in. diam.
\$1,350 £600



William De Morgan lustre plate decorated by Chas. Passanger, circa 1898, 1907.
\$1,465 £650



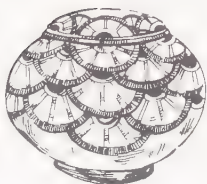
Clement Massier lustre charger, circa 1900, 48cm diam.
\$3,150 £1,400



Royal Dux figure, 9in. long,
6in. high. \$225 £100



De Morgan lustre dish,
by Chas. Passanger,
14 1/2 in. diam., 1888-97.
\$340 £150



Limoges enamelled pot and
cover, 1920's, 11.5cm., by
Sarlandie. \$405 £180



Royal Dux dish of two
lovers, circa 1910, 30.5cm.
high. \$560 £250



Turn Art Nouveau cera-
mic dish, Austrian, circa
1900, 44cm. long.
\$640 £285



William De Morgan saucer
lustre dish, Fulham period,
36cm. diam. \$855 £380



Pottery centrepiece of gon-
dola form, by Kataro
Shirayamadani, 41cm. long,
circa 1888. \$900 £400



A Zsolnay lustre dish,
30cm wide, circa 1900.
\$1,080 £480



Fine porcelain centrepiece,
37 1/2 in long, painted K P M.
\$2,475 £1,100

CHINA FIGURES



Royal Doulton figure of a Churchillian bulldog, circa 1940, 6in. high. \$150 £60



Poole pottery fish glazed in green with a black base, 17in. high. \$180 £80



Royal Doulton figure of a fox, 7in. high, circa 1937. \$180 £80



Paris porcelain figure of a woman, 31.8cm. high, circa 1920. \$160 £70



19th century Royal Dux group of a child playing with a dog. \$225 £100



Wiener Werkstatte glazed earthenware figure, circa 1910, 29cm. high. \$270 £120



Royal Dux Art Deco dancing lady \$370 £165



Unusual pair of Royal Dux 'clown' figures, 23.4cm high, circa 1910 \$470 £210

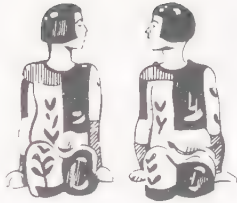


Issy high-fired porcelain figure, 1913, 44cm high \$495 £220

CHINA FIGURES



Rosenthal porcelain group of a young woman and a fawn, 34cm high \$540 £240



Pair of Goldscheider bookends, 1930's, 21cm. high \$620 £275



Boulogne crackle glazed pottery figure, 61cm high, 1920's. \$745 £330



Boulogne glazed pottery figure, 47.5cm high, 1925 \$845 £375



Meissen porcelain figure, 30.5cm high, 1930's \$845 £375



Royal Doulton figure of 'Miss 1927'. \$900 £400



Charles Vyse figure of Barnet Fair, circa 1933, 10 1/4 in. high, \$955 £425



Art Deco female figure, by Erdago, \$1,125 £500



One of a pair of Royal Dux busts of girls, circa 1910, 47.6cm and 48.8cm high \$1,620 £720

CHINA JARDINIERS



Royal Doulton art pot about 1902-22, 7½ in. wide x 8½ in. high. \$55 £25



Minton art pot, dating between 1895-1900, in a single shade of mint green, 8½ in. high. \$80 £35



Victorian hanging art pot, by the Watcombe Pottery Co., about 1867-1901, 7 in. high x 9 in. wide. \$100 £45



Art Deco pot, by Thos. Forester & Sons Ltd., Staffs., about 1930, 7 in. high x 8½ in. wide \$135 £60



A Doulton jardiniere stand in shades of green and brown \$180 £80



Attractive Art Nouveau Minton jardiniere, about 1900-08, 12½ in. high x 14½ in. wide \$250 £110



Doulton jardiniere with near matching stand. \$395 £175



A Victorian Bretby earthenware jardiniere and matching pedestal. \$450 £200



An Art Nouveau jardiniere and stand, by Bretby. \$450 £200

CHINA JARDINIERS



Large George Jones majolica jardiniere, 18½ in high, dated for 1877 \$520 £240



Martin Brothers jardiniere, 7½ in high, dated 1900, incised signature \$540 £240



Unusual Moorcroft Macintyre jardiniere, circa 1900, 7 in. high \$585 £260



Massive Liberty & Co. earthenware jardiniere, 76cm. diam., circa 1905 \$600 £265



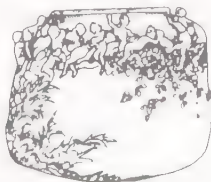
Doulton stoneware jardiniere and stand, 39½ in. high, circa 1900. \$730 £325



A decorative glazed ceramic jardiniere, circa 1900. \$810 £360



An Austrian glazed earthenware jardiniere and stand, circa 1905. \$1,010 £450



Large Carrier Belleuse earthenware jardiniere, circa 1900, 38.5cm high \$1,170 £520



Early 20th century large Doulton stoneware jardiniere and stand, 54½ in high \$2,250 £1,000

CHINA JUGS



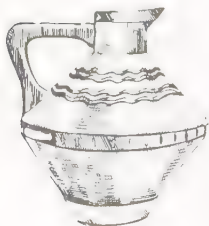
Royal Doulton floral toilet jug. \$35 £15



Porzellan-Manufaktur-Burgau porcelain coffee pot, 20cm high, circa 1910. \$160 £70



A Martinware jug of gourd shape 16.5cm high. \$180 £80



Cadinen glazed earthenware jug, 1910-20, 19.75cm high \$200 £90



Doulton stoneware silver mounted cycling jug and two beakers, circa 1900 \$325 £145



Doulton stoneware jug, 9in. high, circa 1900 \$450 £200



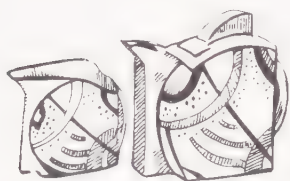
Massive Art Nouveau glazed earthenware jug circa 1900, 92.1cm. high. \$495 £220



Martin Brothers stone-ware jug, 9"an. high, in cised signature, dated 1895. \$540 £240



Moorcroft Flortanware jug, circa 1900, 8in. high \$585 £270



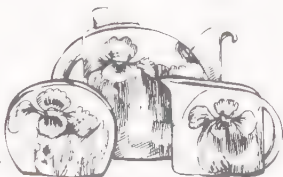
Attractive Clarice Cliff 'bizarre' teapot and cream jug, 1930's. \$250 £110



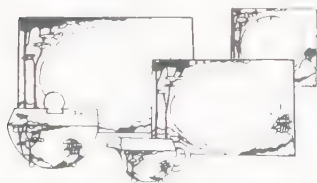
Part of a Clarice Cliff 'bizarre' tea service, twenty-four pieces, 1930's. \$270 £120



A Limoges porcelain coffee service, designed by Jean Luce, 1920's. \$475 £210



'Bizarre' painted glazed pottery breakfast set, 1930's. \$495 £220



Part of a Clarice Cliff dinner service of twenty-five pieces, 1930's. \$855 £380



Part of an eleven-piece Moorcroft coffee service in 'Hazledene' pattern. \$945 £420

CHINA VASES



Clarice Cliff 'bizarre' vase.
20.5cm. high, 1930's.
\$90 £40



Bretby pottery vase with
turquoise blue glazed
medallions. \$205 £90



Villeroy & Boch vase, circa
1910, 45.5cm. high.
\$250 £110



Austrian glazed earthenware
vase, circa 1910, 20.5cm
high. \$295 £130



Limoges porcelain vase, by
L. Bernardaud & Cie,
15.4cm high, circa 1923.
\$295 £130



Quimper Art Deco decorated
stoneware vase,
1920's, 18cm high.
\$305 £140



Moorcroft Flomanware vase,
circa 1900, 7 1/2 in. high.
\$305 £140



A Martiniware shaped
square vase, 1904, 12.5cm.
high. \$340 £150



Florian vase made at Macin-
square vases, circa 1893.
\$340 £150

CHINA VASES



Small Rozenberg vase, circa 1900, 11cm high, \$350 £155



Large Lachenal stoneware vase, circa 1900, 32cm. high, \$395 £180



A De Morgan lustre vase, decorated by Joe Juster, 27.5cm. high, \$395 £180



One of a pair of Doulton stoneware vases, 11 1/2 in high, circa 1905, \$405 £180



One of a pair of Moorcroft vases, 10 1/2 in high, circa 1916-21, \$400 £180



Rozenberg pottery vase with twin loop handles, circa 1900, 26.5cm high, \$495 £220



Metal mounted D'Argyl Art Deco decorated earthenware vase, 28cm. high, 1920's, \$540 £240



De Morgan copper lustre vase, 10in. high, \$605 £275



A Royal Copenhagen porcelain vase of double gourd shape, 21cm. high, \$610 £280

CHINA VASES



Mettlach vase, circa 1900-10, 40cm. high. \$720 £320



Delvaux Paris porcelain Art Deco vase, circa 1925, 31.5cm. high \$745 £330



Rare Moorcroft Florianware vase, dated 1899, 16in. high. \$945 £420



A Royal Copenhagen porcelain oviform vase and cover, designed by Ch. Thomsen, 21cm. high. \$1,150 £520



Wiener Werkstatte glazed earthenware triple vase, 23cm. high, circa 1910-20. \$1,440 £640



One of a pair of Wedgwood Fairyland lustre 'Candlemas' vases, 8 1/2 in. high, 1920's. \$2,140 £950



Rozenberg porcelain vase, circa 1890 \$2,250 £1,000



Jean Dunand eggshell lacquer vase, circa 1925, 23.5cm. high \$2,475 £1,100



Large Rene Buthaud pottery vase, circa 1925, 45cm. high \$2,885 £1,250

GRANDFATHER CLOCKS



An oak cased grand-mother musical chiming clock.

\$170 £75



Late 19th century Art Deco clock in an oak case.

\$305 £135



A stylish modernist clock circa 1930. 112cm. high, in black painted wood.

\$360 £160



Wrought iron long-case clock, circa 1920. 65 $\frac{1}{2}$ in. high.

\$745 £330



Late 19th century wickerwork long-case clock.

\$1,735 £770



Large mahogany chiming longcase clock, circa 1910. 101in. high.

\$3,600 £1,600



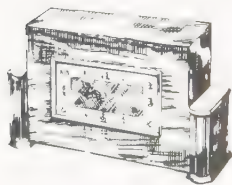
Edwardian chiming grandfather clock in a mahogany case, 9ft. tall \$4,050 £1,800



Large marquetry chiming clock, circa 1900. 105 $\frac{1}{2}$ in. high.

\$5,625 £2,500

MANTEL CLOCKS



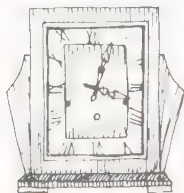
20th century walnut cased mantel clock. \$25 £10



Art Nouveau style oak cased mantel clock. \$80 £35



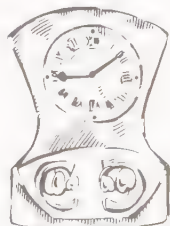
Art Deco mantel timepiece in marble case, by Maple & Co., Paris, 6 1/2 in. high. \$125 £55



'Enfield' mantel clock in well figured walnut case, 10 1/2 in. high, circa 1930. \$185 £80



Cast metal clock showing a racing cyclist, circa 1900, 18cm. high. \$140 £65



Liberty & Co. 'Tudric' pewter clock, after 1903, 17cm. high. \$250 £110



Art Nouveau clock, signed N. Bochín. \$270 £120



Massive marble clock, 1930's, 29 5cm. high. \$295 £130



Pewter and enamel clock, circa 1905, 14 25cm high. \$370 £170

MANTEL CLOCKS



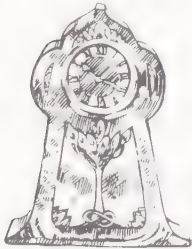
Silver plated French clock, depicting Loie Fuller, circa 1910. \$430 £190



Art Deco bronze and marble clock, 26cm. wide, 1920's. \$430 £190



Liberty & Co. 'Tudric' pewter and enamel clock, circa 1905, 25.5cm. high. \$430 £190



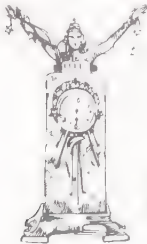
Small Liberty & Co. pewter and enamel clock, 19.75cm high, after 1903. \$475 £210



Art Deco mirror glass clock, 1930's, 33.75cm. long. \$560 £250



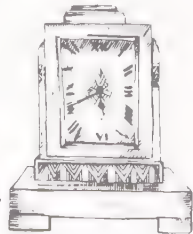
Art Nouveau wood clock, circa 1900, 35cm. high. \$585 £260



Clock case in green marble surmounted by a bronze figure, circa 1900, 39cm high. \$600 £265



Patinated metal and glass clock, 38cm. high, 1930's. \$630 £280



Silver and parcel gilt clock, by Goldsmiths & Silversmiths Co. Ltd, London, 1929, 13.5cm high. \$650 £290

MANTEL CLOCKS



Art Nouveau silvered metal clock case, circa 1900.
53cm high \$700 £310



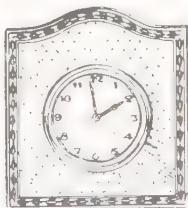
Laliqie frosted glass clock.
16cm. high, circa 1920
\$790 £350



Continental carved wood Art Nouveau clock case, circa 1900, 37.5cm. high.
\$855 £380



Liberty & Co. 'Cymric' silver and enamel clock, Birmingham, 1904, 8cm. high.
\$900 £400



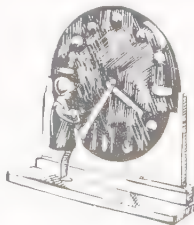
9 carat gold-cased mantel clock on easel support, Goldsmiths & Silversmiths Co. Ltd., circa 1912, 11.6cm. high. \$1,035 £460



Copper and satinised steel clock, 1930's, 31cm. high.
\$1,080 £480



Large Liberty & Co. 'Tudric' pewter and enamel clock, after 1903, 32cm. high.
\$1,295 £575



Press clock with marble base, 1930's, 37cm. high.
\$1,485 £660



Bronze and ormolu mantel clock, 12in. wide.
\$1,620 £720

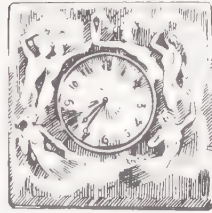
MANTEL CLOCKS



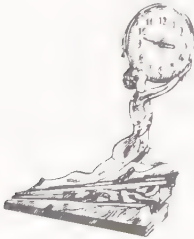
Liberty & Co. 'Tudric'
pewter and enamel clock,
circa 1903. 13.5cm. high
\$1,620 £720



Large Goldscheider Art
Nouveau terracotta clock,
circa 1900. 95cm. high.
\$2,050 £900



Lalique glass 'Siren' clock,
circa 1925. 27.5cm. high.
\$2,250 £1,000



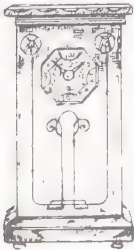
Preiss bronze and ivory
figure of a kneeling dancer
supporting a clock
\$2,700 £1,200



Liberty & Co. 'Cymric'
silver and enamel travelling
clock, 1903. 15.2cm.
high. \$3,150 £1,400



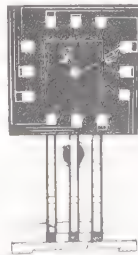
Viennese enamelled copper
clock, 39cm. high, circa
1910. \$3,715 £1,650



Inlaid mantel clock, designed
by Josef Olbrich, 1902,
35cm. high.
\$5,850 £2,600



Good Lalique glass clock,
'Le jour et la nuit', 38.75cm.
wide, 1920's.
\$11,250 £5,000



Domino clock by Chas.
Rennie Mackintosh, circa
1917. 10in. high.
\$18,000 £8,000

CLOCK SETS



An Art Deco soft metal clock set,
complete with side urns \$270 £120

Bronze figure on onyx clock set, 21 1/2 in.
long, circa 1920. \$450 £200

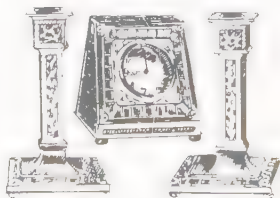


Late 19th century painted spelter and
onyx clock garniture \$575 £255

Art Nouveau patinated metal clock
garniture, circa 1900 \$1,000 £440



Art Deco clock set of unusual design
\$1,180 £525

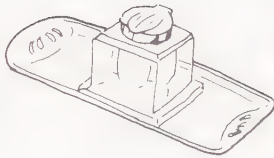


Enamel and gilt bronze clock set, by
Tiffany. \$1,485 £660

COPPER & BRASS



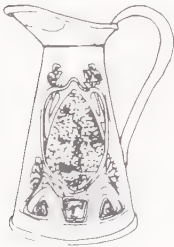
Brass 'man in the moon' dish, circa 1905 \$25 £10



Late 19th century brass inkstand with glass inkwell \$35 £15



Lighter made to commemorate the Great War, in the shape of a brass and copper book, 2in. high. \$35 £15



Brass water jug with Art Nouveau decoration, circa 1900. \$45 £20



Newlyn copper tea caddy, circa 1910. \$70 £30



Stylish brass jardiniere, about 1900, with three supports and pierced work band round the body \$70 £30



Newlyn copper rosebowl, 10½in. diam., circa 1910. \$90 £40



Newlyn School, copper cigar box, sold with a copper bowl, circa 1904 \$125 £55



Art Nouveau style brass and iron log container. \$125 £55

COPPER & BRASS



Art Nouveau brass coal bucket with lid and liner, circa 1895. \$125 £55



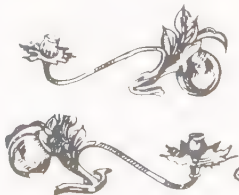
John Pearson copper dish, 17in. diam., circa 1904. \$125 £55



Art Nouveau design copper circular coal vase, 56cm. high. \$135 £60



Art Nouveau brass fire tongs 'companion set', circa 1880, 25in. high. \$170 £75



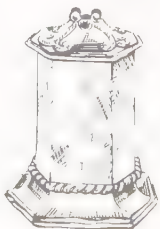
A pair of W. Benson brass candleholders, circa 1900. \$180 £80



One of a pair of copper candlesticks, signed Rathbone, 4 in high, circa 1910. \$250 £110



W. Benson copper and brass kettle and burner, 11½in. high, 1890's. \$260 £115



Copper and brass tobacco jar, by Omar Ramsden, circa 1925, 7½in. high. \$270 £120



One of a pair of Liberty & Co., brass candlesticks, 13.5cm. high, circa 1900. \$270 £120



English brass and copper covered pitcher, circa 1900. 15" in high \$340 £150



Artificer's Guild Ltd. electroplated copper rose-bowl and cover, circa 1920. 24.6cm diam. \$370 £170



One of a pair of Christopher Dresser brass candlesticks, 1880's. \$405 £180



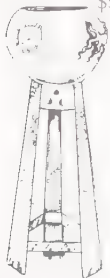
Unusual copper and wrought iron illuminated heater, 30in. high, circa 1900. \$550 £245



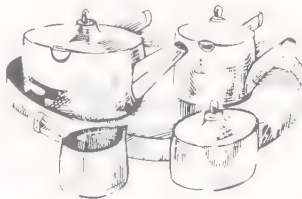
John Paul Cooper copper rosebowl, 7 1/2 in. diam., early 20th century. \$565 £250



Faure enamelled copper vase, 17cm. high, 1930's. \$675 £300



Copper and brass jardiniere on stand, Austrian, circa 1910, 53in. high. \$1,045 £465



Good Wiener Werkstatte tea service, circa 1910, 33.5cm. wide. \$4,500 £2,000

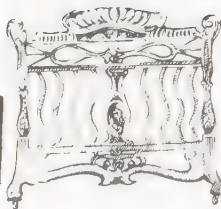


Brass and lacquer vase, by Jean Dunand, circa 1925. \$49,500 £22,000

FURNITURE
BEDS



A 'Mouseman' oak bed made by Robert Thompson of Kilburn. \$495 £220



Walnut half-tester bed, circa 1900. 83 x 58½in. \$765 £340

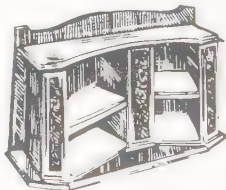


Mahogany and burr-walnut double bed, by Louis Majorelle, circa 1897, 68½in. wide. \$12,375 £5,500

BOOKCASES



Small Edwardian inlaid mahogany open fronted set of two shelves. \$70 £30



Stained beechwood book cabinet, 27in. wide, 1890's. \$170 £75



Art Nouveau mahogany secretaire bookcase, 48in. wide. \$2,025 £900

BUFFETS



Mercier Freres walnut and ivory bedside table, early 1920's, 63cm. high. \$405 £180



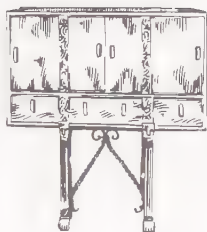
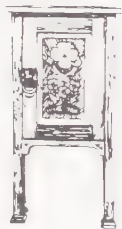
Mahogany buffet, circa 1895, 64in. high. \$1,125 £500



Fine Art Nouveau walnut buffet, English, circa 1900, 68½in. wide. \$3,150 £1,400

CABINETS

FURNITURE



Late 19th century inlaid oak pot cupboard. \$115 £55

Oak cabinet on stand, 42in. wide, circa 1910-20. \$325 £145

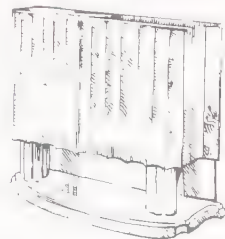
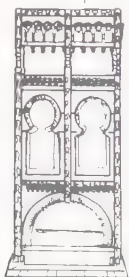
Oak cupboard, by Heal & Sons, circa 1905. \$405 £180



Liberty & Co. tall oak side cabinet, circa 1920, 26in wide. \$675 £300

Small Art Nouveau break-front cabinet, circa 1900, 58in. wide. \$730 £325

Mahogany cabinet, circa 1895, 68in. high. \$900 £400

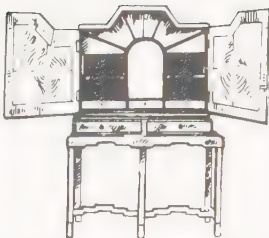


Wood and vellum cabinet, by C. Bugatti, circa 1900. \$1,080 £480

Stylish 1930's cocktail cabinet in pale walnut, 144cm. wide. \$1,485 £660

Painted oak corner cupboard, 84in. high, 1880's. \$1,620 £720

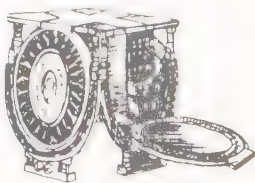
FURNITURE CABINETS



A silvered wood cabinet, by Waring & Gillow, circa 1930, after a design by Chermayeff. \$2,140 £950
 A walnut and burr-elm cabinet, by Russell, circa 1928. \$2,140 £950
 A fruitwood marquetry cabinet, by Louis Majorelle. \$2,700 £1,200



An Art Nouveau style marquetry inlaid walnut cabinet, 5ft.6in high. \$2,700 £1,200
 A fruitwood marquetry display cabinet, by Majorelle, circa 1910, 64cm wide. \$3,040 £1,350
 A fine mahogany cabinet, by Louis Majorelle, circa 1900, 30 1/2 in. wide. \$3,150 £1,400



Eugene Printz patinated bronze and lacquered wood cabinet, 1930's, 109cm. high. \$3,265 £1,450
 An oak cabinet, by Charles Rennie Mackintosh, circa 1905. \$4,725 £2,100
 An early 20th century Italian table cabinet, by Carlo Bugatti. \$16,200 £7,200

CHAIRS



Early 20th century oak rush-seated elbow chair. \$45 £20



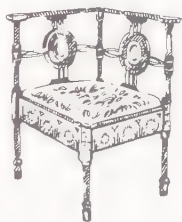
Liberty & Co. oak armchair, circa 1900
\$170 £75



Edwardian mahogany elbow chair with a pierced back splat and cabriole legs.
\$180 £80



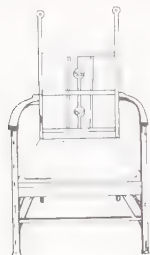
Mid '80's Art Nouveau oak chair.
\$190 £85



Decorative chair, attributed to Carlo Bugatti, circa 1910, 74cm. high.
\$190 £85



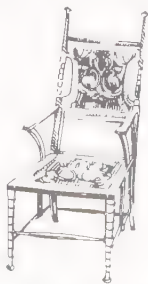
One of a pair of Art Deco giltwood chairs, 94cm. high.
\$190 £85



A mahogany Art Nouveau armchair, on square tapering legs. \$205 £90



One of a set of four oak armchairs, circa 1895.
\$225 £100



Mahogany armchair, 1890's, on turned legs. \$250 £110

FURNITURE

FURNITURE
CHAIRS



Stained beechwood armchair, circa 1890.
\$260 £115



One of a set of six oak dining chairs, circa 1900.
\$340 £150



Large Art Deco giltwood tub chair, early 1920's.
\$495 £220



Scottish mahogany armchair, circa 1900.
\$575 £255



One of a pair of Art Deco giltwood armchairs, early 1920's.
\$610 £270



One of a pair of oak chairs, by Charles Rennie Mackintosh, circa 1900. 112cm. high.
\$700 £310



One of a pair of Art Deco tub chairs, early 1920's.
\$765 £340



One of a set of six chairs, by Thompson of Kilburn.
\$810 £360

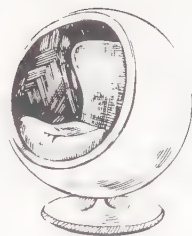


One of a pair of oak open armchairs, circa 1900, 31in. high. \$845 £375

CHAIRS



One of a set of four Edwardian Art Nouveau oak framed dining chairs with marquetry decoration. \$1,015 £440



Asko fibreglass 'globe' chair, 1966, 125cm. diam. \$990 £440



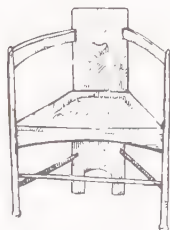
Bugatti throne armchair in ebonised wood, circa 1895, 140cm. high. \$1,080 £480



An ebonised chair, by Chas. Rennie Mackintosh. \$1,575 £700



One of a set of six oak dining chairs, circa 1900. \$1,575 £700



Small oak rush-seated armchair, by George Walton, circa 1900. \$2,025 £900



Carlo Bugatti chair of Moorish design. \$3,265 £1,450



Unusual Bugatti swing-back chair, circa 1900, 101cm. high, sides covered in vellum. \$3,825 £1,700



A small straight-back chair in ebonised wood, designed by Chas. Rennie Mackintosh, 40in. high \$4,165 £1,850

FURNITURE

FURNITURE CHAIRS



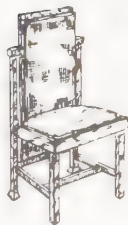
One of two walnut and mahogany chairs, sold with a matching kidney-shaped dressing table.

\$5,625 £2,500



One of a pair of Art Deco rosewood armchairs, French, circa 1930.

\$6,750 £3,000



Straight-backed chair designed by Frank Lloyd, circa 1910-16, 81.5cm. high.

\$6,750 £3,000



One of a pair of oak chairs, by Chas Rennie Mackintosh, 1897, 98cm. high.

\$7,200 £3,200



One of a pair of armchairs, by Jacques Ruhlmann, circa 1925.

\$8,440 £3,750



Oak high back chair, designed by Chas Rennie Mackintosh, 1897.

\$10,800 £4,800



Black and white wood prototype chair as designed by Gerrit Rietveld, circa 1917.

\$15,750 £7,000



An elegant chair, by Chas. Rennie Mackintosh, made for the owner of Willow Tea Rooms, Glasgow.

\$27,000 £12,000



Lacquered wood chair, by Eileen Gray.

\$30,375 £13,500

CHESTS



Art Deco burl maple chest of drawers, circa 1925, 51 $\frac{1}{2}$ in. wide. \$565 £250

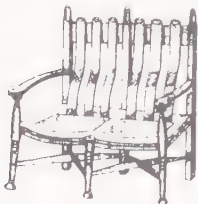


English oak chest of drawers, 39in. wide, circa 1930. \$730 £325



Art Deco burl maple chest of drawers, 63 $\frac{1}{2}$ in. high. \$1,260 £560

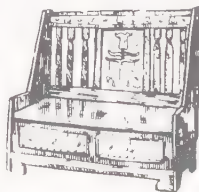
COUCHES



Ash settle, designed for Liberty & Co., circa 1900, 51in. wide. \$495 £220



Mahogany and marquetry settle, circa 1900, 51 $\frac{1}{2}$ in. wide. \$520 £230



Oak and beaten copper inlaid settle, 1900-1910. \$520 £230



Mahogany corner settee, circa 1900, 53 $\frac{1}{2}$ in. wide. \$565 £250

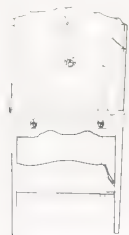


Part of a three piece suite of Art Deco silvered furniture. \$2,080 £925

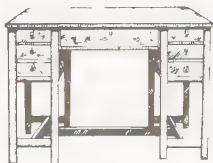


A superb gondola sofa, by Marcel Goad. \$33,750 £15,000

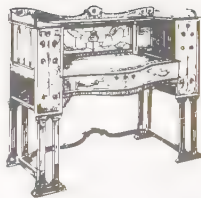
FURNITURE DESKS



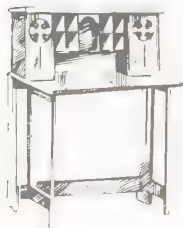
Edwardian mahogany fall-front secretaire, 23in. wide.
\$225 £100



Walnut desk inlaid with various woods, by Dane-way, circa 1910
\$1,125 £500



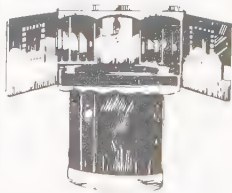
Art Nouveau mahogany writing table with drawer.
\$2,925 £1,300



Oak secretaire, by M. H. Baillie-Scott with pewter and marquetry inlay, 46in. high
\$4,950 £2,200



Walnut secretaire, by Peter Van Der Waals
\$5,625 £2,500



Writing cabinet of dark stained wood, by Charles Rennie Mackintosh, 37½ in. wide.
\$180,000 £80,000

DOORS

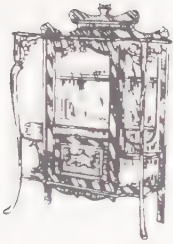


A pair of Rowley Gallery silvered wood doors, 1920's, 216cm. high.
\$565 £250



Pair of doors, by Jean Dunand, for a Normandie liner.
\$16,875 £7,500

DISPLAY CABINETS



Dutch mahogany display cabinet with chamfered glazed doors, 44in. wide, circa 1900. \$295 £130



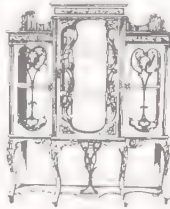
Edwardian bow-fronted inlaid mahogany china cabinet with two shelves enclosed by glazed leaded doors. \$385 £170



Late 19th century mahogany display cabinet, with a mirrored back. \$395 £175



Edwardian inlaid mahogany china cabinet, 28in. wide. \$395 £175



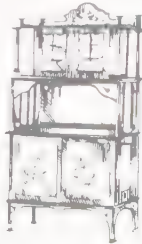
An Edwardian mahogany display cabinet, with mirror backed central and lower scroll backed glazed side cupboards. \$475 £210



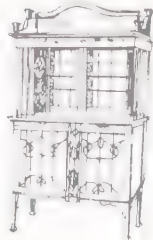
Mahogany display cabinet, 43½in. wide, circa 1900. \$620 £275



Mahogany vitrine, circa 1895, 68in. high. \$845 £375



Mahogany Art Nouveau side cabinet, inlaid throughout with foliage, 83in. high. \$900 £400



Art Nouveau mahogany and inlaid display cabinet, 4ft. 5in. wide. \$955 £425

DISPLAY CABINETS



Early 1920's Art Deco walnut and giltwood vitrine, 172cm. high. \$990 £440



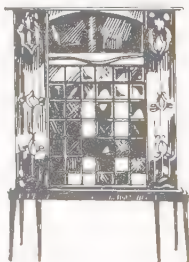
Edwardian Art Nouveau mahogany display cabinet, 54in. wide. \$1,040 £460



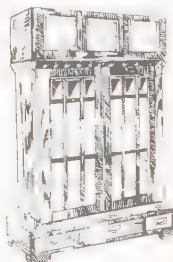
Bow-fronted satinwood display cabinet, inlaid with walnut, possibly German, circa 1910, 70 1/2in. high. \$1,380 £600



Superior Art Nouveau style inlaid mahogany china cabinet, 3ft.6in. wide. \$1,465 £650



Mahogany display cabinet, 46in. wide, circa 1900. \$2,025 £900



Austrian display cabinet, circa 1900-10, 125.5cm. wide. \$2,025 £900



Art Nouveau mahogany cabinet with marquetry inlay and pewter panel. \$3,645 £1,600



Marquetry display stand, by Emile Galle. \$5,625 £2,500



Early display cabinet, by Charles Rennie Mackintosh, circa 1895. \$6,190 £2,750

DRESSING TABLES



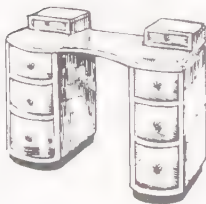
Liberty & Co. oak toilet table, 38½ in. wide, circa 1900. \$395 £175



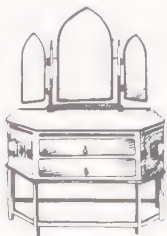
Mirror glass dressing table, 1930's, 97cm wide, with triple mirror. \$505 £225



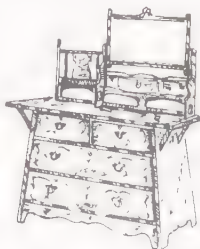
High Kitsch dressing table, 161cm. high, 1930's. \$640 £285



Part of a suite of Betty Joell satinwood bedroom furniture, circa 1930. \$675 £300



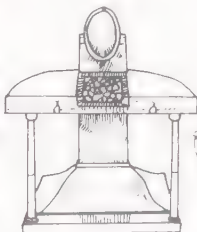
Part of an early 20th century bedroom suite, decorated in bleached oak and polychrome. \$1,780 £780



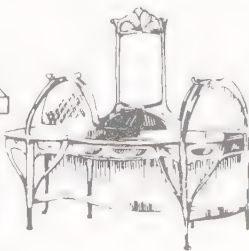
Part of a three-piece Arts and Crafts bedroom suite. \$1,855 £825



A walnut and mahogany kidney-shaped dressing table, sold with two matching chairs. \$5,625 £2,500

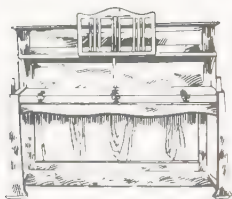


Dressing table, by Emile Jacques Ruhlmann, circa 1920, 43½ in wide \$20,250 £9,000

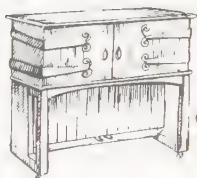


Part of a walnut and beech wood seven-piece suite \$49,635 £24,450

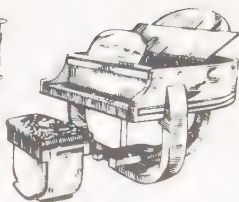
PIANOS



Oak Bechstein upright piano, by Walter Cave, circa 1900, 56in wide. \$955 £425



Upright oak Broadwood 'Manxman' piano, circa 1900, 56½in. wide. \$1,240 £550



Sycamore cased baby grand, by Strohmenger, with matching stool. \$3,375 £1,500

SCREENS



Early 20th century beech wood firescreen with needle work panel. \$55 £25



John Pearson bronze and wrought iron firescreen, circa 1906, 27½in. high. \$450 £200



Mahogany and leather five-fold screen, circa 1900, 85in. wide overall. \$790 £350



Giltwood and stained glass screen, circa 1900, 62in. wide. \$1,015 £450



American leaded glass firescreen, circa 1900, 45½in. high. \$3,825 £1,700

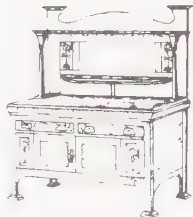


Rare and fine stained glass firescreen, by Tiffany, 57½in. wide. \$10,125 £4,500

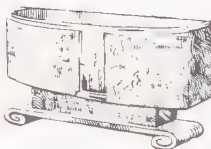
SIDEBOARDS



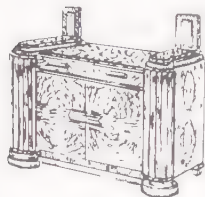
Art Deco sideboard in
amboyna wood, 5ft. 2in.
long. \$170 £75



Oak side cabinet, circa
1905, 152cm. wide, with
arched superstructure. \$360 £160



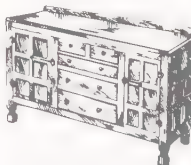
Large sideboard in pale wal-
nut, 1930's, 175cm. wide.
\$450 £200



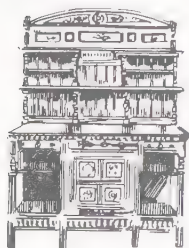
Art Deco mahogany side-
board, circa 1925, 170cm.
wide, with twin light fitt-
ings at back. \$450 £200



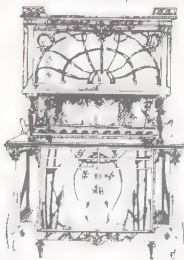
A yew-wood dresser, prob-
ably American, 1900-25,
5ft 7in. wide \$565 £250



Fumed oak sideboard, by
Thompson of Kilburn.
\$1,125 £500



Fine small oak and boxwood
sideboard, by Gillows & Co.
\$3,375 £1,500

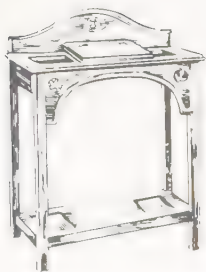


An Art Nouveau mahog-
any sideboard cupboard,
French, circa 1900, 59in
wide. \$7,650 £3,400

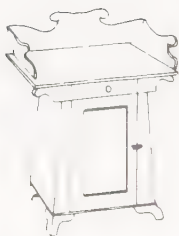


Ebonised sideboard with
silver plated mounts, about
1875. \$18,000 £8,000

STANDS



Edwardian oak hall stand
\$55 £25



Late 19th century pine
washstand. \$135 £60



Art Nouveau style oak hall
stand. \$170 £75



Art Deco wrought iron hall
stand, circa 1920.
\$360 £160



Early 1920's wrought iron
and marble gueridon,
86.5cm. high.
\$395 £175



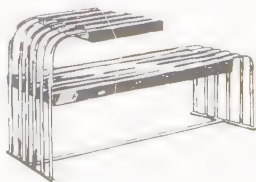
Early 1920's wrought iron
and marble gueridon,
109.5cm. high. \$405 £180



Syrie Maugham painted
wood table or jardiniere,
circa 1936, 93.75cm. wide
\$730 £325



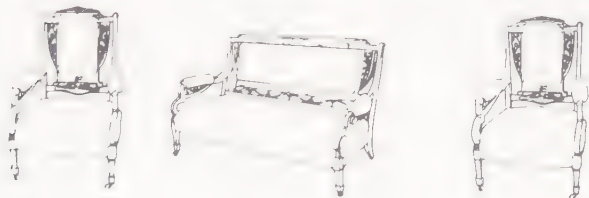
Two-tiered rosewood jar-
diniere stand, circa 1895,
16in. square. \$1,880 £835



Art Deco chrome and mirror
conrack with umbrella
stand, circa 1925
\$2,590 £1,150



Suite of tubular chromed metal cantilever seat furniture, 1930's, 80cm high.
 \$450 £200



Edwardian inlaid mahogany three piece suite on short tapered legs with spade feet
 \$565 £250



Art Deco three-piece suite, 1930's, in cut velvet
 \$655 £300



An Art Deco drawingroom suite, late 1930's, upholstered in velvet.
 \$900 £400

FURNITURE
SUITES



A 1930's tubular steel three piece suite.

\$1,015 £450



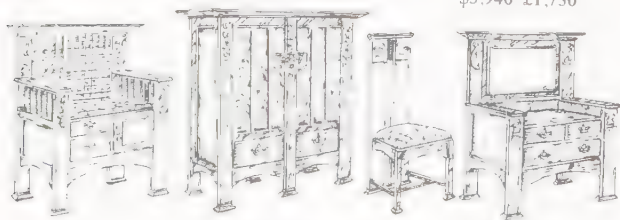
A stained beechwood suite, circa 1900, of two armchairs and a settee.

\$1,015 £450



Suite of Art Nouveau walnut seat furniture, circa 1900, settee 48in wide

\$3,940 £1,750

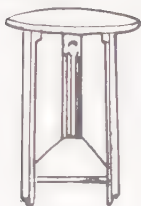


Liberty & Co. inland oak bedroom suite, circa 1900

\$9,900 £4,400

TABLES

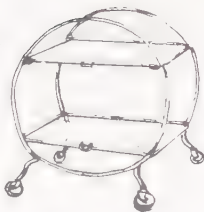
FURNITURE



Edwardian oak occasional table.
\$45 £20



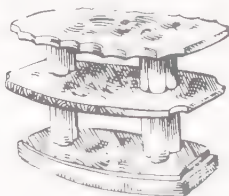
Edwardian oval two-tier oak table with two side tiers.
\$80 £35



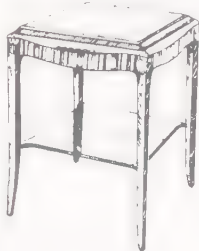
1930's tubular chrome tea trolley.
\$100 £45



Brass mirror topped table, circa 1900, 73cm. high.
\$225 £100



Three-tier coffee table in pale walnut, 1930's, 91.5cm. wide.
\$250 £110



Early 1920's marble-topped Art Deco occasional table, 54.5cm. square.
\$250 £110



Early 1920's oval mahogany table, 85cm. wide.
\$250 £110

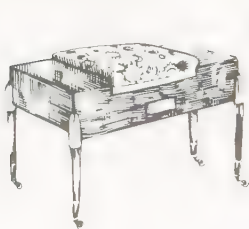


Liberty & Co. oak and beaten copper occasional table, circa 1920, 24in. wide.
\$280 £125



Syrie Maugham painted wood occasional table, circa 1936, 66.5cm. high.
\$325 £145

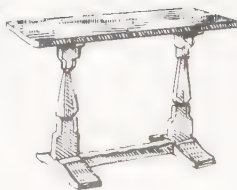
FURNITURE TABLES



Renouvin Art Deco music stool, 78.25cm. wide.
\$395 £175



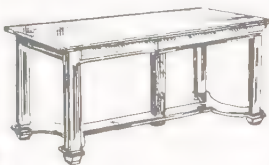
Art furniture design two-tier table in ebony and specimen wood, circa 1880. \$395 £175



'Mouseman' oak buffet table, 60in. long, 1936-40. \$415 £185



Wood and perspex consol table, 1930's, 91.25cm. high. \$450 £200



Oak dining table, by J. J. Joass, 66in. long, circa 1940. \$505 £225



Early 20th century kingwood etagere with gilt metal supports, 35in. wide. \$530 £235



A Galle oak and marquetry etagere, the shaped rectangular top inlaid in various printwoods. \$650 £290



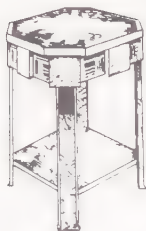
Scandinavian inlaid low table, 1920's, 91.5cm. diam. \$675 £300



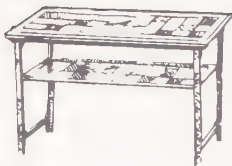
French mahogany centre table, circa 1900, 36in. wide. \$730 £325

TABLES

FURNITURE



An English brass mounted 'Odeonesque' occasional table. \$790 £350



Art Deco drawingroom table, by Gebroeders Leytens, in palisander wood. \$900 £415



A Galle beechwood and marquetry occasional table, the oval tray top inlaid with a flowered spray, 71cm. wide. \$900 £415



Art Nouveau tripod shaped occasional table, inlaid with marquetry. \$1,100 £500



Oak domino table, by Charles Rennie Mackintosh, 79cm. high, circa 1911. \$1,295 £575



Rosewood and mahogany bedside table, by Louis Majorelle, 37 1/2 in. high. \$1,520 £675



Marquetry two-tier table, by Emile Galle, circa 1890, 26in. square. \$1,855 £825



English walnut dining table, 60 1/2 in diam, circa 1935. \$1,855 £825



Rosewood quatre-lobed etagere, by Emile Galle, circa 1895, 24in wide. \$1,855 £825

FURNITURE TABLES



Galle fruitwood marquetry
occasional table, circa
1900, 78cm. wide.
\$2,250 £1,000



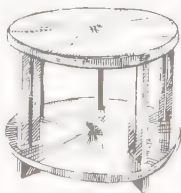
A fruitwood marquetry
two-tiered table, by
Louis Majorelle, 75cm
high \$2,925 £1,300



Set of four marquetry tables
with glass tops, circa 1900,
by Galle \$2,925 £1,300



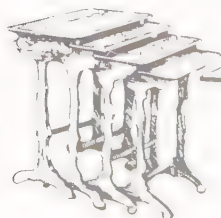
Attractive shagreen covered
side table, 1920's, 40cm
high. \$2,925 £1,300



Rosewood coffee table,
by Jacques Ruhlmann,
circa 1925, 26" an diam
\$3,825 £1,700



Emile Jacques Ruhlmann
table, 74.5cm wide, circa
1925. \$4,165 £1,850



Nest of four tables, by
Galle with inlaid tops.
\$4,500 £2,000



Fine lacquered wood
and chrome consol table,
by Donald Desky, circa
1927, 72in. wide.
\$5,625 £2,500



Art Deco galuchat and
ivory lady's writing table,
circa 1930.
\$27,000 £12,000

WARDROBES

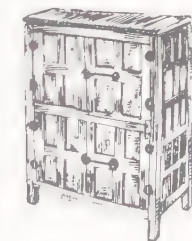
FURNITURE



An Edwardian mahogany wardrobe, 7ft. x 5ft. wide \$450 £200

Part of a fine four-piece bedroom suite \$505 £225

An Art Nouveau marquetry oak wardrobe, 137cm. wide. \$630 £280



Early 1920's walnut and ivory wardrobe, designed by Leon Jallot 183cm high. \$745 £330

Mouseman oak cupboard, 36in wide circa 1936-40. \$1,240 £550

A gentleman's wardrobe in oak, by Peter Waals, circa 1935. \$2,025 £900



Stained oak wardrobe, by Charles Rennie Mackintosh, circa 1890 \$4,050 £1,800

Solid walnut breakfront wardrobe, by Peter Waals \$5,195 £2,310

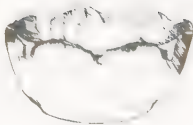
Rosewood armoire, by Louis Majorelle, 103in high. \$11,250 £5,000

GLASS
BOWLS

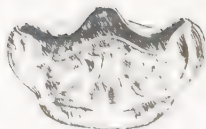


19th century Lalique glass bowl of clear and opaque white glass, 10in. diam.

\$165 £75



One of a set of three Tiffany iridescent glass finger bowls, circa 1900, 12cm. diam. \$450 £200



'L'Homme Lefevre de Caranza' lustre glass bowl, circa 1900, 7.5cm wide \$450 £200

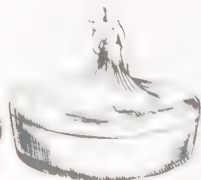


Tiffany blue iridescent bowl with swirled blown-out body. \$450 £200



A small Lalique bowl and cover of compressed form, 7cm. diam.

\$500 £230



A Lalique circular bowl and cover of matt glass with slightly flared sides, 8cm. diam. \$520 £230



A glass bowl, by Gabriel Argy Rousseau.

\$565 £250



Lalique glass powder bowl, 6 1/2 in. diam. \$565 £250



Galle cameo glass bowl and cover, circa 1900, 11cm diam. \$630 £280



Iridescent favrite glass
flower bowl, by Tiffany,
13in. diam. \$640 £285



Galle cameo glass bowl,
circa 1900, 20.25cm.
diam. \$675 £300



Heavy Walter pate de verre
stemmed bowl, 15cm. high,
1920's. \$850 £380



Daum cameo glass bowl with
quatrefoil rim, circa 1900,
15.5cm. wide. \$990 £440



Galle enamelled glass
bowl, circa 1900,
16.25cm. diam.
\$985 £450



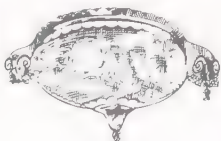
An Orrefors deep bowl,
by Edvin Ohrstrom, 18cm.
diam. \$1,080 £480



Galle cameo glass bowl,
circa 1900, 11.5cm. wide.
\$1,125 £500



Fine quality bowl, by
Francois Emile Decorche-
mont. \$1,465 £650



Rare mounted cameo glass
wall flower bowl 13in.
diam. \$2,140 £950

GLASS
CANDLESTICKS



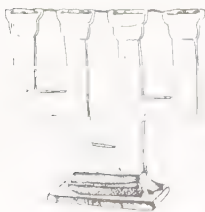
Edwardian moulded glass candlestick of square section. \$9 £4



Art Deco red and clear glass candlestick. \$36 £16



Large cut glass column with faceted stem, circa 1900, 54.5cm. high. \$520 £230



One of a pair of Lalique four-light candelabra, 9 1/2 in. high \$1,630 £725



Pair of Tiffany bronze and glass candlesticks, 14 1/2 in. high. \$4,500 £2,000



Fine bronze and iridescent Favrite glass six-branched candelabrum, by Tiffany, 15 in. high \$4,500 £2,000

CUPS



One of a set of four Tiffany iridescent glass mugs, circa 1900, 6.5cm. high. \$475 £210



Tiffany gold iridescent loving cup with three handles, 5 in. high. \$820 £365



Galle cameo glass stemmed honeycomb cup, 11.75cm. high, circa 1900. \$1,465 £650

DISHES

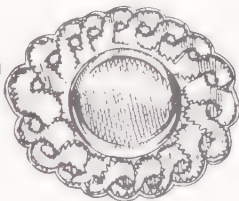
GLASS



Lalique opalescent glass dish and cover, 1920's, 17cm diam. \$400 £180

A Galle cameo glass dish, 29cm. wide, circa 1904. \$405 £240

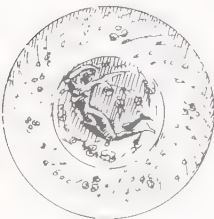
A high quality pate de cristall dish, by Argy Rousseau. \$620 £275



Daum etched and enameled glass dish with two loop handles, 18.5cm. wide, circa 1900. \$675 £300

Glass centrepiece by Rene Lalique, circa 1925, 32cm long. \$675 £300

Galle glass dish carved as a shell, 1890's, 34cm. long. \$745 £330



One of a set of four Lalique side plates, circa 1925. \$745 £330

Daum cameo glass dish, 14.5cm. wide, circa 1900 \$900 £400

Webb cameo shallow circular dish, 8cm. diam. \$1,745 £775

**GLASS
FIGURES**



A sea green and yellow pate de verre figure of Loie Fuller, signed A. Walter Nancy, 20.5cm. high. \$505 £225



Large Laliq frosted glass figure of a pigeon, 14.5cm. high, 1930's. \$1,125 £500



Pate de verre chameleon paperweight, by H. Berge, in deep green glass, 1910, 8.6cm. high. \$2,140 £950



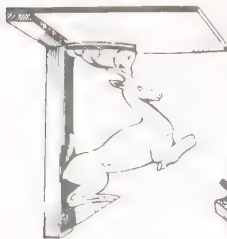
20th century Laliq glass figure of a kneeling woman, 21cm. high. \$2,250 £1,000



Laliq glass figure of a cockerel, 1930's, 19.5cm. high. \$2,970 £1,320



Laliq opalescent glass figure, 'Suzanne au Bain', 1920's, 23cm. high. \$3,040 £1,350



Laliq glass bracket shelf, 1930's, 26.25cm. wide. \$3,040 £1,350



Pair of Walter pate de verre bookends, 1920's, 17cm. high. \$3,715 £1,650



Pair of figures, by Laliq, in frosted glass, 56cm. high. \$6,750 £3,000



A Laliq amber glass inkwell and cover, 1920's, 15.75cm diam

\$790 £350

Art Nouveau glass inkstand depicting a lizard emerging from a pond.

\$1,690 £750

A rare Tiffany inkwell supported by four toads.

\$3,375 £1,500

JUGS



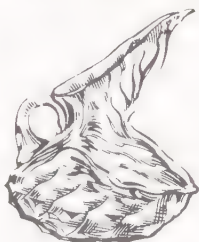
A Laliq clear glass jug, the handle moulded with berries and foliage, 21cm high.

\$100 £45



WMF pewter mounted green glass claret jug, circa 1900, 41.5cm high.

\$525 £240



Galle carved glass pitcher in smoked glass, 1890's, 15.5cm high.

\$1,240 £550



Silver mounted mauve glass claret jug, by Elkington & Co., Birmingham, 1897, 14in. high.

\$1,240 £550



A French cameo glass claret jug, by Daum, 12½in. high.

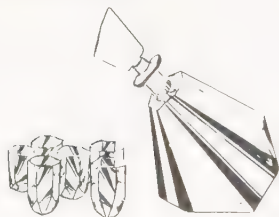
\$1,855 £825



An exceptionally fine Webb cameo glass claret jug.

\$2,250 £1,000

**GLASS
LIQUEUR SETS**



A modernist cocktail service, consisting of a decanter and six glasses, circa 1930.
\$225 £100



Modernist glass liqueur set with tray, 1930's.
\$305 £135



Attractive WMF silvered metal liqueur set, circa 1900, 37.5cm high.
\$370 £165



Etched liqueur service in glass, 1930's.
\$495 £220



Good Moser glass set, circa 1900, in clear glass.
\$1,240 £550



Rare glass tableware service in the Duncan pattern, by Rene Lalique, circa 1935
\$6,190 £2,750



Art Deco mallet-shaped
decanter \$55 £25



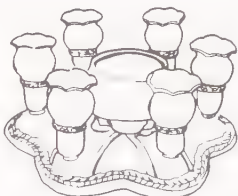
A Daum match-holder of
rectangular form, the pale
blue frosted glass body
enameled with an Alpine
scene, 4cm. high.
\$225 £100



Art Deco dressing table set,
circa 1930. \$340 £150



Lalique glass decanter,
12in. high. \$605 £270



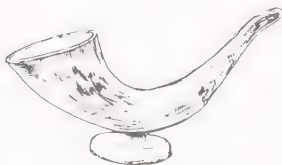
Coffee and cream glass
centrepiece, by Webb,
10½in. diam. \$790 £350



Unusual Galle enamelled
glass pot pourri jar, 30cm.
high, circa 1890.
\$1,575 £700



Good Loetz iridescent
glass 'rosewater sprinkler',
24cm. high, circa 1900.
\$2,475 £1,100



Rare internally decorated
textured Galle glass horn,
circa 1900, 42.5cm. long.
\$2,925 £1,300



Daum glass and Brant
wrought iron aquarium, circa
1925, 148cm. high.
\$3,065 £1,400

GLASS
PERFUME BOTTLES



Art Deco coloured glass
scent bottle. \$30 £14



Glass perfume bottle,
circa 1920. \$35 £16



Guerlain 'Mitsouko' glass
bottle and stopper. \$55 £25



Art Nouveau silver and blue
enamel perfume bottle,
2 1/4 in. wide. \$80 £35



Lalique frosted glass scent
bottle, 1920's, 12.5cm.
high. \$125 £55



Amber glass bottle with
shaped stopper and silver
neck. \$135 £60



Delvaux enamelled bottle
and stopper, 1920's, 11.25cm.
high. \$170 £75



Decorated clear glass per-
fume bottle and stopper,
13.75cm. high. \$200 £90



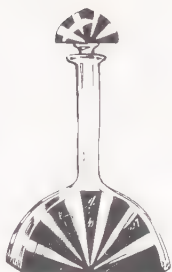
Lalique glass cologne bottle
and stopper, 1930's, 17.5cm.
high. \$225 £100

PERFUME BOTTLES

GLASS



Moulded glass perfume bottle and stopper, 12cm. high, 1920's. \$250 £110



Modernist glass bottle and stopper, circa 1930, 26cm. high. \$325 £145



Lique glass scent bottle and stopper of swollen cylindrical form, 1930's, 8.7cm. high. \$405 £180



Cameo glass scent bottle with hinged silver cap, Birmingham, 1886, 12cm. high. \$585 £260



Daum scent bottle and stopper, 5in. high, signed. \$700 £310



Unusual gilt metal and plique-a-jour enamel scent phial, 5.8cm. high, circa 1900. \$945 £420



Galle glass perfume burner, 6 1/2 in. high. \$1,180 £525



Cameo glass scent bottle with silver cap, by Horton & Allday, Chester, 1884, 23.8cm. long. \$1,465 £650



A scent bottle, by Tiffany, \$1,575 £700

GLASS
PLAQUES



An illuminated Lalique glass plaque, carved with a naked archer, 4in. diam.
\$505 £225



A fine Lalique plaque depicting peacocks, sold with a similar piece.
\$6,750 £3,000



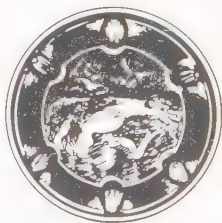
Art glass plaque by G. Woodall, depicting a sea nymph, circa 1885.
\$10,690 £4,750



Fine bronze mounted pate de verre plaque of Isadora Duncan, 17 1/2 in. high.
\$11,250 £5,000



Rene Lalique's 'L'oiseau de Feu' glass lamp, on a bronze base, 17 1/2 in. high.
\$11,700 £5,200



Cameo glass plaque, by G. Woodall, depicting a sea nymph, circa 1885.
\$33,750 £15,000

POTS



Lithyain pouncepot with pewter mount, 2 1/2 in. high.
\$450 £200



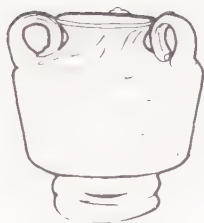
Silver mounted cameo and applied glass pot, by Galle. \$675 £300



Daum etched and applied cameo glass pot and cover, 12.5cm high, circa 1910.
\$790 £350



Slim Art Nouveau vase in pale blue glass. \$25 £10



Three-handed Art Nouveau glass vase in green. \$35 £15



Late 19th century iridescent vase with applied decoration, 5 1/2 in. high. \$35 £16



German clear glass vase in a silver plated pewter case, by Crivit. \$45 £20



Dark green Art Nouveau rippled glass vase in a brass case with lily pad design. \$70 £30



Art Nouveau vase decorated with snails in fiery orange and silver blue. \$80 £35



Moser iridescent glass vase in graded mulberry tinged with pink. \$90 £40



One of a pair of Art Nouveau silver overlay blue vases. \$135 £60



Legras etched and internally decorated glass vase, 1920's, 31.5cm high. \$170 £75

GLASS VASES



Legras etched and internally decorated glass vase, 39cm. high, 1920's.
\$200 £90



Etched and gilded vase in Orivit gilt metal mount, circa 1900, 25.75cm. high.
\$315 £140



A Legras cameo glass vase of quatrefoil shape, 13cm. high.
\$340 £150



One of a pair of Georg Adam Scheid plique à jour vases, 13.75cm. high, circa 1900. \$395 £175



Orrefors engraved glass vase, 18.75cm. high, 1940's, sold with another
\$405 £180



Stevens & Williams cameo vase of pale amber ground, with Stourbridge Art Glass marks, circa 1890, 11.5cm. high.
\$450 £200



De Vez cameo glass landscape vase, circa 1900-10, 22.25cm high \$475 £210



A gilt and enamelled Marcel Goupy vase, 24.5cm high, 1920's
\$485 £215



Cristallerie de Pantin cameo glass vase, circa 1900, 16.5cm high \$495 £220



Le verre Français cameo glass vase, 1920's, 47.5cm high. \$495 £220



Durand blue iridescent glass vase, 18.8cm. high, circa 1910. \$520 £230



Le verre Français-Charder cameo glass vase, 1920's, 35cm. high. \$540 £240



An Orrefors glass vase, by Vicke Lindstrand, circa 1930, 3½in. high. \$620 £275



Degne overlaid and etched glass vase, 1920's, 40.5cm. high. \$675 £300



Eugene Rousseau glass vase, circa 1885, in shaded bubble brown glass, 18cm. high. \$945 £420



Argy Rousseau pate de cristal vase, 14.75cm. high, 1920's. \$1,240 £550



Art Deco vase in pate de verre, signed Muller Freres. \$1,240 £550



Burgun and Schwerer wheel carved vase in bluebell purple and gilt. \$1,240 £550

GLASS VASES



A pate de cristal vase, by Francois Emile Decorchemont, circa 1927.

\$1,350 £600



A good, heavy Art Deco glass vase, by Andre Thuret, 1930.

\$1,350 £600



Argy Rousseau pate de cristal vase.

\$1,295 £600



Muller Freres carved cameo glass vase, 1890's, 40cm. high

\$1,575 £700



An Argy Rousseau pate de verre oviform vase, 14.5cm. high.

\$5,175 £2,300



Pate de cristal Argy Rousseau vase, 10in. high.

\$8,325 £3,700



Pate de cristal vase, by Francois Decorchemont, in deep blue glass, 25.5cm high, circa 1910.

\$9,000 £4,000



Rare and early wood and metal mounted Bakalowitz glass vase, 1900, 46.5cm. high.

\$21,375 £9,500



Cameo glass vase, by G. Woodall, 1885.

\$42,750 £19,000

DAUM

GLASS VASES



Daum enamelled glass vase,
1920's, 18.5cm high
\$250 £110



Daum etched and enamelled
glass vase, circa 1900,
8cm high. \$395 £175



Daum etched glass vase,
circa 1900, 12.25cm high.
\$450 £200



Daum carved cameo glass
vase, circa 1900, 11.5cm
high. \$620 £275



Daum etched and gilt
'vase partant', circa 1900,
26cm high. \$765 £350



Carved cameo glass vase, by
Daum, 37cm high, circa
1900. \$865 £385



Daum cameo glass vase,
circa 1900, 16.5cm high.
\$1,015 £450



Daum cameo glass vase
of teardrop form, 30.25cm
high, circa 1900.
\$1,350 £600



Daum etched, carved and
enamelled glass vase, circa
1900, 13.5cm high.
\$1,350 £600

GLASS
GALLE



Miniature Galle cameo glass vase, 5.25cm high, circa 1900, with ribbed stem. \$250 £110



Small Galle cameo glass vase, circa 1900, 8.5cm high. \$395 £175



Galle cameo glass vase with irregular rim, circa 1900, 13.25cm high. \$700 £310



Galle cameo glass vase, overlaid in brown, 43.5cm high. \$1,180 £525



Mounted Galle cameo glass vase, circa 1890's, 7.75cm high. \$2,250 £1,000



Good Galle cameo glass vase, 19.5cm high, circa 1900. \$2,925 £1,300



A fine and rare marquetry vase, by Emile Galle, made in 1900 \$6,750 £3,000



Large Galle 'blow-out' glass elephant vase, circa 1900, 38cm high. \$24,750 £11,000



Internally decorated, carved and apphed glass vase, by Emile Galle, 1900, 23.2cm high. \$56,250 £25,000



Bulbous Lalique frosted glass vase, 25.5cm high, 1920's. \$180 £80



A Lalique flared vase of matt glass and graduated form, 15.5cm high. \$290 £130



Lalique opalescent glass vase, 1930's, 22cm high. \$430 £190



A Lalique globular vase of matt opalescence, 16.5cm high. \$495 £220



Spherical Lalique frosted glass vase, 25.5cm high, 1920's. \$720 £320



Bulbous Lalique glass vase, 24.75cm high, 1920's. \$1,080 £480



Good Lalique 'grasshopper' vase, 27cm high, 1920's. \$2,475 £1,100



A Lalique vase, with a border of Bacchantes. \$6,750 £3,000



Lalique amber glass serpent vase, 1930's, 24.5cm high. \$10,125 £4,500

GLASS
LOETZ



Loetz iridescent glass vase,
14.25cm. high, circa 1900.
\$325 £145



Loetz iridescent glass
vase, circa 1900, 17.25cm.
high. \$460 £205



Loetz iridescent glass vase,
circa 1900, 17cm. high.
\$565 £250



Loetz iridescent glass vase,
circa 1900, 21.5cm. high
\$630 £280



Good Loetz iridescent
glass vase, 17.5cm. high,
circa 1900. \$790 £350



A Loetz glass bottle vase
with a blue base decorated
with flame designs
\$1,125 £500



Loetz iridescent glass vase,
circa 1900, 20cm. high.
\$1,485 £660



Iridescent glass vase, by
Loetz, circa 1900,
30.75cm. high.
\$1,690 £750

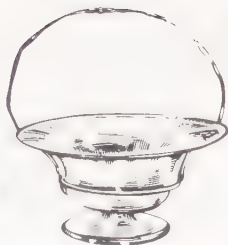


One of a pair of Loetz iri-
descent vases.
\$2,140 £950

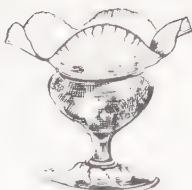


Tiffany iridescent glass vase,
9.5cm. high, 1912.

\$385 £170



Tiffany bronze and gold
iridescent bride's basket,
7½in. high. \$475 £215



A Tiffany Favrite turquoise
iridescent vase with ovi-
form body, 13.5cm. high.

\$970 £420



Tiffany flower form vase
with green and white
flower, 11½in. high.

\$1,530 £680



Tiffany Favrite iridescent
millefiori oviform vase, 6in.
high.

\$1,620 £720



A Tiffany Cypriot vase.

\$2,250 £1,000



Tiffany flower vase of
milky tone, 44cm. high.

\$4,050 £1,800



Gold and yellow iridescent
vase, by Louis C. Tiffany,
38cm. high, circa 1900.

\$6,075 £2,700



A rare Jack-in-the-Pulpit
Tiffany peacock iridescent
glass vase, 1900.

\$11,250 £5,000

GLASS
WEBB



A Webb glass cameo vase,
9in. high \$620 £275



Cameo glass vase, by Thos.
Webb & Sons, 10.8cm.
high \$925 £410



Webb 'ivory cameo' glass
vase with tall neck,
31.7cm high, 1880's.
\$945 £420



A fine white and blue Webb
cameo vase \$1,125 £500



Late 19th century Webb
cameo glass vase, 9.5cm
high \$1,295 £575



Thomas Webb cameo ovi-
form vase, by George
Woodall, circa 1880, 21cm.
high. \$1,350 £600



Webb cameo glass vase
in pink and white overlay.
\$1,970 £875



A superb vase, by Thomas
Webb. \$2,815 £1,250



Webb three colour cameo
glass vase. \$12,940 £5,750

HAIR COMBS



Art Nouveau tortoiseshell hair comb \$40 £18



Two-pronged comb made of stained horn. \$90 £40



Art Nouveau comb of pale coloured horn. \$100 £45



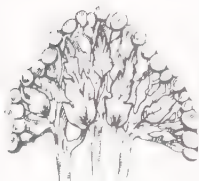
English tortoiseshell comb with flowing gold design set with turquoises \$395 £175



One of a pair of French hair combs of horn adorned with silver lilies \$675 £300



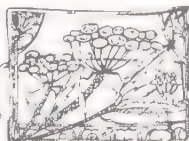
Henri Vever carved horn, gold, opal and turquoise brooch, circa 1900, 8.5cm high. \$1,050 £480



Good carved horn enamel and moonstone hair comb, circa 1900, 13.1cm wide \$1,295 £575



Carved horn, gold, enamel and mother-of-pearl hair ornament, by Lali que, circa 1900, 17.5cm wide. \$3,600 £1,600



Art Nouveau hair ornament set with rose diamonds and pearls. \$10,125 £4,500

IVORY



Small Preiss carved ivory figure, circa 1920, 15cm high. \$450 £200



Preiss ivory and onyx group depicting woodland friends, 5 1/2 in. high, signed, circa 1930. \$505 £225



Preiss carved ivory figure of a little girl, 15.25cm high, 1920's. \$730 £325



Preiss carved ivory figure of a little boy, 14.75cm high, 1930's. \$730 £325



Model of a sea nymph rising from the waves. \$745 £330



Preiss carved ivory figure of a naked girl, 1930's, 8.75cm high. \$765 £350



A carved ivory figure, by F. Preiss, of a seated nude girl, 9cm high \$915 £420



A pair of ivory ladies \$3,040 £1,350



Carved ivory female head, by Julien Dillens, 55cm high, circa 1900. \$3,600 £1,600

JEWELLERY



Liberty & Co silver and enamel brooch, circa 1905. 3.25cm wide. \$100 £45



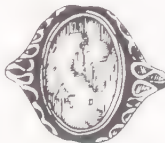
Heart-shaped silver and enamel brooch, circa 1900. 3.25cm wide. \$170 £75



Georg Jensen brooch in silver coloured metal. 6cm. wide. 1920's. \$175 £80



Art Deco bar brooch, 1920's, 7.5cm. long, in silver coloured metal set with a band of brilliants. \$185 £85



Liberty & Co silver and turquoise ring. \$195 £90



Unusual enamelled pendant on silver coloured metal, 5cm. long, circa 1905. \$305 £135



Gold and opal brooch, 3.25cm., circa 1900. \$315 £140



Delon gentleman's ring, 1930's, in silver coloured metal. \$350 £160



Charles Horner silver and enamel brooch, 2.75cm wide. Chester, 1903. \$395 £175



Lalique deep amber glass pendant, 5cm. high, 1920's. \$405 £180



Art Nouveau gold and enamel fairy pendant. \$450 £200



Large Art Nouveau cameo brooch, gold surround set with pearls, circa 1900. 9.75cm. high. \$525 £240

JEWELLERY



Liberty & Co. plique a jour enamel pendant, circa 1905, 4.5cm. long.
\$565 £250



Dunand eggshell lacquer pendant panel, 13.8cm. long.
\$730 £325



Fahrner silver and opal pendant, circa 1900, 4.5cm. high.
\$745 £340



Attractive Wm. Hutton & Sons Ltd., silver and enamel belt, London, 1904.
\$845 £375



Boutet de Monvel gold, opal and enamel ring, 3cm. long, circa 1900.
\$1,140 £520



Sybil Dunlop necklace of quartz and semi-precious stones, circa 1900, 7cm. high.
\$1,315 £600



Art Nouveau style brooch set with a diamond
\$1,220 £600



An Art Deco diamond and sapphire brooch with a central triangular cut diamond.
\$1,855 \$825



Italian Art Nouveau plique a jour enamelled brooch, circa 1900, 8.8cm. wide.
\$2,410 £1,100



Gold, carved chrysoprase, baroque pearl and diamond Art Nouveau brooch, 5cm., circa 1900
\$3,715 £1,650



Art Deco sapphire, emerald and diamond brooch, mounted in platinum
\$21,375 £9,500



Pendant, by Alphonse Mucha and Georges Fouquet
\$67,500 £30,000

LAMPS



Brass desk lamp with swivel shade, 1930's \$70 £30



Unusual Barbedienne table lamp, 1930's, 38.5cm. high. of copper sheet in trumpet shape. \$195 £90



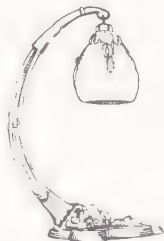
Lamp as a lady dressed in black and silver with ivory face and hands, 1920's, 10in. high. \$270 £120



Art Deco design electric desk lamp, 21in. high, circa 1925. \$305 £135



Pairpoint fairy lamp with blown out pansy shade on wooden base \$325 £145



Art Deco bronze table lamp, French, circa 1925, 38cm. high. \$395 £175



Art Deco green patinated bronze table lamp. \$455 £205



Art Deco bronze lamp, 1930's, 52.75cm. high. \$675 £300



Lalique lamp in frosted glass 1920's, 10 1/2 in. high. \$1,575 £700

LAMPS



Gilt bronze and Favrile glass three-light lily table lamp, by Tiffany, 13in. high. \$1,755 £780



Bronze lamp in the style of Gurschner. \$2,250 £1,000



Tiffany 'fabrique' table lamp with ten panel amber linen fold glass shade, 20 1/2 in. high. \$2,300 £1,045



Lalique glass lamp, 1920's, 31.25cm. high. \$2,475 £1,100



Bronze and ivory two-light table lamp, by Preiss, 26in. high. \$2,700 £1,200



Daum cameo glass lamp, circa 1900, 44.5cm. high. \$3,375 £1,500



German or Austrian Art Nouveau lamp, 69cm high \$3,375 £1,500



Art Nouveau leaded glass and bronze table lamp, circa 1910, 64.5cm high \$5,065 £2,250

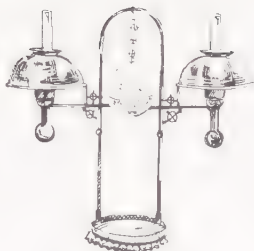


Austrian Art Nouveau bronze and ivory table lamp, signed Teraczuk, shade by Galle. \$5,445 £2,695



Le verre Francais cameo glass lamp with shouldered domed shaped shade, 1920's, 40.5cm. high.

\$6,300 £2,800



Early Favrite glass and silvered bronze kerosene student lamp, by Tiffany, 24in. high.

\$7,315 £3,250



Poppy leaded glass and gilt bronze table lamp, by Tiffany, 25 1/2 in. high.

\$14,625 £6,500



Gilt bronze figural lamp, by Raoul Larche, 46cm. high.

\$19,440 £9,000



Poppy leaded glass and bronze table lamp, by Tiffany, 27 1/2 in. high.

\$24,750 £11,000



Rare blown and carved glass bronze mounted table lamp, by Emile Galle, circa 1900, 42cm. high.

\$27,000 £12,000



Galle cameo glass lamp, circa 1900, 52.5cm. high, in the form of water-lily.

\$31,500 £14,000



Tiffany studio wisteria lamp. \$47,250 £21,000



Tiffany spider web lamp with bronze baluster base. \$185,625 £82,500

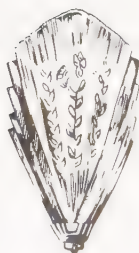
CEILING LIGHTS



20th century painted glass hanging shade. \$27 £12



Art Nouveau brass chandelier, circa 1900
\$280 £125



One of a pair of Art Deco moulded glass and metal wall lights, circa 1925, 42cm. high. \$450 £200



Art Deco wrought iron and Schneider glass chandelier, 1930's, 67cm. wide.
\$505 £225



Highly coloured Belgian chandelier, by Muller, 61cm. high. \$730 £325



Large German Art Nouveau gilt metal chandelier, circa 1900, 128cm. high.
\$790 £350



Favrite glass and bronze chandelier, by Tiffany Studios, 20in. high.
\$1,260 £560



Glass chandelier, by Rene Lalique, 12in. diam.
\$1,520 £675



Fine glass ceiling fixture, by Rene Lalique, circa 1925, 10³/₄in. diam.
\$2,475 £1,100

CEILING LIGHTS



Iridescent Favrite glass chandelier, by Tiffany, shade 14in. high
\$3,035 £1,350



Double overlay glass chandelier, by Daum Freres, 15in. diam
\$3,150 £1,400



Unusual leaded glass chandelier with pulley pull-down mechanism, 52in. high.
\$3,575 £1,590



Gilt bronze and Favrite glass ceiling fixture, by Tiffany, 17in. high.
\$3,715 £1,650



Good Wiener Werkstatte electroplated metal and glass ceiling light, circa 1905, 26cm. high.
\$5,065 £2,250



Tiffany pendant coloured glass light shade, 28in. diam.
\$5,625 £2,500



Favrite glass turtle-back and leaded glass chandelier, by Tiffany, 34 1/2in. high.
\$14,625 £6,500



Yellow rose bush leaded glass hanging lamp, by Tiffany, 24 1/2in. diam.
\$23,625 £10,500



A rare calamander leaded glass chandelier, by Tiffany, 48in. high.
\$37,125 £16,500

FLOOR LAMPS



1930's standard lamp, with white glass shade, 188cm. high. \$250 £110



20th century brass floorlamp in Art Nouveau style. \$270 £120



Art Deco wrought iron standard lamp, 167cm. high, circa 1925. \$395 £175



Modernist chromed metal standard lamp with strip light, 1930's, 131.5cm. high. \$495 £220



Bronze and Favrile glass linen fold floor lamp, by Tiffany, 55in. high. \$1,690 £750



Wrought iron and glass floor lamp, circa 1945. 64½in. high. \$2,925 £1,300



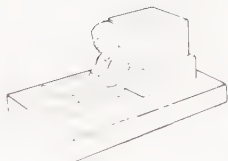
Favrile glass and bronze bridge floor lamp, by Tiffany, 55½in. high. \$3,375 £1,500



Gilt bronze and Favrile glass twelve-light lily floor lamp, by Tiffany, 55½in. high. \$11,700 £5,200



Pugi white marble figure, circa 1925. 45.5cm high. \$395 £175



Russian or French blue marble vase, circa 1930. 8in. high. \$505 £225



Large sculpture of a pouter pigeon, 1920's, 34.5cm. high, in composition stone. \$655 £300



Marble portrait bust of Helen Boucher, 42cm. high, circa 1930. \$745 £330



Marble mandarin duck, 1920's, 17.5cm. high \$745 £330



Marble carving of Loie Fuller, by T. Riviere \$1,745 £775



A superb plaster figure, in relief, 73½in. high. \$1,855 £825

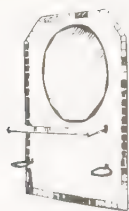


Late 19th century marble and bronze figure of a seated woman, 26½in. high, Italian. \$3,000 £1,400



White marble figure of a woman, by Elie Nadelman, 45cm. high. \$12,960 £6,000

MIRRORS



Bathroom mirror in white vitrolite, surrounded in pink mirror flex, 1940's.
\$100 £50



Large Art Deco mirror frame, early 1920's.
\$170 £75



WMF silvered metal mirror frame, circa 1910, 40.75cm. high.
\$305 £135



Silver dressing mirror, Chester, 1900. \$320 £140



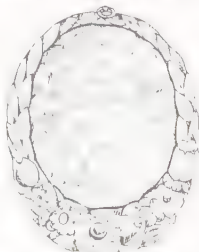
Hammered copper wall mirror, circa 1900, 76cm wide.
\$350 £160



Stylish Hagenauer chromed metal hand mirror, 1920's, 21.5cm. high \$360 £160



Silver Art Nouveau photograph frame, Birmingham, 1903, 22.5cm high
\$370 £165



Sue and Marc Art Deco gilt bronze mirror frame, 1923, 25.6cm high
\$495 £220



A Royal Dux table mirror modelled as a maiden wearing a flowing gown, 43cm high, circa 1910. \$635 £280

MIRRORS



Ramsden & Carr silver and enamel frame, London, 1901, 23cm. high.
\$865 £385



A WMF plated toilet mirror modelled as a standing girl, 51cm. high. \$900 £420



WMF silvered metal mirror frame, circa 1900, 37cm. high. \$1,125 £500



Pewter Art Nouveau mirror frame, 49.5cm. high, German, circa 1900.
\$1,465 £650



Good Lalique glass hand mirror, 1920's, 29.75cm. high. \$1,465 £650



Good carved wood Art Nouveau mirror frame, circa 1900, possibly French, 106cm. high. \$1,490 £680



Rosewood and mahogany mirror, by Louis Majorelle, 67in. high. \$3,715 £1,650

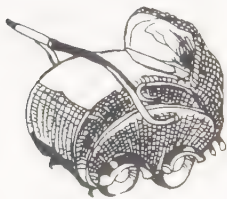


Italian Art Nouveau mirror with carved pearwood frame, 92 1/2 in. high. \$5,850 £2,600



Silver and enamel mirror frame, by Liberty & Co., 18 1/2 in. high. \$6,750 £3,000

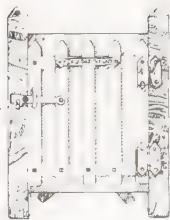
MISCELLANEOUS



English/American wicker-work pram, 4ft. 4in. long. 1930's. \$70 £30



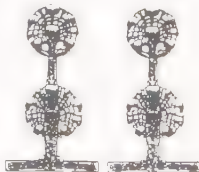
Large, 20th century stained glass window depicting a ship in full sail. \$100 £45



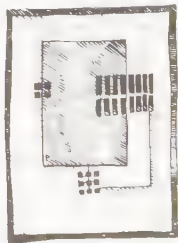
Early 20th century gilt metal, wood and alabaster frame with naughty photograph. 21.2cm. high. \$275 £120



Carpet designed by Charles Rennie Mackintosh, circa 1902-04. 201 x 271cm. \$925 £400



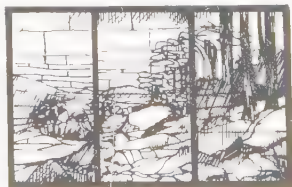
A pair of polished steel fire dogs of the Art Nouveau period, design by E. Gimson, and made by A Bucknell, circa 1910. \$1,915 £850



Attractive Templeton's carpet, by Charles Rennie Mackintosh, circa 1910. 455 x 358cm. \$3,265 £1,450



A triptych stained glass thistle window, by Tiffany, circa 1904. 36in wide \$2,475 £1,100



A triptych stained glass landscape window, circa 1905. \$3,715 £1,650



Early 20th century pewter napkin ring with floral decoration. \$7 £3



White metal watch holder in the Art Nouveau style. 13.5cm. high. \$16 £8



Art Nouveau pewter sugar basin with floral decoration. \$45 £20



Early 20th century Art Nouveau pewter vase, 5in. high. \$70 £30



Octagonal pewter plate in Art Nouveau style, with 'Tudric' hot water jug \$75 £40



Pewter Art Nouveau lady leaning over lily pond, 7in. high. \$90 £40



Pewter fruit tazza, about 1905, 10½in. high. \$115 £50



Early 20th century pewter letter rack decorated with coloured stones. 14in. wide. \$115 £50

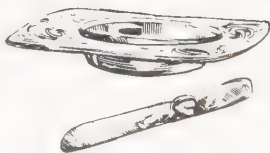


Polished pewter water jug with cane handle, by Liberty & Co, circa 1905 \$115 £50

PEWTER



A pewter mounted green glass decanter, circa 1900, 42.45cm. high. \$135 £60



Liberty & Co. pewter butter dish and knife in 'Tudric' style, after 1903, 17.75cm. long. \$205 £90



'Tudric' coffee pot, by A. Knox. \$205 £90



One of a pair of WMF plated candlesticks on high domed feet, 27.5cm. high. \$200 £95



Gilbert Parks pewter charger, 20 1/4 in. diam., dated 1899. \$250 £110



Kayserzinn pewter jug, circa 1905, 26.75cm. high. \$315 £140



Silvered metal plaque, 'The Spirit of Christmas', by J. G. Hardy, circa 1895, 41cm. long. \$325 £145



Large WMF pewter centre-piece, circa 1900, 70cm. high. \$345 £150



Liberty & Co. 'Tudric' pewter and enamel biscuit box and cover, 14cm. high, after 1903. \$370 £165



Liberty & Co. 'Tudric' pewter stand with glass liner, circa 1905, 16.5cm. high. \$370 £165



Large Moreau silvered pewter tray, 45cm. wide, circa 1900. \$370 £165



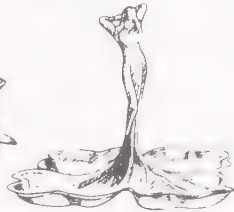
One of a pair of Liberty & Co. 'Tudric' pewter and enamel candlesticks, circa 1905, 16cm. high. \$450 £200



Large metal tazza, 44cm. high, WMF marks, 1900-10. \$450 £200



Liberty & Co. 'Tudric' pewter bowl with glass liner, circa 1905, 10.25cm high. \$450 £200



WMF polished metal centre-piece, circa 1900, 25cm wide. \$480 £220



Large WMF Art Nouveau pewter tureen and cover, circa 1900, 48cm. high. \$495 £220



Liberty & Co. six-piece pewter tea and coffee service. \$640 £285



WMF silvered metal and glass tazza, circa 1900, 36.25cm. high. \$640 £285

PEWTER



Unusual Liberty & Co.
'Tudric' pewter mounted
green glass jug, after 1903
\$640 £285



WMF pewter tazza, circa
1900, 21cm high
\$700 £320



WMF pewter Art Nouveau
garniture, circa 1900.
\$745 £330



Large WMF pewter jardiniere,
32.5cm. wide, circa
1900. \$745 £330



WMF pewter candlestick,
26.25cm. high, circa
1900. \$845 £375



WMF pewter mounted
green glass decanter, circa
1900, 38.5cm. high.
\$900 £400



A pair of Art Nouveau
pewter candlesticks,
16cm high \$900 £400



WMF silvered metal jardiniere
with glass liner, circa 1900,
49cm wide \$1 015 £440



Edeltinn pewter jug,
circa 1901, 33.5cm
high, \$3,715 £1,650

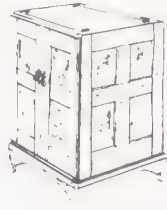
RADIOS & JUKEBOXES



English Celestian radio speaker in mahogany cabinet. \$70 £30



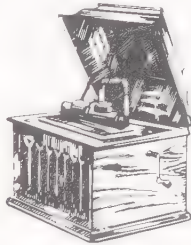
Rare American radio in the form of a Coca-Cola bottle. 24in. high, circa 1930. \$450 £200



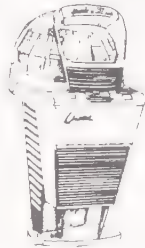
Early 20th century walnut and ebony cabinet, designed by E. Barnsley, to house a gramophone and records. \$565 £250



Ami Continental jukebox in black and chrome finish, 5ft.4in. high. \$690 £300



Good Edison Amberola VIII phonograph, American, circa 1913. \$745 £330



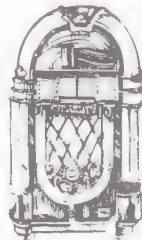
Good Chantel Meteor Music 200 45rpm jukebox with large selection of contemporary discs. \$1,035 £450



Wurlitzer Simplex jukebox, 1936, with twelve records. \$1,970 £875



American Wurlitzer 700 78rpm jukebox in cabinet, by Paul Fuller, circa 1939. 4ft. high. \$2,760 £1,200



Wurlitzer jukebox with twenty-four records. \$4,500 £2,000

**SILVER
BISCUIT BARRELS**



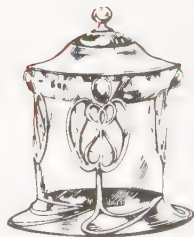
Cut glass biscuit box of Art Nouveau design with a plated stand and cover.

\$55 £25



Circular biscuit barrel, 5½in. high, London, 1931, 17oz.6dw.

\$295 £130



Art Nouveau lantern style biscuitiere with glass liner, 1900.

\$4,275 £1,900

BOWLS



Wm. Hutton & Sons Ltd. silver bowl, London, 1909, 20.5cm diam.

\$360 £160



Jensen silver bowl and spoon, 10cm. high, circa 1947

\$630 £280



A Guild of Handicrafts silver and green enamel bowl, by Charles Robert Ashbee, 11.5cm. high.

\$1,970 £875



Lidded silver rosebowl, by Omar Ramsden.

\$3,600 £1,600



Circular silver rosebowl, by Omar Ramsden, 1935, 70oz.18dw., 11½in. wide.

\$4,500 £2,000

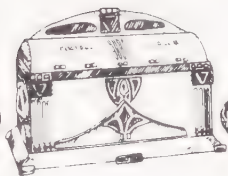


Liberty silver bowl and cover.

\$10,125 £4,500

BOXES

SILVER



Miniature treasure chest in silver. Art Nouveau design. Birmingham, 1904.

\$135 £60

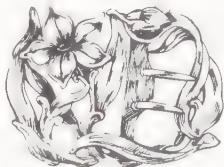
WMF electroplated metal casket with hinged top. circa 1900, 24.25cm. wide.

\$175 £80

William Comyns rectangular trinket box. London, 1904, 20.5cm. long.

\$585 £260

BUCKLES



Rectangular Art Nouveau silver buckle. London, 1902, 5.5cm. wide. \$80 £35

Silver and enamel buckle, 4.6cm. diam. English. circa 1900. \$145 £65

Art Nouveau belt buckle, 7.75cm. wide, probably American, circa 1900. \$205 £90



Liberty & Co. silver belt buckle, 7.25cm. wide. Birmingham, 1900

\$280 £125

A Liberty silver and enamel buckle in the manner of Jessie M King, Birmingham, 1908. \$450 £200

Liberty & Co. silver and enamel belt buckle. Birmingham, 1906, 8.75cm. wide

\$1,180 £525

CANDLESTICKS



One of a pair of WMF electroplated candlesticks, circa 1900, 27cm. high.

\$430 £190



One of a pair of Liberty & Co 'Cymric' silver candlesticks, Birmingham, 1904, 14.75cm. high.

\$495 £220



One of two Cooper Bros. & Sons Ltd. silver candlesticks, 19cm. high, 1903.

\$640 £285



One of a pair of James Dixon & Sons large silver candlesticks, Sheffield, 1918, 30.5cm. high.

\$865 £385



One of a pair of silver candlesticks, by Ramsden & Carr, London, 1904, 8 $\frac{1}{4}$ in. high, 24 $\frac{1}{2}$ oz.

\$1,485 £660



One of a pair of Georg Jensen silver candlesticks, circa 1920, 5 $\frac{1}{2}$ in. high.

\$2,250 £1,000



Fine Georg Jensen silver three-branched candelabrum, circa 1930, 15 $\frac{1}{2}$ in. high.

\$2,815 £1,250



One of a pair of WMF silvered metal candelabra, circa 1900, 50.5cm. high.

\$3,925 £1,700



Stylish German six-light candelabrum, circa 1910, 57cm. high, in silver coloured metal.

\$6,525 £2,900



Large silvered metal Art Nouveau centrepiece, circa 1900, 45cm. high.

\$720 £320



Georg Jensen silver centrepiece, 10 1/2 in. diam.

\$1,855 £825



Large Jensen silver coupe, London, 1922, 19.75cm. high.

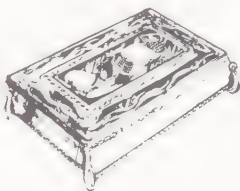
\$3,715 £1,650

CIGARETTE BOXES



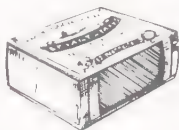
German silvered metal box, circa 1905, 16cm. wide.

\$675 £300



Art Nouveau silver cigarette box, by Omar Ramsden and Alwyn Carr, 5 1/2 in. long.

\$1,015 £450



Unusual enamelled silver box in the form of an outside matchbox, London, 1905.

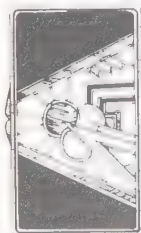
\$1,070 £475

CIGARETTE CASES



German cigarette case, circa 1910, 10.5cm. long.

\$135 £60



Silver and enamel cigarette case, 1925, 8.4cm. wide.

\$495 £220



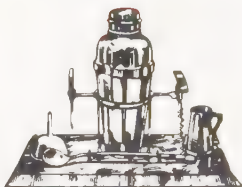
Eggshell lacquer modernist cigarette case, 11.6cm. wide, late 1920's.

\$1,240 £550

COCKTAIL SHAKERS



Edwardian plated cocktail shaker. \$25 £10

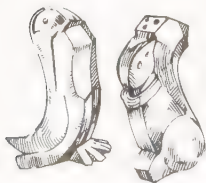


A plated cocktail set of six pieces on a wooden stand. \$35 £15



Georg Jensen silver cocktail shaker, circa 1927, 12¼in. high. \$755 £335

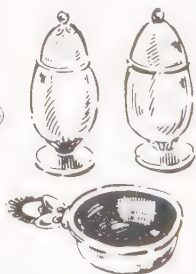
CONDIMENTS



Gallia cruet set, 8cm. high, in silvered metal, 1920's. \$225 £100



Art Nouveau silver mustard pot with blue glass liner. \$270 £120



Jensen silver cruet, circa 1950-55. \$305 £135



One of two Guild of Handicrafts Ltd. pepper casters, circa 1900, 6.5cm. high. \$540 £240



Silver gilt gem-set table salt, by Omar Ramsden, London, 1930. \$1,350 £600



One of a set of six Elkington & Co., cast silver double salt cellars, Birmingham, 1911, 2,964gm. \$8,100 £3,600

CUPS

SILVER



Edwardian silver double-handled prize cup, 5oz. 5dw. \$45 £20



An Art Nouveau cup, by Gilbert Marks. \$340 £150



One of a pair of silver stemmed cups, Chester, 1905. 17.5cm. high. \$565 £250



Wm. Hutton & Sons Ltd., twin-handled silver cup. 28cm. high. London, 1902. \$595 £265



Standing cup, by Omar Ramsden, 7 1/2 in. high. London, 1938. 2.4oz. 15dw. \$620 £275



W. C. Connell silver gilt two-handled cup, 1907. 21.5cm. high. \$675 £300



A rare Nazi Luftwaffe silver honour goblet. \$790 £350



Hammered silver cup, by C R Ashbee, London, 1901. \$1,350 £600



Wm. Hutton & Sons Ltd., two-handled cup and cover, Birmingham, 1903. 32cm. high. \$3,265 £1,450

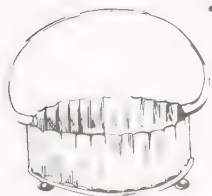
SILVER DISHES



German Art Nouveau silvered metal oval dish, marked WMF, EP, 10in long. \$70 £30

Good Kayserzinn meat dish and cover, 55cm. long, circa 1900. \$340 £150

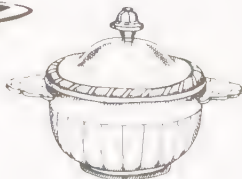
Hukin & Heath silver sweetmeat dish, 14cm. high, London, 1881. \$340 £150



Austrian electroplated dish, 17.5cm. high, circa 1910-20. \$370 £165



Small Jensen silver footed dish, 5.25cm. high, 1936. \$395 £175



French Art Deco electroplated dish and cover, circa 1925, 17cm. wide. \$395 £175



WMF silvered metal dish, circa 1900, 17.5cm. high. \$395 £175



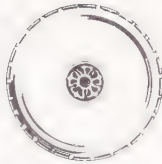
WMF silvered metal Art Nouveau dish, 47cm wide, circa 1900. \$450 £200



WMF silvered metal dish, 26.5cm. wide, circa 1900. \$505 £225



Austrian lobed dish, 27cm diam., after 1922, on four ball feet. \$595 £265



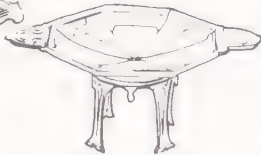
Circular dish, by Omar Ramsden, London, 1930, 6in diam., 6oz 9dwt \$620 £275



Small Wiener Werkstatte dish, circa 1910-20, 10cm. diam. \$790 £350



Attractive WMF silvered metal dish, 21cm. high, circa 1900. \$810 £360



One of three silver dessert dishes, 12 1/2 in. and 11 1/2 in. wide, maker's mark A R. London, 1903, 73oz. \$1,125 £500



One of a pair of Georg Jensen covered sweetmeat dishes, circa 1920, 6in. high. \$1,125 £500



Guild of Handicrafts Ltd silver dish with single loop handle, 19cm. wide, London, 1906 \$1,215 £540

Good hand-hammered Wiener Werkstatte footed dish 34.25cm wide, circa 1910-20. \$2,365 £1,050

Guild of Handicrafts Ltd. silver and enamel twin loop handle dish and cover, 29.5cm. wide, London, 1901 \$1,500 £2,000

SILVER FLATWARE



Hand-hammered silver jam spoon,
London. \$25 £10



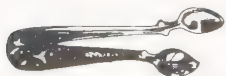
Pair of plated salad servers made in
1920's. \$30 £12



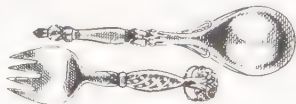
Chester silver sugar tongs with claw-
like grips, 1914, 4½in. long. \$45 £20



Edwardian sugar tongs, Sheffield, 1908,
½oz. \$45 £20



Russian silver gilt and coloured
enamel tongs, circa 1900.
\$360 £160



Georg Jensen silver serving spoon and fork,
circa 1920. \$370 £165



Liberty & Co. 'Cymric' spoon in silver,
Birmingham, 1902, 16cm. long.
\$395 £175



Guild of Handicrafts Ltd. silver butter
knife, circa 1900, 13.5cm. long. \$450 £200



Bubeniczek paper knife, silver coloured
metal handle, Austrian, circa 1900,
32.75cm. long. \$495 £220



Three-piece electroplated place set-
ting, by Charles Rennie Mackintosh,
circa 1912. \$540 £240



One of a set of six 'Cymric' silver and
enamel spoons, by Liberty & Co., 1903.
\$845 £375



Liberty & Co. 'Cymric' silver and enamel
spoon, 1901, 20.5cm. long. \$1,240 £550

SILVER FLATWARE



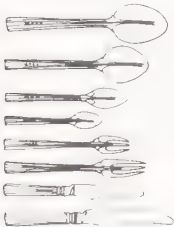
Good set of twelve, Liberty & Co., silver and enamel spoons, Birmingham, 1904.
\$1,240 £550



Part of a set of late 19th century Towle Manufacturing Co. tableware, 99.8oz. \$1,915 £850



Part of a seventy-eight piece Georg Jensen silver flatware service in the Cypress pattern, 1954. \$1,970 £875



Part of forty-four pieces of table silver, by Omar Ramsden, London, 1926-38, 54oz.8dwt.\$2,025 £900



Part of a large lot of early 20th century American flower pattern tableware, mostly silver, by Steiff Co., Baltimore. \$3,375 £1,500



Fine Georg Jensen silver flatware service, circa 1909. \$4,390 £1,950



Part of a Georg Jensen silver flatware service in cactus pattern, ninety-four pieces. \$5,400 £2,400



Part of a Reed & Barton extensive canteen of 'Francis I' pattern tableware, 301oz., circa 1949. \$7,650 £3,400



Three pieces of silver, by Charles Rennie Mackintosh. \$7,875 £3,500

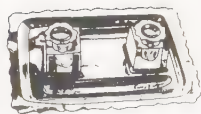
SILVER INKSTANDS



Edwardian silver inkstand, on four ball feet with glass bottle, 4oz. 15dwt.
\$45 £20



White onyx and lapis lazuli inkstand with silver mounts, London, 1922.
\$55 £25



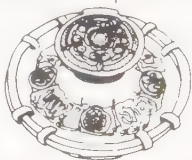
Edwardian silver plated inkwell, by Mappin & Webb, about 1910. \$100 £45



Silver inkstand with glass inkwell, circa 1914.
\$45 £20



Guild of Handicrafts Ltd., silver and enamel inkwell, London, 1907, 7.5cm. high.
\$385 £170



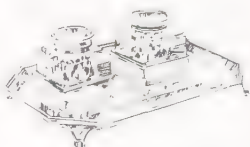
Hammered inkwell of capstan form, by O. Ramsden, London, 1920, 6in. diam.
\$450 £200



20th century electroplated inkstand with centrepiece of a golfer, 21cm. wide.
\$450 £200



English silver inkstand with watch in lid, 1911
\$550 £245



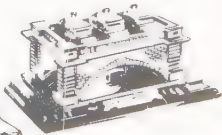
Harrods Ltd. two-bottle inkstand on moulded octagonal base, by R. W. Burbridge, London, 1936, 790gm
\$630 £280



Silver inkstand with two bottles, circa 1912, 24oz.
\$625 £300



Late Victorian oblong inkstand, 31cm. wide, 33oz. 5dwt.
\$700 £310



Turner & Simpson Ltd. silver and electroplated inkstand, Birmingham, 1926, 32.8cm. long.
\$1,580 £700

SILVER JUGS



Late 19th century silver hot water jug, with an ebony handle, 9oz. \$115 £50



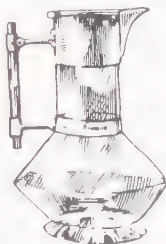
Liberty & Co silver coffee pot, 24.5cm high, circa 1900. \$450 £200



Silver plated glass claret jug, by Christopher Dresser \$450 £200



Victorian silver mounted clear glass lotus claret jug, 7 1/4 in high by F H Stockwell, London, 1880. \$730 £325



Hukm & Heath Ltd silver mounted claret jug, London, 1883, 21.5cm high \$810 £360



Liberty & Co silver coffee pot, Birmingham, 1906, 21cm high with bone handle. \$970 £420



Jensen silver jug, London, 1926, 16.5cm high. \$1,125 £500



Silver mounted claret jug, made by James Powell & Son, London, 1904. \$1,180 £525



Silver wine jug, by Christopher Dresser, circa 1885. \$1,350 £600

MISCELLANEOUS SILVER



Art Nouveau silver plated
tea kettle and lampstand.
\$205 £95



French Art Nouveau
silver smoker's set, circa
1900. \$225 £100



Cylindrical scented flask, by
Ramsden & Carr, 3 1/2 in.
high, London, 1906.
\$280 £125



Heath & Middleton silver
toast rack, 1899, 12.5cm.
wide \$495 £220



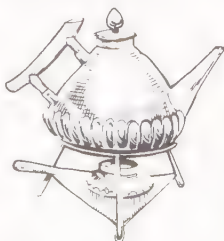
Silver mounted glass jar
and cover, by W. C.
Connell, London, 1901,
14.75cm. high. \$520 £230



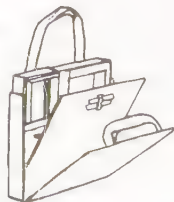
Liberty & Co. silver sugar
basin and tongs, Birming-
ham, circa 1903-06, 4cm.
high. \$540 £240



French Art Nouveau silvered
metal charger, circa 1900,
49.5cm. diam. \$585 £260



Bruder Frank kettle and
stand, circa 1900, in
silver coloured metal.
\$675 £300



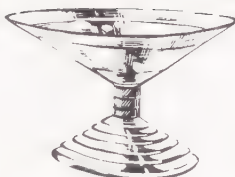
La Minauderie, silver engine-
turned evening bag, by C.
van Cleef and Arpels, about
1935. \$1,180 £525

TAZZAS

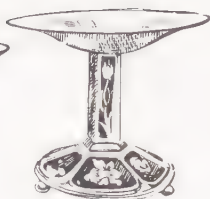
SILVER



WMF silvered metal tazza, 23.25cm. high, circa 1900. \$375 £165



Silver and ivory tazza, by Adie Bros Ltd., 12.75cm. diam., 1930. \$645 £285

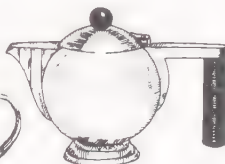


Attractive Guild of Handicrafts Ltd. silver and enamel tazza, London, 1905, 15.25cm. high. \$3,150 £1,400

TEAPOTS



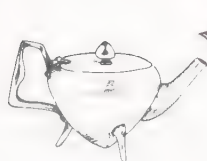
An Eastern silver Art Nouveau teapot, in bulbous gourd form, 8oz. \$190 £85



Stylish Art Deco teapot in silver coloured metal, 1930's, 11.5cm. high. \$340 £150



Hukin & Heath electroplated teapot, 14.5cm. high. \$790 £350



James Dixon & Son electroplated teapot, 1880, 10.5cm. high. \$1,080 £480



Teapot, by Christopher Dresser with the London mark for 1880 and marked Ch. Dresser on the body. \$2,475 £1,100



Good A. A Hebrard teapot, circa 1910, 24cm high. \$32,175 £14,300

SILVER TEA & COFFEE SETS



Unusual three piece electroplated coffee service, 1930's. \$205 £90



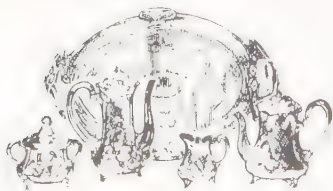
Small silver teaset, London, 1937, 26 $\frac{3}{4}$ oz. \$270 £120



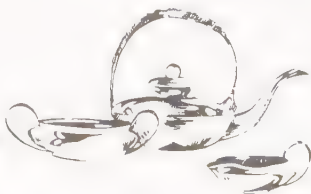
Juventa Art Nouveau electroplated metal coffee service, circa 1900. \$340 £150



A silvered teaset of the 1930's. \$450 £200



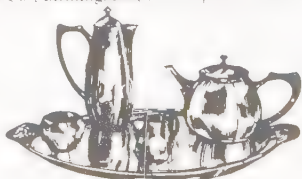
Silver plated tea and coffee service, by WMF, Germany, 1900 \$730 £325



Three piece silver tea service, by Liberty & Co., Birmingham, 1903 \$765 £380



Three-piece silver tea service, London, 1900. \$990 £450



A handmade Art Nouveau five-piece silver teaset, Birmingham, 1919, maker's mark DMW, 70 $\frac{3}{4}$ oz. \$1,350 £600

SILVER TEA & COFFEE SETS



Four-piece teaset, by John Fetter, Glasgow, 1920-21, 78oz.10dw. \$1,465 £650

Silver five-piece tea and coffee service, by Unger Bros. \$1,575 £700



Guild of Handicrafts Ltd silver tea service, by C. R. Ashbee, London, 1900-01. \$1,620 £720



A hand beaten three-piece silver teaset, by Omar Ramsden, 29oz.10dw., each piece inscribed Omar Ramsden, Me Fecit, 1928. \$1,630 £725



Art Deco silver tea service of four pieces, by Jan Puiforcat. \$2,475 £1,100



Jensen four piece coffee set, circa 1930. \$3,715 £1,650

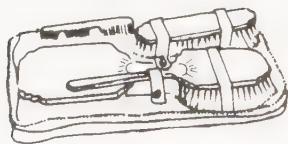


Wm. Hutton & Sons Ltd silver Art Nouveau tea and coffee service with tray, London, 1902-07, \$3,825 £1,700



Silver teaset and tray, by Omar Ramsden and Alwyn Carr, London, 1912-14, 66oz 18dw., not including tray \$4,050 £1,800

**SILVER
TOILET REQUISITES**



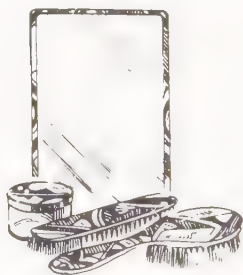
Four-piece, lady's plated dressing table set with enameled mounts. \$30 £12



Art Deco silver box, a powder compact, textured lid slashed with red and black enamel. \$100 £45



Art Deco enameled and silver toilet set, circa 1925-30. \$350 £155



French enameled brush set, mirror 24.25cm. high, maker's mark 'JM', 1930's. \$450 £200



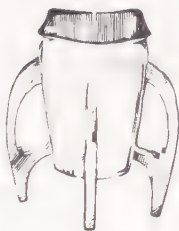
Late Art Nouveau painted eggshell enamel dressing set, signed by N.H. \$745 £330



Edwardian silver dressing table service comprising eighteen pieces, including a pair of candlesticks. \$2,815 £1,250



Art Nouveau large circular double-handled silver flower vase, 12in. high, 18oz.10dwt. \$180 £80



James Rogers silver vase, 14.75cm. high, Sheffield, 1907. \$250 £110



One of a pair of Goldsmiths & Silversmiths Co. Ltd. flower vases, 20cm. high, 16.3oz. \$340 £150



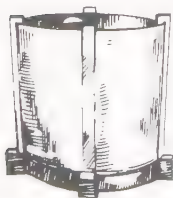
Jensen silver vase, London, 1930, 10.25cm. wide. \$450 £200



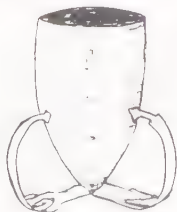
Liberty & Co. 'Cymric' silver and turquoise matrix vase, 11cm. high, Birmingham, 1903. \$540 £240



Puiforcat vase, 1930's, in silvered coloured metal, 14.25cm. high. \$595 £265



Puiforcat vase, 11.75cm high, 1930's. \$640 £285



A fine 'Cymric' vase, by Archibald Knox, Birmingham, 1902. \$955 £425



One of a pair of Jean Dunand patinated metal vases on tripod bases, circa 1920-25, 25.5cm. high \$1,465 £650

STOVES



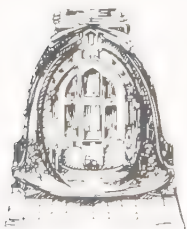
Late 19th century English grey enamelled cast iron stove in the Art Nouveau style. \$170 £75



French Poel a Bois 'Le Selecte' woodburning cast iron stove, circa 1910, 22in. high. \$390 £180



French Godin 392 cast iron stove, circa 1920, 45in. high. \$570 £260



Belgian 'Westminster' free-standing stove, circa 1920, 25½ in high \$765 £350



French Siberia Niledo cast iron bow-fronted stove, circa 1910, 28in. high. \$980 £450

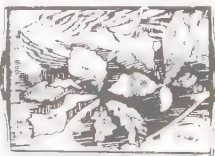


French Soughland 491 cast iron stove in green vitreous enamel, circa 1900, 30in. high. \$1,300 £600

TRAYS



Edwardian oval mahogany tray with brass handles, 74cm long \$115 £50



A Galle marquetry rectangular two-handed tray, 37cm wide \$570 £260



Unusual Galle carved and inlaid fruitwood tray, circa 1900 \$1,630 £725



Rowley Gallery gilt-wood low relief, circa 1925, 71cm. high.
\$135 £60



Hagenauer ebonised wood and bronze gondola, circa 1910-20, 44.75cm. wide. \$220 £100



Art Deco carved walnut standing figure of a nude girl, stamped N. J. Forrest, 1926. \$170 £75



Bas relief wood sculpture, by N. Forrest, 1930's, 93cm. high.
\$810 £360



Carved wood sculpture of a woman, 1930's, 95cm. long.
\$405 £180



Atelier Hagenauer patinated metal and carved wood head, 27cm. high, circa 1920. \$865 £385



Good Hagenauer wood and bronze group of mother and child, 1910-20, 32.5cm. high. \$540 £240



Good Hagenauer carved wood and bronze figure, 23.5cm high, 1910-20
\$1,080 £480



Wood sculpture on slate base, 1930's, 93cm high
\$1,630 £725

INDEX

- Ade Bros Ltd 117
Ami Continental 103
A R 111
Arpels 116
Artificer's Guild Ltd 41
Arts & Crafts 53
Ashbee, Charles Robert 104, 109, 119
Ashtrays, Bronze 10
- Baillie-Scott, M. H. 50
Bakalowitz 78
Barbedienne 89
Barnsley, E. 103
Barrias 16
Barthelemy 14
Bechstein 54
Beds 42
Belleuse-Carrier 26
Beneduce, G. 15
Benson, W. 40
Berge, H. 68
Bernardaud & Cie, L. 30
Biscuit Barrels, Silver 104
Bochin, N. 34
Bookcases 42
Bouraine 14-16
Boutet De Monvel 88
Bowls, China 21
Bowls, Glass 64, 65
Bowls, Silver 104
Boxes 8
Boxes, Silver 104
Bretby 27, 30
Broadwood 54
Bronze 9-19
Bubeniczek 112
Buckles, Silver 105
Bucknell 98
Buffets 42
Bugatti, C. 43-45, 47
Burbidge, R. W. 114
Burgun & Schwere 77
Buthaud, Rene 32
- Cabinets 43, 44
Cadinen 28
Candelabrum, Bronze 10
Candlesticks, Bronze 10
Candlesticks, Glass 66
Candlesticks, Silver 106
Capey, Reco 8
Car Mascots 20
Carr, Allwyn 107, 119
Causse, J. 13
Cave, Walter 54
Ceiling Lights 92, 93
Centrepieces, Silver 107
Chairs 45-48
Chantel 103
Chargers, China 22
Chests 49
- China 21-30
Chiparus, D. H. 18
Christoffle 12
Cigarette Boxes, Silver 107
Cigarette Cases, Silver 107
Cliff, Clarica 29, 30
Clock Sets 38
Clocks 33-38
Clocks, Grandfather 33
Clocks, Mantel 34-37
Cocktail Shakers, Silver 108
Colin, G. 11
Colinet 16, 17
Comyns, William 105
Condiments, Silver 108
Connell, W. C. 109, 116
Cooper Bros. & Sons Ltd. 106
Cooper, John Paul 41
Copper & Brass 39-41
Couches 49
Cristallerie De Pantin 76
Croit 75
Cups, Glass 66
Cups, Silver 109
- Daneway 50
Daum 65, 67, 69, 71, 73, 74, 79, 90, 93
Decorchemont, Francois-Emile 65, 78
De Feure, G. 10
Degue 77
Delon 87
Delvaux 72
De Morgan 22, 31
Descomps, Joe 15
Desks 50
Desky, Donald 62
De Vez 76
Dillens, Julien 86
Dishes, Bronze 11
Dishes, China 23
Dishes, Glass 67
Dishes, Silver 110, 111
Display Cabinets 51, 52
Dixon & Sons, James 106, 117
DMW 118
Doulton 26-28
Dresser, Christopher 41, 115, 117
Dressing Tables 53
Dunand, Jean 32, 41, 50, 88, 121
Dunlop, Sybil 88
Durand 77
Duvernet 16
- Edelzinn 102
Edison 103
Elkington & Co 69, 108
Erdago 25
Erting, H. Chiparus 18

- Faguays 16
 Fahrner 88
 Favre 65, 66, 83, 90-94
 Fetter, John 119
 Figures, Bronze 12-19
 Figures, China 24, 25
 Figures, Glass 68
 Flamand 17
 Flatware, Silver 112
 Floor Lamps 94
 Forester & Sons, Thos. 27
 Forrest, N. J. 123
 Fouquet, Georges 88
 Francais 77, 91
 Francais-Charder 77
 Frank, Bruder 116
 Fuller, Paul 103
 Furniture 42-63

 Galle 8, 52, 60-62, 64-67, 71, 73, 74,
 80, 90, 91, 122
 Gallia 108
 Geist, Zeit 12
 Gemaretti 15
 Genarelli 14
 Gillows & Co. 55
 Gimson 98
 Glass 64-84
 Goard, Marcel 49
 Godin 122
 Goldscheider 25, 37
 Goldsmiths & Silversmiths 35, 36, 121
 Goupy, Marcel 76
 Gray, Eileen 48
 Guigner 17
 Guild of Handicrafts 104, 108, 111,
 112, 114, 117, 119
 Gurschner 12, 90

 Hagenauer 9, 12, 16, 96, 123
 Hair Combs 85
 Hardy, J. G. 100
 Harrods Ltd. 114
 Heal & Sons 43
 Heath & Middleton 116
 Hebrand, A. A. 117
 Hely, L. 16
 Heyner 9
 Horner, Charles 87
 Horton & Allday 73
 Hukin & Heath 110, 115, 117
 Hutton & Sons Ltd., Wm. 88, 104, 109, 119

 Inkstands, Silver 114
 Inkwells, Bronze 11
 Inkwells, Glass 69
 Ivory 25
 Ivory 86

 Jallot, Leon 9, 63
 Jardinieres, Bronze 11
 Jardinieres, China 26, 27
 Jensen, Georg 87, 104, 106-108, 110-
 113, 115, 119, 121

 Jewellery 87, 88
 'JM' 120
 Joass, J. 60
 Joell, Betty 53
 Jones, George 26
 Jugs, China 28
 Jugs, Glass 69
 Jugs, Silver 115
 Juventa 118

 Kann, L. 9
 Kayserzinn 100, 110
 Kitsch 53
 Knox, A. 100, 121
 Korschann 12
 K.P.M. 23

 Lalique 9, 20, 36, 37, 64, 66-74, 81,
 85, 87, 89, 92, 97
 Lamps 89-91
 Larche, Raoul 15, 91
 Legras 75, 76
 Leonard, Agathon 17
 Leytens, Gebroeders 61
 Liberty & Co. 26, 34-37, 40, 43, 45,
 49, 52, 58, 59, 87, 88, 97, 99, 100-
 102, 104, 105, 112, 113, 115, 116,
 118, 121
 Limoges 23, 29, 30
 Limousin 13
 Lindstrand, Vicke 77
 Liqueur Sets, Glass 70
 Lloyd, Frank 48
 Loetz 71, 82
 Luce, Jean 29

 MacIntyre 26, 30
 Mackintosh, Charles Rennie 37, 44, 46,
 47, 48, 50, 61, 63, 98, 112, 113
 Madurell 8
 Majorelle, Louis 42, 44, 61, 62, 63, 96
 Maple & Co. 34
 Mappin & Webb 114
 Marble 95
 Marks, Gilbert 109
 Martin Bros. 22, 26, 28
 Martinware 28, 30
 Massier, Clement 22
 Maugham, Syrie 56, 59
 Meissen 25
 Mercier Freres 42
 Mettlach 32
 Minton 27
 Mirrors 96, 97
 Miscellaneous 98
 Miscellaneous, Glass 71
 Miscellaneous, Silver 116
 Moorcroft 21, 26, 28, 29, 30
 Moreau 101
 Moser 70, 75
 Mucha, Alphonse 88
 Muller Freres 77, 78, 92

- Nadelman 95
 Nancy, A. Walter 68
 Newlyn 39
 N.H. 120
- Obriol 11
 Ohrstrom, Edwin 65
 Olbrich, Josef 37
 Orrefors 65, 76, 77
- Paignant 12
 Pairpoint 89
 Paris, Delvaux 32
 Parks, Gilbert 100
 Passanger, Chas. 23
 Pearson, John 40, 54
 Perfume Bottles, Glass 72, 73
 Perl, K. 14
 Pewter 99-102
 Philippe 16, 17
 Pianos 54
 Plaques, Glass 74
 Poole 24
 Pots, Glass 74
 Powell & Son, James 115
 Preiss, F. 19, 36, 37, 86, 90
 Primavera 8
 Printz, Eugene 44
 Pugi 95
 Puiforcat, Jan 119, 121
- Quimper 30
- Radios & Jukeboxes 103
 Ramsden, Omar 40, 104, 107, 108,
 109, 111, 113, 114, 119
 Ramsden & Carr 97, 106, 116
 Rathbone 40
 Reed & Barton 113
 Renaud 17
 Renouvin 60
 Rhulmann, Jacques 48, 53, 62
 Rie, Lucy 21
 Rietveld, Gerrit 48
 Rigot 14
 Rischmann 13
 Riviere, T. 95
 Rogers, James 121
 Rosenthal 24
 Rousseau, Argy 64, 67, 77, 78
 Rowley Gallery 50, 123
 Royal Copenhagen 31, 32
 Royal Doulton 24, 25, 27, 28
 Royal Dux 23, 25, 96
 Rozenberg 31, 32
 Ruskin 21
 Russell 44
- Sarlandie 23
 Scheid, Adam Georg 76
 Schneider 92
- Screens 54
 Shirayamadani, Katara 23
 Sideboards 55
 Silver 104-121
 Smith, Dyson 15
 Sosson, L. 14
 Soughland 122
 Stands 56
 Stevens & Williams 76
 Steiff Co. 113
 Stockwell, E. H. 115
 Stoves 122
 Strohmenger 54
 Sue and Mare 96
 Suites 57, 58
- Tables 59-62
 Tazzas, Silver 117
 Tea & Coffee Sets, China 29
 Tea & Coffee Sets, Silver 118, 119
 Teapots, Silver 117
 Teraczkuk 90
 Thompson of Kilburn 46, 55
 Thompson, Robert 42
 Thuret, Andre 78
 Tiffany 10, 38, 54, 64-66, 69, 73, 83,
 90-94, 98
 Toilet Requisites, Silver 120
 Towle Mfg. Co. 113
 Trays 122
 Turner & Simpson Ltd. 114
- Unger Bros. 119
- Van Cleef, C. 116
 Van Der Waals, Peter 50
 Vases, Bronze 12
 Vases, China 30-32
 Vases, Glass 75-84
 Vases, Silver 121
 Vever, Henri 85
 Vibert, A. 11
 Villeroy & Boch 30
 Vyse, Charles 21, 25
- Waals, Peter 63
 Walter 65, 68
 Walton, George 47
 Wardrobes 63
 Waring & Gillow 44
 Watcombe Pottery Co. 27
 Webb 67, 69, 71, 84
 Wedgwood 21, 32
 Wiener Werkstatte 12, 24, 32, 41, 93,
 111
 WMF 11, 69, 70, 96, 97, 100-102, 105,
 106, 110, 111, 117, 118
 Wood 123
 Woodall, G. 74, 78, 84
 Wurlitzer 103
- Zsolnay 23

ANTIQUES AND THEIR VALUES



This series of handy volumes has been specially devised to provide dealers and collectors with an extremely comprehensive reference library of antiques and their values. Each volume contains a broadly representative selection of detailed illustrations of specialised antiques accompanied by descriptions and prices computed from recent auction figures.

Titles in the series are

ART NOUVEAU/DECO	FURNITURE 1650-1800
BRONZES	FURNITURE 1800-1950
CADDIES AND BOXES	GLASS
CARVED WOOD	IVORY
CHAIRS AND COUCHES	ORIENTAL ANTIQUES
CIGARETTE CARDS	ORIENTAL CHINA
CLOCKS AND WATCHES	PEWTER
COPPER AND BRASS	SILVER 1650-1800
DOLLS AND TOYS	SILVER 1800-1950
EUROPEAN CHINA	TABLES

Price £2.50

ISBN 0-86248-011-6