

TRINITY COLLEGE
LIBRARY

MOORE
COLLECTION
RELATING
TO THE
FAR EAST

CLASS NO. _____

BOOK NO. _____

VOLUME _____

ACCESSION NO.

138117

PRICED
CHINESE
POTTERY & PORCELAIN
JADES & BRONZES

JAPANESE KO'SSU
TAPESTRIES & LACQUER

Property of
KURT M. SEMON
And Other Owners



Public Auction Sale March 23 and 24 at 2 p.m.

PARKE-BERNET GALLERIES · INC

30 East 57 Street · New York

1948

4090

SALE NUMBER 948
EXHIBITION FROM FRIDAY, MARCH 19, TO TIME OF SALE
WEEKDAYS FROM 9:30 TO 5, CLOSED SUNDAY

CHINESE
POTTERY & PORCELAIN

Jade Carvings · Bronzes
Japanese Ko'ssu Silk Tapestries
And Lacquer Work

BELONGING TO
KURT M. SEMON
Mamaroneck, N. Y.

A CHINESE PRIVATE COLLECTOR

JAN HASBROUCK
Washington, D. C.

PROPERTY COLLECTED BY THE LATE
CARL SCHRAUBSTADTER
NEW YORK

By Order of the Executor

AND OF OTHER OWNERS



Public Auction Sale
March 23 and 24 at 2 p. m.

PARKE-BERNET GALLERIES · INC
NEW YORK 22 · 1948

10. If for any cause whatsoever any article sold cannot be delivered, or cannot be delivered in as good condition as the same may have been at the time of sale, the sale will be cancelled, and any amount that may have been paid on account of the sale will be returned to the purchaser.

11. Unless purchased for resale, the buyer will be required to pay the Federal Excise Tax equivalent to 20 per centum of the price for which sold on jewelry, clocks, silver, gold, furs, etc. However, articles of these categories sold for certain classes of consignors are exempt from this tax. Items in this catalogue subject to the Federal Excise Tax are designated by an asterisk (*).

12. Unless exempt from the payment thereof, the buyer will also be required to pay the New York City sales tax of 2 per centum of the price for which all articles are sold.

13. The Galleries, subject to these Conditions of Sale and to such terms and conditions as it may prescribe, but without charge for its services, will undertake to make bids for responsible parties approved by it. Requests for such bidding must be given with such clearness as to leave no room for misunderstanding as to the amount to be bid and must state the catalogue number of the item and the name or title of the article to be bid on. If bids are to be made on several articles listed as one item in the catalogue, the request should state the amount to be bid on each article, unless the item contains the notation "Lot", in which case the request should state the amount to be bid "For the Lot". The Galleries reserves the right to decline to undertake to make such bids.

14. The Galleries will facilitate the employment of carriers and packers by purchasers but will not be responsible for the acts of such carriers or packers in any respect whatsoever.

15. These Conditions of Sale cannot be altered except in writing by the Galleries or by public announcement by the auctioneer at the time of sale.

Sales Conducted by

H. H. PARKE • L. J. MARION
A. N. BADE • H. E. RUSSELL, JR.
A. NISBET and C. J. DUVEEN, JR.

PARKE-BERNET GALLERIES • INC

30 EAST 57 STREET • NEW YORK 22

Telephone PLAZA 3-7573

Cable PARKGAL

HIRAM H. PARKE • *President*

ARTHUR SWANN and LESLIE A. HYAM • *Vice-Presidents*

CONFIDENTIAL

ORDER OF BARR

...

...

...

...

ORDER OF SALE

FIRST SESSION

TUESDAY AFTERNOON, MARCH TWENTY-THIRD

| | |
|---|---------|
| Japanese Lacquer Inro and Boxes | 1- 22 |
| Japanese and Chinese Ivories | 23- 28 |
| Japanese Ko'ssu Silk Tapestry Gift Cloths and Other Textiles | 29- 61 |
| Chinese Ko'ssu Silk Tapestries and Embroideries | 62- 68 |
| Chinese Pottery and Porcelain | 69-191 |
| Chinese Furniture, Paintings and Decorative Objects | 192-213 |

SECOND AND LAST SESSION

WEDNESDAY AFTERNOON, MARCH TWENTY-FOURTH

| | |
|--|---------|
| Chinese Jade and Other Semi-Precious Mineral Carvings | 214-261 |
| Chinese Early Dynastic and Other Bronzes | 262-281 |
| Chinese and Other Wood and Stone Sculptures | 282-290 |
| Chinese Pottery and Porcelain | 291-427 |

FIRST SESSION

Tuesday, March 23, 1948, at 2 p. m.

CATALOGUE NUMBERS 1 TO 213 INCLUSIVE

JAPANESE LACQUER INRO AND BOXES

- 25- 1. TWO JAPANESE DECORATED LACQUER INRO *XVII-XVIII Century*
Guri lacquer *inro* embossed with two armored warriors with huge bags, one in a boat, the other on horseback, carnelian *ojime*; and one carved in high relief with chrysanthemums and foliage; both enriched with mother-of-pearl.
- 30- 2. TWO JAPANESE TAKA-MAKIYE GOLD LACQUER INRO *XVIII Century*
One embossed with pilgrims, a buffalo and a waterfall, enhanced with *kirikane*, the other with rockery and view of Mt. Fuji across a river, and having an ivory river boat *netsuke*.
- 25- 3. TWO JAPANESE DECORATED GURI LACQUER INRO *XVII Century*
One embossed with a massive gnarled pine tree, inset with *kirikane* squares; the other depicting mounted and unmounted warriors on a river bank, a *daimyo* with attendants approaching in a sampan.
- 35- 4. THREE JAPANESE DECORATED LACQUER AND BARK INRO *XVII-XVIII Century*
One simulating wood, embossed with three black crows in flight, and a brown and gray owl on a golden pine branch; *guri* lacquer *inro* with view of mountains and a duck pond from a summer pavilion, enriched with nacre; and a bark *inro* applied with a black and red lacquer *torii* gate and a buff faïence recumbent spotted stag. [Lot.]
- 25- 5. THREE JAPANESE DECORATED LACQUER INRO *XVII-XVIII Century*
One with allover chrysanthemum decoration, and one with a *howo* bird beside a gnarled tree, in black and gold lacquer and mother-of-pearl; and a lobed *tame* lacquer *inro* with drifting *mei hua* in gold lacquer, lead, and nacre.
- 90- 6. JAPANESE GOLD LACQUER KOTO BOX AND TWO INRO, INLAID WITH MOTHER-OF-PEARL *XVIII Century*
Koto-form box with pearl checker inlay and gold garland decoration at one end; *inro* embossed with pearl, lead, and gold lacquer foliage, signed *Koyetsu*; and a small *inro* exquisitely inlaid with mother-of-pearl peony shrubs and gold butterflies. [Lot.]

- 50- 7. THREE JAPANESE TAKA-MAKIYE GOLD LACQUER INRO XVIII Century
Two embossed with mountain scenes overgrown with trees and shrubbery, one with a high waterfall, inset with *kirikane* squares; the third with cranes flying above chrysanthemum shrubs in a *nashiji* ground.

[See illustration of one]

- 45- 8. THREE JAPANESE TAKA-MAKIYE GOLD LACQUER INRO XVIII Century
Richly embossed decoration embellished with mother-of-pearl and *kirikane*, one with a pine forest, the others with mountain landscapes and waterfalls, thatched cottages, and a woodchopper admiring the view.

[See illustration of one]

- 45- 9. THREE JAPANESE DECORATED LACQUER AND WOOD INRO XVIII Century
Wood *inro* naturalistically carved in the form of a tortoise; gold lacquer *inro* finely embossed with a flight of cranes; and one decorated with a blossoming plum tree with mother-of-pearl enrichment, in a 'shagreen' ground. [Lot.]

[See illustration of one]

10. TWO JAPANESE DECORATED LACQUER INRO AND A PIPE CASE

XVIII Century

- 50- *Nashiji* lacquer *inro* handsomely embossed with a golden peacock, the spread tail with mother-of-pearl 'eyes', wood *manju*; gold lacquer *inro* with a leaping red carp beneath gold lacquer and nacre bamboos, ivory crustacean *netsuke*; and a black pipe case with gold name plaque, and a wrought gold dragon writhing through carved clouds in pursuit of a coral *tama*. [Lot.] (L. I. Private Collector)

[See illustration of one]

- 75- 11. JAPANESE DECORATED IVORY INRO WITH NETSUKE XVIII Century
Applied on one side with a pearl cockatoo upon a perch, and a *koro* on a cabriole stand, the other with a black-wheeled red lacquer cart filled with mother-of-pearl flowers; ivory mask-cluster *ojime*, and demon-mask *netsuke*. (L. I. Private Collector)

[See illustration]

12. TWO JAPANESE DECORATED GOLD LACQUER INRO, WITH NETSUKE

XVIII Century

- 35- One with *taka-makiye* figure of Shou Lao with crane, the reverse with an attendant filling a large bowl of sake held by a *daimyo*, with ivory faces and pearl shoes, ivory rat-on-a-melon *netsuke*; *nashiji inro* depicting turtles climbing boulders in a *togidashi* landscape, black *manju* applied with pearl fish (one missing). (L. I. Private Collector)

[See illustration of one]



TOP ROW: NUMBERS 7-8-9
 SECOND ROW: NUMBERS 10-11-12
 THIRD ROW: NUMBERS 13-14-15
 BELOW: NUMBER 16

13. FOUR JAPANESE DECORATED LACQUER AND WOOD SMALL BOXES
XVIII-XIX Century

65- Nashiji lacquer box with pewter rims, and embossed with a *taka-makiye* fan with nacre staves; *ch'ing*-shaped gold lacquer box decorated with butterflies and a rosetted black and gold hexagonal diaper; cinquefoil box embossed with fans and blossoms; and a round teakwood box applied with a pearl, agate and tinted ivory floral branch. [Lot.] (L. I. Private Collector) Widths 2½ to 5 inches

[See illustration of one]

14. JAPANESE DECORATED GOLD LACQUER BOX XVIII Century

60- Rhomboid box with a rosetted trellis design, one corner extended in the form of a beautiful *kirikane* lacquer *inro* embossed with a chrysanthemum shrub, with wrought gold *ojime*, and aubergine and peacock green enamel *manju*; signed. (L. I. Private Collector) Length 5¼ inches

[See illustration]

15. JAPANESE TOGIDASHI LACQUER TOILET BOX XVIII Century

30- Small square box, the cover exquisitely decorated in the *togidashi* or flat technique with a warrior being accoutred by an attendant, upon a *nashiji* hillside. (L. I. Private Collector) 3⅝ inches square

[See illustration]

16. THREE JAPANESE DECORATED GOLD LACQUER INRO XVIII Century

50- One depicting a *taka-makiye* bridge with mother-of-pearl planks, the reverse with a lead and pearl mosaic 'wicker' jar; one inlaid with pearl stag and hind, the reverse embossed with conifers; the third applied with lead sceptres and pearl chrysanthemum; all decorated in the manner of Korin.

[See illustration]

16A. JAPANESE FINELY DECORATED LACQUER BOOK BOX (BUNKO)

150- XVIII Century
Deep rectangular box and cover, richly decorated in a *nashiji* ground, in *taka-makiye* enhanced with *kirikane*, depicting a turbulent stream winding between rocky banks, with a thatch-roofed cottage at left and a mountain waterfall beyond; the sides repeating the scene with variations. *Nashiji* interior. Has case. (N. Y. Private Collector) Length 10¾ inches

17. TWO JAPANESE DECORATED LACQUER INRO XVII-XVIII Century

25- *Guri* lacquer *inro* depicting a *daimyo* reclining beside a reed fence observing a huge rising moon; and one in *ro-iro* decorated with a green-tinted ivory cicada upon trailing stems of gold and mother-of-pearl foliage, with carved ivory *ojime* and lacquer *manju*.

Illustration of numbers 13 to 16 inclusive appears on the preceding page

18. FOUR JAPANESE DECORATED GOLD LACQUER SMALL BOXES

XVIII Century

40- One in the form of a cluster of thatch-roofed cottages embellished with nacre; fan-shaped box with landscape decoration; lozenge-shaped 'butterfly' box; and a *togidashi* square box centring a dragon roundel. [Lot.] Widths $2\frac{1}{4}$ to 3 inches

19. TWO JAPANESE DECORATED GOLD LACQUER BOXES

XVIII-XIX Century

40- Oblong dispatch box in *nashiji* lacquer embossed with pine branch clusters; and a screen-shaped box decorated with cock and hen pheasant beneath a cherry tree, quail on a flowering river bank, and a trellis panel. (L. I. Private Collector)
Lengths 9 and $4\frac{3}{4}$ inches

20. JAPANESE DECORATED LACQUER BOX AND TWO INRO XVII Century

30- *Nashiji* lacquer *ko-go* embossed with gourds and foliage; *guri* lacquer *inro* depicting groups of Buddhistic deities in a lake shore temple; and one embossed with sages and deities, one carrying a gold fan. [Lot.]

21. FOUR JAPANESE WROUGHT SILVER AND SENTOKU TSUBA

XVII-XVIII Century

55- Silver guard exquisitely wrought with gold and silver peonies and a bird, signed; *sentoku* quatrefoil *tsuba* beautifully decorated in gold, silver and *shibuichi* with mountains, pines, a flight of birds, an arched bridge, etc.; another in *sentoku* with sages examining a scroll beneath a moon; and one in *shibuichi* with figure of Daikoku. [Lot.] (L. I. Private Collector)

22. NINE JAPANESE METAL TSUBA WITH WROUGHT DECORATION

XVII-XVIII Century

45- In *shakudo*, *shibuichi*, *sentoku*, and iron, variously wrought in gold, silver and *shakudo*, etc., with floral ornament, rockery and bamboos, cock, geese, mischevious monkeys, Daikoku with attendant, and Toba on his mule. [Lot.] (L. I. Private Collector)

JAPANESE AND CHINESE IVORIES

23. PAIR CHINESE IVORY SEALS

Ming

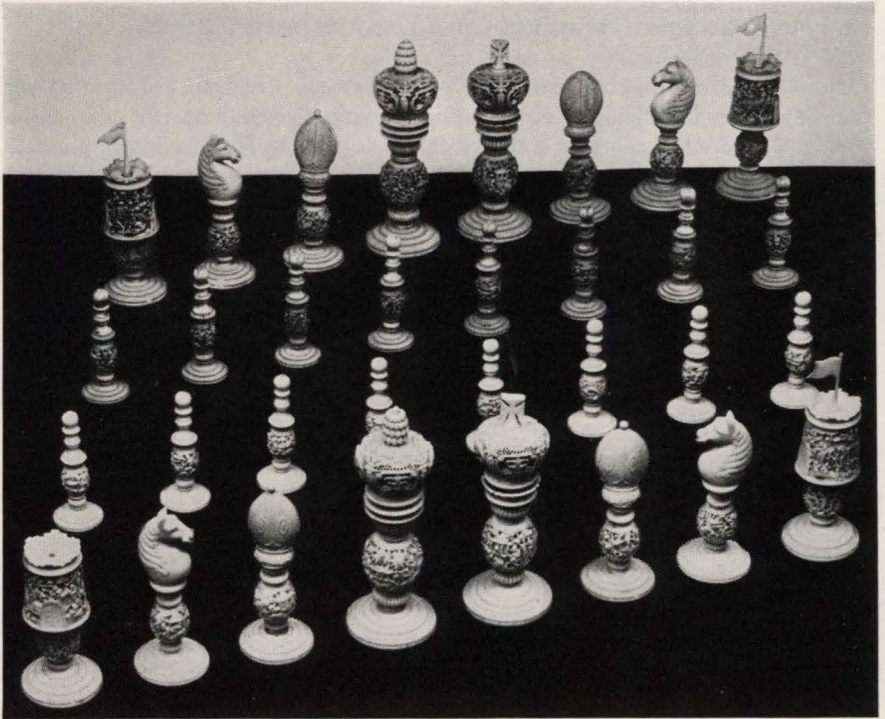
35- Cubical seals carved with calligraphic figures tinted with vermilion.

 $2\frac{5}{8}$ inches square

24. CHINESE CARVED IVORY STATUETTE OF KUAN YIN

Ming

170- Figure in voluminous robes, seated upon a lotus throne, her right hand holding a box; mellowed streaky brown patina. Has stand; in case. Height $4\frac{1}{2}$ inches



[NUMBER 25]

360 25. CHINESE CARVED AND TINTED IVORY CHESS SET

Elaborately carved and turned in baluster knops with minute figures and pavilions amid trees; the rooks with a second tier of figures on land and in boats amid trees, the knights with horses' heads, the bishops with mitres, the king and queen with reticulated crowns; in plain and red-tinted ivory. One rook lacks pennant.

[See illustration]

65 26. JAPANESE CARVED AND TINTED IVORY GROUP

Depicting a peasant with a small boy climbing upon his back, and another at his feet, offering ears of corn; the figured costumes tinted and parcel gilded. Signed. (N. Y. Private Collector)

Height 8¾ inches

35 27. JAPANESE CARVED IVORY STATUETTE

Standing figure with 'mushroom' hat and fish baskets, holding a fish and rod, imperfect. Signed. (N. Y. Private Collector)

Height 8¾ inches

28. JAPANESE CARVED IVORY GROUP

20- Smiling pilgrim in short robe, a gourd and rucksack slung over his shoulder, a seated monkey at his feet; rustic base, signed. Repaired. (*N. Y. Private Collector*)
Height 9¼ inches

JAPANESE KO'SSU SILK TAPESTRY GIFT CLOTHS
 AND OTHER TEXTILES

25- 29. FOUR KO'SSU SILK AND GOLD TAPESTRY FIGURAL GIFT CLOTHS
 (FUKUSA)

Woven with Oshikio on his crane, a group of painted bowls, and two with the Spirits of the Pine; in rich gold and colored silk, on sky blue and green grounds. (*Schraubstadter*)
About 25 x 28 inches

25- 30. FOUR KO'SSU SILK AND GOLD TAPESTRY GIFT CLOTHS (FUKUSA)

Variouly woven with ducks, an elephant with attendants, and two with the Spirits of the Pine; blue, green and gray grounds. (*Schraubstadter*)
About 25 x 28 inches

55- 31. SILK AND GOLD BROCADE SASH (OBI)

Fawn field woven with scattered fan and floral motives in pastel colors linked by gold wave scrolls. (*Schraubstadter*)
13 feet 2 inches x 27 inches

25- 32. FOUR KO'SSU SILK, GOLD AND SILVER TAPESTRY FIGURAL
 GIFT CLOTHS (FUKUSA)

Woven in colorful silk and metal threads with figures of Girojin and acolytes, Yebis and others; in landscapes with blue and old gold grounds. Minor imperfections. (*Schraubstadter*)
About 27 x 32 inches

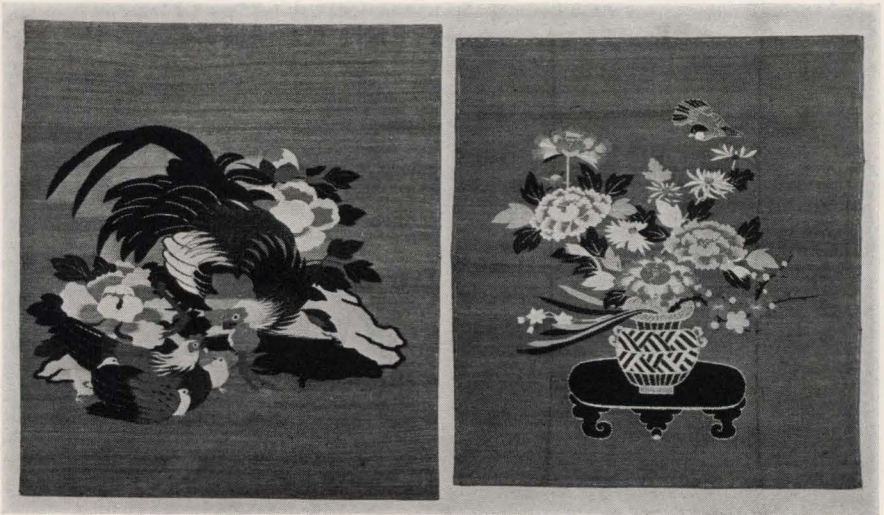
20- 33. FOUR KO'SSU SILK AND GOLD TAPESTRY FIGURAL GIFT CLOTHS
 (FUKUSA)

Type of the preceding, depicting Oshikio on his crane, an audience scene with the emperor and empress, and others; varied grounds. (*Schraubstadter*)
About 25 x 28 inches

25- 34. FOUR KO'SSU SILK, GOLD AND SILVER TAPESTRY FIGURAL
 GIFT CLOTHS (FUKUSA)

Two depicting the legend of Shiba-onko, another the Spirits of the Pine, and one a fan decorated with figures; sky blue grounds. (*Schraubstadter*)
About 27 x 29 inches

[See illustration of one on the following page]



[NUMBER 45]

[NUMBER 44]

45. FOUR KO'SSU SILK, GOLD AND SILVER TAPESTRY GIFT CLOTHS
(FUKUSA)

25- Colorfully woven with roosters, flying cranes and swimming ducks, heightened in gold and silver threads, on varying blue and salmon pink grounds. Minor imperfections. (*Schraubstadter*) *About 25 x 28 inches*

[See illustration of one]

46. FOUR KO'SSU SILK AND GOLD TAPESTRY GIFT CLOTHS (FUKUSA)

20- Type of the preceding, without silver details; blue and green grounds. (*Schraubstadter*) *About 28 x 30 inches*

47. FOUR KO'SSU SILK, GOLD AND SILVER TAPESTRY GIFT CLOTHS
(FUKUSA)

20- Woven with crayfish, pelicans, phoenixes, and a landscape with Fujiyama and cranes; in varied colors, on old gold and beige grounds. Minor imperfections. (*Schraubstadter*) *About 27 x 30 inches*

48. FOUR KO'SSU SILK, GOLD AND SILVER TAPESTRY GIFT CLOTHS
(FUKUSA)

25- Three woven with groups of cranes, the fourth with peonies in a bat-shaped cartouches; in crimson, black and white on blue and old gold grounds. (*Schraubstadter*)
About 28 x 32 inches

49. FOUR KO'SSU SILK AND GOLD TAPESTRY FIGURAL GIFT CLOTHS
(FUKUSA)

20- Various depicting Daikoku, the Spirits of the Pine and other legendary characters in pastel silks and gold, on blue grounds. (*Schraubstadter*)
About 27 x 31 inches

50. FOUR KO'SSU SILK AND GOLD TAPESTRY GIFT CLOTHS (FUKUSA)

25- Patterned in gay colors with fans and lacquer boxes, three heightened in gold; blue and fawn grounds. (*Schraubstadter*)
About 27 x 31 inches

51. FOUR KO'SSU SILK, GOLD AND SILVER TAPESTRY GIFT CLOTHS
(FUKUSA)

20- Type of the preceding, on varying blue grounds. (*Schraubstadter*)
About 27 x 28 inches

52. FOUR KO'SSU SILK, GOLD AND SILVER TAPESTRY GIFT CLOTHS
(FUKUSA)

15- Type of the preceding, one depicting four *fukusa*; blue and gray grounds. (*Schraubstadter*)
About 28 x 32 inches

53. TWO KO'SSU SILK TAPESTRY ALTAR CLOTHS (UCHISHIKI)

25- Particolored cloths woven with diagonally patterned designs of exotic birds and a *Fu* lion; one with outlines of gold thread. [Lot.] (*Schraubstadter*)
50 and 37 inches square

54. KO'SSU SILK AND GOLD TAPESTRY FIGURAL HANGING

25- Woven with a swaying female dancer in slate blue and gold 'embroidered' robes, on a buff ground; brocade border. (*Schraubstadter*)
6 feet x 44 inches

55. KO'SSU SILK AND SILVER TAPESTRY TEMPLE HANGING (MIOKURI)

20- Sapphire blue field woven with a large serpentine dragon in peacock blue and silver with highlights of gold and apricot; brocade border. (*Schraubstadter*)
6 feet 8 inches x 37 inches



[NUMBER 56]

56. IMPERIAL KO'SSU SILK AND GOLD TAPESTRY TEMPLE BANNER
OF THE EIGHT SENNIN

60 Long vertical hanging with scarlet ground, woven in bright silks and gold with figures including Kinko astride the carp, Tekkai, Chokwaro and others, topped by Oshikio on a white crane, and a large gold Imperial crest; on *burgauté* lacquer rod. (*Schraubstadter*) 19 feet 4 inches x 26 inches

[See illustration of part]

15- 57. KO'SSU SILK AND GOLD TAPESTRY TEMPLE HANGING (MIOKURI)
Fluctuating salmon pink ground, woven with particolored vermiculate rosettes
joined by wavy silver gray ribbons. Minor imperfections. (*Schraubstadter*)

6 feet 4 inches square

20- 58. EIGHT KO'SSU SILK AND GOLD TAPESTRY GIFT CLOTHS (FUKUSA)
In assorted sizes, and including figural, animal and floral subjects, on varied
grounds. Together with eight small *uchishiki*. Some imperfections. [Lot.]
(*Schraubstadter*)

20- 59. EIGHT KO'SSU SILK, GOLD AND SILVER TAPESTRY SMALL ALTAR CLOTHS
(UCHISHIKI)
Patterned with diagonal designs including *arhats*, exotic birds, and blossoms.
Minor imperfections. [Lot.] (*Schraubstadter*)

26 x 27 inches

20- 60. EIGHT KO'SSU SILK, GOLD AND SILVER TAPESTRY SMALL ALTAR CLOTHS
(UCHISHIKI)
Woven with characteristic diagonal patterns featuring phoenixes, *Fu* lions, and
flowers; almost all with gold and silver highlights. Minor imperfections.
(*Schraubstadter*)

About 26 x 28 inches

15- 61. EIGHT KO'SSU SILK, GOLD AND SILVER TAPESTRY SMALL ALTAR CLOTHS
(UCHISHIKI)

Type of the preceding. Minor imperfections. [Lot.] (*Schraubstadter*)

About 26 x 27 inches

CHINESE KO'SSU SILK TAPESTRIES AND EMBROIDERIES

85- 62. PAIR KO'SSU SILK TAPESTRY PANELS *K'ang Hsi*
Depicting pairs of exotic birds, perched on peach and prunus boughs springing
from rockery; woven in shaded blue and sepia on old gold grounds. Framed.
(*Semon*)

46 x 26½ inches

Collection of Karl Bacher, Frankfurt-am-Main

63. RARE IMPERIAL SILK AND GOLD EMBROIDERED TABLE COVER

Ch'ien Lung

85- A superb example in tomato red silk, beautifully worked in pastel colors with a
border and panel of lotus and peony scrollings, the panel containing five medal-
lions minutely worked in silks and gold thread, with 'peacock plumage', in a
pattern of pairs of large butterflies, emblematic of Happiness. (*Semon*)

5 feet 3 inches x 45 inches

Collection of William G. Moore, New York, 1937

64. KO'SSU LAPIS BLUE SILK AND GOLD TAPESTRY MANDARIN ROBE

Ch'ien Lung

15- Woven with five-clawed golden dragons disputing the precious pearl, amid pastel-colored clouds interspersed with bats, lanterns and symbols; deep multi-colored border of crested diagonal waves. Minor imperfections. (*Pa. Private Collector*)

From Komor & Komor, Hongkong

50- 65. KO'SSU SILK TAPESTRY HANGING

K'ang Hsi

Depicting four dignitaries assembled upon a rocky summit, one in the foreground riding a mule across a bridge; *fêng huang* crest panel; in shaded blues and buff; mounted on crimson fabric. Minor imperfections. (*Schraubstadter*)

7 feet x 49½ inches

10- 66. KO'SSU SILK TAPESTRY HANGING

Depicting a court lady with two attendants standing upon a rocky river bank, a *fêng huang* flying through clothes overhead; woven in shaded blues and tan on a beige ground; brocade border. Minor imperfections. (*Schraubstadter*)

7 feet x 57 inches

10- 67. KO'SSU SILK AND GOLD TAPESTRY CANTONNIERE

Ming

With ogival arch, the old gold spandrels woven with dragons and *fêng huang* amid henna and green clouds; deep blue upper border of clouds and peony roundels. Minor imperfections. (*Schraubstadter*)

8 feet x 6 feet 4 inches

110- 68. SILK AND GOLD EMBROIDERY TEMPLE HANGING

Chia Ch'ing

Sapphire blue ground, sumptuously worked in gold, green, blue and oyster white, with a central calligraphic panel within double borders enclosing the figures of the Star Gods, vessels of the *po ku*, and gourd vines with butterflies; the end panels with dragons, *Fu* lions and cloud motives.

12 feet x 8 feet 7 inches

Collection of Mrs Dorothy Draper Hamlen, Parke-Bernet Galleries, Inc, 1946

25- CHINESE POTTERY AND PORCELAIN

69. FIVE BLUE AND WHITE PORCELAIN SNUFF BOTTLES

Ch'ing

Assorted bottles, with varying figural decoration in underglaze blue. [Lot.] (*Hasbrouck*)

17-⁵² 70. FIVE PORCELAIN, AGATE AND OTHER SNUFF BOTTLES

Plain smoky brown agate flask; cylindrical porcelain bottle with dragon decoration; and three in glass with varying carved and interior-painted motives, one slightly cracked. [Lot.] (*Hasbrouck*)

65-
71. ROSE DU BARRY 'EGGSHELL' PORCELAIN WINE CUP Yung Chêng
Delicately potted and coated with a uniform *rose du Barry* glaze. Four-character mark of the reign underfoot. In case. (*Chinese Private Collector*)

Diameter $3\frac{3}{4}$ inches

1750
72. THREE CRACKLED CABINET VESSELS WITH BLUE AND WHITE DECORATION K'ang Hsi and Yung Chêng
Brush holder, gallipot and covered rouge box; the crackled buff ground with blue and white peony, horse and utensil motives. One with apocryphal Ch'êng Hua mark. Two have stands. [Lot.] (*Hasbrouck*) Heights $1\frac{1}{2}$ to $4\frac{3}{4}$ inches

13-
73. T'U TING YAO ANIMALISTIC WATER COUPE Early Ming
In the form of a three-legged toad, a circular aperture on the back and a tiny orifice at the mouth; crackled creamy glaze. Has stand. (*N. Y. Private Collector*) Length 3 inches

Collection of Mrs Samuel T. Peters, Parke-Bernet Galleries, Inc, 1944

40-
74. THREE EARLY DYNASTIC CABINET ARTICLES T'ang and Sung
Green and brown splash-glazed bowl with molded floral decoration, and green and white apple-form covered jar, repaired; and a *yüeh yao* covered rouge box with elephant finial. [Lot.] Diameters $2\frac{3}{4}$ and $3\frac{3}{4}$ inches

65-
75. TWO TEMMOKU WARE JARS Sung
Covered round jar in deep purplish black 'eggplant' glaze; the other exhibiting bold copper-red 'oil' spots, the lower portion unglazed.

Heights $3\frac{3}{4}$ and $4\frac{1}{4}$ inches

Collection of C. Edward Wells, New York

160-
76. PAIR IMPERIAL BEAN RED WINE CUPS WITH FRUIT DECORATION Late K'ang Hsi or Yung Chêng
Coniform cup, coated with a vitreous liver red glaze, the white interior painted with colorful fruits and seeds. Six-character mark of K'ang Hsi underfoot. In case. (*Chinese Private Collector*) Diameter $3\frac{1}{4}$ inches

50-
77. PAIR FAMILLE VERTE BOWLS WITH DRAGON AND PHOENIX DECORATION Ch'ien Lung
Ogival bowl decorated in the brilliant *famille verte* colors with dragons and *fêng huang* below a collar of the *pa chi-hsiang*. Apocryphal six-character mark of K'ang Hsi underfoot. (*N. Y. Private Collector*) Diameter 4 inches

Collection of Yamanaka & Co., Inc., New York

40-
78. ASHES OF ROSES HEMISPHERICAL WATER COUPE K'ang Hsi
Semiglobular, with short incurvate neck; incised with three dragon roundels under an ashes of roses glaze, flecked with peachbloom, and six-character *nien hao* underfoot; age crack, small repair. Diameter $4\frac{3}{4}$ inches

35- 79. FUKIEN PORCELAIN CRAB COUPE Ming
 Modeled in the form of a crab nested within a nelumbian leaf; in rich creamy white glaze. Has stand. (*Chinese Private Collector*) Length 5¾ inches

110- 80. CHÜN YAO PURPLE FOOTED BOWL Sung
 Rounded bowl with contracting lip, on ring foot; buff stoneware, the exterior coated with a granular purple glaze of varying tones, the interior with a crackled sky blue glaze with eroded surface; underfoot glazed sky blue with purpled edge. (*N. Y. Private Collector*) Diameter 4 inches
 Collection of Mrs Samuel T. Peters, Parke-Bernet Galleries, Inc, 1944
 Exhibited at the Metropolitan Museum of Art, New York

1750 81. THREE TEMMOKU CONIFORM BOWLS Sung
 Two with deep purplish black vertically streaked glaze, the third with copper red rim and 'oil' spots. Repaired. [Lot.] Diameters 4 to 5 inches

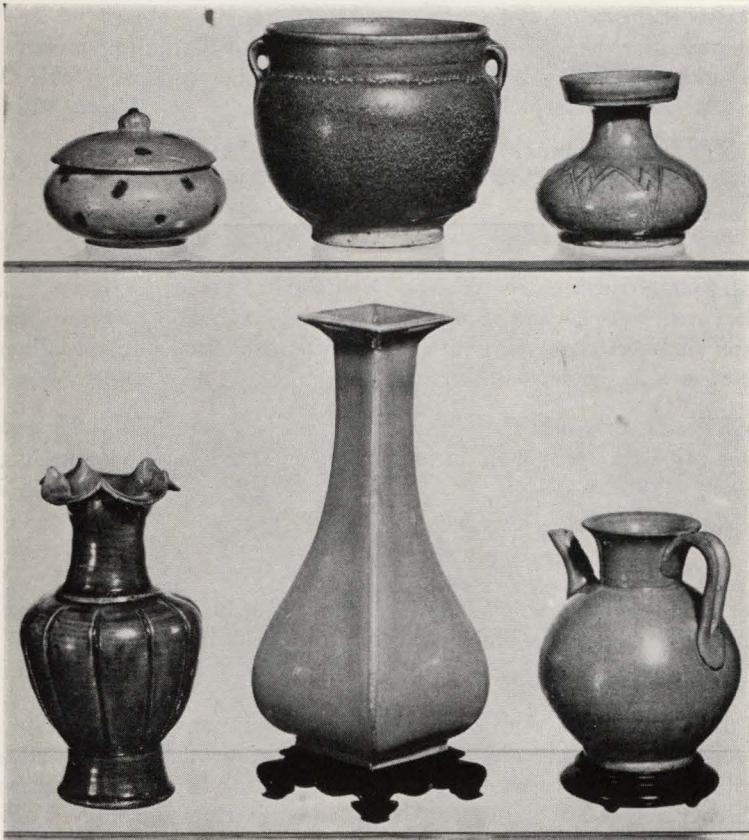
110- 82. YÜEH YAO PYRIFORM CABINET BOTTLE WITH INCISED DECORATION T'ang
 Squat pear-shaped bottle with flaring molded lip, the base incised with lotus petals; with minutely crackled grayish green glaze. (*Semon*) Height 3½ inches
 From Walter Hochstadter, New York
 Illustrated in Warren E. Cox, *The Book of Pottery and Porcelain*, vol. 1, p. 101, fig. 230
 [See illustration]

170- 83. SPOTTED YÜEH YAO COVERED ROUGE BOX T'ang
 Compressed bulbous jar and dome cover having floral finial, invested with a fluctuating gray-green glaze flecked with scattered sepia markings. Rare. (*Semon*) Diameter 3¾ inches
Note: A scarce and interesting example, and a forerunner of the later spotted celadons (*tobi seiji*).

From Walter Hochstadter, New York
 Described and illustrated in Warren E. Cox, *The Book of Pottery and Porcelain*, vol. 1, p. 101, pl. 26
 [See illustration]

45 84. GREEN 'SOFT' CHÜN YAO TWO-HANDLED JAR Southern Sung
 Deep broad-mouthed jar, the short neck with two suspension loops, coated with an unctuous grayish celadon glaze with buff fleckings, some forming a band about the shoulder. (*Semon*) Height 4¾ inches
 From Walter Hochstadter, New York
 Described and illustrated in Warren E. Cox, *The Book of Pottery and Porcelain*, vol. 1, p. 168, fig. 329

[See illustration]



AT TOP: NUMBERS 83-84-82

BELOW: NUMBERS 86-87-85

100-
85. YÜEH YAO SMALL EWER

T'ang

Globose ewer with trumpet mouth, fluted loop handle and short spout; invested with a minutely speckled grayish celadon glaze. Has stand. (*Semon*)

From Mathias Komor, New York

Height 5½ inches

[See illustration]

85-
86. CUCUMBER GREEN GLAZED STONEWARE LOBED VASE

Early Sung

Slender melon-form footed vase with incurvate neck and 'pinched' cinquefoil rim; coated with a minutely crackled camellia-leaf green glaze. (*Semon*)

From Mathias Komor, New York

Height 7½ inches

[See illustration]

87. CELADON QUADRANGULAR VASE

Sung

270-

Attenuated pear-shaped vase of square section, with flaring lip; invested with an unctuous sea green glaze meshed with almost imperceptible crackle. Minor kiln crack. Has stand. (*Semon*) Height $9\frac{3}{4}$ inches

From Walter Hochstadter, New York

Illustrated in Warren E. Cox, *The Book of Pottery and Porcelain*, vol. I, p. 148, fig. 300

[See illustration on the preceding page]

88. CHIA CHING BLUE AND WHITE DISH WITH YELLOW GROUND

Ming

30-

Sketched with five-clawed dragons pursuing the jewel amid flames, in blue and white on an Imperial yellow ground, the interior with matching medallion. Six-character *nien hao* underfoot. Diameter $6\frac{5}{8}$ inches

89. BROWN STONEWARE TWO-HANDLED JAR

Late Chou or Ch'in

60-

Globous jar with two small loop-handles; encircled with narrow furrows. (*Semon*) Height $4\frac{3}{4}$ inches

From Mathais Komor, New York

90. TWO CHIEN YAO CONIFORM BOWLS

Sung

20-

One of conventional *temmoku* type with purplish black glaze streaked with copper red; and one with brown and tan 'tortoise-shell' glazes. [Lot.]

Diameters $4\frac{1}{2}$ and $4\frac{3}{4}$ inches

91. BLUE AND WHITE 'RICE GRAIN' PORCELAIN BOWL

Ch'ien Lung

12 ⁵⁰

Deep round bowl sketched in cobalt blue with a rim collar of *ju-i* heads and a base collar of lappets, between which is a 'rice grain' diaper pattern pierced to translucency in the paste and covered by the greenish white glaze. (*N. Y. Private Collector*) Diameter 5 inches

92. TWO GREEN AND YELLOW GLAZED TERRA COTTA STATUETTES

T'ang

20-

Squatting muscular demon with bare torso, supporting upon his shoulder a small bowl with flanged rim; and a seated *Fu* lion; coated with leaf green, nasturtium brown and yellow glazes. [Lot.] Heights $5\frac{1}{4}$ and $4\frac{1}{2}$ inches

93. CHIEN YAO CONIFORM BOWL

Sung

15-

The exterior coated with a dark brown and yellow tortoise-shell glaze, the interior with circlets of small 'oil' spots; repaired. Together with a Han marbled terra cotta double-gourd vase. [Lot.] Diameter $4\frac{1}{2}$ inches

94. BLUE AND YELLOW SMALL BOWL

Ming

20-

The Imperial yellow ground reserved with strapwork motives and bands of scrolls, vines and lappets, in underglaze blue. Has stand. Diameter $5\frac{1}{4}$ inches



AT TOP: NUMBER 99

AT CENTRE: NUMBERS 96 AND 95

BELOW: NUMBERS 97 AND 98

95. CELADON AND STARCH BLUE PORCELAIN GROUP OF THE TWIN GENII
Ch'ien Lung

70 Smiling figures of the twin genii of Harmony and Contentment in loose celadon and starch blue robes, one holding a fluted bowl, the heads partially coated with a pale gray glaze; on brown rockery base; minor imperfections.

Height 9¾ inches

[See illustration]

30- 96. SPLASH-GLAZED POTTERY TRIPOD DISH WITH INCISED DECORATION T'ang
 Shallow round dish on three mammiform feet, the interior incised with a lotus medallion and coated with green, brown and creamy white splash glazes.
Diameter 8½ inches

[See illustration]

30 97. BLUE AND IVORY SPLASH-GLAZED TERRA COTTA JAR T'ang
 Inverted pyriform jar, coated with a minutely streaked ivory glaze vertically streaked with pale blue.
Height 5½ inches

[See illustration]

25- 98. SPLASH-GLAZED POTTERY OBLATE JAR T'ang
 The shoulder glazed with nasturtium yellow and blue petal-form lappets, above a band of green and white splash glazes; base unglazed.
Height 5¼ inches

[See illustration]

75- 99. THREE YELLOW-GLAZED TERRA COTTA MORTUARY STATUETTES OF MUSICIANS T'ang
 Female figures: two kneeling, and playing instruments; and a dancer in swaying pose; coated with a finely crackled greenish yellow glaze. Small repairs.
 [Lot.] Heights 7½ to 10¼ inches

[See illustration]

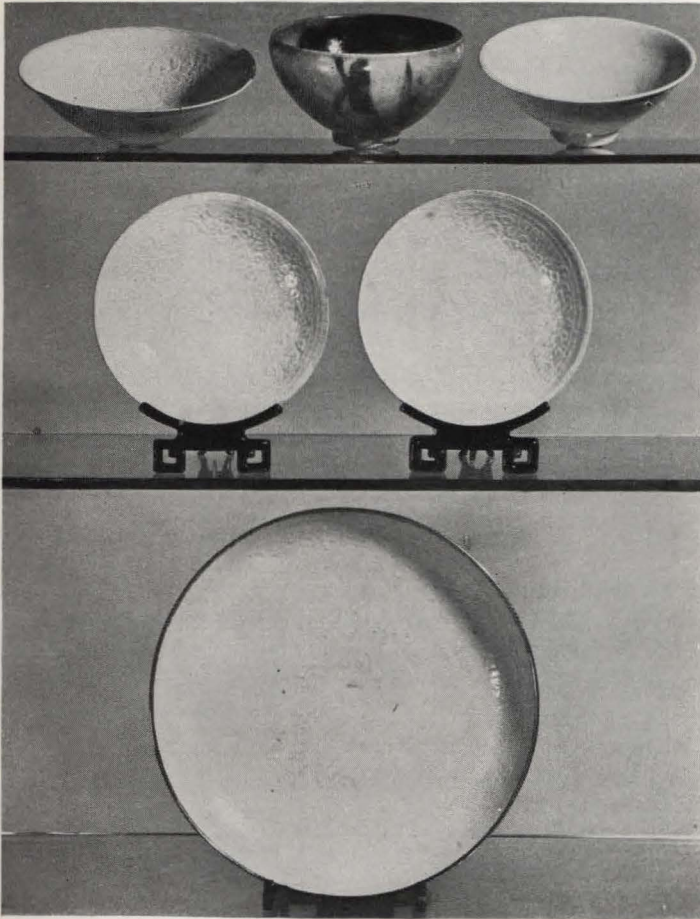
27- 100. TURQUOISE BLUE CABINET BOTTLE Yung Chêng
 Coated with a transparent minutely crackled turquoise blue glaze revealing faint potting marks. Minor age crack.
Height 5½ inches

75- 101. YÜEH YAO FLORIFORM SCALLOPED BOWL T'ang
 Deep round bowl with scalloped and petal-molded rim, high ring foot; coated with a greenish stone gray glaze with areas of giant crackle. Minor repair.
 (Semon) Diameter 5¾ inches
 From Walter Hochstadter, New York

70- 102. PAIR TEA GREEN QUINTUPLE VASES Ch'ien Lung
 Cluster of four tapering quadrangular vases surrounding and attached to a conforming larger vase; coated with a minutely speckled tea green glaze. One with impressed seal mark underfoot.
Height 7¾ inches

22- 103. TZ'U CHOU TIGERWARE SMALL PILLOW Sung
 Incurvate top and flaring sides decorated in sepia with tiger markings on a finely crackled nasturtium yellow ground. In case.
Length 5¾ inches

Illustration of numbers 96 to 99 inclusive appears on the preceding page



TOP ROW: NUMBERS 107-108-105
 AT CENTRE: NUMBER 106
 BELOW: NUMBER 104

65-

104. PAI TING YAO BOWL WITH MOLDED DECORATION

Sung

Shallow bowl, the interior molded with a medallion and border of floral scrolls; invested with a transparent oyster white glaze; bronze rim. Minor age cracks.

Diameter 11¾ inches

[See illustration]

- 25- 105. YING CH'ING YAO CONIFORM BOWL Sung
The interior incised with floral scrolls; enveloped in a pellucid shadowy blue glaze charged with a fine vertical crackle. Diameter 6½ inches

[See illustration]

- 50- 106. PAIR PAI TING YAO BOWLS WITH PHOENIX DECORATION Sung
Shallow round bowl, the interior molded in low relief with *fêng huang* amid peony scrolls, bordered by angular frets; invested with an oyster white glaze exhibiting medium crackle. Have stands. Diameter 7 inches

[See illustration]

- 30- 107. YING CH'ING YAO PHOENIX AND PEONY BOWL Sung
Flaring round bowl, the interior lightly molded with phoenixes amid peony scrolls, bordered by frets; the delicate white paste coated with a bluish white glaze. Minor age cracks. Diameter 7¼ inches

[See illustration]

- 40- 108. CHÜN YAO BOWL Yüan
Deep rounded coniform bowl coated with a thick crackled sky blue glaze exposing nearly an inch of brown paste above the foot, the interior with a single finger-shaped splash of green and purple. (*N. Y. Private Collector*) Diameter 7¾ inches

Pottery Exhibition, Japan Society, New York, 1914, no. 243

Collection of Mrs Samuel T. Peters, Parke-Bernet Galleries, Inc, 1943

[See illustration]

- 35- 109. SANG DE POULET BALUSTER-FORM CABINET VASE Yung Chêng
Graceful vase, the exterior coated with a gently fluctuating oxblood glaze paling to ashes of roses at the lip. Height 6 inches
From Ralph M. Chait, New York

- 40- 110. TZ'U CHOU DOUBLE-GOURD WINE POT Sung
The spout in the form of a dragon's head, the handle its tail, and the body covered with imbrications in sepia, giving the creamy ground a reddish tinge. (*N. Y. Private Collector*) Height 6 inches
Collection of Mrs Samuel T. Peters, Parke-Bernet Galleries, Inc, 1944

Illustration of numbers 105 to 108 inclusive appears on the preceding page



TOP ROW: NUMBERS 114-111-114

AT CENTRE: NUMBER 115

BELOW: NUMBERS 112 AND 113

35-

111. FAMILLE VERTE HEXAGONAL PUZZLE JUG

K'ang Hsi

Hexagonal pear-shaped jug with scrolled handle and monster-mask spout, the neck pierced with small holes; enameled in the characteristic colors with court ladies and floral motives; small repairs. Has stand. *Height 7¾ inches*

Collection of Robert E. Tod, New York

[See illustration]

- 35- 112. FAMILLE VERTE BOWL WITH FIGURAL DECORATION *K'ang Hsi*
 Coniform bowl with ring foot; painted with groups of figures pursuing the Four Liberal Accomplishments, in muted shades of green, yellow and aubergine with touches of iron red. Minor imperfections. Has stand. *Diameter 8¾ inches*

[See illustration]

- 30- 113. FAMILLE VERTE BOWL WITH MARINE DECORATION *K'ang Hsi*
 Hemispherical, on high ring foot; the exterior reserved with marine cartouches in a yellow band of floral scrolls and phoenixes in bright enamels, the rims with floral and butterfly reserves. Carefully repaired. Has stand. *Diameter 7½ inches*
 From Edward I. Farmer, Inc., New York

[See illustration]

- 60- 114. PAIR FAMILLE VERTE BELL-SHAPED BOWLS *Yung Chêng*
 Delicately painted with green and iron red floral scrolls beneath a collar of calligraphic figures, the interior with wide diapered rim having lotus reserves. Minor imperfection. Have stands. *Diameter 6¼ inches*

[See illustration]

- 100- 115. PAIR FAMILLE VERTE SHELL-SHAPED DISHES *K'ang Hsi*
 The cavetto decorated with a flower-filled green vase and utensils heightened with iron red, blue and gold, within a matching speckled floral border. Minor kiln crack. *Length 7½ inches*

[See illustration]

- 30- 116. PAIR CLAIR DE LUNE DISHES WITH PEACHBLOOM DECORATION *Yung Chêng*
 Shallow round bowl, invested with a pale moon blue glaze interrupted by three peachbloom fish motives. Six-character *nien hao* underfoot. One repaired. *Diameter 6¾ inches*

- 10- 117. STRAWBERRY RED HEMISPHERICAL BOWL *Yung Chêng*
 Well-potted bowl on ring foot; coated with a flocculent strawberry red glaze paling at the lip; white interior. Six-character *nien hao* and minor age crack underfoot. (*N. Y. Private Collector*) *Diameter 6 inches*
 Collection of Yamanaka & Co., Inc., New York

Illustration of numbers 112 to 115 inclusive appears on the preceding page



170_ AT TOP: NUMBERS 120-119-120 BELOW: NUMBER 118

118. PAIR THREE-COLOR GLAZED BISQUE ELEPHANT GROUPS *Yung Chêng*
 Exquisitely modeled figure of a *lohan* seated upon a white caparisoned elephant; the rider is dressed in aubergine peaked hat, loose turquoise blue blouse, aubergine trousers and boots, and holds a rhinoceros horn and coral; the scowling face and arms in unglazed white bisque. Height 9½ inches

[See illustration]

45- 119. BLUE AND WHITE BRONZE-FORM EWER (KUANG) *Ming*
Kuang-shaped vessel molded with scalloped vertical flanges and a spurred loop handle, the cover surmounted by a small vase, umbrella and curved billet; decorated with lotus scrolls. Minor repair. Six-character *nien hao* of Lung Ch'ing underfoot. Height 8¾ inches

[See illustration]

- 50- 120. FOUR TURQUOISE AND MOHAMMEDAN BLUE GLAZED
TERRA COTTA STATUETTES *Ming*
Standing figures in long robes, each wearing a forked official hat; the faces,
hands and rectangular bases unglazed. One repaired at neck.

Heights 9 to 9½ inches

[See illustration of two on the preceding page]

- 20- 121. T'U TING YAO CONIFORM BOWL *Sung*
Lightly incised upon the interior with leaf sprays; coated with a thin creamy
white glaze meshed with fine crackle, the rim unglazed. Minor age crack.

Diameter 7½ inches

- 40- 122. TURQUOISE BLUE POTTERY BOWL WITH FOLIATED DECORATION *Yüan or Early Ming*
Conical bowl with constricted sides; decorated in black on the interior with
three foliated scrolls and a character-like design in the cavetto, under a finely
crackled turquoise blue glaze through which the buff paste is slightly visible.
Three spur marks in cavetto. (*Semon*)

Diameter 7¾ inches

- 45- 123. THREE-COLOR PORCELAIN HANGING FLOWER VASE *Ming*
Wide-mouthed ovoglobular jar pierced with four holes upon the shoulder, and
enameled on a whorled aubergine ground in light and dark green and yellow
with waves splashing from jutting rocks, and symbols of the *pa chi hsiang*, to-
gether with drifting white plum blossoms. Base has minor age crack. Has wood
stand, and cover with green jade spherical finial. (*N. Y. Private Collector*)

Height 6¼ inches

- 53- 124. SET OF FOUR SAN T'SAI FAN-SHAPED DISHES *K'ang Hsi*
Decorated in leaf green and aubergine with a lotus cluster on a yellow ground,
the flat rim with hatchings and floral reserves.

Length 7½ inches

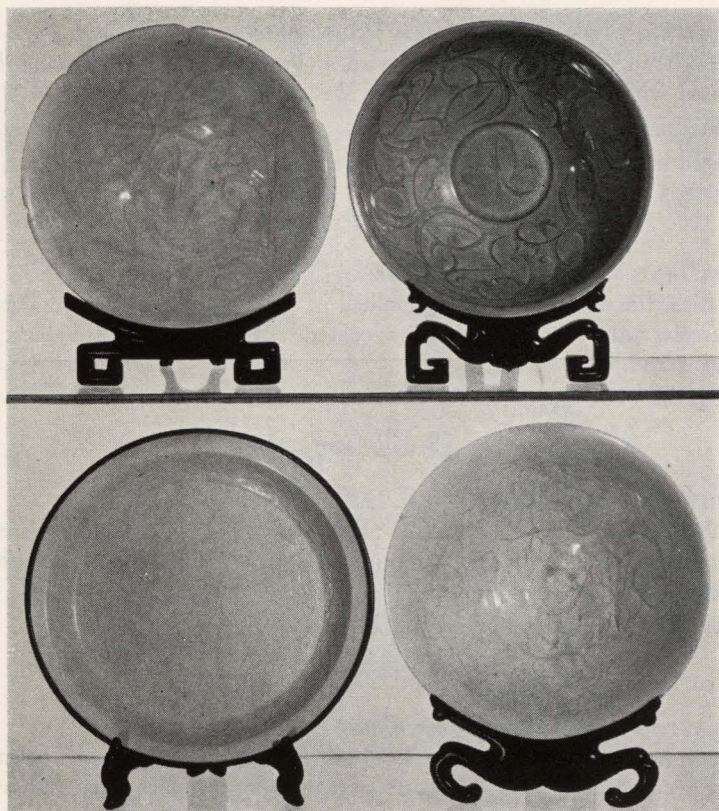
- 27- 125. BLUE AND WHITE BOTTLE WITH PEACHBLOOM
DECORATION *Ch'ien Lung*
With oblate body and tall incurvate neck, decorated with scattered butterflies
and floral sprigs in blue and white, heightened with peachbloom. Small repairs.

Height 7 inches

- 110- 126. KIANGNAN CREAMWARE GALLIPOT *Sung*
Stout baluster-form gallipot with narrow flaring neck, molded with an un-
dulating peony branch beneath a closely crackled cream white glaze; has stand.
(*Semon*)

Height 8 inches

Collection of Mrs S. K. DeForest, Parke-Bernet Galleries, Inc, 1936



AT TOP: NUMBERS 127 AND 130

BELOW: NUMBERS 129 AND 128

180-

127. YING CH'ING YAO FLORAL BOWL

Sung

Delicately potted coniform bowl with hexafoil rim, ring foot, the interior incised with a floral design; coated with a transparent shadowy blue glaze. Has stand. (*Semon*)

Diameter 7½ inches

From Mathias Komor, New York

[See illustration]

128. YING CH'ING YAO BOWL WITH INCISED DECORATION

Sung

120- Coniform bowl, the interior incised with a close design of boys among flowers, and coated with a shadowy blue glaze. Has stand. (*Semon*) Diameter 8 inches
From Walter Hochstadter, New York

Illustrated in Warren E. Cox, *The Book of Pottery and Porcelain*, vol. I, p. 134, fig. 275

[See illustration]

129. PAI TING YAO DISH WITH ANIMAL DECORATION

Sung

425- Round dish, the cavetto delicately molded in low relief with running deer amid floral scrolls, and a *semé* floral border; coated with an oyster white glaze. Metal rim. Has stand. (*Semon*) Diameter 8½ inches

From Mathias Komor, New York

[See illustration]

130. CELADON BOWL WITH FLORAL DECORATION

Sung

160- Hemispherical bowl with molded rim; the interior incised with formalized boys amid blossoms, the exterior with diagonal hatchings; coated with a grayish green glaze. Has stand. (*Semon*) Diameter 7¼ inches

From Walter Hochstadter, New York

[See illustration]

131. GLAZED POTTERY KUAN YIN GROUP

T'ang

35- Robed and hooded figure of Kuan Yin seated in the *lalita* pose on a primitively modeled recumbent animal; invested with a glaze varying from old ivory to creamy white, with traces of red, green and gold lacquer, mostly about the base. (*N. Y. Private Collector*) Height 8 inches

Collection of Mrs Samuel T. Peters, Parke-Bernet Galleries, Inc, 1944

132. PAIR BLUE AND WHITE PEONY DISHES

Yung Ch'eng

20- Delicately painted in deep underglaze blue with a peony medallion and scroll border. Six-character *nien hao* underfoot. Diameter 8¼ inches

133. MAZARINE BLUE DOUBLE-GOURD VASE

Ch'ien Lung

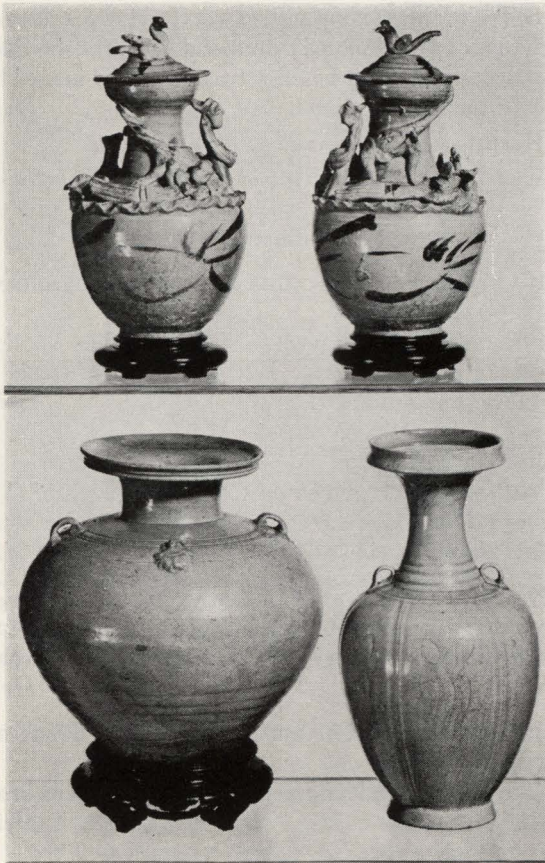
60- Constricted vase with slender incurvate neck; invested with a velvety mazarine blue glaze of high lustre. Height 8¼ inches

134. CLAIR DE LUNE AND PEACHBLOOM BOTTLE

Ch'ien Lung

15- Pear-shaped bottle, coated with a delicate moon blue glaze marked with peach-bloom cloud areas outlined in pale celadon. Height 7¾ inches

Illustration of numbers 128 to 130 inclusive appears on the preceding page



AT TOP: NUMBER 137

BELOW: NUMBERS 136 AND 135

250
135. YÜEH YAO PEAR-SHAPED VASE

T'ang

Vertically paneled ovoid body with tall flaring neck, molded lip and two tiny strap handles; incised with graceful floral motives, and coated with a partially crackled pale bluish green glaze. From Shang-lin-Hu. (*Semon*)

Height 11¾ inches

From Walter Hochstadter, New York

Illustrated in Warren E. Cox, *The Book of Pottery and Porcelain*, vol. 1, p. 121, pl. 34

[See illustration]

- 190- 136. YÜEH YAO TWO-HANDLED JAR *Six Dynasties or T'ang*
 Globose jar with squat broad-rimmed cylindrical neck, the shoulder applied with two suspension loops and two tiny bodhisattvas, joined by incised bands; invested with a waxy gray green glaze. (*Semon*) *Height 9½ inches*
 From Walter Hochstadter, New York
 Illustrated in Warren E. Cox, *The Book of Pottery and Porcelain*, vol. I, p. 101, fig. 231

[See illustration]

- 130- 137. PAIR YING CH'ING YAO MORTUARY URNS WITH ORIGINAL COVERS *Pre-Sung*
 Pear-shaped, the dome cover with bird finial, the shoulder applied with human and animal figures; in greenish gray glaze sketched with sepia floral motives. Minor repairs. Have stands; in case. *Height 9½ inches*

[See illustration]

- 60- 138. PAIR TZ'U CHOU STATUETTES OF CHILDREN *Ming*
 Seated boy holding a lotus and ornament to his chest; coated with a creamy white glaze, with details picked out in sepia. *Height 9 inches*

- 55- 139. FUKIEN PORCELAIN STATUETTE OF KWAN YU *Late Ming or K'ang Hsi*
 The armored god of War with shoulder and waist draperies, gesticulating with his hands and seated upon a rockery base, with turtle. Some repairs and imperfections. *Height 9¼ inches*

- 30- 140. PAIR GREEN AND BROWN GLAZED TERRA COTTA STATUETTES OF EARTH MONSTERS *Yüan*
 Gibbous hyena-like monsters in leaf-green glaze, seated upon a brown and yellow glazed drum. *Height 9¼ inches*

- 35- 141. THREE GLAZED TERRA COTTA STATUETTES *Ming*
 Standing figures of officials, two with Mongolian sugar-loaf headdresses, the third with official hat; varied aubergine and greenish black glazes, with turquoise blue details. *Heights 8½ to 9¼ inches*

- 55- 142. OSTRICH-EGG WHITE OVOID GALLIPOT *Sung*
 With small aperture and flaring foot; coated with a minutely crackled ostrich-egg glaze halting short of the base. *Height 9½ inches*

- 40- 143. PAIR YELLOW AND GREEN GLAZED POTTERY ANIMALISTIC ROOF TILES *Ming*
 Amusingly modeled ram in yellow glaze streaked with brown, seated upon his haunches; green vaulted base. One repaired. *Heights 8¾ and 9½ inches*

Illustration of numbers 136 and 137 appears on the preceding page



[NUMBER 144]

275-

144. CHÜN YAO BRONZE-FORM TRIPOD BOWL

Sung

Shallow round bowl, the exterior rim and base studded with circlets of bosses, on three *ju-i* form feet. Hard paste, the underfoot with olive glaze, the interior and exterior clothed in a sky blue glaze faintly tinged with mauve and exposing the brown underbody upon the projecting ornaments. Underfoot is incised with the numeral *i* (one). Has stand. (*N. Y. Private Collector*) Diameter 10 inches
Pottery Exhibition, Japan Society, New York, 1914, no. 289

Exhibition of Early Chinese Pottery and Sculpture, Metropolitan Museum of Art, New York, 1916, no. 122, and illustrated in the catalogue
Collection of Mrs Samuel T. Peters, Parke-Bernet Galleries, Inc, 1943

[See illustration]

30-

145. CELADON AND BROWN BISQUE STATUETTE

Late Ming

Seated deity in 'embroidered' celadon robes, a tortoise at his feet; the head, hands and feet in unglazed brown bisque porcelain. Rockery base. Minor age cracks.

Height 9¾ inches



[147]

[146]

[148]

65-

146. TURQUOISE AND MOHAMMEDAN BLUE PORCELAIN STATUETTE *Ming*
Enthroned figure of an official in voluminous Mohammedan and turquoise blue robes, the hands in contemplative pose, the head and scrolled hat in unglazed cream bisque; on molded oblong base with yellow *Fu*-lion masks. Repaired.
Height 11 1/4 inches

[See illustration]

110-

147. FA HWA TALL GALLIPOT *Ming*
Slender biberon, the Mohammedan blue ground reserved with peony sprays and stylized leaves outlined in slip and executed in turquoise blue and buff, the shoulder molded with bead garlands and Buddhist symbols. Lip skilfully repaired.
Height 11 1/2 inches

[See illustration]

210-

148. BLUE AND WHITE GALLIPOT WITH FIGURAL DECORATION *Early Ming*
Small mouthed biberon, sketched in deep underglaze blue with a sage and acolyte conversing in a wooded landscape; between lotus scroll and plantain leaf borders. (*N. Y. Private Collector*)
Height 13 inches

[See illustration]



[149]

[150]

[151]

50-

149. LANG YAO PEAR-SHAPED VASE

K'ang Hsi

Graceful vase with incurvate neck and trumpet mouth; coated with a flocculent strawberry red glaze shoaling to pale celadon at the lip, and gently darkening toward the base.

Height 13¼ inches

[See illustration]

45-

150. KINGFISHER GREEN AND GOLD TWO-HANDLED VASE
SIMULATING ENAMEL*Ch'ien Lung*

Ovoid vase coated with a bluish green glaze flecked with deep blue and copper red, and molded with two gilded loose-ring handles and scattered blossoms and utensils enclosing sky blue and gold dragon cartouches, simulating bronze. Seal-mark of the reign underfoot. Has stand.

Height 11 inches

[See illustration]

151. CELADON DOUBLE-GOURD VASE

Ch'ien Lung

Constricted vase curving to a small-apertured neck; coated with a pellucid celadon glaze paling slightly at base. Seal mark of the reign underfoot. Has stand. (*Chinese Private Collector*)

Height 13 inches

50-

[See illustration]

152. POLYCHROMED TERRA COTTA EQUESTRIAN GROUP

Sui

Soldier with rucksack, his arms flexed before him, astride a prancing horse; painted buff, with traces of vermilion and black. Repaired.

Height 10¼ inches



[NUMBERS 154 AND (ABOVE) 153]

- 65- 153. BLUE AND WHITE 'HAWTHORN' GINGER JAR *K'ang Hsi*
Ovoid, the fluctuating blue ground hatched to represent the thawing of the Winter's ice, and reserved with straggling prunus branches. Has cover and stand.
Height 8 inches

[See illustration]

- 110- 154. FAMILLE VERTE OCTAGONAL PLAQUE *K'ang Hsi*
Leaf-molded rim and speckled green border of peony and insect reserves enclosing a prunus medallion with flying songbirds, in aubergine, iron red and sepia heightened with gold. Has stand.
Diameter 16½ inches

[See illustration]

20- 155. CLAIR DE LUNE SHALLOW DISH WITH INCISED DECORATION *Ming*
 Shallow round bowl with ring foot, the interior delicately incised with allover lotus scrolls; coated with a viscous moon blue glaze. *Diameter* 10½ inches

20- 156. GREEN AND YELLOW GLAZED TERRA COTTA BUDDHISTIC GROUP *Late Ming or Ch'ing*
 Depicting Kuan Yin in turquoise blue hood, yellow and green gown, seated upon a Fu lion and holding an infant in her lap; oblong base. Repaired.
Height 10½ inches

40- 157. THREE CUCUMBER GREEN GLAZED TERRA COTTA STATUETTES *Ming*
 Two figures of Mongolians in green robes with unglazed sugar-loaf hats tinted with red; and an attendant with green robe and brown skirt, standing with clasped hands; unglazed bases.
Heights 10 to 11¾ inches

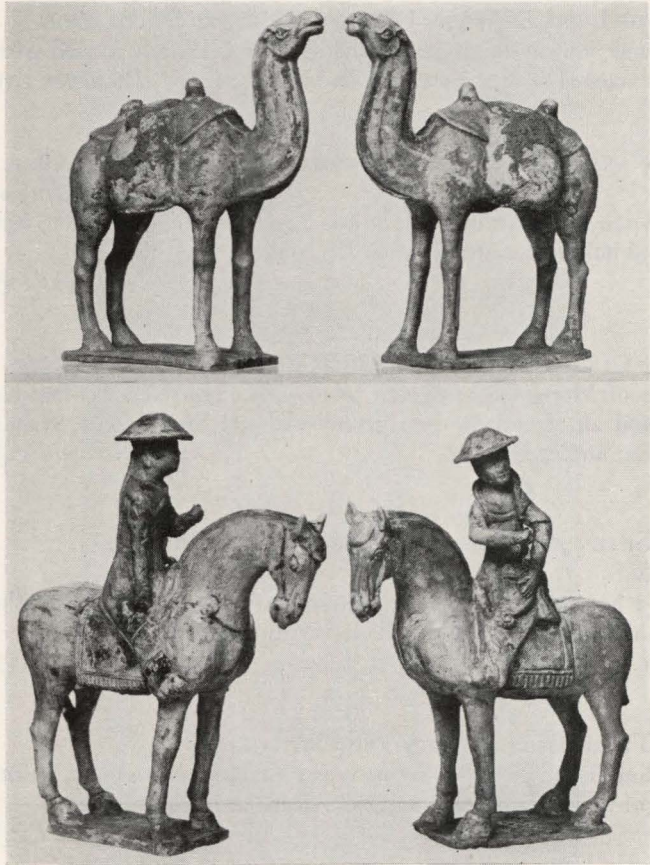
30- 158. PAIR GREEN AND YELLOW GLAZED POTTERY MARINE ROOF TILES *Ming*
 Formed as a horned carp with erect body, on vaulted base; in splashed green glaze with highlights of yellow and nasturtium brown; repaired.
Height 11½ inches

180- 159. PAIR TERRA COTTA EQUESTRIAN STATUETTES *T'ang*
 Plump smiling figure on galloping pony; in unglazed terra cotta, painted white with traces of vermilion, green and black. Repaired. Have stands.
Total height 12 and 12½ inches

80- 160. IRIDESCENT CUCUMBER GREEN GLAZED POTTERY JAR *Han*
 Broad-mouthed inverted pear-shaped jar with incised collar; coated with a streaked iridescent cucumber green glaze.
Height 13¾ inches

80- 161. IRIDESCENT CUCUMBER GREEN GLAZED POTTERY JAR *Han*
 Similar to the preceding, but smaller.
Height 12¾ inches

85- 162. CELADON TWO-HANDLED BRONZE-FORM VASE *Ch'ien Lung*
 Quatrefoil pear-shaped vase with two monster-head loop handles; coated with a uniform pale celadon glaze. Seal mark of the reign underfoot. (*Hasbrouck*)
Height 13½ inches



[NUMBERS 164 AND (ABOVE) 163]

170-

163. PAIR YELLOW-GLAZED TERRA COTTA STATUETTES OF CAMELS *Sui*
Bactrian camel with head haughtily upraised, a blanket and pair of unglazed
saddle bags upon his back; washed with an ivory yellow glaze. Show traces of
polychromy. Careful repairs, as usual. *Height 12 and 12½ inches*

[See illustration]

260

164. PAIR YELLOW GLAZED TERRA COTTA EQUESTRIAN STATUETTES *Sui*
Mounted soldier with domed war hat and a brace of pouches, astride an alert
horse; coated with slightly varying yellow and greenish yellow glazes and show-
ing traces of red pigment. Repaired. *Heights 15¼ and 14¾ inches*

[See illustration]

165. PAIR AUBERGINE AND BLUE GLAZED POTTERY EQUESTRIAN
STATUETTES OF MONGOLS

Ming

70- Official in aubergine and turquoise blue robe and sugar-loaf vermilion painted hat, erectly seated upon an unglazed white horse. Small repairs, as usual.

Heights 13½ and 14 inches

166. PAIR YELLOW GLAZED TERRA COTTA MORTUARY
STATUETTES OF WARRIORS

Sui

40- Erect armored figure wearing a hooded helmet, his right hand pressed against his chest; washed with an ivory yellow glaze exposing the buff paste at base.

Height 14 inches

167. FUKIEN PORCELAIN STATUETTE OF AN OFFICIAL

XVIII Century

150- Austere figure, seated upon a low throne, his hair tied with a trailing bowknot, his hands buried in the folds of his ample robe; coated with a vitreous milky white glaze. Has stand. (*Chinese Private Collector*)

Height 14¼ inches

168. PAIR BLUE AND WHITE TEMPLE JARS
WITH ORIGINAL COVERS

K'ang Hsi

120- High shoulder baluster vase and valanced hat cover, sketched with close all-over pattern of peony blossoms and scrolls in deep underglaze blue, the necks with petal and chevron collars. Minor imperfections. Have stands.

Height 16¾ inches

169. THREE POLYCHROMED TERRA COTTA MORTUARY STATUETTES

T'ang

135- Standing figure of monkish aspect, wearing curious helmet-shaped hat, long flowing robe with voluminous sleeves, and pointed shoes. Traces of orange polychrome. Minor imperfections. (*N. Y. Private Collector*)

Height 17 to 18 inches

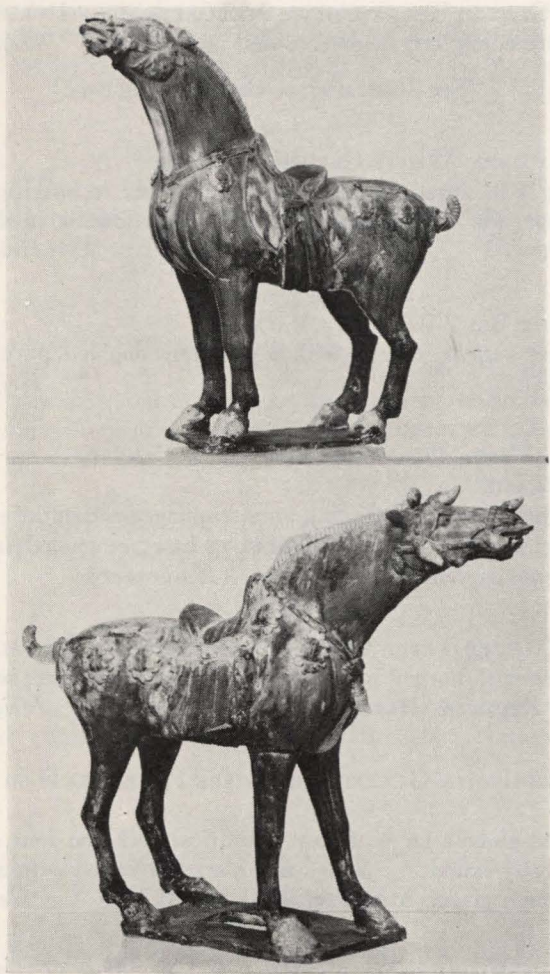
From Yamanaka & Co., Inc., New York, 1944

170. LUNG CH'ÜAN CRACKLED CELADON FLORAL PLAQUE

Early Ming

90- The cavetto incised with a floral scroll medallion bordered by a lotus trellis; coated with a vitreous sea green glaze with large crackle. Diameter 19 inches

- 140 171. PAIR FAMILLE VERTE BALUSTER-FORM TEMPLE JARS *K'ang Hsi*
 Five-color enamel decoration of numerous figures of ladies and gentlemen in
 summer pavilions and on the lakes and bridges of an ornamental park, with trees
 and rockery. Repaired at neck. *Height 14 inches*
 From F. Langweil, Paris
 Collection of Dr and Mrs Henry Barton Jacobs, Parke-Bernet Galleries, Inc,
 New York, 1940
- 80 172. PAIR FAMILLE ROSE BALUSTER-FORM TEMPLE JARS *Yung Chêng*
 Enameled with a *fêng huang* bird perched on rockery amid peony and camellia
 shrubs. *Height 14¼ inches*
 From F. Langweil, Paris
 Collection of Dr and Mrs Henry Barton Jacobs, Parke-Bernet Galleries, Inc,
 New York, 1940
- 35- 173. BLUE AND WHITE CLUB-SHAPED VASE *K'ang Hsi*
 Decorated in underglaze blue with a mandarin, his wife and attendants in a
 mountain pavilion; lappet and fret collars. *Height 17¾ inches*
- 65- 174. FAMILLE VERTE CLUB-SHAPED VASE *Late K'ang Hsi*
 Handsomely painted in five-color enamels and gilding, with a *fêng huang* bird
 perched on a pile of rocks amid peony shrubs and overhanging trees, amid a mul-
 titude of waterfowl, swallows and songbirds, with a cognate design upon the
 neck; floral diapered shoulder band with four reserves of *kylin* toying with balls.
Height 18¼ inches
- 53- 175. MIRROR BLACK THISTLE-FORM BEAKER *K'ang Hsi*
 Wide-mouthed bulbous vase on high expanding foot, the exterior coated with a
 brilliant jet black glaze showing white rims at foot and base. *Height 15 inches*
 Collection of Mrs Samuel T. Peters, Parke-Bernet Galleries, Inc, 1943
- 32 ⁵⁰ 176. BLUE AND WHITE POINT BOTTLE *K'ang Hsi*
 WITH FIGURAL DECORATION
 Tall-necked bottle decorated with two cusped cartouches depicting audience
 scenes, and scattered clusters of peonies and peaches. Minor age crack.
Height 16 inches
- 40- 177. CELADON FLORAL DISH *Ming*
 Valanced round dish incised under the grayish green glaze with a floral medal-
 lion and border. *Diameter 13 inches*



[NUMBERS 178 AND (ABOVE) 179]

300

178. GLAZED TERRA COTTA STATUETTE OF A HORSE OF
IMPORTANT SIZE

Vigorously modeled horse with head upraised as if chafing at the bit, coated with a nasturtium brown glaze, the trappings in green, brown and yellow splash glazes; hung with bluish green and yellow toad pendants. Some careful repairs, as usual.

*T'ang**Height 20½ inches*

[See illustration]

- 170- 179. SPLASH-GLAZED TERRA COTTA STATUETTE OF A HORSE *T'ang*
 Type of the preceding, but smaller. Small repairs. *Height 18¼ inches*

[See illustration on the preceding page]

- 70- 180. TWO BLUE AND WHITE CYLINDRICAL VASES *XVIII Century*
 One depicting a mounted dignitary giving audience to kneeling warriors in a rocky landscape, the other assorted utensils with flowers, in deep underglaze blue. [Lot.] *Height 17¼ inches*

- 40- 181. MAZARINE BLUE BALUSTER VASE *Ming*
 Broad-mouthed *potiche*, coated with a minutely dappled purplish blue glaze. Has wood cover. *Height 13½ inches*

- 85- 182. FAMILLE VERTE PORCELAIN PLAQUE IN CARVED
 TEAKWOOD FRAME *Ch'ing*
 Upright rectangular panel depicting an assemblage of dignitaries within a pavilion, a cluster of spears and umbrellas at base; enameled in *famille verte* colors. In prunus carved teakwood frame. (*Hasbrouck*) *14 x 9½ inches*

- 55- 183. CREAM GLAZED TERRA COTTA STATUETTE OF A LOKAPALA *Sui*
 Seated monster with horned grotesque head and hooved feet; washed in a thin yellow glaze. Repaired. Has stand. *Height 11¾ inches*

184. NANYANG BROWN-GLAZED STONEWARE FOUR-HANDLED JAR *Six Dynasties*

- 25- Broad-mouthed globose jar with low cylindrical neck and four rude suspension handles, the body exhibiting banded tool marks; invested with a finely crackled nasturtium brown glaze. Minor repairs. (*Semon*) *Height 8¾ inches*

- 35- 185. BLUE AND WHITE WRITER'S BOX AND TWO DEEP DISHES *Late Ming and K'ang Hsi*
 Compartmented box, decorated with a dragon and interlaced scrolls, has stand; and two dishes with jardiniere medallions, one with Ch'eng Hua mark. Small chips. [Lot.] *Length 7¾ to 9¾ inches*

- 35- 186. TURQUOISE BLUE AND BLACK STATUETTE OF A CAT *Ch'ing*
 Recumbent hollow-cast cat, with pierced eyes, ears and back; coated with a minutely crackled turquoise blue glaze sketched with black stripes. *Length 7½ inches*

- 70- 187. LANG YAO BALUSTER VASE K'ang Hsi
Truncated vase, invested with a rich oxblood glaze showing broad areas of dark coagulations. Has stand, and cover with jade finial. (*Hasbrouck*)
Height 9 inches
- 32-⁵⁰ 188. BLUE AND WHITE DRAGON BOWL Ming
Decorated with bands of dragons emerging from waves, and centring a corresponding roundel. (*Chinese Private Collector*) Diameter 6¾ inches
- 45- 189. THREE FAMILLE VERTE AND BLEU-VERTE
CABINET PORCELAINS K'ang Hsi and Yung Chêng
Teacup and saucer decorated with figures and *Fu* lions, respectively; and a pair of *bleu-verte* cups with birds and rockery. Minor age crack. [Lot.]
- 60- 190. BLANC DE CHINE PORCELAIN FIGURE OF A ROOSTER XVIII Century
Squatting bird with tall upswept hair; coated with a lustrous milky white glaze.
Height 8¼ inches
- 17-⁵⁰ 191. TING YAO BRUSH HOLDER Ming
Cylindrical *pi t'ung* with three valanced bracket feet, the exterior and interior rim coated with a faintly iridescent creamy white glaze. Minor age cracks.
Height 3¼ inches

CHINESE FURNITURE, PAINTINGS AND
DECORATIVE OBJECTS

- 35- 192. BURGAUTÉ LACQUER BOWL AND TWO PEKING GLASS BOTTLES Ch'ien Lung
Black lacquer bowl inlaid with mother-of-pearl peony vines and having silver-plated interior; and two bottles in garnet red and milk white glass, respectively, with four-character marks of the reign underfoot. [Lot.]
Heights 4 to 9½ inches
- 20- 193. BURGAUTÉ BLACK LACQUER WRITER'S BOX Ch'ien Lung
Oblong box with two stone ink slabs, and seven compartments having covers inlaid with mother-of-pearl floral motives. Length 10½ inches

20- 194. ALBUM OF BIRD PAINTINGS, WITH CARVED AND INLAID
BOXWOOD COVERS *Yung Chêng*
Comprising ten paintings on paper of ducks and songbirds in their habitats,
painted in soft colors; the boxwood covers richly carved with dragons above
waves, one inset with an archaistic inscribed ivory tablet. In case.
6 x 4½ inches

40- 195. PAIR PEKING SAPPHIRE BLUE GLASS BOTTLES *Ch'ien Lung*
Bulbous melon-form body and tall slightly flaring neck, ring foot; in heavy glass
of deep sapphire blue color. *Height 11¼ inches*

60- 196. CARVED CINNABAR LACQUER BOX AND PARCEL-GILDED
LACQUER STATUETTE *K'ang Hsi*
Three-section quatrefoil box with cover and stand, carved with figural and
peony cartouches; and a parcel-gilded statuette of Kwan Ti. Small repairs, and
imperfections. [Lot.] (*Hasbrouck*) *Heights 6 and 13 inches*

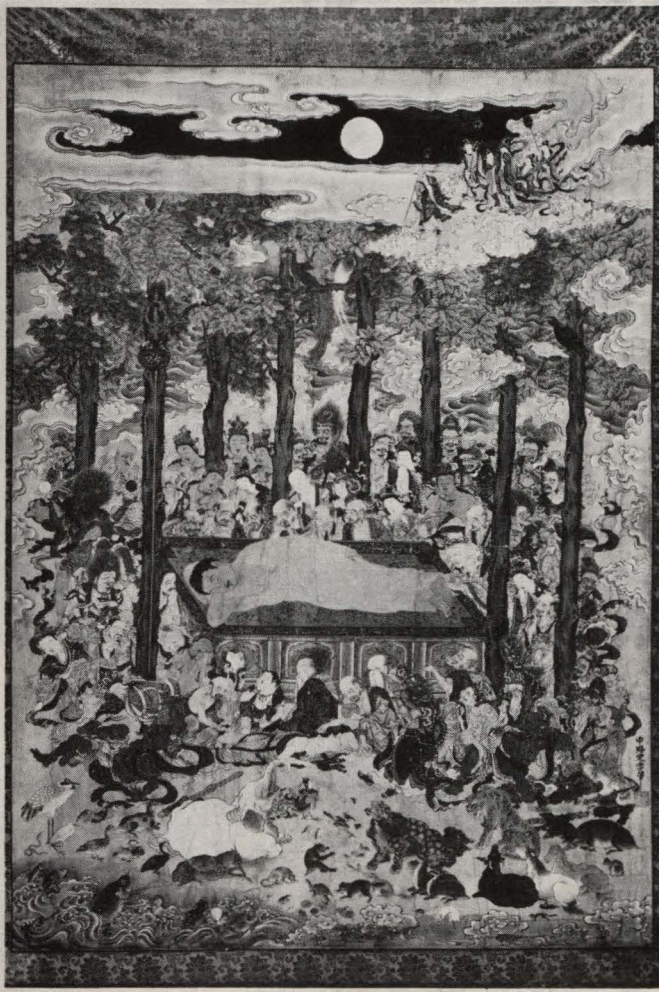
50- 197. PAIR CLOISONNÉ ENAMEL BOTTLES *Chia Ch'ing*
Six-lobed pear-shaped bottle inlaid with floral cartouches in pastel colors, on a
midnight blue ground. Minor imperfections. (*Hasbrouck*) *Height 13 inches*

25- 198. DECORATED RED LACQUER GIFT BOX *Late Ming or K'ang Hsi*
Oblong box, the high cover painted with symmetrical scroll and floral motives
in vermilion and sepia, heightened with gilding. *Length 26½ inches*

53- 199. FAMILLE NOIRE 'HAWTHORN' BALUSTER VASE
MOUNTED AS LAMP *K'ang Hsi*
Truncated vase, decorated with green rockery, and aubergine and white prunus
branches with perched birds, reserved in a black ground. Fitted for electricity,
with shade. *Height 22 inches*
From Warren E. Cox, New York

15- 200. CHINESE PAINTING ON SILK *XVIII Century*
Full-length seated figure of a court lady in colorful embroidered sash and long
robe. *39 x 20 inches*

17- 200A. CHINESE PAINTING ON PAPER *Ch'ien Lung*
Upright landscape, painted in soft colors with a sage and peasants conversing
under a magnolia tree. Framed. *37½ x 16 inches*



170

201. TIBETAN BUDDHISTIC TEMPLE PAINTING ON SILK XVIII Century
 The Nirvana of Buddha. Gilded robed figure of Buddha in *parinirvani*, surrounded by numerous mourning figures of arhats, sages, bodhisattvas and other members of the Buddhist pantheon, in the foreground beasts and birds with the baby white elephant, vehicle of the Buddha's birth. Framed.

6 feet 2 inches x 48 inches

Exhibited at the Museum of Fine Arts, Boston



[NUMBER 202]

202. PAIR FINELY CARVED CINNABAR LACQUER
LANDSCAPE PANELS

Ch'ien Lung

140- Arched upright panels, finely carved to depict lakeshore scenes; one with deities sailing in a cloud above sages and deer on a high terrace, and one with immortals reading a scroll beneath tall pine trees with figures and flying cranes overhead; conforming molded frame, carved with lotus and fret scrolls. (*Hasbrouck*)

40½ x 26½ inches

Exhibited at the Museum of Fine Arts, Boston

[See illustration of one]



[NUMBERS 203 AND 204]

140-
203. SET OF FOUR CHINESE POWDERED BLACK LACQUER SIDE CHAIRS
WITH PIETRA DURA ORNAMENT *Ming or Early Ch'ing*
Serpentine open back of three interlinked scrolls centring a pendent 'gong'
splat; oblong caned seat, on fret-pierced rails and quadrangular legs having
box stretcher. In black lacquer powdered with buff inclusions, the splat inlaid
in mother-of-pearl and tinted bone with varying vignettes of birds and flowers.
Small imperfections.

[See illustration of two]

140-
204. SET OF FOUR CHINESE POWDERED BLACK LACQUER SIDE CHAIRS
WITH PIETRA DURA ORNAMENT *Ming or Early Ch'ing*
En suite with the preceding. Small imperfections.

50-
205. CARVED WALNUT LOW CABINET *XVIII Century*
Oblong paneled top, the front with five shallow frieze drawers over two cup-
board doors and a valanced apron carved with gourd vines; short quadrangular
legs. *Height 19½ inches; length 5 feet 2 inches*

- 80- 207. CHINESE PAINTING ON PAPER XVIII Century
 Depicting at three-quarter length a richly garbed lady holding a *ju-i* sceptre and standing beside a table. Castiglione school. Framed. 29½ x 17½ inches
 From Parish-Watson & Co., Inc., New York
- 17-50 207A. TIBETAN LAMAISTIC TEMPLE PAINTING XVII-XVIII Century
 Depicting Usnisavijaya, with three heads, bared breast, and eight arms holding attributes, and seated in *dhyanasana* over three minor female bodhisattvas. Framed. (N. Y. Private Collector) 24 x 17¾ inches
- 200- 208. SET OF FOUR CHINESE PARCEL-GILDED TURQUOISE BLUE LACQUER Chia Ch'ing
 ARMCHAIRS
 Curvilinear open back, the rectangular spooned splat with gilded panel centring a carved white jade plaquette; outscrolled open arms, oblong seat; on quadrangular bracketed supports with box stretcher. Incised with fret and floral scrolls, fruits and dragons. Re-lacquered robin's-egg blue at later date. Have brown satin loose seat cushions.
- 130- 209. SET OF FOUR CHINESE CARVED CINNABAR LACQUER THRONE CHAIRS Ch'ien Lung
 Open back with scrolled crest rail and outcurved arms, vasiform splat; circular seat with valanced rails, on bracketed quadrangular legs with scroll feet. The whole carved with floral sprigs and phoenixes. One painted white, the legs somewhat reduced. Together with an octagonal tabouret. [Lot.]
- 230- 210. WALNUT VITRINE CABINET IN THE CHINESE TASTE
 Glazed vitrine with three front doors and terraced top; the molded base with fret brackets and quadrangular legs. Fitted for electricity. (Semon)
Height 6 feet 9 inches; width 5 feet
- 100- 211. CHINESE CARVED COROMANDEL LACQUER SIX-FOLD SCREEN Ch'ing
 Depicting a family of *Fu* lions with seven cubs disporting beneath a bamboo tree, an inscription in upper left corner; in black and deep green with touches of crimson, on a cream ground; diapered border of *shou* and floral cartouches. Minor imperfections. Height 6 feet 10 inches; length 10 feet 9 inches
- 40- 212. CHINESE RUG Tao Kuang
 Woven in dark blue and oyster white with an opposed landscape with deer and cranes, symbolic of Longevity. (Semon) 3 feet 10 inches x 1 foot 11 inches
- 30- 213. TWO CHINESE RUGS Tao Kuang
 One with buff field and deer motives, and one with lapis blue field and floral motives centring a deer roundel. (Semon)
4 feet 3 inches x 2 feet 3 inches and 2 feet 5 inches

[END OF FIRST SESSION]

\$14,025=

SECOND AND LAST SESSION

Wednesday, March 24, 1948, at 2 p. m.

CATALOGUE NUMBERS 214 TO 427 INCLUSIVE

CHINESE JADE AND OTHER SEMI-PRECIOUS MINERAL CARVINGS

214. CARVED BLACK AND GREEN TOMB JADE

FIGURINE OF A FU LION

Sung

45- Coiled *Fu* lion, carved from a rounded pebble; in dense brownish black jade, dappled with celadon. Has stand. (*Pierce*) *Length 2 7/8 inches*

215.* CARVED FEI-TS'UI JADE ROUGE BOX

20- Squat globular box carved with leaf lappets and fret scrolls, the cover centring a *shou* medallion. Has stand. *Diameter 2 3/4 inches*

216.* FEI-TS'UI JADE BRACELET AND PAIR EARRINGS

25- Ring type bracelet; and a pair of tablet-shaped earrings delicately pierced, and carved with birds, animals and plants; in bright green *fei-ts'ui* jade. [Lot.]

217.* CARVED TOMB JADE FU-LION STATUETTE

15- Recumbent *Fu* lion nibbling *ling chih*, in greenish gray and black jade; has stand. Together with a 'soft' brown jade pyramidal seal. [Lot.] *Length 3 inches*

218. THREE CARVED TOMB JADE CABINET ARTICLES

Pre-Sung

15- Dentate brown and white jade tablet carved with a sage and inscription; green and brown jade knot opener; and a calcined pale green jade buckle carved with *t'ao t'ieh* mask and grain motives. [Lot.] (*Pierce*)

219.* CARVED WHITE JADE ANIMAL STATUETTE AND BUCKLE

Ming and Ch'ien Lung

10- Recumbent *Fu* lion cub with head sharply turned; and a buckle carved and undercut with a hydra, having *Fu*-lion head terminal. Have stands. [Lot.]

Lengths 2 1/2 and 4 1/2 inches

220.* INDIAN WHITE JADE ROUGE BOX INSET

WITH TOURMALINE AND GOLD

XVIII Century

150- Quatrefoil white jade compartmented box with flat cover and four tiny leaf-carved supports; set with lavender and green tourmaline blossoms cupped in gold. *3 1/4 inches square*

From Yamanaka & Co., Inc., New York

- 20- 221. *THREE CARVED WHITE JADE CABINET ARTICLES *XVIII Century*
 Square table screen carved with an Immortal and blossoms, has stand; deer-shaped buckle; and a beaker vase with hydra and phoenix. [Lot.]
Heights 2 to 4 inches
- 20- 222. *TWO CARVED LAPIS LAZULI AND CORAL CABINET ARTICLES
 Lapis lazuli statuette of Buddha on lotus throne, has stand; and a coral mermaid with helmet. Together with two tiny carved pink shell figural groups. [Lot.]
- 20- 223. CARVED MOSS JADE SMALL BRONZE-FORM BOWL *Ming*
Kuei-shaped bowl with two monster-head handles, carved with rice grains. Has stand. (*Semon*) *Length 3½ inches*
- 30- 224. CARVED GOLDSTONE HOUSEBOAT
 A junk manned by three figures, a chow perched atop the open cabin. Has wave-carved stand. (*L. I. Private Collector*) *Length 5½ inches*
- 10- 225. *CARVED GRAY JADE AND TEAKWOOD TABLE SCREEN *Ming (?)*
 Irregular disc-form gray jade pebble carved on both sides in low relief with figures and pines in rocky grottoes. Has carved teakwood stand.
Length 4½ inches
- 40- 226. *CARVED WHITE JADE BIRD GROUP *K'ang Hsi*
 Depicting a mound of porous rockery with two perched cocks, one concealed in a tiny grotto, and with a chrysanthemum shrub at left; in translucent white jade with brown markings. Has stand.
Length 5 inches
- 40- 227. *WHITE JADE BOWL
 Graceful ogival bowl with ring foot, in flocculent oyster white jade. Has stand.
Diameter 4¾ inches
- 20- 228. *CARVED LAPIS LAZULI GROUP *Ming (?)*
 Depicting a crested bird nibbling a peach spray, with a hare beside him; rockery base. Grayish mineral with blue and iron pyrite veinings. Has stand.
Length 5½ inches
- 30- 229. *CARVED MOSS JADE PI *Han*
 Flat disc with central aperture, carved in low relief on both sides with whorled 'rice' grains; in waxy green jade flecked with brown. Has stand.
Diameter 6 inches
- 45- 230. *CARVED LAPIS LAZULI VASE GROUP *Ming*
 Vase in the form of a hollow tree stump, partially enveloped by straggling pine branches with perched birds; in attractively variegated lapis lazuli. Has stand.
Height 5¾ inches



TOP ROW: NUMBERS 232-233-231

AT CENTRE: NUMBER 234

BELOW: NUMBER 235

25-

231. *CARVED FEI-TS'UI JADE LIBATION CUP WITH COVER *Ch'ien Lung*
 Helmet-form cup with dragon scroll handle and molded cover carved with a
 monster mask and hydra finial, the body with playful hydra and a loose ring
 below the spout; in *fei ts'ui* jade with deep green and pale yellow mottlings.
 Has stand. *Height 5 inches*

[See illustration]

160- 232. *CARVED WHITE JADE TRIPOD KORO *Ch'ien Lung*
Squat round *koro* with two *t'ao t'ieh* head volute handles and odd petal-carved dome cover having pierced cruciform finial with four loose rings, on three animalistic feet; delicately carved with dragon scrolls on a fret ground, in pale greenish white jade. Has stand. *Length 6 inches*

[See illustration]

140- 233. *CARVED WHITE JADE BRONZE-FORM VASE WITH LOOSE RING HANDLES *Yung Chêng*
Quadrangular pear-shaped vase with two elephant-head loose-ring handles and dome cover with undercut hydra finial; carved in low relief with a cluster of plantain leaves springing from rockery; in pale greenish white jade of soft waxy lustre. Has stand. *Height 8¼ inches*

[See illustration]

80- 234. *PAIR CARVED MUTTON-FAT JADE AND TEAKWOOD TABLE SCREENS *T'ao Kuang*
Upright rectangular tablets, carved with the Three Star Gods and a pine tree in a rocky gully, the reverse with pairs of deer and geese in similar settings. Have carved teakwood and boxwood table stands. *Total height 10 inches*

[See illustration]

40- 235. *CARVED WHITE JADE AND TEAKWOOD JU-I SCEPTRE *Ch'ien Lung*
Scrolled teakwood sceptre applied with three cartouche-shaped plaques carved in low relief with groups of figures boating beneath pine trees. *Length 21½ inches*

[See illustration]

35- 236. *CARVED WHITE JADE AND TEAKWOOD JU-I SCEPTRE *Ch'ien Lung*
Type of the preceding, but with minor variations. *Length 21 inches*

35- 237. CARVED MUTTON-FAT JADE HYDRA COUPE *Ming*
Spouted oval coupe, the walls and underside carved and undercut with eight sinuous hydra; in waxy green and tobacco brown jade. (*Hasbrouck*) *Length 6½ inches*

40- 238. *CARVED MUTTON-FAT RETICULATED JADE DRAGON ORNAMENT *K'ang Hsi*
Intricately carved and pierced to depict a horned dragon, ensconced in cloud scrolls, and standing upon rockery and dashing waves; hollow interior and pierced base. *Height 6¼ inches*

Illustration of numbers 232 to 235 inclusive appears on the preceding page

239. CARVED TOMB JADE HEXAGONAL VASE

Early Ming

225- Bronze-form vase, carved and undercut with two hydra-mask handles, lateral scrolls, and flanges; incised with *t'ao t'ieh* masks, *shou* characters, and lotus blossoms below a fretted leaf collar; in grayish green jade, tintured with brown. (Pierce)

Height 8 $\frac{1}{8}$ inches

240. *CARVED MUTTON-FAT JADE PEACH-FORM BOWL

225- Oval heart-shaped bowl carved with a series of rosettes and borders of quatrefoils upon the exterior; projecting from one side is a reticulated shaped flange handle.

Length 6 $\frac{1}{4}$ inches

Collection of Yamanaka & Co., Inc., Parke-Bernet Galleries, Inc, 1944

241. *CARVED WHITE JADE CABINET VASE AND DISH

Ch'ien Lung

50- Almond-shaped vase delicately carved with a *t'ao t'ieh* band, and a quatrefoil dish; in white jade of high polish. Small repair. Have stands. [Lot.]

242. *FEI-TS'UI JADE NECKLACE

30- String of fifty-one graduated and matched beads in marbled emerald green and white jade. In case.

Length 8 inches

243. *CARVED MUTTON-FAT JADE HEXAGONAL BEAKER

Ch'ien Lung

80- Knopped bronze-form beaker, carved with notched vertical flanges at the angles, bordering *t'ao t'ieh* masks and plantain leaves; in mutton-fat jade of soft lustre.

Height 6 $\frac{1}{2}$ inches

From Long Sang Ti, New York

244. *CARVED TOMB JADE TEMPLE BELL

Han

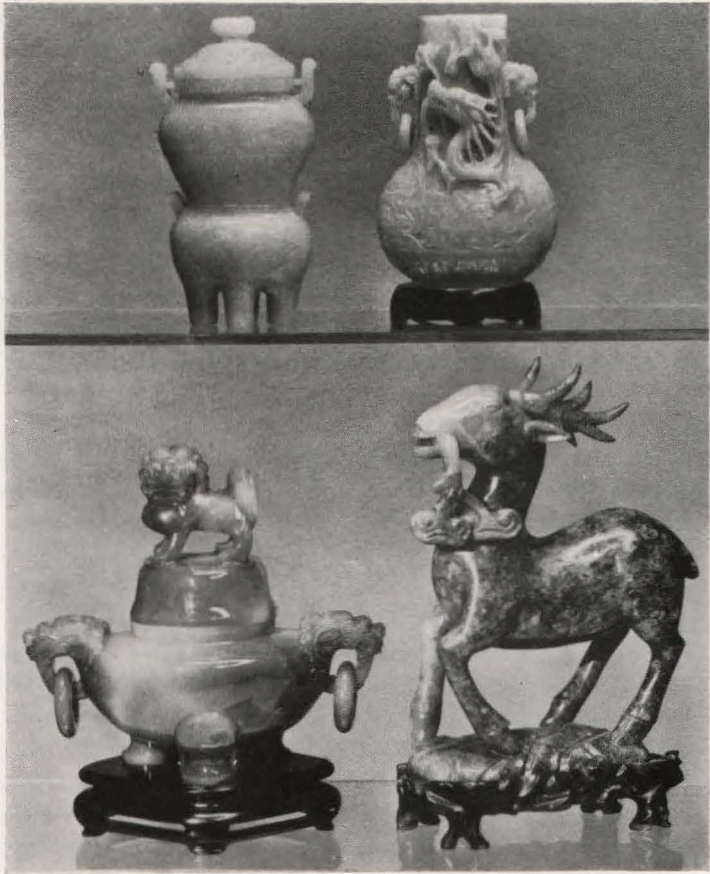
30- Fan-shaped bell with pointed cylindrical finial, pierced for suspension; carved with twin 'rice-grain' panels in *fei-ts'ui* jade with brown patina. In carved teak-wood frame.

Height 7 $\frac{1}{2}$ inches

245. *TWO CARVED MUTTON-FAT JADE TRAYS

20- Elongated quatrefoil tray, and one carved as joined nelumbian leaves; in translucent greenish white jade. Have stands. [Lot.]

Lengths 8 $\frac{1}{2}$ and 5 $\frac{3}{4}$ inches



AT TOP: NUMBERS 247 AND 246

BELOW: NUMBERS 248 AND 249

- 1 20- 246. *CARVED FEI-TS'UI JADE DRAGON BOTTLE WITH LOOSE-RING HANDLES
Ch'ien Lung
Of oval section, the tall neck carved with two *Fu*-lion-head loose-ring handles and undercut with sinuous four-clawed dragons above a band of *t'ao t'ieh* masks; in lustrous jade with emerald green venation. Minor imperfections. Has stand.
Height 6 $\frac{3}{4}$ inches

[See illustration]

247. CARVED WHITE JADE DOUBLE KORO

Ch'ien Lung

150- Pear-shaped two-handled vase with pierced cover, on bulbous base with two handles and four cylindrical feet; carved in low relief with dragon and *t'ao t'ieh* motives. (*Chinese Private Collector*)

Height 7½ inches

[See illustration]

248. CARVED MAUVE AGATE TRIPOD KORO WITH LOOSE-RING HANDLES

Ch'ien Lung

150- Squat bowl with three incurvate feet and two *Fu*-lion-head loose-ring handles, the high dome cover with a skilfully carved standing *Fu* lion as a finial; in vitreous smoky mauve agate softly fluctuating to gray. Has stand. In case. (*Chinese Private Collector*)

Length 8½ inches

[See illustration]

249. CARVED SPINACH JADE STATUETTE OF A DEER

Tao Kuang

190- Skilfully carved standing figure of the deer of Longevity with five-tined antlers, nibbling a spray of *ling chih*; on oblong rockery base; lightly incised with tiny stars; in handsomely textured spinach green jade with areas of white albite. Has stand. (*Chinese Private Collector*)

Height 10 inches

[See illustration]

250. CARVED ROCK CRYSTAL BEAKER WITH LOOSE-RING HANDLES

K'ang Hsi

100- Incurvate beaker of quatrefoil section, carved with *chih lung* loose-ring handles, the knob undercut with hydra, and enclosed by pointed leaf lappets. (*Semon*)

Height 9½ inches

251. PAIR CARVED SPINACH JADE ANIMAL STATUETTES

180- Slender rearing elephant, with long tusks and upraised searching trunk; carved in spinach green jade with bold white marblings. Have stands. (*Chinese Private Collector*)

Length 12 inches

252. PAIR FINELY CARVED MOSS JADE BIRD STATUETTES

400- Graceful standing phoenix with turned head, crested wing feathers, the luxuriant tail parting and curling to enclose the rockery base; in beautifully matched moss green jade suffused with minute black 'moss'. Have stands. In case. (*Chinese Private Collector*)

Height 13 inches

Illustration of numbers 247 to 249 inclusive appears on the preceding page

253. *CHINESE CARVED MUTTON-FAT JADE BRONZE-FORM VASE WITH SEMI-PRECIOUS MINERAL PLANT

50-
Quadrangular vase, with two elephant-head handles, carved with stylized animal heads, between plantain-leaf borders; supporting a flowering shrub in moss jade, carnelian, etc. Has stand. Height 16½ inches

254. ARCHAISTIC 'SOFT' BROWN TOMB JADE PI WITH TEAKWOOD STAND

60-
Exceptionally large and heavy disc, the obverse incised with an inscription; in mottled horn brown 'soft' jade. Has scroll-carved teakwood table stand. (N. Y. Private Collector) Total height 24¾ inches

255. CARVED RHINOCEROS HORN

35-
Carved as an inverted flower on undercut leafy stem, the rim with two stalking hydra; minor imperfections. Together with a carved wood tea caddy. [Lot.] (Hasbrouck) Height 11 inches

256. 'SOFT' JADE TEAPOT

25-
Globular vessel with sturdy loop handle and spout, dome cover; in luminous celadon green 'soft' jade. (Chinese Private Collector) Length 8 inches

257. CARVED 'SOFT' JADE TRIPOD KORO WITH LOOSE-RING HANDLES

35-
Squat round tripod *koro* with monster-mask loose-ring handles and tall incurvate cover with undercut *Fu*-lion finial and three *ling chih* handles; in waxy celadon green material. Has stand. (Chinese Private Collector) Height 5 inches

258. *CARVED YELLOW JADE VASE GROUP

30-
Two-handled bronze-form vase with cover, flanked by a smiling boy and climbing hydra; in waxy greenish yellow jade. Has stand. Height 4¾ inches

259. TWELVE CHINESE MILK WHITE GLASS BUCKLES AND THUMB RINGS

10-
Eight tabular buckles, each with two 'buttons'; and four archers' thumb rings. [Lot.] Lengths 1⅛ to 2½ inches

260. TWO CHINESE INLAID BRONZE ROUGE BOXES, AND TWO SNUFF BOTTLES

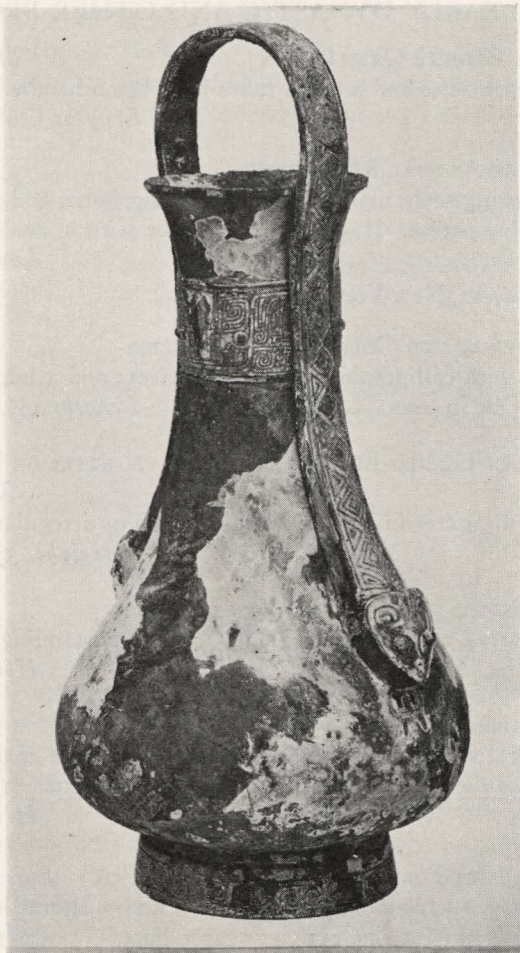
70-
Rouge boxes with black and brown grounds inlaid with figures; silver-plated damascened snuff bottle; and a mother-of-pearl snuff bottle. [Lot.] (Hasbrouck) XVIII Century

261. FOUR CHINESE DECORATIVE BRASS CABINET ARTICLES

Passer
Peach-form *koro*, leaf-shaped dish, tripod *koro*, and an engraved pipe with accessories. One has stand. [Lot.] (Hasbrouck)

CHINESE EARLY DYNASTIC AND OTHER BRONZES

- 35- 262. TWO SMALL BRONZE ORNAMENTS *Shang and Chou*
 Shang pierced serpent disc and a Chou ram's-head baton handle. Green patina.
 In cases. [Lot.] *Lengths 1½ and 3½ inches*
- 210- 263. RARE BRONZE ANIMAL STATUETTE *Chou*
 Depicting a crouching scaly monster with branching horns and gaping mouth;
 rich green and blue patina. Has stand. Together with a small Ch'in bronze
 mirror. [Lot.] (*Semon*) *Length 3¾ inches*
 From C. T. Loo & Co., New York
- 25- 264. BRONZE MIRROR AND GOLD-INLAID BUCKLE *Han*
 Mirror wrought with calligraphic figures, imperfect; and a buckle with silver
 and gold inlays. One in case. [Lot.] *Lengths 4½ and 5¼ inches*
- 20- 265. PAIR TIBETAN GILDED BRONZE FINIAL STATUETTES OF BODHISATTVAS
XVIII Century
 Squatting 'jeweled' figures in slightly varying poses, on irregular scroll-molded
 bases; signed. *Heights 3½ and 4 inches*
- 70- 266. GILDED BRONZE STATUETTE OF A BODHISATTVA *T'ang*
 'Jeweled' Bodhisattva with pierced nimbus, imperfect, standing on lotus base.
 Has stand. *Height 5¼ inches*
- 25- 267. BRONZE TRIPOD CAULDRON (TING) *Shang (?)*
 Small bowl with two erect horseshoe handles and triple mammiform base,
 chiseled with a *t'ao t'ieh* collar; dark brown and green patina. (*Chinese Private*
Collector) *Height 6¼ inches*
- 30- 268. BRONZE HELMET-FORM LIBATION CUP (CHÜEH) *Late Chou or Ch'in*
 With pointed lip, deep spout, two lug handles, and a lateral loop handle, on
 flaring tripod; chiseled with a half circlet of fret diapers. Green patina.
Height 8 inches
- 25- 269. INLAID BRONZE ANIMAL STATUETTE *Sung*
 Engagingly modeled bovine figure with raised head, a small hinged cover upon
 the back; inlaid with contrasting metal scrolls. Has stand. (*Chinese Private*
Collector) *Length 8½ inches*
- 20- 269A. BRONZE TRIPOD BOWL (TING) *Late Chou*
 Round swelling bowl having rim with vertical lugs, and edged with an incised
 border of fret scrollings, on three cylindrical supports. Rich malachite green
 incrustations. *Height 8½ inches*



225- 270. RARE BRONZE CEREMONIAL WINE VESSEL (YU)

Shang

Exquisite pear-shaped vessel with tall incurvate neck of oval section, and serpentine bail handle having serpent-head terminals, on high ring foot; wrought with a collar of fret scrolls and molded 'tao t'ieh' masks, the handle incised with a lozenge chain, the foot with fret scrolls; at base of handle appear a cartouche and four incised human feet; rich malachite green, and red patina. Minor repair to handle. From An-yang. In case. (*Chinese Private Collector*)

Height 13¼ inches

[See illustration]



[NUMBER 271]

[NUMBER 272]

Wittichan

271. IMPORTANT BRONZE CEREMONIAL LIBATION VESSEL (KUANG) *Shang*
 Body of oblong section, flaring foot, and helmet-shaped spout wrought with projecting and barbed vertical flanges, the sturdy loop handle crested with an exquisitely chiseled *t'ao t'ieh* mask with upstanding curled horns; wrought in low relief with dragon scrolls in panels of incised frets, an inscription incised at base. In silver gray bronze partially concealed by green and red patina. From An-yang. Has stand. (*Chinese Private Collector*) *Length 9¾ inches*

[See illustration]

170-

272. BRONZE TALL TRIPOD CAULDRON (TING) *Shang*
 Deep bulbous bowl with flaring rim surmounted by two umbrella-shaped lug handles, on three splayed sabre legs; wrought with a collar of rosette bosses and incised fret scrolls, and coated with a rich green and red patina. From An-yang. Has stand. (*Chinese Private Collector*) *Height 11¾ inches*

[See illustration]



[NUMBER 273]

270-

273. GILDED BRONZE STATUETTE OF KUAN YIN ON LOTUS STAND *T'ang*
Swaying figure of the goddess in long gown and trailing draperies, a small vase
in her left hand; on lotus podium and corresponding oblong plinth with four
bracket feet. (*Semon*) *Total height 14½ inches*
Collection of Prince Tuan Fang

[See illustration]

274. BRONZE TRIPOD CAULDRON (TING) *Chou*

40- Deep round bowl with flanged rim and two horseshoe handles, on three slender cylindrical legs; incised and molded with a collar of *t'ao t'ieh* masks and fret scrolls interrupted by vertical flanges; rich green patina. *Height 9 inches*

275. BRONZE TRIPOD CAULDRON (TING) *Chou*

40- Type of the preceding, with collar of rosetted bosses and fret scrolls. Rich variegated patina. *Height 9 inches*

276. BRONZE TWO-HANDLED SHALLOW BOWL (P'AN) *Chou*

100- Shallow round footed bowl with two vertical strap handles and three animalistic paw feet; incised with bands of fretwork scrolls, the interior with an inscription. Dark green patina. Has stand. (*N. Y. Private Collector*) *Length 16½ inches*
Collection of Yamanaka & Co., Inc., Parke-Bernet Galleries, Inc, 1944

277. POLYCHROMED AND GILDED BRONZE STATUETTE OF KUAN YIN *Sung*

90- Erect slender figure in richly 'jeweled' long robes and scrolled diadem centring an Amida Buddha, her right hand making a *mudra*, her left grasping a vase; painted red, with traces of gilding. Has stand. *Height 20 inches*

278. INLAID BRONZE STATUETTE OF KUAN YIN *Late Ming or K'ang Hsi*

110- Graceful swaying figure in voluminous robes and hood inlaid with borders of cloud scrolls in contrasting metal, her hands making a *mudra*; on cloud-molded base. Dark brown patina. (*Hasbrouck*) *Height 24 inches*
Exhibited at the Museum of Fine Arts, Boston

279. GILDED BRONZE TEMPLE GONG *K'ang Hsi*

110- Of barrel form, with addorsed dragon finial; molded in high relief with panels of bosses, the Eight Mystic Trigrams and inscriptions, including the date mark. (*Hasbrouck*) *Height 12¼ inches*
Exhibited at the Museum of Fine Arts, Boston

280. TIBETAN GILDED BRONZE STATUETTE OF BUDDHA *XVIII Century*

25- Depicting the seated Buddha in meditative pose, on triangular lotus-molded base. *Height 6¾ inches*

281. GILDED BRONZE KORO AND TWO STATUETTES *XVII-XVIII Century*

50- Quadrangular two-handled *koro* with peony-pierced cover; and two seated figures of a *lohan* and Confucius, in bronze and gilded bronze, respectively. [*Lot.*] (*Hasbrouck*) *Height 5 to 7 inches*

CHINESE AND OTHER WOOD AND STONE SCULPTURES



[NUMBER 282]

450- 282. SCULPTURED RED SANDSTONE HEAD OF BUDDHA

Superbly carved youthful head with an expression of deep serenity, the close-cropped hair surmounted by a domical *ushisha*; in fine-grained red sandstone with traces of buff pigment. Mounted on walnut stand. *Wei*
Height 8¼ inches
From Parish-Watson & Co., Inc., New York

[See illustration]



[NUMBER 283]

175-
283. SCULPTURED OLIVE GREEN MARBLE HEAD OF A BODHISATTVA *T'ang*
Plump oval face with a benign expression, and surmounted by a tassled and
draped 'jeweled' headdress enlivened with an Amida Buddha; the long ears set
with small rosettes, in olive green marble of soft finish. On velvet plinth. From
Singnan-fu. (*Semon*) *Height 12 inches*

Collection of Marzell von Nemes, Munich

Described and Illustrated in *Z. V. Tavacs, Ostasiatische Zeitschrift*, vol. II, pp.
87-89

[See illustration]

175- 284. CAMBODIAN (KHMER) SCULPTURED RED SANDSTONE PORTRAIT
BUST OF BUDDHA XII Century

Serene head with close-cropped hair surmounted by a tall *usnisha* fronted by an Amida Buddha, the elongated ear lobes with knopped terminals. In fine-grained red sandstone with white incrustation. Has stand. (N. Y. Private Collector)
Height 18¼ inches

60- 285. SCULPTURED BLACK MARBLE FU-LION STATUETTE Wei

Snarling lion, crouching upon its forelegs; oblong base. (Semon)
Length 4 inches

From Mathias Komor, New York

350- 286. BURMESE SCULPTURED, LACQUER AND PARCEL-GILDED STATUE
OF THE BUDDHA XVI-XVII Century

Erect slender figure, the smiling head inclined slightly forward; in plaited robes exposing the left shoulder, the hands grasping the flaring mantle; on lotiform socle. Painted black, with touches of gilding. Lacks *usnisha*.

Total height 6 feet

220- 287. PAIR SCULPTURED WOOD AND LACQUER FU-LION CUBS Early Ming

Snarling figure in sprawling, playful pose; with traces of polychromed lacquer. Some repairs and imperfections.
Length 24 inches

80- 288. TWO CARVED WOOD STATUETTES OF KUAN YIN Late Ming or Ch'ing

Seated crowned figures upon bases of rockery, one with right knee raised, the other holding a cluster of lotus blossoms.
Height 15 and 15½ inches

80- 289. CARVED WOOD STATUETTE OF KUAN YIN Late Ming or Ch'ing

Graceful figure, seated with the right knee raised, upon irregular rock, the right hand raised in a benevolent gesture; with crown and high voluted coiffure.

Height 20 inches

55- 290. CARVED, GILDED AND POLYCHROMED CLAY FIGURE OF AN OFFICIAL
XVIII Century

Seated bearded figure wearing old rose and gold robes with dark bluish green borders, the hands thrust into the wide loose sleeves. Has stand.

Height 20½ inches

CHINESE POTTERY AND PORCELAIN

25- 291. SIX BLUE AND WHITE PORCELAIN SNUFF BOTTLES *Ch'ing*
 Varying flasks and bottles, painted with figures, dragons and landscapes. One repaired. [Lot.] (*Hasbrouck*)

40- 292. EIGHT BLUE AND WHITE SNUFF BOTTLES *K'ang Hsi to Ch'ien Lung*
 Interesting assortment, mainly decorated with figural subjects, including the Boys' Festival.

120- 293. PAIR FINE BLEU-VERTE SEMI-EGGSHELL PORCELAIN TEACUPS *K'ang Hsi*
 Delicately potted bell-shaped cup, decorated with flowering prunus shrubs and tiny butterflies in green and overglaze blue, heightened with yellow and aubergine. Have stands.
Height 2½ inches

60- 294. KO YAO OCTAGONAL COUPE *Sung*
 Incurvate octagonal coupe, coated with a brownish gray glaze with dark medium crackle. Minor repair. (*Semon*)
Length 3¼ inches
 From Mathias Komor, New York

80- 295. FUKIEN PORCELAIN STATUETTE OF HOTEI *Ming*
 Squatting figure with smiling contenance, his loose robes exposing a bare torso; in brilliant milky white glaze. Has stand. (*Chinese Private Collector*)
Height 4 inches

30- 296. KUANGTUNG CHÜN YAO SMALL JAR *Ming*
 Onion-form jar with medium aperture, molded with six vertical flanges reserved in the ruddy brown paste; the upper portion coated with a milky blue glaze with sepia panels and striations. (*Semon*)
Height 3 inches
 From Parish-Watson & Co., Inc., New York

50- 297. THREE-COLOR PORCELAIN LIBATION COUPE *K'ang Hsi*
 Oval coupe with projecting rim and angular strap handle; molded with yellow and aubergine hydra, and painted with *t'ao t'ieh* masks and blossoms, on a green ground. Minor imperfections. Has stand. (*N. Y. Private Collector*)
Length 4 inches

130- 298. PAIR PAI TING YAO SMALL DISHES *Sung*
 Deep round dish, the cavetto exquisitely incised with a floral spray beneath the unctuous creamy white glaze. Have stands. In case. *Diameter 4½ inches*

20- 299. PAIR HONAN CHIEN YAO SPOTTED CONIFORM BOWLS *Sung*
 The exterior coated with a dark brown and yellow tortoise-shell glaze, the interior with a lighter *soufflé* glaze reserved with three brown leaf cartouches. One repaired. *Diameter 4 $\frac{1}{4}$ inches*

40- 300. CORAL RED FRUIT ORNAMENT AND PAIR COUPES *Ch'ien Lung*
 Large pumpkin, painted with turquoise green leaf scrolls, and a pair of leaf-shaped coupes molded with branching stem. Have stands. Minor imperfection. [Lot.] *Lengths 3 and 4 $\frac{1}{2}$ inches*

45- 301. THREE GREEN AND YELLOW RICE BOWLS *Tao Kuang*
 Ogival bowls, incised with five-clawed dragons amid flames, enclosed by vine and *ju-i*-lappet borders, the interior with inscription, on a rich Imperial yellow ground. Seal mark of the reign underfoot. *Diameter 4 inches*

[See illustration of two]

120- 302. PAIR IMPERIAL YELLOW DRAGON DISHES WITH INCISED DECORATION *Ch'ien Lung*
 Deep ogival dish, the centre lightly incised with a dragon roundel, the exterior with dragons pursuing the jewel amid flames; coated with an iridescent Imperial yellow glaze. In case. (*Chinese Private Collector*) *Diameter 6 $\frac{3}{4}$ inches*

[See illustration]

70- 303. PAIR IMPERIAL YELLOW DISHES WITH INCISED DECORATION *Yung Chêng*
 Deep dish with well-potted ring foot; delicately incised with a phoenix and dragon roundel centring a *shou* character, the exterior with symbols of the *pa chi-hsiang*. Six character mark of the reign underfoot. In case. (*Chinese Private Collector*) *Diameter 5 $\frac{1}{2}$ inches*

[See illustration]

70- 304. THREE-COLOR FIGURAL COUPE AND PAIR BIRD STATUETTES *K'ang Hsi and Ch'ien Lung*
 Coupe in the form of the drunken poet Li Po, leaning against a jar; and a pair of parrots in alert pose; in lemon yellow and green glazes with highlights of aubergine. Minor imperfections. [Lot.] *Heights 4 $\frac{1}{4}$ and 6 $\frac{1}{4}$ inches*

[See illustration of coupe]



TOP ROW: NUMBERS 301-305-301

AT CENTRE: NUMBER 302

BELOW: NUMBERS 303-304-303

15-
305. FAMILLE ROSE TEAPOT WITH FLORAL DECORATION *Ch'ien Lung*
Apple-form, with plain loop handle; reserved with brightly colored floral medallions in a diapered gold ground. Minor age crack; repaired. Height $4\frac{1}{2}$ inches

[See illustration]

40-
306. PEACHBLOOM WRITER'S WATER COUPE *K'ang Hsi*
Squat globular coupe, coated with the fluctuating ruddy and ashes of roses tones of a ripe peach. Six-character *nien hao* underfoot. Has carved ivory cover. Repaired. Diameter $4\frac{1}{2}$ inches

25- 307. THREE-COLOR ANIMALISTIC RHYTON K'ang Hsi
 In the form of an ox's head, delicately painted in aubergine with touches of yellow and brownish black, and molded with a thong looped about the horns; age cracks. Rare. Together with a Ch'ien Lung shell coupe. [Lot.]
Height 4¾ inches

190- 308. YÜEH YAO SMALL BOWL AND DISH T'ang
 Lightly scalloped round dish, centring an impressed seal mark; and a deep hexafoil bowl incised with a palmette; coated with brownish green and sea green glazes respectively. One has stand. (Semon) Diameters 5 and 3¼ inches

50- 309. THREE BLANC DE CHINE CABINET PORCELAINS Ming and K'ang Hsi
 Plain cylindrical tripod brush holder, lingulate feeding bowl with impressed lotus motives, and a K'ang Hsi beaker incised with plantain leaves. One has case. [Lot.]

55- 310. TWO YELLOW AND CREAM GLAZED TERRA COTTA ANIMAL STATUETTES T'ang
 Standing nasturtium yellow dog in alert pose, and a crouching white ram; hollow cast. [Lot.] Heights 3½ and 5¾ inches

20- 311. THREE BLEU-VERTE SMALL BOWLS K'ang Hsi
 One decorated with ducks and nelumbian plants; and a pair with grape medallions; in iron red, green, yellow and underglaze blue. K'ang Hsi and apocryphal Ch'êng Hua marks underfoot. [Lot.] Diameter 4½ and 5 inches

140- 312. LUNG CH'ÜAN CELADON DEEP DISH Sung
 Flaring round dish with molded rim and foot; coated with a pellucid blue-green glaze meshed with giant crackle. Has stand. (Semon) Diameter 5¼ inches
 From C. T. Loo & Co., New York

60- 313. PAIR IMPERIAL YELLOW RICE BOWLS Ch'ien Lung
 Hemispherical bowl on ring foot; the interior and exterior invested with a vitreous Imperial yellow glaze. Seal mark of the reign underfoot. In case. (Chinese Private Collector) Diameter 5 inches

260- 314. RARE KUAN YAO CABINET BOTTLE Sung
 Oblate body rising to a tall tapering ring-molded neck with flaring lip; incised with linear bands, and coated with a boldly crackled sea green glaze showing ruddy buff mottlings. Small repair. Has stand. (Semon) Height 5½ inches
 From Walter Hochstadter, New York

[See illustration]



TOP ROW: NUMBERS 315-314-315

BELOW: NUMBERS 317 AND 316

140-

315. PAIR RARE LUNG CH'ÜAN CELADON HEXAGONAL SMALL VASES WITH SLIP DECORATION *Sung*

Hexagonal pear-shaped vase with spreading mouth and foot; delicately decorated in slip with peonies and *ju-i* lappets linked by intersecting scrolls, and coated with a pellucid sea green glaze. Have stands. (*Semon*) *Height 6 inches*

From C. T. Loo & Co., New York

Described and illustrated in Warren E. Cox, *The Book of Pottery and Porcelain*, vol. 1, p. 158, pl. 45

[See illustration]

100- 316. LUNG CH'ÜAN CELADON PEONY BOWL Sung
 Shallow coniform bowl with notched rim, the interior lightly modeled with
 peony blossoms surrounded by foliage; grayish celadon glaze with streaky color-
 less crackle. Has stand. Diameter 8¼ inches

Collection of G. Winthrop Brown, New York

[See illustration]

80- 317. LUNG CH'ÜAN CELADON BOWL WITH FLORAL DECORATION Sung
 Deep flaring bowl with molded rim, ring-foot; the interior incised with a roundel
 of star flowers and peonies; coated with a viscous olive green glaze showing bold
 crackle. Has stand. (*Semon*) Diameter 8½ inches

From Walter Hochstadter, New York

[See illustration]

120- 318. SANG DE BOEUF BALUSTER-SHAPED CABINET VASE K'ang Hsi
 Slender vase, coated with a crackled oxblood glaze darkening toward the base
 and paling to celadon at lip; minor cracks at lip. Has stand. (*Semon*)
Height 5¾ inches

50- 319. PAIR IMPERIAL THREE-COLOR DRAGON DISHES WITH YELLOW GROUND K'ang Hsi
 The cavetto incised with five-clawed dragons contesting the jewel, the exterior
 with bunches of grapes; leaf green and aubergine on an Imperial yellow ground.
 Six-character *nien hao* underfoot. In case. (*Chinese Private Collector*)
Diameter 5¼ inches

130- 320. CELADON BOWL WITH FLORAL DECORATION Sung
 Round bowl with molded lip, the interior incised with a crisp floral motive bor-
 dered by hatchings; coated with an unctuous olive green glaze. (*Semon*)
Diameter 5½ inches

From Walter Hochstadter, New York

160- 321. YÜEH YAO LOTUS DISH Five Dynasties
 Ovoid dish, the interior lightly incised with lotus motives; coated with a grayish
 celadon glaze; an incised inscription underfoot. Minor age crack. Has stand.
 (*Semon*) Diameter 5½ inches

From C. T. Loo & Co., New York

Described and illustrated in Warren E. Cox, *The Book of Pottery and Por-
 celain*, vol. I, p. 123, pl. 35

Illustration of numbers 316 and 317 appears on the preceding page

322. TEMMOKU WARE MELON-LOBED VASE

Sung

25- Broad-mouthed vase with hexafoil lip, flaring foot; coated with a lightly dappled purplish black glaze, halting irregularly at base. (*Semon*)

Height 6 inches

From Howard Back, New York

323. YÜEH YAO TWO-TIERED BOWL AND STAND

T'ang

45- Deep round ring-molded bowl on eleven incurvate supports, affixed to a dish-type stand with tall flaring foot; the buff paste washed with a crackled watery green glaze. Minor repairs.

Height 5¾ inches

324. LIGHT APPLE GREEN CABINET VASE

K'ang Hsi

30- Pear-shaped vase with flaring mouth and ring foot; clothed in a pale apple green glaze meshed with small *café au lait* crackle; 'iron' foot. Minor repair at lip.

Height 6 inches

325. CHÜN YAO TRIPOD KORO

Sung or Yüan

90- Compressed globular body with short straight neck and flanged lip, slightly warped; invested with a smooth even sky blue glaze to the tips of the short cabriole feet, the paste showing gray through the glaze at the rim, and burnt brown where exposed at the feet and in unglazed patches on the interior. Has stand. (*N. Y. Private Collector*)

Height 5 inches

Exhibited at the Cleveland Museum of Art, Cleveland, O.

Collection of Mrs Samuel T. Peters, Parke-Bernet Galleries, Inc, 1944

[See illustration]

326. CHÜN YAO DEEP BOWL

Sung or Yüan

170- Rounded deep bowl with straight lip; invested with a faintly crackled sky blue glaze ending above the buff stoneware foot; the interior with frosted purple splashes enclosing grayish areas partially covered by olive brown flecked with green. Has stand. (*Semon*)

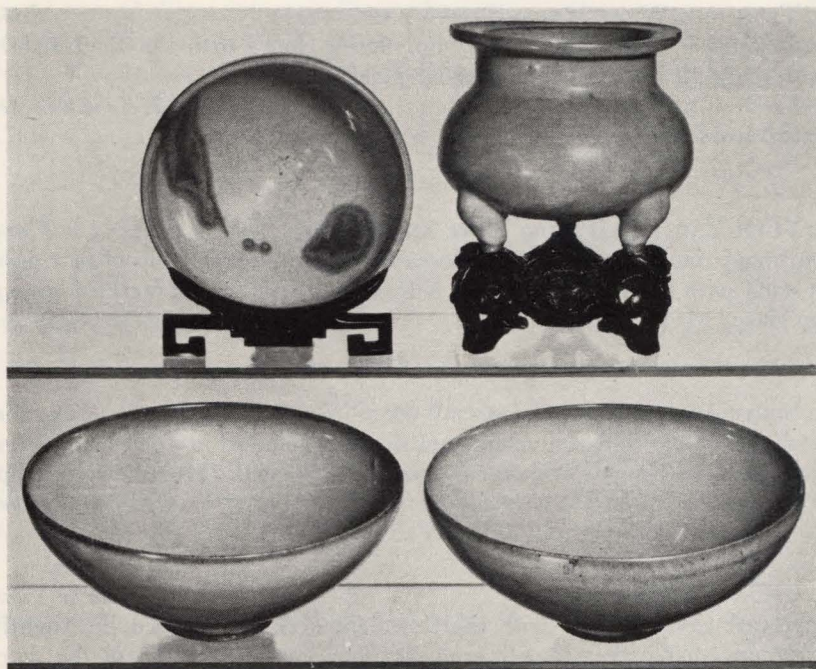
Diameter 5¾ inches

Pottery Exhibition, Japan Society, New York, 1914, no. 235

Collection of Mrs Samuel T. Peters, Parke-Bernet Galleries, Inc, 1944

[See illustration]

Illustration of numbers 325 and 326 appears on the following page



AT TOP: NUMBERS 326 AND 325

BELOW: NUMBER 327

600- 327. PAIR CHÜN YAO DEEP BOWLS

Sung

Rounded bowl expanding from the molded ring foot and contracting slightly at the rim; invested with an opaque stone blue glaze of brilliant texture, shallowing at the rim to reveal a ring of brown. Minor age crack. (*Semon*)

Diameter 8½ inches

Collection of Mrs S. K. DeForest, New York, 1936

[See illustration]

40- 328. FA HWA GINGER JAR WITH AUBERGINE GROUND

Ming

Ovoid jar, decorated with turquoise blue and buff lotus sprays and a radial petal collar, outlined in slip on a minutely crackled aubergine ground. Small repairs at lip.

Height 6¼ inches

329. PAIR FAMILLE ROSE FIGURAL WALL VASES Ch'ien Lung

45- Melon-form wall vase painted with blossoms in the *famille rose* colors and applied with two boys grasping the ring handles. Together with a cylindrical *pi t'ung* molded with Longevity symbols on a scale ground. Minor imperfections. [Lot.] Heights 4¼ and 6½ inches

330. CHERRY RED BOWL Ch'ien Lung

80- Rounded conical bowl, the exterior invested with a cherry red glaze, the interior glazed white. Seal mark of the reign. (N. Y. Private Collector) Diameter 6 inches

Collection of Mrs Samuel T. Peters, Parke-Bernet Galleries, Inc, 1944

331. PARCEL-GLAZED BISQUE GROUP Ch'ien Lung

70- Seated mother in fluctuating starch blue and white robes, with a child nursing at her breast; heads and hands in unglazed white bisque. Height 6½ inches

332. TWO BOWLS WITH CHERRY RED GROUND Ch'ien Lung and Chia Ch'ing

45- Ovoid bowls, one with cherry red exterior and robin's-egg blue interior; the other having exterior reserved with branches of white prunus blossoms. Minor imperfections. (Hasbrouck) Diameter 6¾ inches

333. PAIR FAMILLE VERTE SMALL POINT BOTTLES K'ang Hsi

180- Graceful bottle with tall tapering neck, on ring foot; decorated with vases and tasseled gourds below *ju-i* lappet and diapered bands, in green and iron red with touches of aubergine, yellow and underglaze blue. Have stand.

Height 6¼ inches

Collection of Percy R. Pyne, New York

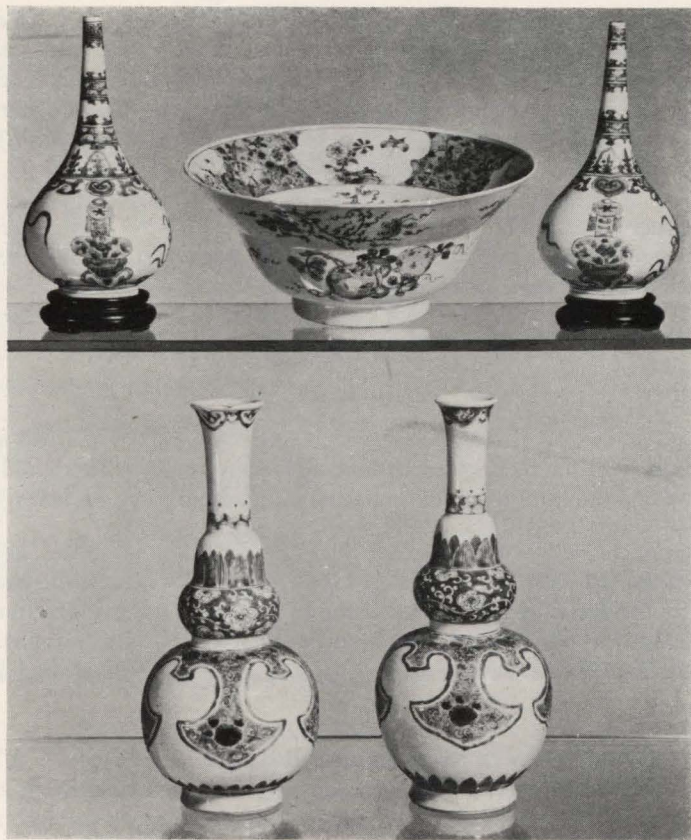
[See illustration]

334. FAMILLE VERTE BOWL WITH SQUIRREL AND FRUIT DECORATION

30- Bell-shaped bowl with wide sloping rim, painted in the *famille verte* enamels with squirrels clambering upon peach sprays, below a collar of lotus scrolls repeated on the interior. Minor imperfections. Diameter 8 inches

[See illustration]

Illustration of numbers 333 and 334 appears on the following page



TOP ROW : NUMBERS 333-334-333

BELOW : NUMBER 335

300-

335. PAIR FINE FAMILLE VERTE PERSIAN-FORM BOTTLES

K'ang Hsi

Ovoid vase with tall slightly flaring neck swelling into an acorn-shaped knob at its base; of white porcelain, decorated in the *famille verte* enamels with green floral lappets, the knob with an iron red floral band supporting a collar of imbricated petals. Small repair.

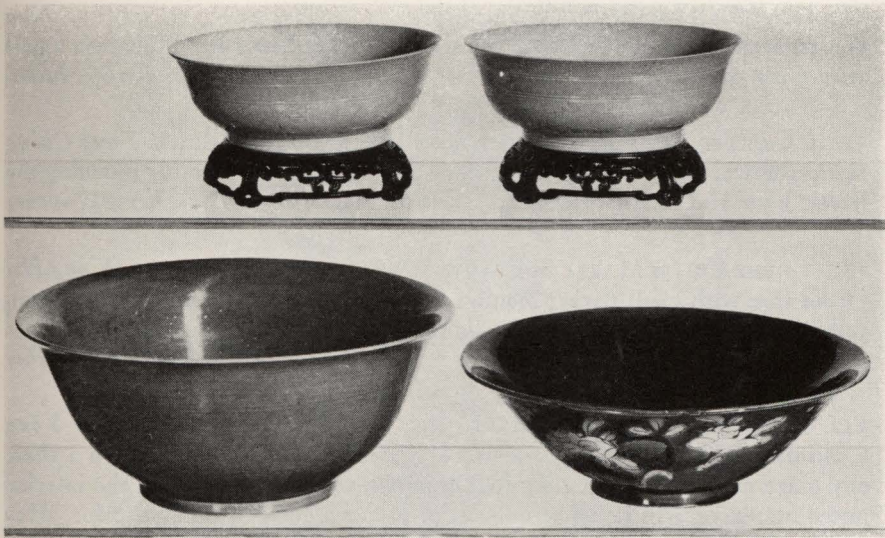
Height 9½ inches

Collection of James A. Garland, New York

Collection of J. P. Morgan, New York

Collection of Adolph Lewisohn, Parke-Bernet Galleries, Inc, 1939

[See illustration]



AT TOP: NUMBER 336

BELOW: NUMBERS 337 AND 338

180-

336. PAIR IMPERIAL ROBIN'S-EGG BLUE BRONZE-FORM BOWLS *Yung Chêng*
Ogival bowl, the exterior lightly incised with bands of angular fret scrolls overlaid at base by archaic dragon motives, and coated with a robin's-egg blue glaze; white interior. Six-character *nien hao* underfoot. Have stands. (*Chinese Private Collector*) *Diameter* 5¾ inches

[See illustration]

65-

337. CAMELLIA-LEAF GREEN BOWL *K'ang Hsi*
Ogival bowl with ring foot, in delicate resonant porcelain invested with a vitreous leaf green glaze. Six-character mark of the reign underfoot. *Diameter* 9¼ inches

[See illustration]

40-

338. THREE-COLOR BOWL WITH LEAF GREEN GROUND *K'ang Hsi*
Flaring ogival bowl incised with aubergine, yellow and white lotus and prunus sprays reserved in a leaf green ground, centring a polyporus fungus. Artemisia-leaf mark underfoot. Minor rim chips. Has stand. *Diameter* 8¾ inches

[See illustration]

15- 339. HONAN CELADON BOWL Sung
 Hemispherical bowl incised with floral motives and linear bands beneath a pale
 olive green glaze. Diameter 6½ inches

80- 340. CRACKLED BLUE AND WHITE 'SOFT PASTE' DRAGON BOWL *Yung Chêng*
 Hemispherical bowl penciled with a four-clawed dragon vigorously pursuing the
 jewel; brass rim. Minor age cracks. Has stand. Diameter 6¾ inches

15- 341. THREE-COLOR MARBLED PYRIFORM VASES K'ang Hsi
 Ovoid vase with small flaring mouth; coated with boldly splashed white, green,
 yellow and aubergine glazes. Lip lightly ground. Has stand. Height 7¼ inches

35- 342. CHÜN YAO LAPIS BLUE BOWL Yüan
 Coniform bowl of iron gray stoneware, coated nearly to the foot with a thick
 oily glaze of lapis blue thinning to a brownish tone around the lip, the interior
 pitted at centre with lava-like bubbles of paste; a bowl of unusual color. Has
 stand. (*N. Y. Private Collector*) Diameter 7 inches
 Collection of Mrs Samuel T. Peters, Parke-Bernet Galleries, Inc, 1943
 Pottery Exhibition, Japan Society, New York, 1914, no. 239
 Exhibition of Early Chinese Pottery and Sculpture, Metropolitan Museum of
 Art, New York, 1916, no. 168, and illustrated in the catalogue

15- 343. Tz'U CHOU TURQUOISE BLUE TRIPOD BOWL Sung or Yüan
 Squat round bowl with three unglazed stump feet, the exterior sketched with
 dark blue lotus motives, and coated with a turquoise blue glaze; copper rim.
Diameter 7¾ inches

100- 344. FOUR POLYCHROMED TERRA COTTA MORTUARY Wei
 STATUETTES OF MUSICIANS
 Graceful kneeling figures of female musicians in bell-sleeved robes, each holding
 an instrument; show traces of red and white pigment. Small repairs, as usual.
Heights 6¾ to 7¼ inches

40- 345. TURQUOISE BLUE BRONZE-FORM VASE WITH ELEPHANT HANDLES K'ang Hsi
Tui-form vase with elephant-head loop handles, coated with a uniform tur-
 quoise blue glaze with minute *truité* crackle. (*Chinese Private Collector*)
Length 9½ inches

[See illustration]



[NUMBERS 345 AND (ABOVE) 346]

260-

346. FINE SANG DE BOEUF FLUTED BOWL

K'ang Hsi

Graceful flaring bowl with narrow flutings, clothed in a pale celadon glaze with irregular crackle and overlaid with a brilliant pitted oxblood glaze, thickening in the fluted depressions and flowing to the cavetto and foot, the latter exceptionally well formed. (*Semon*)

Diameter 8 1/4 inches

Collection of George S. Palmer, Westomere, New London, Conn.

Collection of William H. Whitridge, Parke-Bernet Galleries, Inc, 1939

[See illustration]



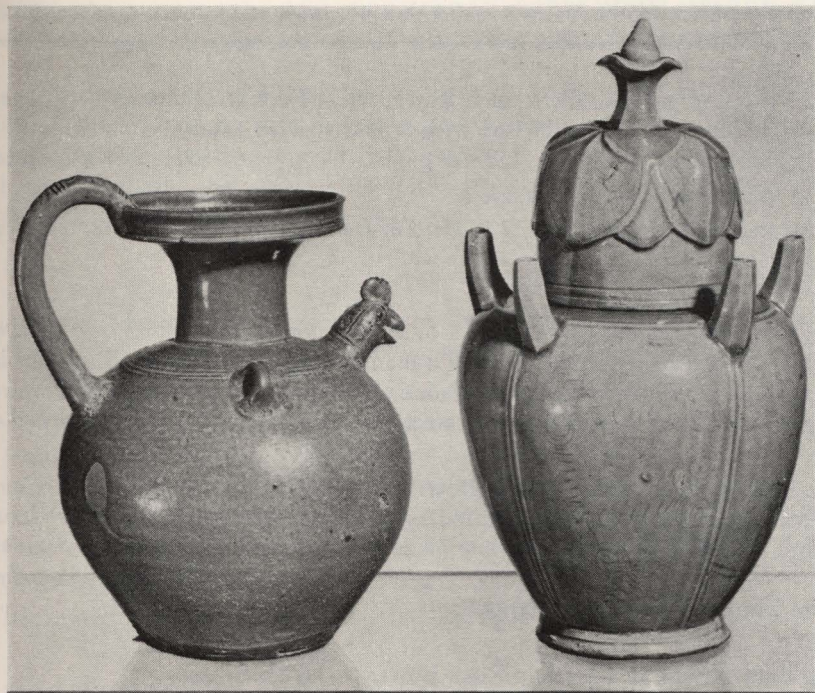
[NUMBERS 348 AND (ABOVE) 347]

160- 347. HONAN CHIEN YAO TWO-HANDLED JAR OF IMPORTANT SIZE *Sung*
 Broad-mouthed ovoid jar with lightly furrowed cylindrical neck and molded lip, two loop handles; coated with a dense purplish black glaze spattered with copper red 'oil' spots, the lower third unglazed. (*Semon*) Height 9½ inches
 From Walter Hochstadter, New York

[See illustration]

35- 348. TEMMOKU WARE BOWL OF UNUSUAL SIZE *Sung*
 Deep round bowl with flanged and molded rim; coated with a purplish black glaze yielding to a fibrous iron rust brown at lip. Diameter 11 inches
 From Kano Oshima, New York

[See illustration]



185- [NUMBER 350]

[NUMBER 349]

349. YÜEH YAO COVERED JAR WITH FIVE SPOUTS

T'ang

Lightly paneled ovoid jar, the shoulder molded with five hexagonal upright spouts, the high dome cover draped with lotus leaves and having floral finial; delicately incised with large floral motives beneath the somewhat crackled greenish gray glaze. Minor repairs. (Semon)

Height 11¾ inches

From Walter Hochstadter, New York

Described and illustrated in Cox, *The Book of Pottery and Porcelain*, vol. 1, p. 122, fig. 265

[See illustration]

250- 350. RARE YÜEH YAO EWER WITH BIRD'S-HEAD SPOUT

T'ang

Globose, with trumpet mouth; loop handle, cock's-head spout and two suspension loops stamped with tiny rosettes and joined by linear bands; coated with a granular greenish gray glaze of soft lustre. Minor rim chips. (Semon)

Height 9 inches

From Mathias Komor, New York

Described and illustrated in Warren E. Cox, *The Book of Pottery and Porcelain*, vol. 1, p. 101, fig. 233

[See illustration]

70- 351. YING CH'ING YAO CONIFORM BOWL, WITH FLORAL DECORATION *Sung*
Hexafoil rim, the interior incised with a bold swirled rosette; invested with a
misty blue glaze. Has stand. (*Semon*) *Diameter 7½ inches*

From Warren E. Cox, New York

Illustrated in Warren E. Cox, *The Book of Pottery and Porcelain*, vol. I, p. 134,
fig. 274

15- 352. SPOTTED CELADON STATUETTE OF KWAN TI *Ming*
Seated bearded figure in the guise of a man of letters, holding a manuscript in
his right hand; coated with a pale celadon glaze spotted with cobalt blue; brown
bisque base. Small repairs and imperfections. *Height 8 inches*

70- 353. OYSTER WHITE SCALLOPED BOWL *Sung*
Delicate coniform bowl with hexafoil rim, the interior incised with three lotus
sprays; coated with an oyster white glaze faintly tinted with green. (*Semon*)
Diameter 7¼ inches

From Mathias Komor, New York

90- 354. PAIR IMPERIAL FAMILLE ROSE BOWLS WITH BLUE AND
WHITE DECORATION *Tao Kuang*
Slightly flaring bowl, the exterior reserved with four medallions enameled with
branches of peonies, peaches, and pomegranates, in an incised *rose du Barry*
ground with painted lotus decoration; blue and white interior with a basket of
flowers surrounded by flowering and fruiting branches. Seal mark underfoot.
(*N. Y. Private Collector*) *Diameter 5¾ inches*

Collection of Alfred E. Hhipisley, New York, 1925

Exhibited at the Smithsonian Institution, Washington, D. C., 1887-1912

20- 355. POWDER BLUE OVOCYLINDRICAL VASE *K'ang Hsi*
Small-mouthed vase, invested with a flocculent powder blue glaze etched with
traces of gilded inscriptions and foliage. Has teakwood cover. *Height 8 inches*

65- 356. GREEN AND YELLOW GLAZED TERRA COTTA MORTUARY
STATUETTE OF A DANCER *T'ang*
Vigorously modeled swaying figure with one arm upraised; the long gown in
nasturtium yellow glaze streaked with green, the unglazed face showing traces
of polychrome. (*Semon*) *Height 8 inches*

From C. T. Loo & Co., New York

Illustrated in Warren E. Cox, *The Book of Pottery and Porcelain*, vol. I, p. 110,
fig. 249

357. YÜEH YAO FOUR-HANDLED JAR

T'ang

550- Ring-molded ovoid jar with four looped fillet suspension handles; in gray paste, the upper half coated with a finely crackled pale olive green glaze displaying a brownish splash. (*Semon*)

Height 8 inches

From Walter Hochstadter, New York

358. LIVER RED GALLIPOT

Ch'ien Lung

300- Graceful biberon with small aperture; enveloped in a monochrome liver red glaze of 'lemon peel' texture; white lip and interior.

Height 8 inches

359. IMPERIAL AUBERGINE AND WHITE DRAGON BOWL

K'ang Hsi

450- Round flaring bowl with vitreous grayish white glaze reserved in aubergine with an incised decoration of two five-clawed dragons pursuing the jewel amid clouds. Six-character *nien hao* of the reign underfoot. (*N. Y. Private Collector*)

Diameter 8 inches

Collection of Stephen Winkworth, Esq.

Illustrated in Edgar Bluett, *Ming and Ch'ing Porcelains*, 1933, pl. xvi, no. 51

360. SPLASH-GLAZED TERRA COTTA STATUETTE OF A HORSE

T'ang

230- Well-modeled horse with open mouth, on oblong base; coated with a minutely speckled creamy white glaze streaked with leaf green, the trappings with green and yellow splash glazes. Small repairs, as usual.

Height 10¾ inches

[See illustration]

361. TWO GREEN AND YELLOW GLAZED POTTERY MORTUARY STATUETTES

T'ang

600- Serene standing figures of court ladies in long green and yellow glazed robes, one showing a splashed effect, the unglazed heads with traces of polychromy. Repaired, as usual. [Lot.]

Height 10¼ and 12¾ inches

[See illustration of one]

362. YELLOW GLAZED TERRA COTTA STATUETTE OF A HORSE

T'ang

230- Long-legged horse in collected pose; coated with a thin greenish yellow glaze, the unglazed saddle and blanket showing traces of red pigment. Some repairs as usual. Has stand. (*N. Y. Private Collector*)

Height 13½ inches

[See illustration]

Illustration of numbers 360 to 362 inclusive appears on the following page



TOP ROW : NUMBERS 360 AND 361

BELOW : NUMBERS 363 AND 362

- 120- 363. SPLASH-GLAZED TERRA COTTA MORTUARY STATUETTE T'ang
Seated court lady with splash-glazed skirt, holding a small dog; the smiling unglazed head with traces of pigment. Small repairs, as usual. Has stand. In case. Height 14¾ inches

[See illustration]

- 30- 364. PAIR BLUE AND WHITE PHOENIX DISHES Yung Chêng
Shallow round dish, the cavetto decorated in underglaze blue with a roundel of phoenixes amid lotus scrolls, the motive repeated on the exterior. Six-character *nien hao* underfoot. In cases. (*Chinese Private Collector*) Diameter 8 inches

365. POWDER BLUE GINGER JAR WITH BLUE AND WHITE DECORATION

K'ang Hsi

35- Ovoid jar, the finely dappled powder blue ground reserved with four cusped cartouches of *koro* and lakeshore landscapes with figures. Apocryphal mark of Ch'êng Hua underfoot. Has cover.
Height 8¼ inches

366. ROSE-STRAWBERRY BOTTLE

Yung Chêng

70- Globular body with tall chimney neck, covered with a uniform rose red glaze, faintly *soufflé* in texture. Has stand.
Height 8½ inches

Collection of Mrs Samuel T. Peters, Parke-Bernet Galleries, Inc, 1944

367. PAIR BLUE AND WHITE GINGER JARS WITH LANDSCAPE DECORATION

Yung Chêng

30- Ovoid jars, painted in deep underglaze blue with views of fishermen's villages, small craft and flying geese. Minor rim chip. Have covers.
Heights 8¼ and 8¾ inches

368. SANG DE BOEUF BALUSTER VASE

K'ang Hsi

10- With short truncated neck, and clothed in a rich oxblood glaze of lightly pitted texture, mottled with coagulations and with a tracery of dark crackle upon the shoulders. (N. Y. Private Collector)
Height 8¾ inches

369. FAMILLE VERTE TAZZA WITH FLORAL DECORATION

K'ang Hsi

25- Shallow round compotier on incurvate scolo; enameled in the *famille verte* colors with a vase of peonies enclosed by Taoist symbols and diaper bands.
Diameter 9 inches

370. PAIR CREAM-GLAZED TERRA COTTA MORTUARY STATUETTES

T'ang

50- Erect figure of a court lady in high-waisted long robes, her hands clasped before her; washed with a creamy yellow glaze. Small repair.
Height 9 inches

371. YELLOW GLAZED TERRA COTTA ANIMAL STATUETTE

Sui

10- Hollow-cast recumbent Bactrian camel, his saddle bags molded with monster masks; coated with a crackled pale yellow glaze. Minor imperfections.
Length 9¼ inches

372. CAMELLIA-LEAF GREEN T'ANG-FORM VASE

Ch'ien Lung

45- Ovoid vase with tall banded neck and two erect tubular handles with monster-head handles; coated with a bright camellia-leaf green glaze exhibiting fish roe crackle. Has stand.
Height 12 inches

[See illustration on the following page]



[373]

[374]

[372]

150- 373. IMPORTANT SANG DE BOEUF PEAR-SHAPED VASE

K'ang Hsi

Compressed globular body with tall wide neck, on high expanding foot; covered with a superb *lang yao* or oxblood pitted glaze with crackle, showing ruby tints and areas of coagulations. The glaze ends in an even roll at the foot rim, which is glazed white; the base celadon, the mouth rim and interior also celadon. (*N. Y. Private Collector*)

Height 12¾ inches

Collection of Thomas B. Clarke, New York

Collection of H. B. Dominick, New York

Collection of Julius Chein, New York

From Parish-Watson & Co., Inc., New York

[See illustration]

115- 374. TURQUOISE BLUE BOTTLE-FORM VASE

Ch'ien Lung

Bulbous body curving to a tall cylindrical neck, and coated with a pellucid turquoise blue glaze charged with a minute *truité* crackle. Minor age crack.

Height 14¼ inches

[See illustration]



[NUMBER 375]

[NUMBER 376]

285-

375. TURQUOISE BLUE PARCEL-GLAZED BISQUE STATUETTE OF AN OFFICIAL
Ming

Standing figure wearing a long-sleeved turquoise robe tied with cords, an unglazed palm-leaf fan in his right hand; the head, also unglazed, is surmounted by a fluted shell-shaped cap; the features and wisp of beard beautifully modeled.

Height 18½ inches

Collection of Yamanaka & Co., Inc., Parke-Bernet Galleries, Inc, 1944

[See illustration]

- 250- 376. IMPERIAL YELLOW DISH WITH BLUE AND WHITE DECORATION *Ming*
 Deep round dish, the Imperial Yellow ground reserved with floral and pomegranate clusters in underglaze blue and white, a peony vine at back. Six-character mark of Hung Chih underfoot. Has stand. *Diameter* 10 $\frac{1}{4}$ inches

Note: A similar example is in the Victoria and Albert Museum, London.

From Bensabott, Chicago

[See illustration on the preceding page]

- 15- 377. FAMILLE ROSE PEAR-SHAPED VASE WITH FIGURAL DECORATION *Yung Chêng*
 Sketched in the characteristic *famille rose* colors with Lu-hsing on his mule, a smiling peasant, and pine tree, on a white ground. (*Hasbrouck*)
Height 9 $\frac{1}{4}$ inches

- 100- 378. PAI TING YAO DOUBLE-GOURD VASE *Sung*
 Delicately incised with chrysanthemum blossoms on vines with scrolling tendrils, under an ivory white glaze. (*Semon*) *Height* 12 inches
 Collection of Yamanaka & Co., Inc., Parke-Bernet Galleries, Inc, 1944

- 25- 379. T'ZU CHOU TWO-HANDLED JAR *Yüan or Early Ming*
 Wide-mouthed oblate jar with two small loop handles, the upper half coated with an ivory yellow glaze and sketched with sepia sprigs. In case.
Height 9 $\frac{1}{2}$ inches

- 110- 380. CUCUMBER GREEN TZ'U CHOU DECORATED VASE *Sung or Yüan*
 Pyriform bottle with expanding neck, decorated in black with scrolling stems of foliations under a uniform dark cucumber green glaze. *Height* 9 $\frac{3}{4}$ inches
 Collection of Mrs Samuel T. Peters, Parke-Bernet Galleries, Inc, 1944
 Exhibited at the Metropolitan Museum of Art, New York

- 35- 381. OLIVE GREEN TRIPOD BULB DISH *Ming*
 Shallow round bowl with two circlets of bosses, on three *ju-i* form feet; invested with an olive green glaze of varying tones, the underfoot incised with the numeral *san* (3). *Diameter* 9 $\frac{1}{2}$ inches
 Collection of Mrs Samuel T. Peters, Parke-Bernet Galleries, Inc, 1944

- 40- 382. TZ'U CHOU CRACKLED STONWARE JAR *Yüan or Ming*
 Broad-mouthed ovoid jar, coated with a finely crackled buff glaze and sketched in sepia with phoenix and dragon cartouches, floral lappets and shoulder bands.
Height 9 $\frac{1}{2}$ inches



[NUMBER 383]

[NUMBER 384]

425-

383. SPLASH-GLAZED TERRA COTTA STATUETTE OF A HORSE *T'ang*
 Standing yellow figure with lowered head touching his right foreleg; has green saddle and ornamental toad pendants, the blanket and heavy stylized mane in yellow, green and cream splash glazes. Small repairs as usual.

Height 14 inches

[See illustration]

200-

384. PAIR LARGE SPLASH-GLAZED TERRA COTTA STATUETTE OF CAMELS *T'ang*
 Long-legged Bactrian camel with head thrown back and mouth open; coated with nasturtium brown glaze, the saddle blankets with variegated brown, green and cream splash glazes. Repaired, as usual. *Heights 22 and 23½ inches*

[See illustration of one]

- 35- 385. BLUE AND WHITE GINGER JAR WITH ORIGINAL COVER *K'ang Hsi*
 Ovoid jar, painted in rich underglaze blue with ascending and descending clusters of lotus and other blossoms between infloriated lappets; has original disc cover. *Height 10½ inches*
- 30- 386. IRIDESCENT GREEN GLAZED POTTERY STOVE *Han*
 Oblong stove, the lattice-molded top pierced with two domical apertures; silvery iridescence. *Length 11 inches*
- 40- 387. POLYCHROMED TERRA COTTA ANIMAL STATUETTE *Six Dynasties*
 Standing figure of a humped bullock with upraised head and harness hung with Buddhist ornaments, on oblong base; shows traces of red and white pigment. Carefully repaired. *Length 10¼ inches*
- 50- 388. TZ'U CHOU WIDE-MOUTHED JAR WITH ANIMAL DECORATION *Sung*
 Flaring round jar, with four tiny loop handles; sketched in shaded sepia with a deer and floral motives, on a crackled ivory ground suffused with violet. Base unglazed. Minor age cracks. *Height 10¼ inches*
- 60- 389. TWO PARCEL-GLAZED TERRA COTTA MORTUARY STATUETTES *Sui and T'ang*
 Cream-glazed male figure in tunic high boots; and a court lady with cucumber green skirt. Small repairs, as usual. Have stands. In cases. *Heights 10½ and 10¾ inches*
- 60- 390. PAIR GREEN AND BROWN GLAZED POTTERY ANIMALISTIC ROOF TILES *Ming*
 Green glazed horse in full gallop, with erect nasturtium brown mane and looped tail; on cloud-molded vaulted base. Small repairs. *Length 11 inches*
- 60- 391. PAIR GREEN AND BROWN GLAZED POTTERY ANIMALISTIC ROOF TILES *Ming*
 Similar to the preceding, but with slight variations in color. Repaired. *Length 11 inches*
- 110- 392. BLANC DE CHINE RETICULATED PORCELAIN 'MARCO POLO' CENSER *Late Ming or K'ang Hsi*
 Octagonal floral-molded censer with two loose-ring handles, on six t'ao t'ieh bracket feet; pierced 'pagoda roof' cover with flaming lotus finial. Small repair. *Height 12 inches*

Collection of John del Drago, New York



[395]

[393]

[394]

100-
393. SPLASH-GLAZED TERRA COTTA DISH WITH ROSETTE DECORATION

T'ang

Deep round dish, the cavetto incised with a formalized peony rosette and coated with leaf green, nasturtium brown and white splash glazes. Has stand.
(Semon) *Diameter 9¼ inches*

From Mathias Komor, New York

Illustrated in Warren E. Cox, *The Book of Pottery and Porcelain*, vol. I, p. 120, fig. 264

[See illustration]

70-
394. BROWN AND YELLOW GLAZED TERRA COTTA MORTUARY STATUETTE

T'ang

Erect official in lotus-molded hat, and long nasturtium brown robes streaked with yellow and green. Head unglazed, shows traces of pigment. Repaired, as usual. *Height 16¼ inches*

[See illustration]

- 55-- 395. THREE-COLOR GLAZED TERRA COTTA STATUETTE T'ang
 Seated figure of a court lady gazing into a hand mirror; garbed in a leaf green and sky blue gown with nasturtium yellow trimmings; head and hands unglazed, and show traces of polychromy. Repaired. Height 15¾ inches

[See illustration on the preceding page]

- 35-- 396. PARCEL-GLAZED PORCELANEOUS TERRA COTTA TWO-HANDLED JAR (LEI) Han
 Oblate jar with two deeply valanced *t'ao t'ieh* mask handles joined by incised linear and wave bands, the upper portion coated with a wash of crackled olive gray glaze. Length 12 inches

- 45-- 397. FAMILLE VERTE CHRYSANTHEMUM TEMPLE JAR K'ang Hsi
 Graceful jar with low cylindrical neck; decorated with bold chrysanthemum scrolls in iron red, green and aubergine, between leaf and *ju-i* lappet borders heightened with yellow. Minor age crack. Has cover and stand. Height 13 inches

- 100-- 398. POLYCHROMED TERRA COTTA ANIMAL STATUETTE Sui
 Seated long-haired dog with open lips, wearing a collar with bell; shows traces of white pigment. Height 13½ inches

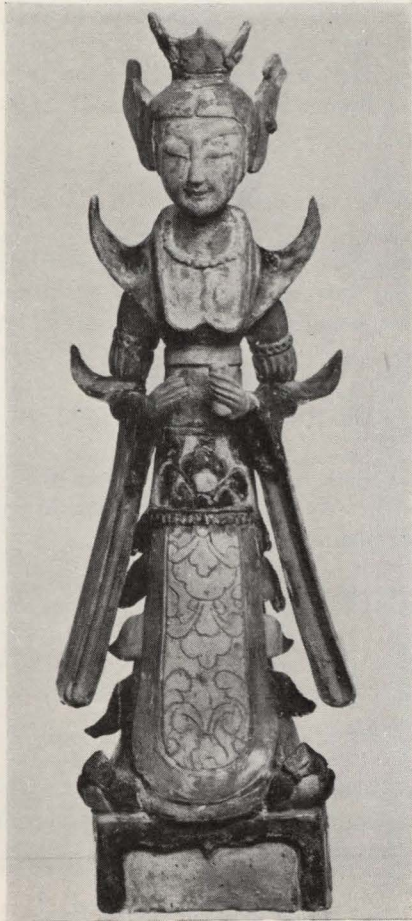
- 25-- 399. BLUE AND WHITE SHALLOW BOWL WITH DRAGON DECORATION Late Ming
 Ring-footed round bowl decorated in deep underglaze blue, the interior with Imperial dragon medallion, the exterior with dragons pursuing the jewel. Minor rim chips. (*Semon*) Diameter 13½ inches

- 75-- 400. IRIDESCENT CUCUMBER GREEN GLAZED POTTERY JAR Han
 Pyriform vase with flaring molded lip; incised with linear bands, and coated with an iridescent cucumber green glaze, the interior glazed nasturtium brown. Height 14½ inches

- 180-- 401. PAIR RETICULATED CELADON GARDEN SEATS Late Ming
 Barrel-shaped, the top with circular latticed cartouche, sides *ajouré* with *Fu* lions and 'pearls' amid leafage, below a molded floral collar. Height 16 inches
 Collection of Mrs Henry Evans, Parke-Bernet Galleries, Inc, 1945

- Low 402. LUNG CH'ÜAN CELADON LARGE LOTUS DISH Early Ming
 Deep round plaque, the interior incised with a bold peony bud and border of scale imbrications; coated with a heavy sea green glaze. (*Semon*) Diameter 16½ inches

Collection of Karl Bacher, Frankfurt-am-Main



[NUMBER 403]

Washburn

403. GLAZED TERRA COTTA STATUETTE OF A COURT LADY *T'ang*
 Slender standing figure with scroll, in *décolleté* gown with elaborate bell sleeves and floral 'embroidered' apron, on square plinth; in lemon and nasturtium yellow, lapis blue and green glazes, the head unglazed, with traces of polychromy. Repaired, as usual. *Height 25¼ inches*

[See illustration]

35- 404. BLUE AND WHITE 'HAWTHORN' BALUSTER-FORM BEAKER *XVIII Century*
 The rich cobalt blue ground hatched to symbolize the Winter's thawing ice and reserved with ascending prunus boughs. Has stand. (*Hasbrouck*)
Height 17¼ inches

140- 405. PAIR GREEN AND YELLOW GLAZED TERRA COTTA EQUESTRIAN ROOF TILES *Ming*
 Depicting Princess Miao-shen astride a galloping steed, and clutching a lotus spray, on vaulted oblong base; coated with leaf green and nasturtium yellow glazes, a few details in the unglazed buff paste. Careful repairs, as usual.
Heights 18½ and 19 inches

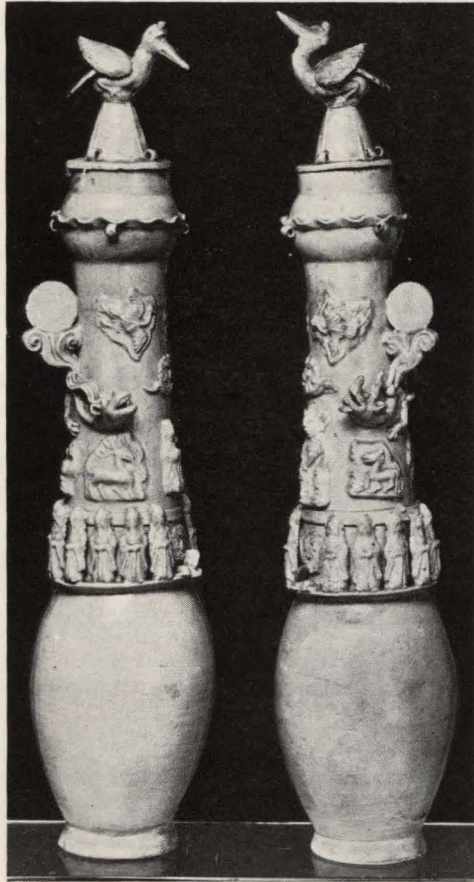
70- 406. FAMILLE VERTE TALL-NECKED VASE WITH MARINE DECORATION *Late K'ang Hsi*
 Outset cylindrical body with tall flaring neck and two gilded scroll handles, high spreading foot; delicately painted with groups of iron red and gold fish amid pale green aquatic plants. Age cracks.
Height 17 inches

70- 407. ROBIN'S-EGG BLUE OVOCYLINDRICAL VASE WITH SLIP DECORATION *Ch'ien Lung*
 Tall slender vase with high incurvate neck, decorated in white slip with scattered sprigs of blossoms, butterflies, etc., and coated with a pale greenish blue glaze.
Height 17¾ inches

55- 408. FAMILLE VERTE CLUB-SHAPED VASE *K'ang Hsi*
 Five-color decoration of an official with attendants and banner bearer, watching a sunset over a lake in a rocky landscape. *Height 18 inches*
 From F. Langweil, Paris
 Collection of Dr and Mrs Henry Barton Jacobs, Parke-Bernet Galleries, Inc,
 1940

70- 409. KUANGTUNG GRAY CRACKLE BOTTLE *XVIII Century*
 With chimney neck molded with reeded bands; coated with a bluish gray glaze spattered with rose, and intersected by a bold dark crackle. *Height 13¾ inches*
 From Yamanaka & Co., Inc., New York

35- 410. CELADON PLAQUE WITH DIAPER ORNAMENT *Ming*
 The gently domed cavetto incised with a diamond trellis, the border with floral scrolls; coated with a dense grayish green glaze interrupted under the foot.
Diameter 18 inches



[NUMBER 411]

Withdrew

411. PAIR GRAY-GLAZED STONEWARE MORTUARY VASES WITH ORIGINAL COVERS

T'ang

Tall-necked ovoid vase with onion-bulb mouth and pointed dome cover having stork finial, the neck applied with dragons, birds and other motives above a ring of freestanding deities; coated with a finely crackled greenish gray glaze. One cover with small repair. One repaired, the other in rare state of preservation.

Heights 34½ and 35 inches

From Warren E. Cox, Inc., New York

[See illustration]

412. IRIDESCENT GREEN AND YELLOW GLAZED POTTERY DRAGON JAR

Early Ming

30- Ovoid jar, the conforming cover with a finial figure of Buddha on lotus throne; molded with nasturtium yellow dragons flanking a stylized temple doorway, and coated with an iridescent cucumber green glaze. Some repairs.

Height 19 inches

413. TURQUOISE BLUE T'ZU CHOU STONWARE GARDEN SEAT

Yüan

200- Keg-shaped, molded with four *Fu*-lion masks between circlets of bosses, the top pierced with a 'cash' motive; boldly sketched with dark blue peony scrolls. Minor glaze abrasions.

Height 19½ inches

414. PAI TING YAO PILGRIM BOTTLE WITH MOLDED DECORATION

Sung

140- Impressed oval bottle with tall cylindrical neck having two angular suspension handles, the base pierced; lightly molded with dragon motives within fret-scrolled borders, and coated with a finely crackled ivory white glaze. Minor age cracks. Has stand. (*Chinese Private Collector*)

Height 13½ inches

415. POLYCHROMED TERRA COTTA BAS RELIEF FRIEZE TILE

Han

30- Molded in low relief with an *apsara* flying amid scrolling draperies and quaint bird figures; in dark gray pottery with traces of polychromy. Repaired. (*N. Y. Private Collection*)

9¼ x 17 inches

Collection of Yamanaka & Co., Inc., Parke-Bernet Galleries, Inc, New York

416. BLUE AND WHITE VASE

Kuang Hsü

15- Pyriform vase decorated with floral scrolls and leaf motives. Mark of the reign underfoot. Has stand. (*Hasbrouck*)

Height 15½ inches

417. BLEU-VERTE CYLINDRICAL VASE

Early K'ang Hsi

15- With knopped flaring neck; decorated in underglaze blue heightened with iron red, green and yellow enamels, and depicting groups of utensils between varying floral borders. Small repair.

Height 11¾ inches

418. MIRROR BLACK BOTTLE WITH GILDED DECORATION

Kuang Hsü

25- Tall-necked bottle, the lustrous black glaze sketched and gilded with deer and pine trees. Six-character mark of the reign underfoot. Has stand. (*Hasbrouck*)

Height 15¼ inches

419. BLUE AND WHITE VASE

Ch'ien Lung

15- Quadrangular bronze-form vase with four elephant-head handles, figural decoration and inscriptions. Mark of the reign underfoot. (*Hasbrouck*)

Height 13 inches

- 20- 420. THREE DECORATED PORCELAIN PLATES *XVIII Century*
Famille verte plate decorated with utensils and symbols of the *pa pao*; *famille rose* peony plate; and a Chinese 'Imari' floral plate. *Diameters* $8\frac{1}{4}$ to 9 inches
- 70- 421. APPLE GREEN FLUTED BOWL WITH FAMILLE VERTE DECORATION *K'ang Hsi*
 Bell-shaped scalloped bowl; the pale apple green glaze overlaid by clusters of blossoms in the *famille verte* enamels, the interior with Buddhist symbols and trellises. Minor imperfections. *Diameter* $8\frac{1}{4}$ inches
- 20- 422. SMALL CAFÉ AU LAIT VASE AND CELADON JAR *Ming and Yung Chêng*
 Cylindrical *café au lait* vase with giant vertical crackle; and a pear-shaped celadon jar molded with fret scrolls, have stands. [Lot.]
Heights $6\frac{1}{4}$ and $3\frac{3}{4}$ inches
- 35- 423. TERRA COTTA TRIPOD BOWL *Han*
 Wide-mouthed bowl on three mammiform feet stamped with a 'textile' pattern. *Height* 7 inches
- 45- 424. PAIR BROWN STONEWARE TEAPOTS AND PAIR COUPES *Ming or Early Ch'ing*
 Teapot and hot-water compartment formed as a double gourd with two loose ring handles and incised inscriptions; and two floriform coupes with leafy twig handles. [Lot.] (*Hasbrouck*) *Heights* 2 and 8 inches
- 80- 425. PAIR FAMILLE ROSE FLORAL DISHES *Ch'ien Lung*
 Decorated with diapered rose borders and yellow lappets, centring a peony spray, the exterior coated with a dappled peachbloom glaze. Seal mark of the reign underfoot. In case. (*N. Y. Private Collector*) *Diameter* $6\frac{1}{2}$ inches
- 40- 426. PAIR SKY BLUE RICE BOWLS WITH DRAGON DECORATION *Ch'ing*
 Ogival bowl, the exterior reserved with three iron red and gold dragon roundels in a sky blue ground of 'lemon peel' texture. Apocryphal K'ang Hsi mark underfoot. One repaired. (*Hasbrouck*) *Diameter* $4\frac{3}{4}$ inches
- 20- 427. THREE BLUE AND WHITE DECORATIVE ARTICLES *Late Ming and K'ang Hsi*
 Ming wine ewer with floral decoration; cylindrical writer's dish painted with groups of utensils; and a chrysanthemum plate. Minor imperfections. [Lot.]

[END OF SALE]

1 Successor \$ 14,930.25-

2 " " 17,910

Total \$ 31,935-

PARKE-BERNET GALLERIES • INC

*designs its catalogues and directs
all details of illustration, text
and typography*