



GIA®

FALL 2017

EDUCATION

Quarterly



Centuries of Opulence
JEWELS
OF **INDIA**

Earn Your
GIA Graduate
Gemologist® Diploma

2018 Worldwide Class Schedule

TABLE OF CONTENTS

Student Life 18
 Class Schedules..... 19
 Career Support Beyond the Diploma 24

GEMOLOGY

GG Graduate Gemologist® 04
GD Graduate Diamonds..... 05
GCS Graduate Colored Stones 06
AJP Applied Jewelry Professional™ 17

JEWELRY MANUFACTURING ARTS

JDT Jewelry Design & Technology 10
GJ Graduate Jeweler 11
CCC Comprehensive CAD/CAM for Jewelry.. 12
JD Jewelry Design 12

Cover: Mughal Diamond and Emerald Necklace with Earrings

Obtained from descendants of the Nizam of Hyderabad, this magnificent necklace and matching earrings are set with approximately 150 carats of Golconda diamonds and 47 Colombian emerald beads. They are strong symbols of the power and wealth of one of the richest ruling families of India.

Mughal Era • Hyderabad • 18th century • diamond and emerald in 22K gold • Necklace 20.5 x 18 cm, earrings 3 x 7.5 cm

Learn more about jewels of India on page 14

GIA (Gemological Institute of America)

World Headquarters The Robert Mouawad Campus 5345 Armada Drive Carlsbad, CA 92008 USA	New York Branch of Carlsbad Campus 50 W 47 th Street, 8 th Floor New York, New York 10036 USA
--	--

GIA.edu
 +1 800 421 7250 ext 4001
 admissions@gia.edu



07

Alumna Profile:
Giuliana Loglisci



08

Melee – Building Blocks of Contemporary Design



13

Alumna Profile:
Veronica Eckert



14

Centuries of Opulence:
Jewels of India

GIA's campus in Carlsbad is accredited by the Accrediting Commission of Career Schools and Colleges (ACCSC). GIA's campus in New York is accredited by the ACCSC as a branch of GIA's campus in Carlsbad. ACCSC's accreditation is institutional in nature and includes GIA's U.S. On Campus education only. GIA's Distance Education courses and lab classes do not fall within the purview of GIA's institutional accreditation by the ACCSC.



GIA Carlsbad: This institution is a private institution approved to operate by the California Bureau for Private Postsecondary Education. Approval to operate means the institution is compliant with the minimum standards contained in the California Private Postsecondary Education Act of 2009 (as amended) and Division 7.5 of Title 5 of the California Code of Regulations.

GIA New York: GIA's New York branch campus is licensed by the State of New York Bureau of Proprietary School Supervision.

For information about graduation rates, graduated students' median debt, gainful employment and other information, visit GIA.edu/student-consumer-information

©2017 Gemological Institute of America. All rights reserved. No reproduction of logos or images is allowed without specific written request and approval by GIA.



NEW YORK



CARLSBAD



BANGKOK

Begin Your Career With a GIA Credential

A GIA (Gemological Institute of America) education can help you take the next step or start a new career as a gem and jewelry industry professional in many different roles, including: sales, gemology, research, design, manufacturing and more.

GIA campuses are located in major gem and jewelry centers around the world. No matter which campus you attend, you'll study the same curriculum and be taught by industry veterans with extensive experience. Classrooms feature the latest equipment, software and tools, so you'll be fluent in technologies that employers value and are essential for success in this vibrant industry.

When you graduate, you'll have earned one of the industry's most respected professional diplomas. With GIA credentials after your name, your peers will know that you have an in-depth understanding of your field of study. You'll also join the ranks of fellow GIA alumni who are leaders throughout the industry.

A GIA diploma or certificate is essential to success. Invest in yourself. Start learning and get ready to get ahead.

Read more in this issue about our globally recognized credential programs, career support and student life on campus.



HONG KONG



LONDON



MUMBAI



TAIPEI





GG GRADUATE GEMOLOGIST®

GIA Graduate Gemologists often choose these careers:

Appraiser
Auction House Jewelry Specialist
Colored Stone Buyer
Diamond Buyer
Diamond Sorter/Grader
Estate Jewelry Dealer
Gemologist
Inventory Control Specialist
Jewelry Business Owner
Jewelry Buyer
Lab and Research Professional
Merchandiser
Pawnbroker
Retailer
Sales Associate
Wholesaler

The Most Coveted Credential in the Gem and Jewelry Industry

The GIA Graduate Gemologist® diploma program delivers a comprehensive gemological education on diamonds and colored stones. Using industry-essential gemological equipment, you will work with real diamonds and colored gemstones under the trained eyes of GIA instructors. Through extensive lab work, you will practice identifying and grading diamonds and colored stones in an efficient, accurate and consistent manner.

The Graduate Gemologist diploma program covers:

- Developing in-depth, hands-on experience with the GIA International Diamond Grading System™ and the 4Cs (color, clarity, cut and carat weight), and learning how they affect diamond value
- Evaluating a diamond's proportions and grading diamonds in the D-to-Z color range consistently and accurately
- Using gemological equipment and procedures to grade and identify hundreds of gemstones
- Explaining to stakeholders the GIA Colored Stone Grading System for evaluating gemstone quality
- Identifying and grading common and unusual colored stones
- Identifying characteristics, simulants and treatments, and knowing when advanced testing is required
- Translating technical knowledge into valuable information for effective sales and excellent service

What You Earn: Graduate Gemologist Diploma, Graduate Diamonds Diploma, Graduate Colored Stones Diploma

DIPLOMA REQUIREMENTS

📍 On Campus

Full-time program offered at GIA campuses worldwide
See pages 19, 21-22 for class schedule.

💻 Distance Education

A combination of eLearning courses offered through GIA in Carlsbad and instructor-led lab classes offered at GIA campuses and other locations worldwide (see *GIA Education Catalog* or GIA.edu for details).

Five eLearning courses

- Diamond Essentials
- Diamonds & Diamond Grading
- Colored Stone Essentials
- Colored Stones
- Gem Identification

Three lab classes

- Diamond Grading lab – 5 days (or 10 nights when applicable)
- Colored Stone Grading lab – 3 days (or 6 nights when applicable)
- Gem Identification lab – 5 days (or 10 nights when applicable)

See pages 20, 22-23 for lab class schedules.

For eLearning and lab class descriptions, visit GIA.edu/gem-education/distance



Learn more at GIA.edu/GG



GD GRADUATE DIAMONDS

GIA Graduate Diamonds graduates often choose these careers:

- Auction House Jewelry Specialist
- Diamond Buyer
- Diamond Sorter/Grader
- Jewelry Business Owner
- Retailer
- Wholesaler



The Science Behind the Sparkle

The GIA Graduate Diamonds diploma covers the technical expertise needed to grade, buy and sell diamonds with the insight of a seasoned professional. This diploma program explores the GIA diamond grading procedures to assess the 4Cs – color, clarity, cut and carat weight – and how they affect diamond value. Students use professional diamond grading equipment for the purposes of examining a diamond’s quality characteristics for grading and identification. Other topics include the role cut plays in the marketplace and important sectors of the diamond industry, including dealers, cutters and manufacturers.

The Graduate Diamonds diploma covers:

- Developing in-depth, hands-on experience with the GIA International Diamond Grading System™ and the 4Cs (color, clarity, cut and carat weight), and learning how they affect diamond value
- Grading diamonds in the D-to-Z color range
- Creating plotting diagrams
- Detecting diamond synthetics, treatments and simulants
- Understanding the effects of fluorescence on diamond body color
- Recognizing when advanced testing is required
- Speaking the language of diamonds confidently to customers, suppliers and vendors

What You Earn: Graduate Diamonds Diploma

DIPLOMA REQUIREMENTS

📍 On Campus

Full-time program offered at GIA campuses worldwide
See pages 19, 21-22 for class schedule.

💻 Distance Education

A combination of eLearning courses offered through GIA in Carlsbad and instructor-led lab classes offered at GIA campuses and other locations worldwide (see *GIA Education Catalog* or GIA.edu for details).

Two eLearning courses

- Diamond Essentials
- Diamonds & Diamond Grading

One lab class

- Diamond Grading lab – 5 days (or 10 nights when applicable)

See pages 20, 22-23 for lab class schedules.

For eLearning and lab class descriptions, visit GIA.edu/gem-education/distance



Natural rough and polished diamonds



Learn more at GIA.edu/GD



GCS GRADUATE COLORED STONES

GIA Graduate Colored Stones graduates often choose these careers:

- Appraiser
- Auction House Jewelry Specialist
- Colored Stone Buyer
- Estate Jewelry Dealer
- Jewelry Business Owner
- Jewelry Buyer
- Pawnbroker
- Retailer
- Wholesaler



Countless Colors, Limitless Possibilities

The GIA Graduate Colored Stones diploma explores the identification of common and unusual gemstones found in the marketplace. Subjects covered include the GIA Colored Stone Grading System and the correct usage of standard gemological equipment to distinguish natural, treated and synthetic gemstones. The program examines which gems are commercially important, shifting supply patterns, and how these factors affect gem prices and availability. This program also includes the study of more than 60 species of gemstones, and how illumination techniques can facilitate the identification process.

The Graduate Colored Stones diploma covers:

- Building a knowledge base about colored stones and the colored stone market
- Using gemological equipment effectively to identify gemstones
- Explaining the GIA Colored Stone Grading System and evaluating gemstone quality
- Recognizing how quality, rarity and color affect value
- Determining how market factors affect gem value

What You Earn: Graduate Colored Stones Diploma

DIPLOMA REQUIREMENTS

📍 On Campus

Full-time program offered at GIA campuses worldwide
See pages 19, 22-23 for class schedule.

📖 Distance Education

A combination of eLearning courses offered through GIA in Carlsbad and instructor-led lab classes offered at GIA campuses and other locations worldwide (see *GIA Education Catalog* or GIA.edu for details).

Three eLearning courses

- Colored Stone Essentials
- Gem Identification
- Colored Stones

Two lab classes

- Colored Stone Grading lab – 3 days (or 6 nights when applicable)
- Gem Identification lab – 5 days (or 10 nights when applicable)

See pages 20, 22-23 for lab class schedules.

For eLearning and lab class descriptions, visit GIA.edu/gem-education/distance



Left: Garnet, pyrope-spessartine.
Center: Diopside (tashmarine). Right: Spinel

[Learn more at GIA.edu/GCS](http://GIA.edu/GCS)

Giuliana Loglisci

Bangkok Bound & Beyond



Rings from Giuliana's second collection, 'Fruit Cocktail'

Giuliana (Lucy) Loglisci is proof that ambition and perseverance can take you anywhere. Born in Matera, a charming little village in southern Italy, Giuliana worked at the jewelry store her family has owned since 1899. But colored gems were her passion, so she enrolled at GIA in Bangkok and earned her GIA Graduate Gemologist (GG) diploma. This vibrant city turned out to be the perfect place to start a business and build a life.

Why Study in Bangkok?

Bangkok is a center for the colored gemstone business. I wanted to practice what I was studying, and planned to go to markets and gem shops to test what I learned in class. I also wanted to discover a culture that was completely different from mine.

GIA Experience

The GG program provided me the foundation to succeed in this industry, and gave me the ability to determine the quality of diamonds and colored gemstones I buy for my jewelry line. It was a great experience and I met a lot of extraordinary people. Some of them have become very good friends and professional associates. A class trip to Chanthaburi (about 100 miles east of Bangkok) was particularly memorable. I was surprised to see beautiful gems being sold on broken tables in the street and in offices without doors.

Starting a Business

Upon completing my studies at GIA, my plan was to return to Italy and work in the family business. However, I realized that I had the opportunity to explore other parts of the industry. I worked briefly for a gem company in Bangkok but I wanted to create something that reflected my style and creativity. So I launched *Lucy G. Jewelry*.



Bracelets with diamonds, sapphires, amethysts and tsavorite from the 'Colori Della Frutta' collection.

Giuliana Loglisci, GIA GG

Owner/Designer
Lucy G. Jewelry

Fun Facts:

Favorite gem: Paraíba tourmaline

Memorable Gem: A 55 carat unheated blue sapphire from Burma. I was amazed by its beauty.

Favorite Things: Nature and animals. I learned to play polo in Bangkok, which was amazing.

Bucket List: Safari and volunteering in an African village.

Nature as Inspiration

My first collection is *I Colori Della Frutta* (Colors of Fruit). The style is eccentric and sophisticated, and lets the wearer easily mix and match rings, earrings and necklaces. Each piece is made of 9K white gold, diamonds, and captures the bright and refreshing colors of fruit with rubies, colored sapphires, amethyst, tsavorite and Paraíba tourmaline.

Bangkok's Allure

Starting a business in Bangkok is a lot easier than in Italy. Because it's a jewelry manufacturing capital, I can easily follow the production of a piece of jewelry from start to finish. That lets me ensure its quality. The craftspeople share their knowledge with me, and I share what I learned at GIA.



Giuliana talks more about her time at GIA in Bangkok and starting her own business at GIA.edu/giuliana-loglisci

Melee

Building Blocks of Contemporary Design

An important element of the gem and jewelry industry, melee can create a modern look and versatile design patterns. Designers need to know about it, and so do professionals all along the value chain.

GIA defines melee (pronounced meh-lee) as small diamonds and gemstones weighing less than 1/5 carat (ct), but size ranges vary from country to country and from one segment of the trade to another. Melee are typically cut into a round shape. New design and manufacturing technology is enabling more ornate and complicated jewelry that is in high demand by consumers.

Melee are often used to enhance surrounding stones and to make decorative patterns. They are also used to add sparkle to bracelets, necklaces, earrings, watches and other types of jewelry.

Melee color grades are usually not very detailed: "Face up white" (D-H colors) and "Top light browns" (M-O colors) are examples. Clarity grades are described similarly, such as "Eye clean" for no visible inclusions to the unaided eye.

The melee market is a high-volume business, and India is a major manufacturing hub. Melee are produced in high-tech factories, but cutting and sorting is still a labor-intensive process. The final product is typically sold in parcels of 100 carats or more to jewelry manufacturers (parcels can have over 400 melee). A single piece of jewelry can have dozens or even hundreds of melee stones.

Just like larger carat diamonds, the ability to detect simulants and synthetic (lab-grown) melee diamonds is important to the trade. In the past few years, companies have introduced automated systems like GIA's Melee Analysis Service, which cost-effectively analyzes and sorts natural diamond melee from synthetic.

Design and Engineering Considerations

Jewelry designers are using tiny cut melee stones to make a big statement. A halo set with melee can make an engagement ring's center stone appear larger. Decorative patterns of melee can create visual interest and scintillation. Colored gem melee can add realism or whimsy to large, curved surfaces.



There are approximately 9.50 ct of melee (791 round diamonds) in this bracelet. If the melee were not carefully matched for color, the bracelet would lose much of its elegant beauty. Courtesy: Uneek



Melee can be used to ornament a wide variety of contours and shapes such as on this extraordinary ring. Courtesy: JYE's International



The melee halo around this diamond solitaire engagement ring and in the shank help to make the center stone appear larger and provide additional sparkle. Courtesy: Blue Nile

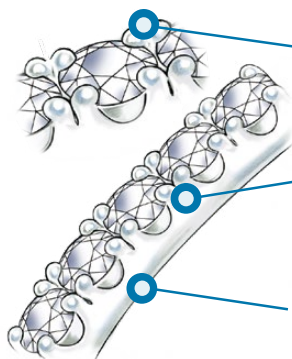
Using melee requires striking a balance between design and engineering. For example, placing melee in every available location on a brooch may impress customers, but if the piece is not designed for this type of application it may not be durable. Also, setting styles such as pavé, bead and channel require the removal of metal from jewelry. However, removing too much metal from an improperly engineered piece can result in structural weakness and failure during daily wear.

GIA Quality Assurance Benchmarks (QABs™) are criteria for evaluating the design, engineering and production of jewelry and are taught in the GIA Jewelry Design & Technology and Graduate Jeweler diploma programs. Here are some best practices you can use when working with melee:

- Melee of different sizes (even by 0.20 mm) may be noticeable to a customer. Selecting similar-size diamonds is important if uniformity is part of the design.
- All prong tips should be in solid contact with the gem's crown so there are no gaps between the prong and the stone. Prong tips that are not flush can snag on clothes, scratch skin and break.
- For pavé or bead and bright settings, use at least a 0.50 mm border to ensure structural integrity.
- For channel-set stones, build 1.00 mm walls on either side of the stones. Then bearings can be cut into the channel walls, so that approximately 10% of the diamond is in contact with the setting.
- Gold, silver and platinum have different properties. Be sure to account for the unique metallurgical properties of the metal you are using when setting melee.

Bead-Setting Diamonds in a Platinum Ring Shank

GIA.edu/QAB



Diamonds are equally spaced approximately 0.10 mm apart.

Bead prongs are proportionally sized, consistently rounded, and smooth so the ring is comfortable to wear.

To maintain shank strength, there are no openings or drill holes beneath the settings. The bearings support the diamonds above the shank surface to allow for easier cleaning.

Common Setting Styles for Melee



Bead and Bright

Small beads hold the stones in place in this popular style of bead setting. The bead setting is surrounded by a bright-cut wall that helps to reflect light into the diamond.



Channel

This is a technique where single or multiple stones are secured between two opposing walls with channel supports below. This setting does not have beads or prongs to secure the stone.



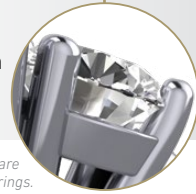
Pavé

Another bead-style setting, traditional pavé sets stones in three or more rows with hand-raised beads that hold the stone in place.



Prong

Metal supports that secure a gemstone and are part of a setting. Prong settings show more of the gemstone by using less metal than other setting styles.



Detailed insets are CAD renderings.

Whatever your ambition is in the gem and jewelry industry, understanding the basics of melee is essential. Learn more about melee and how to design with it at GIA.edu/design-with-melee



JEWELRY DESIGN & TECHNOLOGY

GIA Jewelry Design & Technology graduates often choose these careers:

- CAD/CAM Service Bureau Technician
- CAD Designer
- CAM Operator
- Jewelry Designer
- Product Developer
- Quality Assurance Specialist

Skills for Today and Tomorrow

The Jewelry Design & Technology diploma program covers topics essential to becoming a jewelry designer and CAD (Computer-Aided Design) technician, including being able to build a CAD model of jewelry to engineering specifications and understanding the challenges that come with its manufacturing. Instructors teach Design Elements and Principles and concept sketching to create attractive jewelry designs to present to a client prior to building the CAD model. Other topics covered include important jewelry design eras, understanding and applying motifs to jewelry and jewelry manufacturing methods.

The Jewelry Design & Technology diploma covers:

- Using fundamental design concepts, including texture, shape, form, balance, negative space, color and more.
- Applying the CAD model engineering concepts to make durable and comfortable jewelry that is long lasting.
- Creating, rendering and prototyping designs using CAM (Computer-Aided Manufacturing) software like Matrix, Rhinoceros, ZBrush and V-Ray rendering; and operating CAM hardware like a 3D printer.
- Learning about manufacturing processes for the creation of jewelry, like die-striking and casting.
- Designing and developing CAD models using the metrics of scale, proportion, and element relationships; and within the constraints of cost, time, size, style and manufacturing methods.
- Applying the GIA QAB™ (Quality Assurance Benchmarks) to jewelry designs to ensure proper engineering for manufacturing and wear. Developing digital and physical portfolios of class projects and custom designs that are ready for presentation to potential clients and employers, and displaying work in a final design exhibition.



See GIA Jewelry Design & Technology students showcase their portfolios at the final design exhibition at GIA.edu/jdtvideo

What You Earn: Jewelry Design & Technology Diploma

DIPLoma REQUIREMENTS

On Campus

Full-time class offered in Carlsbad and New York
See page 19 for program schedules.

[Learn more at GIA.edu/JDT](http://GIA.edu/JDT)



18K and 24K yellow gold, platinum, diamonds and yellow sapphires. Courtesy: Gift of Mark Patterson.



GRADUATE JEWELER

GIA Graduate Jewelers often choose these careers:

Bench Jeweler
 Business Owner
 Custom Order Jeweler
 Jewelry Buyer
 Jewelry Repair Technician
 Manufacturing Executive
 Quality Assurance Specialist
 Stone Setter



See GIA Graduate Jeweler students tackle the "Halo ring" project in 14K gold at GIA.edu/gjvideo



Design cast in 950 palladium and 18K yellow gold, then set with a tanzanite center stone and diamonds encircling the stone and the band. Courtesy: Michelle Loon

Create Jewelry With a Confident Hand and a Keen Eye

The GIA Graduate Jeweler diploma program is a hands-on learning experience that prepares you for a career as a bench jeweler, and covers jewelry-making skills valuable for jewelry designers, CAD modelers and sales professionals. You will work with gemstones and precious metals, taking projects from castings to finished, set, and polished pieces. Progressively difficult projects develop metal skills like polishing, filing, texturing, sawing and general torch skills.

The Graduate Jeweler diploma covers:

- Making and repairing jewelry using sustainable methods while in a quiet, clean and modern environment
- Setting a variety of stone shapes, including round brilliants, ovals and princess-cut stones, in mounting styles to include channel setting, bezel setting and prong setting, in sterling silver, white gold, yellow gold and platinum
- Determining when to alter, repair or reconstruct jewelry
- Performing the most common jewelry repairs, alterations, and reconstructions, such as sizing rings, rebuilding prongs, refinishing worn jewelry, repairing broken chains and strengthening old jewelry by installing new settings
- Applying both textured and polished finishes to jewelry surfaces on a variety of different metals
- Using fabrication and forging techniques and laser-welding technology for gold, silver and platinum
- Evaluating and improving workmanship by using GIA QAB™ (Quality Assurance Benchmarks)

What You Earn: Graduate Jeweler Diploma

DIPLOMA REQUIREMENTS

On Campus

Full-time class offered in Carlsbad

See page 19 for program schedules.



Learn more at GIA.edu/GJ

CCC COMPREHENSIVE CAD/CAM FOR JEWELRY

The Driving Force in Jewelry Design and Manufacturing Technology

This comprehensive seven-week course covers the skills necessary to become a CAD/CAM (Computer-Aided Design/Computer-Aided Manufacturing) technician. Skills taught include using CAD software (Rhino 3D and Matrix) to develop models, and V-Ray software for photorealistic renderings. Topics covered include subtractive and additive CAM machines, 3D-printed prototype models of selected designs and jewelry manufacturing techniques, GIA QAB™ (Quality Assurance Benchmarks) and GIA CAD Engineering Fundamentals.

COURSE AT A GLANCE

The Comprehensive CAD/CAM course will cover:

- Creating CAD models within the metrics of proper engineering, scale, proportion and element relationships
- Developing CAD models within the constraints of time, size, style and manufacturing methods
- Distinguishing between various CAD software, including Rhino and Matrix; and various CAM methods, such as 3D printing
- Modeling and rendering manufacturable pieces of fine jewelry using CAD/CAM and displaying them in a final CAD exhibition

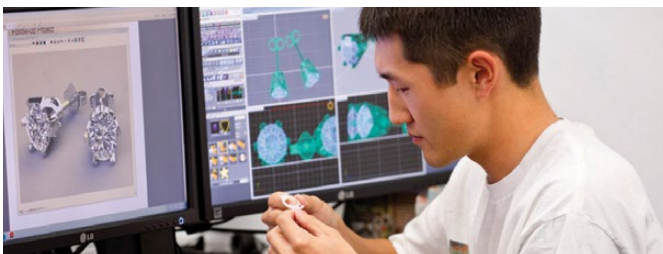
What You Earn: Comprehensive CAD/CAM for Jewelry Certificate

Full-time course offered in Carlsbad, New York and London

See pages 19, 21 for program schedules.

GIA Comprehensive CAD/CAM graduates often choose these careers:

- CAD Service Bureau Technician
- Jewelry CAD Technician
- Product Developer



JD JEWELRY DESIGN

Illustrate Your Way to a Successful Future

In this intensive nine-week course, instructors teach creative and technical skills needed to begin a career as a custom jewelry designer. Jewelry design theory helps students acquire a working knowledge of jewelry artistry. Skills covered include illustrating the shape, form and texture of metal; working with drafting tools; and rendering yellow and white metals, as well as a range of faceted and cabochon gemstones and pearls. Instructors show how to illustrate rings in different views and how to keep design ideas flowing. At the completion of this course, you will have a hand-developed portfolio of your work and a digital copy to show prospective employers and clients.

COURSE AT A GLANCE

The Jewelry Design course will cover:

- Learning rendering for yellow and white metals, as well as faceted and cabochon gemstones and pearls
- Illustrating rings and other pieces of jewelry
- Learning about sources for jewelry design inspiration and developing motifs to create jewelry objects
- Rendering jewelry designs using drafting tools for display as a participant in the final class design exhibition
- Creating a portfolio of class projects and custom designs that is ready for presentation to potential clients and employers

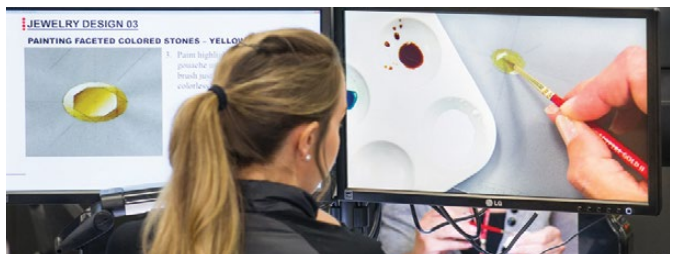
What You Earn: Jewelry Design Certificate

Full-time course offered at GIA campuses worldwide

See pages 19, 21-22 for program schedules.

GIA Jewelry Design graduates often choose these careers:

- Custom Designer
- Jewelry Designer
- Hand Renderer
- Sales Associate
- Jewelry Business Owner



Learn more at GIA.edu/CCC

Learn more at GIA.edu/JD

Veronica Eckert

Artistic Curiosity

Mexican-American designer Veronica Eckert, GIA Jewelry Design & Technology (JDT) graduate, has always sought to understand and explore, whether devouring science fiction books as a child, or creating an award-winning ring inspired by her “fascination with the universe.” Propelled by the desire to create and by the memory of her jeweler grandfather, Eckert immigrated to the United States and traded in a graphic design career to learn the art of jewelry making. She opened her Los Angeles studio in 2016.

Veronica's 'Trip to Saturn' platinum ring features a 12 mm Tahitian pearl, blue sapphires, aquamarines and diamonds.



Veronica Eckert, GIA JDT
Owner/Designer
Veronica Eckert Studio

Fun Facts:

Hobby: Hiking mountains

Favorite gem: Tanzanite

Favorite movie: *The Mist*, Stephen King

Favorite band: Empire of the Sun

Favorite book: *Manual of the Warrior of the Light* by Paulo Coelho

Early Experiments in Design

I dedicated a lot of time to working with my hands as a child – drawing, creating toys, beading, disassembling and reassembling electronics. That kind of curiosity is what guides us to become makers.

The Path to GIA

After training as a goldsmith, I learned about the influence that Computer-Aided Design/Computer-Aided Manufacturing (CAD/CAM) has had in the industry. That's when I heard about the JDT diploma program at GIA – the director and instructors spoke with me personally, and I knew the program would suit my needs and put me on the right track.

Professional Growth

GIA opened new possibilities for me. It helped me become further immersed in the jewelry design world, meet people in the field and mature as a professional.

Gaining In-Demand Skills

The JDT program helped me master the technology required to design jewelry in today's market. I used to hand-fabricate all of my pieces, but the CAD program helps me create more elaborate, complex designs while speeding up and simplifying the manufacturing process.



Follow Veronica's journey from student to CAD designer at [GIA.edu/veronica-eckert](https://www.gia.edu/veronica-eckert)

Generations of Jewelry

My daughter, Itzel Montserrat, became interested in jewelry while considering a career in fashion design. She earned her GIA Graduate Gemologist (GG) three years ago, and worked for Blue Nile before moving to Southern California to work in quality assurance for jewelry and watchmaker Christian Tse. My grandfather wasn't able to see me become a jewelry designer or my daughter become a GG, but his heritage and skills flow in our blood.

Final Thoughts

Jewelry design is a very competitive field, and the best way to keep up is to be innovative, staying true to your beliefs and your clients' needs.



In these earrings, Tahitian pearls play the part of Saturn. Diamond melee are its rings. Stars crown the creations.



Centuries of Opulence JEWELS OF INDIA

Large flawless diamonds from the Golconda region. Rich green emeralds from Colombia. Blood-red rubies from Burma. Only the best would do, set in the purest gold. For more than 5,000 years, jewelry has played an integral role in the history of India. Wars were fought and empires won and lost in pursuit of these riches.

In fact, it was a thirst for the fabled treasures of Northern India that drew Babur, founder of the Mughal Empire, from Central Asia in 1526. Lavishly adorned with the jewels they had won, received as “gifts” or created from the vast stores of gems and gold in their treasuries, the Mughals and other rulers of India continued to honor the religious, metaphysical and social importance of the precious materials and the forms they took.

Quality was paramount. Only the finest gems and purest gold would evoke maximum power to honor the gods and serve as talismans to ward off evil. As a result, gemologists were valued members of most royal courts in India. The Mughal Emperor Aurangzeb (reign 1658–1707) had three in his entourage: one to care for the gems, a second to estimate their value, and the third to grade them and detect treated gems or imitations. Gemological knowledge was passed from father to son for generations, but also taught in texts such as the notorious *Kama Sutra*.

Yet, because of cultural practices, relatively little of the historical jewelry exists, the gems and precious metals repurposed by

succeeding generations. It is for this reason that GIA is pleased to host the exhibit “Centuries of Opulence: Jewels of India” from October 13, 2017 through March 1, 2018, at its world headquarters in Carlsbad, California. This exhibit, on loan from a private collection, showcases 50 superb Indian jewels that span the period from the 17th to 20th centuries, including several items from the magnificent Mughal Empire. In addition to examining the religious and cultural symbols intrinsic to these exquisite pieces, it explores the original sources of the fine gems decorating them, such as emeralds from Colombia and spinels and rubies from Afghanistan, Tajikistan and Myanmar (Burma).



MAHARAJA OF PATIALA

Sir Yadavindra Singh, Maharaja of Patiala, is seen here wearing a fortune in spectacular jewelry, including the two diamond necklaces that Cartier created for his father, Sir Bhupinder Singh, in 1928. Photo reprinted with permission from the Cartier Archives, ©Cartier.

GREEN IS A POTENT LIFE FORCE IN INDIA.

Historically, the most coveted green gem was emerald, the vibrant green variety of the mineral beryl. Early emeralds were brought primarily from Egypt's legendary "Cleopatra's mines," found in the hills inland from the Red Sea. But these stones were typically pale and heavily included.

Coincident with the rise of the Mughal Empire in the 1500s, Spanish soldiers in the New World conquered the warlike Muzo tribe and took control of their emerald mines in the lush green jungles of what is today Colombia. Galleons laden

with emeralds from the Muzo and later Chivor mines sailed the brutal Atlantic Ocean to Spain. The finest of these alluring green gems entered the Spanish king's coffers or were sold to Portuguese merchants, who carried them to India's coastal trading center of Goa—and on to the royal treasuries. Over time, emeralds were brought in from other countries, such as Afghanistan and Brazil, but none surpassed the finest emeralds from Colombia.



MUGHAL JADE TURBAN ORNAMENT

Reserved for the wealthiest and most powerful, this *jigha* ornament, designed to be tucked into the folds at the front of the turban, is one of the relatively few known to have been fashioned from jade. White jade, also known as "mutton fat" jade, was believed to ward off heart disease and high blood pressure. The *jigha* often takes the form of a feather (*kalgi*), and some early *jighas* had a small pocket (*parkhane*) in the back of the jewel into which heron feathers would be placed when it was worn.

Mughal Era • Deccan • 18th Century • Jade (Nephrite), Diamond, Spinel and Emerald in 22K Gold • 14 cm

HAND OF VISHNU

Fashioned from emeralds and diamond and set in enameled gold (left), this exceptional Hindu ritual artifact is engraved in Sanskrit on the back with devotional verses from the *Bhagavad Gita* in praise of Lord Krishna (right).

Maharashtra • 17th Century • Emerald and Diamond in 22K Gold • 14 x 8 x 1.5 cm



MUGHAL HORN PENDANT

This gold pendant features a 125 carat Colombian emerald engraved in Arabic with salutations of peace. Set with diamonds, Burmese rubies, emerald beads and dangling pearls, it was made for a ruler of the Kingdom of Mysore.

Mughal Era • Mysore • 18th Century • Emerald, Ruby, Diamond and Pearl in 22K Gold • 6 x 8.5 x 2 cm



ROYAL MANGA MALA

While a necklace exhibiting mango-shaped elements (a *manga mala*) is traditional in South India, a *manga mala* as elaborate as this one was worn only by those who could afford such a massive gem-set jewel. Note the stylized mangos around the collar of the necklace. Its pendant represents the mythical two-headed bird (*gandaberunda*) that was the emblem of Mysore's Wadiyar royal family. There is elaborate repoussé detailing on the back.

Mysore • 19th Century • Diamond, Ruby and Emerald in 22K Gold • Necklace 79 cm long, Pendant 11 x 8.5 cm

RED A SYMBOL OF POWER, LIFE & YOUTHFUL ENERGY

Red. Blood. Without it no person can survive. This symbol of power, life and youthful energy was represented by two major gems in Indian jewelry: spinel and ruby. For much of India's history, these two very different gem minerals were almost interchangeable. The earliest magnificent red gemstones were spinels carried over treacherous mountains from Balakhshan (Badakhshan), an area that extended from today's northern Afghanistan into Tajikistan and gave spinels the name "balas rubies." Indeed, Great Britain's 170 carat Black Prince's "Ruby" and 352 carat Timur "Ruby," both believed to originate from Balakhshan, are spinels.

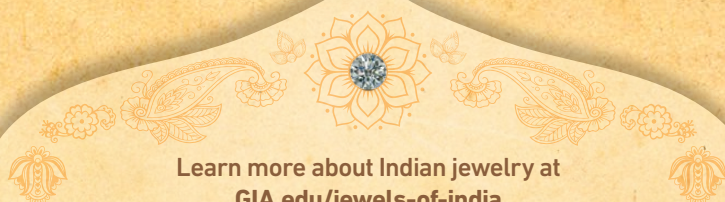
Rubies were also found in Afghanistan, but the main sources for this red variety of corundum during the Mughal Empire were the gem island of Ceylon (Sri Lanka) and the bountiful Mogok area of Burma (Myanmar). Most ancient Indian jewelry features the well-rounded, waterworn rubies found in these secondary, alluvial deposits that were simply polished to reveal their rich color.



KRISHNA PENDANT

The Hindu god Krishna is flanked by his two consorts, Rukmini and Satyabhama, in this *padakkam* (elaborate pendant). It is a true gem mosaic, with *kundan*-set rubies, emeralds and diamonds; the three faces are carved from emerald and ruby. This pendant was made to adorn a life-size temple statue of Lord Krishna.

South India • Early 20th Century • Diamond, Ruby, Emerald and Pearl in 22K Gold • 12 x 10 cm



Learn more about Indian jewelry at
GIA.edu/jewels-of-india

The special exhibit "Centuries of Opulence: Jewels of India" is on display at GIA in Carlsbad
 October 13, 2017 – March 1, 2018.



APPLIED JEWELRY PROFESSIONAL™

GIA Applied Jewelry Professional program provides ongoing education for professionals in careers like these:

Jewelry Assistant Manager
Jewelry Sales Professional
Pawnbroker
Television Shopping Host



The Front Line of the Jewelry Industry

The Applied Jewelry Professional™ (AJP™) program teaches topics critical to success on the job, including: diamonds, rubies, emeralds, sapphires and the 4Cs (clarity, color, cut and carat weight). Other topics include jewelry design, setting styles, jewelry care, the qualities of precious metals, common jewelry manufacturing methods and advice on running a retail jewelry store.

The Applied Jewelry Professional diploma covers:

- Describing how the 4Cs affect diamond value
- Examining the relationship between the size and weight of diamonds
- Exploring the differences between treated, synthetic and imitation stones in order to sell with full disclosure
- Understanding the steps of the jewelry sales process
- Translating jewelry design, style and manufacturing features into benefits
- Conveying the romance, lore and characteristics of the most popular colored gemstones

What You Earn: Applied Jewelry Professional Diploma

DIPLOMA REQUIREMENTS

Distance Education

Three eLearning courses offered through GIA in Carlsbad.

- Jewelry Essentials
- Colored Stone Essentials
- Diamond Essentials



Learn more at GIA.edu/AJP



Courtesy of Paula Crevoshay

Student Life

Enriching. Fun. Unforgettable.

CARLSBAD

NEW YORK

Like all our locations, GIA in Carlsbad and GIA in New York offer special charms that extend far past the classroom door. Here's a taste of what you'll find.



Carlsbad students take a field trip to a mine to see gems unearthed at the source.



Spontaneous fun. Grab a volleyball or ping-pong paddle after class on the Carlsbad campus and join a game.



Relax and get to know your classmates at organized activities throughout the year like SummerFest in Carlsbad.



Meet recruiters from top companies at GIA Gem & Jewelry Career Fair – yearly events in New York and Carlsbad.



Tour a New York jewelry manufacturing facility for a closer look at large-scale production.



Celebrate the holidays, like Halloween, with your classmates.



Gain insights at frequent lectures by industry VIPs.



Hone your interviewing skills and more at monthly guest speaking engagements.

No matter what campus you attend, you're sure to forge new friendships, develop a professional network that circles the globe and get an education that propels you into a bright future.

Learn more about GIA campuses in Carlsbad, New York and around the world at GIA.edu/admissions

2017 and 2018 U.S. Class Schedules

ON CAMPUS PROGRAMS

Tuition, books and material fees for 2018 programs, courses and classes may be different from 2017. Please refer to GIA.edu for the most up-to-date schedules, tuition and fees.

Unless otherwise noted, all classes are held at GIA facilities at the address shown on the back cover of the most current version of the *GIA Education Catalog* at GIA.edu/education-catalog

The start date shown for on-campus courses and programs is the mandatory orientation date.

GIA reserves the right to reschedule or cancel classes.

CARLSBAD, CA

GEMOLOGY

GEM 2500 Graduate Gemologist®

Jan 11-Jul 27
Feb 15-Aug 31
Mar 15-Sep 28
May 24-Dec 14
Jul 12, 2018-Feb 22, 2019
Sep 6, 2018-Apr 19, 2019
Oct 11, 2018-May 24, 2019

GEM 2200 Graduate Diamonds

Jan 11-Mar 9*
Feb 1-Mar 30
Feb 15-Apr 13*
Mar 15-May 11*
May 24-Jul 20*
May 31-Jul 27
Jul 12-Sep 7*
Sep 6-Nov 2*
Sep 20-Nov 16
Oct 11-Dec 14*

GEM 2300 Graduate Colored Stones

2017
Oct 30, 2017-Apr 6, 2018*

2018
March 12-Jul 27*
Apr 16-Aug 31*
May 14-Sep 28*
Jul 26-Dec 14*
Sep 10, 2018-Feb 22, 2019*
Nov 5, 2018-Apr 19, 2019*

JEWELRY MANUFACTURING ARTS

JMA 3400 Jewelry Design & Technology

May 31-Dec 14
Jul 12, 2018-Feb 15, 2019

JMA 3300 Graduate Jeweler

Jan 11-Jul 20
May 13-Dec 14
Sep 6, 2018-Apr 12, 2019

JMA 370 Jewelry Design

Feb 1-Apr 6
Jul 5-Sep 7

JMA 400 Comprehensive CAD/CAM for Jewelry

Mar 15-May 4
Apr 26-Jun 15
Oct 11-Dec 7

NEW YORK, NY

GEMOLOGY

GEM 2500 Graduate Gemologist®

Jan 4-Jul 20
Mar 1-Sep 14
Apr 26-Nov 9
Jun 21, 2018-Feb 1, 2019
Jul 26, 2018-Mar 8, 2019
Aug 16, 2018-Mar 29, 2019
Oct 11, 2018-May 24, 2019

GEM 2200 Graduate Diamonds

Jan 4-Mar 2*
Feb 1-Mar 30
Mar 1-Apr 27*
Apr 5-Jun 1
Apr 26-Jun 22*
Jun 7-Aug 3
Jun 21-Aug 17*
Jul 26-Sep 21*
Aug 16-Oct 12*
Sep 6-Nov 2
Oct 11-Dec 14*

GEM 2300 Graduate Colored Stones

Jan 1-May 18
Mar 5-Jul 20*
Apr 30-Sep 14*
Jun 25-Nov 9*
Aug 20, 2018-Feb 1, 2019*
Sep 24, 2018-Mar 8, 2019*
Oct 15, 2018-Mar 29, 2019*

JEWELRY MANUFACTURING ARTS

JMA 3400 Jewelry Design & Technology

Sep 20, 2018-Apr 26, 2019

JMA 370 Jewelry Design

Jan 18-Mar 23
Apr 12-Jun 15
Jul 12-Sep 14

JMA 400 Comprehensive CAD/CAM for Jewelry

Jan 11-Mar 2
Mar 29-May 18
Jul 5-Aug 24
Oct 18-Dec 14

CLASS DURATION AND HOURS

Monday-Friday Day Classes

Schedules may vary depending on holidays, breaks or other events. For more detail visit:

Carlsbad: GIA.edu/carlsbad-class-duration-hours
New York: GIA.edu/new-york-class-duration-hours
or contact admissions@gia.edu for details.

Weekend and Night Classes

New York:

Monday-Thursday:
On-campus: 6:00 – 9:30 p.m.
Saturday: 8:00 a.m. – 4:00 p.m.



Spinel crystals
Courtesy: Bill Larson, Pala International

(N) = Nighttime; (S) = Saturday; (H) = Course includes both on-campus and self-paced study.

Class Duration: Please note class schedules may vary depending on holidays and breaks; please review the schedule carefully and plan accordingly.

* Dates offered on a standby basis. Call for availability. You will be placed on a waiting list until 30 days prior to the start of your program or class when GIA can confirm your space availability. Schedules are subject to change without notice. For a current schedule, visit GIA.edu/schedules. Contact GIA Admissions in Carlsbad or New York to confirm availability and for additional information and details.

2017 and 2018 U.S. Class Schedules

LAB CLASSES AND STUDENT WORKROOMS

CARLSBAD, CA

GEMOLOGY

GEM 220L Colored Stone Grading

2017

Nov 6-8

2018

Jan 22-24

Apr 16-18

Jun 25-27

Sep 24-26

Nov 5-7

GEM 230L Diamond Grading

2017

Nov 13-17

2018

Jan 8-12

Apr 2-6

Apr 23-27

May 2-6

Jun 11-15

Sep 10-14

Oct 22-26

Nov 12-16

GEM 240L Gem Identification

2017

Oct 30-Nov 3

2018

Jan 15-19

Apr 9-13

Jun 18-22

Sep 17-21

Oct 29-Nov 2

GEM 149L Pearl Grading

2017

Nov 9

2018

Jan 25

Apr 19

Jun 28

Sep 27

Nov 8

STUDENT WORKROOM

Available daily, Monday-Friday, 9:00 a.m. – 12:00 p.m. and 1:00 p.m. – 4:00 p.m., on a first-come, first-served basis for up to eight students.

Fees are \$35 for half day and \$70 for full day. No fees for exams.

For a complete list of Student Workroom prerequisites, services, and additional details, visit GIA.edu.

To reserve a seat, call +1 800 421 7250 ext 4404, or outside the U.S. call +1 760 603 4404 or email lessons@gia.edu

JEWELRY MANUFACTURING ARTS

JMA 320L Basic Repair and Setting

May 7-11

Aug 6-10

JMA 340L Intermediate Repair and Setting

May 14-18

Aug 13-17

NEW YORK, NY

GEMOLOGY

GEM 220L Colored Stone Grading

2017

Nov 13-15

2018

Jan 22-24

Mar 12-14

Apr 9-11

May 7-9

Jun 11-19 (N)

Jun 25-27

Oct 1-3

Oct 13-27 (S)

Oct 29-Nov 6 (N)

Dec 10-12

GEM 230L Diamond Grading

2017

Dec 4-8

2018

Jan 8-12

Feb 26-Mar 2

Mar 5-20 (N)

Mar 26-30

Mar 31-Apr 28 (S)

Apr 23-27

Jun 11-15

Jul 16-20

Aug 6-21 (N)

Aug 13-17

Nov 5-9

Nov 26-30

GEM 240L Gem Identification

2017

Nov 6-10

2018

Jan 15-19

Mar 5-9

Apr 2-6

Apr 30-May 4

Apr 30-May 15 (N)

Jun 18-22

Jul 14-Aug 11 (S)

Sep 24-28

Sep 24-Oct 9 (N)

Dec 3-7

GEM 149L Pearl Grading

2017

Nov 16

2018

Jan 25

Mar 15

Apr 12

May 10

Jun 28

Oct 4

Dec 13

STUDENT WORKROOM

Monday-Friday, 9:00 a.m. – 12:00 p.m. and 1:00 p.m. – 4:00 p.m.

Fees are \$35 for half day and \$70 for full day. No fees for exams.

For a complete list of Student Workroom prerequisites, services, and additional details, visit GIA.edu.

To reserve a seat, call +1 800 366 8519, or outside the U.S. call +1 212 944 5900, or email nyworkroom@gia.edu

2017

Dec 4-8

Dec 11-15

2018

Feb 5-9

Feb 12-16

Apr 9-13

Apr 16-20

May 21-25

May 28-Jun 1

Jul 30-Aug 3

Aug 6-10

Dec 3-7

Dec 10-14

LAS VEGAS, NV

To register, and for class location, call American Gem Society at +1 702 255 6500 ext 1034 or email hcorbett@ags.org. Fees and enrollment details vary.

GEMOLOGY

GEM 220L Colored Stone Grading

Oct 10-12

GEM 230L Diamond Grading

Feb 26-Mar 2

Oct 15-19

GEM 240L Gem Identification

Mar 5-9

LAS VEGAS, NV

Seminar offered during JCK show.

GEMOLOGY

GEM 275L Gemology Seminars

Subject and dates to be announced.

TUCSON, AZ

Fees and enrollment details vary. Tucson classes are held at the Tucson Convention Center, 260 South Church, Tucson, AZ 86701.

GEMOLOGY

GEM 275L Gemology Seminar

Subject and dates to be announced.

GEM 275L Gemology Seminar

Subject and dates to be announced.

LAB CLASS HOURS

Day Classes

Carlsbad and New York:

Schedules may vary depending on holidays, breaks or other events. Please visit GIA.edu/class-duration-hours or contact admissions@gia.edu for details.

Night Classes

New York:

Monday-Thursday
6:00 p.m. – 9:30 p.m.

(N) = Nighttime; (S) = Saturday; (H) = Course includes both on-campus and self-paced study.

Class Duration: Please note class schedules may vary depending on holidays and breaks; please review the schedule carefully and plan accordingly.

* Dates offered on a standby basis. Call for availability. You will be placed on a waiting list until 30 days prior to the start of your program or class when GIA can confirm your space availability. Schedules are subject to change without notice. For a current schedule, visit GIA.edu/schedules. Contact GIA Admissions in Carlsbad or New York to confirm availability and for additional information and details.

2017 and 2018 International Class Schedules

ON CAMPUS PROGRAMS

Tuition, books and material fees for 2018 programs, courses and classes may be different from 2017. Please refer to GIA.edu for the most up-to-date schedules, tuition and fees.

Unless otherwise noted, all classes are held at GIA facilities at the address shown on the back cover of the most current version of the *GIA Education Catalog* at GIA.edu/education-catalog

The start date shown for on-campus courses and programs is the mandatory orientation date.

GIA reserves the right to reschedule or cancel classes.

BANGKOK GIAthai.net

GEMOLOGY

GEM 2500 Graduate Gemologist®

May 31-Dec 14

GEM 2200 Graduate Diamonds

2017

Oct 26-Dec 22

2018

Jan 25-Mar 23
May 31-Jul 26
Aug 9-Oct 5
Oct 25-Dec 21

GEM 2300 Graduate Colored Stones

Jan 11-Jun 1
Jul 26-Dec 14

Applied Jewelry Professional™ (Intensive)

Jan 15-19
Apr 23-27
Sep 24-28

JEWELRY MANUFACTURING ARTS

JMA 370 Jewelry Design

Feb 1-Apr 5
Jun 7-Aug 10

Oct 18-Dec 21 Quick Design

May 14-18
Aug 27-31

DELHI GIAIndia.in

GEMOLOGY

GEM 2500 Graduate Gemologist®

Apr 19-Nov 2

GEM 2200 Graduate Diamonds

Jan 18-Mar 16
Apr 19-Jun 15

GEM2300 Graduate Colored Stone

Jun 14-Nov 2

Applied Jewelry Professional™ (Intensive)

Mar 19-23
Sep 17-21

DUBAI GIAmideast.com

Classes will be held at Gold Tower, JLT Premises, unless otherwise mentioned.

GEMOLOGY

GEM 2200 Graduate Diamonds

Jan 4-Mar 1
Mar 22-May 17
Jun 21-Aug 16
Aug 23-Oct 18
Nov 1-Dec 27

Applied Jewelry Professional™ (Intensive)

Jan 28-Feb 1
Apr 22-Apr 26
Aug 12-Aug 16
Sep 30-Oct 4
Dec 9-Dec 13

HONG KONG GIAHongkong.com

GEMOLOGY

GEM 2500 Graduate Gemologist®

Jan 4-Aug 10
May 31-Dec 21

GEM 2200 Graduate Diamonds

Jan 4-Mar 9
Jan 2-Mar 26 (Cantonese) (M, Tu, Th) (H)
Mar 19-May 31 (Cantonese) (M, Tu, Th) (H)
Apr 9-Jun 11 (Cantonese) (M, W, F) (H)
Apr 9-Jun 11 (M, W, F) (H)
Apr 9-Jun 11 (Cantonese) (M, Tu, Th) (H)
May 31-Jul 27
Jun 25-Aug 24 (Cantonese) (M, W, F) (H)
Jul 9-Sep 4 (M, Tu, Th) (H)
Aug 6-Oct 22 (Cantonese) (M, Tu, Th) (H)
Oct 22-Dec 18 (Cantonese) (M, Tu, Th) (H)
Oct 25-Dec 12

GEM 2300 Graduate Colored Stones

Jan 2-Jul 10 (Cantonese) (M, Tu, Th) (H)
Mar 15-Aug 10
Apr 9-Sep 10 (Cantonese) (M, W, F) (H)
Jul 12-Dec 12 (Cantonese) (M, Tu, Th) (H)
Jul 26-Dec 21

JEWELRY MANUFACTURING ARTS

JMA 370 Jewelry Design

Mar 19-May 25
Aug 13-Oct 19
Oct 22-Dec 21

LONDON London.GIA.edu

GEMOLOGY

GEM 2500 Graduate Gemologist®

Jan 18-Aug 3
Mar 1-Sep 14
May 31-Dec 14
Sep 6, 2018-Apr 12, 2019
Oct 18, 2018-May 24, 2019

GEM 2200 Graduate Diamonds

Jan 18-Mar 16*
Mar 1-Apr 27*
May 31-Jul 27*
Sep 6-Nov 2*
Oct 18-Dec 14*

GEM 2300 Graduate Colored Stones

2017

Nov 9, 2017-Apr 13, 2018*

2018

Mar 15-Aug 3*
Apr 26-Sep 14*
Jul 26-Dec 14*
Nov 1, 2018-Apr 12, 2019*

JEWELRY MANUFACTURING ARTS

JMA 370 Jewelry Design

Jan 11-Mar 16
May 31-Aug 3
Oct 11-Dec 14

JMA 400 Comprehensive CAD/CAM for Jewelry

2017

Oct 26-Dec 15

2018

Mar 29-May 18
Aug 16-Oct 5

MUMBAI GIAIndia.in

GEMOLOGY

GEM 2500 Graduate Gemologist®

Jan 4-Jul 20
Apr 12-Oct 26
May 24-Dec 14
Jul 26, 2018-Feb 15, 2019

GEM 2200 Graduate Diamonds

2017

Oct 26-Dec 22
Dec 7, 2017-Feb 2, 2018

2018

Jan 4-Mar 2
Feb 1-Mar 30
Feb 22-Apr 20
Mar 22-May 18
Apr 12-Jun 8
May 3-Jun 29
May 24-Jul 20
Jun 28-Aug 24
Jul 26-Sep 21
Aug 30-Oct 26
Nov 8, 2018-Jan 4, 2019
Nov 29, 2018-Jan 25, 2019

GEM 2300 Graduate Colored Stones

2017

Nov 2, 2017-Mar 23, 2018

2018

Mar 1-Jul 20*
Jun 7-Oct 26*
Jul 19-Dec 14*
Sep 20, 2018-Feb 15, 2019*

JEWELRY MANUFACTURING ARTS

JMA 370 Jewelry Design

2017

Oct 26-Dec 29

2018

Jan 11-Mar 16
Apr 5-Jun 8
Jun 28-Aug 31
Nov 15, 2018-Jan 18, 2019

Applied Jewelry Professional™ (Intensive)

Feb 5-9
Mar 26-30
Oct 29-Nov 2
Nov 26-30

SHANGHAI GIAtaiwan.com.tw

GEMOLOGY

GEM 2500 Graduate Gemologist®

Mar 9-Sep 21 (Chinese)
Jul 6, 2018-Feb 1, 2019 (Chinese)

GEM 2200 Graduate Diamonds

2017

Nov 10, 2017-Jan 5, 2018 (Chinese)

2018

Mar 9-May 4 (Chinese)
May 11-Jul 6 (Chinese)
May 12-Jul 14 (Chinese) (S) (H)
July 6-Aug 31 (Chinese)

GEM 2300 Graduate Colored Stones

May 4-Sep 21 (Chinese)
Jul 21, 2018-Jan 26, 2019 (Chinese) (S) (H)
Aug 31, 2018-Feb 1, 2019 (Chinese)

JEWELRY MANUFACTURING ARTS

JMA 370 Jewelry Design

Oct 22-Dec 21 (Chinese)

(N) = Nighttime; (S) = Saturday; (H) = Course includes both on-campus and self-paced study.

Class Duration: Please note class schedules may vary depending on holidays and breaks; please review the schedule carefully and plan accordingly.

* Dates offered on a standby basis. Call for availability. You will be placed on a waiting list until 30 days prior to the start of your program or class when GIA can confirm your space availability. Schedules are subject to change without notice. For a current schedule, visit GIA.edu/schedules. Contact the campus to confirm availability and for additional information and details.

2017 and 2018 International Class Schedules

ON CAMPUS PROGRAMS (cont.)

SURAT GIAIndia.in

GEMOLOGY

GEM 2200 Graduate Diamonds

2017
Dec 7, 2017-Feb 2, 2018

2018
Mar 8-May 4
May 17-Jul 13
Aug 16-Oct 12
Nov 15, 2018-Jan 11, 2019

Applied Jewelry Professional™ (Intensive)

Feb 12-16
Oct 15-19

TAIWAN GIAtaiwan.com.tw

GEMOLOGY

GEM 2500 Graduate Gemologist®

2017
Nov 3, 2017-Jun 1, 2018 (Chinese)

2018
Mar 23-Oct 5 (Chinese)
Jul 6, 2018-Jan 25, 2019 (Chinese)
Nov 2, 2018-May 31, 2019 (Chinese)

GEM 2200 Graduate Diamonds

Mar 19-May 18 (Chinese) (M, W, F,) (N)
Mar 23-May 18 (Chinese)
Jun 2-Aug 4 (Chinese) (S) (H)
Jul 6-Aug 31 (Chinese)
Aug 27-Oct 19 (Chinese) (M, W, F,) (N)
Oct 27, 2018-Dec 29, 2019 (Chinese) (S)
Nov 2-Dec 28 (Chinese)

GEM 2300 Graduate Colored Stones

Dec 29, 2017-Jun 1, 2018 (Chinese)
May 18-Oct 5 (Chinese)
Aug 31, 2018-Jan 25, 2019 (Chinese)

Applied Jewelry Professional™ (Intensive)

Mar 5-16 (Chinese)
Aug 13-24 (Chinese)

JEWELRY MANUFACTURING ARTS

JMA 370 Jewelry Design

2017
Nov 13, 2017-Jan 12, 2018 (Chinese)

2018
Mar 19-May 18 (Chinese)
Jun 4,-Aug 3 (Chinese)
Oct 15-Dec 14 (Chinese)

LAB CLASSES AND STUDENT WORKROOMS

BANGKOK GIAthai.net

GEMOLOGY

GEM 220L Colored Stone Grading

Jan 22-24
Jul 9-11
Sep 17-19

GEM 230L Diamond Grading

Jan 8-12
Jun 25-29
Sep 3-7

GEM 240L Gem Identification

Jan 15-19
Jul 2-6
Sep 10-14

GEM 149L Pearl Grading

Jan 25
Jul 12
Sep 20

JEWELRY MANUFACTURING ARTS

Quick Design

May 14-18
Aug 27-31

BEIJING GIAtaiwan.com.tw

GEMOLOGY

GEM 220L Colored Stone Grading

Mar 31-Apr 2 (Chinese)

GEM 230L Diamond Grading

Mar 19-23 (Chinese)
Oct 28-Nov 1 (Chinese)

GEM 240L Gem Identification

Mar 25-29 (Chinese)

DELHI GIAIndia.in

GEMOLOGY

GEM220L Colored Stone Grading

Jan 15-17
Apr 2-4
Nov 26-28

GEM230L Diamond Grading

Jan 8-12
Mar 26-30
Apr 16-20
Jun 11-15
Sep 10-14
Nov 19-23
Dec 17-21

DUBAI GIAmideast.com

GEMOLOGY

GEM220L Colored Stone Grading

Mar 18-20
Jun 10-12
Nov 4-6

GEM230L Diamond Grading

2017
Dec 17-21

2018
Mar 4-8
May 20-24
Aug 19-23
Oct 21-Oct 25

GEM240L Gem Identification

Mar 11-Mar 15
Jun 3-Jul 7
Oct 28-Nov 1

GEM140L Pearl Grading

Mar 21
Jul 13
Oct 7

HONG KONG GIAhongkong.com

GEMOLOGY

GEM 220L Colored Stone Grading

Sep 19-21

GEM 230L Diamond Grading

2017
Nov 4-Dec 2 (Cantonese) (S)

2018
Jan 4-30 (Cantonese) (M, Tu, Th) (N)
Jun 4-Jul 5 (Cantonese) (M, Tu, Th) (N)
Oct 1-5
Nov 13-Dec 10 (M, Tu, Th) (N)

GEM 240L Gem Identification

Sep 24-28

GEM 149L Pearl Grading

Apr 18-20 (Cantonese) (W, F) (N)
Apr 25-27 (W, F) (N)
Jul 25-27 (Cantonese) (W, F) (N)
Jul 27
Dec 14

JOHANNESBURG

To register, call the Harry Oppenheimer Diamond Training School at +27 11 334 9003 or +27 11 334 8420, or email info@diamondtrainingschool.co.za. Fees and enrollment details vary.

SURAT GIAIndia.in

GEMOLOGY

GEM230L Diamond Grading

Feb 5-9
May 7-11
Jul 16-20
Aug 13-17
Oct 22-26
Nov 12-16

(N) = Nighttime; (S) = Saturday; (H) = Course includes both on-campus and self-paced study.

Class Duration: Please note class schedules may vary depending on holidays and breaks; please review the schedule carefully and plan accordingly.

* Dates offered on a standby basis. Call for availability. You will be placed on a waiting list until 30 days prior to the start of your program or class when GIA can confirm your space availability. Schedules are subject to change without notice. For a current schedule, visit GIA.edu/schedules. Contact the campus to confirm availability and for additional information and details.

2017 and 2018 International Class Schedules

LAB CLASSES AND STUDENT WORKROOMS (cont.)

LONDON London.GIA.edu

GEMOLOGY

GEM 220L Colored Stone Grading

Feb 26-28
Oct 8-10

GEM 230L Diamond Grading

Jan 8-12
Feb 19-23
Apr 16-20
Sep 24-28

GEM 240L Gem Identification

Jan 15-19
Apr 23-27
Oct 1-5

GEM 149L Pearl Grading

Mar 2
Oct 11

STUDENT WORKROOM

Please call for availability.
9:30 a.m.-4:30 p.m.

Jan 22-Feb 16
Apr 30-May 25
Aug 6-31

MUMBAI GIAindia.in

GEMOLOGY

GEM 220L Colored Stone Grading

Jan 22-24
Jun 25-27
Sep 10-12

GEM230L Diamond Grading

2017
Oct 23-27
Dec 4-8

2018

Jan 8-12
Jan 29-Feb 2
Feb 19-23
Mar 19-23
Apr 9-13
Apr 30-May 4
May 21-25
Jun 11-15
Jul 23-27
Aug 27-31
Oct 29-Nov 2
Nov 19-23
Dec 17-21

GEM240L Gem Identification

Jan 15-19
Jun 18-22
Sep 3-7

GEM140L Pearl Grading

Jan 25
Jun 28
Sep 13

STUDENT WORKROOM

Please call for availability.
10 a.m.-5 p.m.
Feb 5-16
Nov 12-23

RAMAT GAN crisrael@gia.edu

For a current schedule of lab classes
email crisrael@gia.edu or
call +972 3522 6749

SHANGHAI GIAtaiwan.com.tw

GEMOLOGY

GEM 220L Colored Stone Grading

May 17-19 (Chinese)
Nov 15-17 (Chinese)

GEM 230L Diamond Grading

May 5-9 (Chinese)
Nov 3-7 (Chinese)

GEM 240L Gem Identification

May 11-15 (Chinese)
Nov 9-13 (Chinese)

SHENZHEN GIAtaiwan.com.tw

GEMOLOGY

GEM 220L Colored Stone Grading

Apr 21-23 (Chinese)

GEM 230L Diamond Grading

Apr 9-13(Chinese)
Dec 3-7 (Chinese)

GEM 240L Gem Identification

Apr 15-19 (Chinese)

SINGAPORE GIAhongkong.com

GEMOLOGY **GEM 220L Colored Stone Grading**

2017
Dec 6-8

GEM 230L Diamond Grading

2017
Dec 18-22

GEM 240L Gem Identification

2017
Dec 11-15

GEM 149L Pearl Grading

2017
Dec 5

TAIWAN GIAtaiwan.com.tw

GEMOLOGY

GEM 220L Colored Stone Grading

2017
Oct 30-Nov 1 (Chinese)

2018

Jan 29-31(Chinese)
Oct 29-31 (Chinese)

GEM 230L Diamond Grading

Jan 15-19 (Chinese)
Mar 19-Apr 13 (Chinese) (M, W, F) (N)
Jun 2-30 (Chinese) (S)
Jun 4-8 (Chinese)
Aug 27-Sep 21 (Chinese) (M, W, F) (N)
Oct 15-19 (Chinese)
Oct 27-Nov 24 (Chinese) (S)

GEM 240L Gem Identification

Jan 22-26 (Chinese)
Jun 11-15 (Chinese)
Oct 22-26 (Chinese)

GEM 149L Pearl Grading

Mar 24 (Chinese) (S)
Oct 20 (Chinese) (S)

STUDENT WORKROOM

Please call for availability.

2017
Nov 6-10
Dec 11-15

2018

Jan 22-26
Feb 26-Mar 2
Mar 19-23
Apr 16-20
May 14-18
Jun 19-22
Jul 2-6
Aug 6-10
Sep 3-7
Oct 1-5
Oct 29-Nov 2
Dec 24-28

TOKYO giaeducationjapan@gia.edu

GEMOLOGY

GEM 230L Diamond Grading

Feb 19-23
Apr 23-27
Jun 25-29
Aug 27-31
Oct 15-19
Dec 10-14

GEM 130B Diamond Essentials (Intensive)

Feb 15-16
Apr 19-20
Jun 21-22
Aug 23-24
Oct 11-12
Dec 6-7

ATTENDING A GIA CAMPUS OUTSIDE THE UNITED STATES

To register in a program or lab class at a GIA location outside the U.S., contact the respective campus directly.

GIA program and lab class curricula are standard worldwide, but schedules and specific offerings may vary by location.

To enroll in Distance Education courses where materials are written in English, submit your application to GIA in Carlsbad. To enroll in a Distance Education course where materials are written in any other language, please contact the respective GIA campus.

Contact information for GIA campuses can be found at GIA.edu/locations

(N) = Nighttime; (S) = Saturday; (H) = Course includes both on-campus and self-paced study.

Class Duration: Please note class schedules may vary depending on holidays and breaks; please review the schedule carefully and plan accordingly.

* Dates offered on a standby basis. Call for availability. You will be placed on a waiting list until 30 days prior to the start of your program or class when GIA can confirm your space availability. Schedules are subject to change without notice. For a current schedule, visit GIA.edu/schedules. Contact the campus to confirm availability and for additional information and details.

Career Support

Beyond the Diploma

Whatever your professional goals, GIA is ready to assist students and alumni in their paths to success with a variety of career-focused programs and resources.

Career Services

GIA's Career Services team is ready to share invaluable advice and guidance to help you turn your skills into opportunities.

- Resume and job application assistance
- Interview preparation and practice

Contact your campus to learn more - GIA.edu/locations

GIA Job Seeker Handbook is your guide to applying for jobs in the gem and jewelry industry. Topics include:

- Resume and cover letter do's & don'ts
- Portfolio presentation recommendations
- Interview tips

Available at GIA.edu/job-handbook



GIA Career Fairs

Take the next step in your career at the gem and jewelry industry's premier recruiting event.

GIA Career Fairs attract dozens of recruiters from across the industry, including: Tiffany & Co., Saks Fifth Avenue, Gemvara, David Yurman and many more.

- Mid-career & entry-level opportunities
- One-on-one career coaching
- Discussion panels with VIPs
- Networking

2018 Career Fairs include London (April 23)
New York (July 30) and Carlsbad (October 5).

Find out more at GIA.edu/career-fair

GIA Jewelry Career Fair



Career Support

Beyond the Diploma

Whatever your professional goals, GIA is ready to assist students and alumni in their paths to success with a variety of career-focused programs and resources.

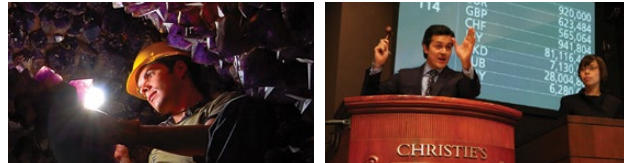
GIA Gem & Jewelry Career Center

GIA's online destination for finding gem and jewelry jobs.

- 100s of jobs across the industry – sales, design, research and more
- Find positions at large companies to local firms
- All levels – entry level to expert positions
- Research companies and jobs that interest you
- Create a custom profile to help you get noticed

Employers – Are you looking for top talent? Create a profile and post your open positions to get noticed by qualified candidates passionate about gems and jewelry.

Sign up now at
GIA.edu/gem-job



GIA Alumni Association

Member Benefits That Keep You Connected to GIA and the Industry.

- **NEW! GIA Alumni Member Logo** – A powerful way to promote your GIA education affiliation. The alumni logo is available to qualified alumni for use on business cards, websites and stationery. Email alumni@gia.edu for usage information.
- **GIA Alumni Online Directory** – Sign up so prospective clients can view your credentials and contact you.
- **GIA Alumni Membership Card, Window Decal and Business Card Holder** – Promote your GIA education.
- **GIA Insider** and **AlumConnect** – Free digital publications help you stay informed.

120,000+
ALUMNI
MEMBERS

65
CHAPTERS
AROUND THE GLOBE



**GIA ALUMNI
MEMBER**



Stay connected at GIA.edu/gia-alumni

Gemological Institute of America
The Robert Mouawad Campus
5345 Armada Drive
Carlsbad, CA 92008



GIA®

EDUCATION

Quarterly



2018 SYMPOSIUM
New Challenges.
Creating Opportunities.

October 7 – 9, 2018
Carlsbad, California
Hosted by GIA

Learn more and register at symposium.GIA.edu



[youtube.com/
officialgiachannel](http://youtube.com/officialgiachannel)



[facebook.com/
giaeducation](http://facebook.com/giaeducation)



[@GIAnews](https://twitter.com/GIAnews)



[linkedin.com/
company/gia](http://linkedin.com/company/gia)



[pinterest.com/
giapins](http://pinterest.com/giapins)



[GIA.edu/
subscribe](http://GIA.edu/subscribe)

TABLE OF CONTENTS