

*Latest Views
of
Johannesburg
& Environs.*

PUBLISHED BY ~
MENDELSSOHN & BRUCE LTD





64
Rox

55L
00056973

Dr John Muir,
Johannesburg, Transvaal,
Aug. 1899.



LATEST VIEWS

: : of : :

Johannesburg AND Environs.



Being Collotype Reproductions from Selected Photographs.







1. Birdseye View of a portion of Johannesburg.

from Hospital Hill.



2. The Law Courts, Government Square, Johannesburg.



Photo by J. Robertson, Pretoria,

THE PRESIDENCY, PRETORIA.

3. Government Buildings, Pretoria.
 - a. *General Joubert's Office.*



2. The Law Courts, Government Square, Johannesburg.



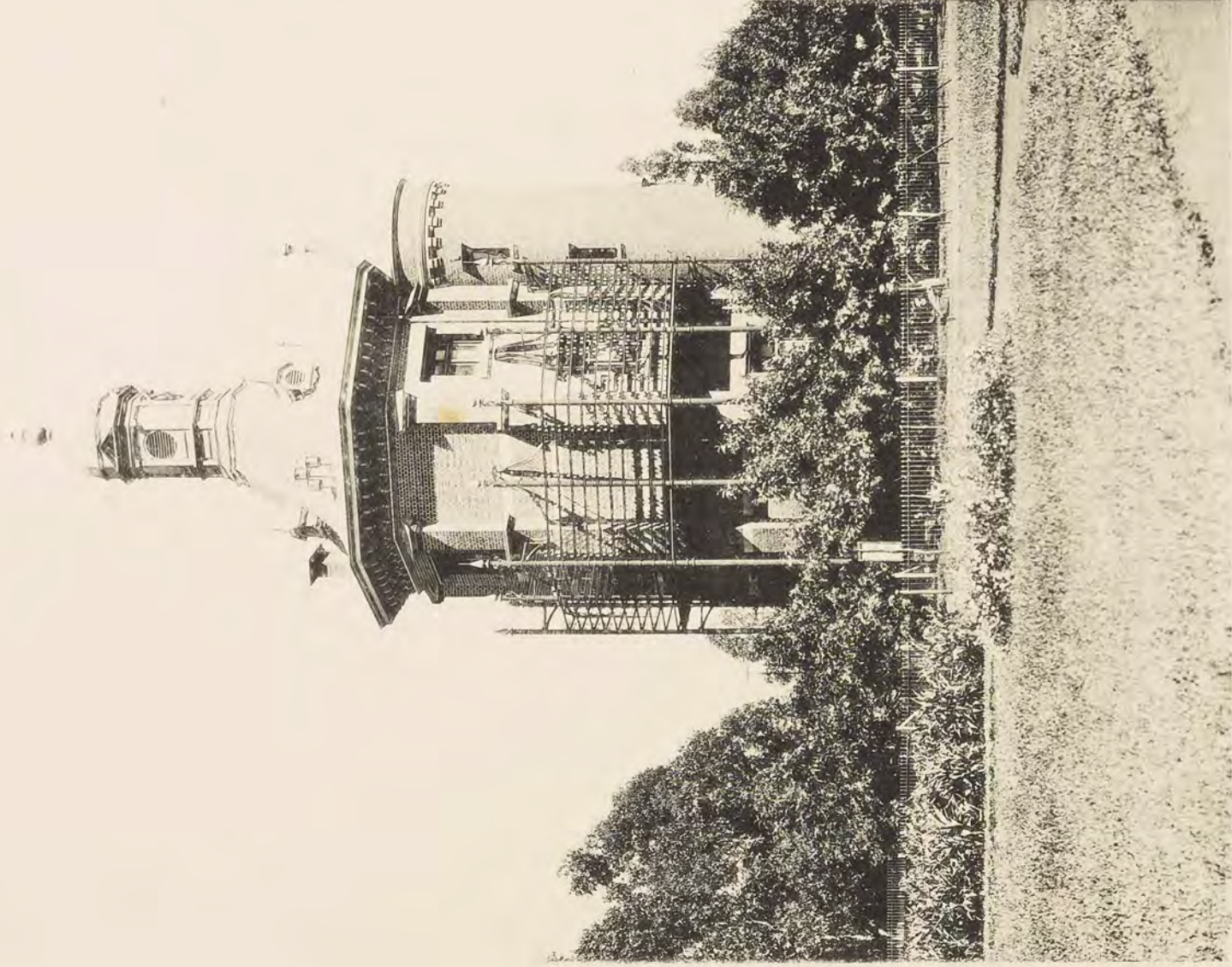
3. Government Buildings, Pretoria.
a. General Joubert's Office.



4. The Public Park, Pretoria.



5. The General Post Office, ~~Government~~ ^{Market} Square, Johannesburg.



6. The Telephone Tower, Johannesburg.



7. The Hospital, Johannesburg, facing North.



8. The Stock Exchange, Commissioner Street, Johannesburg.

National Bank

Locksteins.

{ Consolidated Gold Fields }
{ Reform Committee 1895. } Exchange.

Robinson Bank.



9. Between the Chains, showing a portion of the Stock Exchange.



10. The Rand Club, Commissioner Street.



11. The Grand National Hotel, corner of Rissik and **Pritchard** ~~Commissioner~~ Streets.

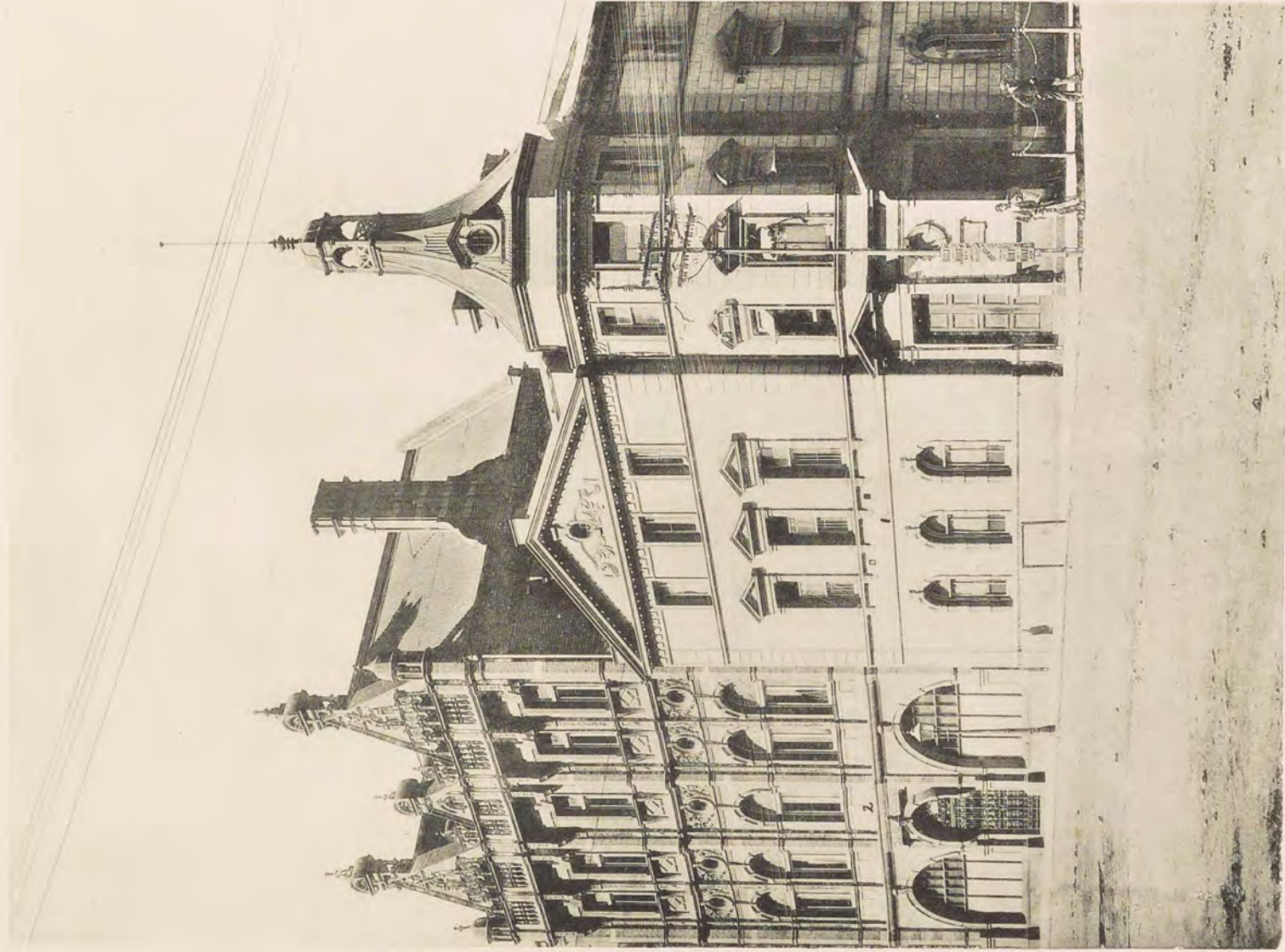


12. Market Square, South side, showing Ziman's Buildings, Chamber of Mines, and The Robinson Bank.

1

2

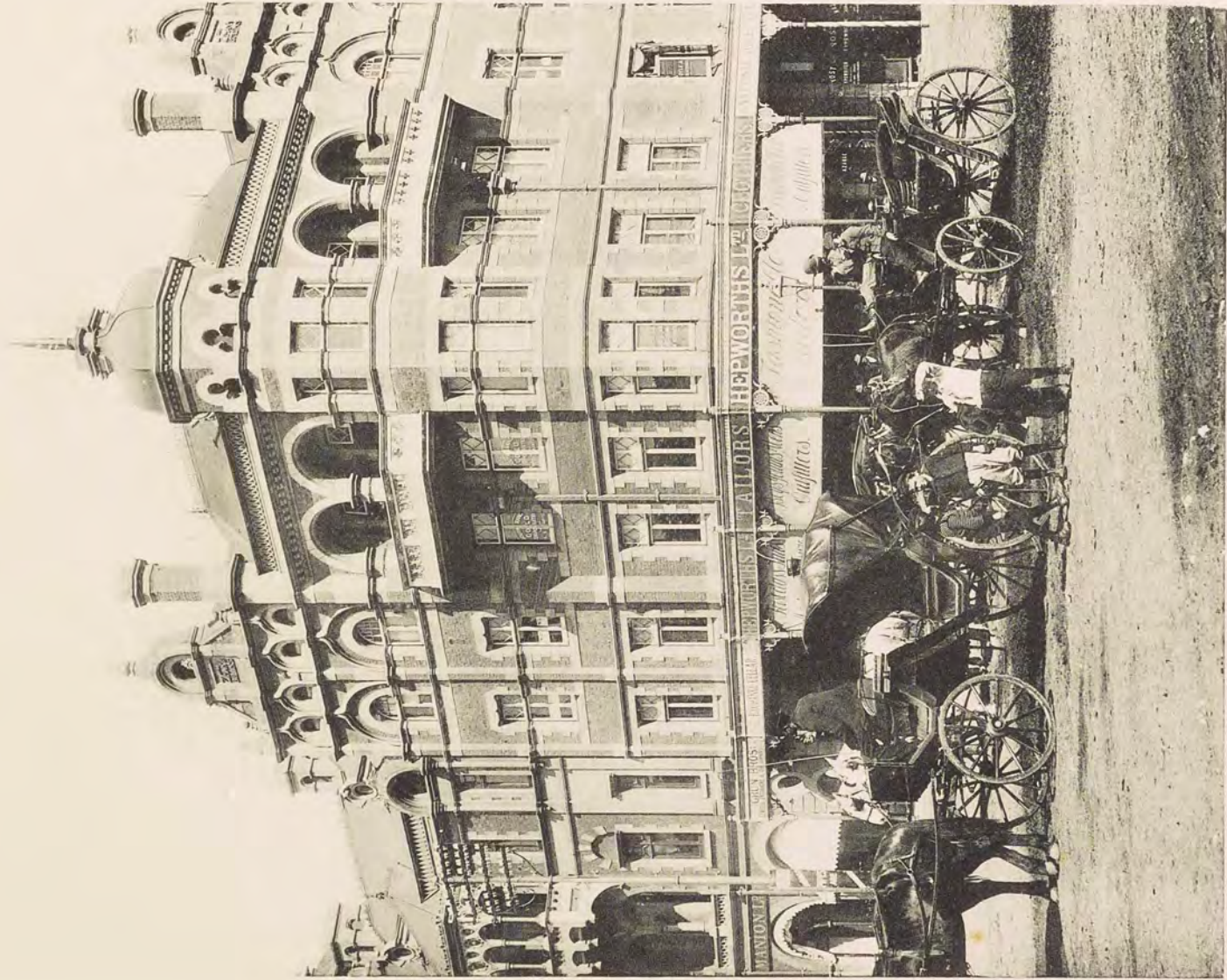
3



13. Market Square, South side, showing National Bank and Chamber of Mines.



14. The Market.



15. Corner of Market Square and Harrison Street.

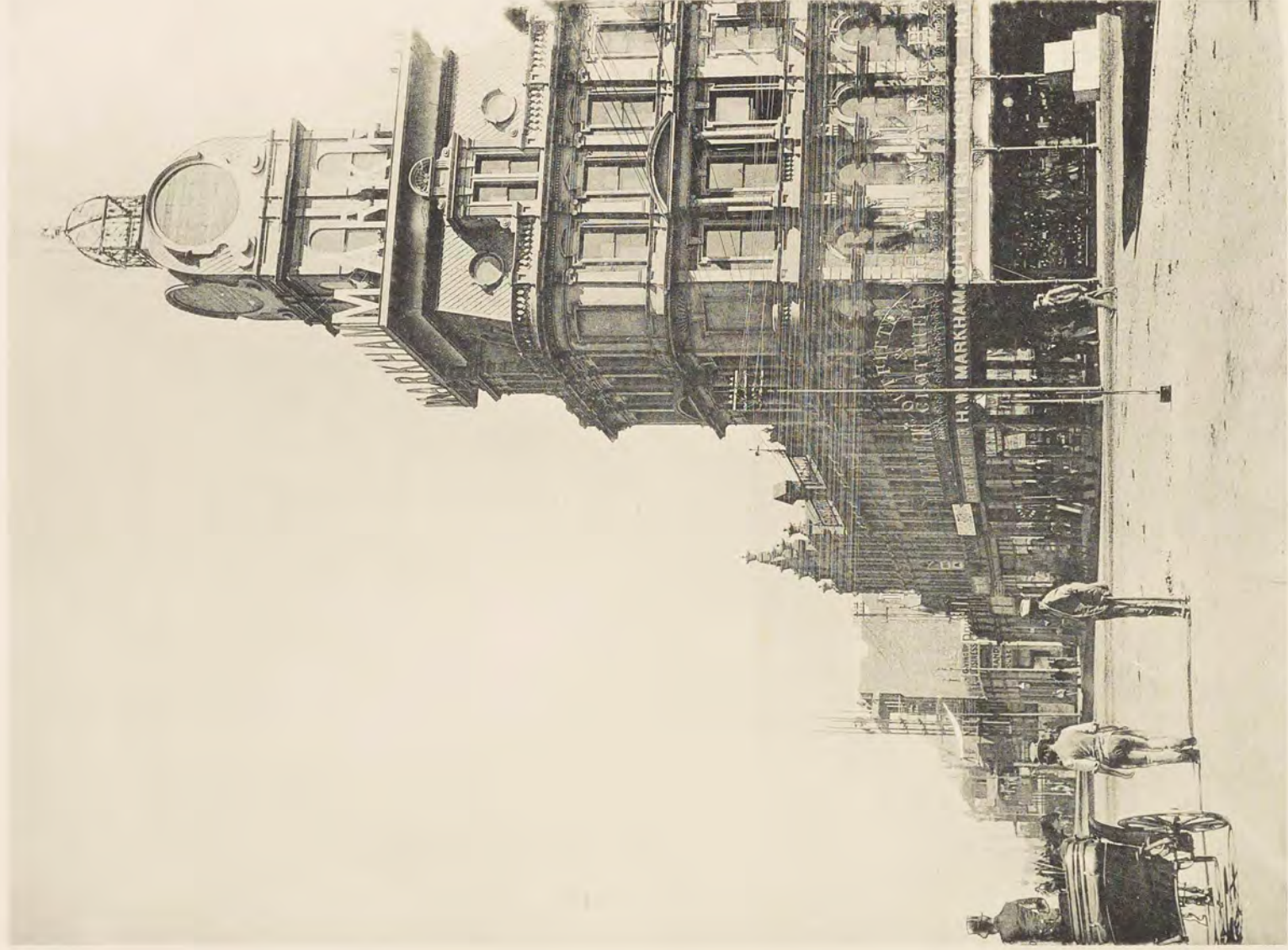


16. Joubert Street, looking South.

Mutual Bdgs.



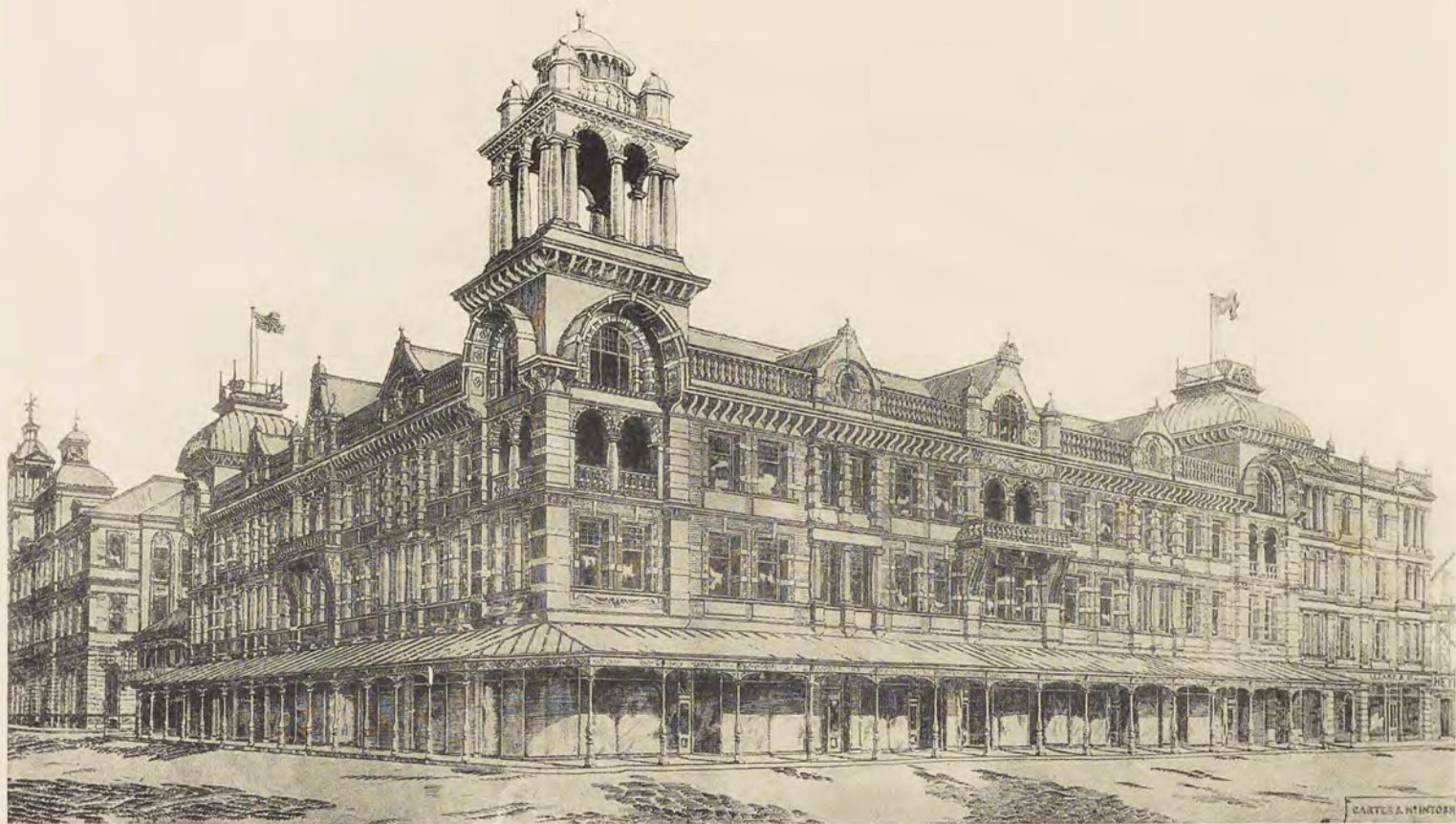
17. Commissioner Street.



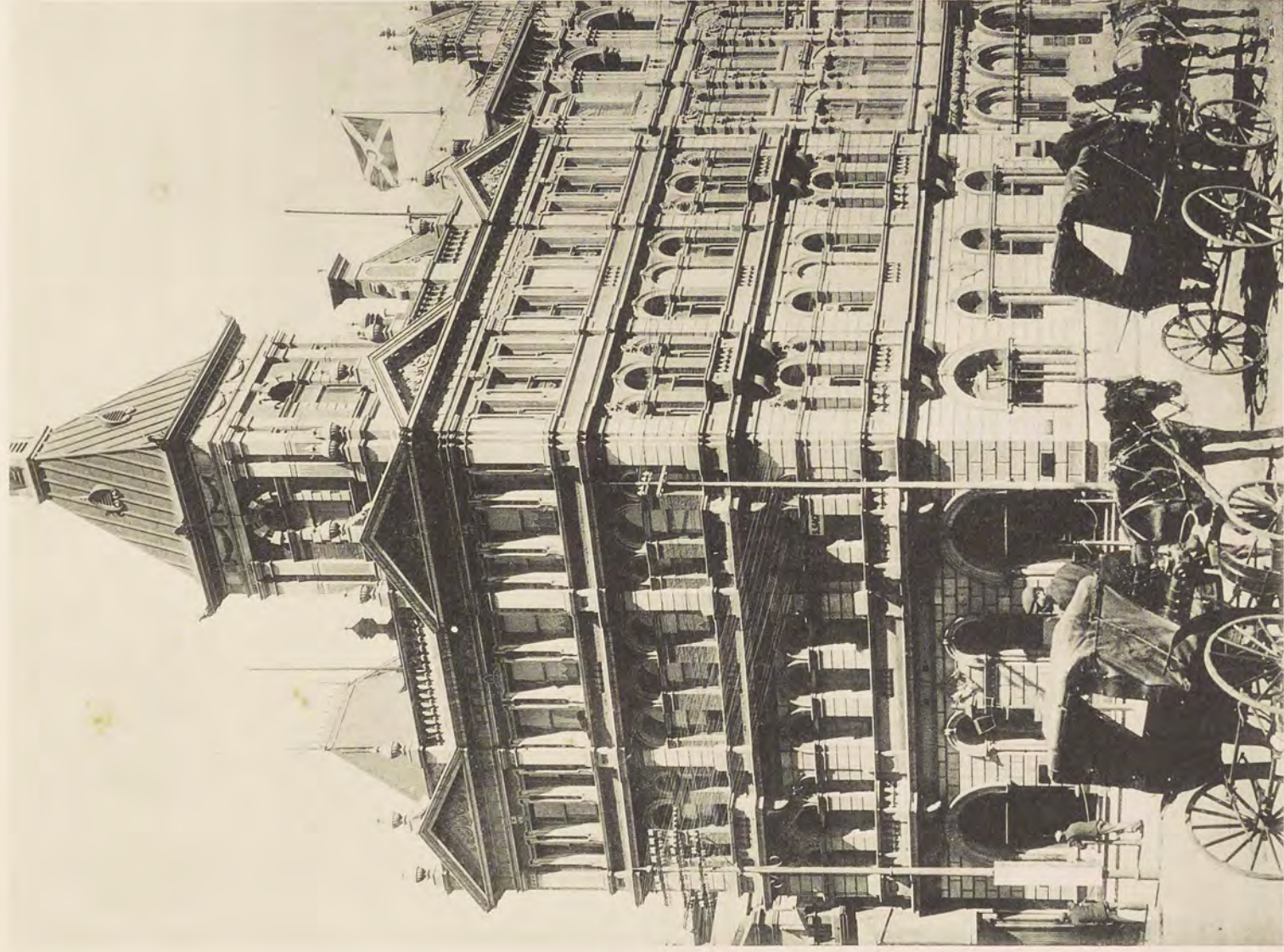
18. Pritchard Street, showing Markham's Tower.



19. Standard Buildings, President Street.



20. The "Standard and Diggers' News" Buildings, corner of Rissik and Commissioner Streets.



21. The Robinson Bank, Market Square and Simmonds Street.

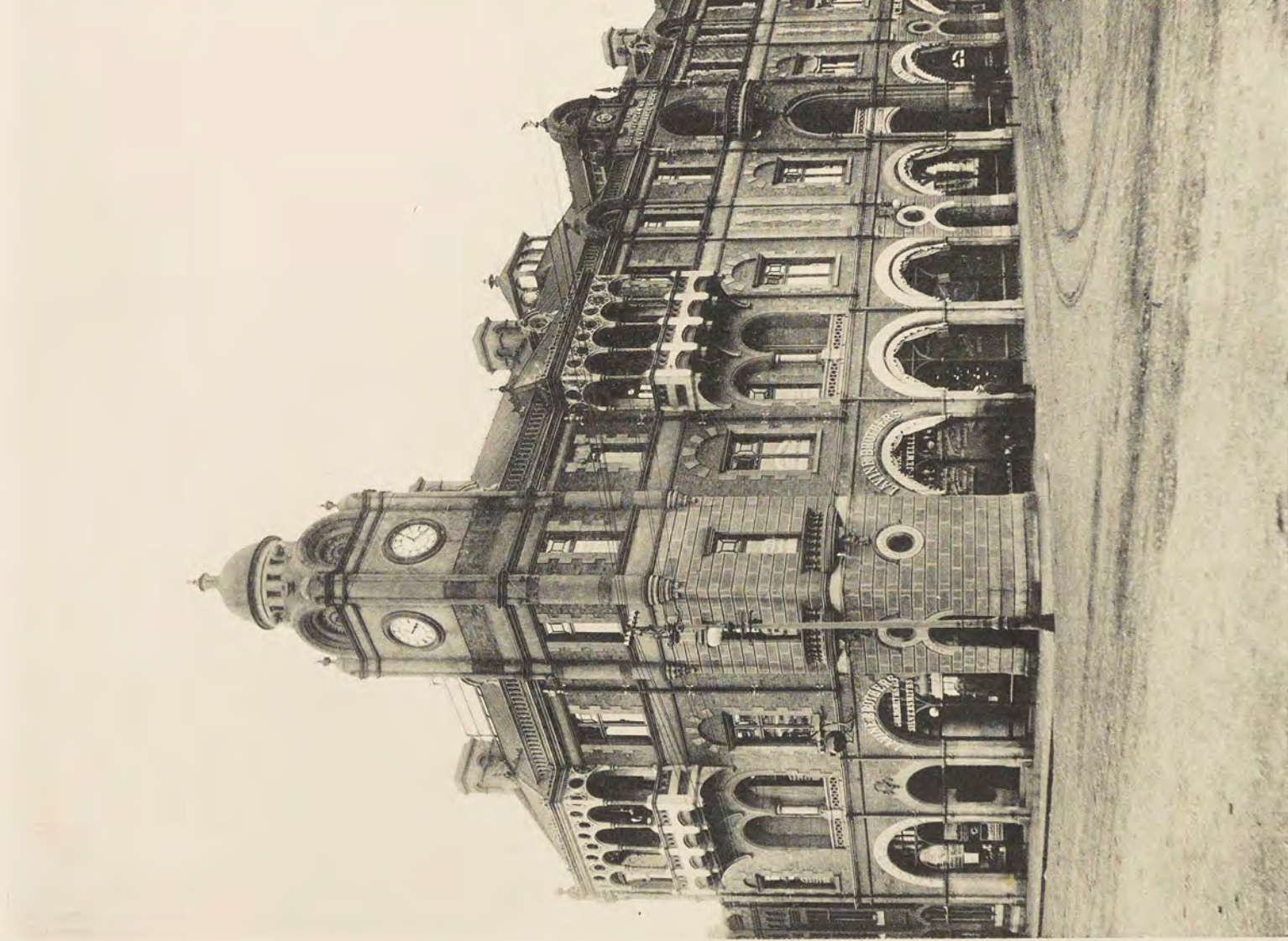
Library.



22. Pollock Buildings, Eloff Street, showing portion of New Library.



23. Mount's Bay House, corner of Eloff and Pritchard Streets.



24. The Mutual Buildings, corner of Commissioner and Harrison Streets.

Exchange.

Ecksteins.

Permanent Bdgs.



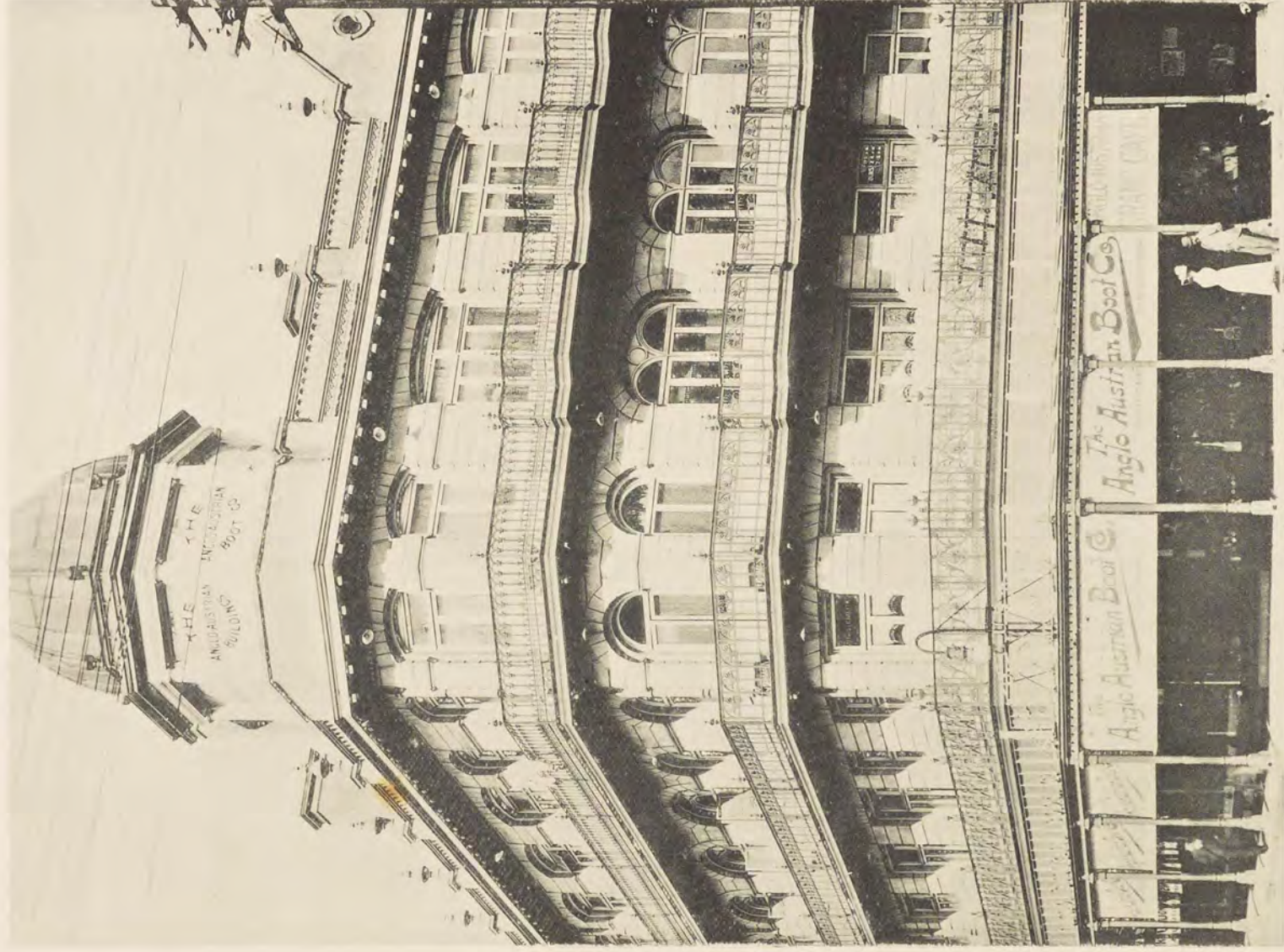
25. Commissioner Street, looking West.



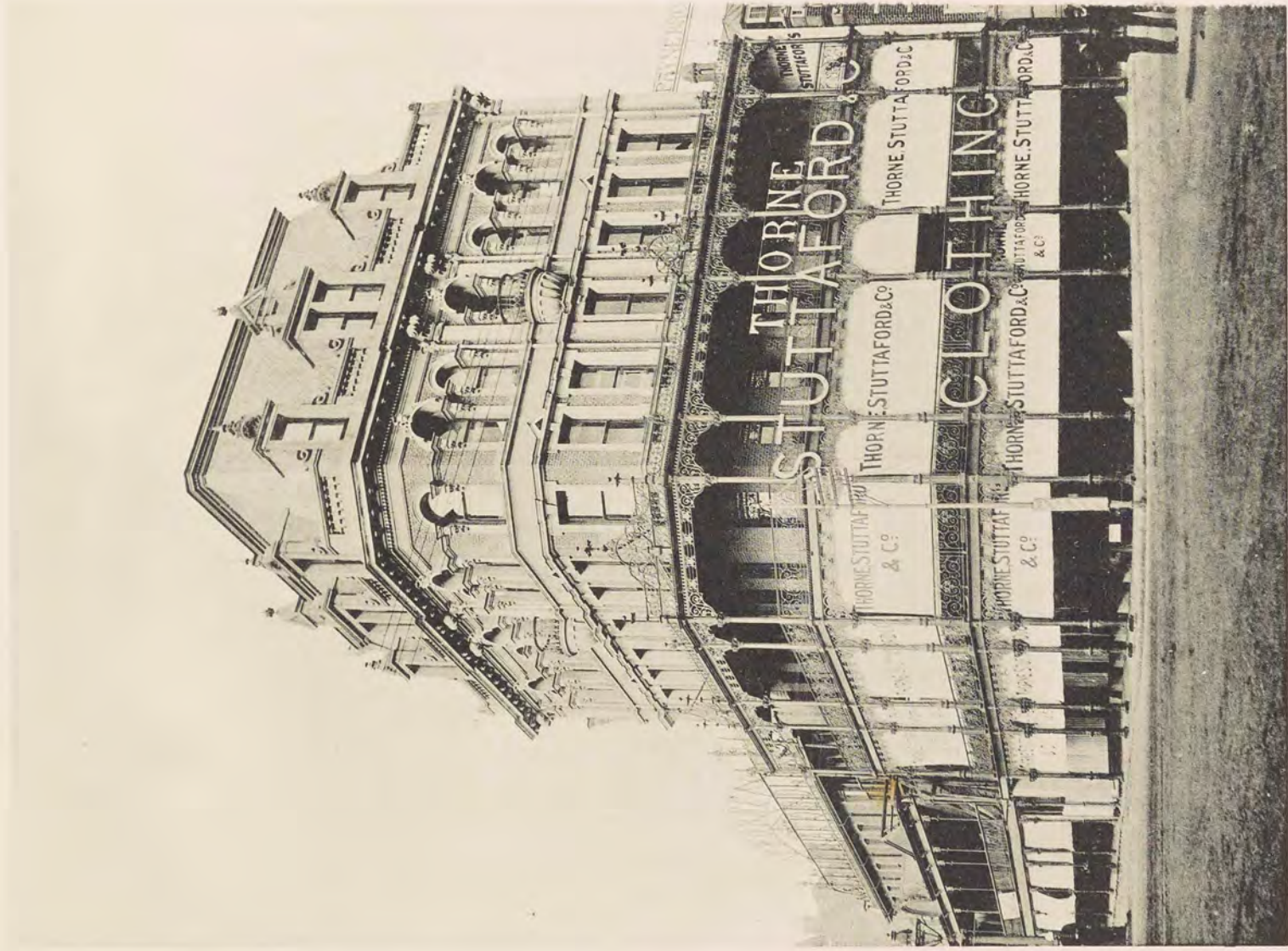
26. Commissioner Street, looking West.



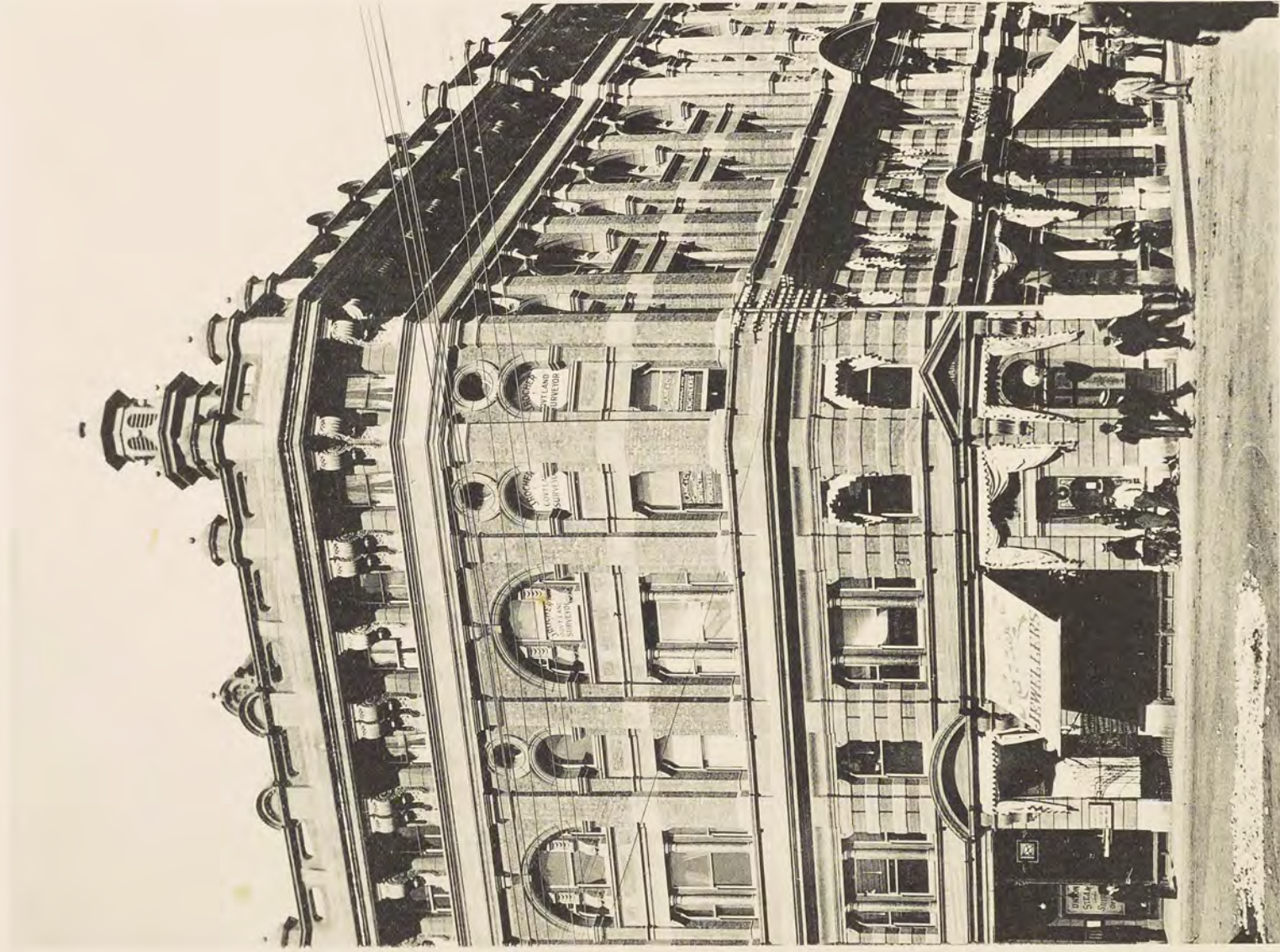
27. Pritchard Street, looking East.



28. The Anglo-Austrian Boot Co.'s Buildings, Pritchard Street.



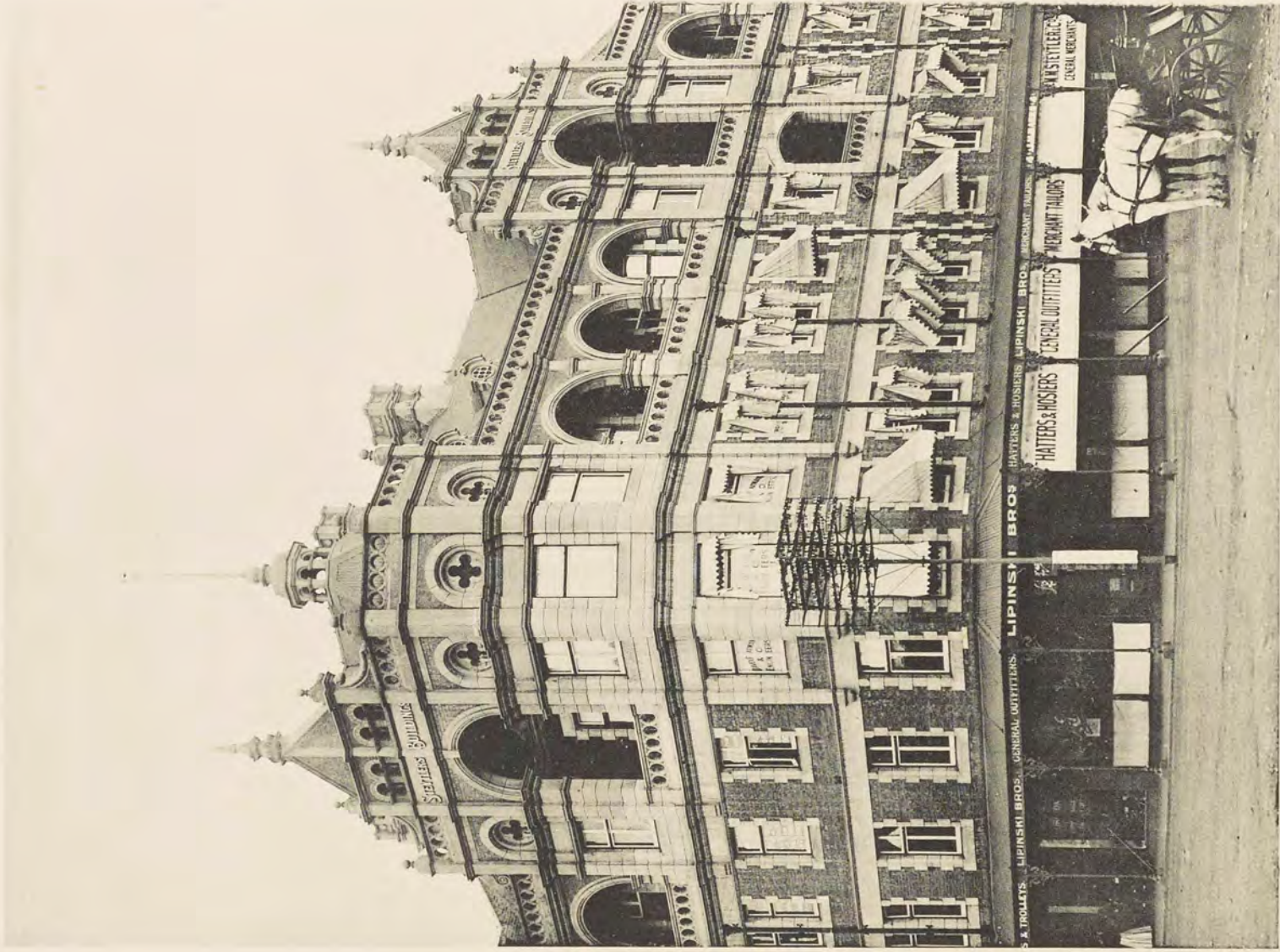
29. Thorne Stuttaford & Co.'s New Premises, corner of Rissik and Pritchard Streets.



30. Permanent Buildings, Commissioner Street.



31. Palace Buildings, corner of Rissik and Pritchard Streets.



32. Steytler's Buildings, corner of Loveday Street and Market Square.



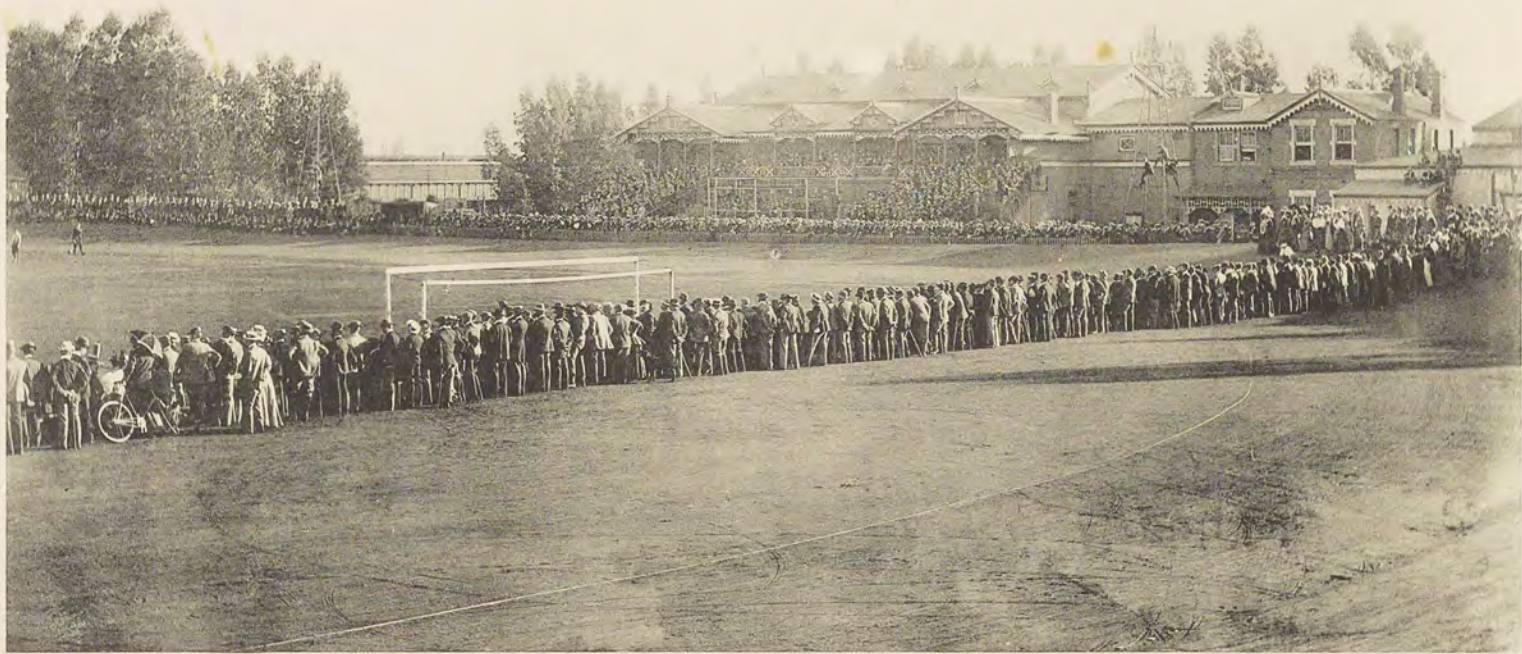
33. Joubert Park.



34. Joubert Park—the Fountains.



35. Auckland Park.



36. Grounds of Wanderers' Club; Football Match, London Corinthians *v.* Transvaal.



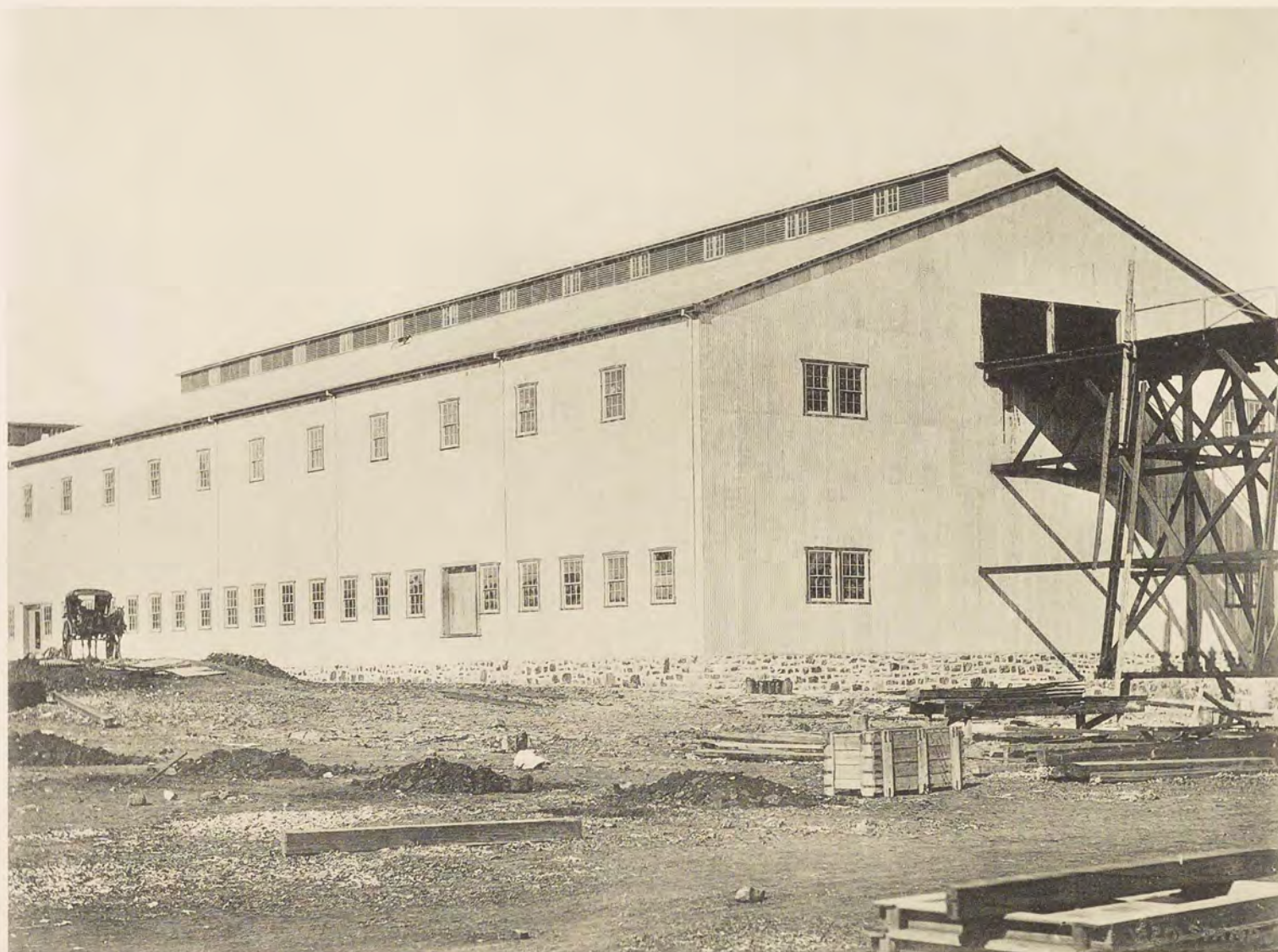
37. Park Railway Station, Johannesburg.



38. The Main Reef Road.



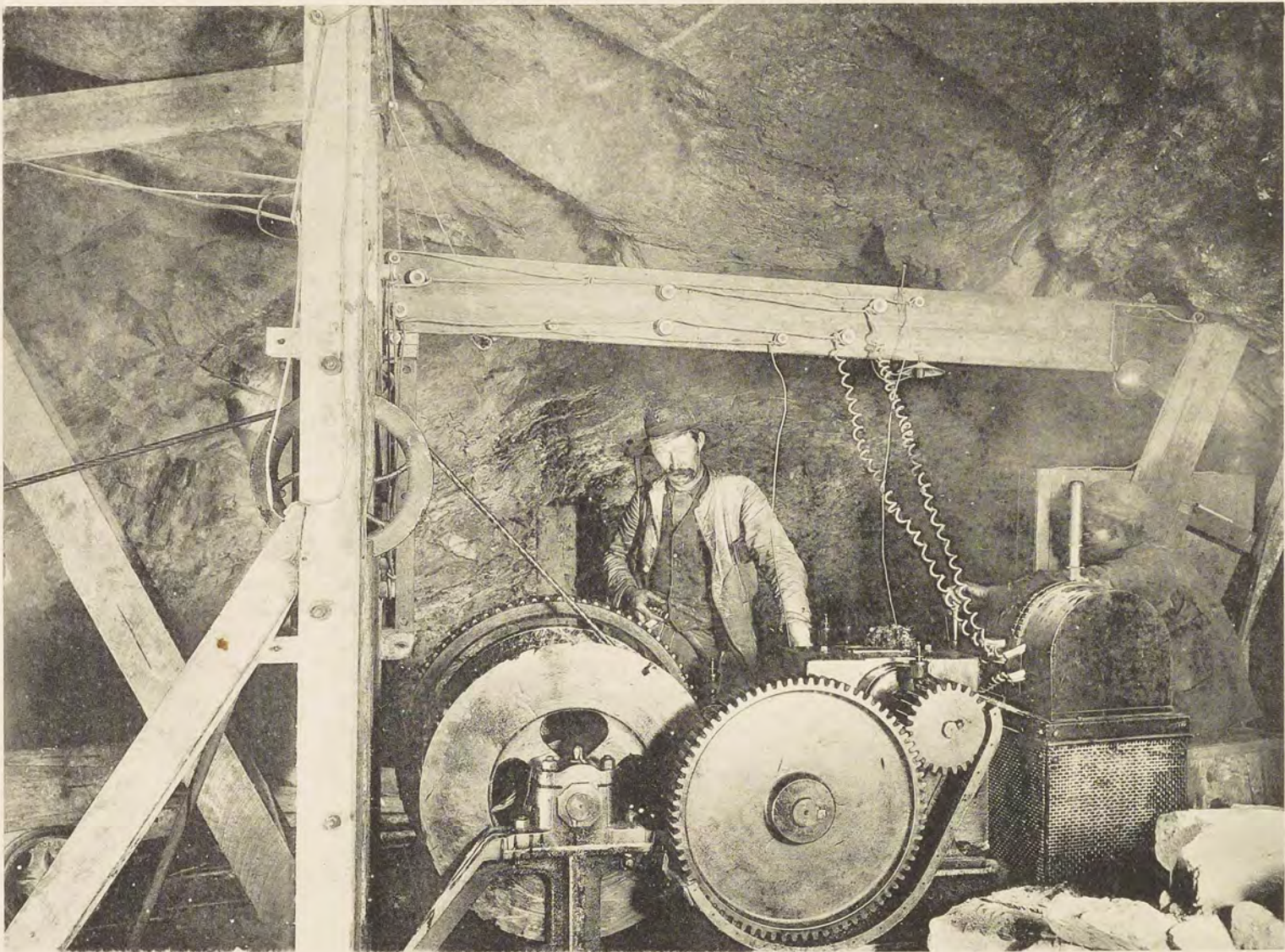
39. Surface Works, Village Main Reef Mine.



40. The 220-Stamp Mill, Driefontein—Angelo Mine, East Rand Proprietary.



41. Precipitation House, Simmer and Jack Mine.



42. Electric Hoist on Winze, Simmer and Jack Mine.



43. New Headgear, Simmer and Jack Mine.



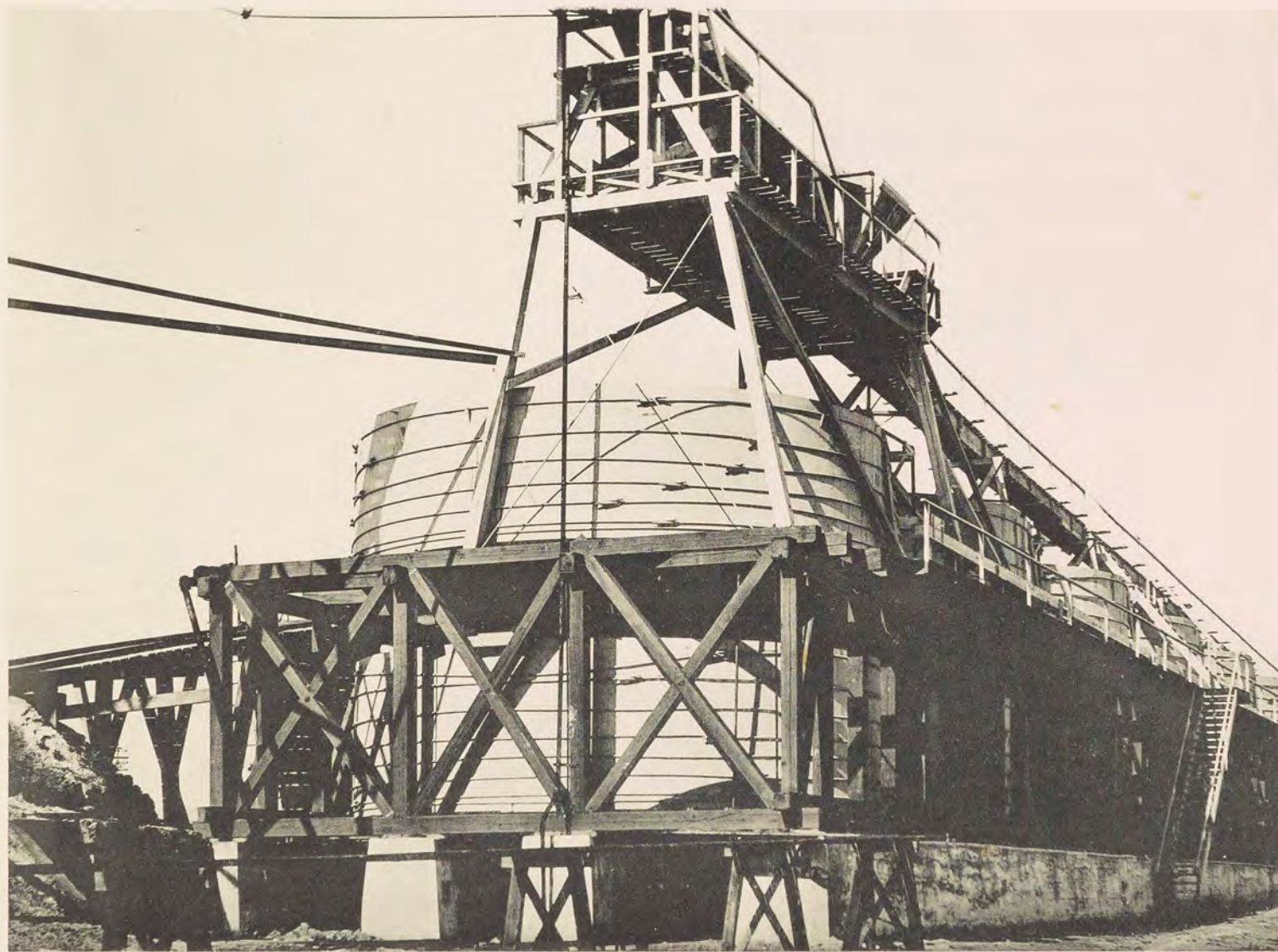
44. Battery and Surface Works, the Jumpers Mine.



45. Headgear and Surface Works, the New Primrose Mine.



46. Headgear and Surface Works, the Witwatersrand Mine.



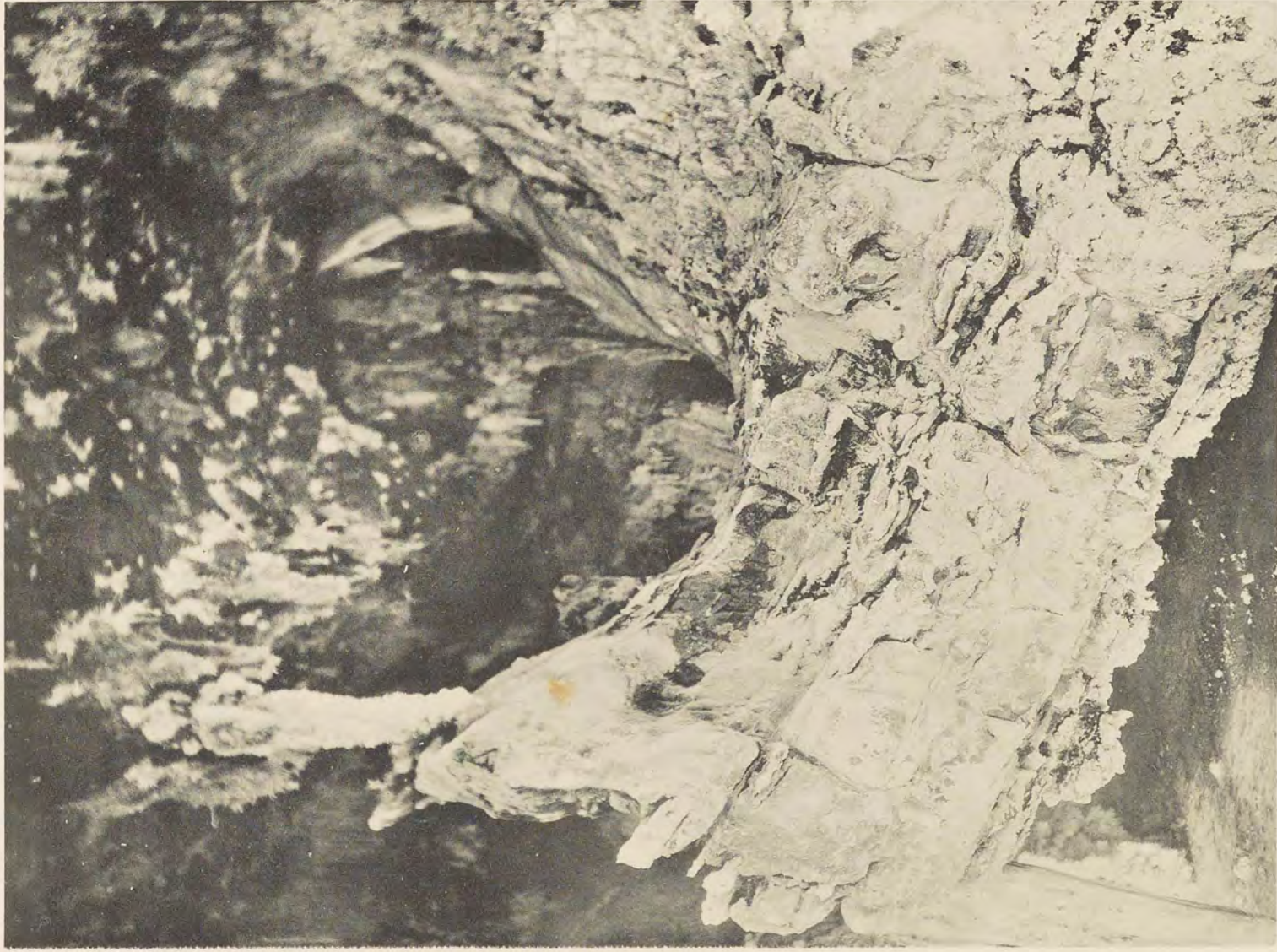
47. Cyanide Works, the New Croesus Mine.



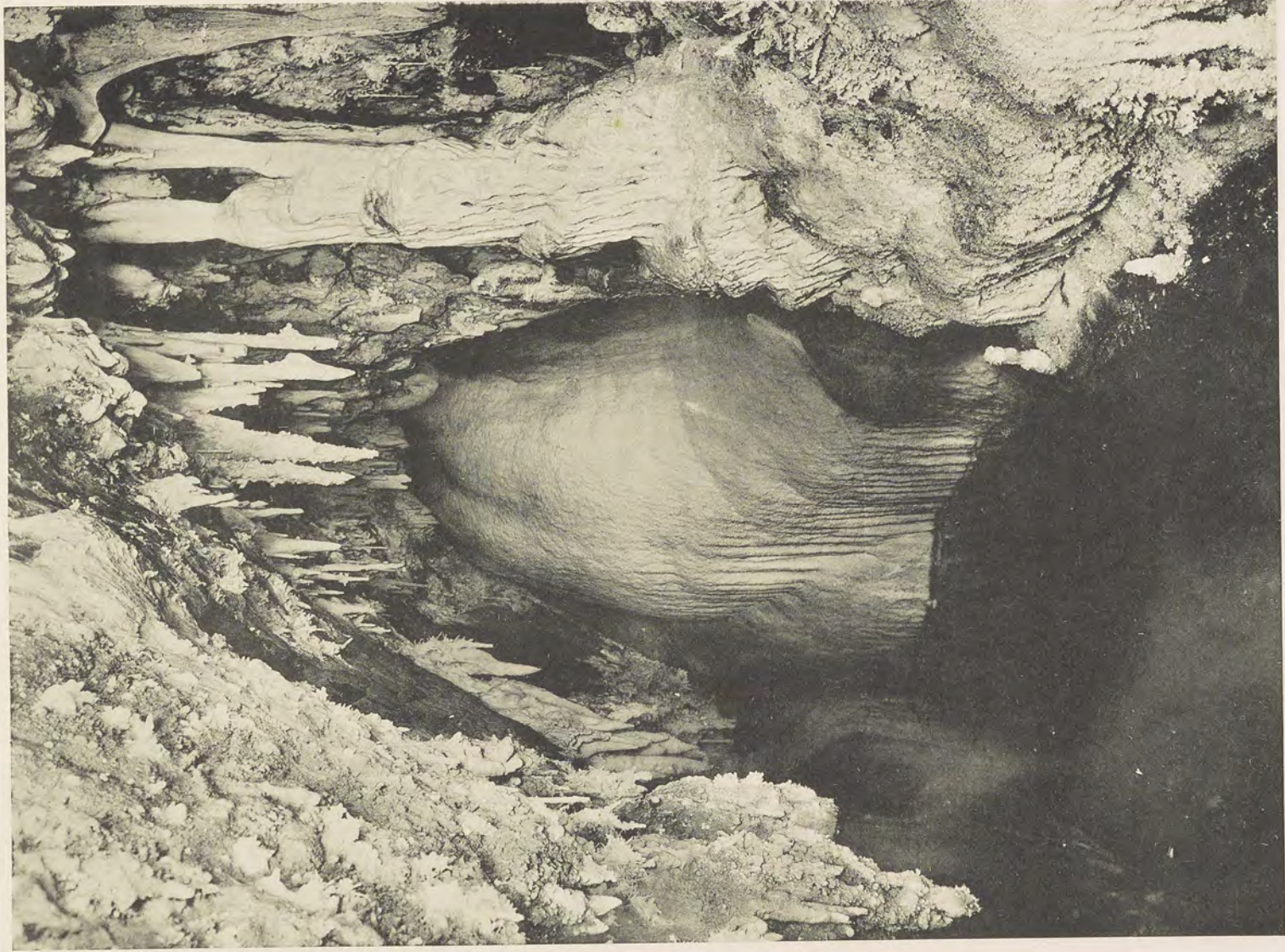
48. View of Jeppe's town and Bertram's Township, Environs of Johannesburg.



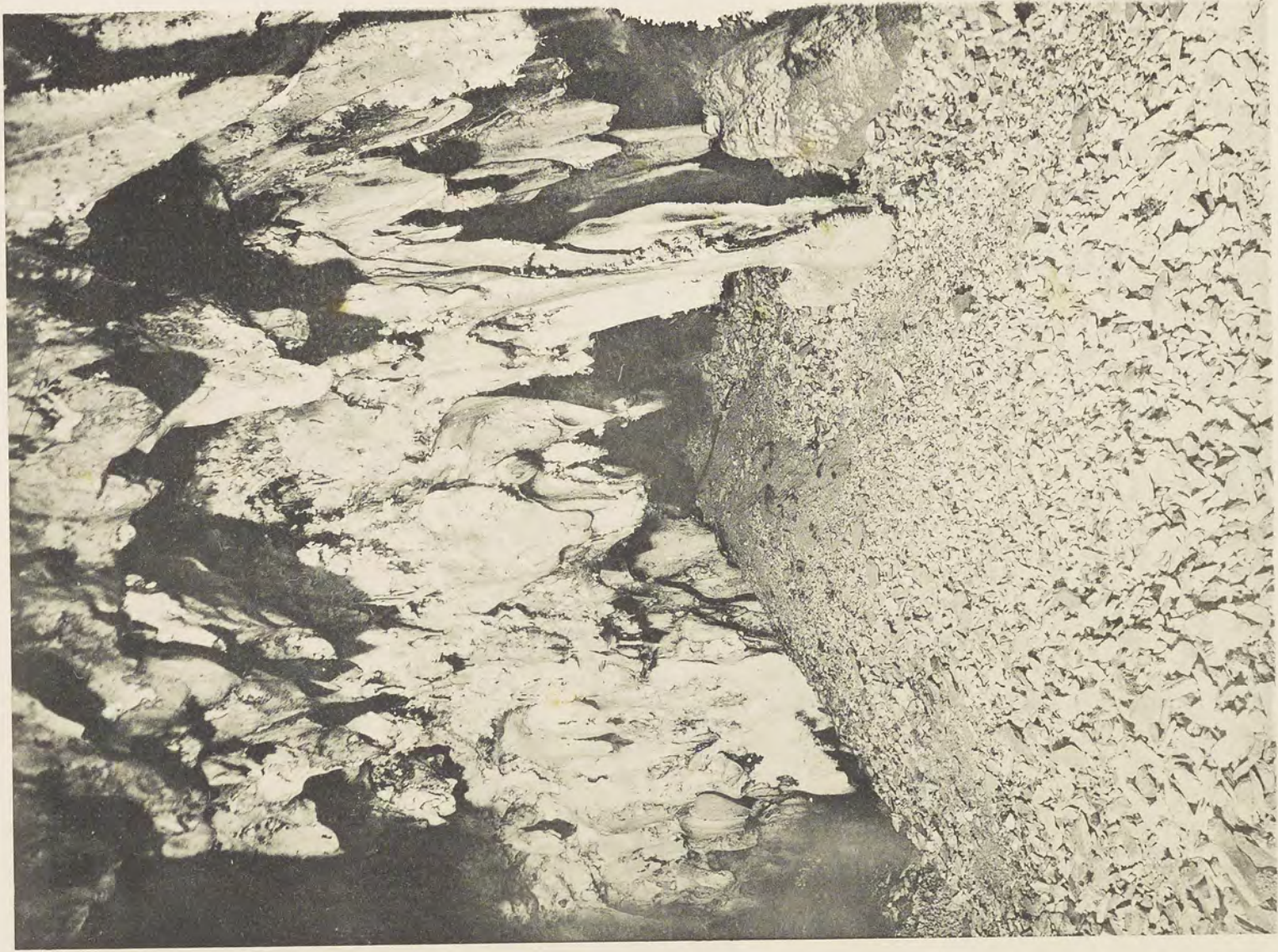
49. The Curtain in the Temple, Sterkfontein Caves, near Krugersdorp, Transvaal.



50. Jutting Rock, near the Basin, Sterkfontein Caves, near Krugersdorp, Transvaal.



51. The Pool, Sterkfontein Caves, near Krugersdorp, Transvaal.



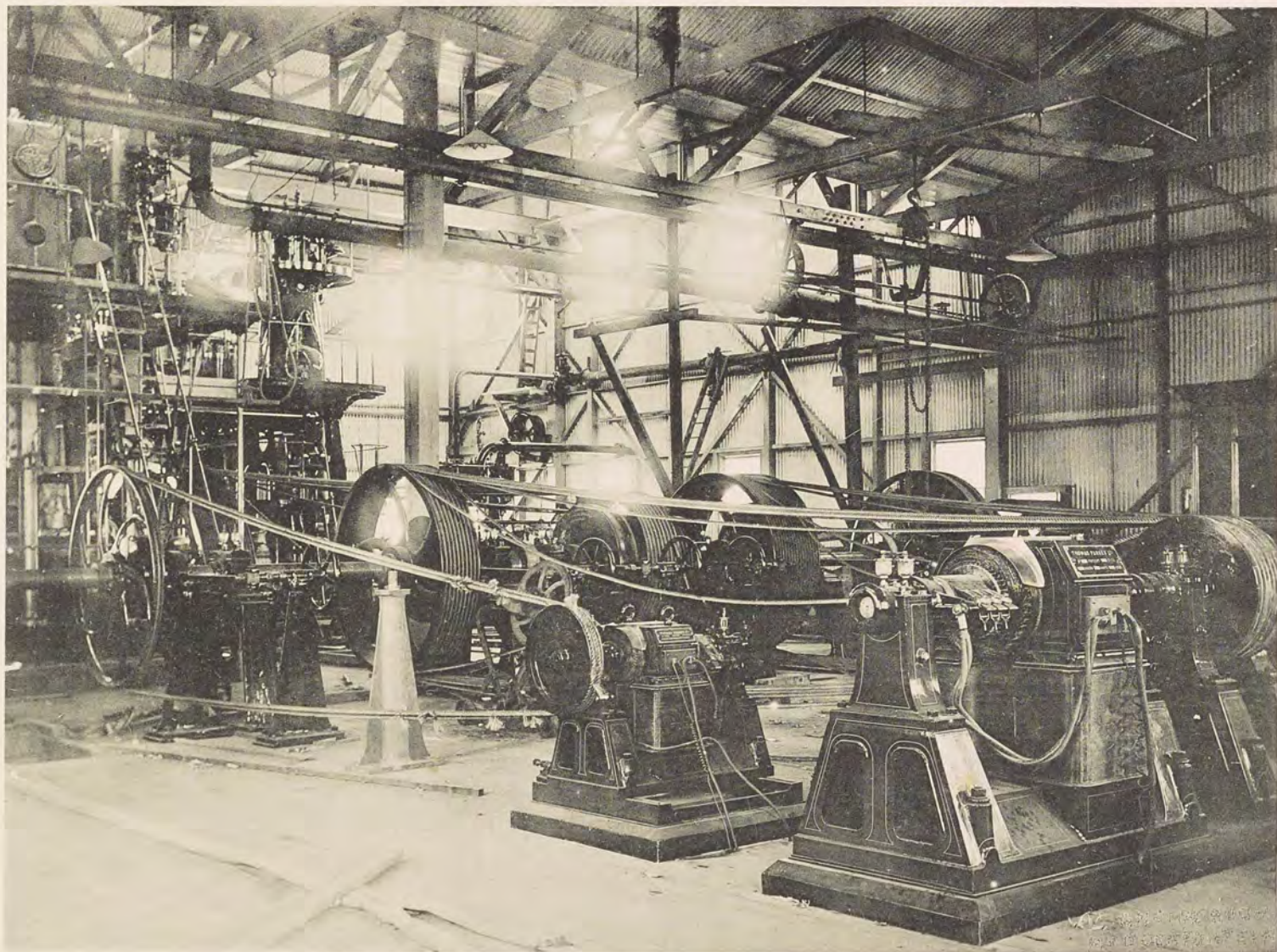
52. The Descent into the Dome, Sterkfontein Caves, near Krugersdorp, Transvaal.



53. The Kloof. Witpoortje, Transvaal.



54. Marshall Square, Saturday Morning.



55. Engine Room. The Modderfontein Mine.



56. The Compound. The New Primrose Mine.



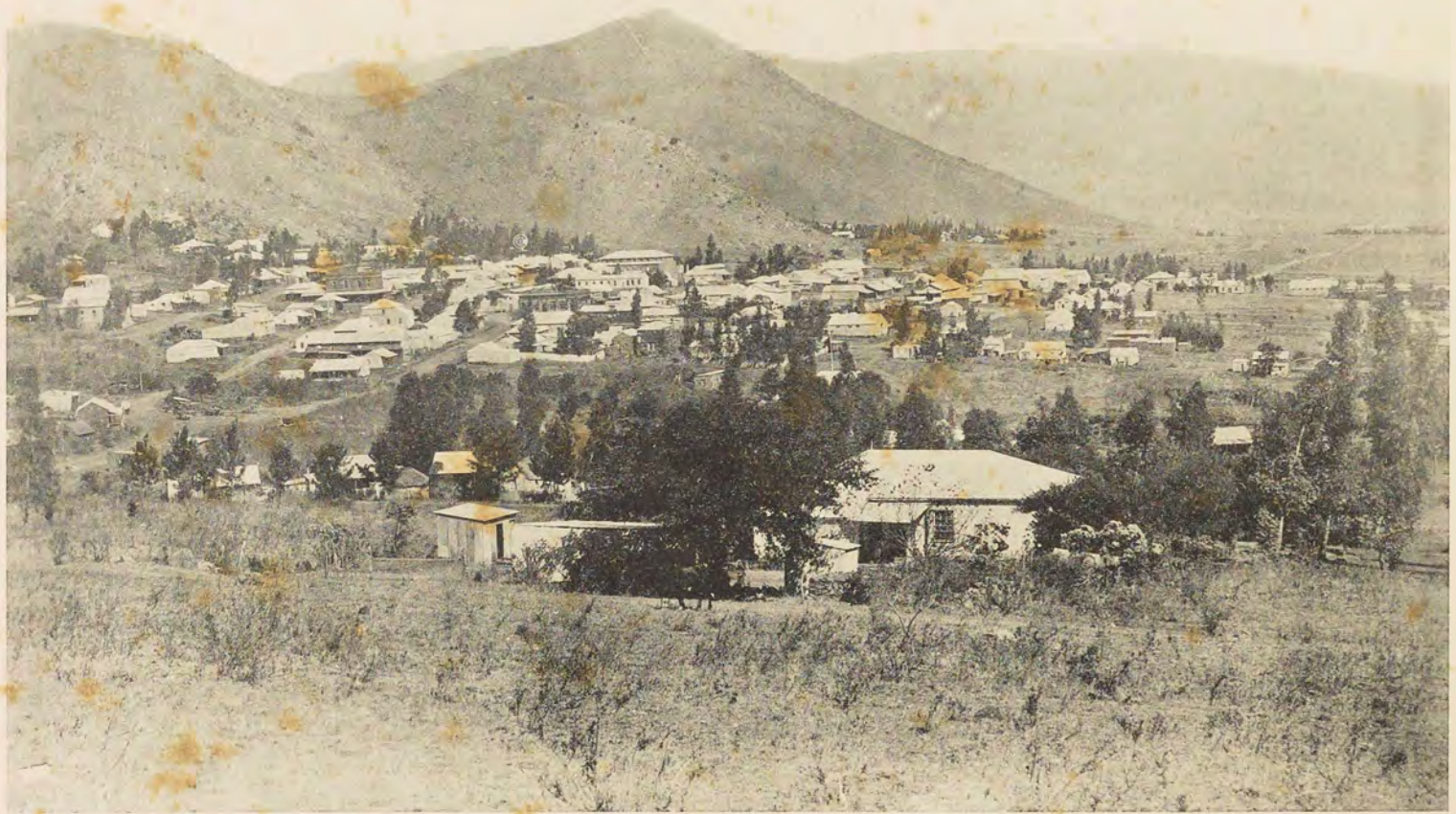
57. Natives' War Dance. The New Primrose Mine.



58. The Lomati Falls, near Swaziland Border, Transvaal.



59. Group of Kafir Maidens carrying Gwala (Native Beer).



60. Barberton (looking West). The Capital of De Kaap Gold Fields, Transvaal.







